



**APPLICANT: BOJATING VILLAGE SOLAR PROJECT**

**ATTENTION: INTERESTED AND/OR AFFECTED PARTY**

**ENVIRONMENTAL IMPACT ASSESSMENT (EIA) PROCESS AND WATER USE LICENCE (WUL) APPLICATION FOR THE DEVELOPMENT OF A SOLAR PHOTOVOLTAIC ("PV") FACILITY NEAR BOJATING, NORTH WEST PROVINCE.**

**1. Introduction**

The Bojating Village Solar Project proposes to develop a Photovoltaic ("PV") Solar facility near Bojating, 45 km north-east of Rustenburg. The proposed facility will be located on the Farm Elandsfontein 69 JQ (Dampplaas) in the Moses Kotane Local Municipality within the Bojanala Platinum District Municipality. A new three phase dual circuit 132kV electricity transmission line will also be established as part of the project on the farms Elandslaagte 30 JQ, Hartbeeslaagte 66 JQ, and Koedoesspruit 33 JQ (Part 1 and 2). (Refer to Figure 1).

Environmental Authorisation (EA) is required for the following Listed Activities contained in regulations published in terms of the National Environmental Management Act (No. 107 of 1998) ("NEMA"):

- **Listing Notice 1 (GN R. 327), Activity 11:** Facility for the transmission and distribution of electricity > 33 kilovolts (kV). **Activity 12:** The development of infrastructure > 100 m<sup>2</sup> within a watercourse;
- **Listing Notice 2 (GN R. 325), Activity 1:** Development of a facility for the generation of electricity from a renewable resource > 20 megawatts and **Activity 15:** Clearance of indigenous vegetation > 20 hectares.
- **Listing Notice 3 (GN R. 324), Activity 4:** Development of a road wider than 4 metres with a reserve less than 13,5 meters within 5 kilometres from a protected area and **Activity 12:** Clearance of indigenous vegetation > 300 square metres within a watercourse or wetland, or within 100 metres from a watercourse or wetland.

A full Scoping and Environmental Impact Assessment ("EIA") process is undertaken in terms of the EIA Regulations (GNR 326 of 2017). The Competent Authority ("CA") responsible for decision making and authorisation is the National Department of Environment, Forestry and Fisheries (DFFE).

A Water Use Licence ("WUL") application will also be submitted for Activities (a), (c) and (i) in terms of the National Water Act (No. 36 of 1998).

A public participation process must be undertaken in terms of the EIA regulations (GNR 326 of 2017) and the Regulations Regarding the Procedural Requirements for Water Use Licence Applications and Appeals (GNR. 267 of 2017) to inform all relevant Interested and Affected Parties ("IAPs") of the proposed project and allow IAPs to comment. This letter serves to **notify you as a landowner, lawful occupier, interested or affected party of the EIA and WUL application processes that are being undertaken.**

EXM Environmental Advisory (Pty) Ltd ("EXM") has been appointed as the Independent Environmental Assessment Practitioner ("EAP") responsible for undertaking the required environmental legislative processes and public consultation process.

**PURPOSE:**

This document serves to:

- Notify you of the EIA process and WUL application
- Describe the application processes.
- Inform you how you can provide input into the process.

**YOUR ROLE:**

As an interested and affected party, your role is to:

- Ask questions, raise issues and concerns.
- Attend public meetings.
- Review and provide comment on environmental reports.

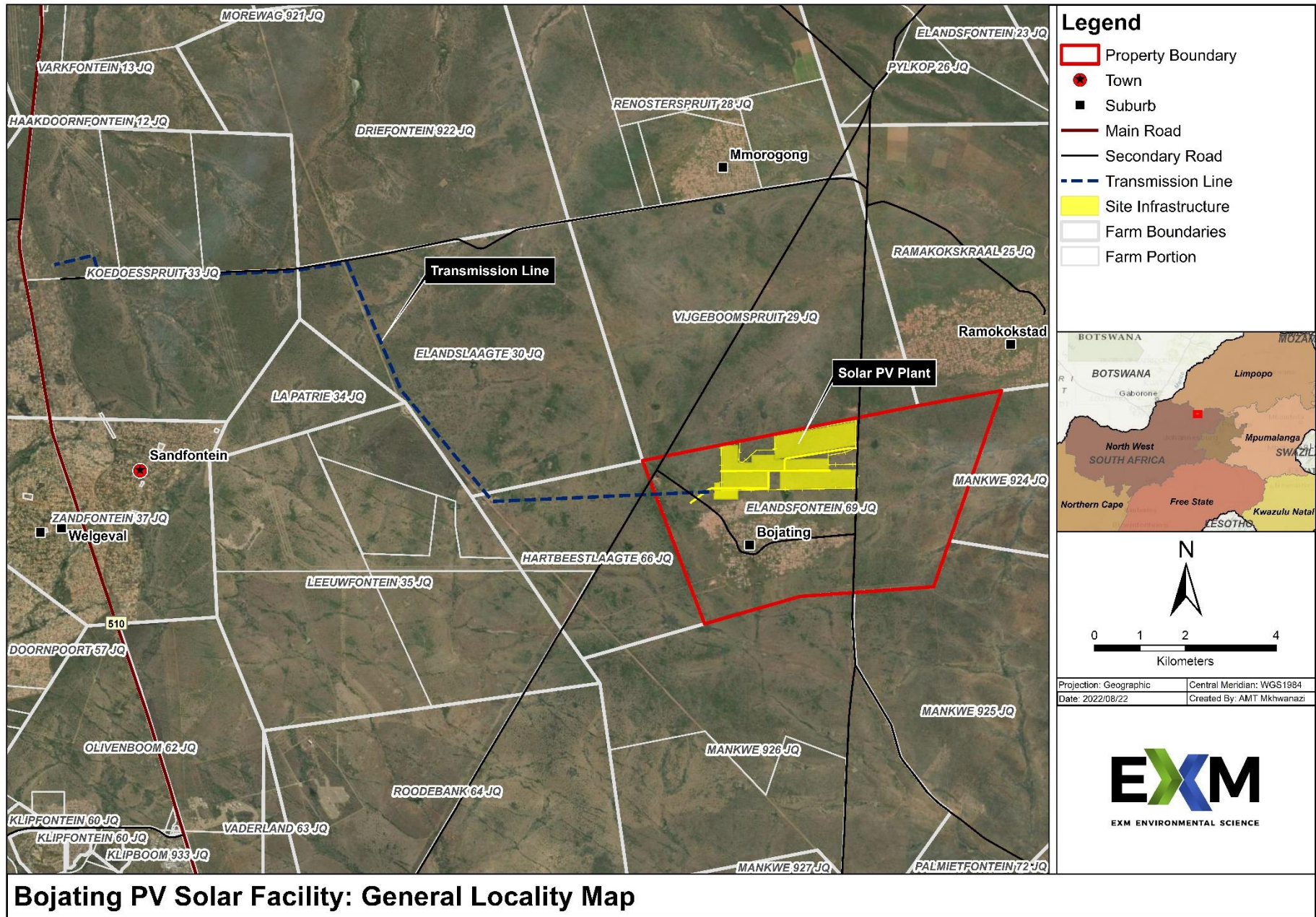


FIGURE 1: GENERAL LOCATION OF PROPOSED BOJATING SOLAR PHOTOVOLTAIC (“PV”) FACILITY

## 2. Project Description

The proposed Bojating PV facility will be located just north of the Bojating Village on the Farm Damplaas 69 JQ and will cover approximately 300 hectares of undeveloped (greenfield) land. The facility will entail the installation of Solar PV Panels (approximately 200,000 modules) on a single-axis tracking structure with the potential to generate approximately 100 Megawatts ("MW") of electricity. Associated infrastructure on site will include an operations & maintenance (O&M) building and control room, an 88/33kV transformer substation and potentially a battery energy storage system (BESS) with a capacity of up to 400MWh.

A new three phase dual circuit 132kV electricity transmission line will be established, which will connect the on-site substation to an Eskom substation. Refer to **Figure 3** for a preliminary project layout map. It should be noted that the final facility layout may be dependent on the outcome the specialist studies and potential sensitive areas that will be identified.

Water will mainly be used for biannual maintenance purposes (washing of PV panels) and to a lesser extent for potable purposes. Current indications show that water will be obtained from on-site boreholes (still to be established). The proposed facility will require approximately 430m<sup>3</sup> of water per annum. Access to the site will be either from existing roads or a new road will be established. It is also proposed to possibly develop approximately 20 hectares of Agrivoltaics, which will combine agricultural production (i.e.: cabbages, kales, spinach or other suitable fruits, vegetables, or herbs) and the generation of solar power at the same time. The water requirement for the agricultural activities (if actioned) still has to be determined. Rainwater harvesting and water-saving drip irrigation is intended to be employed to minimise the water requirements.



**FIGURE 2 EXAMPLE OF AN SOLAR AGRIVOLTAIC FACILITY**

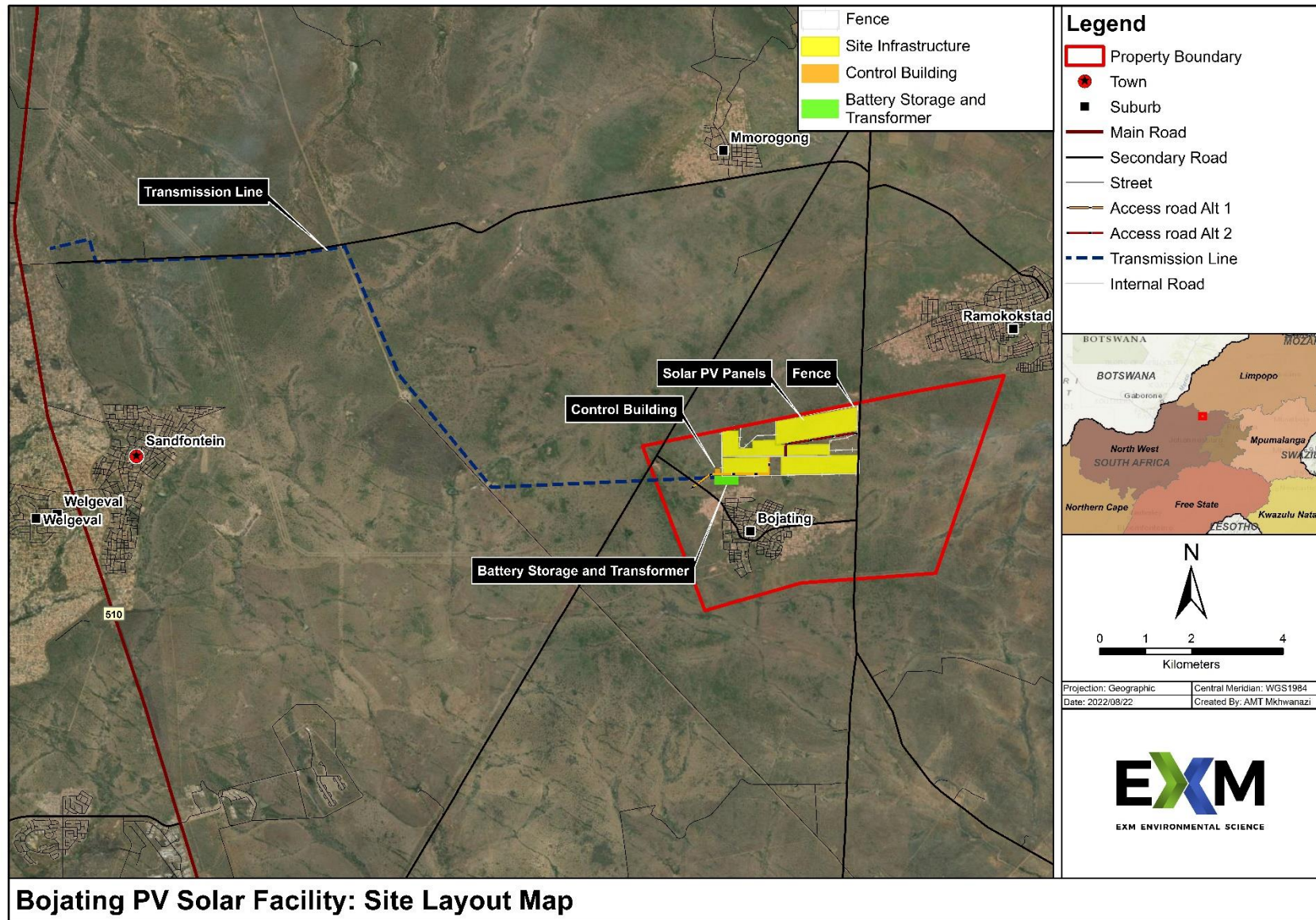


FIGURE 3: INITIAL SITE LAYOUT OF PROPOSED BOJATING SOLAR PHOTOVOLTAIC ("PV") FACILITY

### 3. Environmental Approvals Required

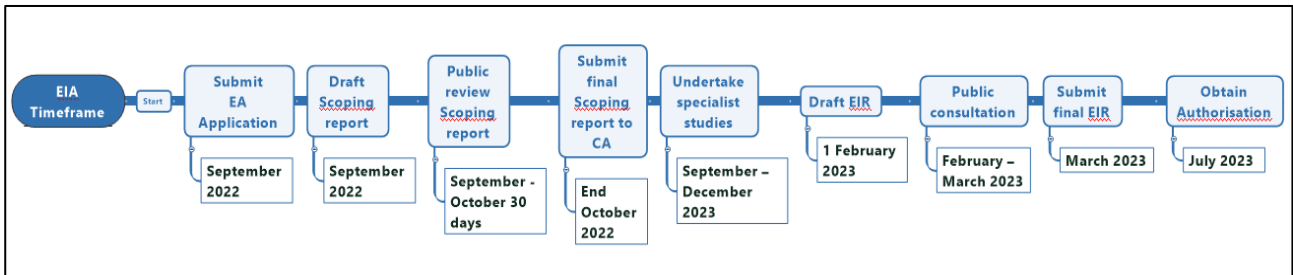
#### 3.1 National Environmental Management Act (No. 107 of 1998) (NEMA)

The proposed PV Solar facility triggers Listed Activities in terms of Listing Notices 1 (GN R. 327 of 2017), 2 (GN R. 325 of 2017) and 3 (GN R. 324 of 2017) published in terms of the EIA Regulations (as amended). A Basic Environmental Assessment is required for Listed Activities in GN R. 327 and GN R. 324, while a full Scoping and EIA must be undertaken for Listed Activities in GN R. 325. The following Listed Activities will be triggered, and a full Scoping and EIA process must be undertaken

**Table 1: Listed Activities triggered by the Project**

Applicable Regulation		Listed Activity applicability to proposed project
<b><u>Listing Notice 1 (GN R. 327)</u></b>		
<b>Activity 11</b>	The development of facilities or infrastructure for the transmission and distribution of electricity— (i) outside urban areas or industrial complexes with a capacity of more than 33 but less than 275 kilovolts;	A new 88kV transmission line will be established which will connect the on-site substation to an Eskom substation.
<b>Activity 12</b>	The development of infrastructure or structures with a physical footprint of 100 square metres or more within a watercourse;	The solar facility's footprint will either directly affect water courses or be situated 100 m from the edge of a watercourse and/or wetland.
<b><u>Listing Notice 2 (GN R. 325)</u></b>		
<b>Activity 1</b>	The development of facilities or infrastructure for the generation of electricity from a renewable resource where the electricity output is 20 megawatts or more, excluding where such development of facilities or infrastructure is for photovoltaic installations and occurs — (a) within an urban area; or (b) on existing infrastructure.	The project will entail the generation of 100 MW of electricity from a renewable resource outside an urban area which is above the threshold.
<b>Activity 15</b>	The clearance of an area of 20 hectares or more of indigenous vegetation, excluding where such clearance of indigenous vegetation is required for— (a) the undertaking of a linear activity. (b) maintenance purposes undertaken in accordance with a maintenance management plan.	The project will entail vegetation clearance of an area of >20 hectares.
<b><u>Listing Notice 3 (GN R. 324)</u></b>		
<b>Activity 4</b>	The development of a road wider than 4 metres with a reserve less than 13,5 metres. Areas within 10 kilometres from national parks or world heritage sites or 5 kilometres from any other protected area identified in terms of NEMPAA or from the core areas of a biosphere reserve, excluding disturbed areas;	Construction of an internal road within the 5km buffer from the protected area.
<b>Activity 12</b>	(h) The clearance of an area of 300 square metres or more of indigenous vegetation iv) Critical biodiversity areas (CBA) as identified in systematic biodiversity plans adopted by the competent authority. vi) Areas within a watercourse or wetland, or within 100 metres from the edge of a watercourse or wetland.	The solar facility's footprint will either directly affect water courses or be situated 100 m from the edge of a watercourse and/or wetland.

The regulated timeframes for the EIA process, as provided in the EIA Regulations, are provided below.



**FIGURE 3: EIA POCESS**

**3.2 National Water Act (No. 36 of 1998) (“NWA”)**

The purpose of the National Water Act (“NWA”) (No. 36 of 1998) is to ensure that the nation's water resources are protected, used, developed, conserved, managed, and controlled. Section 21 of the NWA contains a list of activities that require a Water Use Licence (“WUL”) prior to commencement. Based on the available information, the following Section 21 water uses will be triggered by the project and therefore a WUL will be required prior to commencement. The WUL application process is regulated by the Regulations Regarding the Procedural Requirements for Water Use Licence Applications and Appeals (GN.R. 267 of 2017).

**Table 2: Section 21 water uses to be included in the IWULA**

Activity	Project Applicability
21 (a) Taking water from a water resource	The proposed facility will require approximately 430m <sup>3</sup> water per annum, which will be obtained from on-site boreholes.
21 (c&i) Altering beds, banks, and flow of a watercourse	The desktop investigation undertaken confirmed that numerous watercourses (including NFEPA wetlands) are located on the project footprint or in close proximity thereof.

#### 4. Public Participation Process

A public participation process is being undertaken as part of the EIA and WUL applications. The process is conducted in terms of the NEMA EIA regulations (GNR. 627 of 2017) as well as the Regulations Regarding the Procedural Requirements for Water Use Licence Applications and Appeals (GNR 267 of 2017) promulgated under the NWA.

Stakeholders are offered the opportunity to be informed about the application, raise comments, issues or concerns, and provide input into the application and reports.

Interested & Affected Parties are invited to participate in the environmental process. You can provide input by:

- Registering as an Interested & Affected Party (I&AP);
- Asking questions and raising initial concerns by completing and returning the response sheet (attached);
- Reviewing and providing comment on reports.

All registered I&APs will be informed when documents will be available for review. Should you have questions or require more information, **please contact:**

**Thashnee Moodley**

EXM Environmental Advisory (Pty) Ltd

Cell: 072 555 2643

Email: [thashnee@exm.co.za](mailto:thashnee@exm.co.za)

PO Box 1822, Rivonia, 2128

Yours sincerely

Trevor Hallatt

EXM Environmental Advisory (Pty) Ltd

