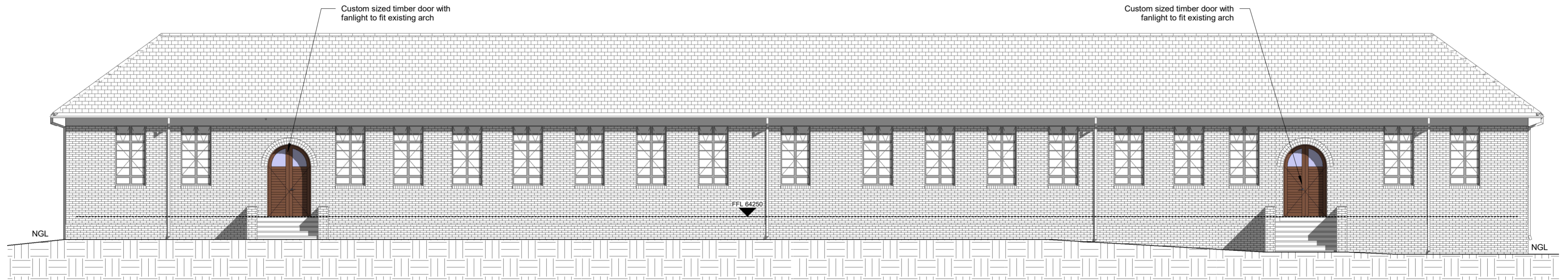
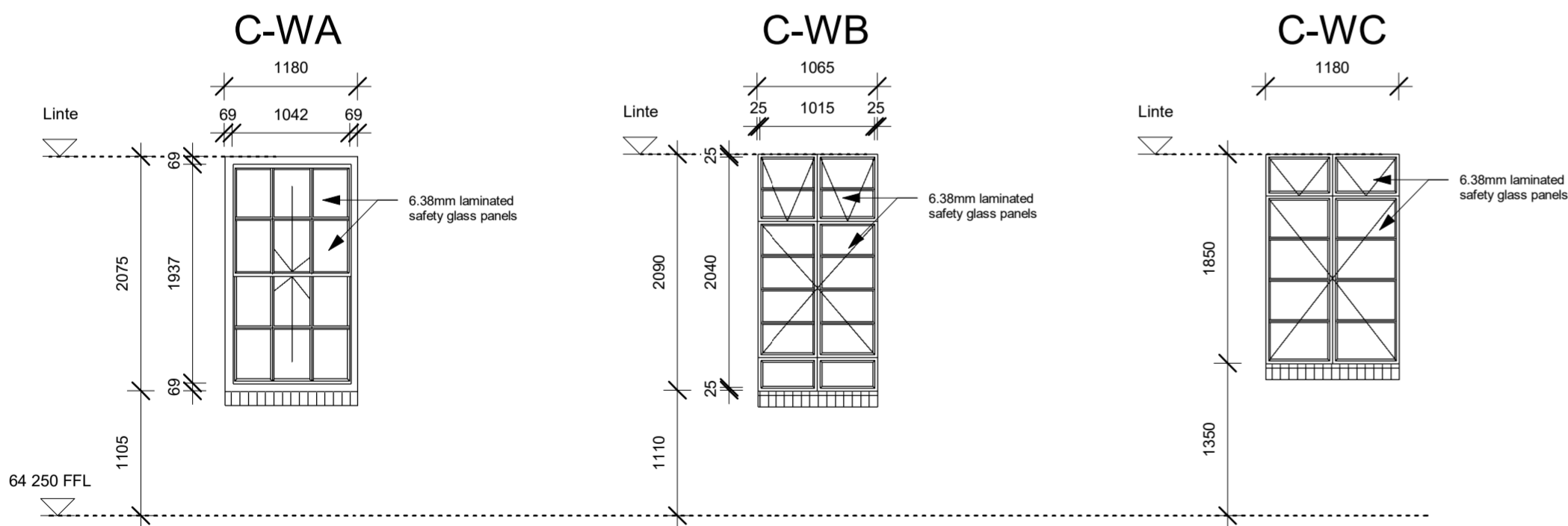


1 Block C - South elevation - AMAFA
1 : 100



2 Block C - West elevation - AMAFA
1 : 100



Block C - Window Elevations
1 : 50

Block C - Window Schedule									
Window name.:	No. Off:	Width	Height	Head Height	Glass	Window Frame	Ironmongery	Internal sill	External sill
C-WA	26	1180	2075		Fit 6.38mm laminated safety glass to all windows panes with window putty with no air bubbles, cut to a smooth equal angle. Seal putty with Linseed oil, clean down window	Repairing frames in good working order, remove glass panels, scrape and sand down timber frames ready for painting. Replacing damaged / non-working frames: Carefully remove window frame and replace with new hardwood timber sash window as Swartland cottage pane windows to mimic existing windows ready for painting.: 1 ct Dulux Wood primer 2 cts Dulux Pearlglow water base (sand lightly between coats)	Repairing: Service and or replace working parts, latches, pulleys etc to smooth working order Replacement window: As supplied by Swartland	Sand down or replace Timber to match existing dado rail and sill to smooth surface and even surface. Paint as window sill (sand between coats)	Clean down brick sill, repoint perpend where necessary.
C-WB	53	1065	2090	3495	Remove existing float glass, replace with 6.38mm laminated safety glass with window putty with no air bubbles, cut to a smooth equal angle. Seal putty with Linseed oil, clean down window	Scrape down and remove putty, glass and paint work. (If frame is corroded through rust then remove frame and replace with GMS frame). Paint frame: 1ct Dulux steel primer, 1 ct Dulux undercoat for all surfaces 2 cts Dulux Pearlglow water base	Service all existing hinges, stays and latches. Replace any damaged or worn latches or stays with solid brass ironmongery to match existing. Use 100% Silicone seal all round internal and external junctions between window frames and plaster/brick line.	Chip out plaster sill to brickwork. Fit 15mm Nutec Fibre cement window sill under window sill frame (width to suit window sill) fitted on bed of mortar (compressed to 5mm thick) keeping sill wet to ensure no warping) using self-taping screw and fixing lug (pocket our existing plaster where needed) as per manufacturers installation guide. Edge of sill to project max 10mm from plaster line	Clean down brick sill, repoint perpend where necessary.
C-WC	1	1180	1850	2940	Remove existing float glass, replace with 6.38mm laminated safety glass with window putty with no air bubbles, cut to a smooth equal angle. Seal putty with Linseed oil, clean down window	Scrape down and remove putty, glass and paint work. (If frame is corroded through rust then remove frame and replace with GMS frame). Paint frame: 1ct Dulux steel primer, 1 ct Dulux undercoat for all surfaces 2 cts Dulux Pearlglow water base	Service all existing hinges, stays and latches. Replace any damaged or worn latches or stays with solid brass ironmongery to match existing. Use 100% Silicone seal all round internal and external junctions between window frames and plaster/brick line.	Chip out plaster sill to brickwork. Fit 15mm Nutec Fibre cement window sill under window sill frame (width to suit window sill) fitted on bed of mortar (compressed to 5mm thick) keeping sill wet to ensure no warping) using self-taping screw and fixing lug (pocket our existing plaster where needed) as per manufacturers installation guide. Edge of sill to project max 10mm from plaster line	Clean down brick sill, repoint perpend where necessary.

