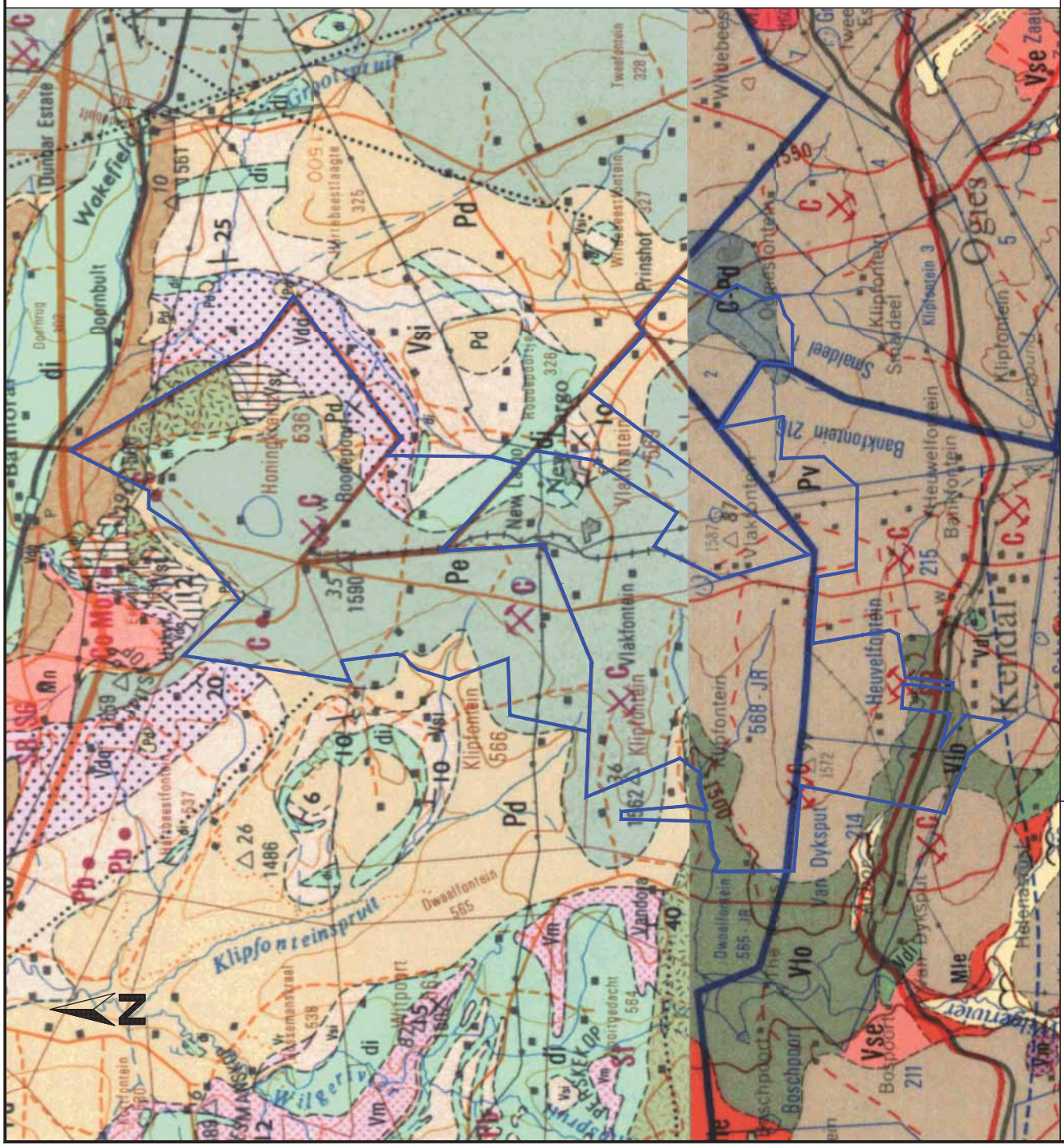


Symbol	Material	Formation	Group/Suite	Sequence/Complex	Age
	Shale, shaly sandstone, grit, sandstone, conglomerate and coal in places near the base and top.	Vryheid	Ecca	Karoo	Permian
	Tiltite, diamictite and shale	Dwyka	-	-	-
	Pyroxenite, gabbro	-	Dwarsfontein	-	-
	Diabase	Intrusive	Post Transvaal	-	Mogalian
	Sandstone, quartzite in places and conglomerate	Wilge River	Waterberg	-	-
	Grey to pink coarse-grained granite, medium grained porphyritic granite, red coarse grained biotite granite.	Nebo Granite	Lebowa Granite	Bushveld	-
	Shale, sandstone, conglomerate and volcanic rock	Loskop	Rooiberg	-	-
	Quartzite, shale & subgraywacke	Rayton	-	-	Vaalian
	Quartzite and minor hornfels	Magaliesberg	-	Transvaal	-
	Shale (carbonaceous in places), hornfels & chert	Silverton	Pretoria	-	-
	Quartzite	Daspoort	-	-	-
	Shale in places ferruginous	Strubenkop	-	-	-

2528 PRETORIA, 2628 EAST RAND
Scale 1 : 100 000 (A3)

Job No C184-04

Figure 3.4(a)



NEW LARGO COLLIERY
IWULA
Regional Geology

Jones & Wagener
Consulting Civil Engineers
29 Swan Road
Pretoria 0001
Tel: (011) 518-0200
Fax: (011) 518-0200
e-mail: post@jwag.co.za

