

All work is to be done in accordance with the National Building Regulations and Building Standards Act 1977 (Act No. 103 of 1977) and the National Building Regulations and Building Standards Act 1977 (Act No. 103 of 1977) and the National Building Regulations and Building Standards Act 1977 (Act No. 103 of 1977).

- All materials and workmanship are to comply with the relevant S.A.S. codes. Figured dimensions are to be in millimeters unless otherwise stated.

- This drawing is not to be scaled. Figured dimensions are to be in millimeters unless otherwise stated.

- Other relevant drawings and specifications must be read in conjunction with all drawings on this project.

- Any discrepancies on the drawings are to be brought to the architect's attention by the contractor before putting work in.

- The contractor must obtain the architect's written confirmation of any instructions which involve a variation to the contract before putting work in.

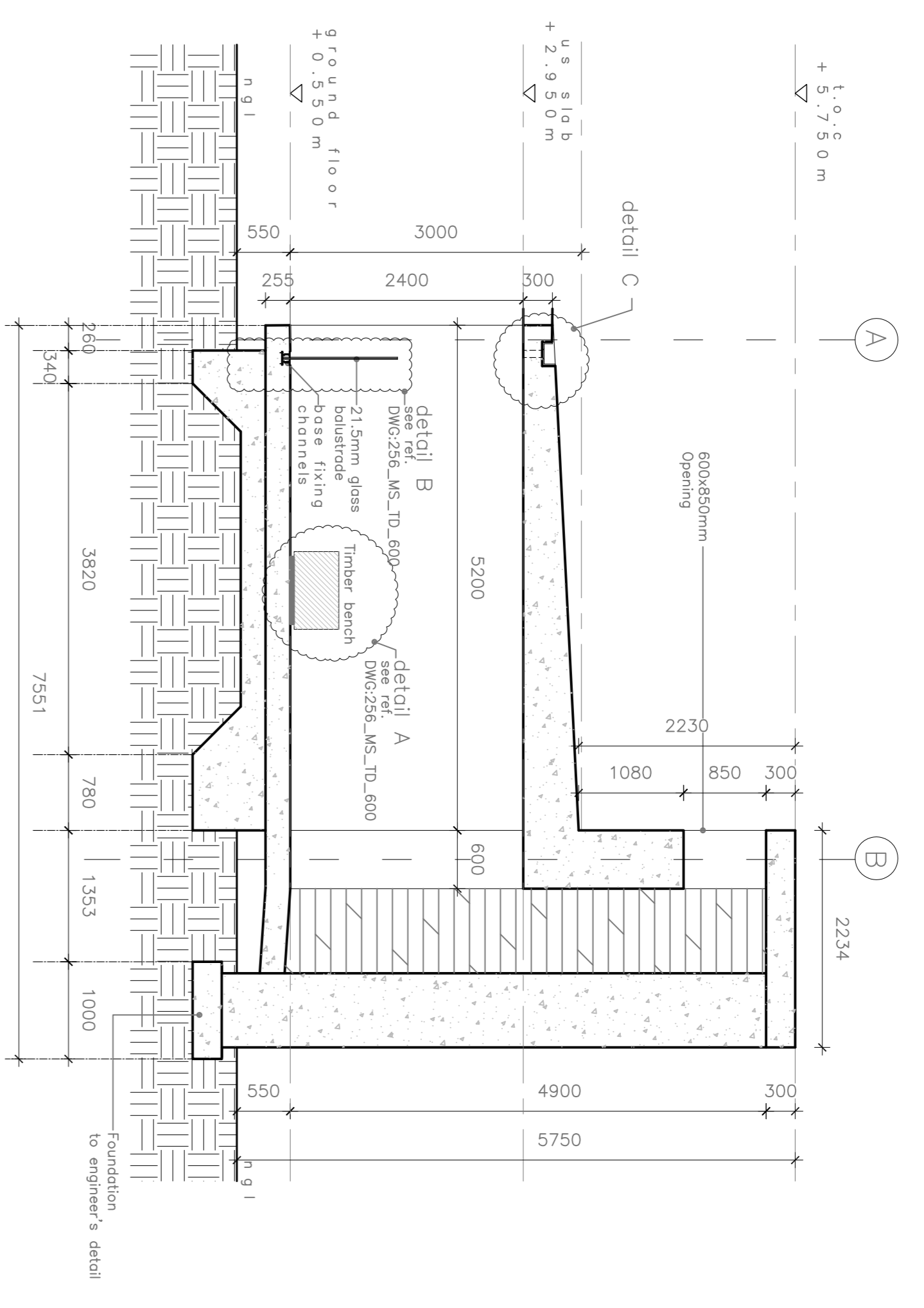
- All voids, suspended ceilings and partitions to be removed in accordance with the architect's written confirmation of any instructions which involve a variation to the contract before putting work in.

- Government tendering regulations, as done in accordance with the National Building Regulations, and sub-contractors are to check all site dimensions and levels before commencing work.

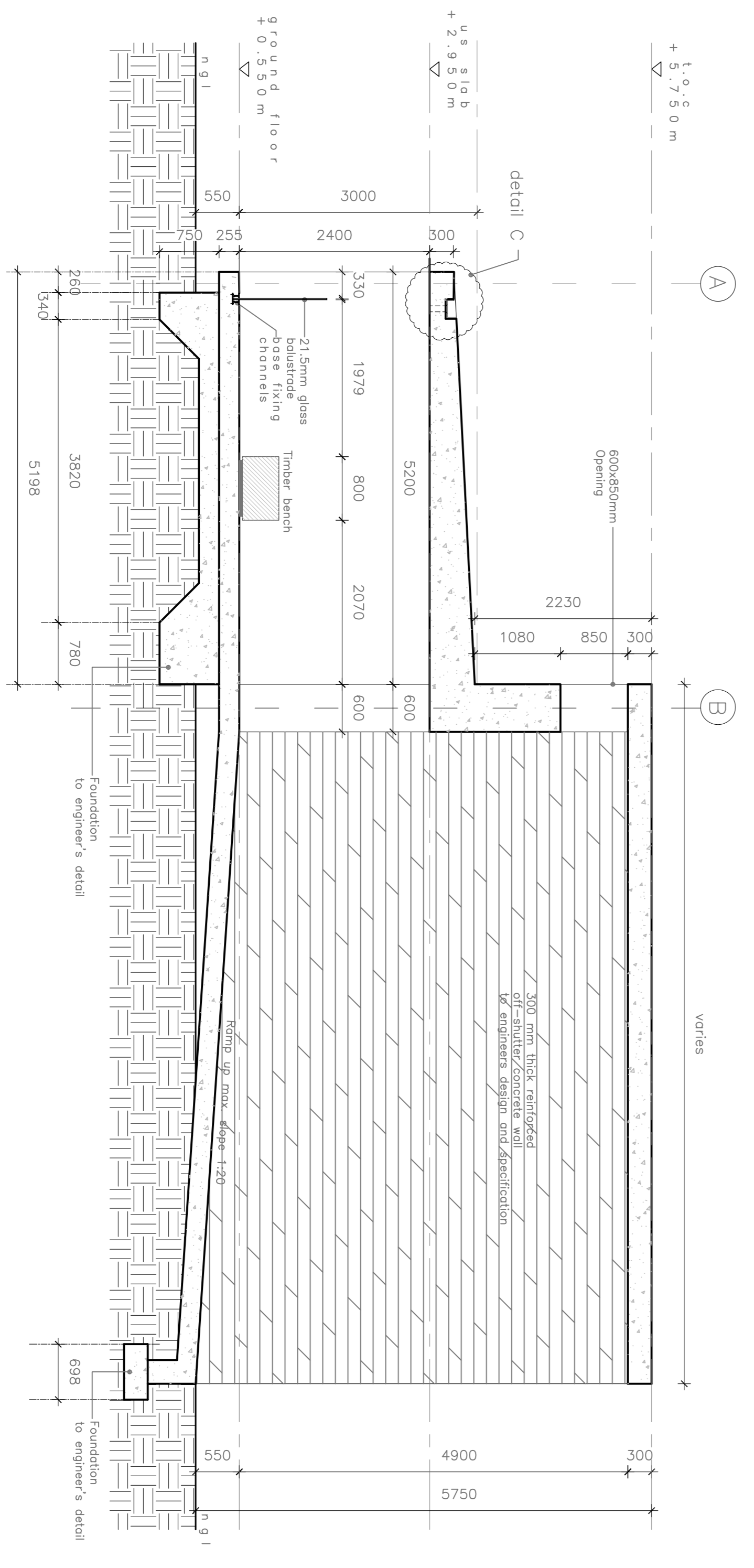
- The design of this drawing is the copyright of the architect.

- The architect is not responsible for ensuring the structural stability of all components of the work and ascertaining that the main structure is capable of supporting all loads applied thereto.

- BREKSHA TOS & CONSULTANTS BY STRUCTURAL ENGINEER



Section D-D  
SCALE 1:30



Section C-C  
SCALE 1:30

NO	DATE	DESCRIPTION	BY
A	2014.07.08	ISSUED FOR INFORMATION	MS
B	2014.08.21	ISSUED FOR INFORMATION	GB
C	2015.01.19	ISSUED FOR INFORMATION	BM



architects : urban designers : planners  
14 071 140 1037 Fax: +27 11 486 9997 [info@nashhane.com](mailto:info@nashhane.com) [www.nashhane.com](http://www.nashhane.com)

CONSULTANTS	SERVICE	CONTACT
IMPLEMENTING AGENT	THE INDEPENDENT DEVELOPMENT TRUST	14 071 140 1037 Fax: +27 11 486 9997 <a href="mailto:info@nashhane.com">info@nashhane.com</a> <a href="http://www.nashhane.com">www.nashhane.com</a>
ARCHITECT	THE INDEPENDENT DEVELOPMENT TRUST	14 071 140 1037 Fax: +27 11 486 9997 <a href="mailto:info@nashhane.com">info@nashhane.com</a> <a href="http://www.nashhane.com">www.nashhane.com</a>
STRUCTURAL ENGINEER	STRUCTURAL ENGINEER	14 071 140 1037 Fax: +27 11 486 9997 <a href="mailto:info@nashhane.com">info@nashhane.com</a> <a href="http://www.nashhane.com">www.nashhane.com</a>
Mechanical engineer	Mechanical engineer	14 071 140 1037 Fax: +27 11 486 9997 <a href="mailto:info@nashhane.com">info@nashhane.com</a> <a href="http://www.nashhane.com">www.nashhane.com</a>
Quantity surveyor	Quantity surveyor	14 071 140 1037 Fax: +27 11 486 9997 <a href="mailto:info@nashhane.com">info@nashhane.com</a> <a href="http://www.nashhane.com">www.nashhane.com</a>



Taung skull heritage site  
THE MEMORIAL SITE  
FOR TENDER

SCALE	DATE	REVISION NO.
1:50	MS	2014.07.08

SECTION'S C-C&D-D  
265\_MS\_TD-201  
PROJECT NO: 265  
PROJECT: TAUNG SKULL HERITAGE