

Palaeontological Impact Assessment for the proposed 22 kV power line connection Coka-Cobe, near Ritchie, Northern Cape Province

Desktop Study (Phase 1)

For

Archaeological and Heritage Services (Pty) Ltd

04 July 2021

Prof Marion Bamford

Palaeobotanist

P Bag 652, WITS 2050

Johannesburg, South Africa

Marion.bamford@wits.ac.za

Expertise of Specialist

The Palaeontologist Consultant: Prof Marion Bamford
Qualifications: PhD (Wits Univ, 1990); FRSSAf, ASSAf
Experience: 32 years research; 24 years PIA studies

Declaration of Independence

This report has been compiled by Professor Marion Bamford, of the University of the Witwatersrand, sub-contracted by Archaeological and Heritage Services (Pty) Ltd, Pretoria, South Africa. The views expressed in this report are entirely those of the author and no other interest was displayed during the decision making process for the Project.

Specialist: Prof Marion Bamford

Signature:

A handwritten signature in blue ink, appearing to read 'MKBamford', with a horizontal line underneath it.

Executive Summary

A palaeontological Impact Assessment was requested (SAHRA CaseID: 16060) for the proposed construction of a 22 kV power line connecting the Coka feeder to the Cobe feeder, west of Richie and about 40 m southwest of Kimberley, Northern Cape Province. The line will be about 8 km in length.

To comply with the South African Heritage Resources Agency (SAHRA) in terms of Section 38(8) of the National Heritage Resources Act, 1999 (Act No. 25 of 1999) (NHRA), a desktop Palaeontological Impact Assessment (PIA) was completed for the proposed development.

The proposed route for the power line is along the margin of highly sensitive rock along the western quarter and through moderately sensitive rocks for the rest of the route to the east. The moderately sensitive rocks (east) are those of the Quaternary Kalahari sands that are aeolian (windblown). Although the correct age for fossils, the sands are unlikely to preserve fossils, and there are no features, such as paleo-pans or paleo-springs, that might entrap fossils. According to the geological map the rocks close to the Riet River (West) are the same as those to the east, however the SAHRIS Palaeosensitivity map indicates that these are highly sensitive rocks. Nonetheless, a Fossil Chance Find Protocol should be added to the EMP. Based on this information it is recommended that no palaeontological site visit is required unless fossils are found once drilling or excavations for the power line poles have commenced.

Table of Contents

Expertise of Specialist	1
Declaration of Independence	1
1. Background.....	4
2. Methods and Terms of Reference	6
3i. Project location and geological context.....	6
3ii. Palaeontological context	8
4. Impact assessment	10
5. Assumptions and uncertainties	11
6. Recommendation.....	11
7. References	11
8. Chance Find Protocol	13
Appendix A (examples of fossils)	14
Appendix B (short CV of specialist)	15

1. Background

The Northern Cape Operating Unit of Eskom Distribution is planning to construct an 8km 22kV power line in order to connect COKA feeder with the COBE feeder that will enable the creation of a second supply of power. This will ensure firm supply to the customers in and around the area supplied by the mentioned feeders. The project will happen in the Ritchie area, under Sol Plaatjie Municipality in the Northern Cape. The power line route is shown in Figure 1. SAHRA has requested that a desktop Palaeontological Impact Assessment be completed for this project (CaseID: 16060).

In order to comply with the regulations of the South African Heritage Resources Agency (SAHRA) in terms of Section 38(8) of the National Heritage Resources Act, 1999 (Act No. 25 of 1999) (NHRA), a desktop Palaeontological Impact Assessment (PIA) was completed for the proposed 22 kV power line and is presented herein.

Table 1: Specialist report requirements in terms of Appendix 6 of the EIA Regulations (amended 2017)

	A specialist report prepared in terms of the Environmental Impact Regulations of 2017 must contain:	Relevant section in report
ai	Details of the specialist who prepared the report	Appendix B
aii	The expertise of that person to compile a specialist report including a curriculum vitae	Appendix B
b	A declaration that the person is independent in a form as may be specified by the competent authority	Page 1
c	An indication of the scope of, and the purpose for which, the report was prepared	Section 1
ci	An indication of the quality and age of the base data used for the specialist report: SAHRIS palaeosensitivity map accessed – date of this report	Yes
cii	A description of existing impacts on the site, cumulative impacts of the proposed development and levels of acceptable change	Section 5
d	The date and season of the site investigation and the relevance of the season to the outcome of the assessment	N/A
e	A description of the methodology adopted in preparing the report or carrying out the specialised process	Section 2
f	The specific identified sensitivity of the site related to the activity and its associated structures and infrastructure	Section 4
g	An identification of any areas to be avoided, including buffers	N/A
h	A map superimposing the activity including the associated structures and infrastructure on the environmental sensitivities of the site including areas to be avoided, including buffers;	N/A

i	A description of any assumptions made and any uncertainties or gaps in knowledge;	Section 5
j	A description of the findings and potential implications of such findings on the impact of the proposed activity, including identified alternatives, on the environment	Section 4
k	Any mitigation measures for inclusion in the EMPr	Section 7, Appendix A
l	Any conditions for inclusion in the environmental authorisation	N/A
m	Any monitoring requirements for inclusion in the EMPr or environmental authorisation	Section 7, Appendix A
ni	A reasoned opinion as to whether the proposed activity or portions thereof should be authorised	N/A
nii	If the opinion is that the proposed activity or portions thereof should be authorised, any avoidance, management and mitigation measures that should be included in the EMPr, and where applicable, the closure plan	N/A
o	A description of any consultation process that was undertaken during the course of carrying out the study	N/A
p	A summary and copies if any comments that were received during any consultation process	N/A
q	Any other information requested by the competent authority.	N/A

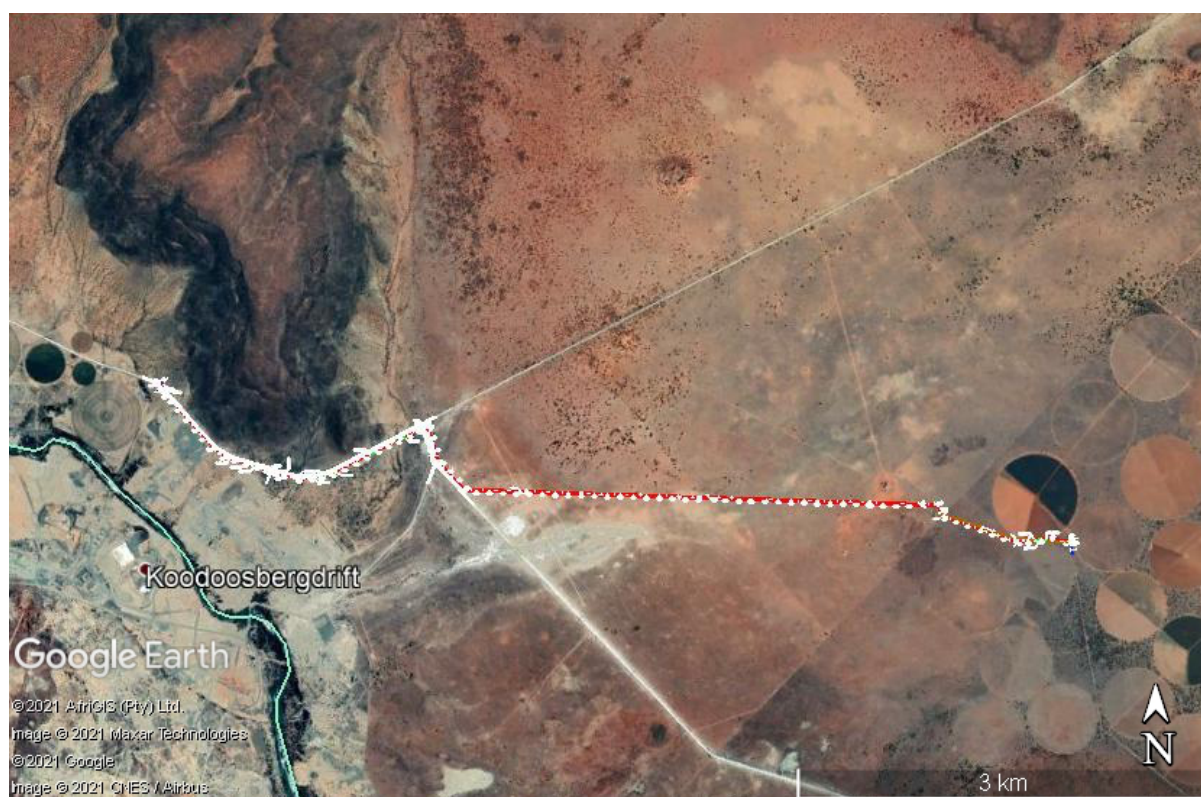


Figure 1: Google Earth map of the proposed 22 kV power line between Coka-Cobe, SW of Kimberley. Map supplied by MCPM.

2. Methods and Terms of Reference

The Terms of Reference (ToR) for this study were to undertake a PIA and provide feasible management measures to comply with the requirements of SAHRA.

The methods employed to address the ToR included:

1. Consultation of geological maps, literature, palaeontological databases, published and unpublished records to determine the likelihood of fossils occurring in the affected areas. Sources included records housed at the Evolutionary Studies Institute at the University of the Witwatersrand and SAHRA databases;
2. Where necessary, site visits by a qualified palaeontologist to locate any fossils and assess their importance (*not applicable to this assessment*);
3. Where appropriate, collection of unique or rare fossils with the necessary permits for storage and curation at an appropriate facility (*not applicable to this assessment*); and
4. Determination of fossils' representivity or scientific importance to decide if the fossils can be destroyed or a representative sample collected (*not applicable to this assessment*).

3. Geology and Palaeontology

i. Project location and geological context

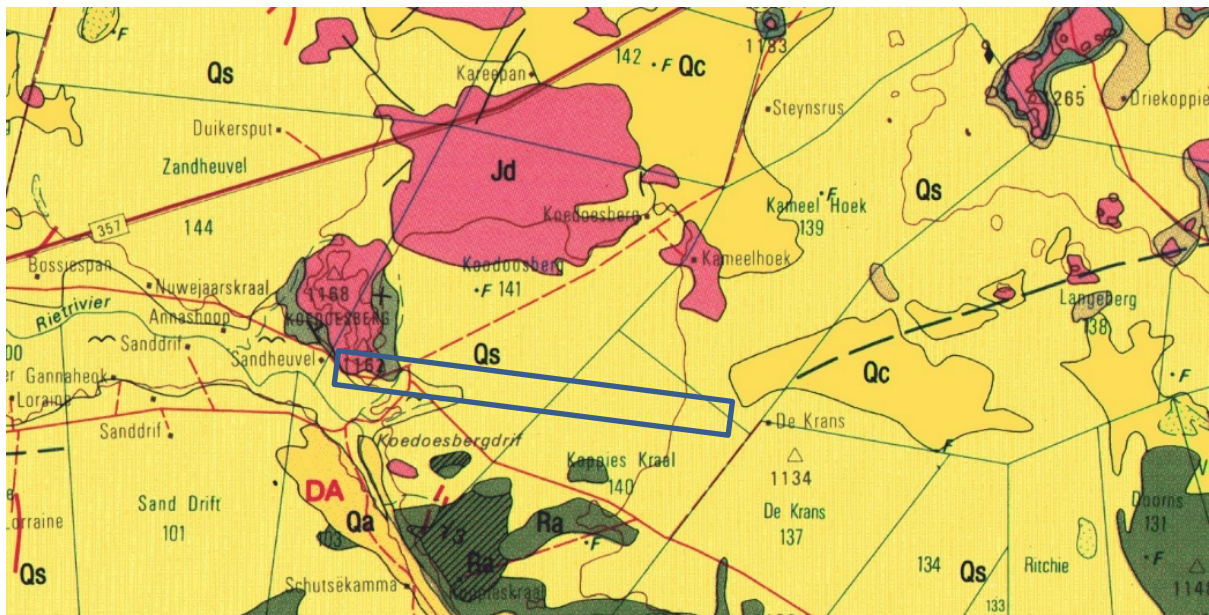


Figure 2: Geological map of the area around the proposed ESKOM 22 kV power line to connect Coka-Cobe. The route is indicated within the blue rectangle. Abbreviations of the rock types are explained in Table 2. Map enlarged from the Geological Survey 1: 250 000 map 2722 Kuruman.

Table 2: Explanation of symbols for the geological map and approximate ages (Meintjes & van der Westhuizen, 2018; Partridge et al., 2006). SG = Supergroup; Fm = Formation; Ma = million years; grey shading = formations impacted by the project.

Symbol	Group/Formation	Lithology	Approximate Age
Qa	Quaternary Kalahari sands	Alluvium, sand and soil	Neogene, ca 2.5 Ma to present
Qs	Quaternary Kalahari sands	Aeolian sand, flesh coloured	Neogene, ca 2.5 Ma to present
Qc	Quaternary Kalahari Sands	Calcrete, surface limestone, sand	Tertiary ca 65 – 5 Ma
Jd	Jurassic dolerite dyke	Dolerite	Ca 183 Ma, early Jurassic
Ra	Allanridge Fm, Pniel Group, Ventersdorp SG	Andesite, mafic lava, tuff; in places amygdaloidal or porphyritic (hatched); conglomerate lens near the base	<2708 Ma

The power line route lies in the southwestern part of the Ventersdorp Supergroup. According to van der Westhuizen et al. (2006), the Ventersdorp Supergroup developed in the second last of the four basins that developed on the Kaapvaal Craton after it had stabilised, between 3000 and 2100 million years ago. It provides a volcano-sedimentary supracrustal record and contains the largest and widespread sequence of volcanic rocks on the Kaapvaal Craton (ibid). The Ventersdorp Supergroup unconformably overlies the Witwatersrand Supergroup and is itself unconformably overlain by the Transvaal Supergroup. In the region considered here the uppermost formation of the Ventersdorp Supergroup is exposed, the Allanridge Formation (Figure 3). These rocks do not preserve fossils because they are volcanic in origin.

Terminal Karoo dolerite dykes, Jurassic age, have intruded through the Karoo Basin strata and are associated with a much younger phase of volcanism than the Ventersdorp Supergroup, the Drakensburg Basalts. Dolerite not preserve fossils.

Much younger sediments overlie vast areas of the Northern Cape Province and Botswana and these are various sands of Quaternary age and associated with the wide scale drying out of the continent.

Based on the early works of Leicester King, Partridge and Maud (1987, 2000) developed a model of three African Erosion Surfaces for southern Africa, from the Cretaceous to the Pliocene. During the Cretaceous Africa was very high, averaging about 2500-2000m above sealevel but the rifting apart of Gondwanaland and formation of the Atlantic and Indian Oceans, coastal erosion was rapid and the escarpment rapidly receded about 120km inland along the east and south coasts, but only 50km along the west coast. The newly exposed surface was called the African Erosion Surface. Their model has been challenged and modified by a number of researchers (Burke, 2011; Braun et al., 2014) who propose that mantle plumes caused uplift of the continent during the late Cretaceous, followed by

erosion and further uplift about 30-20 million years ago, The newer interpretations have been followed here.

Quaternary Kalahari sands overlie the whole farm Koodoesberg. Haddon and McCarthy (2005) proposed that the Kalahari basin formed as a response to down-warp of the interior of the southern Africa, probably in the Late Cretaceous. This, along with possible uplift along epeirogenic axes, back-tilted rivers into the newly formed Kalahari basin and deposition of the Kalahari Group sediments began. Sediments included basal gravels in river channels, sand and finer sediments. A period of relative tectonic stability during the mid-Miocene saw the silcretisation and calcretisation of older Kalahari Group lithologies, and this was followed in the Late Miocene by relatively minor uplift of the eastern side of southern Africa and along certain epeirogenic axes in the interior. More uplift during the Pliocene caused erosion of the sand that was then reworked and redeposited by aeolian processes during drier periods, resulting in the extensive dune fields that are preserved today.

There are numerous pans in the Kalahari, generally 3–4 km in diameter (Haddon and McCarthy, 2005). According to Goudie and Wells (1995) there are two conditions required for the formation of pans. Firstly, the fluvial processes must not be integrated, and second, there must be no accumulation of aeolian material that would fill the irregularities or depressions in the land surface. Favoured materials or substrates for the formation of pans in South Africa are Dwyka and Ecca shales and sandstones (ibid).

Most pans in the Kalahari Basin are filled by a layer of clayey sand or calcareous clays and are flanked by lunette dunes formed as a result of deflation of the pan floor during arid periods (Lancaster, 1978a, b; Haddon and McCarthy, 2005). At some localities in the south western Kalahari spring-fed tufas have formed at the margins of pans during periods where groundwater discharge was high (Lancaster, 1986). These tufas may contain evidence of algal mats and stromatolites and may also be associated with calcified reed and root tubes (Lancaster, 1986). Many of the pans are characterised by diatomaceous earth, diatomite or kieselguhr, a white or grey, porous, light-weight, fine-grained sediment composed mainly of the fossilised skeletons of diatoms. Associated with some palaeo-pans and palaeo-springs are fossil bones, root casts, pollen and archaeological artefacts. Well-known sites are Florisbad and Deelpan in the Free State, Wonderkrater in Limpopo and Bosluispan in the Northern Cape. In in this region under study is the Kathu Complex.

ii. Palaeontological context

The Venterdorp Supergroup andesites and the Jurassic dolerites do not preserve fossils.

In the overlying Kalahari sands there is a chance that fossils may occur but only in certain features. Windblown sands are transported and sorted so only very small fragments of stone, bone and sand would be deposited. Geomorphological features that might entrap fossils are palaeo-pans and palaeo-springs. They are visible in satellite imagery because of

their topography and often are associated with lunette dunes. Vegetation changes are also common. No such features are seen in the Google Earth images.

Good examples of pans with fossils occur in the Northern Cape. The Kathu Complex includes the excavated sites of Kathu Pan1 (KP1), Kathu Townlands and Bestwood 1 (BW 1). At Kathu Pan, evidence of early hominin occupation has been observed at multiple locations within the pan, but ESA deposits have only been excavated at KP 1. Stratum 4a at KP1 was dated by a combination of OSL and ESR/U-series to ca. 500 k BP. The lithic assemblage from St. 4a is characterized by a prepared core technology that produced both blades and points, and has been attributed to the Fauresmith industry. The lithic assemblage of the underlying St. 4b at Kathu Pan 1 is characterized by well-made handaxes, some bones and other tools (Beaumont, 2004; Walker et al., 2014; Lukich et al., 2020).

There is no geological or palaeontological reason why the Kalahari sands along the Riet River should be considered as more likely to preserve fossils than the rest of the Kalahari sands, but in the SAHRIS palaeosensitivity map below, the riverine area is orange (Figure 3).

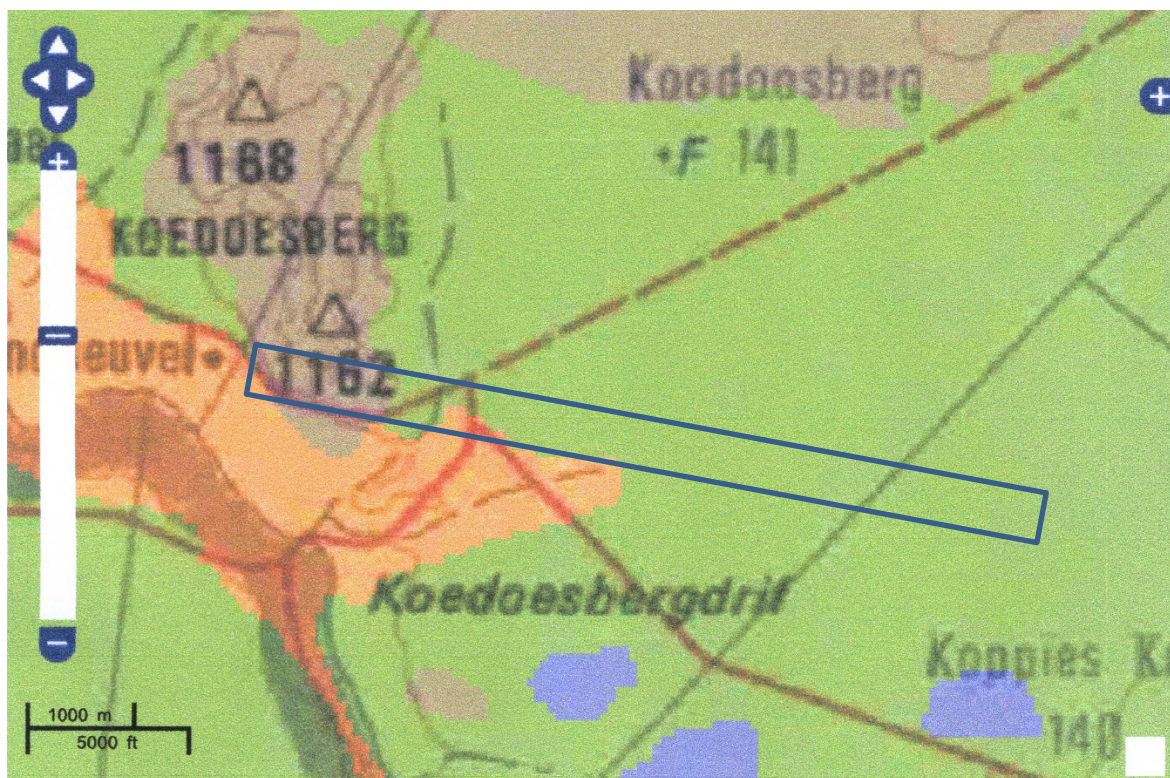


Figure 3: SAHRIS palaeosensitivity map for the proposed route for the 22 kV powerline between Coka and Cobe shown within the blue rectangles. Background colours indicate the following degrees of sensitivity: red = very highly sensitive; orange/yellow = high; green = moderate; blue = low; grey = insignificant/zero.

4. Impact assessment

An assessment of the potential impacts to possible palaeontological resources considers the criteria encapsulated in Table 3:

TABLE 3A: CRITERIA FOR ASSESSING IMPACTS

PART A: DEFINITION AND CRITERIA		
Criteria for ranking of the SEVERITY/NATURE of environmental impacts	H	Substantial deterioration (death, illness or injury). Recommended level will often be violated. Vigorous community action.
	M	Moderate/ measurable deterioration (discomfort). Recommended level will occasionally be violated. Widespread complaints.
	L	Minor deterioration (nuisance or minor deterioration). Change not measurable/ will remain in the current range. Recommended level will never be violated. Sporadic complaints.
	L+	Minor improvement. Change not measurable/ will remain in the current range. Recommended level will never be violated. Sporadic complaints.
	M+	Moderate improvement. Will be within or better than the recommended level. No observed reaction.
	H+	Substantial improvement. Will be within or better than the recommended level. Favourable publicity.
Criteria for ranking the DURATION of impacts	L	Quickly reversible. Less than the project life. Short term
	M	Reversible over time. Life of the project. Medium term
	H	Permanent. Beyond closure. Long term.
Criteria for ranking the SPATIAL SCALE of impacts	L	Localised - Within the site boundary.
	M	Fairly widespread – Beyond the site boundary. Local
	H	Widespread – Far beyond site boundary. Regional/ national
PROBABILITY (of exposure to impacts)	H	Definite/ Continuous
	M	Possible/ frequent
	L	Unlikely/ seldom

TABLE 3B: IMPACT ASSESSMENT

PART B: ASSESSMENT		
SEVERITY/NATURE	H	-
	M	-
	L	Aeolian sands do not preserve any fossils, but palaeo-pans or palaeo-spring might; so far there are no records from the footprint so it is very unlikely that fossils occur on the site. The impact would be very unlikely.
	L+	-
	M+	-
	H+	-
DURATION	L	-
	M	-
	H	Where manifest, the impact will be permanent.
SPATIAL SCALE	L	Since the only possible fossils within the area would be fossil bones, plants (and artefacts) from the late Quaternary, the spatial scale will be localised within the site boundary.
	M	-
	H	-

PART B: ASSESSMENT		
PROBABILITY	H	-
	M	-
	L	It is extremely unlikely that any fossils would be found in the loose aeolian sand that covers the region, but if pans or springs are present they might entrap fossils. Therefore, a Fossil Chance Find Protocol should be added to the eventual EMPr.

Based on the nature of the project, surface activities may impact upon the fossil heritage if preserved in the development footprint. The geological structures suggest that the rocks are either much too old to contain fossils or have been wind transported. Only such geomorphological features such as palaeo-pans or paleo-springs might entrap fossils. No such feature is visible in the satellite imagery. Since there is an extremely small chance that fossils may be disturbed a Fossil Chance Find Protocol has been added to this report. Taking account of the defined criteria, the potential impact to fossil heritage resources is extremely low.

5. Assumptions and uncertainties

Based on the geology of the area and the palaeontological record as we know it, it can be assumed that the formation and layout of the quartzites, sandstones, shales and sands are typical for the country and do not contain fossil plant, insect, invertebrate and vertebrate material. The loose sands of the Tertiary and Quaternary period would not preserve fossils. Only palaeo-pans or palaeo-springs could preserve fossils but no such feature is evident. The uncertainty is the highly sensitive indication for the same sands along the Riet River in the SAHRIS palaeosensitivity map.

6. Recommendation

Based on experience and the lack of any previously recorded fossils from the area, it is extremely unlikely that any fossils would be preserved in the Quaternary aeolian sands. There is a very small chance that fossils may occur in pans or springs but none is evident. Nonetheless, a Fossil Chance Find Protocol should be added to the EMPr: if fossils are found once drilling or excavations for pole foundations have commenced then they should be rescued and a palaeontologist called to assess and collect a representative sample.

7. References

Beaumont, P.B. 2004. Kathu Pan and Kathu Townlands/Uitkoms. In: Morris D, Beaumont PB, editors. Archaeology in the Northern Cape: Some Key Sites. Kimberley: McGregor Museum. 50–53.

- Braun, J., F. Guillocheau, C. Robin, G. Baby, and H. Jelsma (2014), Rapid erosion of the Southern African Plateau as it climbs over a mantle superswell. *Journal of Geophysical Research. Solid Earth* 119, 6093–6112, doi:10.1002/2014JB010998.
- Goudie, A.S., Wells, G.L., 1995. The nature, distribution and formation of pans in arid zones. *Earth Science Reviews* 38, 1–69.
- Haddon, I.G., McCarthy, T.S., 2005. The Mesozoic–Cenozoic interior sag basins of Central Africa: The Late-Cretaceous–Cenozoic Kalahari and Okavango basins. *Journal of African Earth Sciences* 43, 316–333.
- Lancaster, I.N., 1978a. The pans of the southern Kalahari, Botswana. *Geographical Journal* 144, 80–98.
- Lancaster, I.N., 1978b. Composition and formation of southern Kalahari pan margin dunes. *Zeitschrift für Geomorphologie* 22, 148–169.
- Lancaster, N., 1986. Pans in the southwestern Kalahari: a preliminary report. *Palaeoecology of Africa* 17, 59–67.
- Lukich, V., Cowling, S., Chazan, M., 2020. Palaeoenvironmental reconstruction of Kathu Pan, South Africa, based on sedimentological data. *Quaternary Science Reviews* 230, 106153. <https://doi.org/10.1016/j.quascirev.2019.106153>
- Meintjes, P.G., van der Westhuizen, W.A., 2018. Stratigraphy and Geochemistry of the Goedgenoeg and Makwassie Formations, Ventersdorp Supergroup, in the Bothaville area of South Africa. *South African Journal of Geology* 121(4), 339–362.
- Partridge, T.C., Maud, R.R., 1987. Geomorphic evolution of southern Africa since the Mesozoic. *South African Journal of Geology* 90, 179–208.
- Partridge, T.C., Maud, R.R., 2000. Macroscale geomorphic evolution of southern Africa. In: Partridge, T.C. and Maud, R.R. (eds). *The Cenozoic of Southern Africa*. Oxford University Press, New York. 406pp.
- Thomas, D.S.G., Shaw, P.A., 2002. Late Quaternary environmental change in central southern Africa: new data, synthesis, issues and prospects. *Quaternary Science Reviews* 21 (7), 783–797.
- Van der Westhuizen, W.A., de Bruijn, H., Meintjes, P.G., 2006. The Ventersdorp Supergroup. In: Johnson, M.R., Anhaeusser, C.R. and Thomas, R.J., (Eds). *The Geology of South Africa*. Geological Society of South Africa, Johannesburg / Council for Geoscience, Pretoria. pp 187–208.
- Walker, S.J.H., Lukich, V., Chazan, M., 2014. Kathu Townlands: A High Density Earlier Stone Age Locality in the Interior of South Africa. *PLoS ONE* 9(7): e103436. doi:10.1371/journal.pone.0103436.

8. Chance Find Protocol

Monitoring Programme for Palaeontology – to commence once the excavations / drilling activities begin.

1. The following procedure is only required if fossils are seen on the surface and when drilling/excavations commence.
2. When excavations begin the rocks and must be given a cursory inspection by the environmental officer or designated person. Any fossiliferous material (plants, insects, bone) should be put aside in a suitably protected place. This way the project activities will not be interrupted.
3. Photographs of similar fossil plants or bones must be provided to the developer to assist in recognizing the fossil plants in the shales and mudstones (for example see Figures 4, 5). This information will be built into the EMP's training and awareness plan and procedures.
4. Photographs of the putative fossils can be sent to the palaeontologist for a preliminary assessment.
5. If there is any possible fossil material found by the developer/environmental officer then the qualified palaeontologist sub-contracted for this project, should visit the site to inspect the selected material and check the dumps where feasible.
6. Fossil plants or vertebrates that are considered to be of good quality or scientific interest by the palaeontologist must be removed, catalogued and housed in a suitable institution where they can be made available for further study. Before the fossils are removed from the site a SAHRA permit must be obtained. Annual reports must be submitted to SAHRA as required by the relevant permits.
7. If no good fossil material is recovered then no site inspections by the palaeontologist will be necessary. A final report by the palaeontologist must be sent to SAHRA once the project has been completed and only if there are fossils.
8. If no fossils are found and the excavations have finished then no further monitoring is required.

Appendix A – Examples of fossils from the Tertiary and Quaternary.



Figure 4: Examples of fossils bones from a Quaternary deposit. Note their fragmentary nature.



Figure 5: Examples of silicified wood from Late Tertiary alluvial deposit.

Appendix B – Details of specialist

Curriculum vitae (short) - Marion Bamford PhD June 2021

i) Personal details

Surname : **Bamford**
First names : **Marion Kathleen**
Present employment : Professor; Director of the Evolutionary Studies Institute.
Member Management Committee of the NRF/DST Centre of Excellence Palaeosciences, University of the Witwatersrand, Johannesburg, South Africa-
Telephone : +27 11 717 6690
Fax : +27 11 717 6694
Cell : 082 555 6937
E-mail : marion.bamford@wits.ac.za ; marionbamford12@gmail.com

ii) Academic qualifications

Tertiary Education: All at the University of the Witwatersrand:

1980-1982: BSc, majors in Botany and Microbiology. Graduated April 1983.

1983: BSc Honours, Botany and Palaeobotany. Graduated April 1984.

1984-1986: MSc in Palaeobotany. Graduated with Distinction, November 1986.

1986-1989: PhD in Palaeobotany. Graduated in June 1990.

iii) Professional qualifications

Wood Anatomy Training (overseas as nothing was available in South Africa):

1994 - Service d'Anatomie des Bois, Musée Royal de l'Afrique Centrale, Tervuren, Belgium, by Roger Dechamps

1997 - Université Pierre et Marie Curie, Paris, France, by Dr Jean-Claude Koeniguer

1997 - Université Claude Bernard, Lyon, France by Prof Georges Barale, Dr Jean-Pierre Gros, and Dr Marc Philippe

iv) Membership of professional bodies/associations

Palaeontological Society of Southern Africa

Royal Society of Southern Africa - Fellow: 2006 onwards

Academy of Sciences of South Africa - Member: Oct 2014 onwards

International Association of Wood Anatomists - First enrolled: January 1991

International Organization of Palaeobotany – 1993+

Botanical Society of South Africa

South African Committee on Stratigraphy – Biostratigraphy - 1997 - 2016

SASQUA (South African Society for Quaternary Research) – 1997+
 PAGES - 2008 –onwards: South African representative
 ROCEEH / WAVE – 2008+
 INQUA – PALCOMM – 2011+onwards

vii) Supervision of Higher Degrees

All at Wits University

Degree	Graduated/completed	Current
Honours	11	2
Masters	11	4
PhD	11	4
Postdoctoral fellows	13	2

viii) Undergraduate teaching

Geology II – Palaeobotany GEOL2008 – average 65 students per year
 Biology III – Palaeobotany APES3029 – average 25 students per year
 Honours – Evolution of Terrestrial Ecosystems; African Plio-Pleistocene Palaeoecology;
 Micropalaeontology – average 2-8 students per year.

ix) Editing and reviewing

Editor: *Palaeontologia africana*: 2003 to 2013; 2014 – Assistant editor
 Guest Editor: *Quaternary International*: 2005 volume
 Member of Board of Review: *Review of Palaeobotany and Palynology*: 2010 –

Review of manuscripts for ISI-listed journals: 25 local and international journals

x) Palaeontological Impact Assessments

Selected – list not complete:

- Thukela Biosphere Conservancy 1996; 2002 for DWAF
- Vioolsdrift 2007 for Xibula Exploration
- Rietfontein 2009 for Zitholele Consulting
- Bloeddrift-Baken 2010 for TransHex
- New Kleinfontein Gold Mine 2012 for Prime Resources (Pty) Ltd.
- Thabazimbi Iron Cave 2012 for Professional Grave Solutions (Pty) Ltd
- Delmas 2013 for Jones and Wagener
- Klipfontein 2013 for Jones and Wagener
- Platinum mine 2013 for Lonmin
- Syferfontein 2014 for Digby Wells
- Canyon Springs 2014 for Prime Resources
- Kimberley Eskom 2014 for Landscape Dynamics
- Yzermyne 2014 for Digby Wells
- Matimba 2015 for Royal HaskoningDV
- Commissiekraal 2015 for SLR
- Harmony PV 2015 for Savannah Environmental

- Glencore-Tweefontein 2015 for Digby Wells
- Umkomazi 2015 for JLB Consulting
- Ixia coal 2016 for Digby Wells
- Lambda Eskom for Digby Wells
- Alexander Scoping for SLR
- Perseus-Kronos-Aries Eskom 2016 for NGT
- Mala Mala 2017 for Henwood
- Modimolle 2017 for Green Vision
- Klipoortjie and Finaalspan 2017 for Delta BEC
- Ledjadja borrow pits 2018 for Digby Wells
- Lungile poultry farm 2018 for CTS
- Olienhout Dam 2018 for JP Celliers
- Isondlo and Kwasobabili 2018 for GCS
- Kanakies Gypsum 2018 for Cabanga
- Nababeep Copper mine 2018
- Glencore-Mbali pipeline 2018 for Digby Wells
- Remhoogte PR 2019 for A&HAS
- Bospoort Agriculture 2019 for Kudzala
- Overlooked Quarry 2019 for Cabanga
- Richards Bay Powerline 2019 for NGT
- Eilandia dam 2019 for ACO
- Eastlands Residential 2019 for HCAC
- Fairview MR 2019 for Cabanga
- Graspan project 2019 for HCAC
- Lieliefontein N&D 2019 for EnviroPro
- Skeerpoort Farm Mast 2020 for HCAC
- Vulindlela Eco village 2020 for 1World
- KwaZamakhule Township 2020 for Kudzala
- Sunset Copper 2020 for Digby Wells
- McCarthy-Salene 2020 for Prescali
- VLNR Lodge 2020 for HCAC
- Madadeni mixed use 2020 for EnviroPro

xi) Research Output

Publications by M K Bamford up to June 2021 peer-reviewed journals or scholarly books: over 150 articles published; 5 submitted/in press; 10 book chapters.

Scopus h-index = 29; Google scholar h-index = 35; i10-index = 92

Conferences: numerous presentations at local and international conferences.

xii) NRF Rating

NRF Rating: B-2 (2016-2020)

NRF Rating: B-3 (2010-2015)

NRF Rating: B-3 (2005-2009)

NRF Rating: C-2 (1999-2004)

