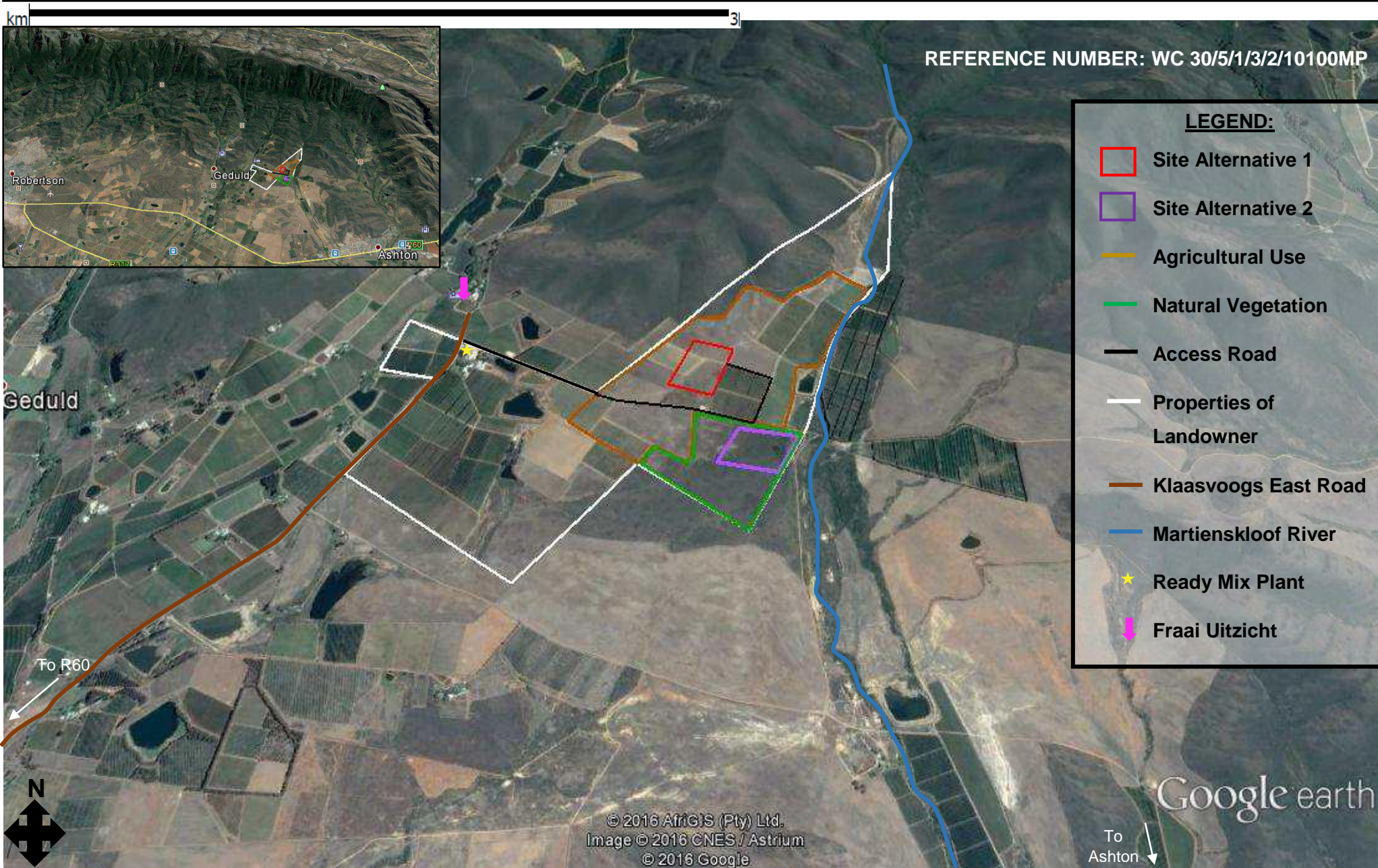


**LAND USE MAP FOR THE PROPOSED PROCESSING PLANT ON PORTION 3 OF THE FARM KLAAS VOOGDS RIVIER 37, ROBERTSON,  
WESTERN CAPE PROVINCE**



REFERENCE NUMBER: WC 30/5/1/3/2/10100MP

**LEGEND:**

-  Site Alternative 1
-  Site Alternative 2
-  Agricultural Use
-  Natural Vegetation
-  Access Road
-  Properties of Landowner
-  Klaasvoogs East Road
-  Martiensklouf River
-  Ready Mix Plant
-  Fraai Uitzicht

© 2016 AfriGIS (Pty) Ltd.  
Image © 2016 CNES / Astrium  
© 2016 Google

Google earth

To Ashton