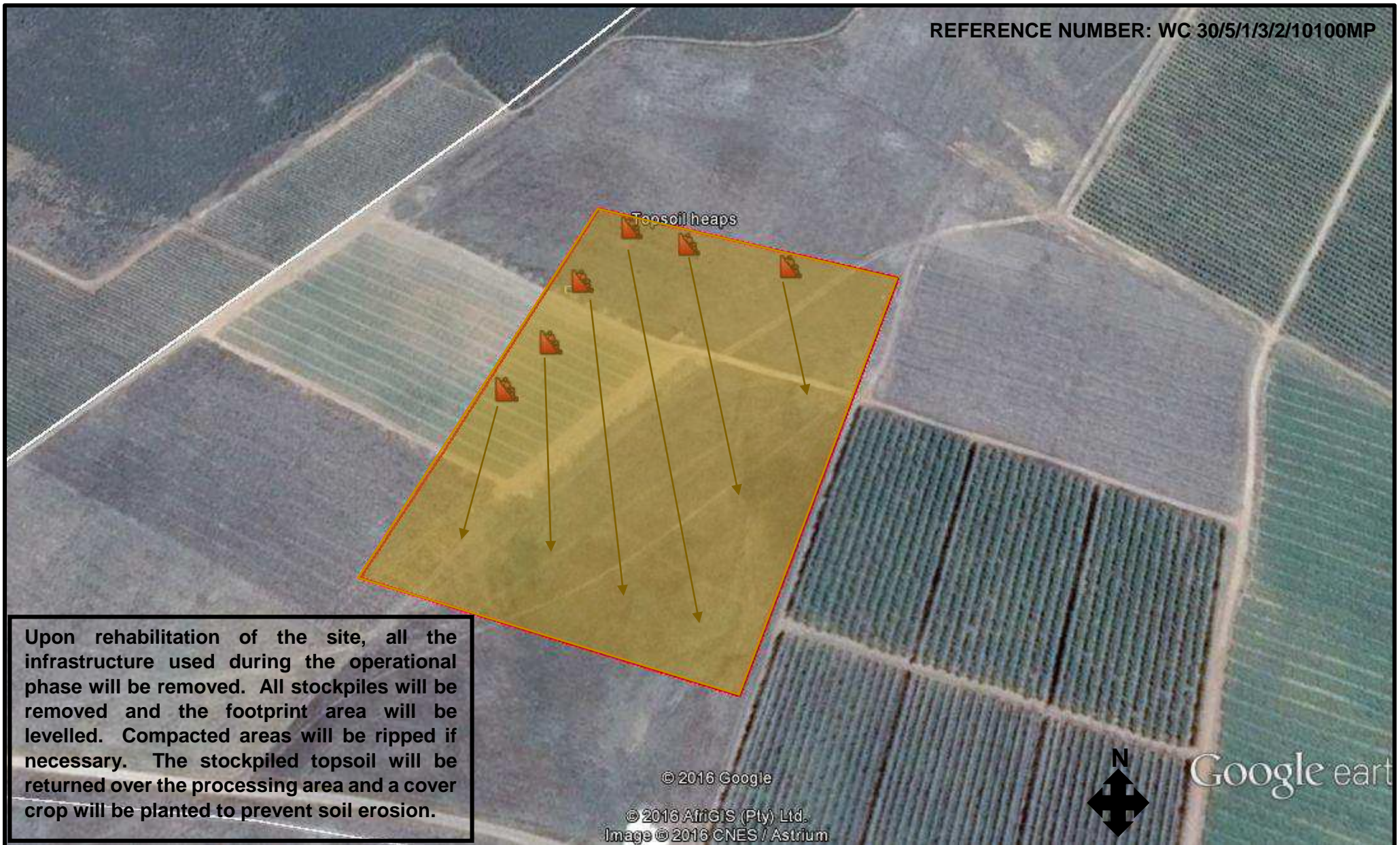


**REHABILITATION PLAN FOR THE PROPOSED PROCESSING PLANT ON PORTION 3 OF THE FARM KLAAS VOOGDS RIVIER 37, ROBERTSON,
WESTERN CAPE PROVINCE**

REFERENCE NUMBER: WC 30/5/1/3/2/10100MP



Upon rehabilitation of the site, all the infrastructure used during the operational phase will be removed. All stockpiles will be removed and the footprint area will be levelled. Compacted areas will be ripped if necessary. The stockpiled topsoil will be returned over the processing area and a cover crop will be planted to prevent soil erosion.