

COPYRIGHT

THIS DRAWING IS SUBJECT TO COPYRIGHT AND MAY NOT BE REPRODUCED IN WHOLE OR PART OR IN ANY MANNER WHATSOEVER WITHOUT WRITTEN PERMISSION FROM THE ARCHITECT

LEVELS AND HEIGHTS SHOWN

ALL FLOOR LEVELS ARE FFL AS INDICATED. UNFINISH CONCRETE LEVELS RELATIVE TO DATUM TO ALLOW ON SITE LEVEL 0,000 REG. LAND SURVEYOR TO CONFIRM ALL LEVELS AT STAGES OF CONSTRUCTION.

GENERAL NOTES

ALL CONSTRUCTION NOTES TO BE IN ACCORDANCE WITH ATTACHED SPECIFICATIONS

SANS 10400-A:2010 Edition 3

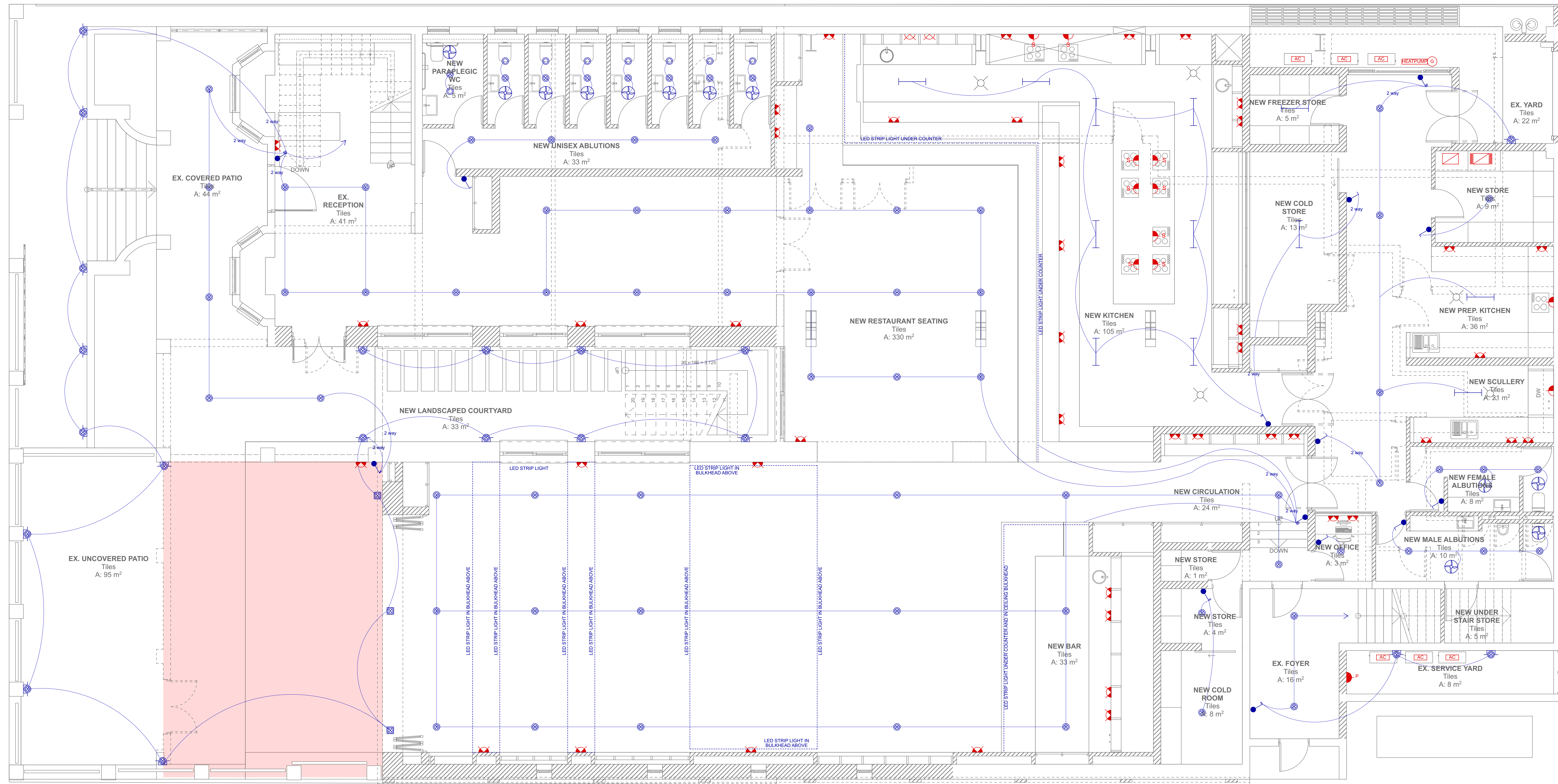
- Part A: General principles and requirements.
- Part B: Structural design.
- Part C: Dimensions.
- Part D: Public safety.
- Part E: Site operations.
- Part F: Foundations.
- Part G: Floors.
- Part H: Walls.
- Part I: Roofs.
- Part M: Stairways.
- Part N: Gasling.
- Part O: Lighting and ventilation.
- Part P: Drainage.
- Part Q: Non-sustainable means of sanitary disposal.
- Part R: Stormwater disposal.
- Part S: Facilities for persons with disabilities.
- Part T: Fire protection.
- Part V: Space heating.
- Part W: Fire installation.

SABS SYMBOLS LIST

- Access opening AO
- Air Brick AB
- Amortising unit AC
- Bath B
- Basin BA
- Balustrade BA
- Cast iron CI
- Cleaning eye CE
- Concrete CONC
- Copper COP
- Cover level CL
- Dish D
- Dish washer DW
- extractor over ED
- Fire cement FC
- full bore outlet FBO
- Galvanneal mild steel GMS
- Grease trap GT
- Ground level GL
- Gully G
- Inspection chamber IC
- Inspection eye IE
- Inset level IL
- Merhole MH
- Push-incorporated fibre PIF
- Ranwater pipe RWP
- Reinforced concrete RC
- Roofing eye RE
- Shower SH
- Sink S
- Soil stopper SS
- Soil pipe SP
- Stainless steel SS
- Storm water channel SWC
- Storm water pipe SWP
- Two way vent valve 2WVV
- Unfinished polyurethane U
- uPVC uPVC
- Unit U
- Vent or venting pipe VP
- Ventilated clay VC
- Wash-basin WB
- Wash-trough WT
- Waste pipe WP
- washing machine WM
- Toilet pan TP
- Water tap WT
- tumble dryer TD
- Overflow pipe OP
- Weep Pipe WEP

ELECTRICAL LEGEND

- LIGHTING**
- Switch point
 - Downlight Point - Recessed unless otherwise stated
 - Wall mounted light @ 2100mm AFFL
 - Water resistant floor mounted spotlight
 - Linear light point - suspended
 - Motion sensor - for lighting and extractor
 - Extractor Fan
 - Submersible Light Point
- POWER**
- Distribution Board
 - ITC Distribution Board
 - Heatpump as per XA report
 - Geysers - capacity as per XA report
 - Stove Isolator Point
 - Combo S.S.O point to later detail
 - S.S.O point to later detail
 - A/C Point
 - Pool Pump supply point



REV	DATE	DESCRIPTION



Stefano Vatteroni Architects

163 FLORIDA ROAD, DURBAN
SOUTH AFRICA
DURBAN
031 201 1111
stefano@stefanoarch.com
031 201 1111
stefano@stefanoarch.com
031 201 1111

JOB TITLE
PROPOSED REFURBISHMENT WITH ADDITIONS & ALTERATIONS

ZHUMA RESTAURANT
153 FLORIDA ROAD, DURBAN
ERF 910

Drawing Name
GROUND FLOOR ELECTRICAL LAYOUT

Drawn on Apple Mac computer using Archicad 23 by
NCUBENKO NOLELA 2023/04/28
Checked by STEFANO VATTERONI 2023/04/28

Drawing Scale
1:100 / 1:200 /

Building Occupancy A1

Layout ID CS.104 Page Size A1 Revision