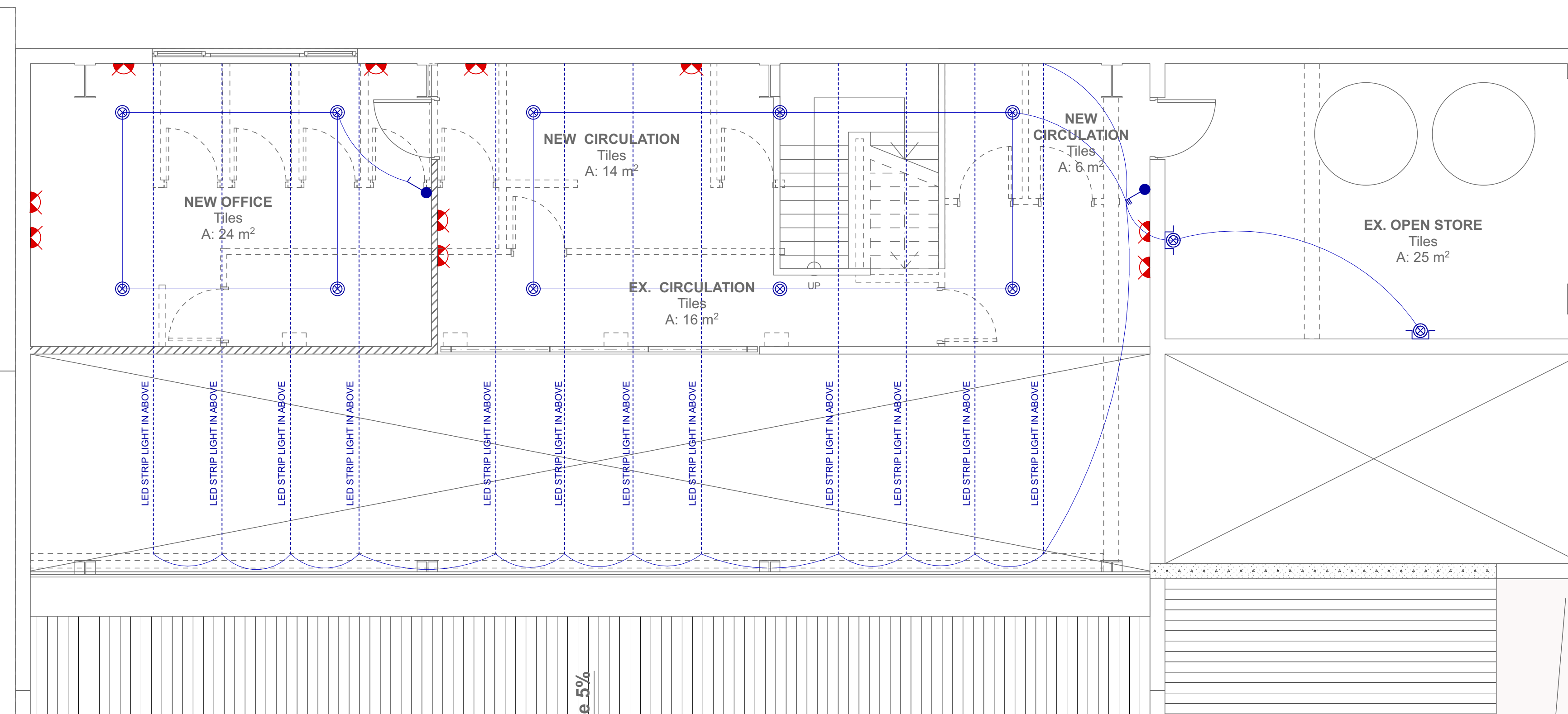


First Floor Electrical Layout
1:50



Mezzanine Electrical Layout
1:50

COPYRIGHT

THIS DRAWING IS SUBJECT TO COPYRIGHT AND MAY NOT BE REPRODUCED IN WHOLE OR PART OR IN ANY MANNER WHATSOEVER WITHOUT THE WRITTEN PERMISSION FROM THE ARCHITECT

LEVELS AND HEIGHTS SHOWN

ALL FLOOR LEVELS ARE AFFL AS INDICATED. UNFINISH CONCRETE LEVELS RELATIVE TO DATUM TO BE DETERMINED BY ENGINEER AND CONTRACTOR TO ALLOW ON SITE LEVEL 0,000 REG. LAND SURVEYOR TO CONFIRM ALL LEVELS AT STAGES OF CONSTRUCTION

GENERAL NOTES

ALL CONSTRUCTION NOTES TO BE IN ACCORDANCE WITH ATTACHED SPECIFICATIONS

SANS 10400-A:2010 Edition 3

Part A: General principles and requirements.
Part B: Structural design.
Part C: Dimensions.
Part D: Fabric safety.
Part E: Site operations.
Part G: Excavations.
Part H: Foundations.
Part J: Floor.
Part K: Walls.
Part L: Roofs.
Part M: Stairways.
Part N: Glazing.
Part O: Lighting and ventilation.
Part P: Drainage.
Part Q: Non-metallic waste means of sanitary disposal.
Part R: Stormwater disposal.
Part S: Facilities for persons with disabilities.
Part T: Fire protection.
Part V: Space heating.
Part W: Fire installation.

SABS SYMBOLS LIST

Access opening	AO
Air Brick	AB
Air conditioning unit	AC
Bath	B
Bell	BT
Balustrade	BS
Cast iron	CI
Cleaning eye	CE
Concrete	CONC
Copper	COP
Cover level	CL
Duct	D
Dish washer	DW
extractor over	EOD
Fire cabinet	FC
full bore outlet	FBO
Galvanized mild steel	GMS
Grease trap	GT
Ground level	GL
Gully	G
Inspection chamber	IC
Inspection eye	IE
Inset level	IL
Merhole	MF
Push-irrigated fibre	PIF
Rainwater pipe	RWP
Reinforced concrete	RC
Roofing eye	RE
Showers	SW
Sink	S
Sink tap	ST
Soil pipe	SP
Stainless steel	SS
Storm water channel	SWC
Storm water pipe	SWP
Two way vent valve	2WVV
Unfinished polyurethane	uPVC
Unit	U
Vent or ventilating pipe	VP
Vertified clay	VC
Wash-basin	WB
Wash-knigh	WT
Waste pipe	WP
washing machine	WM
Toilet pan	WC
Water tap	WT
tumble dryer	TD
Cherflow pipe	CFP
Weep Pipe	WEP

ELECTRICAL LEGEND

	Switch point
	Downlight Point - Recessed unless otherwise stated
	Wall mounted light @ 2100mm AFFL
	Water resistant floor mounted spotlight
	Linear light point - suspended
	Motion sensor - for lighting and extractor
	Extractor Fan
	Submersible Light Point
POWER	
	Distribution Board
	ITC Distribution Board
	Heatpump as per XA report
	Geyser - capacity as per XA report
	Stove Isolator Point
	Combo S.S.O point to later detail
	S.S.O point to later detail
	A/C Point
	Pool Pump supply point

AUTHORITY STAMPS

SIGNATURES	
ARCHITECT	STEFANO VATTERONI
CLIENT	
ENGINEER	

ZUMA
COUNCIL SUBMISSION

REV	DATE	DESCRIPTION

Stefano Vatteroni Architects
ARCHITECT

16 JACKIE LUTZ PLACE, SANDHURST, CAPE TOWN

SOUTH AFRICA
SUITE 414 RICHIE PARK
GARDENS, LINDAVILLE, JHB 4014 +27 11 66633307
Durban
KZN 4011
stefanovatteroni@stefano.com
tel: 031 5555333 SACAP NO. 7188

WALAH
P.O. BOX 1001, LILJONGHE
Mg. 10253, 102118 MA. reg. 746

Client Information
Name: ZUMA Restaurant
Contact No: 031 555 5333
Email: stefano@stefano.com

Job Title:
PROPOSED REFURBISHMENT WITH ADDITIONS & ALTERATIONS

ZHUMA RESTAURANT
153 FLORIDA ROAD, DURBAN
ERF 910

Drawing Name:
FIRST & MEZZANINE FLOOR ELECTRICAL LAYOUT

Drawn on Apple Mac computer using ArchiCAD 23 by
NKUBENKO NOLELA 2023/04/28
Checked by STEFANO VATTERONI Date 2023/04/28

Drawing Scale:
1:100 / 1:200 /
Building Occupancy **A1**

Layout ID **CS.105** Page Size **A1** Revision