

LEGEND:

- 30m FIRE HOSE REEL + 2 X 4.5kg DCP FE
- 4.5kg DCP FE
- FIRE ESCAPE DIRECTION ARROW
- CLASS B FIRE FOOR (120 MIN) WITH SELF CLOSER & APPROVED LOCK (HALF THUMB TURN OR OTHER APPROVED). ACCESS CONTROLLED DOORS TO BE LINKED TO FIRE DETECTION SYSTEM WITH MANUAL OVER-RIDE BUTTON (GREEN BREAK CALLS BUTTON)
- SOLID CORE DOOR WITH SELF CLOSER & APPROVED LOCK (HALF THUMB TURN OR OTHER APPROVED). ACCESS CONTROLLED DOORS TO BE LINKED TO FIRE DETECTION SYSTEM WITH MANUAL OVER-RIDE BUTTON (GREEN BREAK CALLS BUTTON)
- 120 MINUTE FULL HEIGHT FIRE WALL
- 30 MINUTE FULL HEIGHT FIRE WALL
- PRESSURIZATION PER BS EN 1201
- ALL ESCAPE DOORS FITTED WITH APPROVED LOCKING DEVICES (HALF THUMB TURN OR OTHER APPROVED). ACCESS CONTROLLED DOORS TO BE LINKED TO FIRE DETECTION SYSTEM WITH MANUAL OVER-RIDE BUTTON (GREEN BREAK CALLS BUTTON)
- ELECTRONICALLY ILLUMINATED EXIST SIGN WITH 60 MINUTE BATTERY BACK UP/GENERATOR BACK UP POWER BY ELECTRICAL ENGINEER.

COPYRIGHT

THIS DRAWING IS SUBJECT TO COPYRIGHT AND MAY NOT BE REPRODUCED IN WHOLE OR PART OR IN ANY MANNER WITHOUT THE WRITTEN PERMISSION FROM THE ARCHITECT

LEVELS AND HEIGHTS SHOWN

ALL FLOOR LEVELS ARE FFL AS INDICATED. UNFINISH CONCRETE LEVELS RELATIVE TO DATUM TO BE DETERMINED BY ENGINEER AND CONTRACTOR TO ALLOW ON SITE LEVEL 0,000 REG. LAND SURVEYOR TO CONFIRM ALL LEVELS AT STAGES OF CONSTRUCTION

GENERAL NOTES

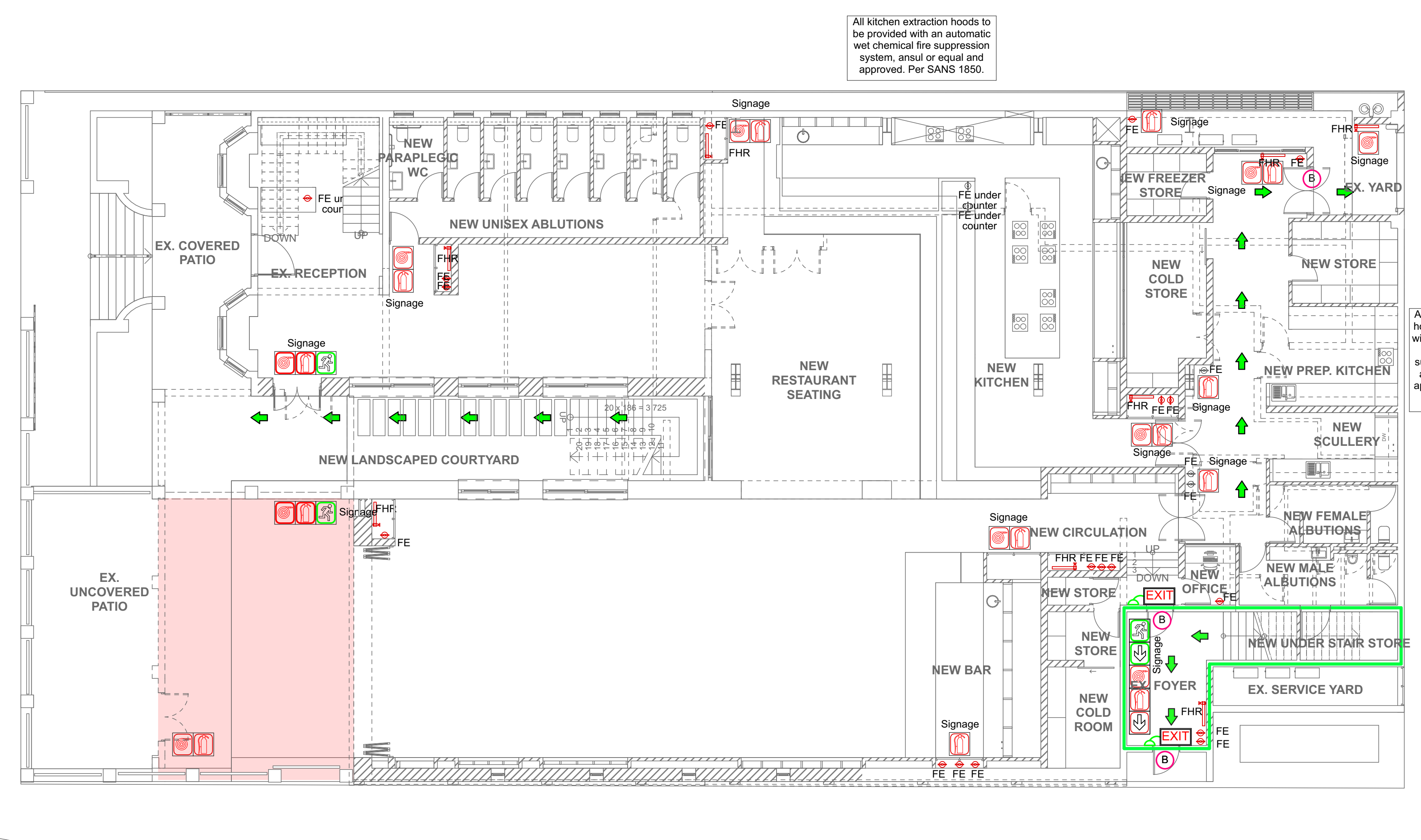
ALL CONSTRUCTION NOTES TO BE IN ACCORDANCE WITH ATTACHED SPECIFICATIONS

SANS 10400-A:2010 Edition 3

Part A: General principles and requirements.
Part B: Structural design.
Part C: Dimensions.
Part D: Fire safety.
Part E: Site operations.
Part G: Excavations.
Part H: Foundations.
Part J: Floor.
Part K: Walls.
Part L: Roofs.
Part M: Stairways.
Part N: Glazing.
Part O: Lighting and ventilation.
Part P: Drainage.
Part Q: Non-water-borne means of sanitary disposal.
Part R: Stormwater disposal.
Part S: Facilities for persons with disabilities.
Part T: Fire protection.
Part V: Space heating.
Part VV: Fire installation.

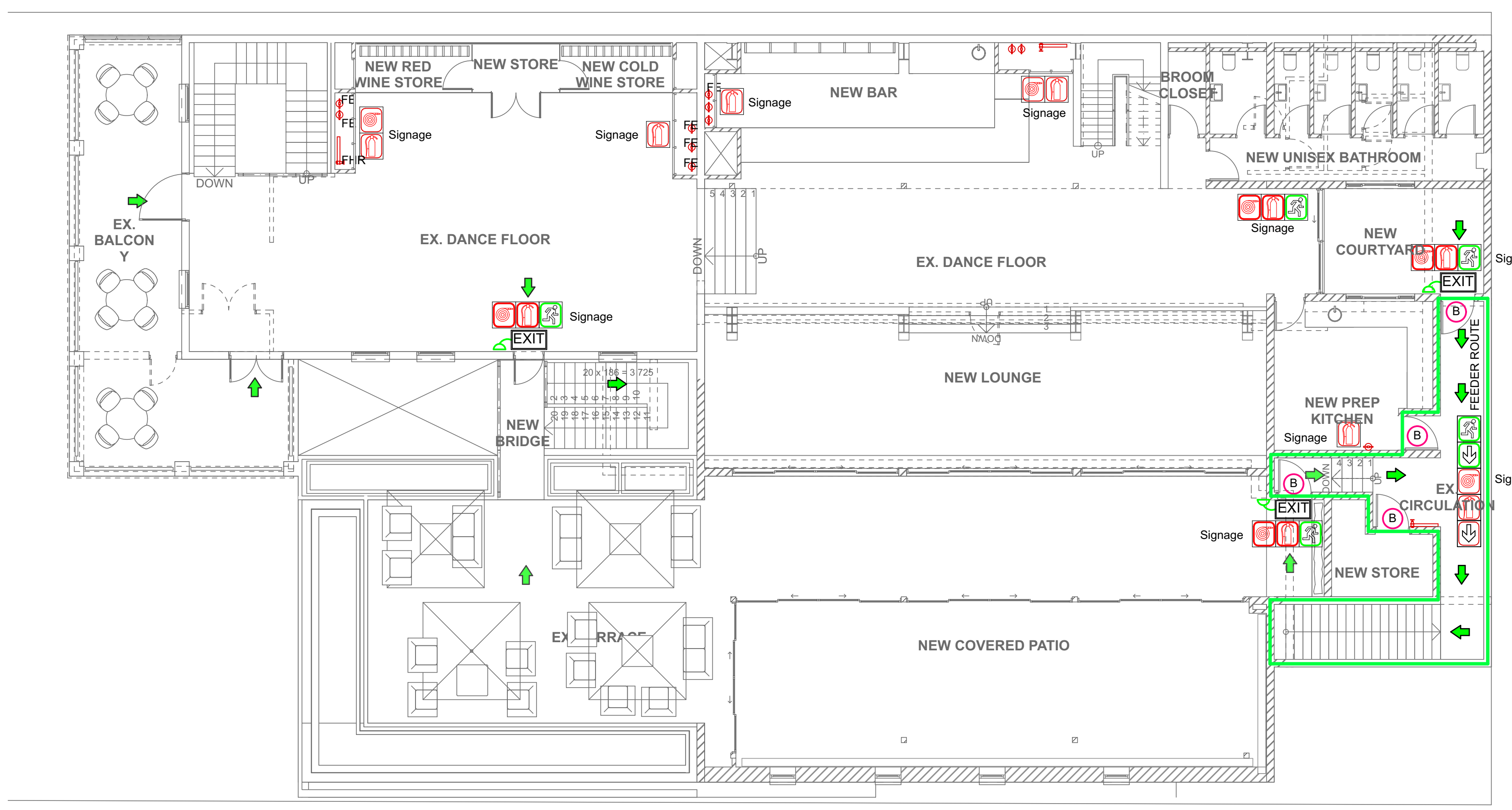
SABS SYMBOLS LIST

Access opening	AO
Air Brick	AB
Amortising unit	AC
Bath	B
Basin	BT
Blind	BL
Cast iron	CI
Cleaning eye	CE
Concrete	CONC
Copper	COP
Cover level	CL
Duct	D
Dish washer	DW
extractor over	EO
Fire cement	FC
full bore outlet	FBO
Galvanneal mild steel	GMS
Grease trap	GT
Ground level	GL
Gully	G
Inspection chamber	IC
Inspection eye	IE
Inset door	ID
Merhole	MH
Push-irrigated fibre	PIF
Rainwater pipe	RWP
Reinforced concrete	RC
Roofing eye	RE
Shower	SW
Sink	S
Sink hopper	SH
Soil pipe	SP
Stainless steel	SS
Storm water channel	SWC
Storm water pipe	SWP
Two way vent valve	2WVV
Uniquelized polyvinyl chloride	uPVC
Unit	U
Vent or ventilating pipe	VP
Vertif clay	VC
Wash-basin	WB
Wash-trough	WT
Waste pipe	WP
washing machine	WM
Toilet pan	WC
Water tap	WT
tumble dryer	TD
Overflow pipe	OP
Weep Pipe	WEP



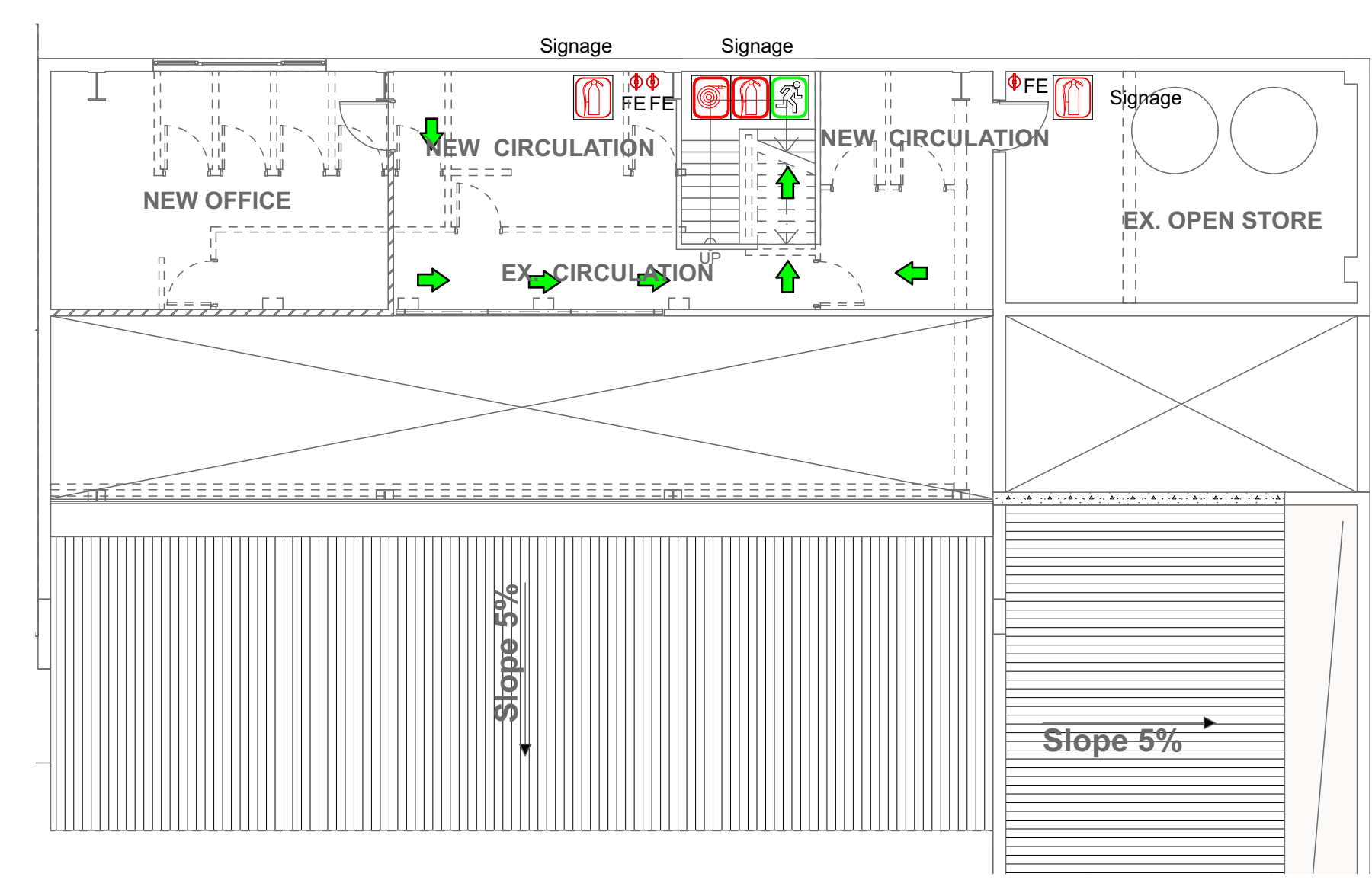
Ground Floor Fire Plan 1:100

1.



First Floor Fire Plan 1:100

2.



Mezzanine Fire Plan 1:100

3.

REV	DATE	DESCRIPTION	REVISIONS



Stefano Vatteroni Architects
S.A. (Pty) Ltd. ARCHITECTS, CIVIL ENGINEERS

SOUTH AFRICA
SUITE 414 RICHU, PARKS
GARDENS, UMBHANGA, JHB 471 10603307
Durban
KZN 4001
stefanovatteroni@stefano.com SACAP NO. 1188
REG. 2016/23493/23

WALUKI
P.O. BOX 1001, LILWANE
REG. 1005/102118 MA Reg. 746

Client Information
Name: ZUMA Restaurant
Contact No: 031 401 1000
Email: ZUMA@zuma.com

JOB TITLE
PROPOSED REFURBISHMENT WITH ADDITIONS & ALTERATIONS

ZHUMA RESTAURANT
153 FLORIDA ROAD, DURBAN
ERF 910

Drawing Name
FIRE PLAN

Drawn on Apple Mac computer using Archicad 23 by
NKUBENKO NOLELA 2023/04/28
Checked by
STEFANO VATTERONI 2023/04/28

Drawing Scale
1:100 / 1:200 /

Building Occupancy **A1**

Layout ID **CS.106** Page Size **A1** Revision