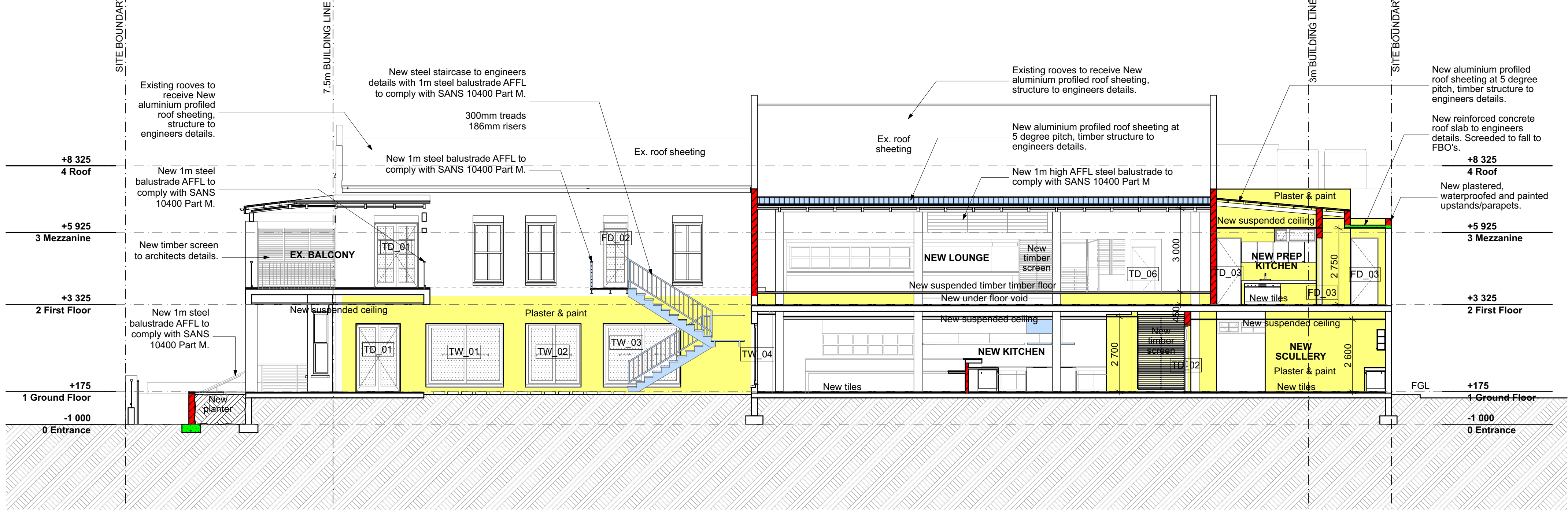
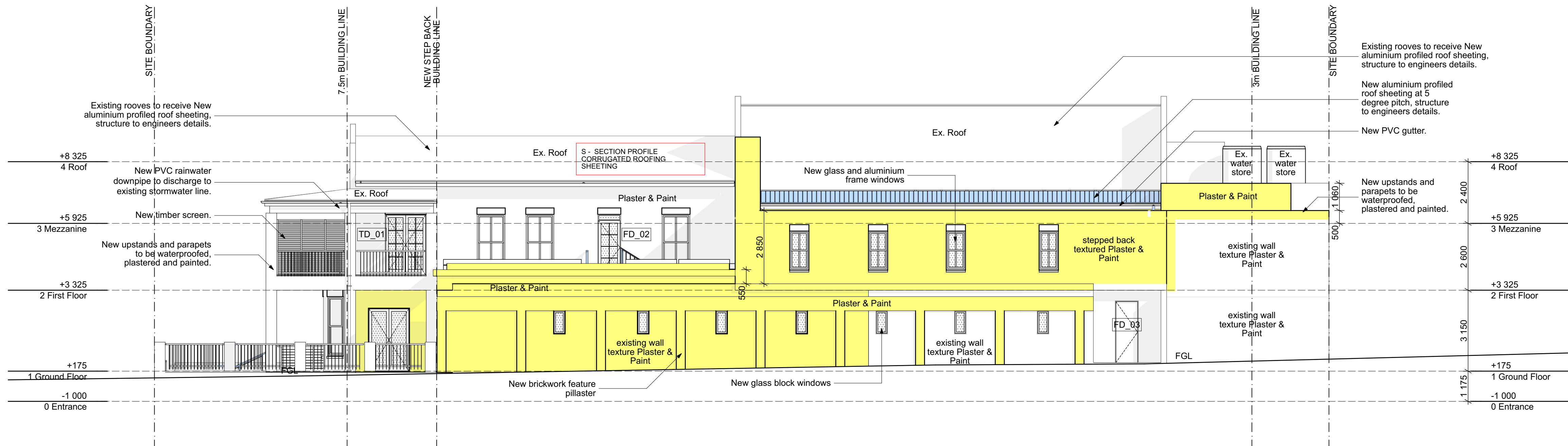


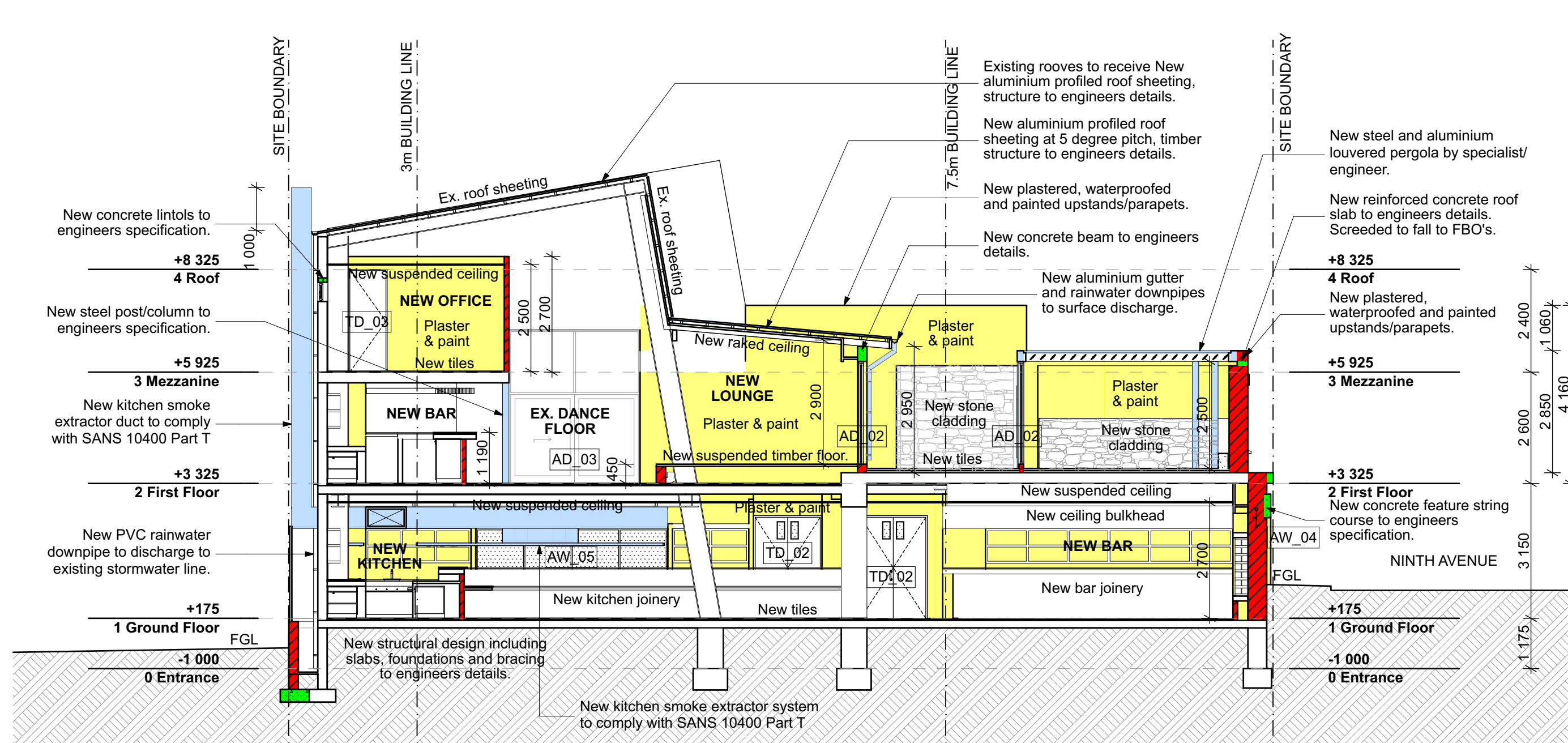
North East Elevation
1:100



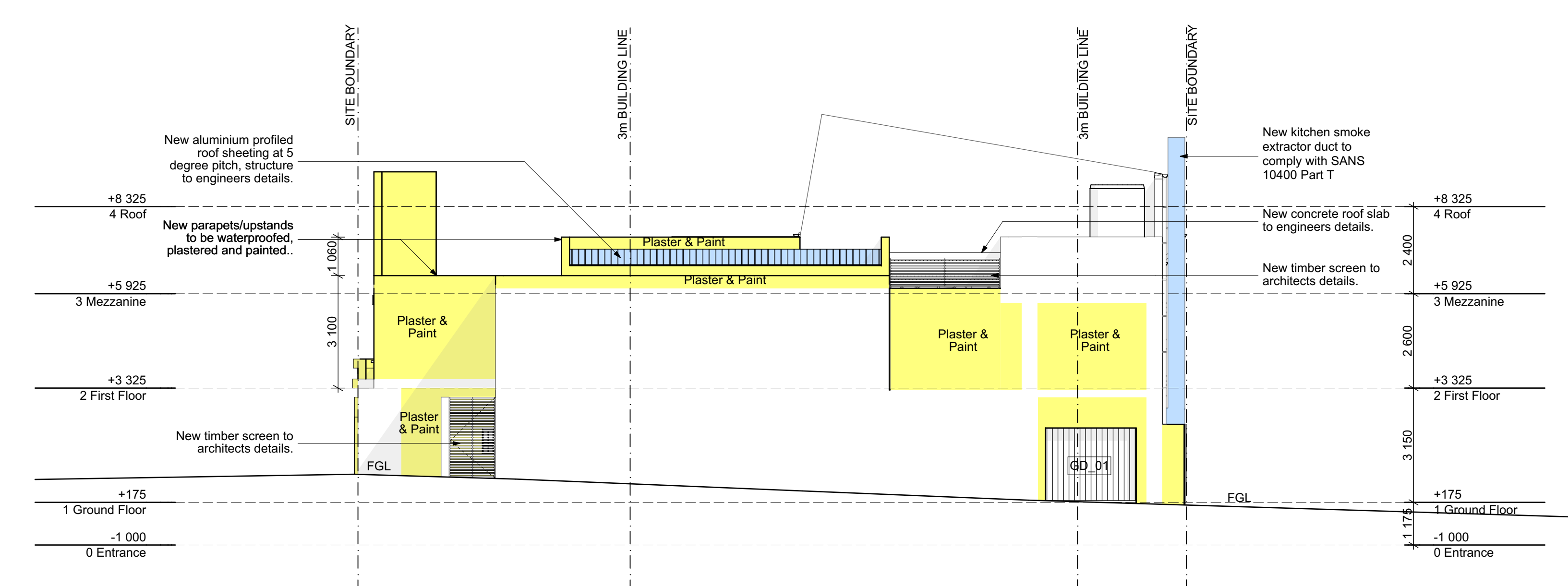
Building Section S-1
1:100



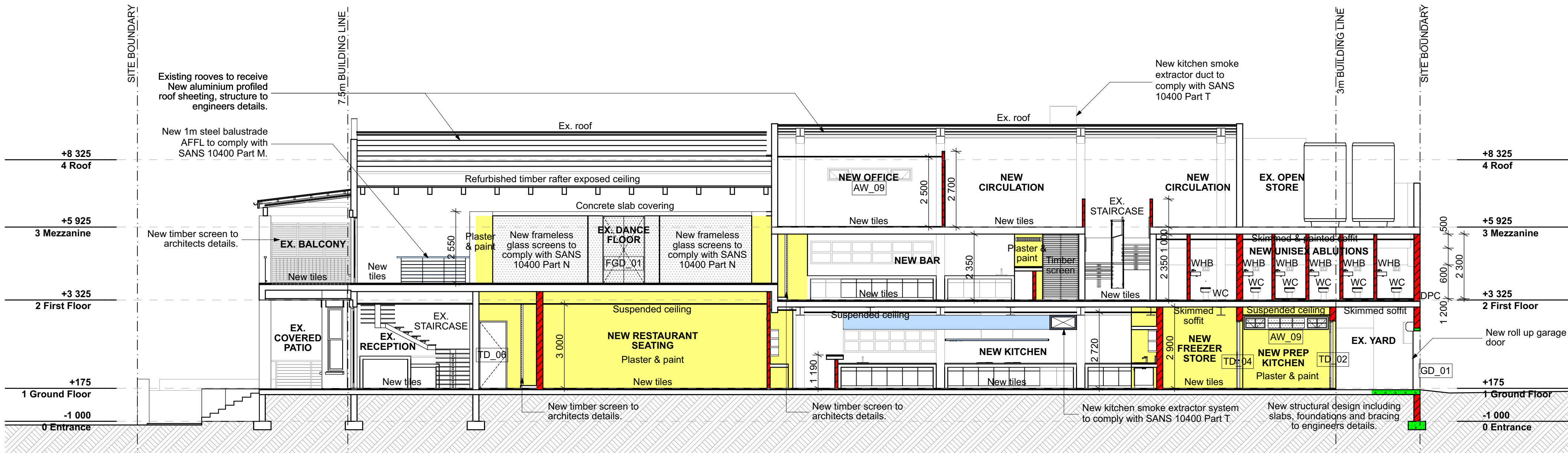
North West Elevation
1:100



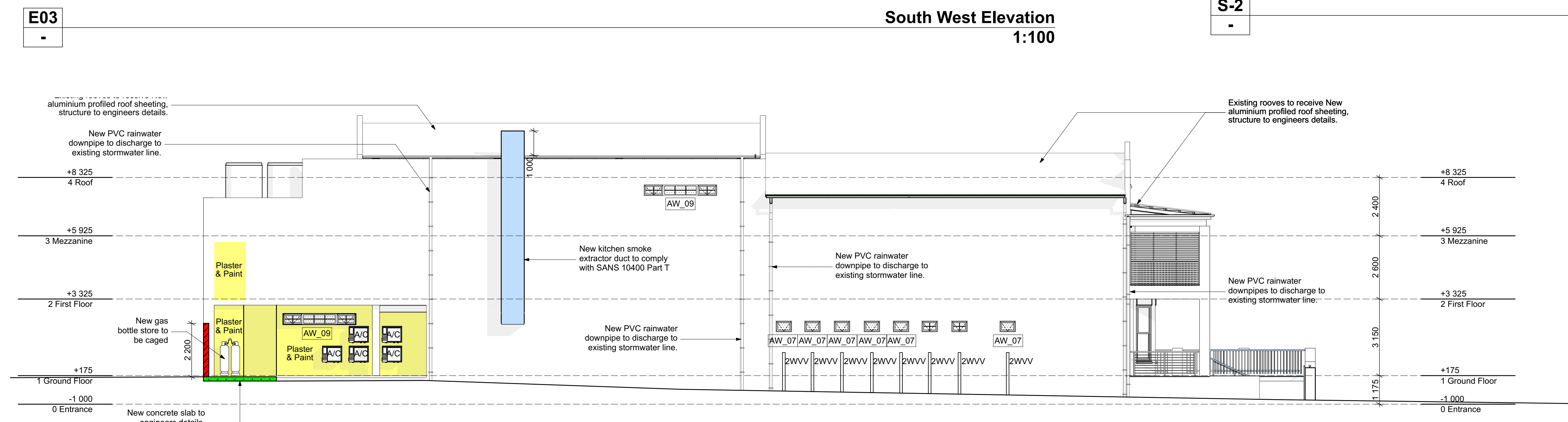
Building Section S-2
1:100



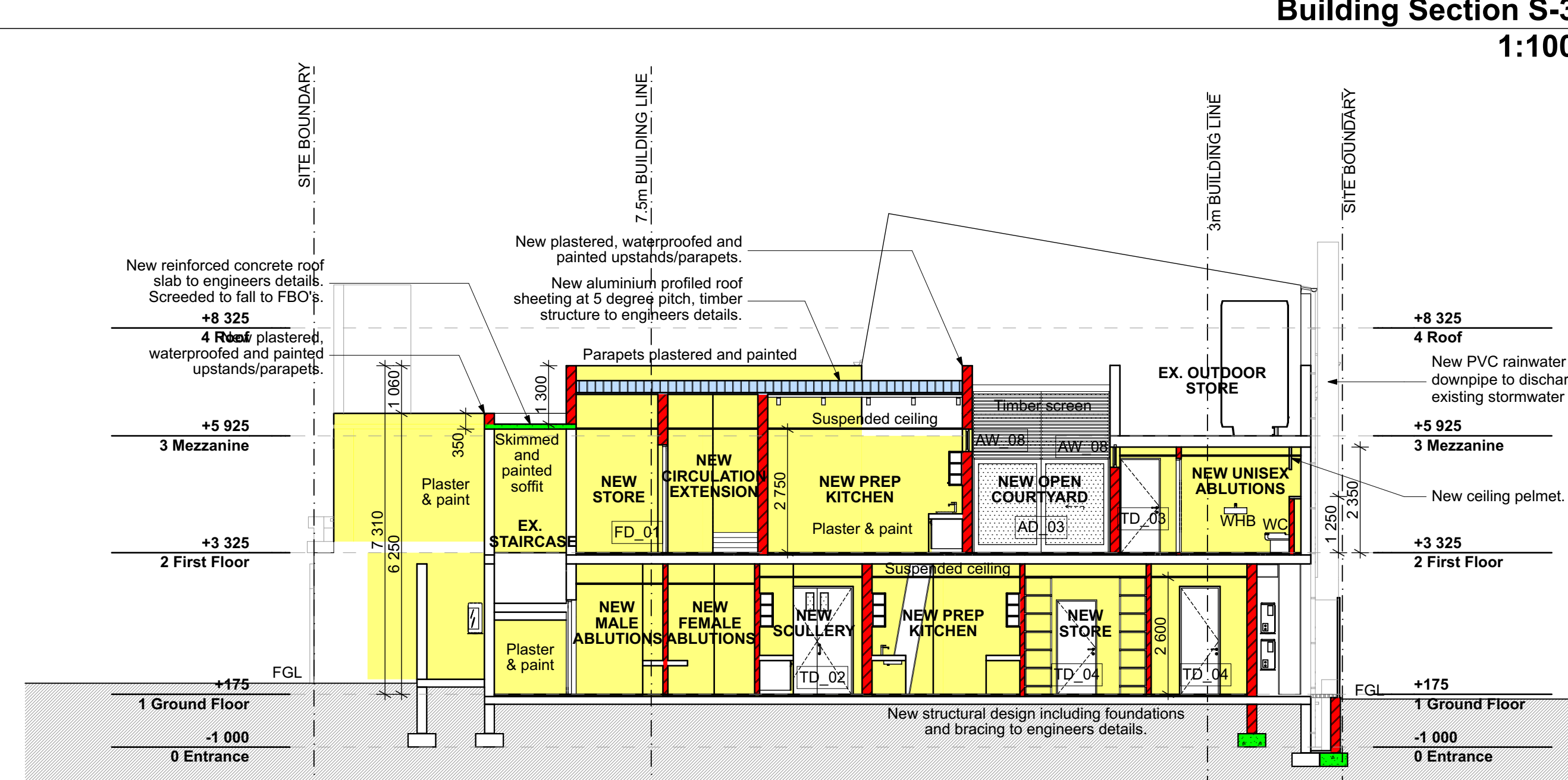
South West Elevation
1:100



Building Section S-3
1:100



South East Elevation
1:100



Building Section S-4
1:100

E01
-

E02
-

E03
-

E04
-

S-1
-

S-2
-

S-3
-

S-4
-

COPYRIGHT
THIS DRAWING IS SUBJECT TO COPYRIGHT AND MAY NOT BE REPRODUCED IN WHOLE OR PART OR IN ANY MANNER WITHOUT THE WRITTEN PERMISSION FROM THE ARCHITECT
LEVELS AND HEIGHTS SHOWN
ALL FLOOR LEVELS ARE FFL AS INDICATED: UNFINISHED CONCRETE LEVELS RELATIVE TO DATUM TO BE ESTABLISHED BY ENGINEER AND CONTRACTOR TO ALLOW ON SITE LEVEL 0.000 RED LANE SURVEY TO CONFIRM ALL LEVELS AT STAGES OF CONSTRUCTION
GENERAL NOTES
ALL CONSTRUCTION NOTES TO BE IN ACCORDANCE WITH ATTACHED SPECIFICATIONS SANS 10400-A:2010 Edition 3 Part A: General principles and requirements. Part B: Structural design. Part C: Dimensions. Part D: Public safety. Part E: Site operations. Part F: Foundations. Part G: Excavations. Part H: Roofs. Part I: Walls. Part L: Roads. Part M: Stormwater. Part N: Glazing. Part O: Lighting and ventilation. Part P: Drainage. Part Q: Non-sustainable means of sanitary disposal. Part R: Stormwater disposal. Part S: Facilities for persons with disabilities. Part T: Fire protection. Part V: Space heating. Part W: Fire installation.
SABS SYMBOLS LIST
Access opening AD Air Brick AB Air conditioning unit AC Bath B Bed B Belt B Bulb B Cable CE Cleaning eye CE Cover level CL Duct D Dish washer DW Extractor over EO Fire cabinet FC Full bore outlet FBO Galvanized mild steel GMS Grease trap GT Ground level GL Gully G Inspection chamber IC Inspection eye IE Inert level IL Manhole MH Pit-in-manhole PIM Rainwater pipe RWP Reinforced concrete RC Roofing eye RE Screen SC Sink S Step hanger SH Soil pipe SP Stainless steel SS Storm water channel SWC Storm water pipe SWP Two way vent valve ZWV Unsanitized polyvinyl chloride UPVC Vent or venting pipe VP Verified clay VC Wash-basin WB Wash-trough WT Waste pipe WP Washing machine WM Water tap WT Tumble dryer TD Overflow pipe OVP Weep Pipe WEP

AUTHORITY STAMPS
SIGNATURES
- ARCHITECT STEFANO VATTERONI
- CLIENT
- ENGINEER

ZUMA
COUNCIL SUBMISSION

REV	DATE	DESCRIPTION



Stefano Vatteroni Architects
84001 JCT1 PT. ASH MOUNT, GLENVIEW, NSW 1570

SOUTH AFRICA
SUITE 414 RICHARD PHILLIPS
GARDENS, GLENVIEW, PHOENIX 127 1600010007
Durban
4201 4201
stefanovatteroni@zuma.co.za
REG. 2015/023420/2015 SACAP REG. 7189

MAKING
P.O. BOX 1001 LONDON
REG. 10001 1001010101 MAKING 746

Client Information
Name: ZUMA
Contact No: 0800 000 000
Email: info@zuma.co.za

Job Title
PROPOSED REFURBISHMENT WITH ADDITIONS & ALTERATIONS

ZHUMA RESTAURANT
153 FLORIDA ROAD, DURBAN
ERF 910

Drawing Name
ELEVATIONS & SECTIONS

Drawn on Apple Mac computer using AutoCAD 23 by
NKUBENKO NOLELA 2023/04/28
Checked by STEFANO VATTERONI 2023/04/28

Drawing Scale
1:100 / 1:200 /

Building Occupancy
A1

Layout ID
CS.108 Page Size
A1 Revision