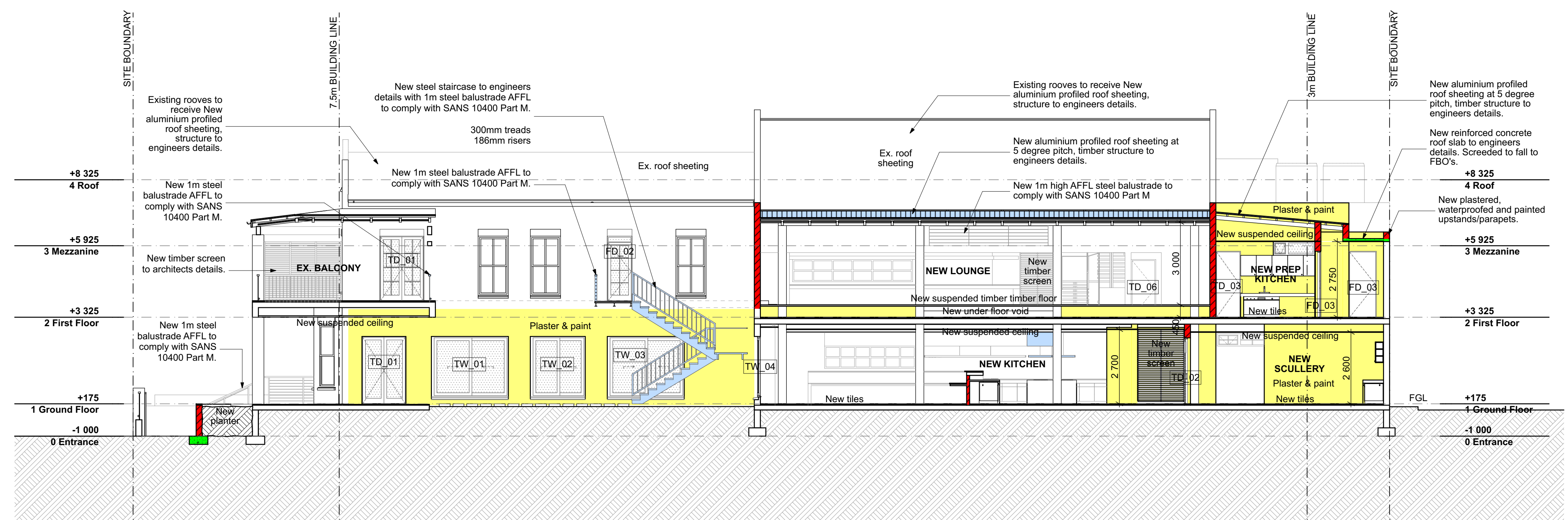


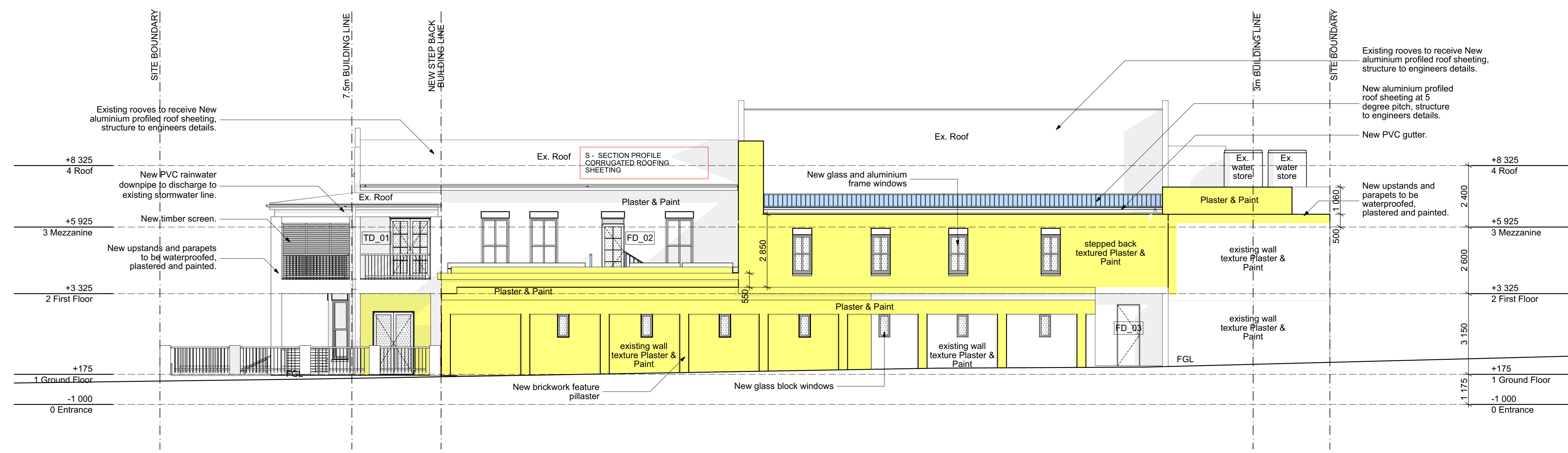
North East Elevation
1:100

E01



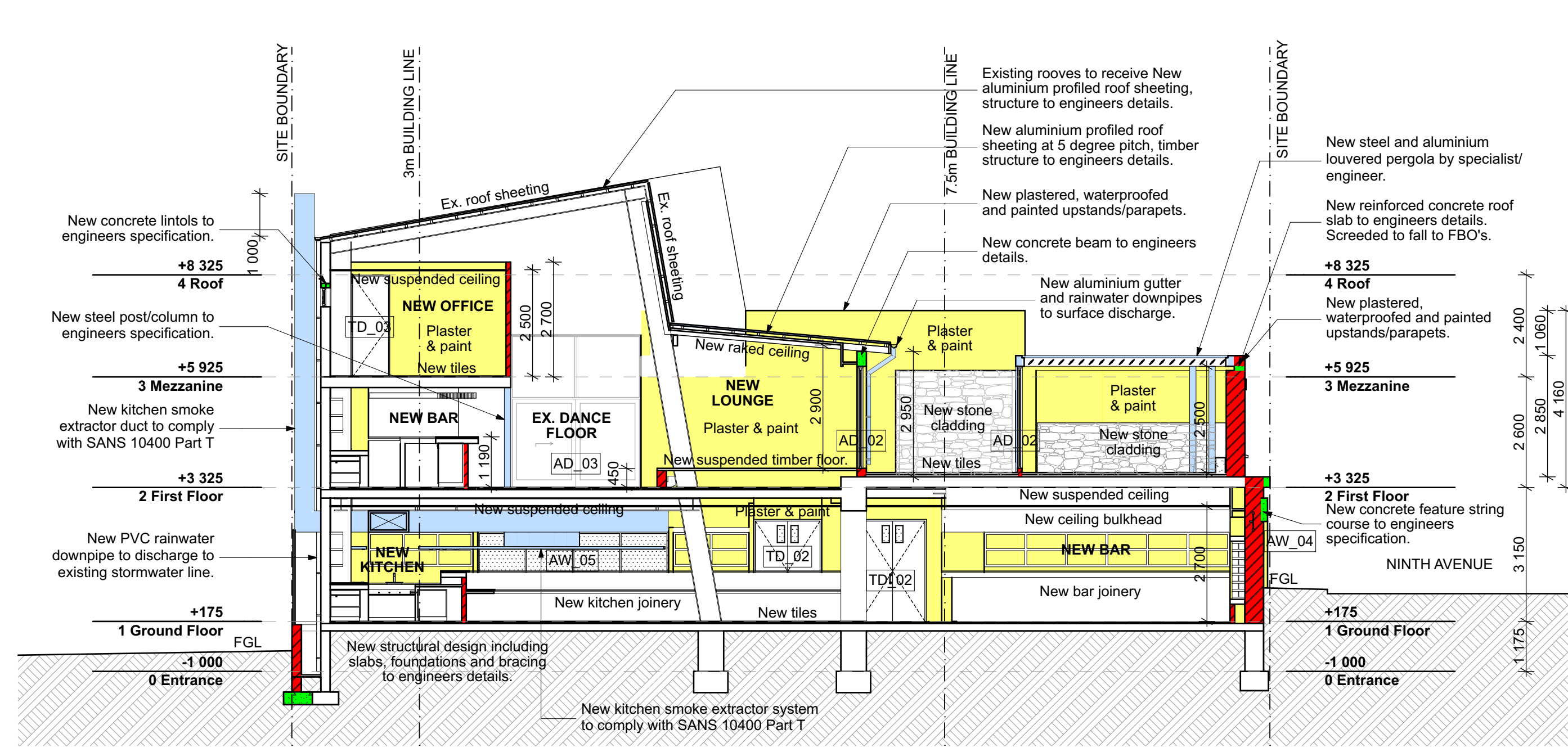
Building Section S-1
1:100

S-1



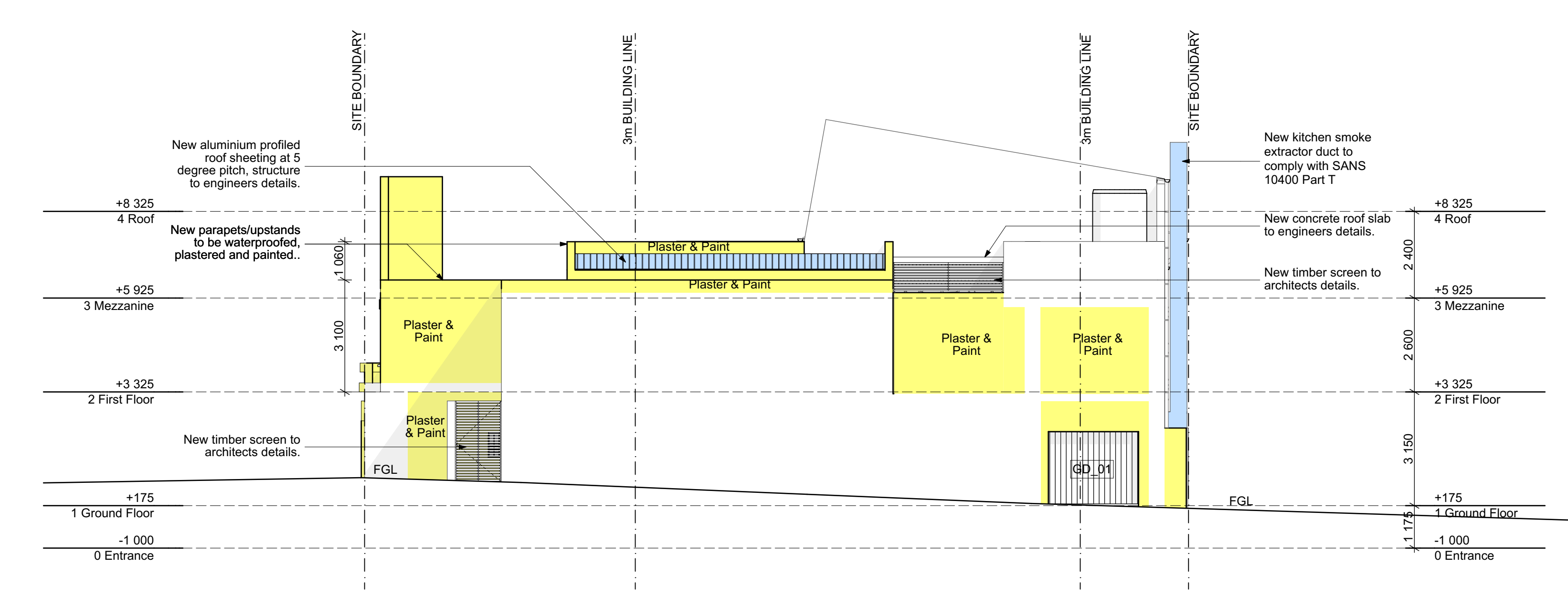
North West Elevation
1:100

E02



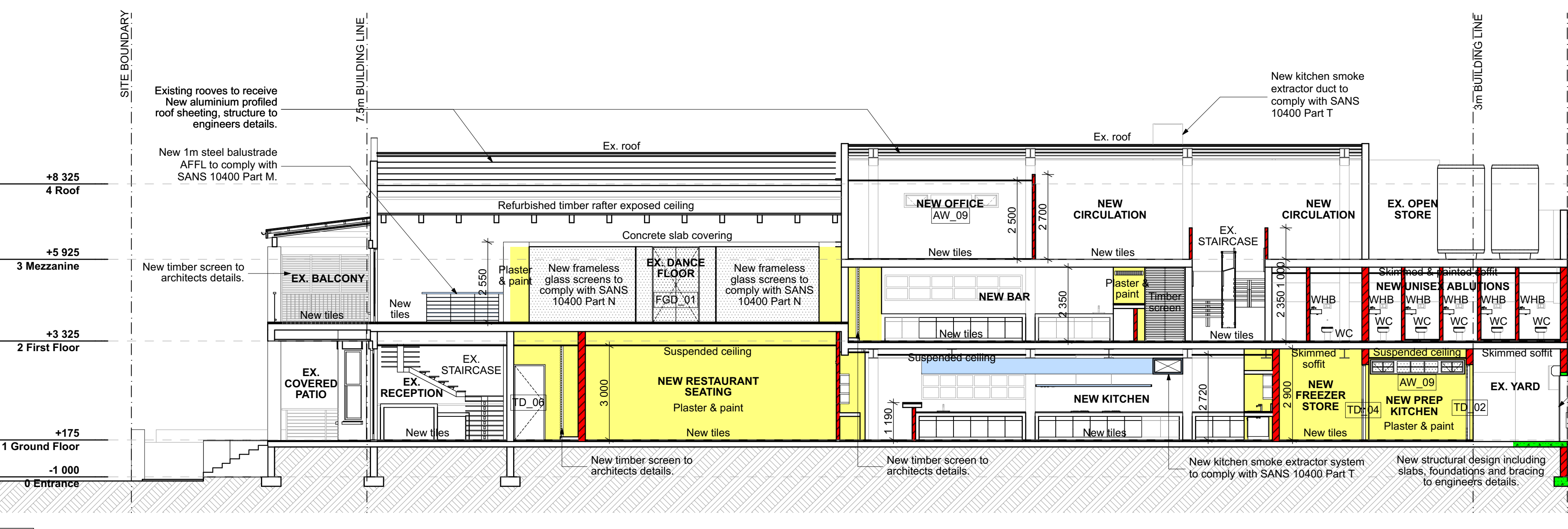
Building Section S-2
1:100

S-2



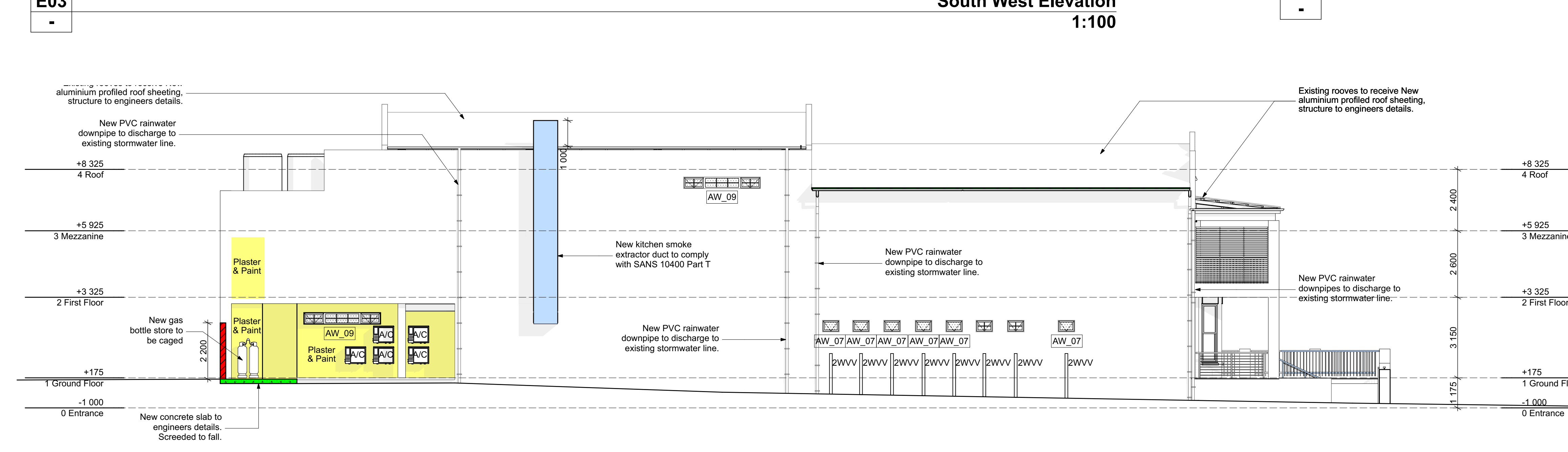
South West Elevation
1:100

E03



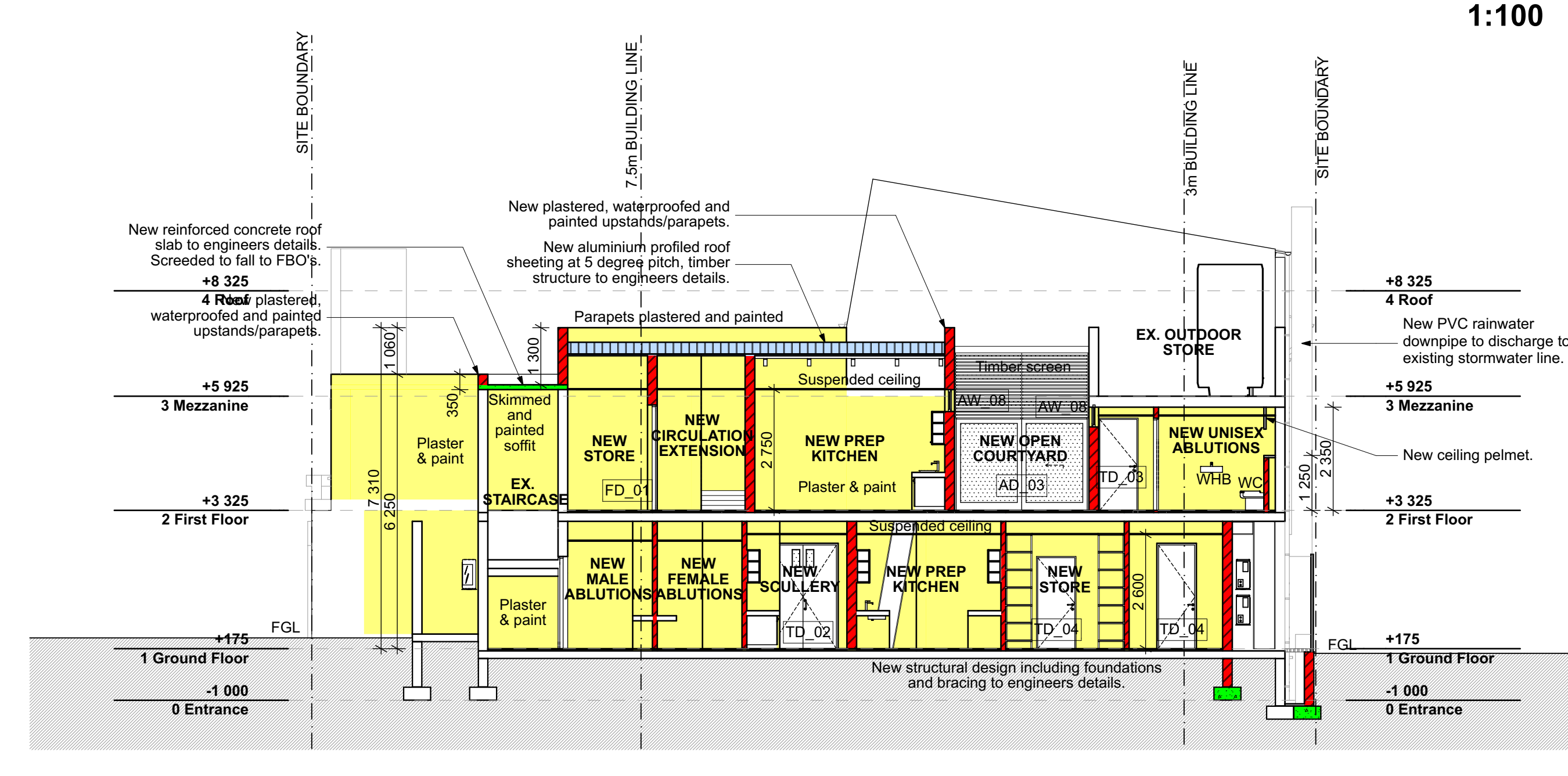
Building Section S-3
1:100

S-2



South East Elevation
1:100

E04



Building Section S-4
1:100

S-4

COPYRIGHT	
THIS DRAWING IS SUBJECT TO COPYRIGHT AND MAY NOT BE REPRODUCED IN WHOLE OR PART OR IN ANY MANNER WITHOUT THE WRITTEN PERMISSION FROM THE ARCHITECT	
LEVELS AND HEIGHTS SHOWN	
ALL FLOOR LEVELS ARE FFL AS INDICATED	
UNFINISHED CONCRETE LEVELS RELATIVE TO DATUM TO ALLOW ON SITE LEVELS TO BE ACCURATE TO CONSTRUCTION	
GENERAL NOTES	
ALL CONSTRUCTION NOTES TO BE ACCORDANCE WITH ATTACHED SPECIFICATIONS	
SANS 10400-A:2010 Edition 3	
Part A: General principles and requirements.	
Part B: Structural design.	
Part C: Fire safety.	
Part D: Site operations.	
Part E: Foundations.	
Part F: Walls.	
Part G: Roofs.	
Part H: Stairways.	
Part I: Lighting and ventilation.	
Part J: Drainage.	
Part K: Non-load-bearing masonry of sanitary disposal.	
Part L: Stormwater disposal.	
Part M: Facilities for persons with disabilities.	
Part N: Fire protection.	
Part O: Space heating.	
Part P: Fire installation.	
SABS SYMBOLS LIST	
Access opening	AO
Air Brick	AB
Architectural unit	AC
Bath	B
Bell	BT
Balustrade	BA
Cast iron	CI
Cleaning eye	CE
Concrete	CC
Cover level	COP
Cover level	CL
D	D
Dish washer	DW
extractor over	ED
Fire cement	FC
Full bore outlet	FBO
Galvanized mild steel	GMS
Ground level	GL
Gully	G
Inspection chamber	IC
Inspection eye	IE
Inset door	ID
Mesh-reinforced fibre	MF
Reinforced concrete	RC
Roofing eye	RE
Shower	SH
Sink	S
Step taper	ST
Soil pipe	SP
Stainless steel	SS
Storm water channel	SWC
Storm water	SW
Two way vent valve	2WVV
Unreinforced polypropylene	UP
Unit	U
Vent or venting pipe	VP
Wash-basin	WB
Wash-trough	WT
Wipe pipe	WP
Washing machine	WM
Tub pan	TP
Water to toilet	WT
turbine dryer	TD
Chimney pipe	CP
Weep Pipe	WEP

AUTHORITY STAMPS

SIGNATURES

ARCHITECT

CLIENT

ENGINEER



REV	DATE	DESCRIPTION	REVISIONS



Stefano Vatteroni Architects
6 JACK LESTER PI, AUSTIN, TEXAS, USA 78702
ARCHITECT

SOUTH AFRICA
SUITE 404 RICHIE PARK
GARDENS, UMBUNGU, PHA+ 27 083623207
DURBAN
KZN 4001
stefanovatteroni@zuma.com
HQ 083623207 SACAP NO. 7188

WAKAR
P.O. BOX 1001 LINDHELD
HQ 0836 1022118 M.A. Reg. 746

Client Information
Name: ZUMA Architects
Contact No: 0836 1022118
Email: stefano@zuma.com

Job Title: PROPOSED REFURBISHMENT WITH ADDITIONS & ALTERATIONS

ZHUMA RESTAURANT
153 FLORIDA ROAD, DURBAN
ERF 910

Drawing Name: ELEVATIONS & SECTIONS

Drawn on Apple Mac computer using ArchiCAD 23 by NKUCBERGO NOLELA 2023/04/28
Checked by STEFANO VATTERONI 2023/04/28

Drawing Scale: 1:100 / 1:200 /

Building Occupancy: A1

Layout ID: CS.301 Page Size: Revision: A1