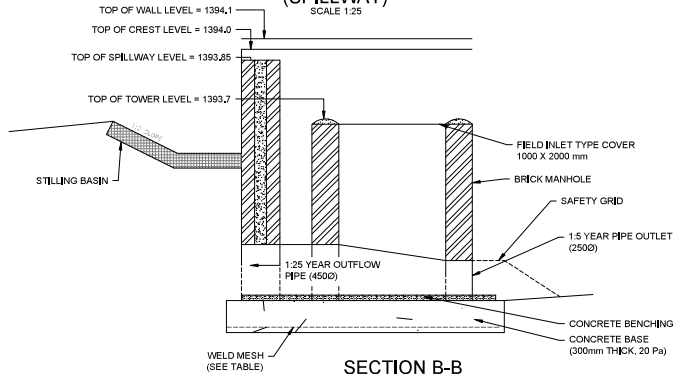
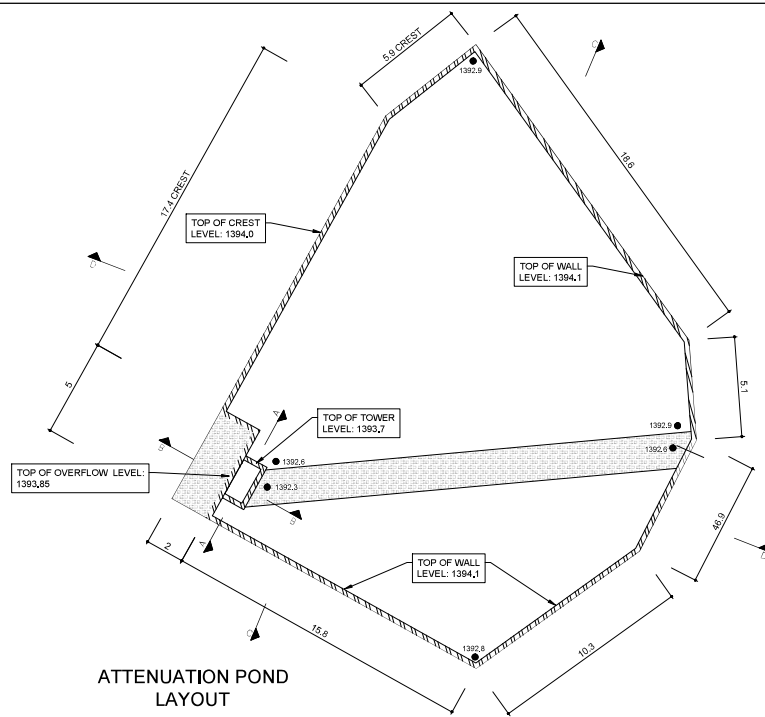


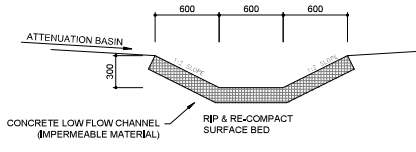
**SECTION A-A (SPILLWAY)**  
SCALE 1:25



**SECTION B-B (SPILLWAY)**  
SCALE 1:25



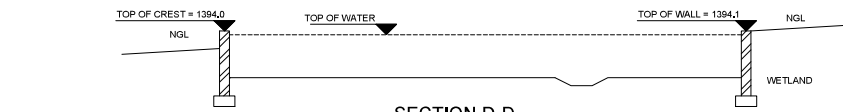
**ATTENUATION POND LAYOUT**



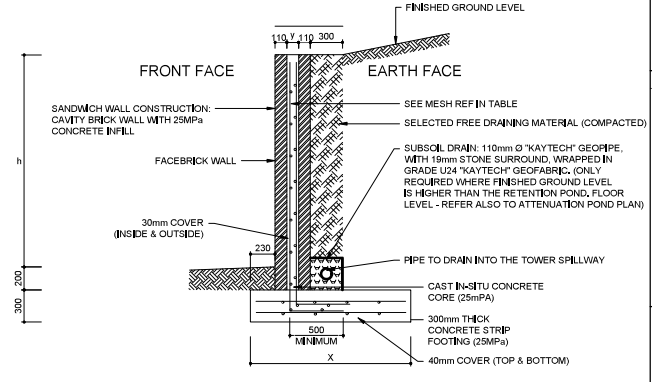
**LOW FLOW CHANNEL**  
NTS



**SECTION C-C (ATTENUATION BASIN)**  
NTS



**SECTION D-D (ATTENUATION BASIN)**  
NTS



**RETAINING WALL DETAIL (RETAINING SOIL)**  
SCALE 1:25

h	x	y	BASE REINF. TOP	BASE REINF. BOTTOM	STARTER BARS EARTH FACE	STARTER BARS FRONT FACE	WALL REINF. EARTH FACE	WALL REINF. FRONT FACE
1.0	800	110	Y10/300 BOTH WAYS	Y10/300	MESH 245	-	MESH 245	-
1.5	900	110	Y10/300 BOTH WAYS	Y10/300	Y10/200	-	MESH 395	-
2.0	1200	150	Y10/300 BOTH WAYS	Y10/300	Y10/200	-	MESH 617	-
2.5	1500	200	Y10/300 BOTH WAYS	Y10/200	Y12/200	Y10/200	MESH 617	MESH 395
3.0	1800	250	Y10/300 BOTH WAYS	Y10/200	Y12/200	Y10/200	MESH 617	MESH 617

APPROVED

TOWN ENGINEER: TRIPLE THREE ENGINEERING

BM	Y	X	Z
ST1	-99830,088	2877188,462	1397,378
BM1	-99857,008	2877160,067	1395,652
BM2	-99916,531	2877113,549	1392,786

GENERAL NOTES

- THE CONTRACTOR IS TO CONFIRM ALL DIMENSIONS ON SITE AND TO REPORT ANY DISCREPANCIES TO THE ENGINEER IMMEDIATELY.
- ALL WORK IS TO BE EXECUTED IN ACCORDANCE WITH THE PROVISIONS OF SANS 1200.
- NOTE THAT NO OTHER BURIED SERVICES ARE INDICATED ON THIS DRG.
- DIMENSIONS ARE NOT TO BE SCALED FROM THE DRAWINGS.
- THIS DRAWING IS NOT TO BE USED FOR CONSTRUCTION UNLESS SPECIFICALLY DIRECTED OR INDICATED.
- THE CONTRACTOR IS REQUIRED TO MINIMIZE DUST AND NOISE NUISANCE TO ALL SURROUNDING PROPERTIES.
- A MINIMUM NOTICE PERIOD OF 24 HOURS IS REQUIRED FOR ANY INSPECTION.
- CONTRACTOR IS TO PROVIDE A DETAILED SCHEDULE OF INFORMATION REQUIRED INDICATING ALL SUCH DATES.

LEGEND

REVISIONS

NO.	DRAWN	DATE	REVISION
A	RA	2021-04-16	FOR APPROVAL

CLIENT INFORMATION

CONSULTING ENGINEERS

Western Cape Office: Block 13, Pion Village Office Estate, 5th Ave, Paarl, 7666 / P.O. Box 227, Val de Vie Estate, Paarl, 7646/Gauteng Office: Unit 5, First Floor, Amersia Office Estate, 1st Bakers & Laurens Road, Bunting, Rossdene 7 P.O. Box 227, Val de Vie Estate, Paarl, 7666 / Tel: +27 (0) 10 745 5333/Fax: +27 (0) 10 733 1081/Email: info@triple3.co.za/Web: www.triple3.co.za

**TRIPLE 3**  
Group - Since 1999  
ENGINEERING (Pty) Ltd

PROJECT: RESIDENTIAL DEVELOPMENT KENGIES EXT 35

DESCRIPTION: STORMWATER ATTENUATION POND DETAIL

DESIGNED	GLR	SCALE	SHOWN	A1
PR TECH (ENG)	200070106	200070106	2021-04-15	

APPROVED GLR 200070106 CONTRACT NO 355

DRAWING NO. 355-03-10 SHEET 1 OF 1

PROJECT STATUS

REVISION