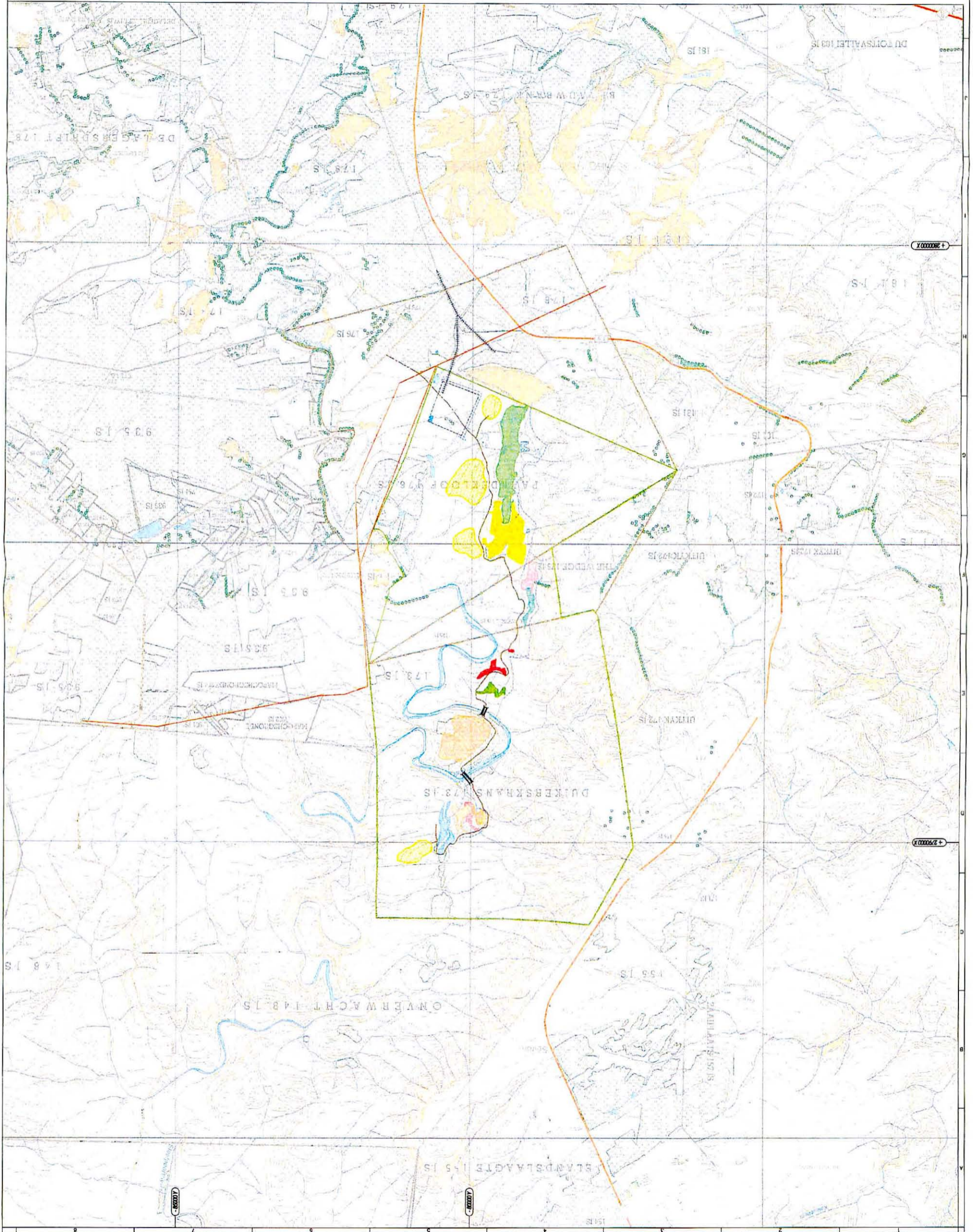


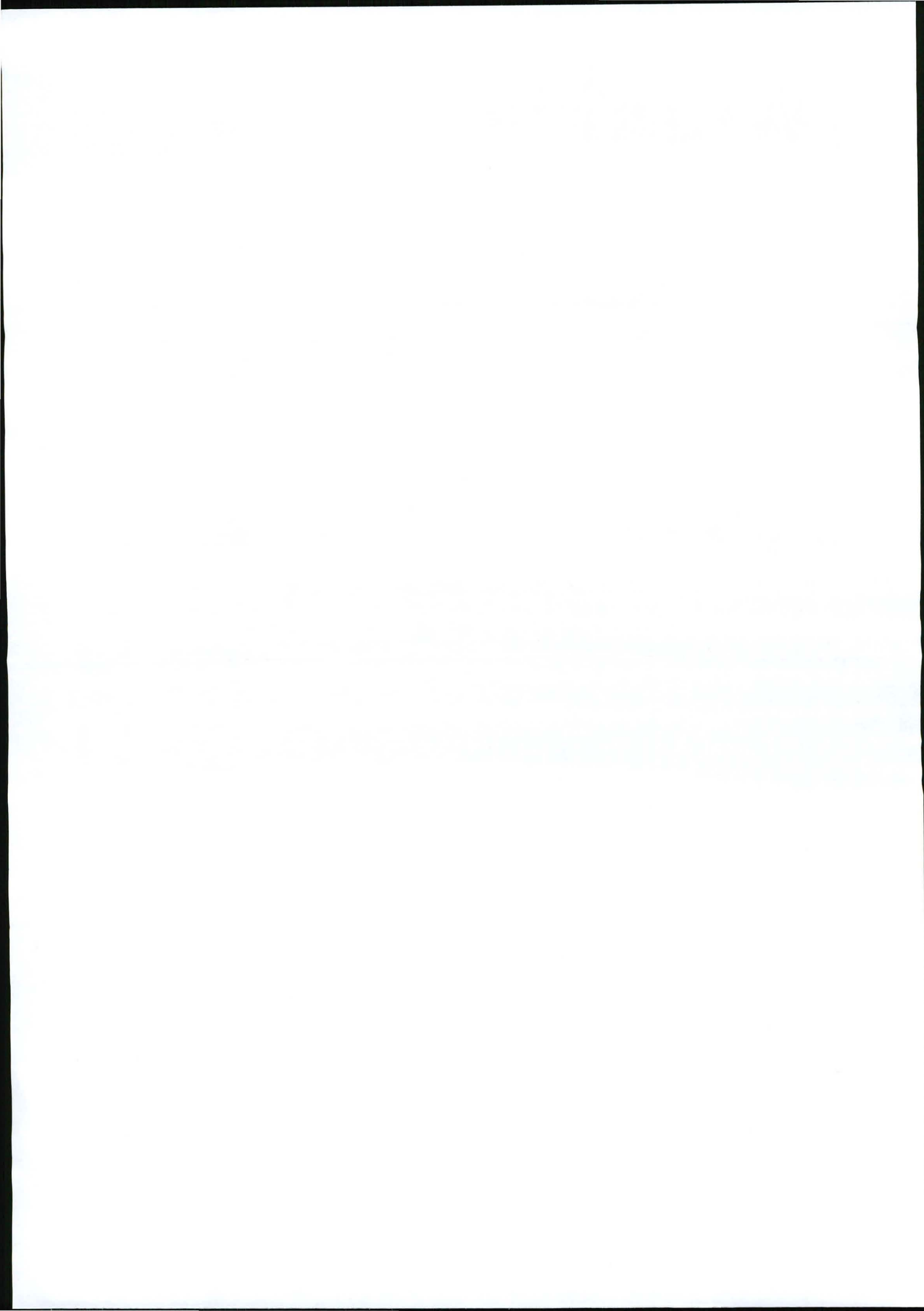
1:20,000 Scale

KEY PLAN

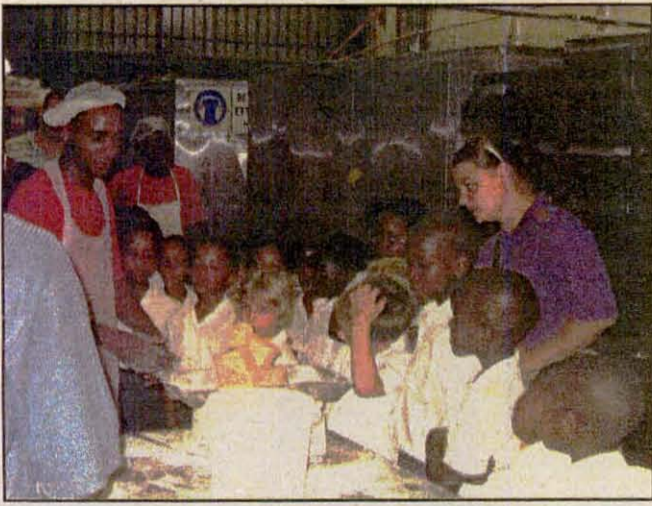


VEREMO MINERALS LTD



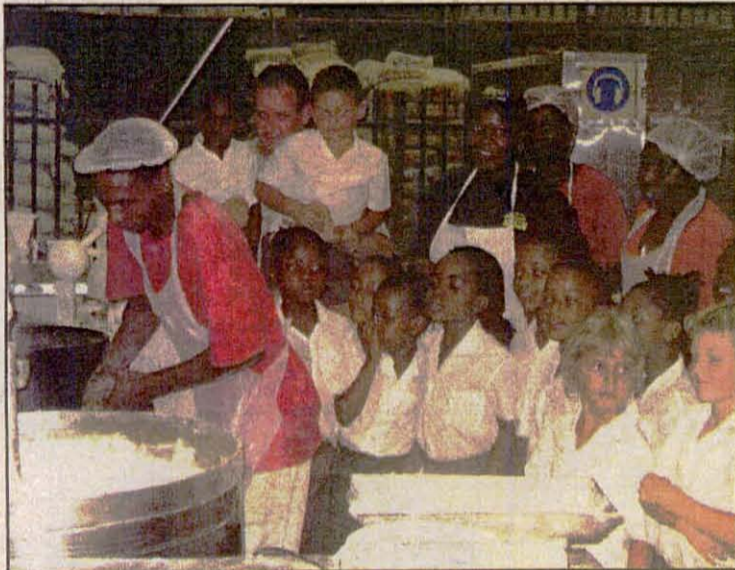
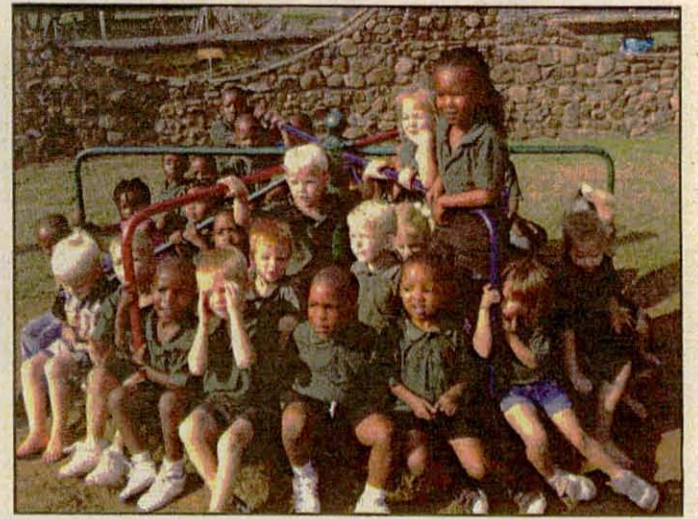


Joshua Generation students on field trips



Joshua Generation send their students on Field Trips during the first term. The Gr.00 students visited Winterveld Club in Steelpoort for a Sensory and Tasting experience. The Gr.1 students visited the Post Office in Steelpoort and the Gr.1 students visited Power Bake in Burgersfort. "On behalf of the staff and students we would like to thank the above businesses for the special way in which they treated us, they really made our staff and children feel welcome" said Ms Leigh van der Walt.

(Photographs: Joshua Generation)



Left: Students at Power Bake in Burgersfort.

Top left: The grade 00 students at Winterveld Club. They had a sensory and tasting tour at the Club.

Right: The grade 1 students visited the Post Office in Steelpoort.



Kennisgewings/Notices

TSEBIŠO KA GA TOKELO YA GO BA LE MOEPO (MRA), YA TSHEPEDIŠO YA TEKOLO YA SEABE GO TIKOLOGO (EIA), YA KGOPELO YA LAESENTSHE YA TAOLO YA DITLAKALA (WMLA) LE KGOPELO YA LAESENTSHE YA TŠHOMIŠO YE E KOPANTŠWEGO YA MEETSE (IWULA) TŠA GO HLONGWA GA MOEPO WO O ŠIŠINTŠWEGO WA VEREMO MAGNETITE NEAR ROOSSENEKAL, KA PHROBENTSHENG YA LIMPOPO.

Le tsebišwa gore Veremo Minerals (Pty) Ltd e dira *di tshapedišo tša tumelelo tše di fafapanego tša moepo wa nkoti wo o bulegilego wo o šišintšwego wa maknethaete*. Moepo wo o šišintšwego o tla bewa dikarolong tše di latelago tša naga tše di pedi (12) ka bodikela tše di ka bano tše lesomphela (16) ka leboa la Starolong tše di dikhilometara tše lesompedi (12) ka bodikela tše di ka Roosenekal, ka Phrobentsheng ya Limpopo.

- Karolo ya karolo ya 2 ya polasa ya Paardekloof 176 JS,
- Digoro bjo bo šetšega bja go polasa ya Duikerskrans 173 JS,
- Dikarolo tša 1, 2, 3, 4, 5 tša polasa ya Duikerskrans 173 JS.

Ke maikemišetšo a Veremo go rafa borale bjo bo gogotšwego bja go huma ka maknethaete bjo bo epšwago gabonolo mo lebakeng la mengwaga ye 30. Tumelelo ya e a nyakega mo mošomong wa moepo wo o šišintšwego go latela melao ye e latelago:

- Karolo ya 22 le ya 39(1) tša Molao wa Tihabollo ya Methopo (ya Diminerale le Phethroliamo (MPRDA) (Molao wa 28 wa 2002), ka ge o fetošitšwe (MPRDA) (Kgopelo ya Tokelo ya Moepo go Kgoro ya Methopo ya Diminerale (DMR));
- Karolo ya 24(2) le ya 24(D) tša Molao wa Taolo ya Tikologo wa Bosetšhaba, wa 1998 (Molao wa 107 wa 1998) (NEMA) ka ge o badilwe le Tsebišo ya Mmušo ya Hugo & Willemse 143, Roosenekal. O amogetšwe go tšena Kopano ya Setšhaba ya Mang le Mang, ka nako efe goba efe gareng ga 11h00 le 18h00. Go hwetša tshedimošo ka botlalo le/goba go romela ditshwaotshwao ka ga protšeke ye, le kgopelwa go ikgokaganya le Robert Kruger/Cherie Matebesi go The MSA Group, P.O. Box 81356, Parkhurst, 2120. Mogala: (011) 880 4209 Fekese: (011) 880 2184 goba Emelle: robertk@msagroupservices.com/cheriem@msagroupservices.com ka la goba pele ga Labobedi la 12 Mei 2011.
- Karolo ya 19(1) le ya 20(b) tša Molao wa Taolo ya Ditlakala tša Tikologo wa Bosetšhaba (Molao wa 59 wa 2008), (NEMWA) ka ge o badilwe le Tsebišo ya Mmušo ya Nomoro ya 718 Legoro la B (Kgopelo ya Laesentshe ya Taolo ya Ditlakala go Kgoro ya Merero ya Tikologo ya Bosetšhaba (DEA)); le
- Karolo ya 21 ya Molao wa Meetse wa Bosetšhaba (Molao wa 36 wa 1998) (NWA) (Kgopelo ya Laesentshe ya Tšhomišo ye e Kopantšwego ya Meetse (IWUL) go Kgoro ya Merero ya Meetse (DWA)).

Ka kgopelo o tsebišwa gore *Pego ye e Thadilwego ya Seabe go Tikologo le Lenaneo la Taolo ya Tikologo* di ngwadilwe ka go Karolo ya 49 ya Molao wa Tihabollo ya Methopo ya Diminerale le Phethroliamo (MPRDA) gomme di a hwetšagalaga gore batho ba dire ditshwaotshwao. Dikhopi tša dingwalwa tše di a hwetšagalaga mafelong a latelago go lekgodišwa:

- Bokgobapukung bja setšhaba bja Roosenekal go thoma ka 7h30 go filha ka 16h15 Matšatšing a gare ga beke (go sa akaretšwe Matšatši a Maikhutšo a Setšhaba) ka 143 Hugo Street, Roosenekal (Motho yo le ka ikgokaganyago le yena: Rachel Malatjie (013) 273-0056)
- Steelpoort Akademie go thoma ka 8h00 go filha ka 13h30 Matšatšing a gare ga beke (go sa akaretšwe Matšatši a Maikhutšo a Setšhaba) ka Polaseng ya Gold mine, Polokwane Road, Steelpoort, 1133 (Motho yo le ka ikgokaganyago le yena: Christelle van der Merwe (013) 230-9341/2)

Go hwetša tshedimošo ka botlalo le/goba go romela ditshwaotshwao ka ga protšeke ye, le kgopelwa go ikgokaganya le Robert Kruger/Cherie Matebesi go The MSA Group, P.O. Box 81356, Parkhurst, 2120. Mogala: (011) 880 4209 Fekese: (011) 880 2184 goba Emelle: robertk@msagroupservices.com/cheriem@msagroupservices.com ka la goba pele ga Labobedi la 12 Mei 2011.

Tsebišo ka ga Kopano ya Setšhaba ya Mang le Mang:

Re laletša batho ka moka bao ba nago le kgahlago le/goba bao ba Amegago go tšena Kopano ya Setšhaba ya Mang le Mang, go hlagaša le go ahlaha protšeke ye e šišintšwego ka Labo, Roosenekal. O amogetšwe go tšena Kopano ya Setšhaba ya Mang le Mang, ka nako efe goba efe gareng ga 11h00 le 18h00. Go hwetša tshedimošo ka botlalo, ka kgopelo o se ke dikadika go ikgokaganya le kantoro wa renamo, mo dinomorong tša boikgokaganyo tše di filwego ka godimo.

NOTICE OF MINING RIGHT APPLICATION (MRA), ENVIRONMENTAL IMPACT ASSESSMENT PROCESS (EIA), WASTE MANAGEMENT LICENSE APPLICATION (WMLA) AND INTEGRATED WATER USE LICENSE APPLICATION (IWULA) FOR THE PROPOSED ESTABLISHMENT OF THE VEREMO MAGNETITE MINE NEAR ROOSSENEKAL, LIMPOPO PROVINCE.

INVITATION TO PARTICIPATE

Notice is hereby given that Veremo Minerals (Pty) Ltd is undertaking various authorisation processes for the proposed establishment of an open pit magnetite mine. The proposed mine will be located on the following portions of land located approximately sixteen (16) kilometres north of Stoffberg and twelve (12) kilometres west of Roosenekal, Limpopo Province

- The remaining extent of the farm Paardekloof 176 JS, and
- Portions 1, 2, 3, 4, 5 of the farm Duikerskrans 173 JS.

It is Veremo's intention to mine the weathered, free-dig magnetite-rich ore for a period of approximately 30 years. Authorisation is required for this proposed mining in terms of the following legislation:

- Section 22 and 39(1) of the Mineral and Petroleum Resources Development Act (Act 28 of 2002), as amended (MPRDA) (Application for a Mining Right from the Department of Mineral Resources (DMR));
- Section 24(2) and 24(D) of the National Environmental Management Act, 1998 (Act 107 of 1998) (NEMA) as read with Government Notice R543 (Regulation 26 to 34) and R545 of the Environmental Impact Assessment Regulations, 2010 (Application for Environmental Authorisation from the Limpopo Department of Economic Development, Environment and Tourism (LEDET));
- Section 19(1) and 20(b) of the National Environmental Management: Waste Act (Act 59 of 2008), (NEMWA) as read with the Government Notice No. 718 Category B (Application for a Waste Management License from the National Department of Environmental Affairs (DEA)); and
- Section 21 of the National Water Act (Act 36 of 1998) (NWA) (Application for an Integrated Water Use License (IWUL) from the Department of Water Affairs (DWA)).

Please be advised that the Draft Environmental Impact Assessment Report and Environmental Management Programme have been compiled in terms of Section 49 of the MPRDA and are available for comment. Copies of the documents are available at the following venues for review:

- Roosenekal Public Library from 7h30 to 16h15 Weekdays (excluding Public Holidays) at 143 Hugo Street, Roosenekal (Contact Person: Rachel Malatjie (013) 273-0056)
- Steelpoort Akademie from 8h00 to 13h30 Weekdays (excluding Public Holidays) at Farm Gold mine, Polokwane Road, Steelpoort, 1133 (Contact Person: Christelle van der Merwe (013) 230-9341/2)

For more information and/or to submit comments on the project, please contact Robert Kruger/Cherie Matebesi at The MSA Group, P.O. Box 81356, Parkhurst, 2120. Tel: (011) 880 4209 Fax: (011) 880 2184 or E-mail: robertk@msagroupservices.com/cheriem@msagroupservices.com on or before Tuesday 12 May 2011.

Notice of Public Open House:

We are inviting all interested and/or Affected Parties to attend a Public Open House, to present and discuss the proposed project, on Thursday, 5 May 2011, at the Roosenekal Public Hall (c/o Hugo & Willemse Street 143, Roosenekal). You are welcome to attend the Open House, anytime between 11h00 and 18h00. For more information, please do not hesitate to contact our office, on the contact details provided above.

To advertise in Platinum Gazette contact Beánnla Celliers on 083 543 1676. Advertising deadline: Tuesdays at 17:00

