

**CLOSURE PLAN IN SUPPORT OF THE ENVIRONMENTAL AUTHORISATION FOR THE PROPOSED PROSPECTING RIGHT APPLICATION FOR COAL ON PORTION 23 OF THE FARM STERKFORTEIN 299 IS UNDER GOVAN MBEKI LOCAL MUNICIPALITY, MPUMALANGA PROVINCE.**

**PROJECT REFERENCE: MP 30/5/1/1/2/15365PR**

**PROPONENT: THIKHO RESOURCES (K2017367277 (SOUTH AFRICA) PTY LTD**



**NOVEMBER 2018**

# Table of Contents

<b>LIST OF ABBREVIATIONS .....</b>	<b>4</b>
<b>APPLICANTS DETAILS .....</b>	<b>5</b>
<b>EAP DETAILS .....</b>	<b>5</b>
<b>EXPERTISE OF EAP .....</b>	<b>5</b>
<b>1. INTRODUCTION .....</b>	<b>8</b>
1.1 Closure Objectives .....	11
<b>2 REGULATORY REQUIREMENTS .....</b>	<b>11</b>
<b>3 DESCRIPTION OF THE RECEIVING ENVIRONMENT .....</b>	<b>14</b>
3.1 Geology.....	14
3.2 Climate .....	16
3.3 Topography .....	17
3.4 Soils & Land Capability .....	18
3.5 Natural vegetation.....	18
3.6 Fauna.....	19
3.7 Surface water .....	20
3.8 Groundwater.....	20
3.9 Regional socio-economic structure.....	21
3.9.1 Population and Profile Size .....	21
3.9.2 Households and Services.....	22
3.9.3 Major economic activities and sources of employment .....	22
<b>4 CLOSURE VISION, OBJECTIVES AND TARGETS .....</b>	<b>23</b>
<b>5 ALTERNATIVES CONSIDERED .....</b>	<b>24</b>
5.1 Preferred Alternative: Rehabilitation/ Backfill of boreholes.....	24
<b>6 CLOSURE ASSUMPTIONS.....</b>	<b>25</b>
<b>7. FINAL LAND USE .....</b>	<b>25</b>
<b>8. CLOSURE AND REHABILITATION ACTIVITIES .....</b>	<b>26</b>
8.1 Infrastructure.....	26
8.2 Boreholes .....	26
8.3 Roads and parking areas .....	27
8.4 Remediation of Contaminated Areas .....	27

8.5	Vegetation .....	27
8.6	Waste Management .....	28
9.	ENVIRONMENTAL RISK ASSESSMENT.....	28
10.	CLOSURE COST ESTIMATION .....	34
11.	MONITORING AND AUDITING .....	36
12.	CONCLUSIONS .....	37

### List of Tables

Table 1	legislation and its Implications to the Closure Plan .....	12
Table 2	Economic Drivers .....	23
Table 3	Significance rating .....	29
Table 4	Methodology.....	30
Table 5	Outcome of Risk Assessment .....	31
Table 6	Closure Quantum .....	35

### List of Figures

Figure 1	Locality map.....	10
Figure 2	Geology of the Site.....	15
Figure 3	Climate Graph, Weather by Month in Bethal .....	16
Figure 4	Temperatures per Month in Bethal .....	17
Figure 5	Vegetation Map.....	19
Figure 6	Surface Water on site.....	20

## LIST OF ABBREVIATIONS

<b>BAR</b>	Basic Assessment Report
<b>DMR</b>	Department of Mineral Resources
<b>DWS</b>	Department of Water and Sanitation
<b>EIA</b>	Environmental Impact Assessment
<b>EMPr</b>	Environmental Management Programme Report
<b>EMS</b>	Environmental Management System
<b>IWULA</b>	Integrated Water Use Licence Application
<b>NEMA</b>	National Environmental Management Act (Act 107 of 1998)
<b>SANAS</b>	South African National Accreditation System
<b>SCC</b>	Species of Special Concern

**APPLICANTS DETAILS**

NAME OF APPLICANT	Thikho Resources (K2017367277 (SOUTH AFRICA) PTY LTD
TELEPHONE	+27(0) 11 783 7993
FAX MAIL NUMBER	+27(0) 11 594 9159
POSTAL ADDRESS	P O Box 230 Pinegowrie,2123
PHYSICAL ADDRESS	7 <sup>th</sup> Floor, Fredman Towers, 13 Fredman Drive, Sandton 2196
E-MAIL ADDRESS	<a href="mailto:sn@sitatunga.com">sn@sitatunga.com</a>
FILE REFERENCE NUMBER SAMRAD	MP 30/5/1/1/2/15365PR

**EAP DETAILS**

Name of EAP	Niketiwe Dlamini
Telephone	+27(0)11 783 7993/ 076 727 4968
Fax to email	+27(0) 11 594 9159
Email Address	<a href="mailto:nd@sitatunga.com">nd@sitatunga.com</a>
<b>EXTERNAL REVIEWER DETAILS</b>	
Name	Ruan Mostert
Telephone	072 774 7831
Address	Private Bag X37, Postnet Suite 594, Lynnwood Ridge, 0040
Email Address	<a href="mailto:ruan@ecolead.co.za">ruan@ecolead.co.za</a>

**EXPERTISE OF EAP**

Name	Details
Niketiwe Dlamini	<p>Niketiwe Dlamini holds a Master's of Science Degree in Environment and Society as well as an Honours Degree in Environmental Analysis and Management from the University of Pretoria. For her undergraduate studies, she completed a diploma in Environmental Health Sciences as well as a BSc degree in the same field majoring in Environmental Management at the University of Swaziland; she has also been trained as an Environmental Management Inspector at the University of Pretoria and therefore has a vast understanding of South African Environmental Legislation and monitoring compliance.</p> <p>As an Environmental Assessment Practitioner Niketiwe has been involved in several EIA projects including; GIZA Minerals, Mining Right, Dlamini Trust, Prospecting Right Applications, Taung Prospecting Right Application, City of Tshwane Food and Energy Centre, Welkom 5MW Solar power plant, Springs Pyrolysis Plant, Sandown Castle S24G, Olievenhoutbosch and Garankuwa Mixed Scheme Development project, Leandra Landfill site to name but a few projects. She has 5 years of working experience and is also an experienced Environmental Auditor, with the following competencies:</p> <ul style="list-style-type: none"> <li>• Compliance Monitoring</li> <li>• Occupational Health and Safety Risk Assessments</li> <li>• Environmental, Health and Safety Auditing.</li> </ul>

Name	Details
<p>Lauren Weller (Reviewer)</p>	<p><u>Summary of Qualifications:</u></p> <ul style="list-style-type: none"> <li>• BSc in Ecology, Environment and Conservation (With Distinction)</li> <li>• BSc Honours in Ecology, Environment and Conservation (With Distinction)</li> <li>• Post-graduate certificate in Environmental Law;</li> <li>• Certificate 1: Environmental and Sustainability Law; and</li> <li>• Certificate 2: Land and Water Law.</li> </ul> <p><u>Summary of Experience:</u></p> <p>Lauren has 6 years' experience in Mining, Prospecting and Environmental Management. Lauren's experience includes the founding and management of a small environmental advisory company, leadership at the Executive Committee level for a JSE listed mining corporate operating in twelve countries across Africa, technical and project management of exploration programmes, stakeholder management, GIS mapping and analysis, environmental management and sustainability reporting. In addition, she has comprehensive knowledge and experience with mining and environmental legislation applicable in the International, South African and the African context, as well as of the ISO 9001, 14001 and OHSAS 18001 standards.</p> <p>Projects she has been involved in include:</p> <ul style="list-style-type: none"> <li>• Tweefontein Optimisation Project</li> <li>• Blackhill Siding IWULA</li> <li>• Flexilube EIA</li> <li>• Leeuwsfontein IWULA</li> <li>• Nkomati Anthracite (IWULA, Section 24G, EIA and EMPr)</li> <li>• Sentula Coal Portfolio environmental, mining and prospecting applications for Bankfontein Project, Goodvetroud Project and Schoongezicht Projects in South Africa, Mulungwa Project (Zambia), Tete Project (Mozambique).</li> <li>• Strategic legal advisory and consulting on specific challenges relating to water management at the Zonnnebloem Colliery.</li> <li>• Environmental Audits for the Sentula Coal Portfolio</li> <li>• Trollope Holdings (Pty) Ltd: Renewal application for a Mining Right.</li> <li>• Eyethu Coal including Burgh Group and Iyanga Mining (Environmental and Technical Management)</li> <li>• Minerano Resources - Minerano Gold Prospecting Application and BAR</li> <li>• Minerano Resources – Riviera Managense and Iron Ore Prospecting Application and BAR</li> <li>• Minerano Resources – Verwater Prospecting Application and BAR</li> <li>• Minerano Resources – Vaalbank Prospecting Application and BAR</li> <li>• Minerano Resources – Bitterfontein Project Prospecting Application and BAR</li> <li>• Minerano Resources – Rhenosterdrift Prospecting Application and BAR</li> <li>• Minerano Resources – Virginia Gold Projects Prospecting Application and BAR's</li> </ul>
<p>Ruan Mostert  External Reviewer</p>	<p><u>Summary of Qualifications</u></p> <ul style="list-style-type: none"> <li>• Masters in Environmental Management</li> <li>• BSc Honours in Conservation Ecology</li> </ul> <p><u>Summary of Experience:</u></p> <p>Ruan has participated in the completion of variety environmental projects throughout South Africa, including BAR's, EIAs and EMPr's for construction projects, mining houses, industrial developments as well as</p>

Name	Details
	<p>infrastructure and has more than 11 years' experience as an Environmental Assessment Practitioner. His experience also includes the completion of Section 24G applications, Environmental Management Plans, EMPR's for prospecting and mining right applications, environmental audit reports, acting as an Environmental Control Officer (ECO) compiling monthly environmental compliance audits for construction sites, implementing and maintaining ISO 14 001 Environmental Management Systems and acting as an external ISO 14001 auditor. Due to the wide variety of projects he has been involved in, he has gained experience in a wide range of environmental disciplines.</p>

DRAFT

## 1. INTRODUCTION

The proposed Sterkfontein prospecting project is located in the Mpumalanga Province. The project falls within the Govan Mbeki Local Municipality under the Gert Sibande District Municipality the Prospecting Right area is approximately 330.46 Ha and is located 12.64 km South West of Bethal, refer to **Figure 1**. Thikho Resources (K2017367277 (South Africa) (Pty) Ltd proposes to prospect for Coal, Pseudo coal and anthracite on Portion 23 of the Farm Sterkfontein 299 IS.

The prospecting activities will include the following activities:

- Literature survey- which will be a comprehensive review of published and unpublished work from secondary data sources. Time will be spent reviewing books, journals, government publications etc.
- Geological Mapping will be conducted such that accurate and meaningful structural and geological data may be derived from it and to communicate information gathered from the desktop study with mapping results.
- Borehole planning will involve drilling program design and implementation procedures to ensure that drilling is conducted as safe and economic as possible. This phase will include cooperation between the drilling contractor, services contractors, geologists and other technical specialists. The planning process will also ensure that the health and safety of all working on the drilling sites and the environment are protected.
- All core samples collected throughout drilling will be submitted to a SANAS-accredited laboratory for comprehensive analyses and metallurgical recovery tests aimed at determining coal quality. The coal samples will be analysed for moisture, ash, volatile matter, fixed carbon, calorific value and sulphur.
- Geophysical wireline logging: Down hole geophysics will be conducted on specific boreholes to allow for stratigraphic correlation, for core recovery calculations and to aid in the interpretation and sampling of the various coal seams. Wireline logging is performed by lowering a 'logging tool' on the end of a wireline into a borehole and recording physical properties using a variety of sensors.
- Geological 3D modelling: After the extent and development of the coal seams are investigated by drilling, the acquired data will be modelled using geological modelling software. Geological 3D modelling includes integration of diverse types of observations into 3D geo-models using geological mapping data, borehole data and interpretations and any other field data.

- Environmental management and rehabilitation: Environmental management will include the maintenance and improvement of the state of the environment to ensure that the ecosystem is protected and maintained for equitable use by future human generations, and also, maintain ecosystem integrity. Rehabilitation on the other hand includes returning the land to some degree of its former state after drilling.

These proposed prospecting activities requires an environmental authorization in terms of the National Environmental Management Act (Act No. 107 of 1998) (NEMA as amended) and will follow a Basic Assessment Process in terms of NEMA Regulations 982 (as amended). The NEMA Regulations Pertaining to the Financial Provision for Prospecting, Exploration, Mining or Production Operation (GNR 114) requires that a final rehabilitation, decommissioning and mine closure plan is developed which includes the determination of financial provision to guarantee the availability of sufficient funds to undertake rehabilitation and remediation of the adverse environmental impacts of mining.

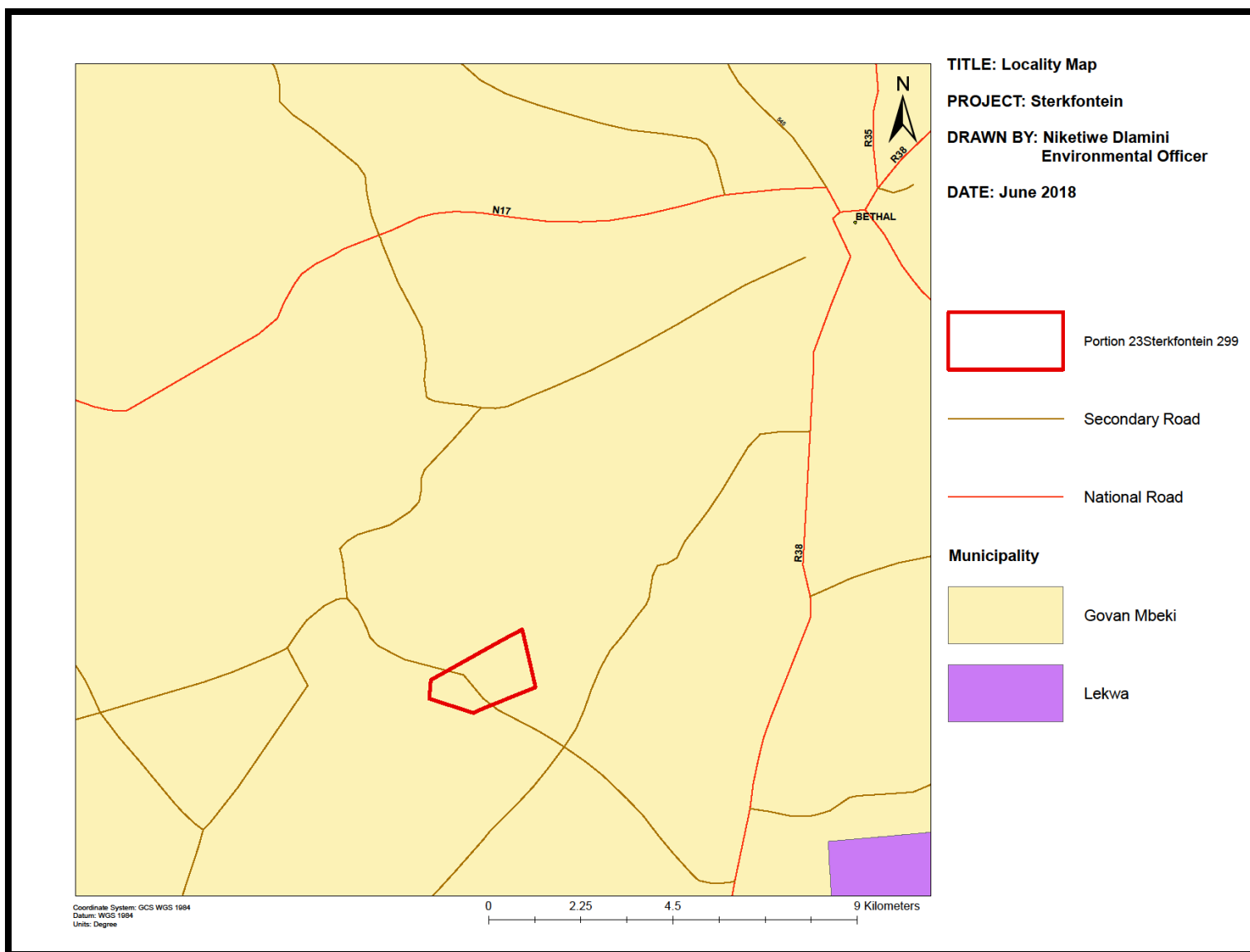


Figure 1 Locality map

## **1.1 Closure Objectives**

Prospecting activities are anticipated to last for over a period of three years. The objective of this document is to present the final rehabilitation, decommission and closure plan for the proposed project. This closure plan therefore covers the footprint area of the proposed activities associated with the prospecting activities.

This report provides a plan that is measurable and auditable for Thikho Resources (K2017367277 (South Africa) (Pty) Ltd and to the Department of Mineral Resources (DMR). A plan that takes into consideration the final land-use of the site, indicating what infrastructure and activities will ultimately be decommissioned, closed, removed and remediated and indicating monitoring, auditing and reporting requirements.

The objectives of the rehabilitation, decommissioning and closure plan are to:

- provide the vision, objectives, targets and criteria for final rehabilitation, decommissioning and closure of the project;
- explain the risk assessment approach and outcomes and link closure activities to risk rehabilitation;
- detail the closure actions that clearly indicate the measures that will be taken to mitigate and/or manage identified risks and describes the nature of residual risks that will need to be monitored and managed post closure;
- commit to a schedule, budget, roles and responsibilities for final rehabilitation, decommissioning and closure of each relevant activity or item of infrastructure;
- detailing the full closure costs for the life of project; and
- outlining monitoring, auditing and reporting requirements.

## **2 REGULATORY REQUIREMENTS**

There are a number of legal and regulatory frameworks with which Thikho Resources must comply with, the following are key legislation which could materially affect rehabilitation and closure:

Table 1 legislation and its Implications to the Closure Plan

LEGISLATION	IMPLICATIONS FOR CLOSURE
<b>The Constitution of the Republic of South Africa.</b> In terms of Section 24 of the Constitution “Everyone has the right to an environment that is not harmful to their health or well-being; and to have the environment protected, for the benefit of present and future generations.”	Constitutional requirement to ensure that the Plan includes measures that protect the rights of people to an environment that is not harmful to health or well-being post closure.
<b>National Environment Management Act (Act 107, 1998)</b> Sections 28 (1) and (3) of NEMA set out the duty of care principle, which is applicable to all types of pollution and must be taken into account in considering any aspects of potential environmental degradation. Every person who causes, has caused or may cause significant pollution or degradation of the environment must take reasonable measures to prevent such pollution or degradation from occurring, continuing or recurring, or, in so far as such harm to the environment is authorised by law or cannot reasonably be avoided or stopped, to minimise and rectify such pollution or degradation of the environment.	The measures required in terms of subsection (1) may include measures to - Investigate, assess and evaluate the impact on the environment; Inform and educate employees about the environmental risks of their work and the manner in which their tasks must be performed to avoid causing significant pollution or degradation of the environment; Cease, modify or control any act, activity or process causing the pollution or degradation; Contain or prevent the movement of pollutants or the causes of degradation; Eliminate any source of the pollution or degradation; or Remedy the effects of the pollution or degradation
<b>Environmental Impacts Assessment Regulations, 2014</b> These regulations were developed for the preparation, evaluation, submission, processing and consideration of, and decision on, applications for environmental authorisations.	Any new EIAs or BAs for mining activities will be required to consider closure during planning and to include a closure plan and closure estimate to support an authorisation application.
<b>National Environment Management: Waste Act (Act 59 of 2008)</b> Part 8 of Chapter 4 of the Act indicates the requirement to identify the status and risk of contaminated sites and provides a legal mechanism for remediation activities to be instigated and controlled.	Contamination resulting from operational activities will require remediation, with the final soil quality meeting requirements as specified in the Acts Regulations.
<b>NEMA Regulations pertaining to the Financial Provision for Prospecting, Exploration, Mining or Production Operations.</b> The purpose of these Regulations is to regulate and determine financial provision as contemplated in the Act for the costs associated with the undertaking of management, rehabilitation and remediation of environmental impacts from prospecting, exploration, mining or production operations through the lifespan of such operations and latent or residual environmental impacts that may become known in the future. The Regulations also include detailed descriptions of the wording required in the documentation to support the provisioning for liability using Bank Guarantees and Trust Funds. Finally, the legislation also provides detailed on the information to be contained in the following plans: Annual rehabilitation plan Final rehabilitation, decommissioning and mine closure plan Environmental risk assessment report Care and maintenance plan	Closure planning process will need to be expanded to include Annual rehabilitation plan, Final rehabilitation, decommissioning and mine closure plan, Environmental risk assessment report Care and maintenance plan.

<p><b>The National Environment Management: Air Quality Act, 2004.</b> This Act regulates atmospheric pollution. The Act came into full effect on 1 April 2010 and entrusts the Department of Environmental Affairs with the task of preventing pollution and ecological degradation, while at the same time promoting justifiable economic and social development. Metropolitan and District Municipalities are charged with issuing atmospheric emission licenses for certain listed activities. It must be shown that the best practical means are being employed to limit air pollution before these certificates will be issued. Penalties and criminal sanctions are imposed for noncompliance with the National Management: Air Quality Act.</p>	<p>Other aspects of the NEMAQA such as monitoring and application of management/mitigation measures may apply during closure.</p>
<p><b>The National Environmental Management: Biodiversity Act, 2004:</b> The Act seeks amongst other things, to manage and conserve biological diversity, to protect certain species and ecosystems, to ensure the sustainable use of biological resources and to promote the fair and equitable sharing of benefits arising from bio-prospecting involving those resources. The NEM: BA includes a Regulation related to the management of threatened and protected species. A similar Regulation is applied to Threatened Ecosystems. NEM: BA has a set of norms and standards for the development of management plans for both species (e.g. Threatened or Migratory Species) and ecosystems (Endangered or Critically Endangered).</p>	<p>If relevant species or threatened ecosystems are presence on the mine concession, a management plan must be developed in alignment with these norms and standards.</p>
<p><b>National Water Act Section 19 of the NWA</b> sets out the principles for “an owner of land, a person in control of land or a person who occupies or uses land” to:</p> <ul style="list-style-type: none"> <li>• Cease, modify or control any act or process causing pollution;</li> <li>• Comply with any prescribed waste standard or management practice;</li> <li>• Contain or prevent the movement of pollutants;</li> <li>• Eliminate any source of pollution;</li> <li>• Remedy the effects of the pollution; and</li> <li>• Remedy the effects of any disturbance to the bed and banks of a watercourse</li> </ul>	<p>This places the obligation to mitigate any aspects that cause or have caused pollution as well as to remediate any residual contaminated water at closure.</p>
<p><b>Mine Health and Safety Act, 1996:</b> This Act deals with the protection of the health and safety of persons in the mining industry but has some implications for environmental issues due to the need for environmental monitoring within mine operations and maintenance of mine residue deposits.</p>	<p>All closure activities will have to be undertaken in a safe manner where the Health and Safety of all workers involved in closure activities is protected.</p>

### **3 DESCRIPTION OF THE RECEIVING ENVIRONMENT**

#### **3.1 Geology**

The project is located within the isolated sedimentary basins on the north western border of the Witbank Coalfield. The general geology is of the Karoo Supergroup with accompanying Ecca formation structures such as sandstone, shale and dolerite intrusions from time to time. The Witbank coalfield is, historically, the most important coal-producing region in South Africa. Bituminous coal is hosted in the Permian Vryheid Formation (Karoo Supergroup) and five coal seams exist in the region, although not all are economically exploitable.

The coal seams are numbered from 1 at the bottom to 5 at the top. The distribution of the Nos. 1 and 2 Seams is determined by the pre-Karoo topography, while the Nos. 4 and 5 Seams extent is controlled by the present-day surface. Dykes and sills devolatilize the coal and displace the seams if present.

The basin is a multiple seam deposit type with the development of five major seam horizons which may in places be composite seams. The major controls for the development of the coal are proximity to undulations of the “basement” topography, through erosion channeling and sediment influx into swamp beds and finally erosion of the current erosion surface. The primary economic coal seams have been the No. 2 Seam and No. 4 Lower Seam and, in places, the No. 5 Seam. Structurally, the coal horizons are un-deformed with each displaying a very slight dip to the south east of less.

There are a number of active coal mines surrounding the prospecting area which is a good indication that the selected properties will be prospective.

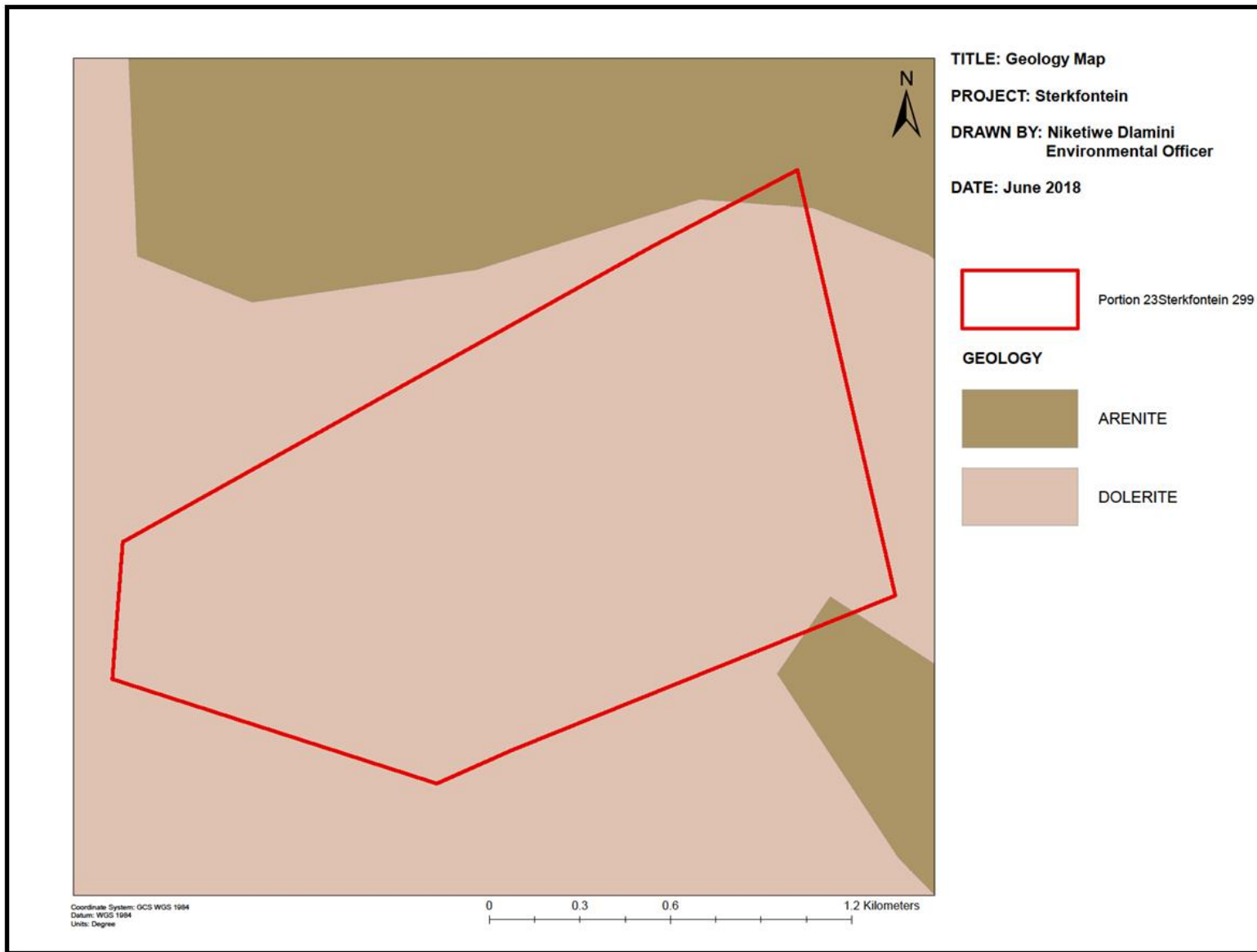


Figure 2 Geology of the Site

### 3.2 Climate

In Bethal, the climate is warm and temperate. In winter, there is much less rainfall in Bethal than in summer. The average annual temperature is 15.5 °C. The rainfall here averages 710 mm. The driest month is July. There is 6 mm of precipitation in July. With an average of 122 mm, the most precipitation falls in January.

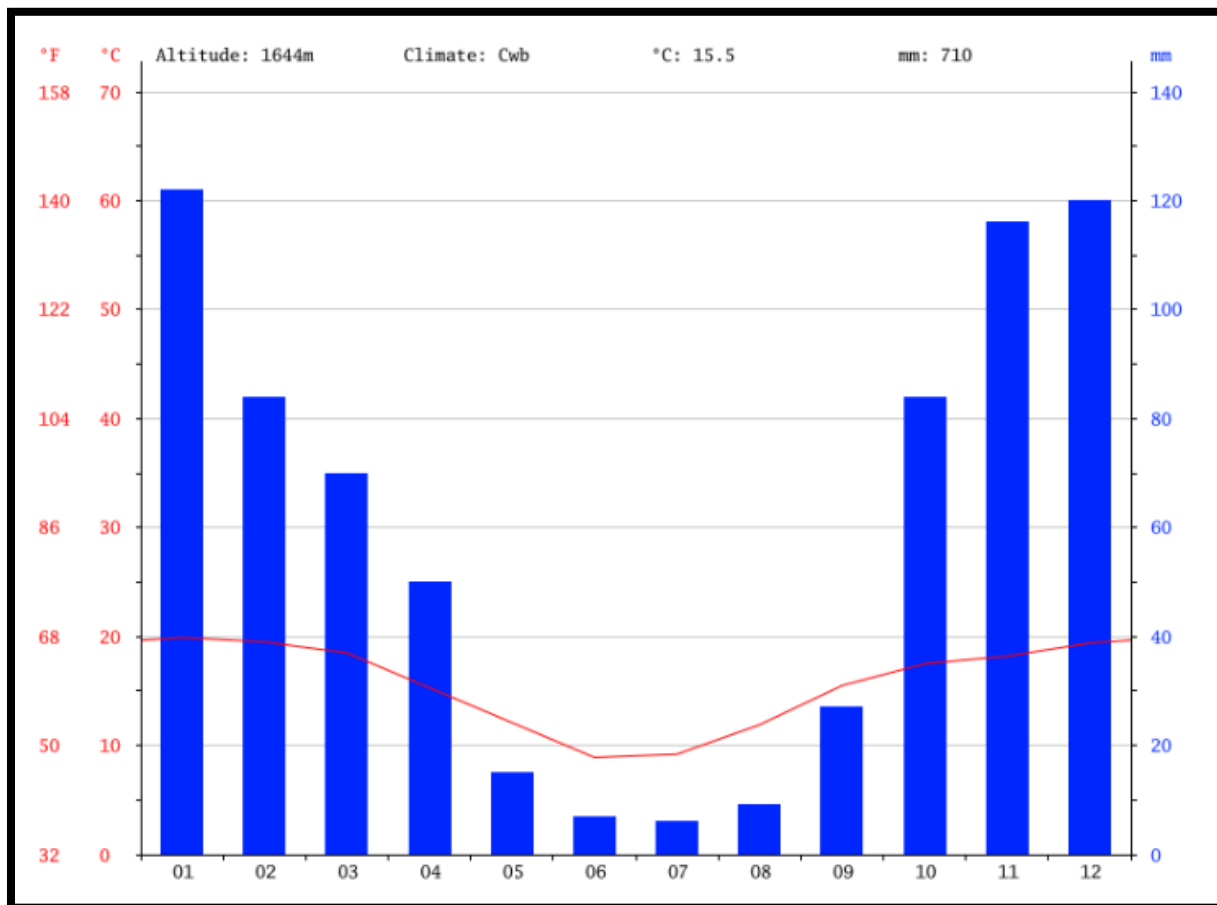


Figure 3 Climate Graph, Weather by Month in Bethal

With an average of 19.9 °C, January is the warmest month. June has the lowest average temperature of the year. It is 8.9 °C.

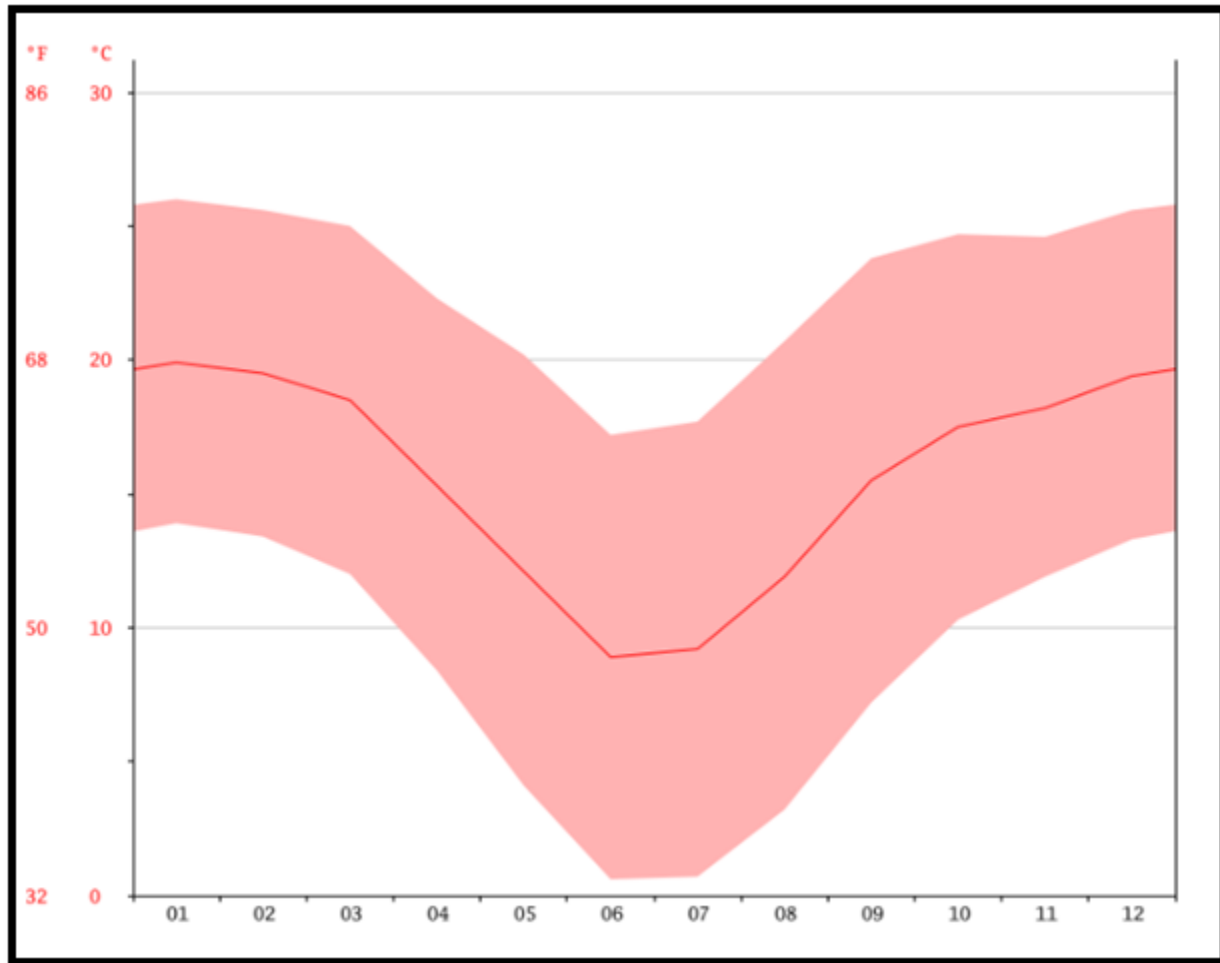


Figure 4 Temperatures per Month in Bethal

### 3.3 Topography

The project area falls within the Vaal Water Management Area and forms part of the Upper Vaal Catchment. The area is located within the quaternary catchment C11H. There are two main drainage lines found on the site. These drain towards the local streams which are located on the south and the east of the site. The topography of the region is gently undulating landscape of the Highveld plateau.

### **3.4 Soils & Land Capability**

The soils in the region are mostly derived from the geology of the region namely, predominantly shale, sandstone or mudstone of the Madzaringwe Formation (Karoo Supergroup), or the intrusive Karoo Suite dolerites which feature prominently in the area. The soils on the sandstones are generally deep with a brown colour, while the dolerites generally form dark clay soils. The agricultural soils found on site support an industry of commercial maize production. These soils drain well and provide good to moderate cultivation opportunities.

### **3.5 Natural vegetation**

According to the South African National Biodiversity Institute, the study area falls within the Grassland Biome, where most of the county's maize production occurs. The site is characterised by Moist Clay Highveld Grassland. This grassland is usually restricted to flat plains or bottomlands, mostly on moist, deep, clayey and poorly drained, seasonally wet soils, adjacent to wetlands, seasonal as well as perennial rivers. These habitats are often fairly unstable due to seasonal flooding and drying, which, together with frequent overgrazing, cause degradation of the vegetation (Bezuidenhout & Bredenkamp 1990).

*Eragrostis plana* is conspicuous, often dominant member of this grassland type. *Paspalum dilatatum*, and the rhizomatous *Cynodon dactylon*, often presents in degraded sites, are also diagnostic, as well as the forbs *Crabbea acaulis*, *Berkheya radula*, *B. pinnatifida* and *Trifolium africanum*. Grass species such as *Eragrostis curvula*, *Themeda triandra*, *Setaria sphacelata* and *Digitaria eriantha* are often abundantly present, and may be locally dominant, while forbs are generally quite rare (Coetzee et al. 1995; Bredenkamp & Brown 2003).

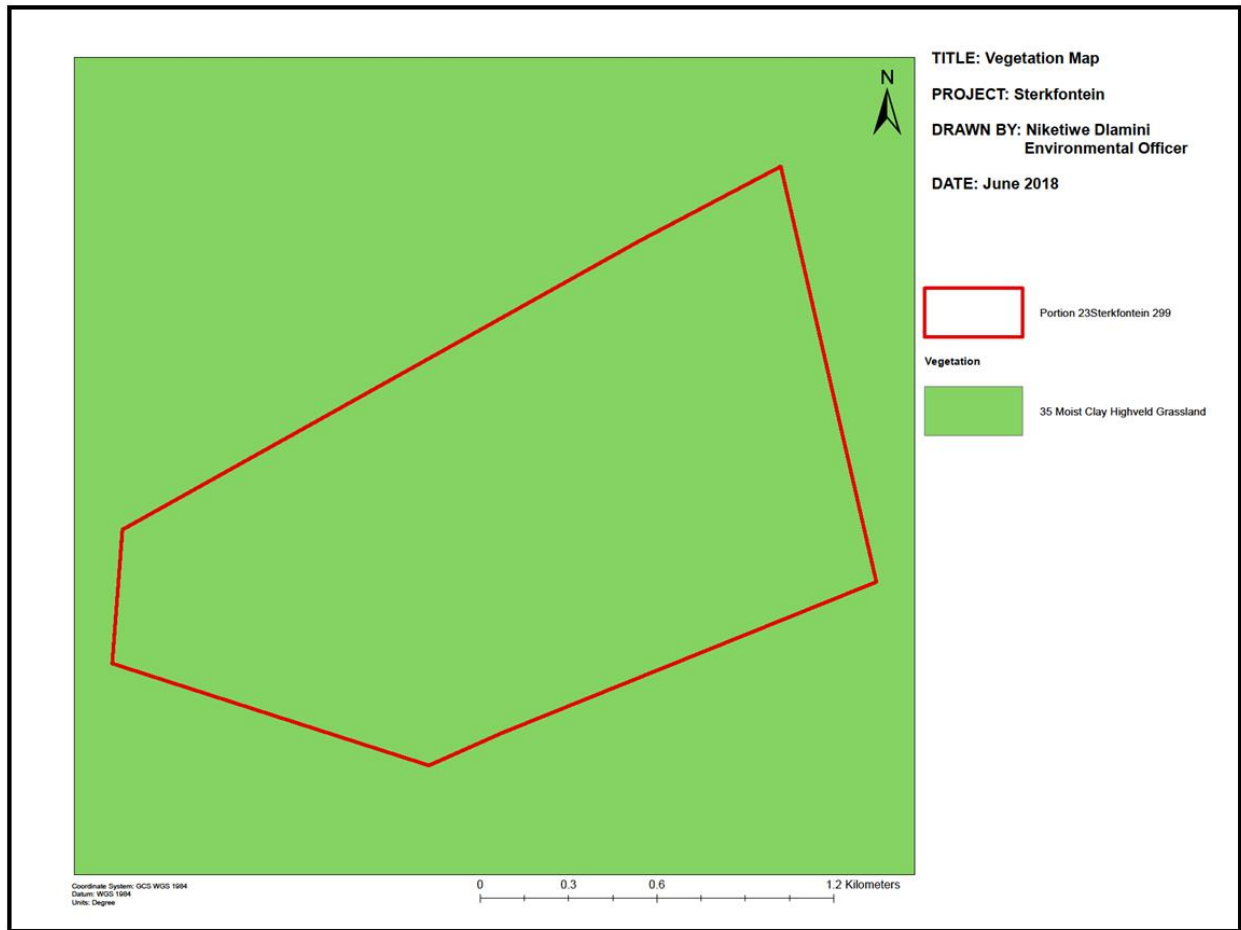


Figure 5 Vegetation Map

### 3.6 Fauna

The fauna that inhabits the Project area comprises of various mammals; arachnids, various reptile species, insect species, amphibians and various bird species. The fauna expected to be observed in the study area are, for the most part, typical grassland species and representative of grassland animal communities that are widespread in the regional areas.

As a consequence of mining and farming in the area, it appears that only small animals are to be found at the site. Small mammals known to occur in the area include hedgehog, rabbits, mongoose, meerkat and the ubiquitous rats and mice. Given the habitat, it is likely that korhaans, larks, longclaws, species of Euplectes (bishops and widows), weavers, starlings and sparrows occur in the grassland.

### 3.7 Surface water

The site is located in the Vaal Catchment (Catchment C) surface water drainages within the proximity of the site, namely the Bleskopspruit to the East, Kwaggalaagte to the south and the Vaal to the West. The topography is sloping towards the local streams. The streams and their associated dams support a number of faunal and floral species uniquely adapted to these aquatic ecosystems and therefore all surface water bodies are earmarked as sensitive features and should be avoided as far as possible.

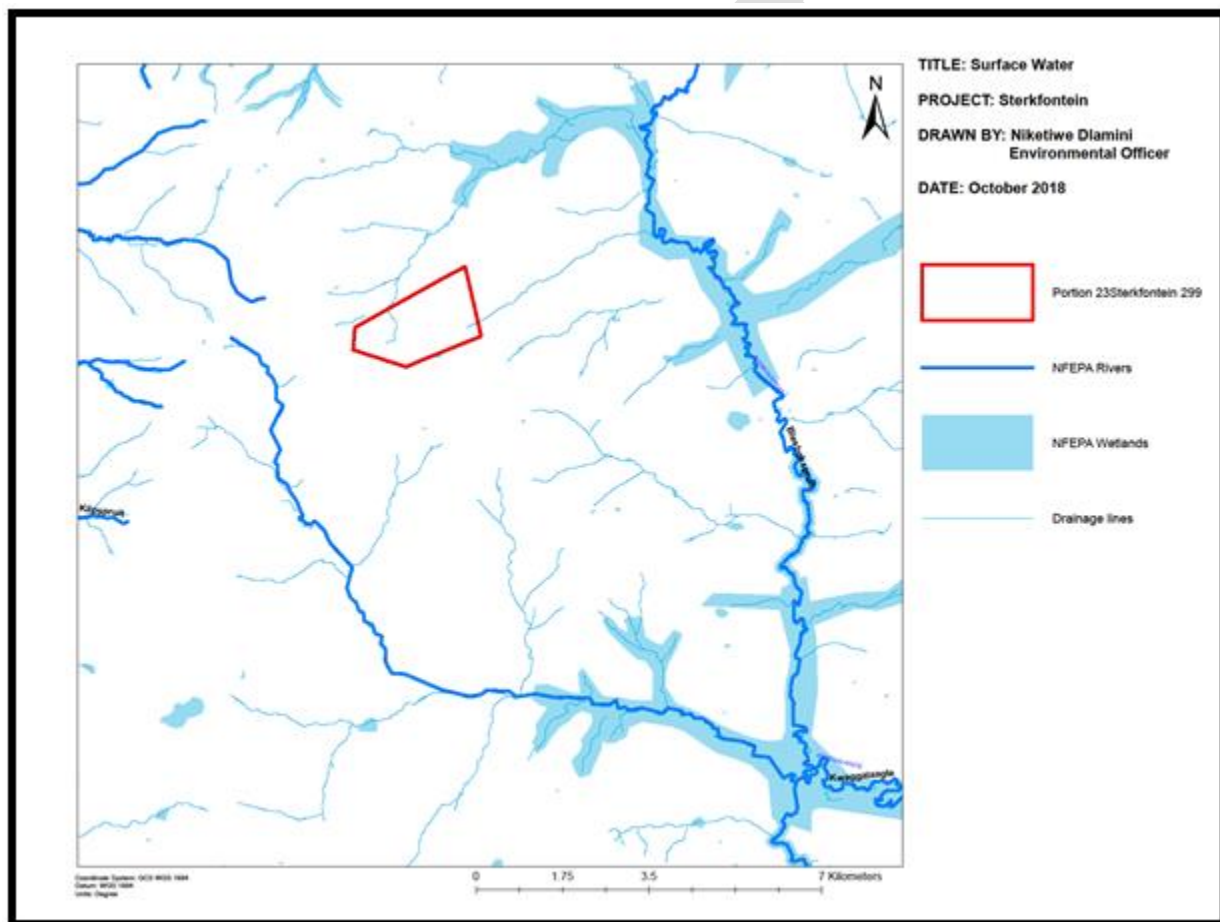


Figure 6 Surface Water on site

### 3.8 Groundwater

The groundwater is characterised by two groundwater aquifers, including a weathered aquifer occurring at a depth of between 8 and 14 m below existing ground level, and a fractured rock aquifer occurring at depths greater than 20 m below existing ground level. The weathered aquifer occurs within the weathered shale, siltstone and mudstones of the Karoo Formation, this aquifer consequently has a low permeability of, on average, 0.005 m/day, whereas the fractured rock aquifer has a very low permeability of, on average, 0.0004 m/day. The low permeability's of the weathered and fractures rock aquifer will limit the movement of contaminants within the groundwater system. Groundwater flows in a northerly easterly direction towards the Blesbokspruit with a relatively low hydraulic gradient of 0.08, based on topographical elevations.

### **3.9 Regional socio-economic structure**

A socio-economic profile of the municipality is very critical in assisting a municipality with how to plan and properly utilise its resources. It also assists developers in identifying gaps in the local municipality and where their focus should be in terms of social responsibility projects. A socio-economic profile is an important tool that provides data on three primary areas of concern, ie. Social Services, Economic Services and Spatial/Developmental Services.

Approximately 62% of the employed population earn a salary between R1 and R38 400 annually, which sets the basis for a low paid labour force and high poverty rates in GMM. There is high youth unemployment within the Municipality. Of the total number of households within Govan Mbeki LM, 56% fall within the poverty range. This poses significant challenges when related to the quality of life of these households, not being able to afford school fess, lack of medical care, lack of food and lack of services.

#### **3.9.1 Population and Profile Size**

Govan Mbeki has the 1st largest population in the Gert Sibande District with a population size of 340091 in 2016 compared to 294538 in 2011. The population grew on average by 3.1 % between 2011 and 2016 as compared to the district wide growth of 1.88 %. This could be the result of

people migrating to the municipality seeking job opportunities as Govan Mbeki is considered to be one of the economical hub of Mpumalanga for job seekers.

Govan Mbeki is the most prominently 2nd fastest growing population with an annual population growth rate of 3.10% in the whole of the Mpumalanga Province after Steve Tshwete with a population growth of 4.29%. A population growth of this proportion is likely to place strain on existing backlogs and the municipality's ability to effectively service the community. Because of the increase in households which directly demand services. The existing population within the developed areas of Govan Mbeki (urban and rural) totals 340 091 representing 108 894 households, at an average of 3.3 people per household and a population growth rate of 3.

### 3.9.2 Households and Services

The number of households for the Govan Mbeki Municipal Area increased from 83874 in 2011 to 108894 in 2016. The statistical data offers insight into the fact that Govan Mbeki has experienced the highest population and household growth annually. An annual growth increase of 5.80% in the total number of households within the municipal area and rank Govan Mbeki as the fastest growing population in Gert Sibande district with an Average Household size of 3.12%. Govan Mbeki have the highest number of child headed households within the Gert Sibande District of whom mainly girls under the age of 17 are the headed households.

### 3.9.3 Major economic activities and sources of employment

The main economic attraction towards GMM is the dominant presence of mining and manufacturing activities. From the table below, it is clear that the mining sector (39%) and manufacturing sector (24%) contributes the most in terms of GDP.

Table 2 Economic Drivers

**Govan Mbeki's sector GDP contributions, percentage shares of the economy and Tress Index ranking per sector**

<b>Economic Sector</b>	<b>GDP (Rands)</b>	<b>% Share</b>	<b>Tress Index Ranking</b>
Mining	10 574 495 600	39%	9
Manufacturing	6 590 891 943	24%	8
Wholesale and trade	4 168 093 454	15%	7
Government and community service	2 396 477 705	9%	6
Business services	1 338 062 167	5%	5
Transport	1 189 554 953	4%	4
Agriculture	367 050 120	1%	3
Construction	354 147 947	1%	2
Electricity and water	351 098 875	1%	1
<b>Total:</b>	<b>27 329 872 764</b>	<b>100%</b>	<b>n.a.</b>
<b>Tress Index: 62.5</b>			

(Source: Regional Economic Indicators, 2011)

#### 4 CLOSURE VISION, OBJECTIVES AND TARGETS

The closure vision for the proposed project is to establish a safe, stable and non-polluting post-prospecting landscape that can facilitate integrated, self-sustaining and value generating opportunities, thereby leave a lasting positive legacy. This plan is aimed at achieving the following targets:

- Creating a safe, physically stable rehabilitated landscape that limits long-term erosion potential and environmental degradation;
- Sustaining long term catchment yield and water quality;
- Focusing on establishing a functional post-prospecting landscape that enables self-sustaining agricultural practices where possible;
- To encourage, where appropriate, the re-instatement of terrestrial and aquatic wetland biodiversity

## 5 ALTERNATIVES CONSIDERED

Considering that this is a prospecting application, the proposed prospecting project is not complex and the risks associated with prospecting are understood and can be mitigated at closure. Alternative options for closure are limited. There are only two options that have been considered as activity alternatives for the closure plan:

Preferred Alternative: Closure/ Backfill of boreholes with overburden removed during drilling

Alternative 1: To Leave boreholes open, in-order to allow for groundwater recharge by surface run-off

### 5.1 Preferred Alternative: Rehabilitation/ Backfill of boreholes

Rehabilitation is the restoration of a disturbed area that has been degraded as a result of activities such as mining, road construction or waste disposal, to a land use in conformity with the original land use before the activity started. This also includes aesthetical considerations, so that a disturbed area will not be visibly different to the natural environment. This also involves maintaining physical, chemical and biological ecosystem processes in degraded environments, hence the preferred option of backfilling the boreholes with the overburden removed during development and cover with growth medium to establish vegetation. This option has several advantages as discussed below:

#### Advantages

- The site will be aesthetically acceptable;
- The site will blend in with the environment;
- The site will go back to being a suitable habitat for fauna and flora;
- The site will be safe and pollution free;
- Revegetating the site will ensure that the site is non-erodible.

Opting for alternative 1, which is to leave boreholes without backfilling poses a risk in that, these boreholes may fill in with water, which may become attractive to wildlife and communities leading to drowning and the risk of being trapped in the declines. To mitigate these risks, it is necessary to backfill. Treatment technologies should be used to prevent decanting.

## **6 CLOSURE ASSUMPTIONS**

This closure plan has been developed based on limited available information including environmental data. Some of the information currently available may need to be supplemented during the operational period. Therefore, a number of assumptions were made about general conditions, and closure and rehabilitation of the facilities at the site to develop the proposed closure actions. As additional information is collected during operations, these assumptions will be reviewed and revised as appropriate.

The assumptions used to prepare this plan include the following:

- The closure period will commence once the last planned weight of coal has been extracted from the site for laboratory testing;
- The proposed prospecting sites will be adhered to minimise the potential impacts;
- Vegetation establishment will be in line with a project area's indigenous vegetation
- Water management infrastructure developed for the operational phase will be retained for closure /end of the life of the project as necessary;
- There are limited opportunities for any infrastructure to be built on site and if any infrastructure is built, it will be of limited benefit to the community. Therefore, all buildings will be demolished;
- All hazardous and domestic waste will be transported offsite for disposal in licensed landfills;
- No roads are anticipated to be constructed to access the site, existing roads will be used as far as possible. Where access tracks have been developed in cases where there are no roads, these will be rehabilitated and closed as part of normal closure actions.

## **7. FINAL LAND USE**

Post closure land use, will return to being agricultural activities. This will include livestock farming, cultivation and plantations. The built-up environment on these farms will not be disturbed during prospecting activities and these will continue to exist post closure.

## **8. CLOSURE AND REHABILITATION ACTIVITIES**

The rehabilitation actions intended to be undertaken at the end of the life of the proposed prospecting activities are described below. These actions are designed to comply with the objectives of this plan which are derived from NEMA GN 1147.

### **8.1 Infrastructure**

All infrastructures will be decommissioned and the footprints rehabilitated for the establishment of vegetation. Material inventories will be managed near the end of prospecting activities to minimize any surplus materials at closure. Where practicable, equipment and materials with value not needed for post-closure operations will be sold and or removed from the site. Equipment with scrap or salvage value will be removed from the site and sold to recyclers.

A soil contamination investigation will be conducted on completion of demolition activities. The purpose of this is to identify areas of possible contamination and design and implement appropriate remedial measures to ensure that the soil contaminants are removed.

Closure actions will include:

- All power and water services to be disconnected and certified as safe prior to commencement of any decommissioning works;
- All remaining inert equipment and decommissioning waste will be disposed to the nearest licensed general waste disposal facility;
- Salvageable equipment will be removed and transported offsite prior and during decommissioning;
- All tanks, pipes and sumps containing hydrocarbons to be flushed or emptied prior to removal to ensure no hydrocarbon/chemical residue remains;

### **8.2 Boreholes**

Closure of boreholes will entail backfilling with overburden stripped ahead of prospecting activities. All overburden should be replaced into the void and the final surface reshaped to simulate surrounding topography while ensuring that the surface is free draining.

Once backfilling is complete a growth medium cover will be placed and vegetation will be established. There may be a requirement to include sacrificial erosion protection measures on the surface while vegetation is being established.

### **8.3 Roads and parking areas**

Existing roads will be used as far as possible. Closure actions concerning roads and parking areas will include:

- Removal of all signage, fencing, shade structures, traffic barriers, etc.;
- All 'hard top' surfaces to be ripped along with any concrete structures;
- All potentially contaminated soils are to be identified and demarcated for later remediation; and
- All haul routes that have been treated with saline dust suppression water need to be treated, with the upper surface ripped and removed to designated contaminant disposal areas.

### **8.4 Remediation of Contaminated Areas**

All soil, contaminated with hydrocarbons, will be identified, excavated, if possible to at least 200 mm below the contaminated zone and then treated.

- All tanks, pipes and sumps containing hydrocarbons will be flushed or emptied;
- Removed soils will be managed as determined by the nature and extent of the contamination;
- Liquid storage tanks will be emptied, the structure removed/demolished and sub-surface holes filled; and
- All equipment in which chemicals have been stored or transported will be cleaned and disposed of in a suitable disposal facility.

### **8.5 Vegetation**

Successful revegetation will help control erosion of soil resources, maintain soil productivity and reduce sediment loading in streams utilizing non-invasive plants that fit the criteria of the habitat (e.g. soils, water availability, slope and other appropriate environmental factors). Invasive species will be avoided and the area will be managed to control the spread of these species.

To counter the effects of erosion, naturally occurring grassland species will be planted on slopes. These species will provide soil holding capacity and reduce runoff velocity. The flatter areas will be re-vegetated with the objective of creating a sustainable ecosystem. The occurrence of

protected plant species will need to be determined before vegetation is removed and the required permits will be obtained for either destruction or relocation.

## **8.6 Waste Management**

Waste management activities will include:

- Hazardous waste will be managed as per the Minimum Requirements for Handling, Classification and Disposal of Hazardous Waste.
- Non-hazardous will be disposed in the nearby licensed landfill site;
- Scrap and waste steel will be sold to recyclers.
- It may be necessary to fence temporary salvage yards for security reasons, particularly where these are located close to public roads.

## **9. ENVIRONMENTAL RISK ASSESSMENT**

Risks associated with the closure of the prospecting activities are described and a determination was taken to assess the nature of the risk and then risk is ranked according to predetermined criteria for probability and consequence. Five categories were considered to describe the nature of the risk. The nature of the risk was assessed to fall into one of the following categories:

- Health and Safety
- Environment
- Financial
- Legal and regulatory obligations
- Reputational, Social or Community

Once the risks had been captured the probability of the risk occurring as well as the consequence of the risk occurring were rated according to the criteria presented below. A matrix listing the probability and consequence is then used to numerically rank the risk and determine whether the risk level is: High, Moderate to high, Moderate, Moderate to low or Low.

Table 3 Significance rating

Score out of 100	Significance
1 to 20	Low
21 to 40	Moderate to Low
41 to 60	Moderate
61 to 80	Moderate to high
81 to 100	High

DRAFT

Table 4 Methodology

The status of the impact		
Status		Description
Positive:		a benefit to the holistic environment
Negative:		a cost to the holistic environment
Neutral:		no cost or benefit
The duration of the impact		
Score	Duration	Description
1	Short term	Less than 2 years
2	Short to medium term	2 – 5 years
3	Medium term	6 – 25 years
4	Long term	26 – 45 years
5	Permanent	46 years or more
The extent of the impact		
Score	Extent	Description
1	Site specific	Within the site boundary
2	Local	Affects immediate surrounding areas
3	Regional	Extends substantially beyond the site boundary
4	Provincial	Extends to almost entire province or larger region
5	National	Affects country or possibly world
The reversibility of the impact		
Score	Reversibility	Description
1	Completely reversible	Reverses with minimal rehabilitation & negligible residual affects
3	Reversible	Requires mitigation and rehabilitation to ensure reversibility
5	Irreversible	Cannot be rehabilitated completely/rehabilitation not viable
The magnitude (severe or beneficial) of the impact		
Score	Severe/beneficial effect	Description
1	Slight	Little effect - negligible disturbance/benefit
2	Slight to moderate	Effects observable - environmental impacts reversible with time
3	Moderate	Effects observable - impacts reversible with rehabilitation
4	Moderate to high	Extensive effects - irreversible alteration to the environment
5	High	Extensive permanent effects with irreversible alteration
The probability of the impact		
Score	Rating	Description
1	Unlikely	Less than 15% sure of an impact occurring
2	Possible	Between 15% and 40% sure of an impact occurring
3	Probable	Between 40% and 60% sure that the impact will occur
4	Highly Probable	Between 60% and 85% sure that the impact will occur
5	Definite	Over 85% sure that the impact will occur
The Consequence		= Magnitude + Spatial Scale + Duration + Reversibility.
The Significance		= Consequence x Probability.

Table 5 Outcome of Risk Assessment

Where Significance = Consequence x Probability															
RISK ISSUES DURING CLOSURE	WHAT IS THE ROOT CAUSE OF THE HAZARD?	WHAT ARE THE CONSEQUENCES?	BEFORE IMPLEMENTATION OF CLOSURE STRATEGY					SIGNIFICANCE RATING	CONCEPTUAL CLOSURE STRATEGY	AFTER IMPLEMENTATION OF CLOSURE STRATEGY					SIGNIFICANCE RATING
			E	D	R	M	P			E	D	I	R	P	
HEALTH AND SAFETY															
Boreholes or excavations which are not properly backfilled may pose health and safety risks such as injuries to animals and local community members accessing the site during post closure activities	Leaving boreholes opened	Injuries and loss of livestock	1	2	1	3	3	Negative Moderate Low risk (21)	A security fence including a perimeter fence should be retained to limit access during decommissioning.  Once prospecting activities are completed, backfilling should be undertaken as soon as practicable possible	1	2	1	3	2	Negative Low risk (14)
ENVIRONMENTAL															
Operational and decommissioning activities may result in soil being contaminated.	Dismantling of oil storage tanks, and oil drips from machinery.	Change in soil properties	1	2	1	3	3	Negative Moderate low risk (21)	Operational impacts will be remediated as far as possible during operation phase. During closure, contaminated soils with coal particulates and	1	2	1	3	2	Negative low risk (14)

									hydrocarbon will be removed and disposed according to regulatory requirements.						
<b>FINANCIALS</b>															
Delaying closure once prospecting activities are complete may allow for vandalism and interference of infrastructure which may lead to costlier remedial measures being implemented when closure actions are undertaken.	Poor security on site	Loss of equipment	1	2	3	3	3	<b>Negative Moderate low risk (27)</b>	Appropriate security measures will be retained to secure infrastructure until infrastructure can be demolished.	1	2	3	3	2	<b>Negative low risk (18)</b>
Closure material balance not sufficient to implement closure actions leading to environmental impacts remaining unmitigated.	Poor storage of subsurface material	Loss of indigenous backfill material	1	2	3	3	3	<b>Negative Moderate low risk (27)</b>	Material designated for closure will be protected within the operational foot print of the site. However, in the event that insufficient closure material is available, alternative sources will be investigated.	1	2	3	3	2	<b>Negative low risk (18)</b>
The closure quantum has been significantly underestimated and that funds insufficient funds are available to mitigate impacts at closure resulting in legal	Underestimating impacts	Poor rehabilitation of site	1	2	2	3	3	<b>Negative Moderate low risk (24)</b>	Thikho Resources will continually evaluate closure liability and will adjust estimates as more information becomes	1	2	2	3	2	<b>Negative low risk (16)</b>

obligations not being discharged.										available relating to operational impacts requiring mitigation, residual and latent closure risks, closure actions and rates for the implementation of the closure actions.						
REPUTATION, SOCIAL OR COMMUNITY																
Risk that labour expectations are not achieved if there are no livelihood replacement opportunities, leading to unrest of those who loose employment.	Closure of project	Loss of livelihood	2	2	3	2	2		Negative Low risk (18)	Continual engagement with internal stakeholders will be undertaken as described in the Social Labour Plan to assist with the transition to the post closure period.	2	2	3	2	1	Negative low risk (9)

## **10. CLOSURE COST ESTIMATION**

The liability for closure of the aspects associated with the prospecting activities has been determined using the approach advocated by the Department of Mineral Resources (DMR) Guideline Document for the Evaluation of the Quantum of Closure-Related Financial Provisions (2005). The approach to calculating the closure quantum as specified in the DMR Guideline which was utilised in this assessment is as summarized in Table 6 below.

DRAFT

Table 6 Closure Quantum

No.:	Description:	Unit:	A Quantity	B Master rate	C Multiplication factor	D Weighing factor 1	E=A*B*C*D Amount (Rands)
			Step 4.5	Step 4.3	Step 4.3	Step 4.4	
3	Access Roads	m²	0	R34.05	1	1.1	R0.00
10	General Surface Rehabilitation	ha	0.5	R105372.05	1	1.1	R57954.62
		Subtotal 1	Weighing factor 2 (step 4.4)			1.05	R60852.36
			According to Peri-urban				
		(Sum of total items 3 and 10 multiplied by <b>weighing factors</b> )					
1	Preliminary and General	Add 12% of Subtotal 1 if Subtotal 1 is less than R100,000,000.00					R7302.28
2	Contingencies	10% of Subtotal 1					R6085.24
		Subtotal 2					R74239.88
		VAT (15%)					R11 135.98
		(Subtotal plus VAT)				GRAND TOTAL	<u>R85 375.86</u>

## 11. MONITORING AND AUDITING

In terms of auditing and monitoring the following will be conducted:

- Internal monitoring, auditing and reporting – a review undertaken by Thikho Resources to update the plan to account for changes to the environment and risk profile and to update the liability assessment to reflect liability at that point in time;
- External monitoring, auditing and reporting – a review undertaken by the financial auditors as part of the annual financial/accounting audit to determine that the plan is appropriate and that the quantum of the liability is included in the operations provisions;
- Legislated audits – these are the auditing requirements of the Act, Regulation, EMPr and EA. Pertinent aspects relating to closure, such as changes to the risk assessment, changes in closure options and changes in the quantum of the liability will be reported

The findings from the various audits will be captured in the company's Environmental Management System (EMS) and responsibilities and timelines allocated to the rectification of the findings, as practical. Once addressed, these findings will be closed out, only after a second party has assessed that the finding is appropriately addressed.

The objective of the monitoring programme will be to track the recovery of the site in accordance with the overall closure objectives. The anticipated monitoring will include:

- Surface water: Quality monitoring against parameters as required by DWS
- Groundwater: Quality monitoring of aquifers against the parameters required by DWS
- Erosion monitoring: This will take the form of developing a representative reference site on the disturbed footprints and undertaking visual and topographic assessments to determine erosion rate.
- Vegetation establishment: Vegetation condition will be monitored using standard field techniques to determine whether the vegetation has been established with a species composition and density similar to that of the site prior to prospecting activities.
- Photographic records should be maintained together with findings, follow up actions and close out records as part of the company's Environmental Management System.

## **12. CONCLUSIONS**

Thikho Resources (2017367277 South Africa (Pty) Ltd will provide for the closure liability associated with the project through the purchase of a Bank Guarantee as allowed by the Financial Provision for Prospecting, Exploration, Mining or Production Operations Regulations, with the Bank Guarantee provided to the DMR following authorisation of the project.

DRAFT