



Figure 8.8-7 Visual exposure calculated from visibility and distance from nearest turbine. Sites visited for the photographic survey are also indicated.



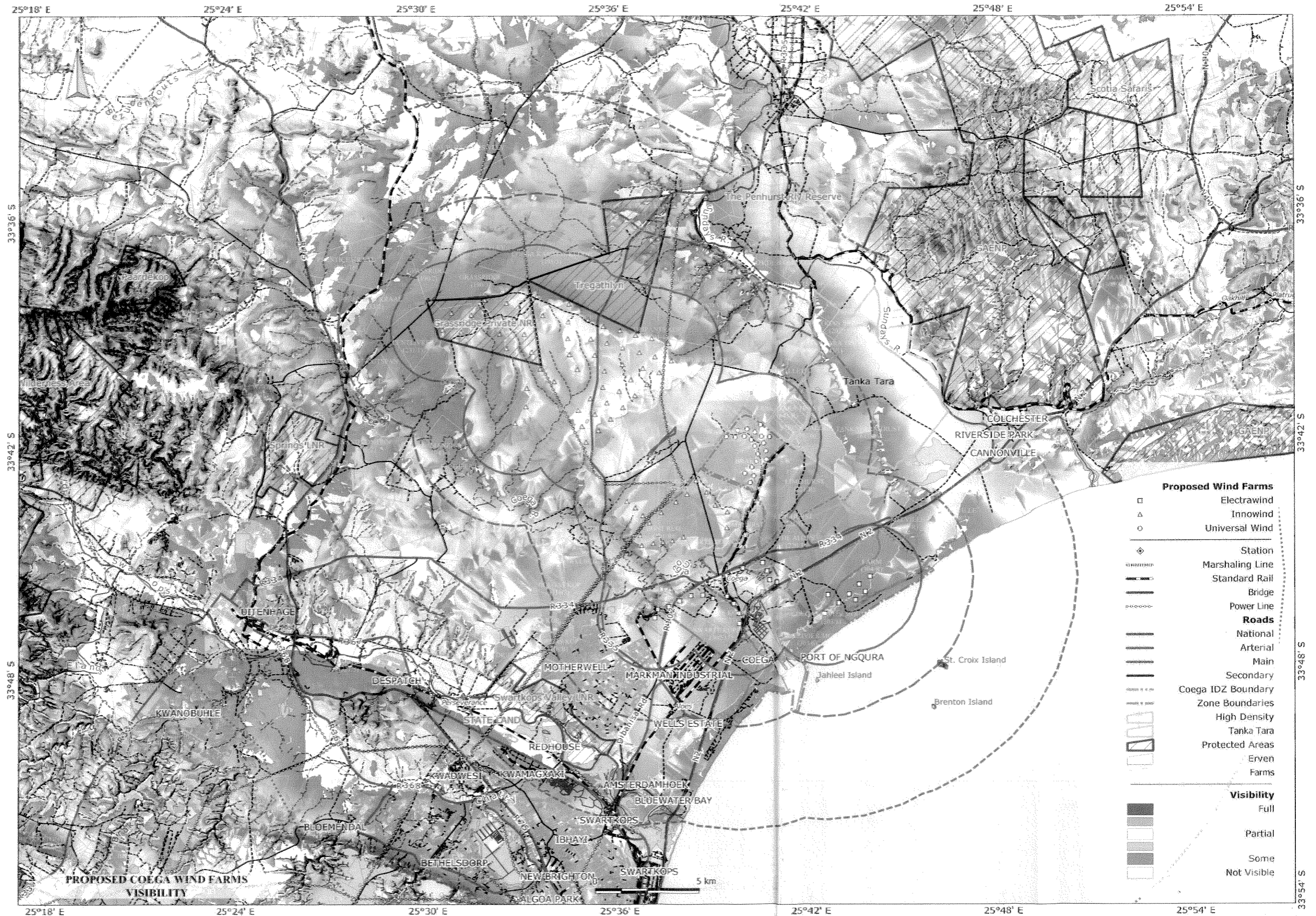


Figure 8.8-22 Viewshed map for three wind farms proposed for the Coega region. Shades of red indicate that many turbines (i.e. turbines of all three wind farms) will be visible from those areas. Blue areas indicate that only some turbines will be visible.



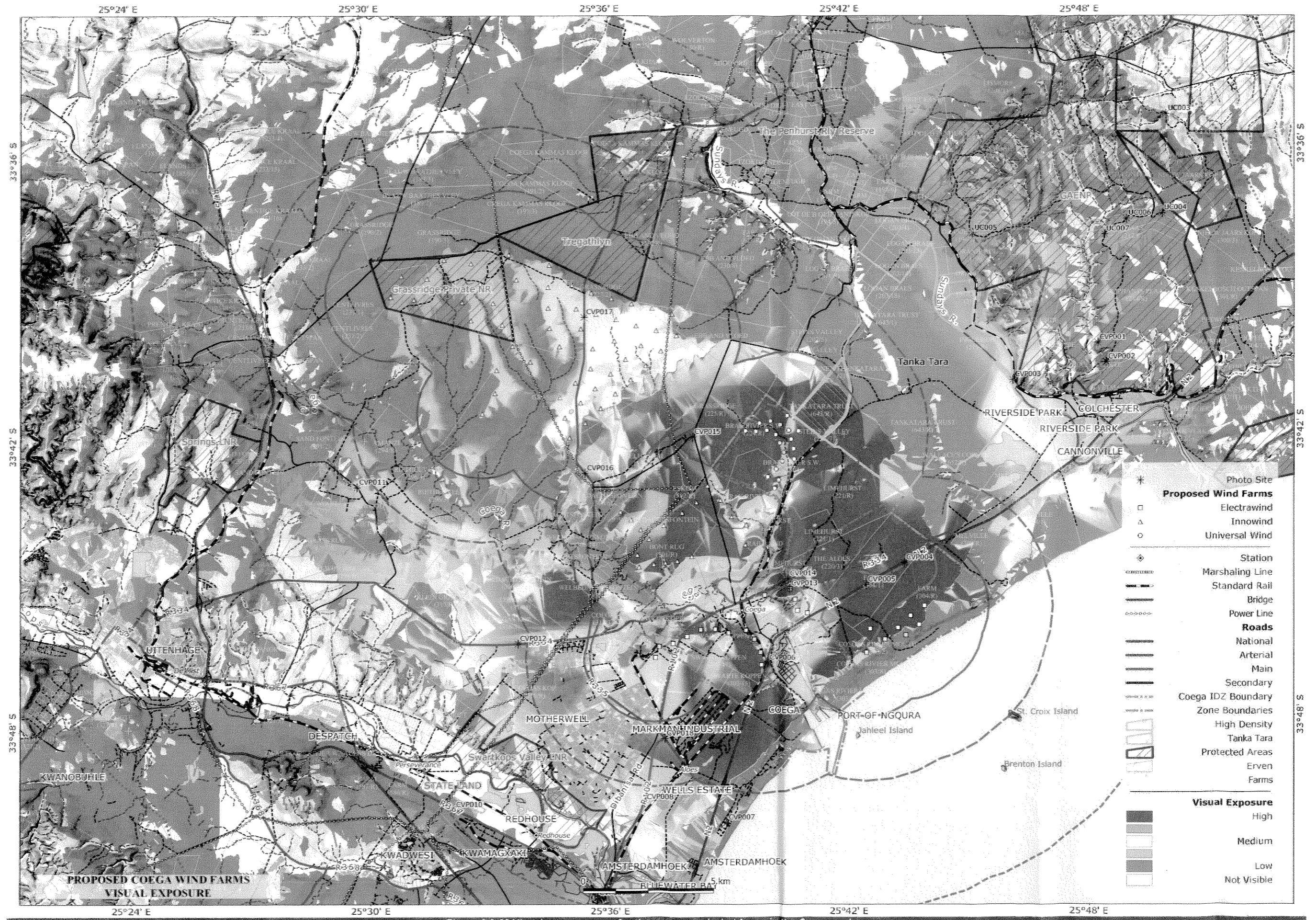


Figure 8.8-23 Visual exposure map for three proposed wind farms in the Coega region.



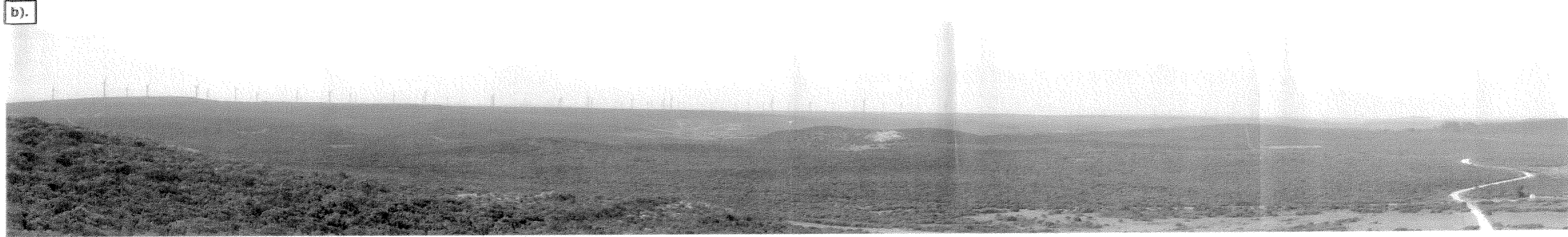


Figure 8.8-24 Cumulative effect of all three wind farms proposed for the Coega area. a). Panoramic view from a viewpoint in the Springs Resort (8km from nearest turbine). b). Photomontage of the same view with turbines. c). Panoramic view from viewpoint UC007 in Addo Elephant NP (14km from nearest turbine). d). Photomontage of the same view with wind turbines included.