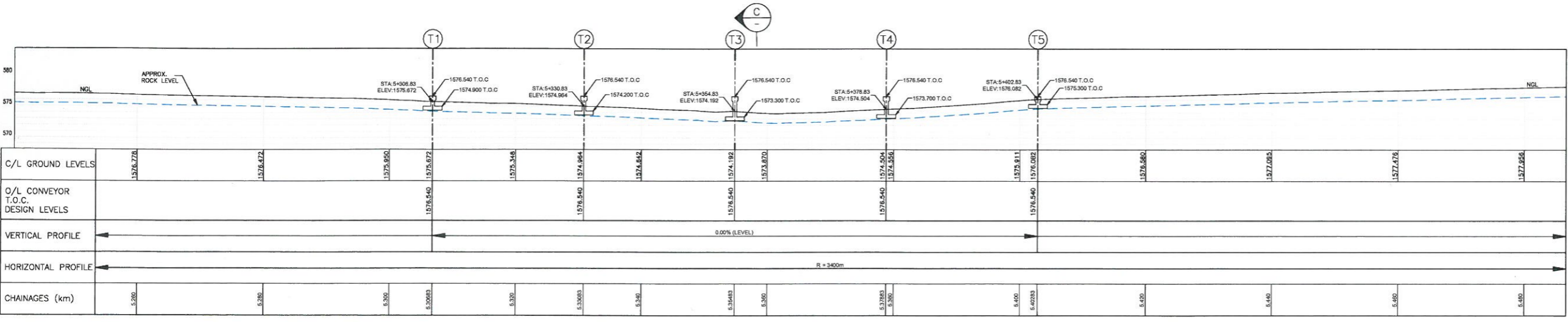
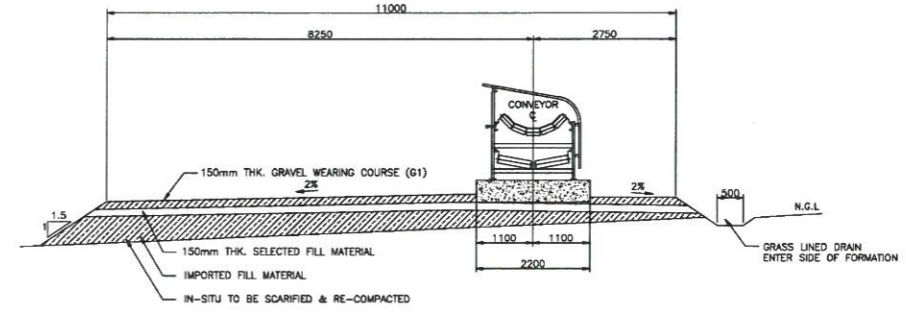
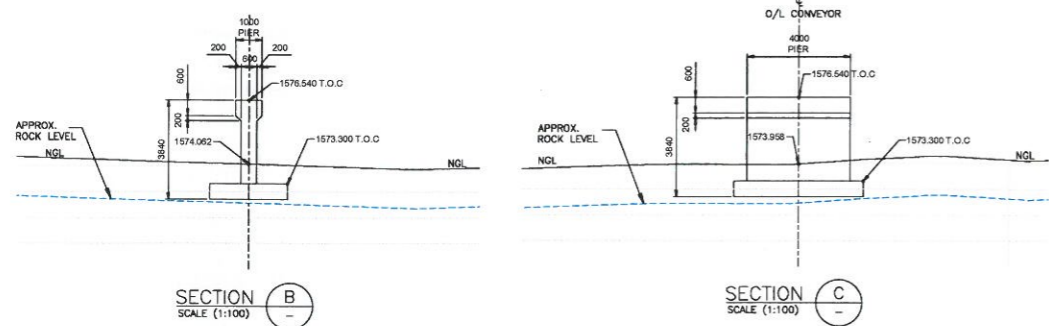
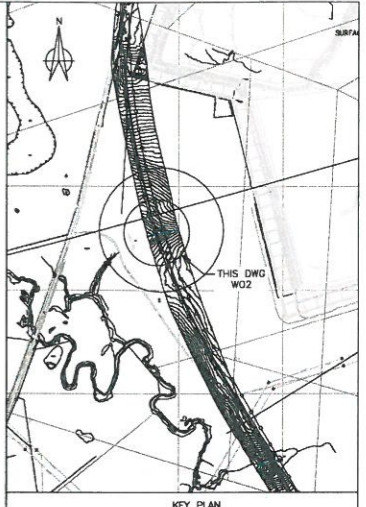


TYPICAL CUL-DE-SAC DETAIL
SCALE 1:500



SECTION A
SCALE (1:250)



NOTES:
1. SEE DRAWING 1174-0000-GE-DGA-0006-01 FOR GENERAL LOCATION OF ALL WATER CROSSINGS.



TITLE	NAME (print)	SIGNATURE	DATE
DRAWN	A. BHAT		
CHECKED	T. ALVAREZ		
DESIGN OFFICE	J. KLOPPER		29/10/11
DISCIPLINE ENG.	T. ALVAREZ		29/10/11
PROJECT ENG.	S. RAMDHAR		
ENG. MANAGER	H. HEUKELMAN		27/10/11
PR. MANAGER	R. HERBST		
SASOL PR. MANAGER	K. NKOSI		

REG. No.	PR. ENG / PR. TECH
ENG/TECH	
DRG SIZE:	A0

Sasol Mining (Pty) Ltd

COPYRIGHT NOTICE
THIS DRAWING IS PROTECTED BY COPYRIGHT AND IS THE SOLE PROPERTY OF SASOL MINING (PTY) LTD. NO PARTS MAY BE REPRODUCED OR TRANSMITTED IN ANY FORM OR BY ANY MEANS WITHOUT THE WRITTEN PERMISSION OF SASOL MINING (PTY) LTD. ALL RIGHTS RESERVED.

TITLE	NAME	DATE
CLIENT		
DESIGNER		
DRAUGHTSMAN		
CHECKER		
APPROVAL		
DESIGN ENG.		
REG No.		
CHANGE No.		

ITEM	QTY	DESCRIPTION	DRAWN	DATE	CHECK	DATE
ISSUED FOR SQUAD CHECK			C. THORNHILL	17.11.2011	F. NAUDE	17.11.2011
ISSUED FOR APPROVAL			C. THORNHILL	17.11.2011	F. NAUDE	17.11.2011

SASOL SECUNDA SHONDIINI MINE
E209
WATER CROSSING
TYPICAL CUL-DE-SAC DET.