

Radiocarbon Samples

Northing	Easting	Elevation	Sample Number	Site Name	Lot Number	Square	Quadrant	StratUnit Name	Date	Sample weight, g
6518852.271	768321.2398	24.9738	4945	A2SE-1	216	N851E321	NW	WB16T1G	8/5/2016	< 0.001
6518853.525	768321.4475	25.2369	6666	A2SE-1	220	N853E321	NW	WB16T1K	8/9/2016	< 0.001
6518850.908	768321.3475	24.5083	17125	A2SE-1	287	N850E321	NW	WB16T1BX	8/19/2016	< 0.001
6518850.767	768321.0404	24.4129	17923	A2SE-1	296	N850E321	NW	WB16T1CC1	8/22/2016	< 0.001
6518850.511	768321.4375	24.3079	18702	A2SE-1	308	N850E321	NW	WB16T1CQ	8/24/2016	< 0.001
6518852.724	768321.389	24.7547	20408	A2SE-1	344	N852E321	NW	WB16T1DX	8/30/2016	< 0.001
6518850.562	768321.3985	24.3208	22305	A2SE-1	308	N850E321	NW	WB16T1CQ	8/24/2016	< 0.001
6518850.813	768321.3846	24.1987	23501	A2SE-1	330	N850E321	NW	WB16T1DK	8/25/2016	< 0.001
6518850.641	768321.3776	24.1699	23504	A2SE-1	331	N850E321	NW	WB16T1DL	8/26/2016	< 0.001

Geochemistry samples from combined phytolith/pollen/geochemistry vertical transect

Northing	Easting	Elevation	Sample Number	Site Name	Lot Number	Square	Quadrant	StratUnit Name	Date	Sample weight, g
6518852.574	768321.2451	24.7639	270	A2SE-1		N850E321		GEOCHEM	8/30/2016	26
6518850.854	768321.5219	24.8096	273	A2SE-1		N850E321		SRCS JESS GEOCHEM	9/3/2016	36
6518850.866	768321.5269	24.6951	276	A2SE-1		N850E321		SRCS SIBONGISENI GEOCHEM	9/3/2016	49
6518850.849	768321.5289	24.6089	279	A2SE-1		N850E321		SRCS ROSA GEOCHEM	9/3/2016	41
6518850.868	768321.5403	24.5733	284	A2SE-1		N850E321		SRCS WEST GEOCHEM	9/3/2016	47
6518850.879	768321.542	24.5361	287	A2SE-1		N850E321		SRCS COURTNEY GEOCHEM	9/3/2016	43
6518850.858	768321.5442	24.4547	290	A2SE-1		N850E321		LBCS KUKA GEOCHEM	9/3/2016	69
6518850.978	768321.5295	24.3827	291	A2SE-1		N850E321		LBCS LILY GEOCHEM	9/3/2016	40
6518850.877	768321.5363	24.311	296	A2SE-1		N850E321		LBCS OTIS GEOCHEM	9/3/2016	64
6518850.887	768321.5521	24.2786	299	A2SE-1		N850E321		LBCS OLLIE GEOCHEM	9/3/2016	75
6518850.889	768321.5546	24.1566	302	A2SE-1		N850E321		LBCS KATE GEOCHEM	9/3/2016	82
6518850.934	768321.5268	24.0589	303	A2SE-1		N850E321		LBCS COLTON GEOCHEM	9/3/2016	76
6518852.574	768321.2451	24.7639	337	A2SE-1		N850E321		GEOCHEM	8/30/2016	21

Phytolith samples from combined phytolith/pollen/geochemistry vertical transect

Northing	Easting	Elevation	Sample Number	Site Name	Lot Number	Square	Quadrant	StratUnit Name	Date	Sample weight, g
6518851	768321.5	24.8096	272	A2SE-1		N850E321		SRCS JESS C	9/3/2016	47
6518851	768321.5	24.6951	275	A2SE-1		N850E321		SRCS SIBOM	9/3/2016	52
6518851	768321.5	24.6089	278	A2SE-1		N850E321		SRCS ROSA	9/3/2016	58
6518851	768321.5	24.5733	283	A2SE-1		N850E321		SRCS WEST	9/3/2016	73
6518851	768321.5	24.5361	286	A2SE-1		N850E321		SRCS COUF	9/3/2016	54
6518851	768321.5	24.4547	289	A2SE-1		N850E321		LBCS KUKA	9/3/2016	97
6518851	768321.5	24.3827	293	A2SE-1		N850E321		LBCS LILY C	9/3/2016	87
6518851	768321.5	24.311	295	A2SE-1		N850E321		LBCS OTIS	9/3/2016	92
6518851	768321.6	24.2786	298	A2SE-1		N850E321		LBCS OLLIE	9/3/2016	125
6518851	768321.6	24.1566	301	A2SE-1		N850E321		LBCS KATE	9/3/2016	111
6518851	768321.5	24.0589	305	A2SE-1		N850E321		LBCS COLT	9/3/2016	130

Pollen samples from combined phytolith/pollen/geochemistry vertical transect

Northing	Easting	Elevation	Sample Number	Site Name	Lot Number	Square	Quadrant	StratUnit Name	Date	Sample weight, g
6518851	768321.5	24.8096	271	A2SE-1		N850E321		SRCS JESS C	9/3/2016	31
6518851	768321.5	24.6951	274	A2SE-1		N850E321		SRCS SIBOM	9/3/2016	35
6518851	768321.5	24.6089	277	A2SE-1		N850E321		SRCS ROSA	9/3/2016	55
6518851	768321.5	24.5733	280	A2SE-1		N850E321		SRCS WEST	9/3/2016	64
6518851	768321.5	24.5361	285	A2SE-1		N850E321		SRCS COUF	9/3/2016	57
6518851	768321.5	24.4547	288	A2SE-1		N850E321		LBCS KUKA	9/3/2016	79
6518851	768321.5	24.3827	292	A2SE-1		N850E321		LBCS LILY C	9/3/2016	72
6518851	768321.5	24.311	294	A2SE-1		N850E321		LBCS OTIS	9/3/2016	93
6518851	768321.6	24.2786	297	A2SE-1		N850E321		LBCS OLLIE	9/3/2016	105
6518851	768321.6	24.1566	300	A2SE-1		N850E321		LBCS KATE	9/3/2016	104
6518851	768321.5	24.0589	304	A2SE-1		N850E321		LBCS COLT	9/3/2016	146

Sediment sample of marine shell hash from excavations for geochemistry analysis

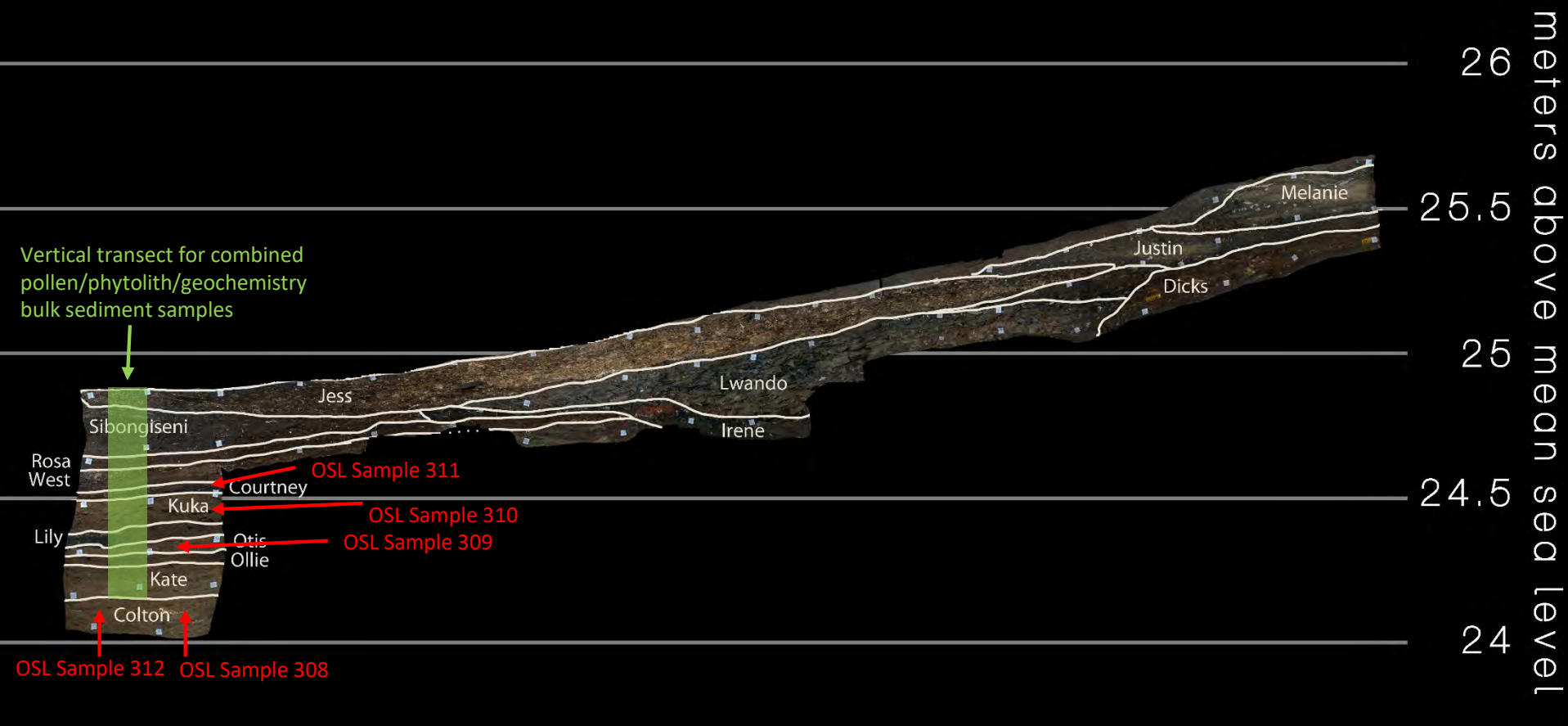
Northing	Easting	Elevation	Sample Number	Site Name	Lot Number	Square	Quadrant	StratUnit Name	Date	Sample weight, g
6518854.577	768321.47	25.5839	268	A2SE-1	369	N854E321	NW	WB16T1ET	8/30/2016	23
6518854.577	768321.47	25.5839	338	A2SE-1	369	N854E321	NW	WB16T1ET	9/15/2016	23

Samples of modern ash taken from the surface of A2SE-1

Northing	Easting	Elevation	Sample Number	Site Name	Lot Number	Square	Quadrant	StratUnit Name	Date	Sample weight, g
--	--	--	307	A2SE1	--	--	--	Geo-chem sample. Modern ashy layer from night guard, no more than 48 hours old, located about 15 metres west from main excavation area.	9/5/2016	22
--	--	--	339	A2SE1	--	--	--	Modern Ash, 1st half of specialist sample 307	9/15/2016	18
--	--	--	339	A2SE1	--	--	--	Modern Ash, 2nd half of specialist sample 307	9/15/2016	18

OSL Samples

Northing	Easting	Elevation	Sample Number	Site Name	Lot Number	Square	Quadrant	StratUnit Name	Date	Sample weight, g
6518850.704	768321.5234	24.1119	308	A2SE-1		N850E321		KATE\COLTON	9/5/2016	0.666
6518850.617	768321.5314	24.31	309	A2SE-1		N850E321		OTIS	9/5/2016	0.656
6518850.742	768321.5455	24.4457	310	A2SE-1		N850E321		KUKA	9/5/2016	0.543
6518850.592	768321.527	24.5344	311	A2SE-1		N850E321		COURTNEY	9/5/2016	0.514
6518851.022	768321.5165	24.0804	312	A2SE-1		N850E321		COLTON	9/5/2016	0.731
6518850.704	768321.5234	24.1119	313	A2SE-1		N850E321		KATE\COLTON	9/5/2016	1.128
6518850.617	768321.5314	24.31	314	A2SE-1		N850E321		OTIS	9/5/2016	1.062
6518850.742	768321.5455	24.4457	315	A2SE-1		N850E321		KUKA	9/5/2016	1.389
6518850.592	768321.527	24.5344	316	A2SE-1		N850E321		COURTNEY	9/5/2016	0.947
6518851.022	768321.5165	24.0804	317	A2SE-1		N850E321		COLTON	9/5/2016	1.5



West 321.5 stratigraphic section at Site A2SE-1 (Waterfall Bluff) showing the main sub-aggregates and the location of the OSL samples, and pollen/phytolith/geochemistry bulk sample vertical transect



OSL sample #308 and sediment sample for dosimetry #313



Sediment sampling hole for OSL Sample #308 within SubAggregate Colton



OSL sample #309 and sediment sample for dosimetry #314



Sediment sampling hole for OSL Sample #309 within SubAggregate Ollie



OSL sample #310 and sediment sample for dosimetry #315



Sediment sampling hole for OSL Sample #310 within SubAggregate Colton



OSL sample #311 and sediment sample for dosimetry #316



Sediment sampling hole for OSL Sample #311 within SubAggregate West



OSL sample #312 and sediment sample for dosimetry #317



Sediment sampling hole for OSL Sample #312 within SubAggregate Colton



Bulk sediment samples for pollen analysis from vertical transect.
Samples 271,274,277,280,285,288,292,294,297,300,304



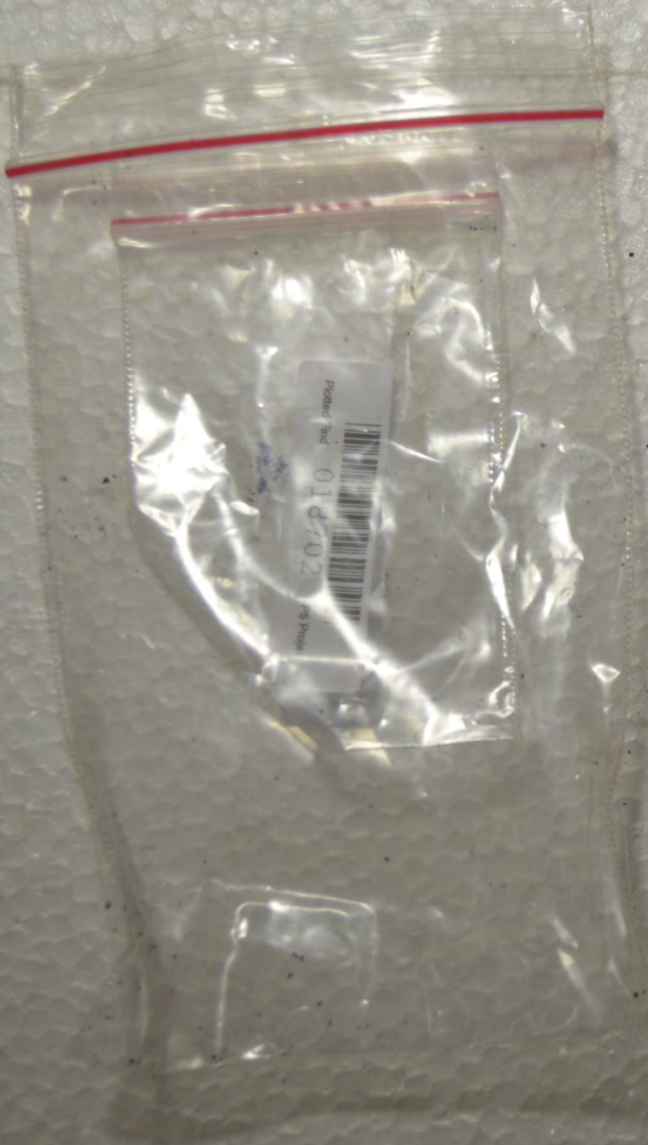
Bulk sediment samples for geochemistry from vertical transect. Samples: 273, 276,279,284,287,290,291,296,299,302,303



Bulk sediment samples for phytolith analysis from vertical transect.
Samples:272,275,278,283,286,289,293,295,298,301,305



Charcoal sample for radiocarbon analysis. Sample #23504



Charcoal sample for radiocarbon analysis. Sample #18702



Charcoal sample for radiocarbon analysis. Sample #22305

023501 P5 Project
Photoed Find



Charcoal sample for radiocarbon analysis. Sample #23501



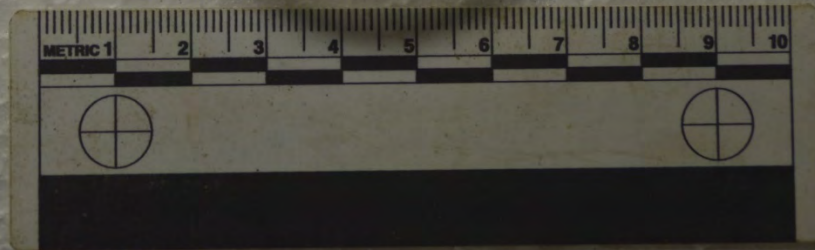
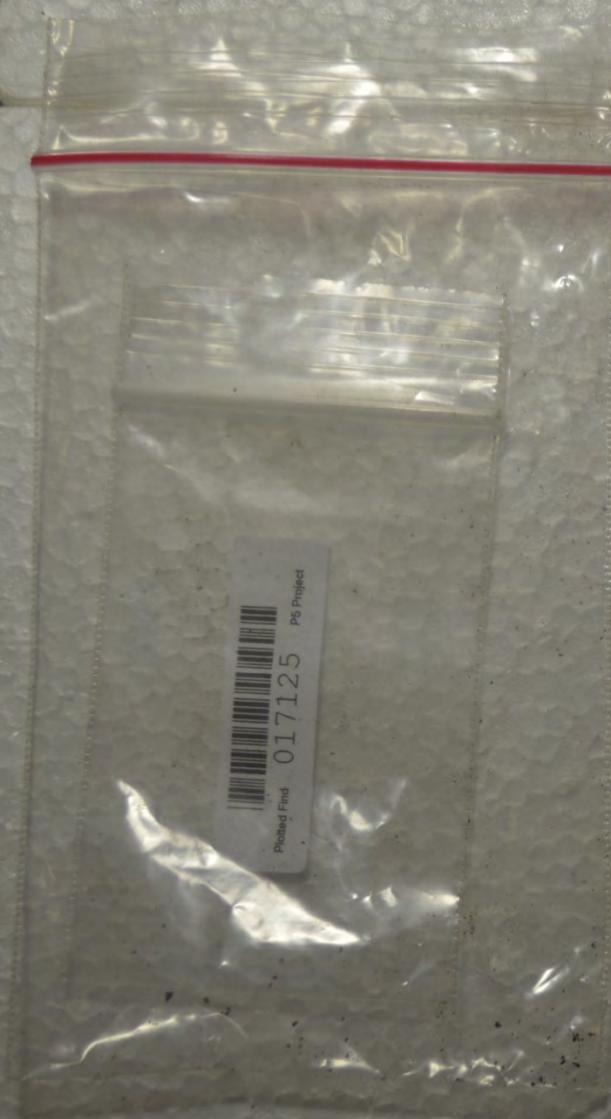
Plotted Find 017923 P5 Project



Charcoal sample for radiocarbon analysis. Sample #17923



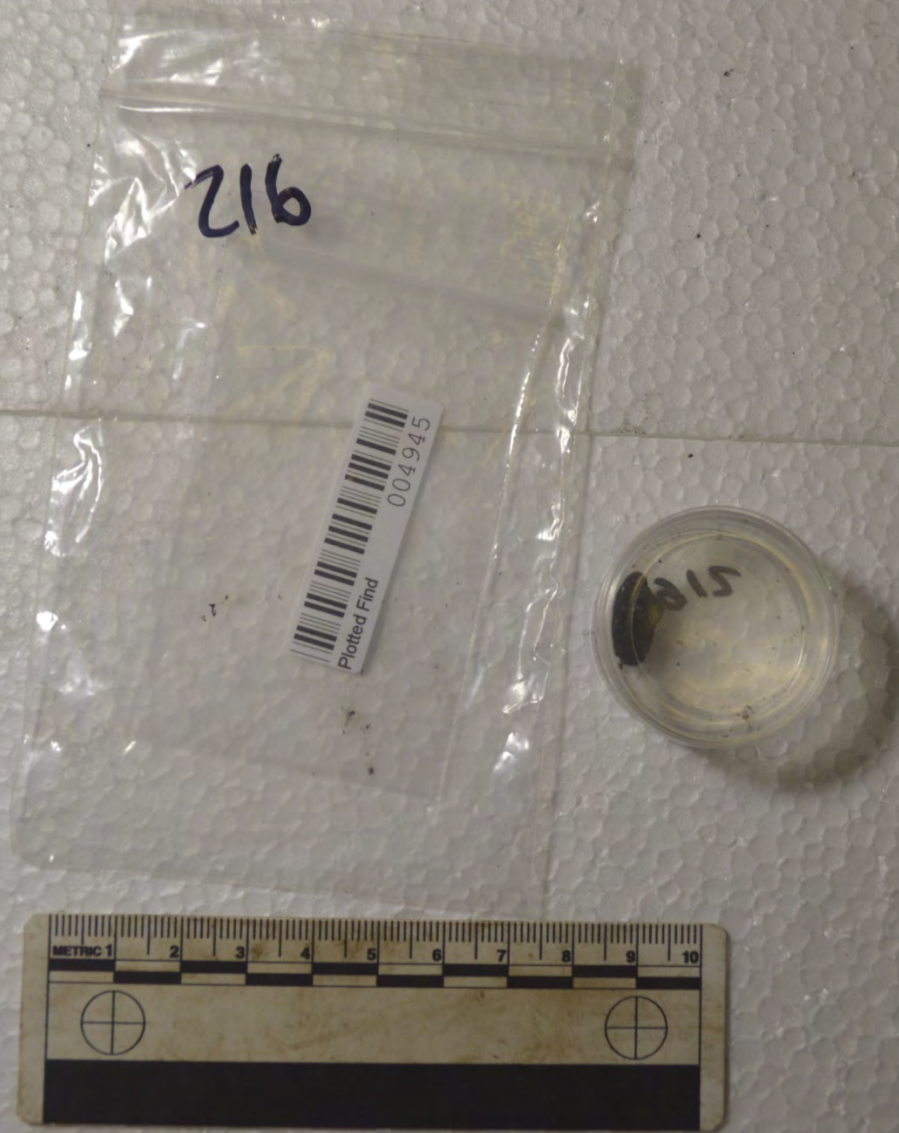
Charcoal sample for radiocarbon analysis. Sample #6666



Charcoal sample for radiocarbon analysis. Sample #17125



Charcoal sample for radiocarbon analysis. Sample #20408



Charcoal sample for radiocarbon analysis. Sample #4945



Sediment geochemistry samples #268,270,307. Sample 270 is shell-rich sediment. Sample 268 is sediment with altered shell remains. Sample 307 is ash from a modern campfire built on the surface of the site by a local fisherman.



Duplicates of samples Sediment geochemistry samples 268, 270, and 307. #337, 338, 339. Sample 337 is shell-rich sediment. Sample 338 is sediment with altered shell remains. Sample 339 is ash from a modern campfire built on the surface of the site by a local fisherman.