

# Basic Assessment Process for the Proposed Expansion of an Existing Crocodile Abattoir and Establishment of a Fish Farm on Riverview Farm, located on Portion 24 of the Farm Wagenbeetjes Draai No. 875, Albert Falls, KwaZulu-Natal

## BACKGROUND INFORMATION DOCUMENT

January 2021



### WHAT IS THE PURPOSE OF THIS DOCUMENT?

The purpose of this document is to:

- ◆ Inform Interested and Affected Parties (I&APs) about the proposed project, and to invite them to participate;
- ◆ Provide a brief background on the proposed project; and
- ◆ Explain the aims and objectives of the Basic Assessment Process.



### WHAT IS THE BACKGROUND TO THIS PROJECT?

The Applicant, Kelmark Trading CC, wishes to apply for Environmental Authorisation for the expansion of an existing crocodile abattoir and the establishment of a fish farm on Riverview Farm, located on Portion 24 of the Farm Wagenbeetjes Draai No. 875, Albert Falls, KwaZulu-Natal (refer to Figure 1 for the Locality Map).

In terms of the National Environmental Management Act (NEMA, Act No. 107 of 1998), and the Environmental Impact Assessment (EIA) Regulations of 2014 (as amended - 2017), published in Government Notice No. R. 327, 325 and 324 of 2017, certain Listed Activities require either a Basic Assessment Process (GNR 327 and GNR 324) or a Scoping and EIA Process (GNR 325) to be conducted in order to obtain Environmental Authorisation. The proposed project may trigger the following Listed Activities which require a Basic Assessment Process to be conducted. It must be noted that during the process it may become apparent that additional triggers are relevant to this Application:

Government Notice No. R	Part No.	Description
GNR 327	Part 6	<i>The development and related operation of facilities, infrastructure or structures for aquaculture of i) finfish, crustaceans, reptiles or amphibians, where such facility, infrastructure or structures will have a production output exceeding 20 000 kg per annum (wet weight)...</i>
GNR 327	Part 12	<i>The development of ii) infrastructure or structures with a physical footprint of 100 square metres or more; where such development occurs a) within a watercourse... c) if no development setback</i>

		<i>exists, within 32 metres of a watercourse, measured from the edge of a watercourse...</i>
<b>GNR 327</b>	<b>Part 38</b>	<i>The expansion and related operation of facilities for the slaughter of animals where the daily product throughput will be increased by more than - ... (ii) 6 units of reptile...</i>
<b>GNR 327</b>	<b>Part 39</b>	<i>The expansion and related operation of facilities for the concentration of animals in densities that will exceed iii) 30 square metres per crocodile where the expansion will constitute an additional 20 crocodiles or more...</i>
<b>GNR 327</b>	<b>Part 43</b>	<i>The expansion and related operation of hatcheries or agri-industrial facilities outside industrial complexes, where the development footprint of the hatcheries or agri-industrial facilities will be increased by 2 000 square metres or more.</i>
<b>GNR 327</b>	<b>Part 48</b>	<i>The expansion of i) infrastructure or structures where the physical footprint is expanded by 100 square metres or more; where such expansion occurs a) within a watercourse... c) within 32 metres of a watercourse, measured from the edge of a watercourse...</i>

The Applicant has appointed Green Door Environmental as the independent Environmental Assessment Practitioners (EAPs) to conduct the necessary Basic Assessment Process.



## **WHAT IS PROPOSED?**

The Applicant, Kelmark Trading CC, wishes to apply for Environmental Authorisation and for the expansion of an existing crocodile abattoir and the establishment of a fish farm on Riverview Farm, located on Portion 24 of the Farm Wagenbeetjes Draai No. 875, Albert Falls, KwaZulu-Natal. Refer to Figure 2 for a map showing showing the existing infrastructure on the farm.

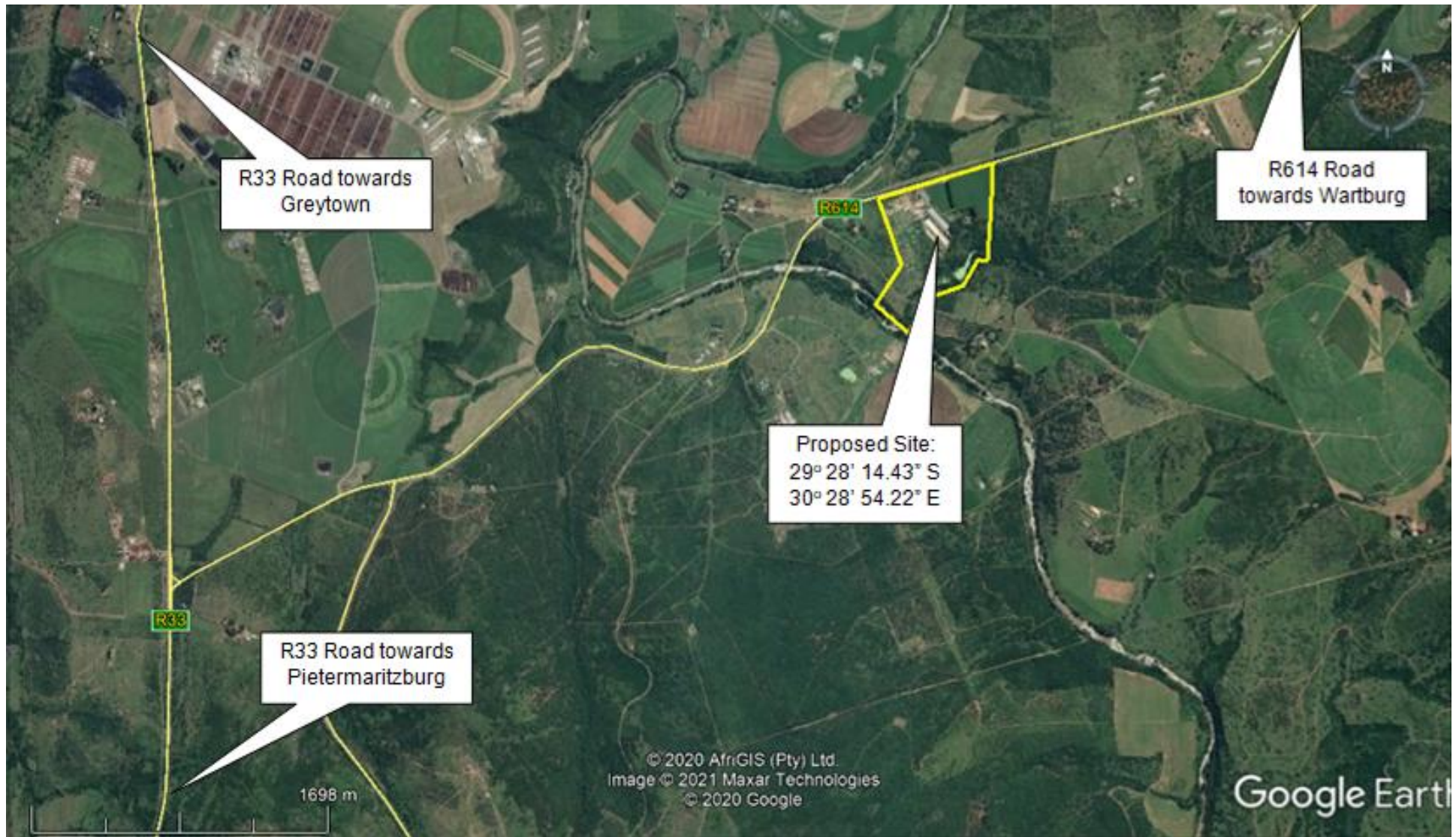
The current crocodile abattoir has be in existence since 1989, however the Applicant now wishes to apply for the highest category slaughter permit which allows for more than 40 animals to be slaughtered per day. The abattoir facility currently operates for two weeks out of every six weeks, and 30 animals are slaughtered everyday during this two week period. This equates to the current slaughtering of approximately 3000 animals per annum. The Applicant wishes to operate six days a week with one day per week being dedicated to maintenance.

The Applicant wishes to establish a fish farm through the use of some of the existing ponds on the property. The numbers of fish and the exact ponds to be used is currently being investigated, but will be reported on in detail in the Basic Assessment Report.

The facility has an existing effluent pond system on site. This current pond system will be assessed and upgraded / amended if required to cater for the proposed project as part of this application.



## WHERE IS THE PROPOSED PROJECT?



**Figure 1:** Locality map (Source: Google Earth).



**Figure 2:** Map showing existing infrastructure on the farm (Source: Google Earth).



## **WHAT IS THE AIM OF BASIC ASSESSMENT PROCESS?**

---

The Basic Assessment Process aims to:

- ◆ Inform and involve all potentially I&APs of the proposed project;
- ◆ Identify the potential impacts (positive and negative) that the proposed project may have on the ecological and socio-economic environment;
- ◆ Provide recommendations based on the identified impacts and conduct further specialist studies if necessary; and
- ◆ Provide the Department of Economic Development, Tourism and Environmental Affairs (DEDTEA) with enough information to make an informed decision regarding the proposed project.



## **WHAT IS INVOLVED IN THE EIA PROCESS FOR BASIC ASSESSMENT?**

---

The Basic Assessment Process can be described as follows:

1. Application Form:

An official Application Form is required to be completed and submitted to the Competent Authority. This Form provides information on the property, a description of the activities at the facility and lists the relevant listed activities which are triggered.

2. Public Participation:

The general public and relevant authorities are notified of the proposed project through newspaper adverts, site notices and direct consultation. Alternative methods will be employed to inform those I&APs who may be illiterate, disabled or otherwise disadvantaged. Should you be aware of anyone who might be interested in this project, but has not been notified, please send the relevant contact details to Green Door Environmental. This Background Information Document will be circulated to neighbouring landowners, relevant authorities and any other persons registered as I&APs following the newspaper adverts and site notices.

3. Identification of Impacts and Alternatives

Environmental issues, concerns, development constraints and possible development alternatives will be identified using professional judgement, project information, experience of similar projects, a review of available literature, site visits, and consultation with authorities and the public.

4. Impact Evaluation

The significance of environmental issues will be evaluated in terms of their expected extent, intensity, duration and probability of occurrence.

5. Mitigation and Management Measures

Measures to manage and minimise impacts to within acceptable levels, as well as measures to maximise the socio-economic benefits associated with the development, will be identified and recorded in the Basic Assessment Report. An Environmental Management Programme (EMPr) will be compiled to facilitate the implementation of mitigation measures, if the proposed project is approved.

6. Reporting

The Basic Assessment Report and Draft EMPr will be made available for review and comment by all I&APs and relevant authorities. A Final Basic Assessment Report and EMPr will be compiled and will include comments received on the circulated Basic Assessment Report.

7. Authority Decision

The Final Basic Assessment Report will be used by DEDTEA as the basis for the decision on whether the proposed project should be approved or not. All I&APs will be informed of the decision.



## **WHAT POTENTIAL ENVIRONMENTAL IMPACTS HAVE INITIALLY BEEN IDENTIFIED?**

---

A project of this nature has the potential to cause the following environmental impacts. These impacts will be investigated and assessed as part of this application:

- ◆ Potential impact on water quality through the contamination of ground and surface water.
- ◆ Water availability.
- ◆ Potential impact of faunal and floral species.



## **HOW CAN I&APs COMMENT ON THIS PROJECT?**

---

The need for public input and involvement is of critical importance. All I&APs (neighbours, authorities, organisations etc.) are invited to comment on the proposed project. Comments can be communicated to us by post, telephone or email (contact details are provided below).

In order to ensure that your comments are addressed and incorporated, please ensure that we have received all comments by **22 February 2021**.

