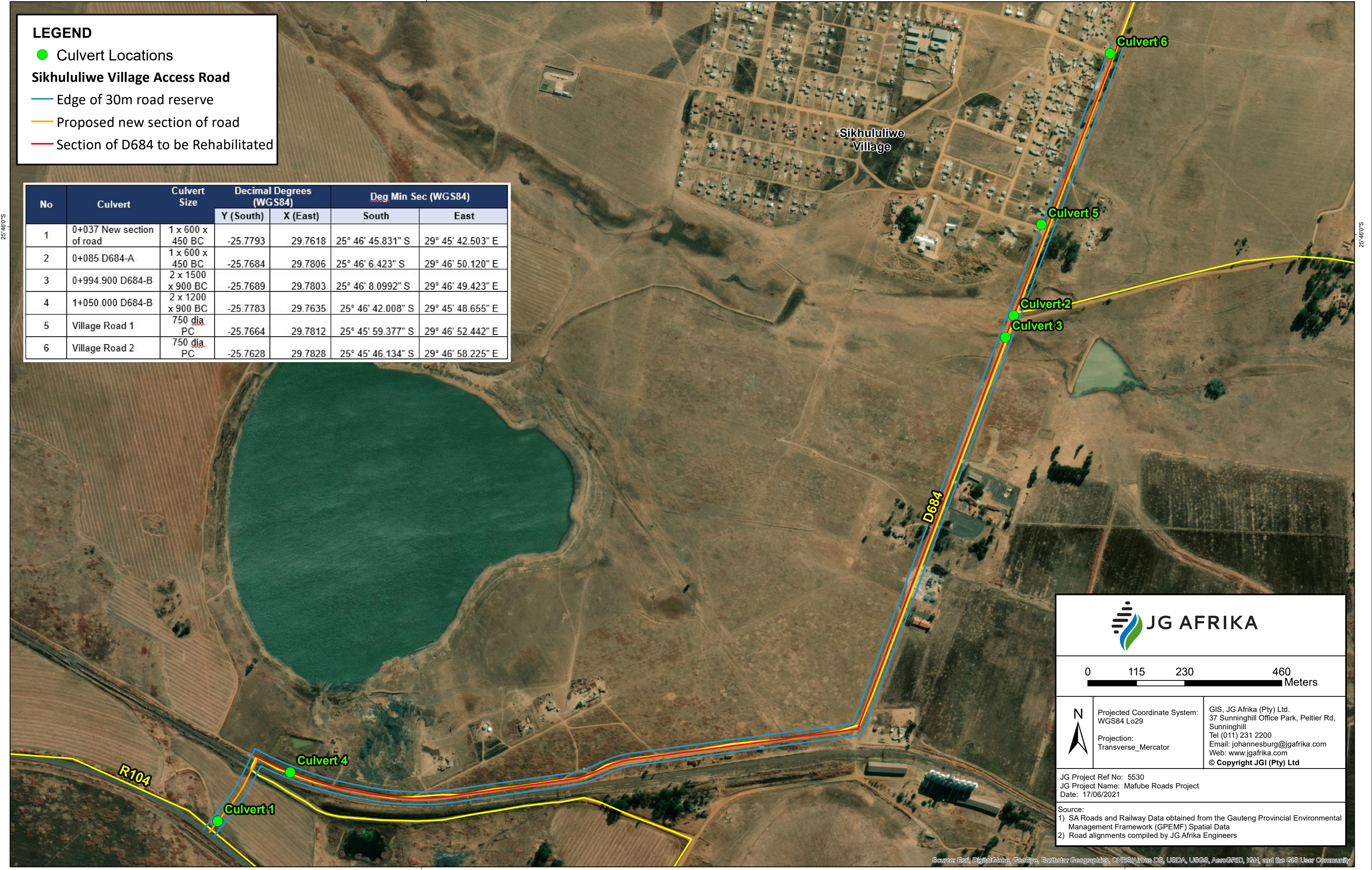


Sikhululiwe Village Acces Road Project: Culvert Locations

LEGEND

- Culvert Locations
- Sikhululiwe Village Access Road**
- Edge of 30m road reserve
- Proposed new section of road
- Section of D684 to be Rehabilitated

No	Culvert	Culvert Size	Decimal Degrees (WGS84)		Deg Min Sec (WGS84)	
			Y (South)	X (East)	South	East
1	0+037 New section of road	1 x 600 x 450 BC	-25.7793	29.7618	25° 46' 45.831" S	29° 45' 42.503" E
2	0+085 D684-A	1 x 600 x 450 BC	-25.7684	29.7806	25° 46' 6.423" S	29° 46' 50.120" E
3	0+994.900 D684-B	2 x 1500 x 900 BC	-25.7689	29.7803	25° 46' 8.0992" S	29° 46' 49.423" E
4	1+050.000 D684-B	2 x 1200 x 900 BC	-25.7783	29.7635	25° 46' 42.008" S	29° 45' 48.655" E
5	Village Road 1	750 dia PC	-25.7664	29.7812	25° 45' 59.377" S	29° 46' 52.442" E
6	Village Road 2	750 dia PC	-25.7628	29.7828	25° 45' 46.134" S	29° 46' 58.225" E



N ↑	Projected Coordinate System: WGS84 Lo29	GIS, JG Afrika (Pty) Ltd. 37 Sunninghill Office Park, Peltier Rd, Sunninghill Tel (011) 231 2200 Email: johannesburg@jgafrika.com Web: www.jgafrika.com © Copyright JGI (Pty) Ltd
	Projection: Transverse_Mercator	

JG Project Ref No: 5530
 JG Project Name: Mafube Roads Project
 Date: 17/06/2021

Source:
 1) SA Roads and Railway Data obtained from the Gauteng Provincial Environmental Management Framework (GPEMF) Spatial Data
 2) Road alignments compiled by JG Afrika Engineers

Source: Esri, DigitalGlobe, GeoEye, Earthstar Geographics, CNES/Airbus DS, USDA, USGS, AeroGRID, IGN, and the GIS User Community