

ONSITE NOTIFICATIONS
Notifications were placed onsite on 19 October 2021

Please note that, as per the approved Public Participation Plan, the following 5x projects were advertised simultaneously on these notices:

Vetlaagte farm

- A new 400kV Main Transmission Substation (MTS) and Loop in Loop Out lines (LILO) connecting the new MTS to an existing 400kV power line
- A Switching Station and a power line connecting PV1 & PV2 to the new MTS
- A Switching Station and a power line connecting PV3 & PV4 to the new MTS
- A Switching Station and a power line connecting PV5, PV6 & PV7 to the new MTS

Wag 'n Bietjie farm

- A new 400kV Main Transmission Substation (MTS) and Loop in Loop Out lines (LILO) connecting the new MTS to an existing 400kV power line as well as a power line connecting the Wag 'n Bietjie MTS with the Vetlaagte MTS.



At the northern fence of the Vetlaagte farm





At the southern entrance to the Vetlaagte farm in close proximity to the existing Hydra Main Transmission Substation



At the entrance to the Wag 'n Bietjie farm



NOTIFICATION OF APPLICATIONS FOR ENVIRONMENTAL AUTHORISATIONS

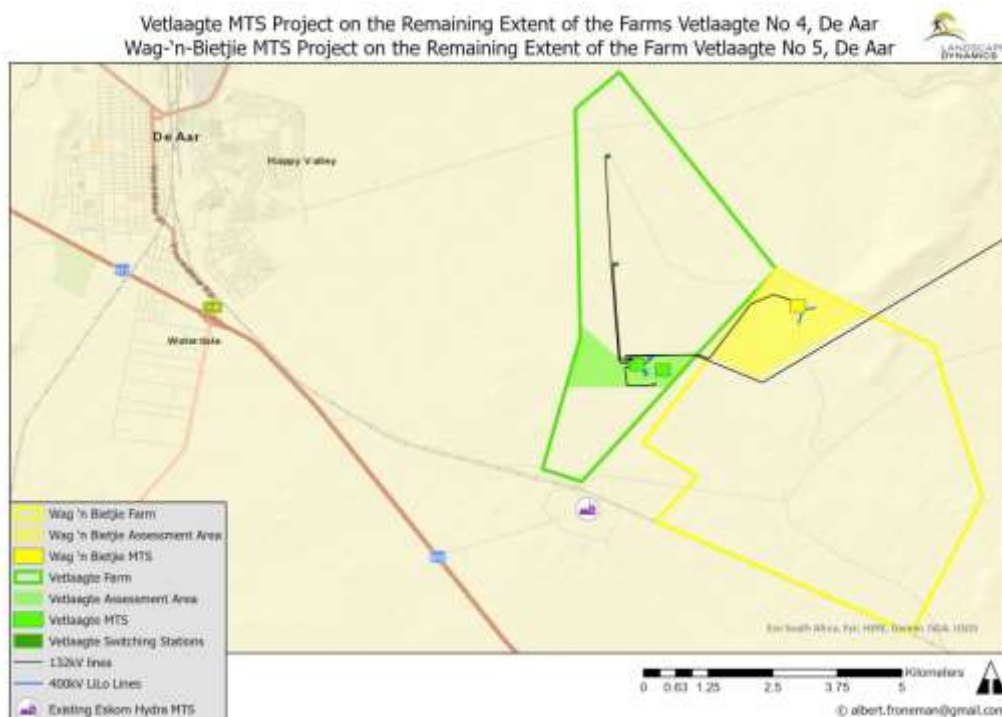
Notice is given in terms of the National Environmental Management Act (Act No 107 of 1998) and the 2014 EIA Regulations, as amended, that applications for Environmental Authorisation are made with the Department of Forestry, Fisheries and the Environment (DFFE) for the two projects as described below. The most obvious relevant listed activities which could be triggered are the following (this list will be finalised during the course of the study): Listing Notice 1, Activities 11 and 27 as well as Listing Notice 2, Activity 9 & 15. An EA Amendment process might also be required for the splitting of an approved grid connection on the Vetlaagte Project. The entire project area falls within the Central Strategic Environmental Corridor; therefore a Basic Assessment process will apply. The applications are currently made on behalf of Mulilo Renewable Project Developments (Pty) Ltd, but the applicants for the different applications will be confirmed in the Draft Basic Assessment Reports. Approval could also be required from the relevant authorities in terms of the National Heritage Resources Act, 1999 (Act No 25 Of 1999) and the National Water Act, 1998 (Act No 36 of 1998). The project areas are situated approximately 9km south-east of the town of De Aar in the Northern Cape Province.

The project components include the following (might be amended but will be communicated throughout the EIA process) :
Vetlaagte MTS Project on the Remaining Extent of the Farms Vetlaagte No 4, De Aar (assessment area is approximately 134 ha)

- Main Transmission Substation (MTS) on approximately 10 ha
- 3 X grid connection routes within a 200m wide corridor of approximately 0,25 km, 2,1 km and 4,1 km respectively
- 3 X Switching Stations on approximately 1ha each
- 2 X 400kV LiLo Lines of approximately 0,3 km + 0,2 km

Wag-'n-Bietjie MTS Project on the Remaining Extent of the Farm Vetlaagte No 5, De Aar (assessment area is approximately 257 ha)

- Wag-'n Bietjie Main Transmission Substation (MTS) on approximately 10 ha
- 2 X 400kV LiLo Lines of approximately 0,3km + 0,3km
- 1 X 400kV Overhead Powerline to connect with the Vetlaagte MTS of approximately 3,6km within a 200m wide corridor
- 2 X 400kV Lilos of approximately 0,3km + 0,3km.



Please confirm in writing if you want to be registered as an interested and/or affected party and if you have any concerns and/or objections regarding the project. Submit your name, contact information and interest to the environmental consultant within 30 days from the date of this notice.



Landscape Dynamics Environmental Consultants
Annelize Grobler: 082 566 4530 / Susanna Nel: 082 888 4060
info@landscapedynamics.co.za



Date of Placement of Advertisement: 19 October 2021