
Vetlaagte and Wag 'n Bietjie Electrical Infrastructure Projects

PUBLIC PARTICIPATION PROCESS

Notification of a Basic Environmental Impact Assessment

and

Request for Public Input



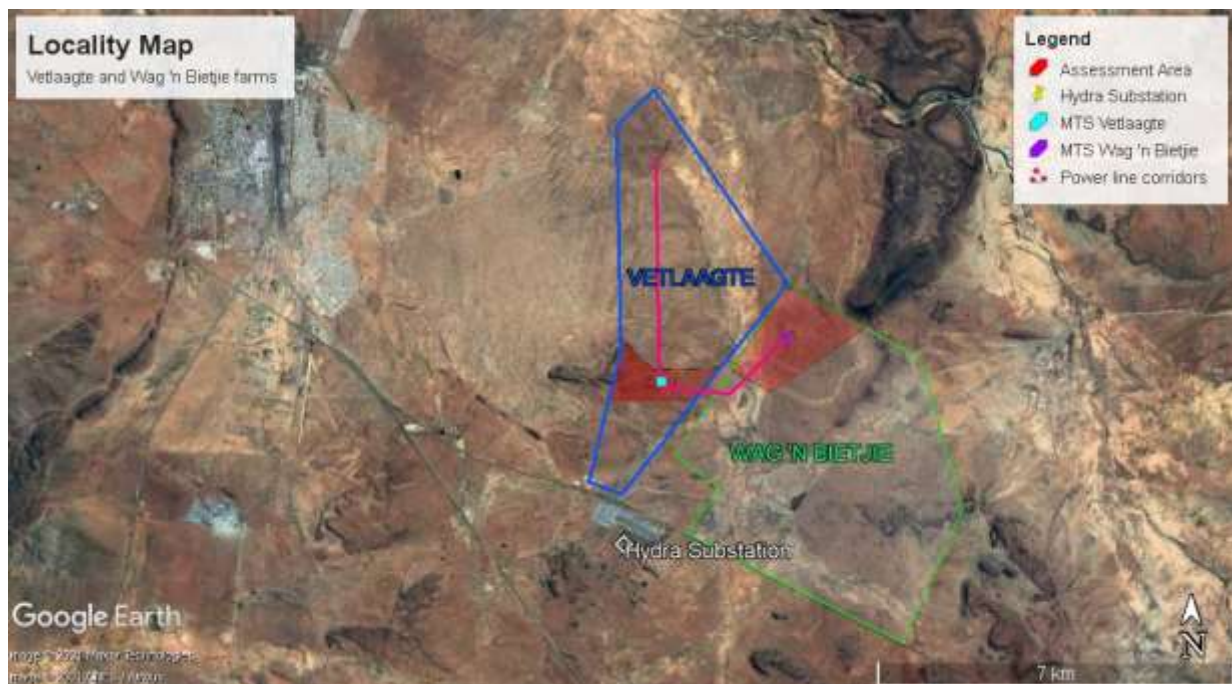
**LANDSCAPE
DYNAMICS**

BACKGROUND & LOCALITY

Landscape Dynamics Environmental Consultants was appointed by Mulilo Renewable Project Developments (Pty) Ltd to apply for Environmental Authorisation for the proposed **Vetlaagte and Wag 'n Bietjie Electrical Infrastructure Projects**. The Vetlaagte and Wag 'n Bietjie farms are situated approximately 5km to the east of De Aar in the Northern Cape Province.

The Consultants are undertaking the Basic Assessment process according to the Environmental Impact Assessment Regulations which came into effect in December 2014 and promulgated in terms of section 24(5) of the National Environmental Management Act, 1998 (Act No. 107 of 1998). Basis Assessments have to be undertaken in order to receive Environmental Authorisation and this Public Participation Programme forms part thereof.

The decision-making authority for these Basic Assessments is the National Department of Forestry, Fisheries and Environment (DFFE).



PURPOSE OF THIS DOCUMENT

The purpose of this document is to provide Interested & Affected Parties (IAPs) the opportunity to obtain background information with regards to the project and to comment on the development proposal. Contributions from the public forms an important part of the environmental process, which is to identify negative impacts that the project may have on the environment and to provide mitigation measures in order to avoid / reduce those impacts. Comment from IAPs can greatly assist in reaching the overall goals of the environmental assessment process.

PROJECT NAMES

Five different projects are being advertised in this document and five applications for environmental authorisations will be made.

1. Vetlaagte 400kV Main Transmission Substation (MTS)
2. Vetlaagte 132kV grid connection and switching station on PV2
3. Vetlaagte 132kV grid connection and switching station on PV4
4. Vetlaagte 132kV grid connection and switching station on PV7
5. Wag 'n Bietjie 400kV MTS and grid connection:

BACKGROUND TO THE STUDY

Vetlaagte farm

- There are at present 7x valid Environmental Authorisations (EAs) for 7x solar PV facilities on the Vetlaagte farm. The EAs were all issued on 19 July 2013 and are valid until on 19 July 2023.
- It is now required to receive environmental authorisation for the electrical infrastructure that will connect these solar PV farms to the Eskom national grid.

Wag 'n Bietjie farm

- Solar PV facilities on the Wag 'n Bietjie farm was previously approved but lapsed. Mulilo may apply for environmental authorisation for several solar PV facilities in the future.
- There is no EA approved grid connection infrastructure on the Wag 'n Bietjie farm.

PROJECT APPLICANTS

The applicants for the 5x different projects would be as follows (please note that the names of these applicants will be confirmed in the Draft BARs that will be distributed in due course):

- | | |
|--|----------------------------|
| 1. Vetlaagte 400kV Main Transmission Substations (MTS): | Vetlaagte MTS (Pty) Ltd |
| 2. Vetlaagte 132kV grid connection and switching station on PV2: | Ennex Solar (Pty) Ltd |
| 3. Vetlaagte 132kV grid connection and switching station on PV4: | Inqwaba Energy (Pty) Ltd |
| 4. Vetlaagte 132kV grid connection and switching station on PV7: | Lehlesedi Energy (Pty) Ltd |
| 5. Wag 'n Bietjie 400kV MTS and grid connection: | TBA |

BASIC ASSESSMENT: LISTED ACTIVITIES

Government Notice R327 (Listing Notice 1), R325 (Listing Notice 2) and GN R326 Listing Notice 3 are applicable. Listing Notice 2 normally calls for a full Scoping and EIA process to be followed but these projects fall within a Strategic Transmission Corridor and therefore Basic Assessments have to be undertaken. The listed activities for which environmental authorisation could be required, are:

Listing Notice 1

- Nr 11: The distribution of electricity outside urban areas
- Nr 27: The clearance of an area of 1 hectare or more of indigenous vegetation
- Nr 28: Industrial development outside an urban area

Listing Notice 2

- Nr 11: Electrical infrastructure of more than 275kV outside urban areas

Listing Notice 3

- Nr 4: The development of a road wider than 4 metres
- Nr 12: The clearance of an area of 300m² or more of indigenous vegetation

Please note that, as more detail about the projects becomes available and specialist studies are completed, further listed activities might be added / deleted to those mentioned above

Note that authorisation could also be required in terms of the National Water Act (Act Nr 36 of 1998) (Section 21(c) and (i) as well as the National Heritage Resources Act (Act Nr 25 of 1999).

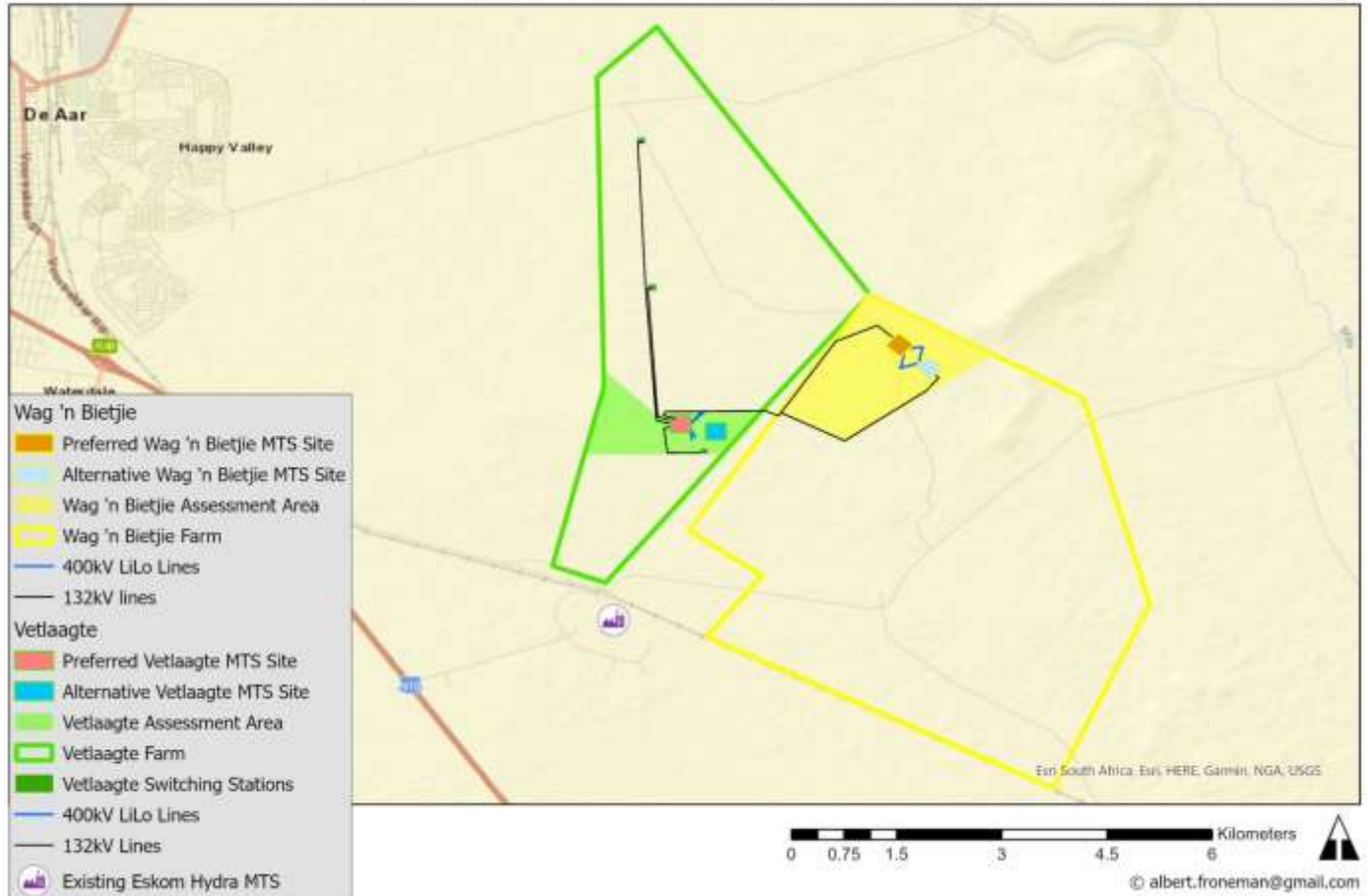
PROJECT DESCRIPTION

PROJECT DESCRIPTION

This document advertises five projects and five applications for environmental authorisations will be made. The electrical infrastructure required in totality is as follows:

- *Vetlaagte*
 - A new 400kV Main Transmission Substation (MTS)
 - Loop in Loop Out lines (LILO) connecting the new MTS to an existing 400kV power line
 - A Switching Station and a 132kV power line on PV2
 - A Switching Station and a 132kV power line on PV4
 - A Switching Station and a 132kV power line on PV7
 - A 200m corridor for the power line will be investigated and requested for approval in the EA
- *Wag 'n Bietjie*
 - A 400kV Main Transmission Substation (MTS)
 - Loop in Loop Out (LILO) lines connecting the new MTS to an existing 400kV power line
 - A 132kV power line that connect the Wag 'n Bietjie MTS and the Vetlaagte MTS
 - A 200m corridor for the power line will be investigated and requested for approval in the EA

Vetlaagte MTS Project on a Portion of the Remaining Extent of the Farms Vetlaagte No 4, De Aar
Wag-'n-Bietjie MTS Project on a Portion of the Remaining Extent of the Farm Wagt en Bittje No 5, De Aar



SPECIALIST STUDIES

The following specialist studies are being undertaken as part of these Basic Assessment processes:

- Fauna & Flora Impact Assessment
- Aquatic Impact Assessment
- Bird Impact Assessment
- Heritage Impact Assessment

PUBLIC PARTICIPATION

COMMENT ON THE DEVELOPMENT PROPOSAL & REGISTRATION AS AN IAP

Should you wish to comment on this development proposal, your comment should reach us on or before **30 days (excluding public holidays)** from the date of this notice. Your comment should be in writing and can be submitted via email, fax or post. In order to be registered as an IAP, your contact details should also be provided.

Registered IAPs will be included in our database which will ensure that you are directly informed of any important dates, availability of documents, etc.

Your initial input would be much appreciated so that your concerns can be addressed as early as possible during the assessment process.

Please do extend this invitation to comment to others whom you believe may also be affected by, or would be interested in, by any of these 5x projects.

PLEASE NOTE

Clearly indicate to which of the 5x projects you are referring to when comment is provided

DRAFT BASIC ASSESSMENT REPORT (Draft Environmental Management Plan included)

The Draft Basic Assessment Reports (Draft BARs) would be compiled after the completion of the specialist studies and will contain detail about the project, the need and desirability of the project, specialist studies and other relevant information.

All comment / objections received up to this date will be addressed in the Draft BAR. This document will be made available for public input.

FINAL BASIC ASSESSMENT REPORT (Final Environmental Management Plan included)

The Final BAR will contain the comment received on the Draft BAR, the consultants' responses thereto as well as any amendments that came about as a result of these comments. The Final BAR will be submitted to the National Department of Forestry, Fisheries and Environment for their perusal, comment and ultimately, the issuing of environmental authorisation for these projects.

DATE OF NOTICE

This notice is being distributed via email. Please see the date on which the email was sent as the date of this notice.

CONTACT DETAIL

Pretoria Office (Manager: Annelize Grobler)

91 Wenning Street, Groenkloof, Pretoria, 01816

PO Box 947, Groenkloof, Pretoria, 0027

Tel: 012 460 6043

Cell: 082 566 4530

Fax: 012 346 2356

Email: info@landscapedynamics.co.za

Cape Town Office (Manager: Susanna Nel)

3 Palomino Close, Die Wingerd, Somerset West, 7130

Tel: 021 855 0912

Cell: 082 888 4060

Email: info@landscapedynamics.co.za
