



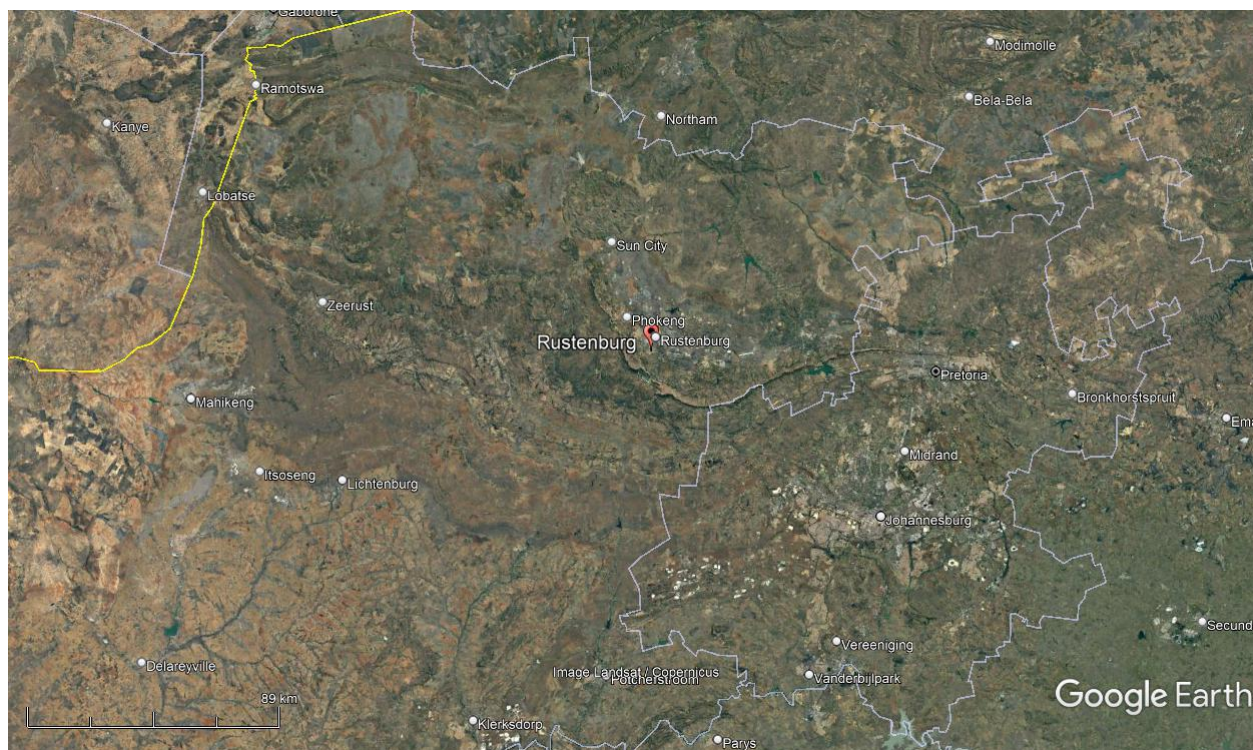
24 May 2022

To whom it may concern

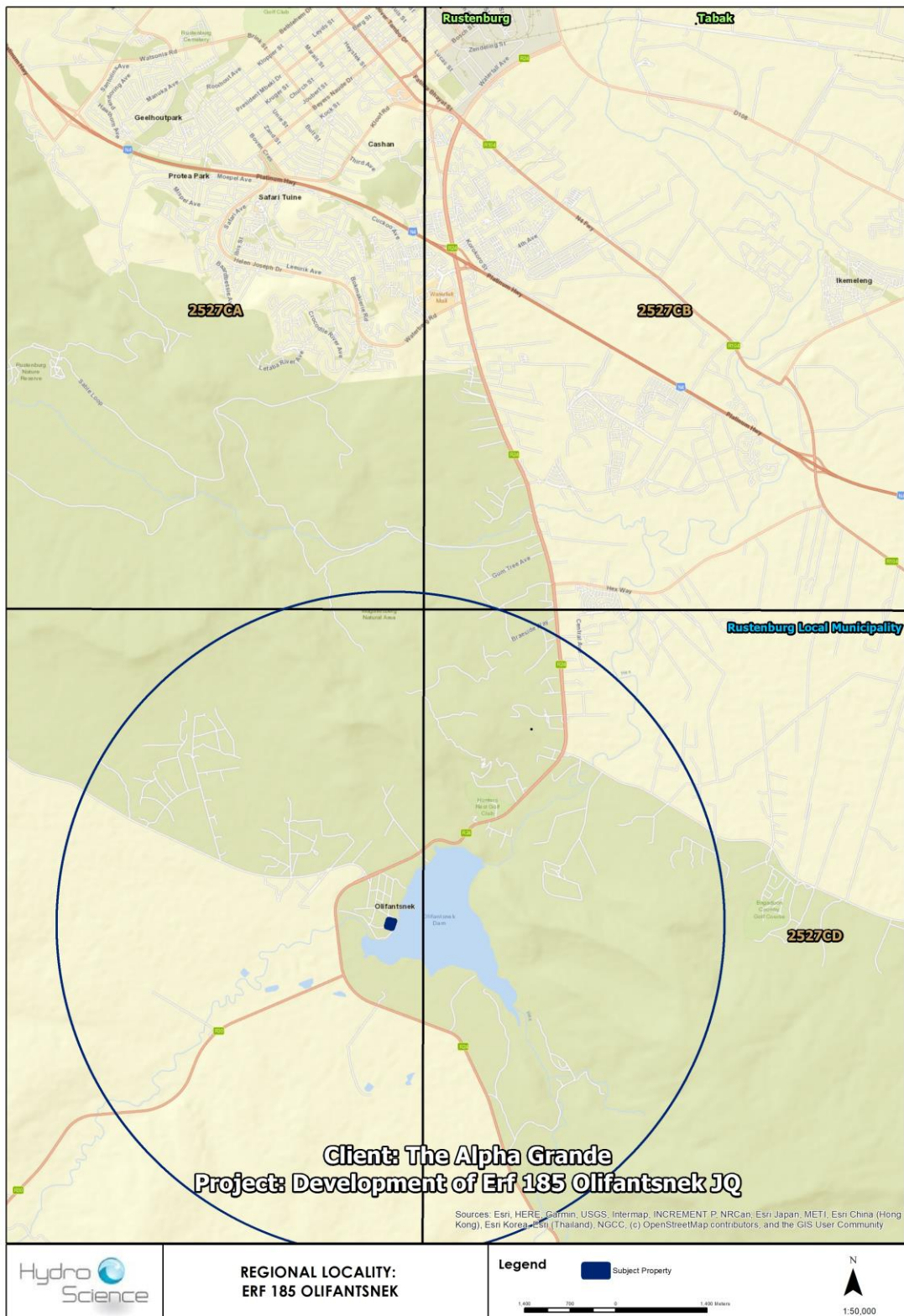
**LETTER FOR HIA EXEMPTION REQUEST: PROPOSED VEGETATION CLEARANCE (ACTIVITY 12 OF LISTING 3) AND DEVELOPMENT OF SELF-STANDING UNITS AND GUEST LODGE (ACTIVITY 6 OF LISTING 3) WITH ASSOCIATED ROADS (ACTIVITY 4 OF LISTING 3) ON ERF 185 OLIFANTSNEK JQ, RUSTENBURG LOCAL MUNICIPALITY, BOJANALA PLATINUM DISTRICT MUNICIPALITY, NORTH WEST PROVINCE.**

The above-mentioned project refers. The project site is located on Erf 185 of the farm Olifantsnek JQ (Figure 1-3). The project consists of the following activities:

- 9 398m<sup>2</sup> will be cleared of vegetation to allow for the development with associated roads
- Five (5) self-standing units will be developed on 5 398m<sup>2</sup> thereof
- 20 guest lodge units will be developed on the remaining 4 000m<sup>2</sup> (Figure 4).

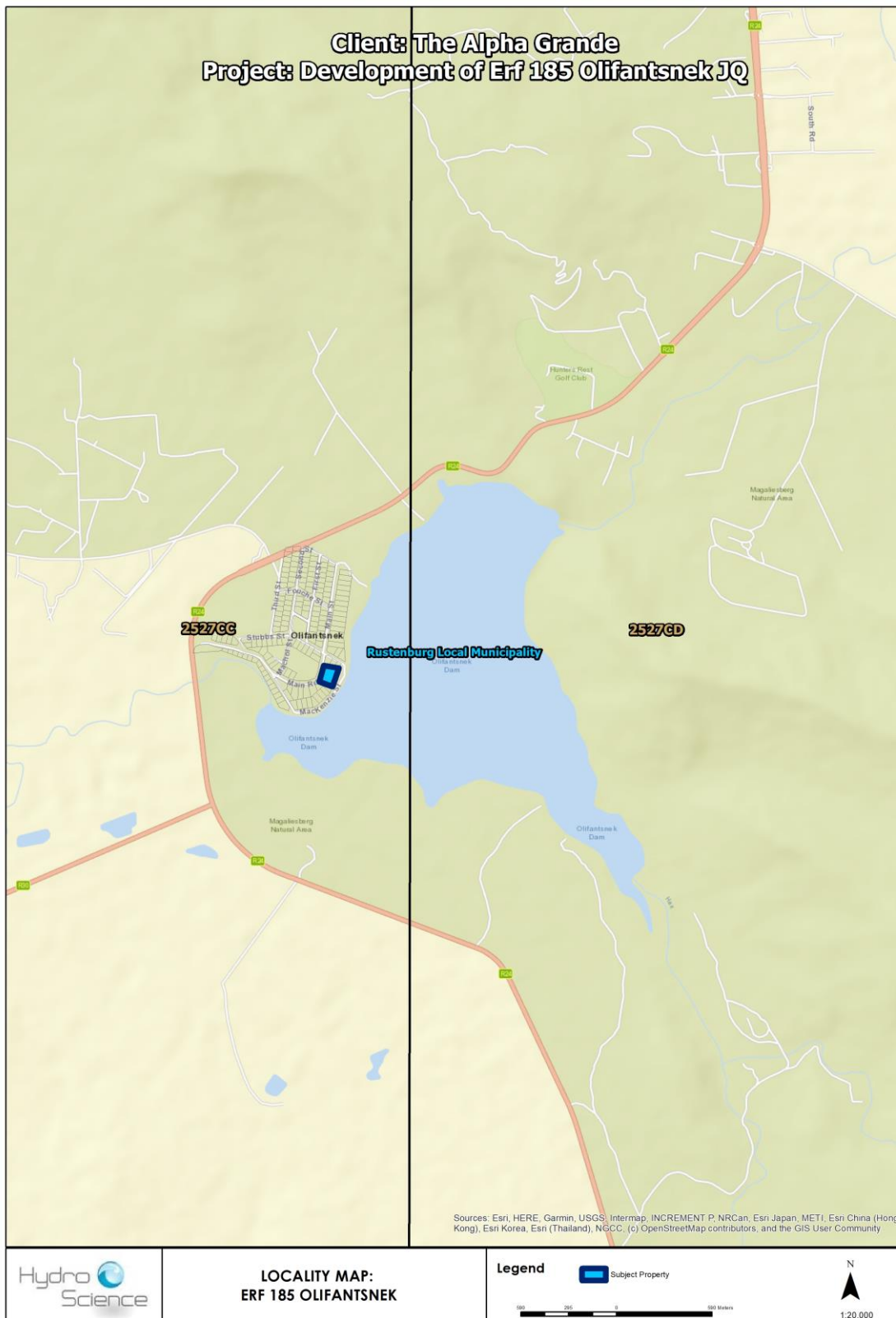


**Figure 1: Location of Rustenburg in the North West Province.**

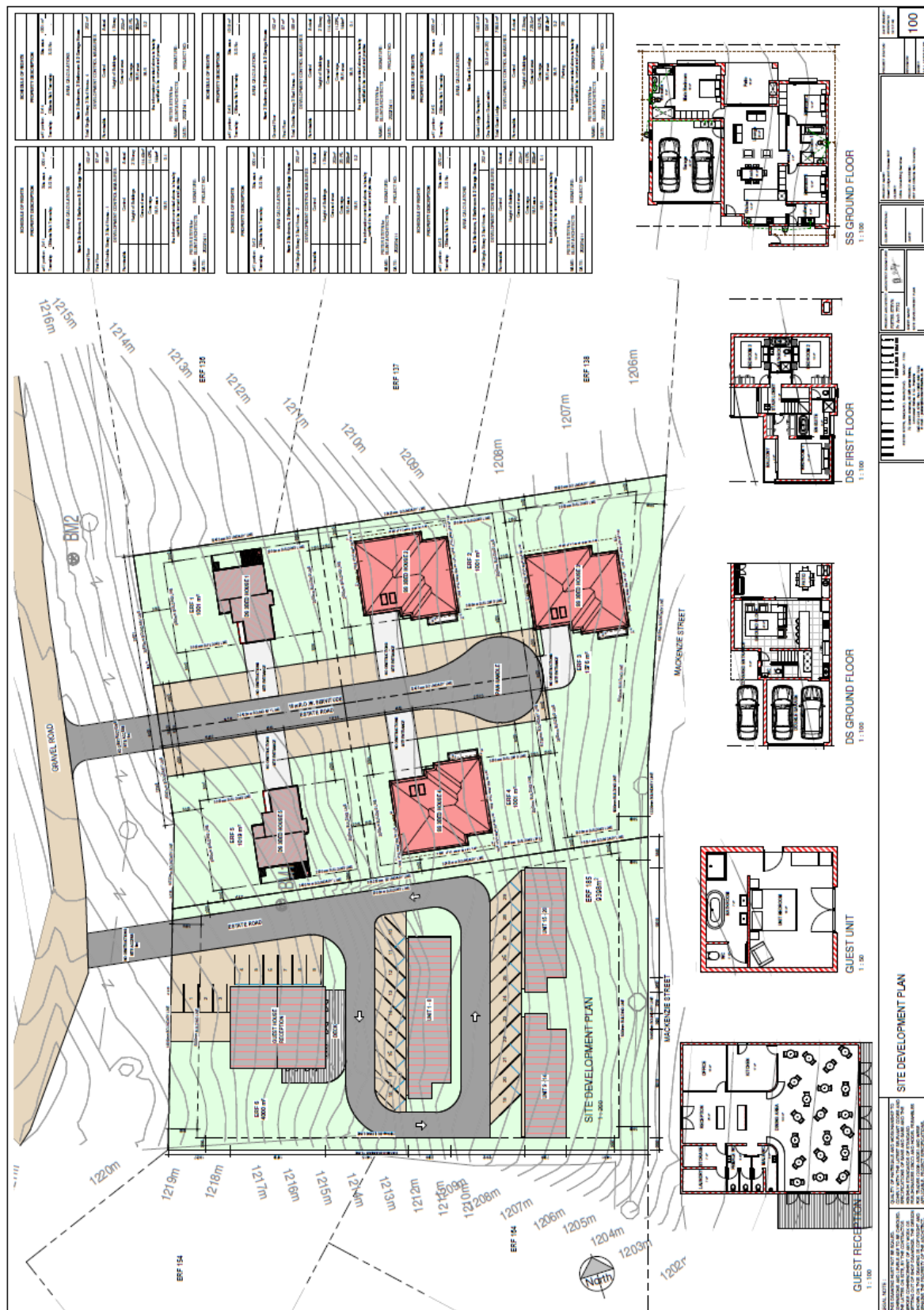


**Figure 2: Regional Locality (Hydro Science).**





**Figure 3: Local locality of the site (Hydro Science).**



A HIA must be done under the following circumstances:

- a. The construction of a linear development (road, wall, power line, canal etc.) exceeding 300m in length.
- b. The construction of a bridge or similar structure exceeding 50m in length
- c. **Any development or other activity that will change the character of a site and exceed 5 000m<sup>2</sup> or involve three or more existing erven or subdivisions thereof.**
- d. Re-zoning of a site exceeding 10 000 m<sup>2</sup>.
- e. Any other category provided for in the regulations of SAHRA or a provincial heritage authority.

The site was studied via Google Earth images (Figure 5) and photographs provided by the client (please see attached). It is my opinion that the project may be exempted from doing a Heritage Impact Assessment (HIA). The following is applicable:

- The site has been disturbed to a large extent.
- Vegetation mainly consisting of grass and pioneer species such as weeds, with only a few trees.
- The site is in an urban setting and next to a large dam (east).
- There are no buildings on site.
- Buildings towards the north are younger than 60 years of age.
- A desktop palaeontological study was undertaken, indicating that the area is low risk from this point of view.<sup>1</sup>

In light of these factors, the chances of finding any heritage related features are indeed extremely slim, if any. This letter serves as an exemption request to the relevant heritage authority.

The developer should, however, note that due to the nature of archaeological material, such sites, objects or features, as well as graves and burials may be uncovered during construction activities on site. In such a case, work should cease immediately and an archaeologist should be contacted as a matter of urgency to assess such occurrences.

---

<sup>1</sup> JF Durand, **Development on Erf 185 Olifantsnek, south of Rustenburg, Northwest Province. Desktop Study Palaeontology** (Unpublished report, 2022).



**Figure 5: Google Earth image indicating the site.**

**Recommendation:**

**That the development be exempted from doing an HIA.**

I trust that you will find this in order.

Yours faithfully

A handwritten signature in black ink, appearing to read 'Prof AC van Vollenhoven', written over a light-colored, textured background.

Prof AC van Vollenhoven: Director

**Appendix - Site photographs**