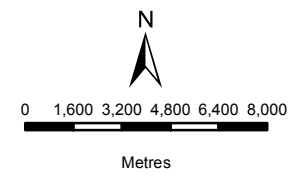


BIOTHERM ENERGY (PTY) LTD
 REGIONAL MAP
 MARALLA EAST

- Legend**
- Non-Perrenial Rivers
 - Regional Road
 - Powerlines
 - Maralla East Wind Facility
 - NFEPA Wetlands
- CBA Terrestrial**
- CBA Type**
- ESA_T
 - T1
 - T2
- CBA & ESA CentralKaroo**
- CBA Category**
- CBA
 - CBA (known agric landuse)
 - ESA



DATA SOURCE:
 CHIEF DIRECTORATE: NATIONAL GEO-SPATIAL INFORMATION
 NFEPA, SANBI

PROJECTION: WGS HARTEBEESHOEK 94

PROJECT TITLE: WIND AND SOLAR RENEWABLES

PROJECT NO: 47579

SCALE: 1:250,000 AT A4 DATE: 30/01/2017

DRAWN BY: SABELO DUBE FIGURE NO:

REVIEWED BY: ASHLEA STRONG

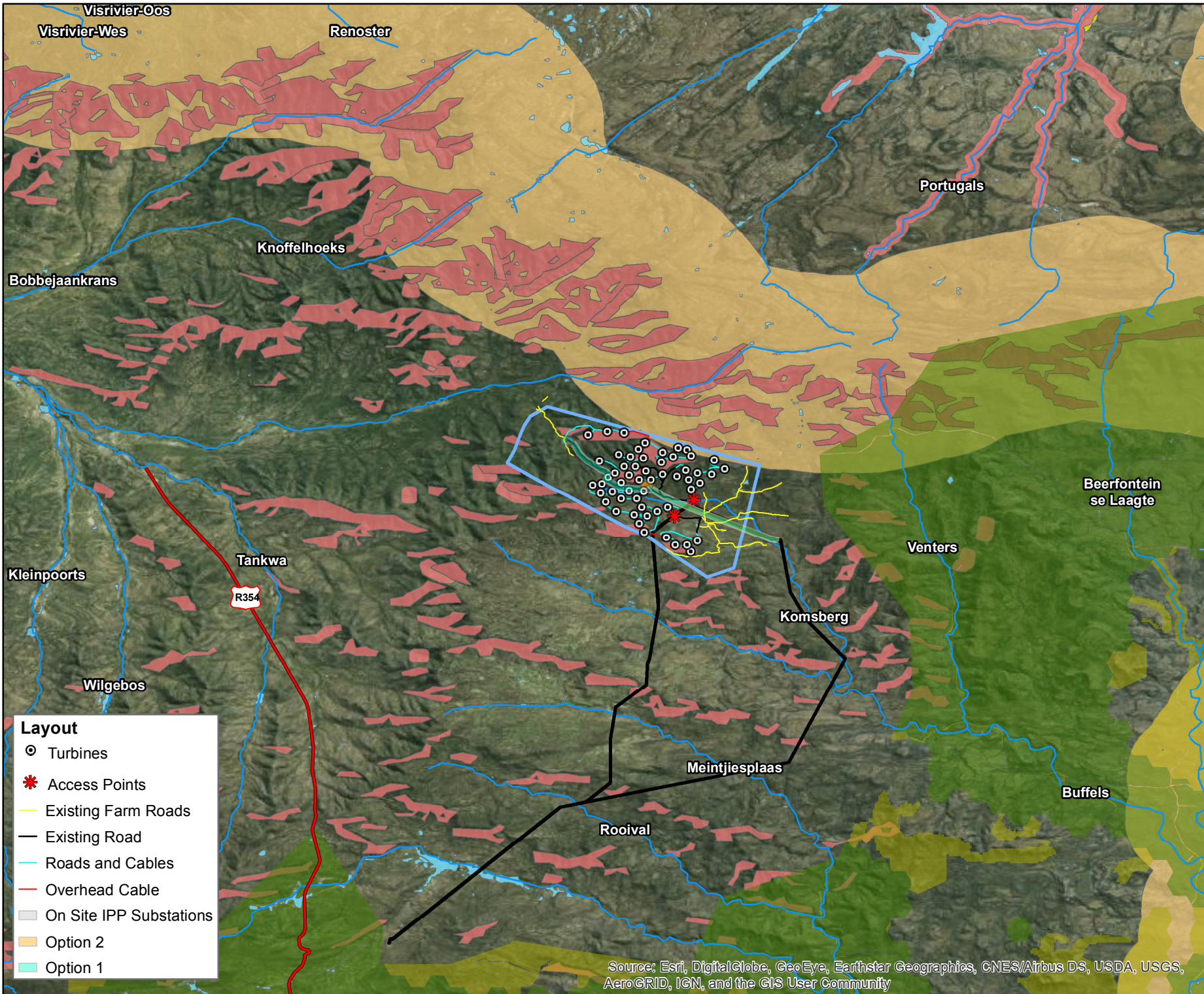
- Layout**
- Turbines
 - ★ Access Points
 - Exsiting Road
 - Roads and Cables
 - Overhead Cable
 - Exsiting Farm Road
 - OM Building 1 Pref
 - Option 1 Pref
 - Option 2
 - Option A
 - Option B

Source: Esri, DigitalGlobe, GeoEye, Earthstar Geographics, CNES/Airbus DS, USDA, USGS, AeroGRID, IGN, and the GIS User Community



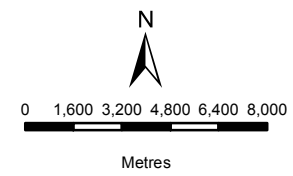
DISCLAIMER

The information on this figure was derived from various digital databases available to WSP Environmental (Pty) Ltd. All information is provided "as is" and it must be acknowledged that data, information, and maps are dynamic and in a constant state of maintenance, correction and update. WSP Environmental (Pty) Ltd cannot accept any responsibility for errors, omissions, or positional accuracy where it has not been directly responsible for the production of the data referenced. There are no warranties, expressed or implied, as to the use of this information, including the warranty of merchantability or fitness for a particular purpose. Notification of any errors will be appreciated.



BIOTHERM ENERGY (PTY) LTD
 REGIONAL MAP
 MARALLA WEST

- Legend**
- Non-Perennial Rivers
 - Regional Road
 - Powerlines
 - ▭ Maralla West Wind Facility
 - ▭ NFEPA Wetlands
- CBA Terrestrial**
- CBA Type**
- ▭ ESA_T
 - ▭ T1
 - ▭ T2
- CBA & ESA CentralKaroo**
- CBA Category**
- ▭ CBA
 - ▭ CBA (known agric landuse)
 - ▭ ESA



DATA SOURCE:
 CHIEF DIRECTORATE: NATIONAL GEO-SPATIAL INFORMATION
 NFEPA, SANBI

PROJECTION: WGS HARTBEESHOEK 94

PROJECT TITLE: WIND AND SOLAR RENEWABLES

PROJECT NO: 47579

SCALE: 1:250,000 AT A4 DATE: 30/01/2017

DRAWN BY: SABELO DUBE FIGURE NO:

REVIEWED BY: ASHLEA STRONG

- Layout**
- ⊙ Turbines
 - * Access Points
 - Existing Farm Roads
 - Existing Road
 - Roads and Cables
 - Overhead Cable
 - ▭ On Site IPP Substations
 - ▭ Option 2
 - ▭ Option 1



DISCLAIMER

The information on this figure was derived from various digital databases available to WSP Environmental (Pty) Ltd. All information is provided 'as is' and it must be acknowledged that data, information, and maps are dynamic and in a constant state of maintenance, correction and update. WSP Environmental (Pty) Ltd cannot accept any responsibility for errors, omissions, or positional accuracy where it has not been directly responsible for the production of the data referenced. There are no warranties, expressed or implied, as to the use of this information, including the warranty of merchantability or fitness for a particular purpose. Notification of any errors will be appreciated.

Source: Esri, DigitalGlobe, GeoEye, Earthstar Geographics, CNES/Airbus DS, USDA, USGS, AeroGRID, IGN, and the GIS User Community