

**SCREENING REPORT FOR AN ENVIRONMENTAL AUTHORIZATION AS
REQUIRED BY THE 2014 EIA REGULATIONS – PROPOSED DEVELOPMENT
FOOTPRINT ENVIRONMENTAL SENSITIVITY**

EIA Reference number:

Project name: Grootdraai 429 KS et al

Project title: Grootdraai 429 KS et al Prospecting

Date screening report generated: 28/07/2023 00:24:03

Applicant: Ndlovu Resources (Pty) Ltd

Compiler: Desmond Phaladi

Compiler signature:

.....

Application Category: Mining|Prospecting rights

Table of Contents

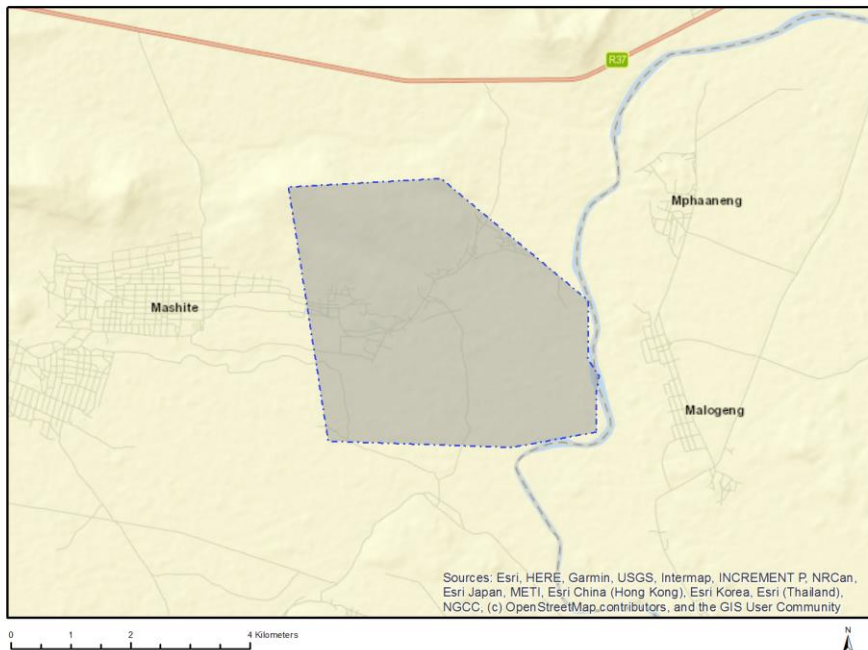
Proposed Project Location	3
Orientation map 1: General location	3
Map of proposed site and relevant area(s)	4
Cadastral details of the proposed site	4
Wind and Solar developments with an approved Environmental Authorisation or applications under consideration within 30 km of the proposed area	5
Environmental Management Frameworks relevant to the application	5
Environmental screening results and assessment outcomes	5
Relevant development incentives, restrictions, exclusions or prohibitions	6
Proposed Development Area Environmental Sensitivity	6
Specialist assessments identified	6
Results of the environmental sensitivity of the proposed area	8
MAP OF RELATIVE AGRICULTURE THEME SENSITIVITY	8
MAP OF RELATIVE ANIMAL SPECIES THEME SENSITIVITY	9
MAP OF RELATIVE AQUATIC BIODIVERSITY THEME SENSITIVITY	10
MAP OF RELATIVE ARCHAEOLOGICAL AND CULTURAL HERITAGE THEME SENSITIVITY	11
MAP OF RELATIVE CIVIL AVIATION THEME SENSITIVITY	12
MAP OF RELATIVE DEFENCE THEME SENSITIVITY	13
MAP OF RELATIVE PALEONTOLOGY THEME SENSITIVITY	14
MAP OF RELATIVE PLANT SPECIES THEME SENSITIVITY	15
MAP OF RELATIVE TERRESTRIAL BIODIVERSITY THEME SENSITIVITY	16

Proposed Project Location

Orientation map 1: General location



Map of proposed site and relevant area(s)



Cadastral details of the proposed site

Property details:

No	Farm Name	Farm/ Erf No	Portion	Latitude	Longitude	Property Type
1	TABAKPLAATS	432	0	24°18'32.56S	29°43'34.6E	Farm
2	GROOTDRAAI	429	0	24°18'41.61S	29°44'48.97E	Farm
3	TABAKPLAATS	432	3	24°18'48.72S	29°43'22.9E	Farm Portion
4	GROOTDRAAI	429	0	24°18'41.61S	29°44'48.97E	Farm Portion
5	TABAKPLAATS	432	0	24°18'32.56S	29°43'34.6E	Farm Portion
6	TABAKPLAATS	432	4	24°18'44.79S	29°43'34.46E	Farm Portion

Development footprint¹ vertices:

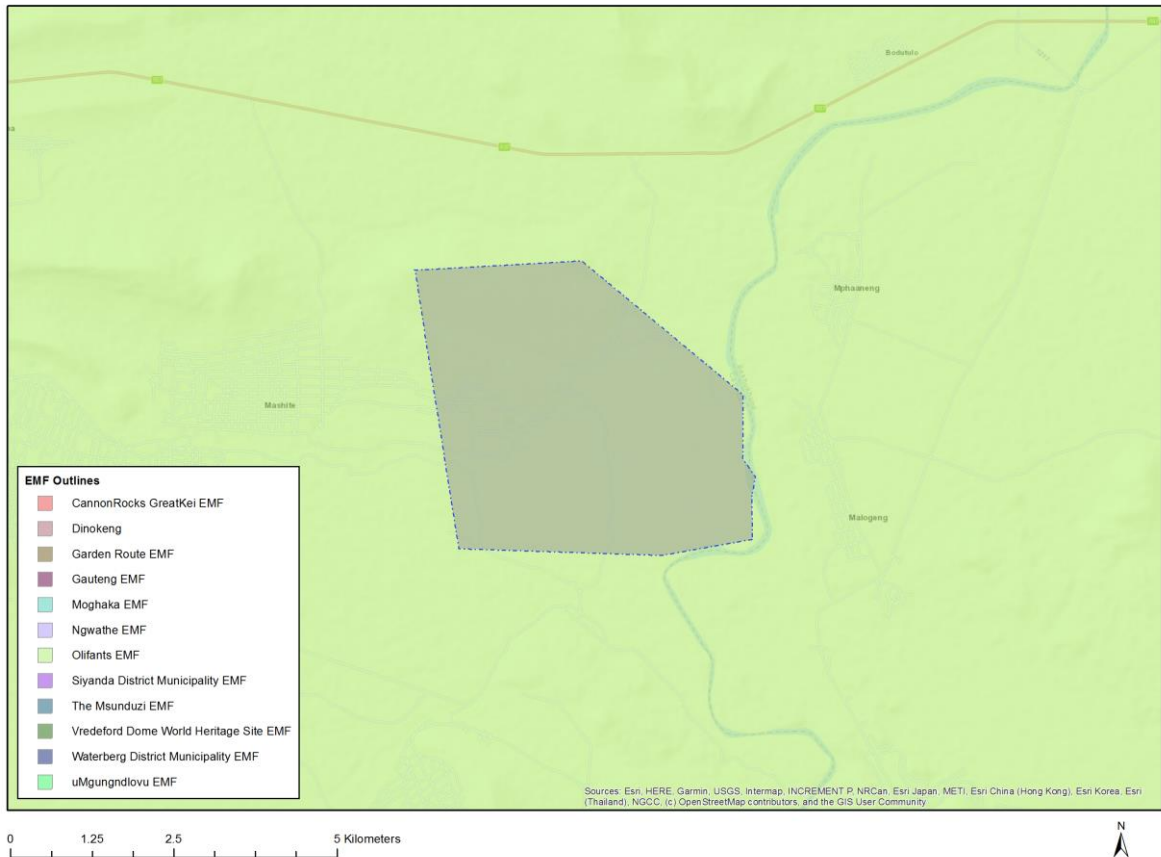
Footprint	Latitude	Longitude
1	24°17'28.41S	29°42'37.14E
1	24°17'24.1S	29°43'59.5E
1	24°18'24.59S	29°45'19.67E
1	24°18'53.31S	29°45'19.47E
1	24°19'1.51S	29°45'25.61E
1	24°19'9.93S	29°45'24.03E
1	24°19'29.93S	29°45'24.46E
1	24°19'37.12S	29°44'40.03E
1	24°19'34S	29°42'58.68E
1	24°17'28.41S	29°42'37.14E

¹ “development footprint”, means the area within the site on which the development will take place and includes all ancillary developments for example roads, power lines, boundary walls, paving etc. which require vegetation clearance or which will be disturbed and for which the application has been submitted.

Wind and Solar developments with an approved Environmental Authorisation or applications under consideration within 30 km of the proposed area

No nearby wind or solar developments found.

Environmental Management Frameworks relevant to the application



Environmental Management Framework	LINK
Olifants EMF	https://screening.environment.gov.za/ScreeningDownloads/EMF/Zone_4_6, 67, 78, 80, 92, 103, 122, 129.pdf

Environmental screening results and assessment outcomes

The following sections contain a summary of any development incentives, restrictions, exclusions or prohibitions that apply to the proposed development footprint as well as the most environmental sensitive features on the footprint based on the footprint sensitivity screening results for the application classification that was selected. The application classification selected for this report is:

Mining | Prospecting rights.

Relevant development incentives, restrictions, exclusions or prohibitions

The following development incentives, restrictions, exclusions or prohibitions and their implications that apply to this footprint are indicated below.

Incentive, restriction or prohibition	Implication
Strategic Transmission Corridor-International corridor	https://screening.environment.gov.za/ScreeningDownloads/DevelopmentZones/Combined_EGI.pdf
South African Conservation Areas	https://screening.environment.gov.za/ScreeningDownloads/DevelopmentZones/SACAD_OR_2023_Q1_Metadata.pdf

Proposed Development Area Environmental Sensitivity

The following summary of the development footprint environmental sensitivities is identified. Only the highest environmental sensitivity is indicated. The footprint environmental sensitivities for the proposed development footprint as identified, are indicative only and must be verified on site by a suitably qualified person before the specialist assessments identified below can be confirmed.

Theme	Very High sensitivity	High sensitivity	Medium sensitivity	Low sensitivity
Agriculture Theme		X		
Animal Species Theme			X	
Aquatic Biodiversity Theme	X			
Archaeological and Cultural Heritage Theme		X		
Civil Aviation Theme		X		
Defence Theme			X	
Paleontology Theme			X	
Plant Species Theme			X	
Terrestrial Biodiversity Theme	X			

Specialist assessments identified

Based on the selected classification, and the known impacts associated with the proposed development, the following list of specialist assessments have been identified for inclusion in the assessment report. It is the responsibility of the EAP to confirm this list and to motivate in the assessment report, the reason for not including any of the identified specialist study including the provision of photographic evidence of the footprint situation.

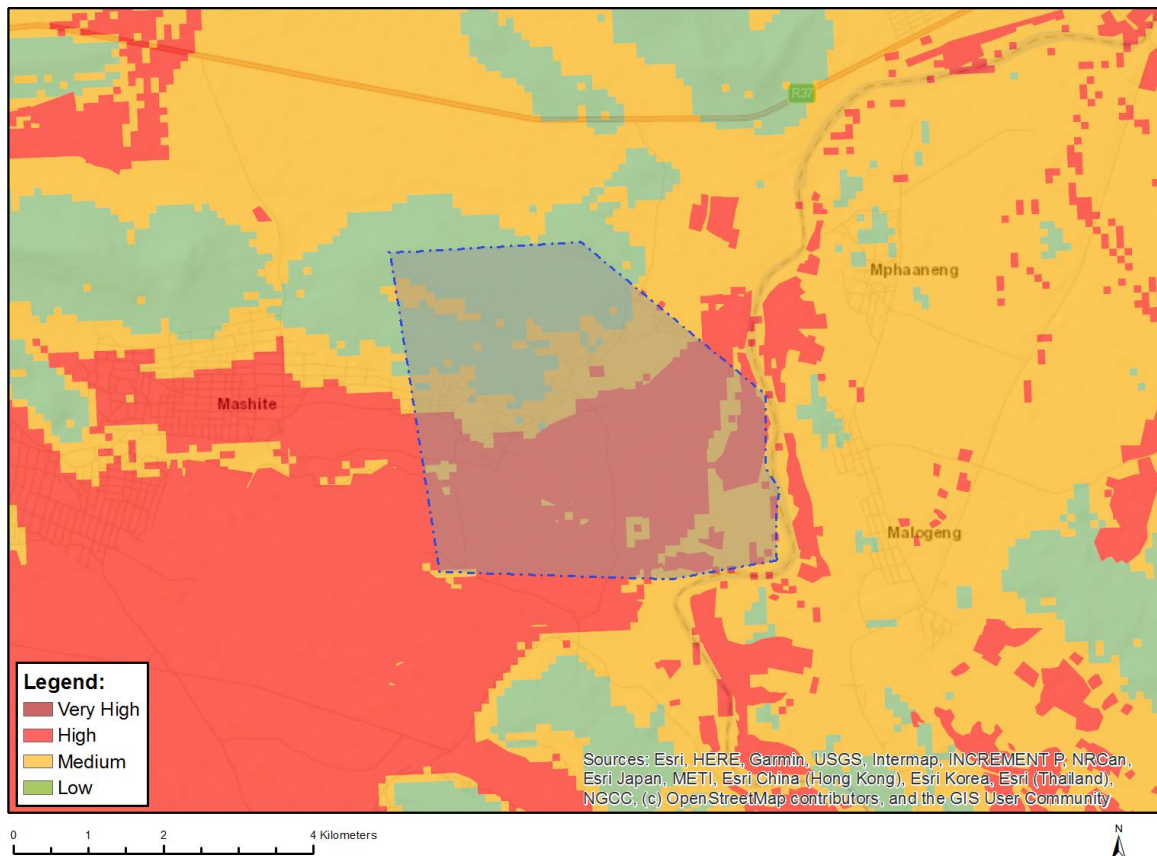
No	Specialist assessment	Assessment Protocol
1	Agricultural Impact Assessment	https://screening.environment.gov.za/ScreeningDownloads/AssessmentProtocols/Gazetted_General_Agriculture_Assessment_Protocols.pdf
2	Archaeological and Cultural Heritage Impact Assessment	https://screening.environment.gov.za/ScreeningDownloads/AssessmentProtocols/Gazetted_General_Requirement_Assessment_Protocols.pdf
3	Palaeontology Impact Assessment	https://screening.environment.gov.za/ScreeningDownloads/AssessmentProtocols/Gazetted_General_Requirement_Assessment_Protocols.pdf

		rotocols.pdf
4	Terrestrial Biodiversity Impact Assessment	https://screening.environment.gov.za/ScreeningDownloads/AssessmentProtocols/Gazetted Terrestrial Biodiversity Assessment Protocols.pdf
5	Aquatic Biodiversity Impact Assessment	https://screening.environment.gov.za/ScreeningDownloads/AssessmentProtocols/Gazetted Aquatic Biodiversity Assessment Protocols.pdf
6	Noise Impact Assessment	https://screening.environment.gov.za/ScreeningDownloads/AssessmentProtocols/Gazetted Noise Impacts Assessment Protocol.pdf
7	Radioactivity Impact Assessment	https://screening.environment.gov.za/ScreeningDownloads/AssessmentProtocols/Gazetted General Requirement Assessment Protocols.pdf
8	Plant Species Assessment	https://screening.environment.gov.za/ScreeningDownloads/AssessmentProtocols/Gazetted Plant Species Assessment Protocols.pdf
9	Animal Species Assessment	https://screening.environment.gov.za/ScreeningDownloads/AssessmentProtocols/Gazetted Animal Species Assessment Protocols.pdf

Results of the environmental sensitivity of the proposed area.

The following section represents the results of the screening for environmental sensitivity of the proposed footprint for relevant environmental themes associated with the project classification. It is the duty of the EAP to ensure that the environmental themes provided by the screening tool are comprehensive and complete for the project. Refer to the disclaimer.

MAP OF RELATIVE AGRICULTURE THEME SENSITIVITY

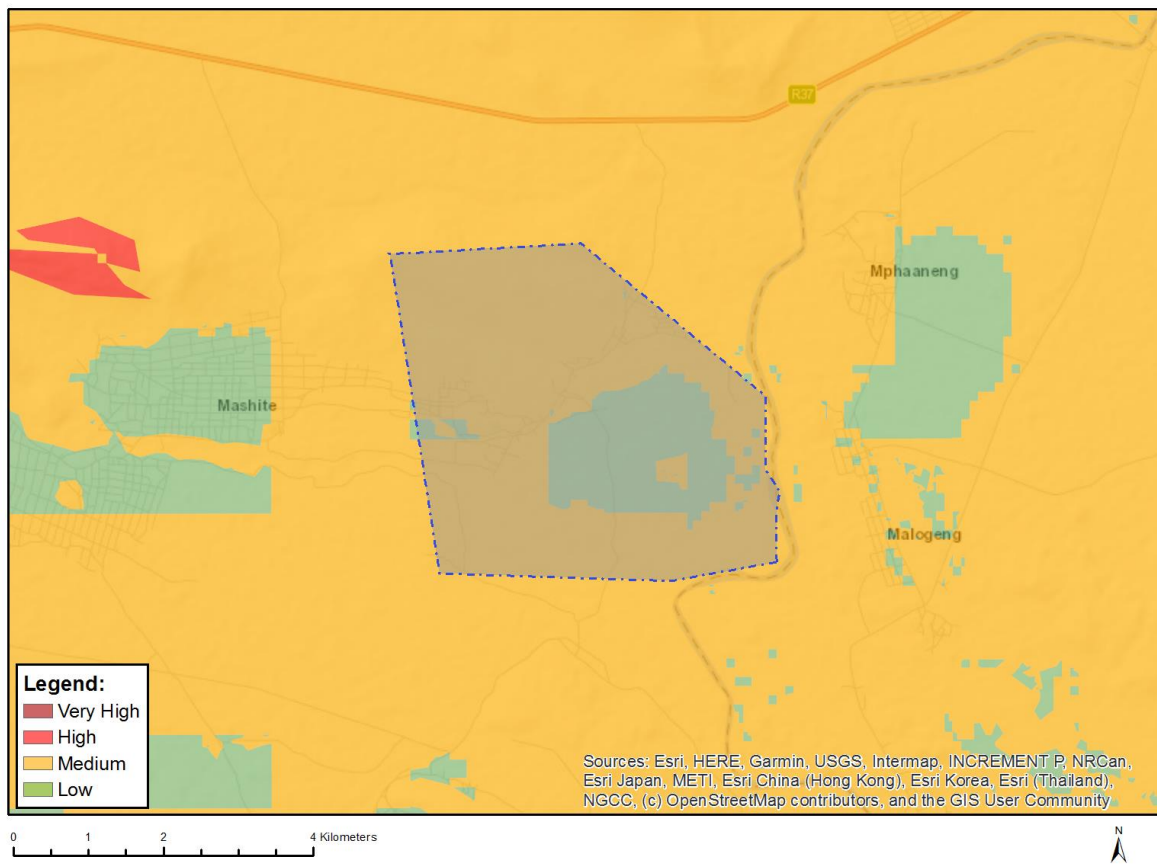


Very High sensitivity	High sensitivity	Medium sensitivity	Low sensitivity
	X		

Sensitivity Features:

Sensitivity	Feature(s)
High	Land capability;09. Moderate-High/10. Moderate-High
High	Subsistence Farming;Land capability;09. Moderate-High/10. Moderate-High
High	Subsistence Farming;Land capability;06. Low-Moderate/07. Low-Moderate/08. Moderate
High	Subsistence Farming_Old fields;Land capability;06. Low-Moderate/07. Low-Moderate/08. Moderate
High	Subsistence Farming;Land capability;01. Very low/02. Very low/03. Low-Very low/04. Low-Very low/05. Low
Low	Land capability;01. Very low/02. Very low/03. Low-Very low/04. Low-Very low/05. Low
Medium	Land capability;06. Low-Moderate/07. Low-Moderate/08. Moderate

MAP OF RELATIVE ANIMAL SPECIES THEME SENSITIVITY



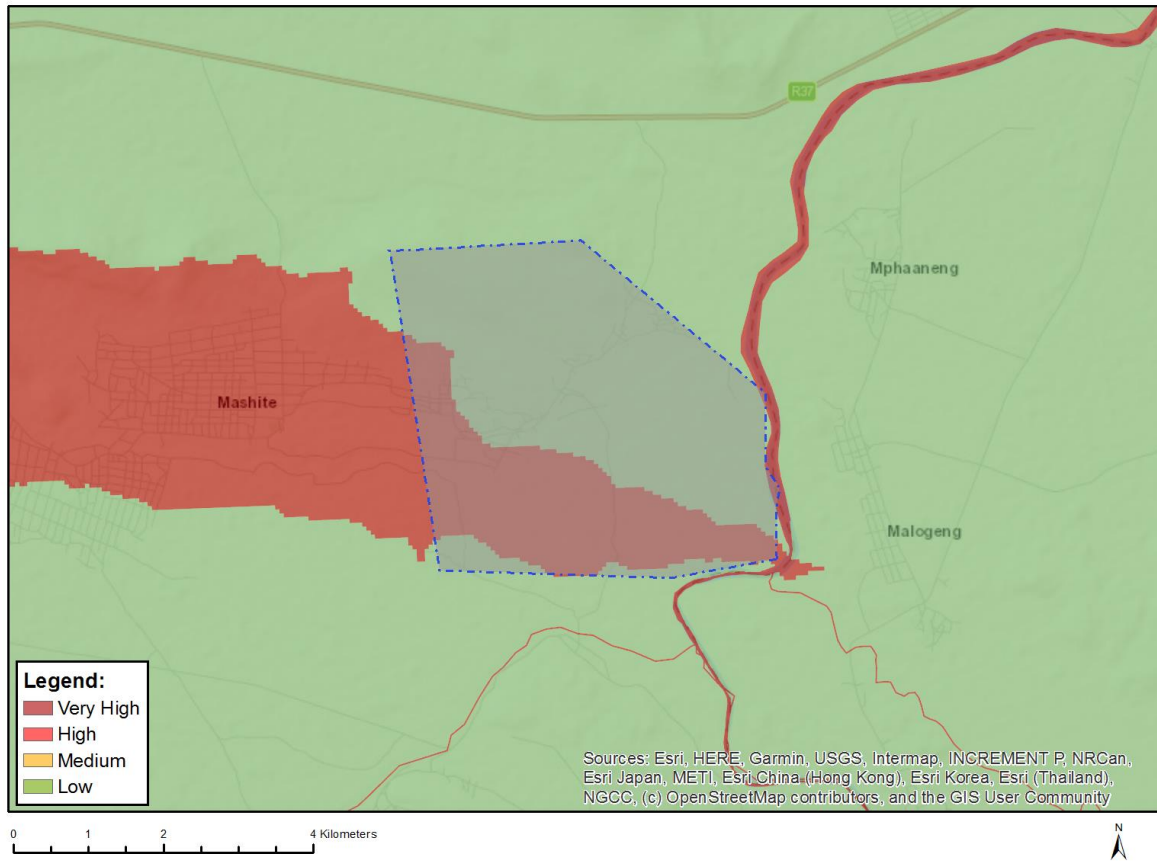
Where only a sensitive plant unique number or sensitive animal unique number is provided in the screening report and an assessment is required, the environmental assessment practitioner (EAP) or specialist is required to email SANBI at eiadatarequests@sanbi.org.za listing all sensitive species with their unique identifiers for which information is required. The name has been withheld as the species may be prone to illegal harvesting and must be protected. SANBI will release the actual species name after the details of the EAP or specialist have been documented.

Very High sensitivity	High sensitivity	Medium sensitivity	Low sensitivity
		X	

Sensitivity Features:

Sensitivity	Feature(s)
Low	Subject to confirmation
Medium	Aves-Podica senegalensis
Medium	Aves-Hydroprogne caspia
Medium	Aves-Sagittarius serpentarius
Medium	Aves-Aquila rapax
Medium	Mammalia-Crocidura maquassiensis
Medium	Mammalia-Dasymys robertsii
Medium	Reptilia-Kinixys lobatsiana

MAP OF RELATIVE AQUATIC BIODIVERSITY THEME SENSITIVITY

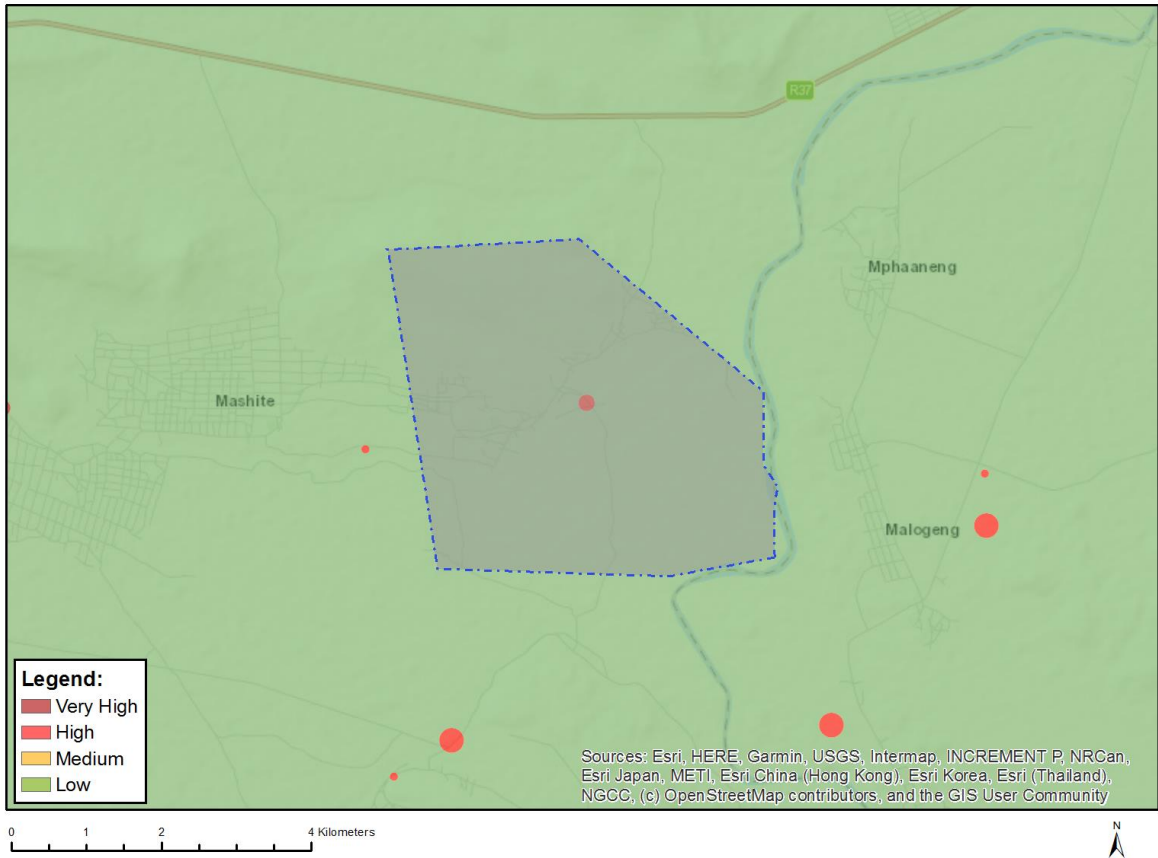


Very High sensitivity	High sensitivity	Medium sensitivity	Low sensitivity
X			

Sensitivity Features:

Sensitivity	Feature(s)
Low	Low sensitivity
Very High	FEPA Subcatchment
Very High	Rivers_D
Very High	Wetlands_(River)
Very High	Wetlands_Central Bushveld Bioregion (Valley-bottom)

MAP OF RELATIVE ARCHAEOLOGICAL AND CULTURAL HERITAGE THEME SENSITIVITY

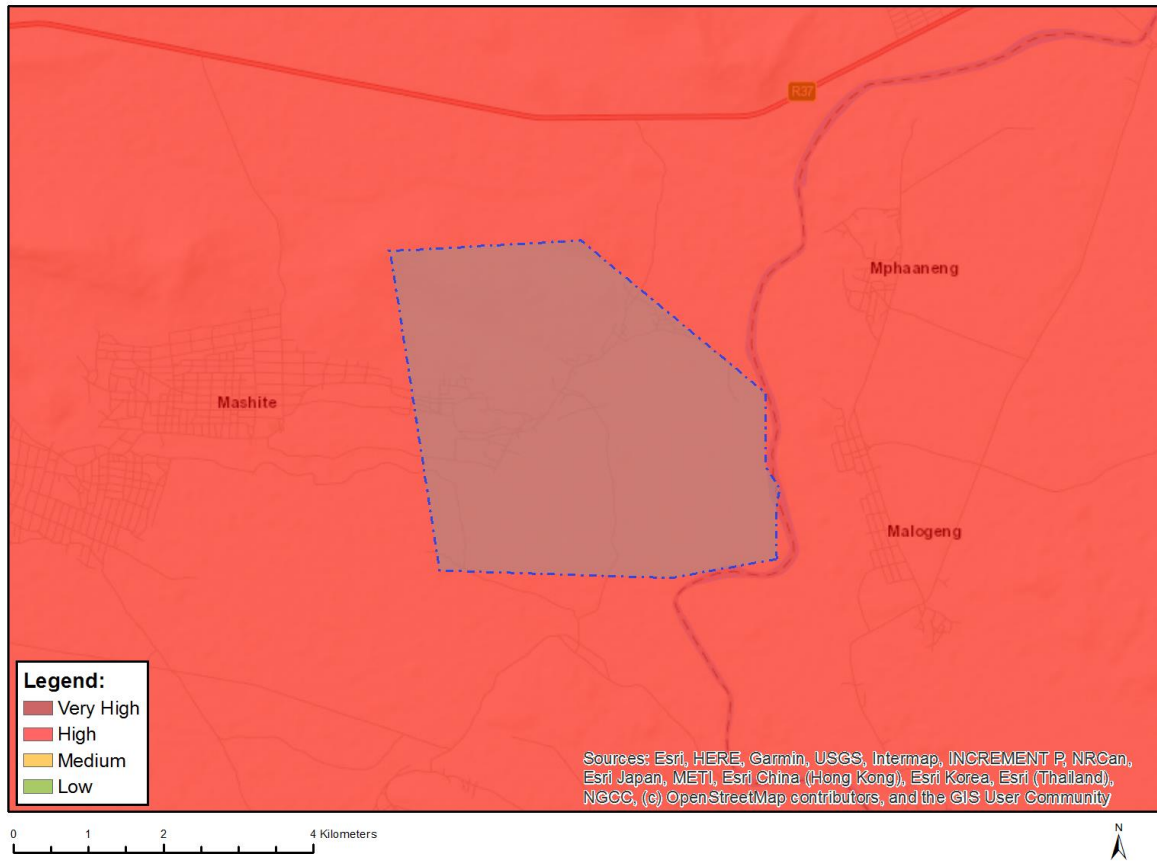


Very High sensitivity	High sensitivity	Medium sensitivity	Low sensitivity
	X		

Sensitivity Features:

Sensitivity	Feature(s)
High	Within 100m of a Grade IIIb Heritage site
Low	Low sensitivity

MAP OF RELATIVE CIVIL AVIATION THEME SENSITIVITY

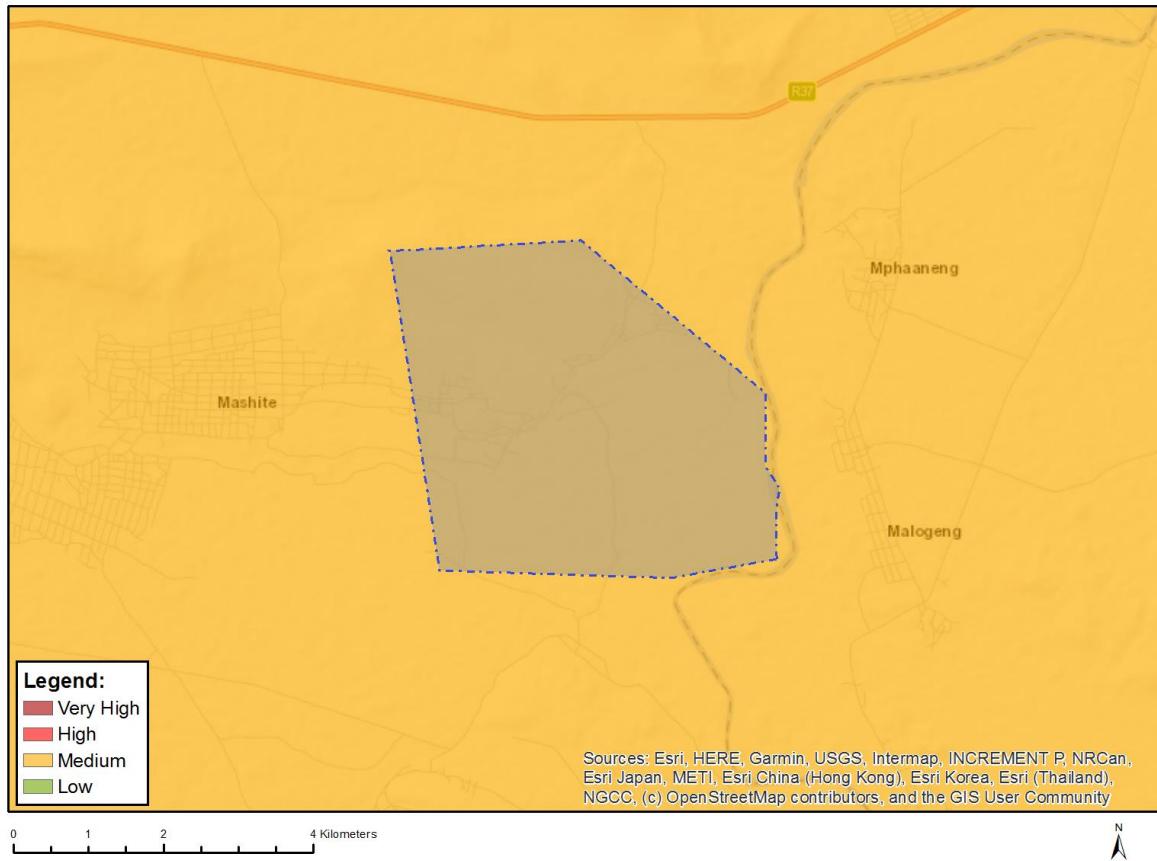


Very High sensitivity	High sensitivity	Medium sensitivity	Low sensitivity
	X		

Sensitivity Features:

Sensitivity	Feature(s)
High	Within 8 km of other civil aviation aerodrome
High	Dangerous and restricted airspace as demarcated
Medium	Between 8 and 15 km of other civil aviation aerodrome

MAP OF RELATIVE DEFENCE THEME SENSITIVITY

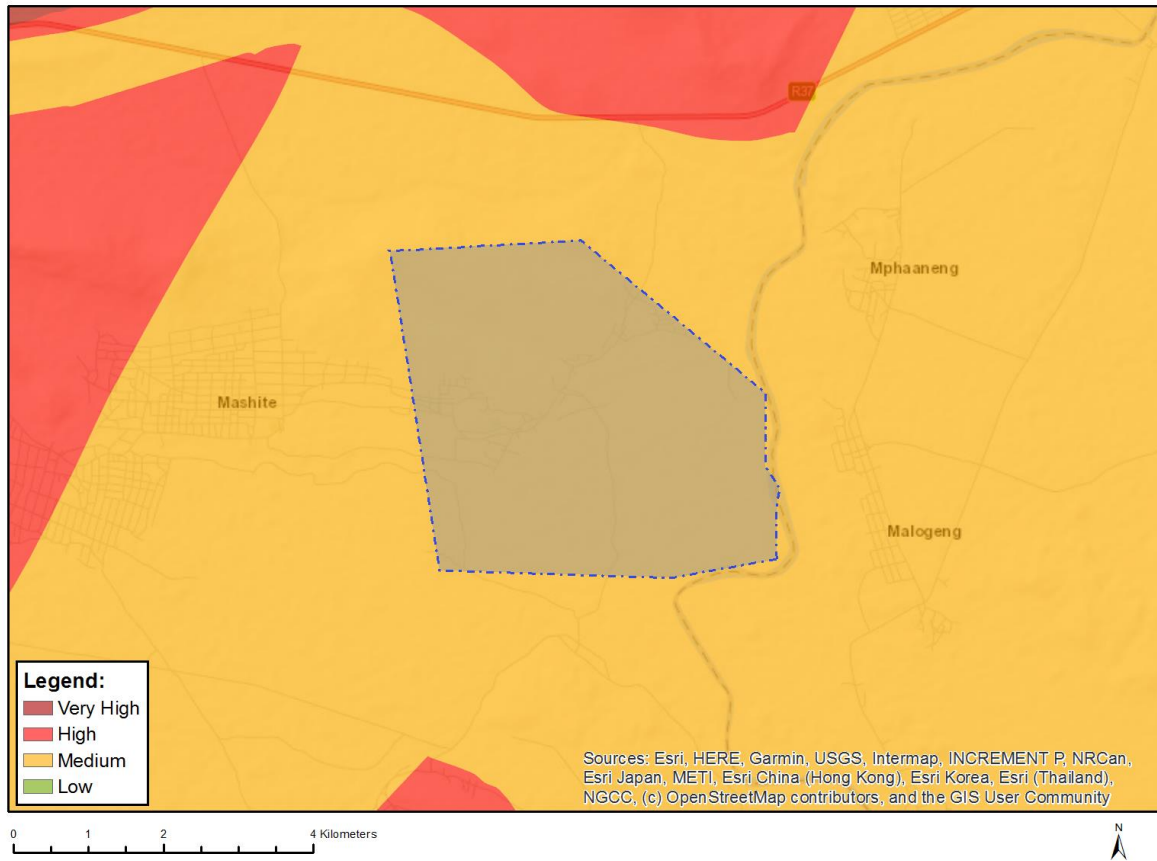


Very High sensitivity	High sensitivity	Medium sensitivity	Low sensitivity
		X	

Sensitivity Features:

Sensitivity	Feature(s)
Medium	Military and Defence Site

MAP OF RELATIVE PALEONTOLOGY THEME SENSITIVITY

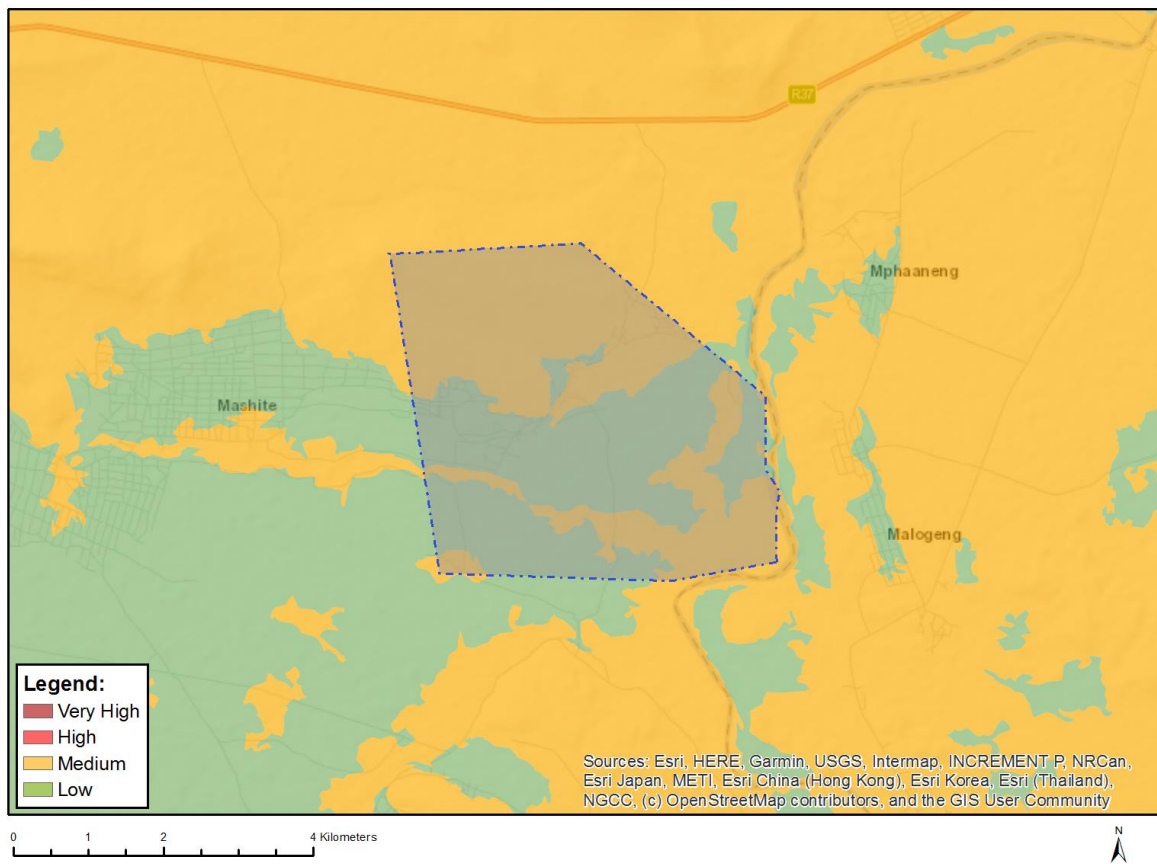


Very High sensitivity	High sensitivity	Medium sensitivity	Low sensitivity
		X	

Sensitivity Features:

Sensitivity	Feature(s)
Medium	Features with a Medium paleontological sensitivity

MAP OF RELATIVE PLANT SPECIES THEME SENSITIVITY



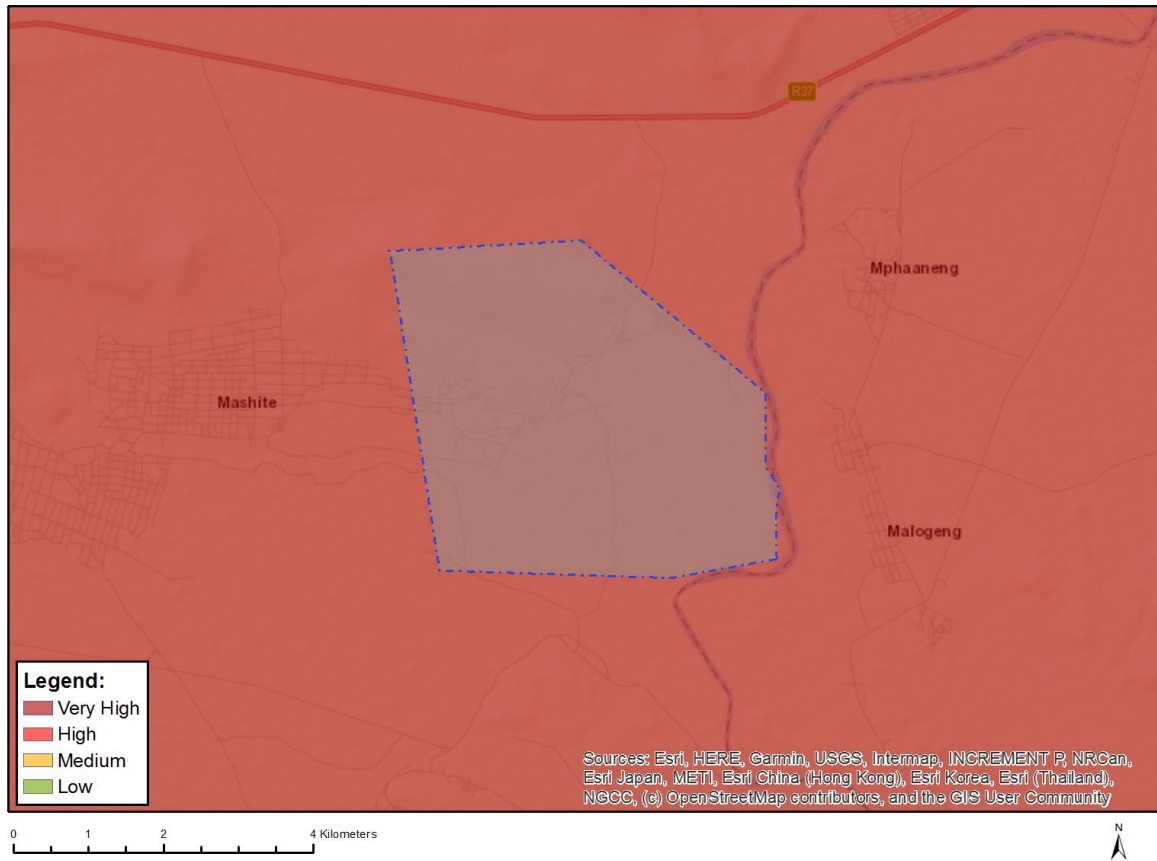
Where only a sensitive plant unique number or sensitive animal unique number is provided in the screening report and an assessment is required, the environmental assessment practitioner (EAP) or specialist is required to email SANBI at eiadatarequests@sanbi.org.za listing all sensitive species with their unique identifiers for which information is required. The name has been withheld as the species may be prone to illegal harvesting and must be protected. SANBI will release the actual species name after the details of the EAP or specialist have been documented.

Very High sensitivity	High sensitivity	Medium sensitivity	Low sensitivity
		X	

Sensitivity Features:

Sensitivity	Feature(s)
Low	Low Sensitivity
Medium	Sensitive species 1252
Medium	Polygala sekhukhuniensis

MAP OF RELATIVE TERRESTRIAL BIODIVERSITY THEME SENSITIVITY



Very High sensitivity	High sensitivity	Medium sensitivity	Low sensitivity
X			

Sensitivity Features:

Sensitivity	Feature(s)
Very High	CBA 1
Very High	CBA 2
Very High	ESA 1
Very High	ESA 2
Very High	FEPA Subcatchment
Very High	EN_Sekhukhune Plains Bushveld