

- Legend**
- River
  - Sand River
  - Leywetpawwa - District Municipality
  - Matjhabeng - Local Municipality
  - Ward no. -24
  - Leywetpawwa - Magisterial district
  - Patent farms
  - Mining Right Application Area

Processed mining area coordinates:

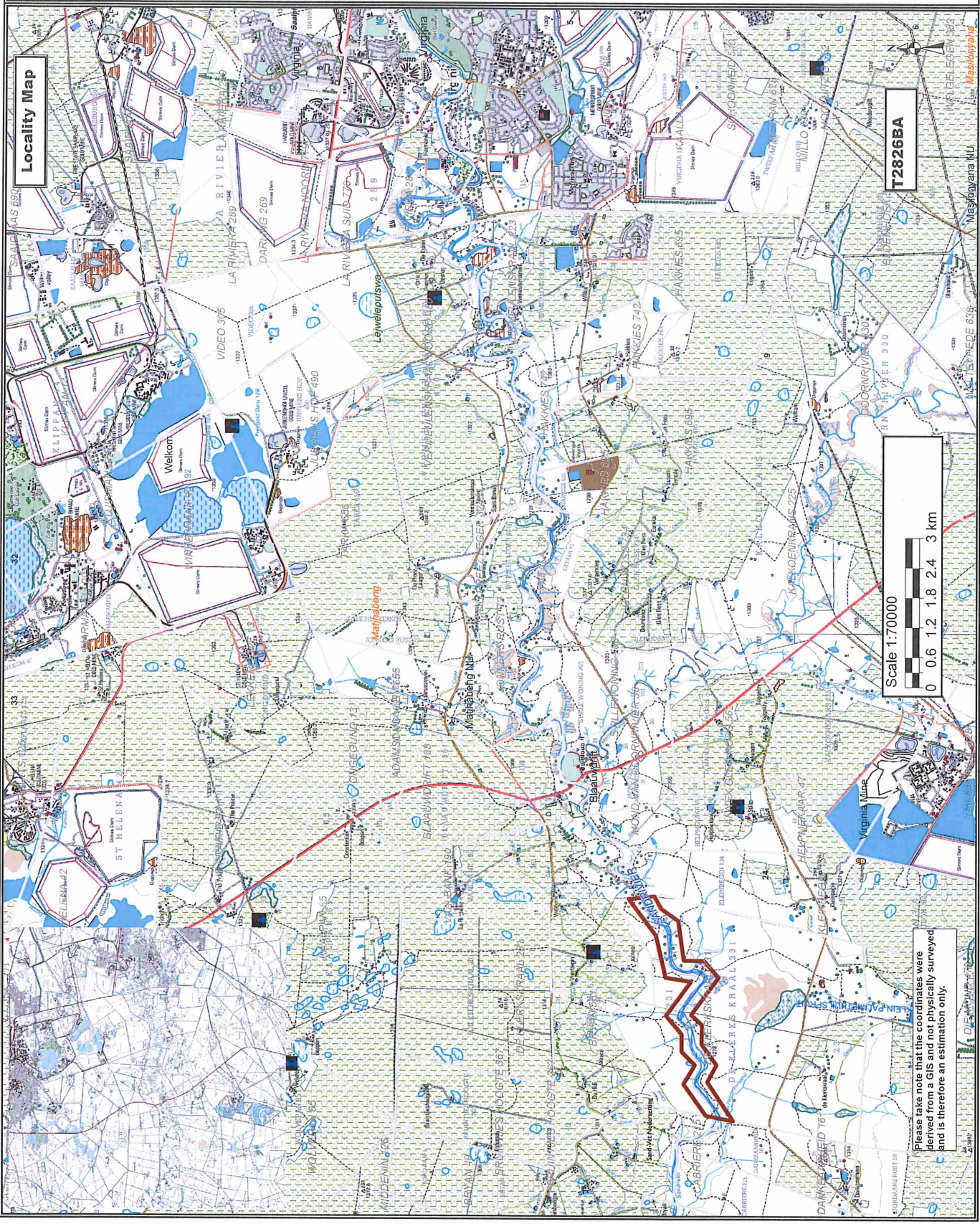
- A 28.141889 26.651466
- B 28.141889 26.651466
- C 28.137772 26.664629
- D 28.137772 26.664629
- E 28.137794 26.688152
- F 28.138884 26.677852
- G 28.134266 26.679719
- H 28.132529 26.689522
- I 28.132288 26.686221
- J 28.132288 26.686221
- K 28.132288 26.686221
- L 28.132288 26.686221
- M 28.133481 26.693746
- N 28.133481 26.693746
- O 28.141321 26.683086
- P 28.137592 26.683212
- Q 28.141321 26.683086
- R 28.143864 26.679683
- S 28.143864 26.679683
- T 28.140871 26.686879
- U 28.140887 26.666156
- V 28.143572 26.651660
- W 28.143572 26.651660
- X 28.146883 26.652005
- Y 28.146883 26.651486
- Z 28.146883 26.651486
- A 28.9330.08°S; 26.3914.46°E
- B 28.9330.08°S; 26.3914.46°E
- C 28.9322.72°S; 26.3942.69°E
- D 28.9314.06°S; 26.3952.89°E
- E 28.9314.06°S; 26.3952.89°E
- F 28.9314.06°S; 26.3952.89°E
- G 28.9320.08°S; 26.4043.86°E
- H 28.9320.08°S; 26.4043.86°E
- I 28.9320.08°S; 26.4043.86°E
- J 28.9320.08°S; 26.4043.86°E
- K 28.9320.08°S; 26.4043.86°E
- L 28.9320.08°S; 26.4043.86°E
- M 28.9320.08°S; 26.4043.86°E
- N 28.9320.08°S; 26.4043.86°E
- O 28.9320.08°S; 26.4043.86°E
- P 28.9320.08°S; 26.4043.86°E
- Q 28.9320.08°S; 26.4043.86°E
- R 28.9320.08°S; 26.4043.86°E
- S 28.9320.08°S; 26.4043.86°E
- T 28.9320.08°S; 26.4043.86°E
- U 28.9320.08°S; 26.4043.86°E
- V 28.9320.08°S; 26.4043.86°E
- W 28.9320.08°S; 26.4043.86°E
- X 28.9320.08°S; 26.4043.86°E
- Y 28.9320.08°S; 26.4043.86°E
- Z 28.9320.08°S; 26.4043.86°E

Mining right application area:  
238.5426 ha

Client:

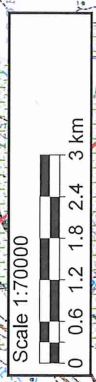


VENGABLOX  
Consultant



Locality Map

T2826BA



Please take note that the coordinates were derived from a GIS and not physically surveyed and is therefore an estimation only.