

ENVIRONMENTAL IMPACT ASSESSMENT  
Draft Environmental Impact Assessment Report for the Proposed  
Construction, Operation and Decommissioning of  
a Seawater Reverse Osmosis Plant and Associated  
Infrastructure in Tongaat, Kwazulu-Natal

**DRAFT  
EIA  
REPORT**



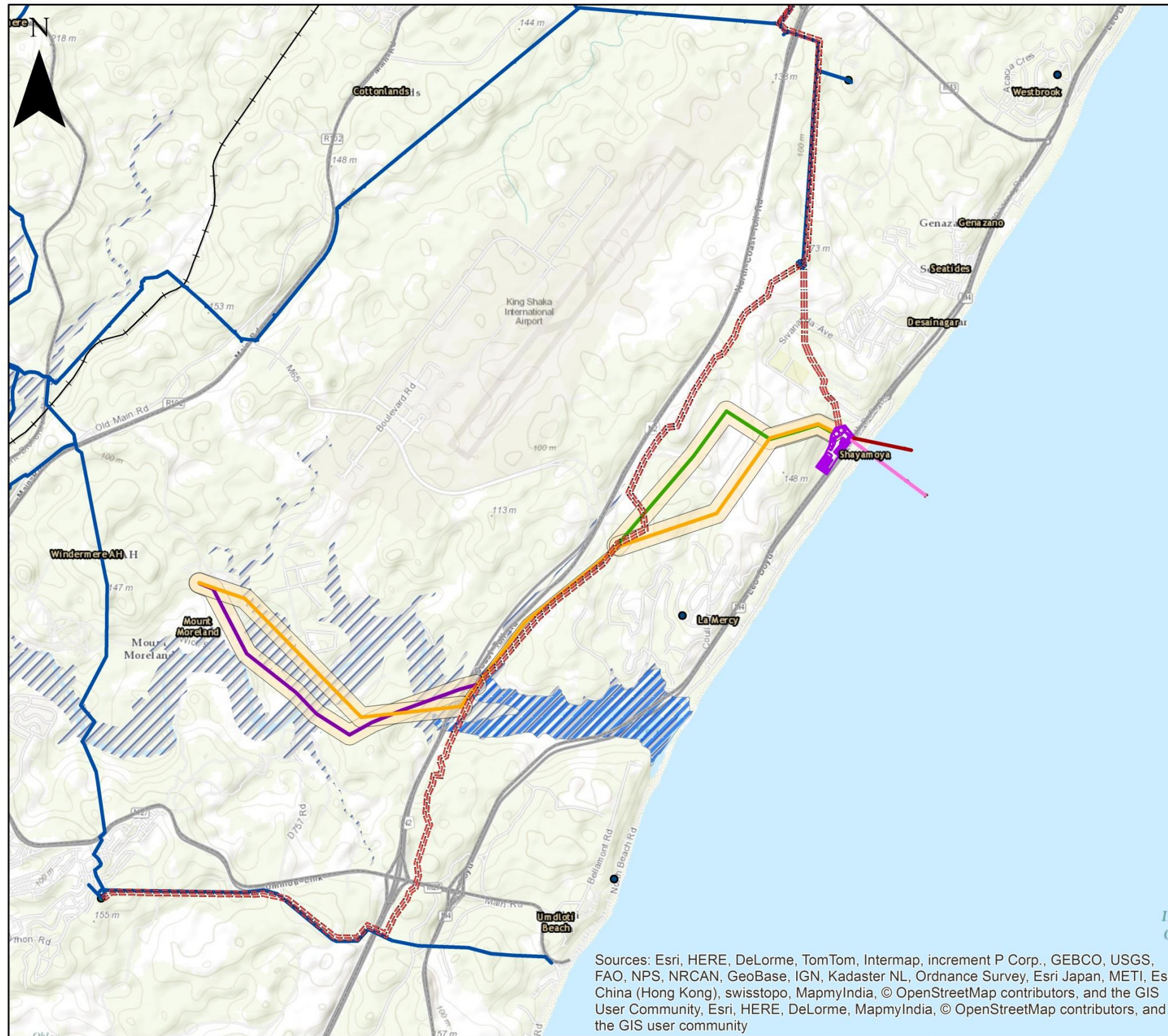
# APPENDIX D

*Maps*

## APPENDIX D MAPS

---

Figure 1:	Topographic map 1/50 000 showing the location of the proposed project	1
Figure 2:	Location map for the proposed project	2
Figure 3:	Landcover (SANBI)	3
Figure 4:	Proposed project in relation to vegetation types and remaining Threatened ecosystems	4
Figure 5:	Proposed project in relation to CBA as defined in the EKZNW Terrestrial Systematic Conservation Plan	5



## TONGAAT

- Seawater Intake
- Brine Discharge
- Proposed desalination site
- Proposed Potable Water Pipeline
- Proposed Powerline
- Proposed powerline\_Alternative 2
- Proposed powerline\_Alternative 1
- Proposed powerline Corridor
- Existing Bulk Water
- +— RailwayLines
- Roads
- Towns
- Existing reservoirs
- Estuarine\_functional\_zones\_2015
- Mdloti\_100YrFloodline

SCALE:

1:50 000

TITLE:

Proposed Sea Reverse Osmosis Plant and  
 associated Infrastructure in Tongaat,  
 KwaZulu Natal

CLIENT:



DATE: February 2016

REV: 1



Sources: Esri, HERE, DeLorme, TomTom, Intermap, increment P Corp., GEBCO, USGS, FAO, NPS, NRCAN, GeoBase, IGN, Kadaster NL, Ordnance Survey, Esri Japan, METI, Esri China (Hong Kong), swisstopo, MapmyIndia, © OpenStreetMap contributors, and the GIS User Community, Esri, HERE, DeLorme, MapmyIndia, © OpenStreetMap contributors, and the GIS user community

Figure 1: Topographic map 1/50 000 showing the location of the proposed project




**TONGAAT**

- Seawater Intake
- Brine Discharge
- Proposed desalination site
- Proposed Potable Water Pipeline
- Proposed Powerline
- Proposed powerline\_Alternative 2
- Proposed powerline\_Alternative 1
- Proposed powerline Corridor
- Existing Bulk Water
- RailwayLines
- Roads
- Towns
- Existing reservoirs
- Estuarine\_functional\_zones\_2015
- Mdloti\_100YrFloodline

SCALE:  
 0 0.5 1 2  
  
 Kilometers

TITLE:  
 Proposed Sea Reverse Osmosis Plant and  
 associated Infrastructure in Tongaat,  
 KwaZulu Natal

CLIENT:  


DATE: February 2016	REV: 1
---------------------	--------


  
our future through science

Figure 2: Location map for the proposed project

# DRAFT EIA REPORT

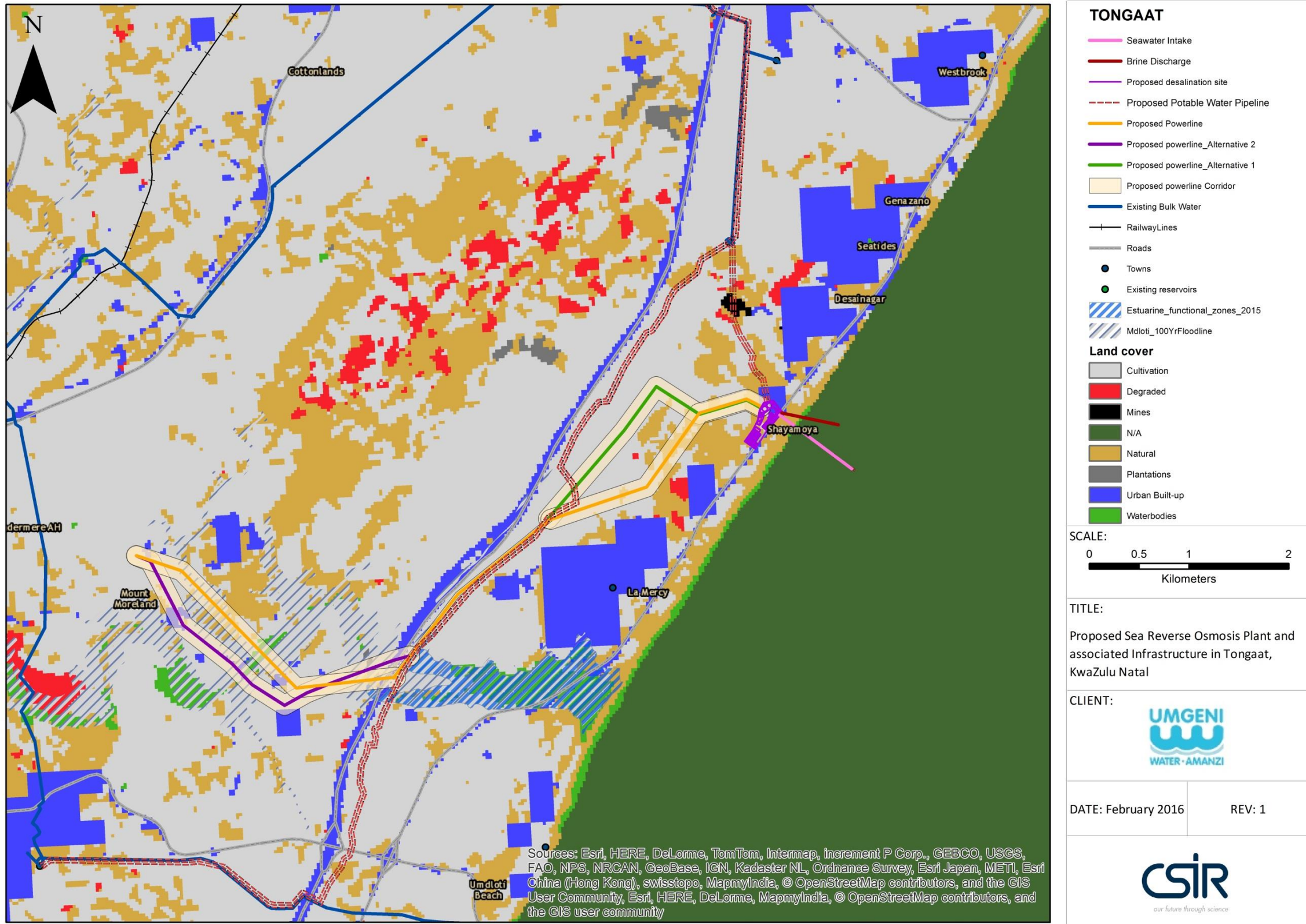


Figure 3: Landcover (SANBI)

# DRAFT EIA REPORT

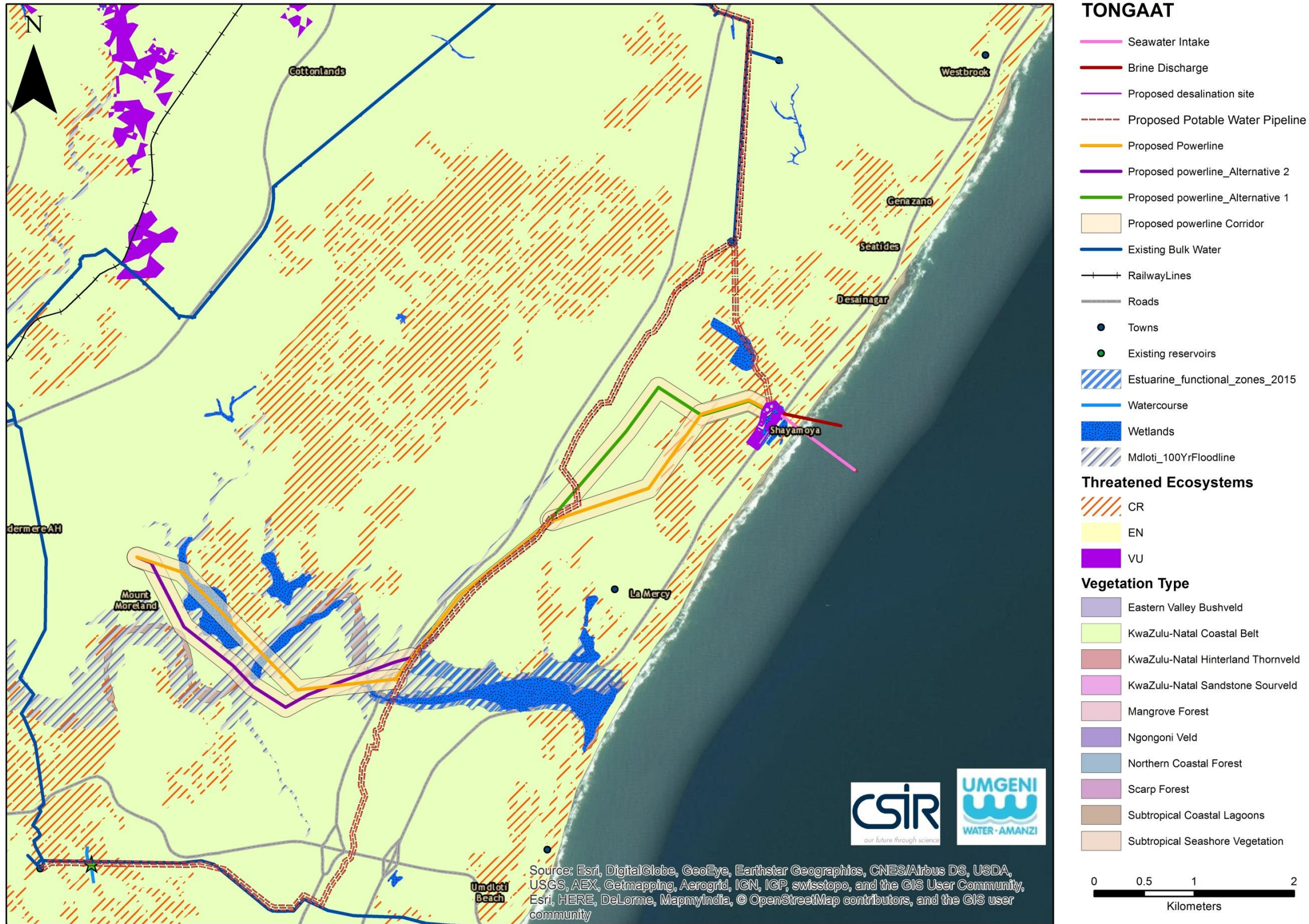


Figure 4: Proposed project in relation to vegetation types and remaining Threatened ecosystems

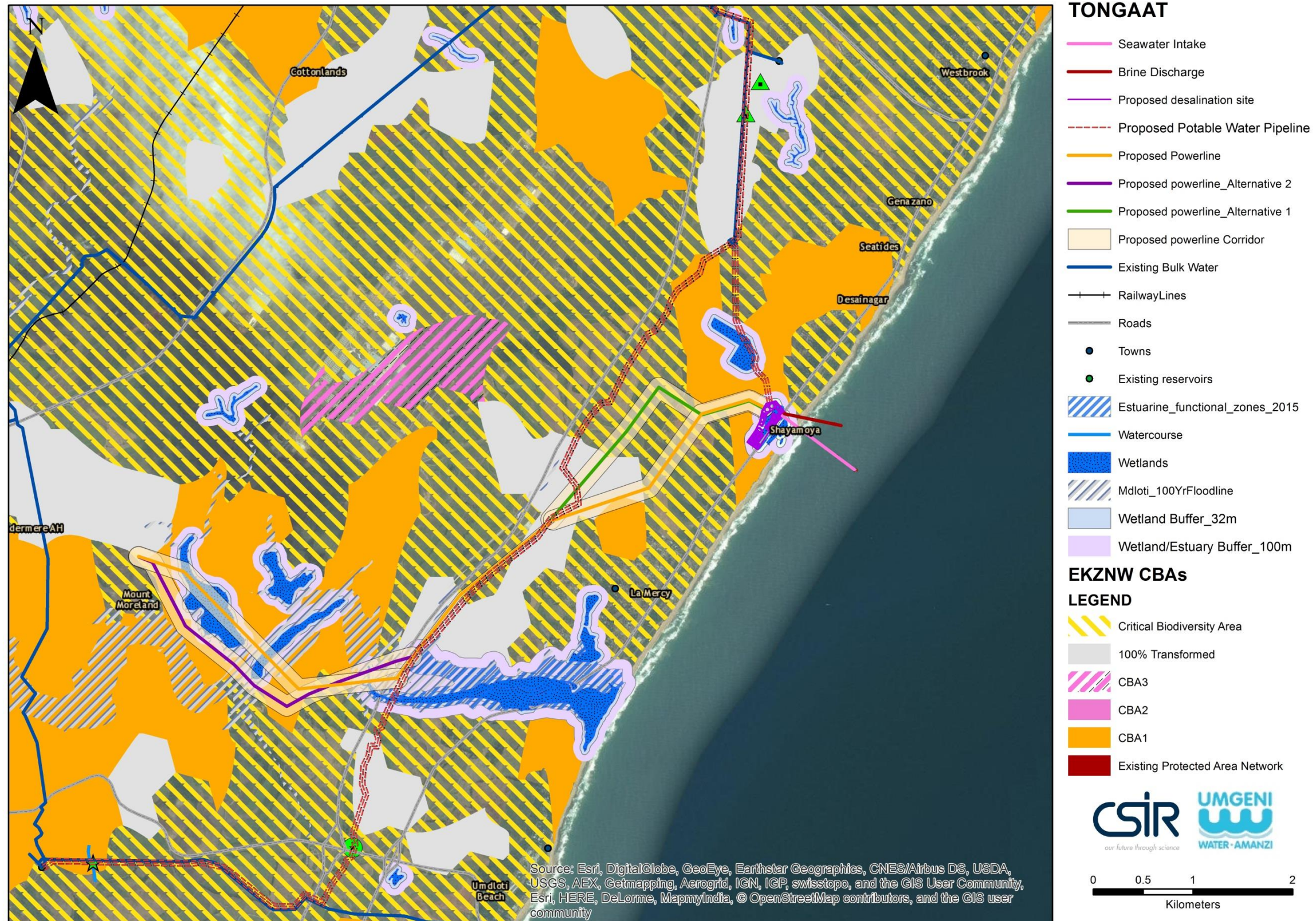


Figure 5: Proposed project in relation to CBA as defined in the EKZNW Terrestrial Systematic Conservation Plan