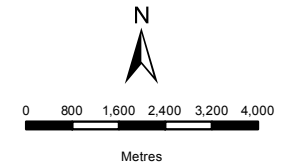


**BIO THERM ENERGY
(PTY) LTD**
SENSITIVITY MAP
ENAMANDLA PV1

Legend

- Letsoai Substations
- Homesteads
- Letsoai Ridgelines
- Heritage Sensitivities
- Gamsberg Inselberg
- Enamandla Site 1
- Development Area
- Homesteads Buffer 400m
- Loop10Rd Buffer 500m
- N14 Buffer 3km
- Letsoai Substations Footprints



DATA SOURCE:
CHIEF DIRECTORATE: NATIONAL GEO-
SPATIAL INFORMATION

PROJECTION: WGS 19 HARTEBEESSHOEK 94
PROJECT TITLE: WIND AND SOLAR RENEWABLES

PROJECT NO: 47579
SCALE: 1:130,000 AT A4 DATE: 24/11/2016
DRAWN BY: SABELO DUBE FIGURE NO:
REVIEWED BY: ASHLEA STRONG



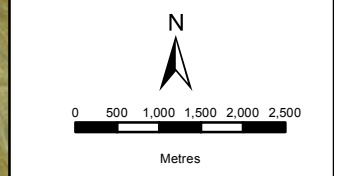
DISCLAIMER
The information on this figure was derived from various digital databases available to WSP Environmental (Pty) Ltd. All information is provided "as is" and it must be acknowledged that data, information, and maps are dynamic and in a constant state of maintenance, correction and update. WSP Environmental (Pty) Ltd cannot accept any responsibility for errors, omissions, or positional accuracy where it has not been directly responsible for the production of the data referenced. There are no warranties, expressed or implied, as to the use of this information, including the warranty of merchantability or fitness for a particular purpose. Notification of any errors will be appreciated.

- Biodiversity**
- Medium Low Sensitivity
 - Medium Sensitivity
 - Medium High Sensitivity
 - High Sensitivity
 - Very High Sensitivity
- Layout**
- PV1- SS2
 - Option 1**
 - SS3-SS1
 - Option 2**
 - SS3- OuterSS
 - Option 3**
 - SS2- SS1

Source: Esri, DigitalGlobe, GeoEye, Earthstar Geographics, CNES/Airbus DS, USDA, USGS, AeroGRID, IGN, and the GIS User Community

**BIO THERM ENERGY
(PTY) LTD**
ENAMANDLA PV1

- Legend**
- Development
 - PV1- SS2
 - Enamandla PV1
 - Option 1**
 - SS3-SS1
 - Option 2**
 - SS3-OuterSS
 - Option 3**
 - SS2-SS1

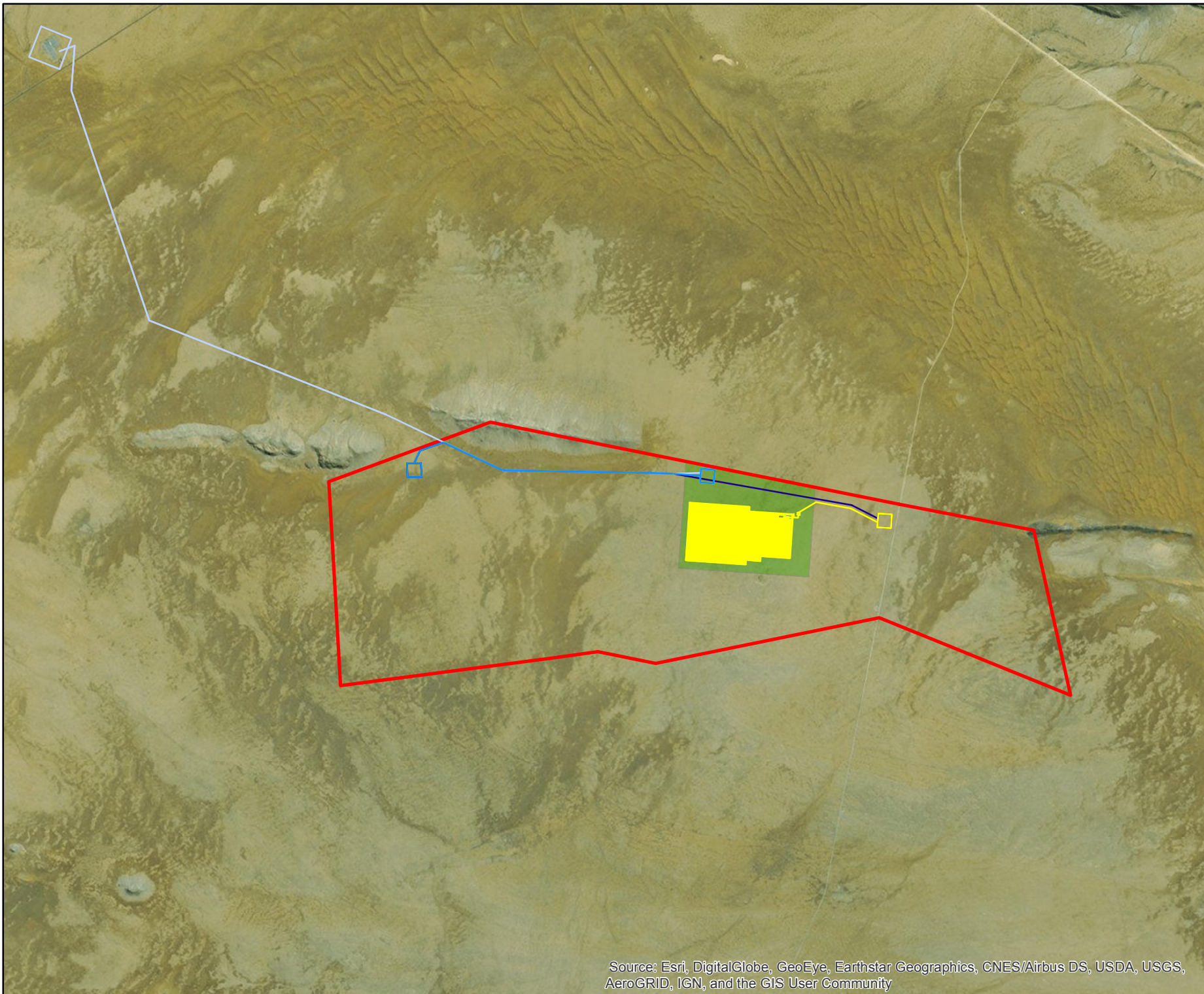


DATA SOURCE:	
SOUTH AFRICAN DEPARTMENT OF RURAL DEVELOPMENT ANDLAND REFORM- CHIEF DIRECTORATE: NATIONAL GEO-SPATIAL INFORMATION	
PROJECTION: WGS 19 HARTEBEEHOCK 94	
PROJECT TITLE:	
WIND AND SOLAR RENEWABLES	
PROJECT NO: 47579	
SCALE: 1:90,000 AT A4	DATE: 2016/11/22
DRAWN BY: SABELO DUBE	FIGURE NO:
REVIEWED BY: ASHLEA STRONG	



DISCLAIMER

The information on this figure was derived from various digital databases available to WSP Environmental (Pty) Ltd. All information is provided "as is" and it must be acknowledged that data, information, and maps are dynamic and in a constant state of maintenance, correction and update. WSP Environmental (Pty) Ltd cannot accept any responsibility for errors, omissions, or positional accuracy where it has not been directly responsible for the production of the data referenced. There are no warranties, expressed or implied, as to the use of this information, including the warranty of merchantability or fitness for a particular purpose. Notification of any errors will be appreciated.

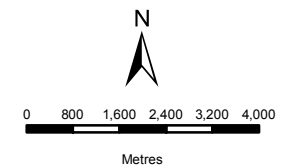


Source: Esri, DigitalGlobe, GeoEye, Earthstar Geographics, CNES/Airbus DS, USDA, USGS, AeroGRID, IGN, and the GIS User Community

BIO THERM ENERGY (PTY) LTD
LAYOUT MAP
ENAMANDLA PV1

Legend

- Letsoai Substations
 - Rivers
 - Letsoai Ridgelines
 - Heritage Sensitivities
 - Gamsberg Inselberg
 - Enamandla PV 1
 - Letsoai Enamandla Boundaries
 - Loop10Rd Buffer 500m
 - N14 Buffer 3km
 - Letsoai Substations Footprints
 - NFEPA Wetlands
- SANBI Wetland Vegetation**
- Nama Karoo Bushmanland
 - Richtersveld (Skr)



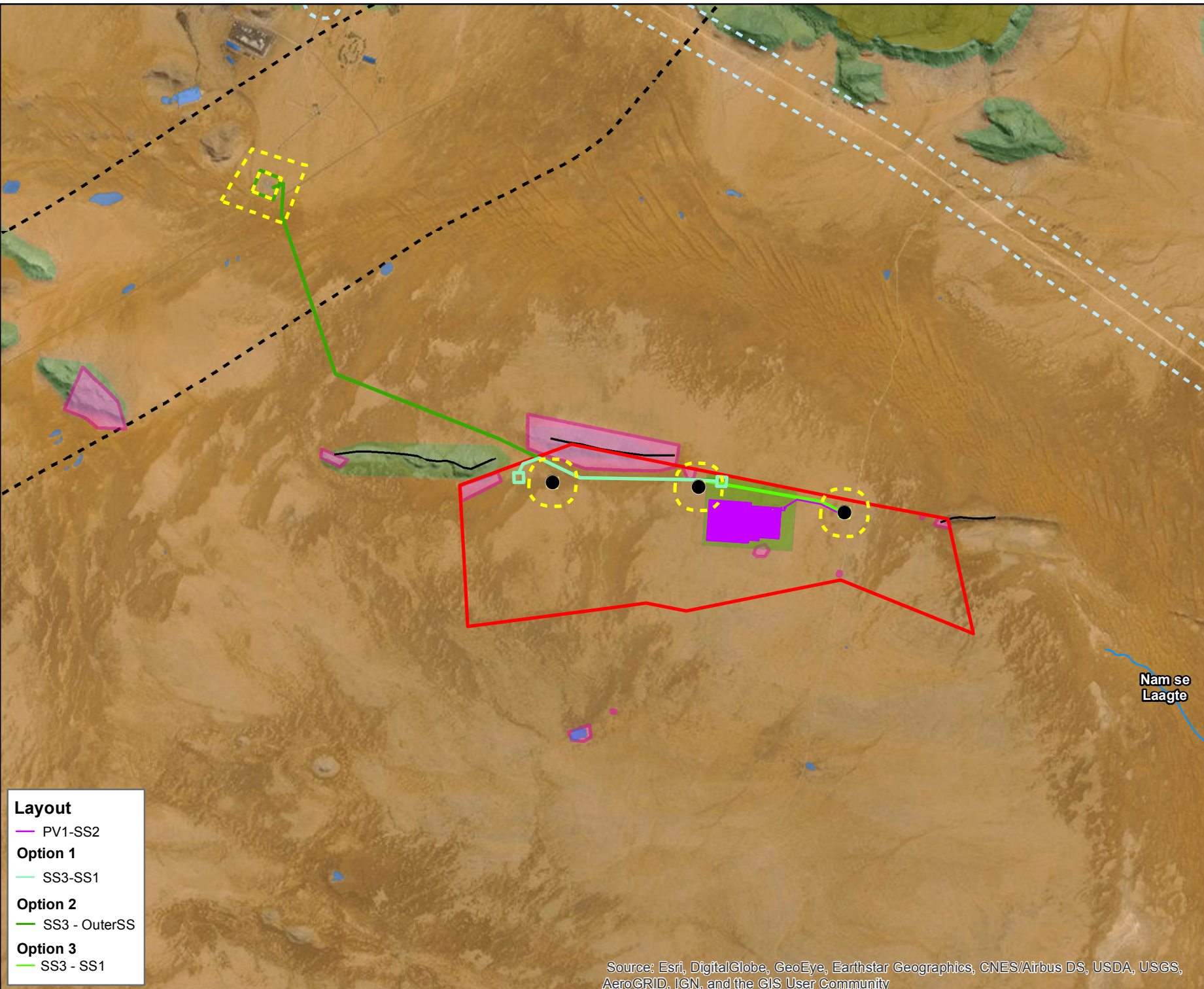
DATA SOURCE:
 CHIEF DIRECTORATE: NATIONAL GEO-SPATIAL INFORMATION
 NFEPA, SANBI

PROJECTION: WGS 19 HARTEBEE SHOEK 94
 PROJECT TITLE: WIND AND SOLAR RENEWABLES

PROJECT NO: 47579
 SCALE: 1:130,000 AT A4 DATE: 08/12/2016
 DRAWN BY: SABELO DUBE FIGURE NO:
 REVIEWED BY: ASHLEA STRONG



DISCLAIMER
 The information on this figure was derived from various digital databases available to WSP Environmental (Pty) Ltd. All information is provided "as is" and it must be acknowledged that data, information, and maps are dynamic and in a constant state of maintenance, correction and update. WSP Environmental (Pty) Ltd cannot accept any responsibility for errors, omissions, or positional accuracy where it has not been directly responsible for the production of the data referenced. There are no warranties, expressed or implied, as to the use of this information, including the warranty of merchantability or fitness for a particular purpose. Notification of any errors will be appreciated.



- Layout**
- PV1-SS2
- Option 1**
- SS3-SS1
- Option 2**
- SS3 - OuterSS
- Option 3**
- SS3 - SS1

Source: Esri, DigitalGlobe, GeoEye, Earthstar Geographics, CNES/Airbus DS, USDA, USGS, AeroGRID, IGN, and the GIS User Community

BIO THERM ENERGY (PTY) LTD
REGIONAL MAP
 ENAMANDLA PV1

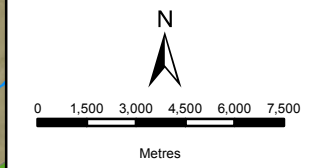
Legend

- Letsoai Substations
- Eskom Powelines
- Non- Perennial Rivers
- Powerlines
- Roads
- National Road
- Enamandla PV1
- ▭ Letsoai Enamandla Boundaries
- ▭ Letsoai Substations Footprints
- ▭ NFEPA Wetlands

CBA Terrestrial

CBA Type

- ESA_T
- T1
- T2



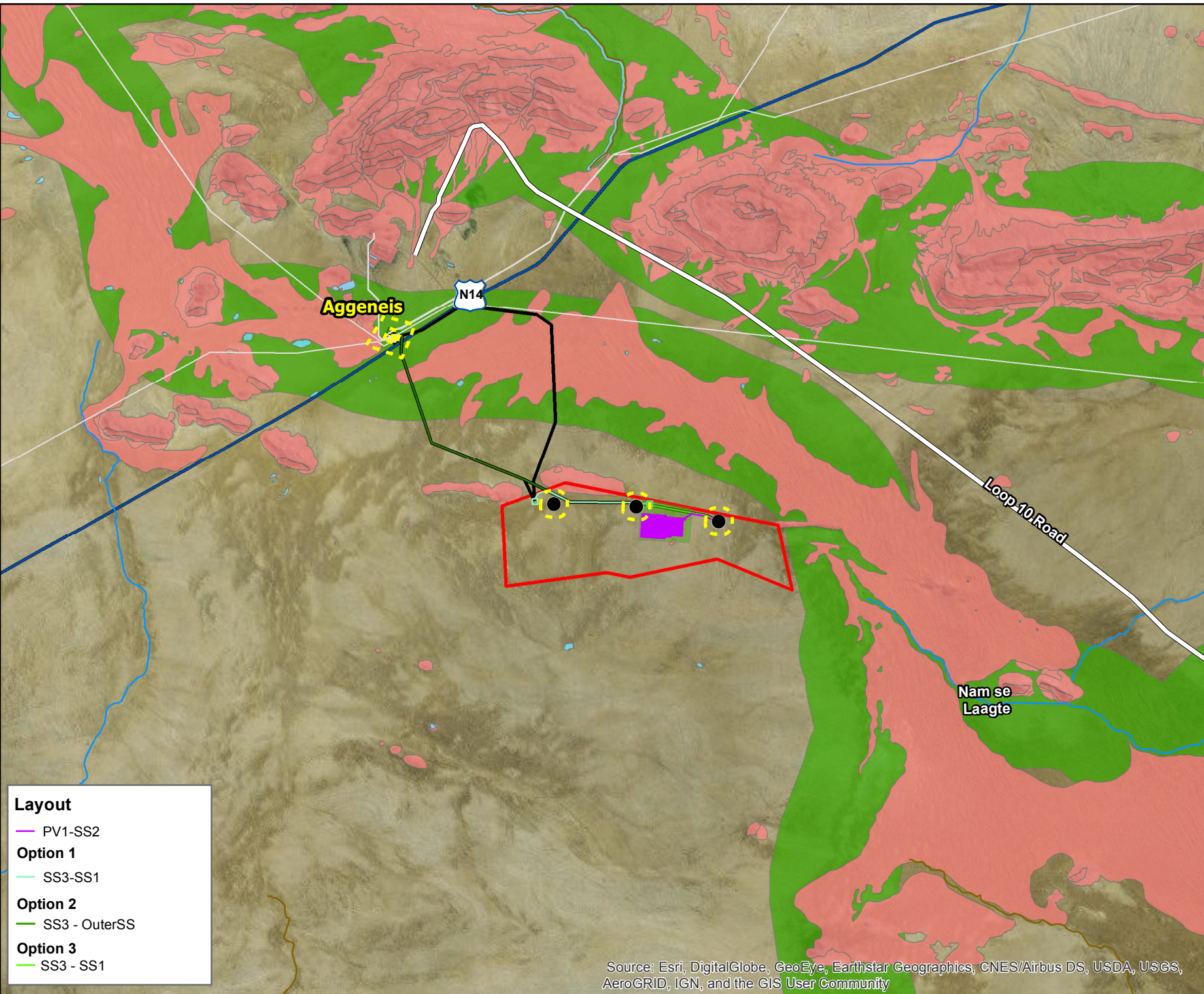
DATA SOURCE:
 CHIEF DIRECTORATE: NATIONAL GEO-SPATIAL INFORMATION
 NFEPA, SANBI

PROJECTION: WGS 19 HARTEBESHOEK 94
 PROJECT TITLE: WIND AND SOLAR RENEWABLES

PROJECT NO: 47579
 SCALE: 1:230,000 AT A4 DATE: 08/12/2016
 DRAWN BY: SABELO DUBE FIGURE NO:
 REVIEWED BY: ASHLEA STRONG



DISCLAIMER
 The information on this figure was derived from various digital databases available to WSP Environmental (Pty) Ltd. All information is provided "as is" and it must be acknowledged that data, information, and maps are dynamic and in a constant state of maintenance, correction and update. WSP Environmental (Pty) Ltd cannot accept any responsibility for errors, omissions, or positional accuracy where it has not been directly responsible for the production of the data referenced. There are no warranties, expressed or implied, as to the use of this information, including the warranty of merchantability or fitness for a particular purpose. Notification of any errors will be appreciated.



Aggeneis

N14

Loop 10 Road


Nam se Laagte

- Layout**
- PV1-SS2
 - Option 1**
 - SS3-SS1
 - Option 2**
 - SS3 - OuterSS
 - Option 3**
 - SS3 - SS1



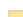

Source: Esri, DigitalGlobe, GeoEye, Earthstar Geographics, CNES/Airbus DS, USDA, USGS, AeroGRID, IGN, and the GIS User Community

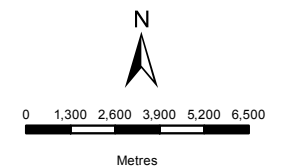
**BIO THERM ENERGY
(PTY) LTD**
SLOPE ANALYSIS
ENAMANDLA PV1

Legend

-  Roads
-  National Road
-  Enamandla PV 1
-  Letsoai Enamandla Boundaries

Slope

-  0 - 9%
-  15 - 25%
-  9 - 15%
-  > 25%



DATA SOURCE:
CHIEF DIRECTORATE: NATIONAL GEO-
SPATIAL INFORMATION
NFEPA, SANBI

PROJECTION: WGS 19 HARTEBEESSHOEK 94

PROJECT TITLE: WIND AND SOLAR RENEWABLES

PROJECT NO: 47579





SCALE: 1:220,000 AT A4 DATE: 08/12/2016

DRAWN BY: SABELO DUBE FIGURE NO:

REVIEWED BY: ASHLEA STRONG



DISCLAIMER
The information on this figure was derived from various digital databases available to WSP Environmental (Pty) Ltd. All information is provided "as is" and it must be acknowledged that data, information, and maps are dynamic and in a constant state of maintenance, correction and update. WSP Environmental (Pty) Ltd cannot accept any responsibility for errors, omissions, or positional accuracy where it has not been directly responsible for the production of the data referenced. There are no warranties, expressed or implied, as to the use of this information, including the warranty of merchantability or fitness for a particular purpose. Notification of any errors will be appreciated.

- Layout**
-  PV1-SS2
 - Option 1**
 -  SS3-SS1
 - Option 2**
 -  SS3 - OuterSS
 - Option 3**
 -  SS3 - SS1

Source: Esri, DigitalGlobe, GeoEye, Earthstar Geographics, CNES/Airbus DS, USDA, USGS, AeroGRID, IGN, and the GIS User Community

BIO THERM ENERGY (PTY) LTD
LAYOUT MAP
ENAMANDLA PV1

Legend

- Eskom Powelines
- Rivers
- Letsoai Ridgelines
- Heritage Sensitivities
- Gamsberg Inselberg
- Enamandla PV 1
- Letsoai Enamandla Boundaries
- NFEPA Wetlands

CBA Terrestrial

CBA Type

- ESA_T
- T1
- T2

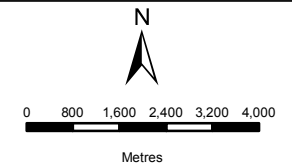
Protected Vegetation

- Kamiesberg Bushmanland Augrabies

Vegetation

Levels of Protection

- Least threatened



DATA SOURCE:
 CHIEF DIRECTORATE: NATIONAL GEO-
 SPATIAL INFORMATION
 NFEPA, SANBI

PROJECTION: WGS 19 HARTBEESHOK 94
 PROJECT TITLE: WIND AND SOLAR RENEWABLES

PROJECT NO: 47579
 SCALE: 1:130,000 AT A4 DATE: 08/12/2016
 DRAWN BY: SABELO DUBE FIGURE NO:
 REVIEWED BY: ASHLEA STRONG



DISCLAIMER
 The information on this figure was derived from various digital databases available to WSP Environmental (Pty) Ltd. All information is provided "as is" and it must be acknowledged that data, information, and maps are dynamic and in a constant state of maintenance, correction and update. WSP Environmental (Pty) Ltd cannot accept any responsibility for errors, omissions, or positional accuracy where it has not been directly responsible for the production of the data referenced. There are no warranties, expressed or implied, as to the use of this information, including the warranty of merchantability or fitness for a particular purpose. Notification of any errors will be appreciated.

Aggeneis

Nam se Laagte

Layout

- PV1-SS2
- Option 1
- SS3-SS1
- Option 2
- SS3 - OuterSS
- Option 3
- SS3 - SS1

Source: Esri, DigitalGlobe, GeoEye, Earthstar Geographics, CNES/Airbus DS, USDA, USGS, AeroGRID, IGN, and the GIS User Community