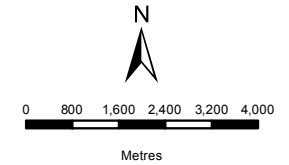


**BIO THERM ENERGY  
(PTY) LTD**  
SENSITIVITY MAP  
ENAMANDLA PV2

**Legend**

- Letsoai Substations
- Homesteads
- Letsoai Ridgelines
- Heritage Sensitivities
- Gamsberg Inselberg
- Enamandla Site 2
- Development Area
- Homesteads Buffer 400m
- Loop10Rd Buffer 500m
- N14 Buffer 3km
- Letsoai Substations Footprints



DATA SOURCE:  
CHIEF DIRECTORATE: NATIONAL GEO-  
SPATIAL INFORMATION

PROJECTION: WGS 19 HARTEBEESSHOEK 94  
PROJECT TITLE: WIND AND SOLAR RENEWABLES

PROJECT NO: 47579  
SCALE: 1:130,000 AT A4      DATE: 24/11/2016  
DRAWN BY: SABELO DUBE      FIGURE NO:  
REVIEWED BY: ASHLEA STRONG



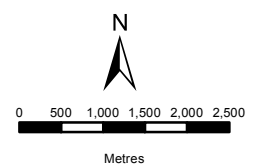
**DISCLAIMER**  
The information on this figure was derived from various digital databases available to WSP Environmental (Pty) Ltd. All information is provided "as is" and it must be acknowledged that data, information, and maps are dynamic and in a constant state of maintenance, correction and update. WSP Environmental (Pty) Ltd cannot accept any responsibility for errors, omissions, or positional accuracy where it has not been directly responsible for the production of the data referenced. There are no warranties, expressed or implied, as to the use of this information, including the warranty of merchantability or fitness for a particular purpose. Notification of any errors will be appreciated.

- Biodiversity**
- Medium Low Sensitivity
  - Medium Sensitivity
  - Medium High Sensitivity
  - High Sensitivity
  - Very High Sensitivity
- Layout**
- PV2- SS1
  - Option 1**
  - SS3-SS1
  - Option 2**
  - SS3- OuterSS
  - Option 3**
  - SS2- SS1

Source: Esri, DigitalGlobe, GeoEye, Earthstar Geographics, CNES/Airbus DS, USDA, USGS, AeroGRID, IGN, and the GIS User Community

**BIO THERM ENERGY  
(PTY) LTD**  
ENAMANDLA PV2

- Legend**
- Development
  - PV2- SS1
  - Enamandla PV2
  - Option 1**
  - SS3-SS1
  - Option 2**
  - SS3-OuterSS
  - Option 3**
  - SS2-SS1



DATA SOURCE:  
SOUTH AFRICAN DEPARTMENT OF RURAL  
DEVELOPMENT AND LAND REFORM-  
CHIEF DIRECTORATE: NATIONAL GEO-SPATIAL  
INFORMATION

PROJECTION: WGS 19 HARTEBEEHOCK 94

PROJECT TITLE:  
WIND AND SOLAR RENEWABLES

PROJECT NO: 47579

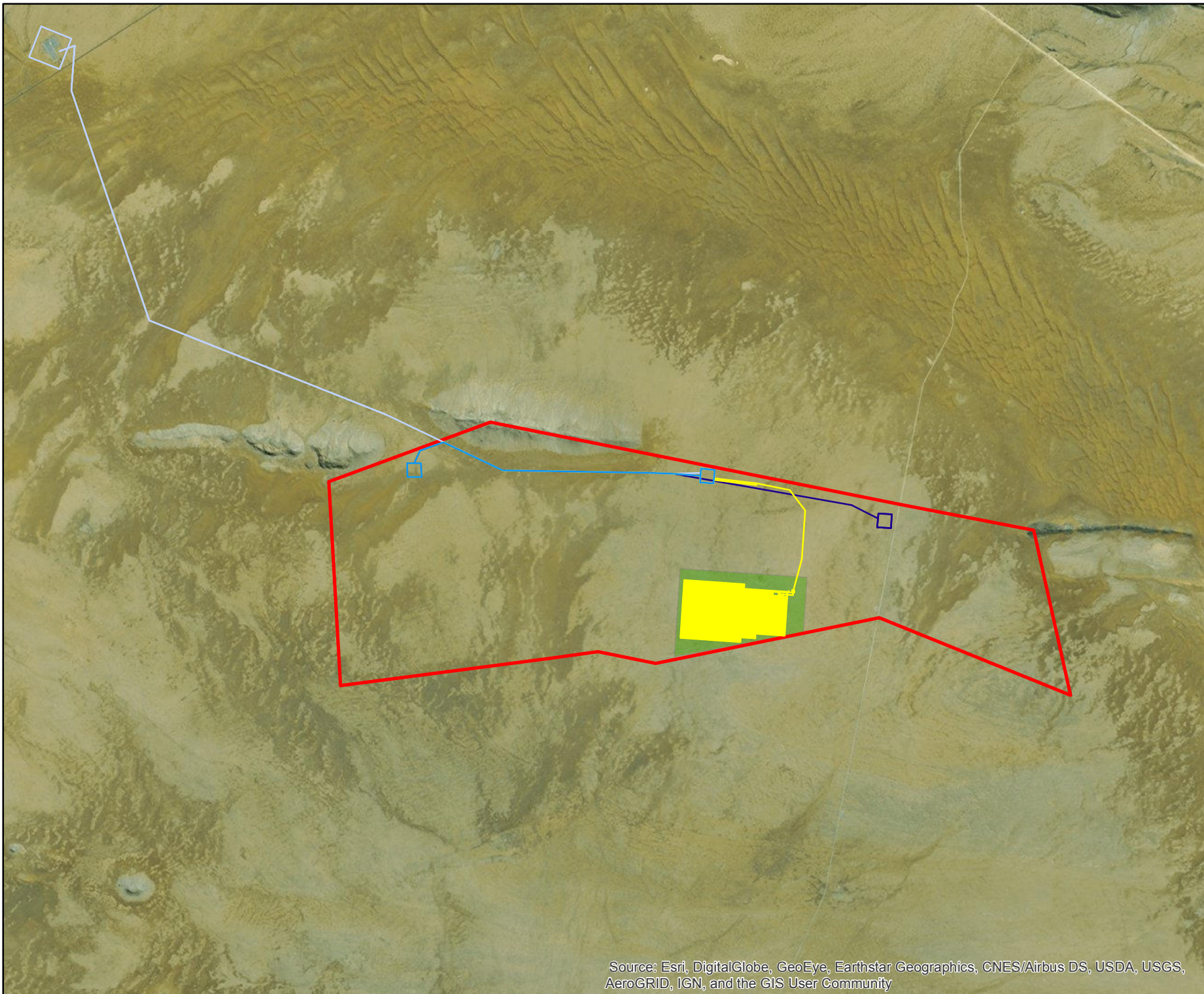
SCALE: 1:90,000 AT A4	DATE: 2016/11/22
DRAWN BY: SABELO DUBE	FIGURE NO:

REVIEWED BY: ASHLEA STRONG



**DISCLAIMER**

The information on this figure was derived from various digital databases available to WSP Environmental (Pty) Ltd. All information is provided "as is" and it must be acknowledged that data, information, and maps are dynamic and in a constant state of maintenance, correction and update. WSP Environmental (Pty) Ltd cannot accept any responsibility for errors, omissions, or positional accuracy where it has not been directly responsible for the production of the data referenced. There are no warranties, expressed or implied, as to the use of this information, including the warranty of merchantability or fitness for a particular purpose. Notification of any errors will be appreciated.

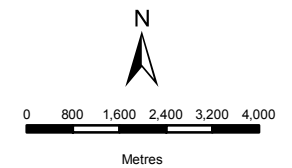


Source: Esri, DigitalGlobe, GeoEye, Earthstar Geographics, CNES/Airbus DS, USDA, USGS, AeroGRID, IGN, and the GIS User Community

**BIO THERM ENERGY (PTY) LTD**  
**LAYOUT MAP**  
**ENAMANDLA PV2**

**Legend**

- Letsoai Substations
- Rivers
- Letsoai Ridgelines
- Heritage Sensitivities
- Gamsberg Inselberg
- Enamandla PV 2
- Letsoai Enamandla Boundaries
- Loop10Rd Buffer 500m
- N14 Buffer 3km
- Letsoai Substations Footprints
- NFEPA Wetlands
- SANBI Wetland Vegetation**
- Nama Karoo Bushmanland
- Richtersveld (Skr)



DATA SOURCE:  
 CHIEF DIRECTORATE: NATIONAL GEO-SPATIAL INFORMATION  
 NFEPA, SANBI

PROJECTION: WGS 19 HARTEBEESSHOEK 94

PROJECT TITLE: WIND AND SOLAR RENEWABLES

PROJECT NO: 47579

SCALE: 1:130,000 AT A4      DATE: 08/12/2016

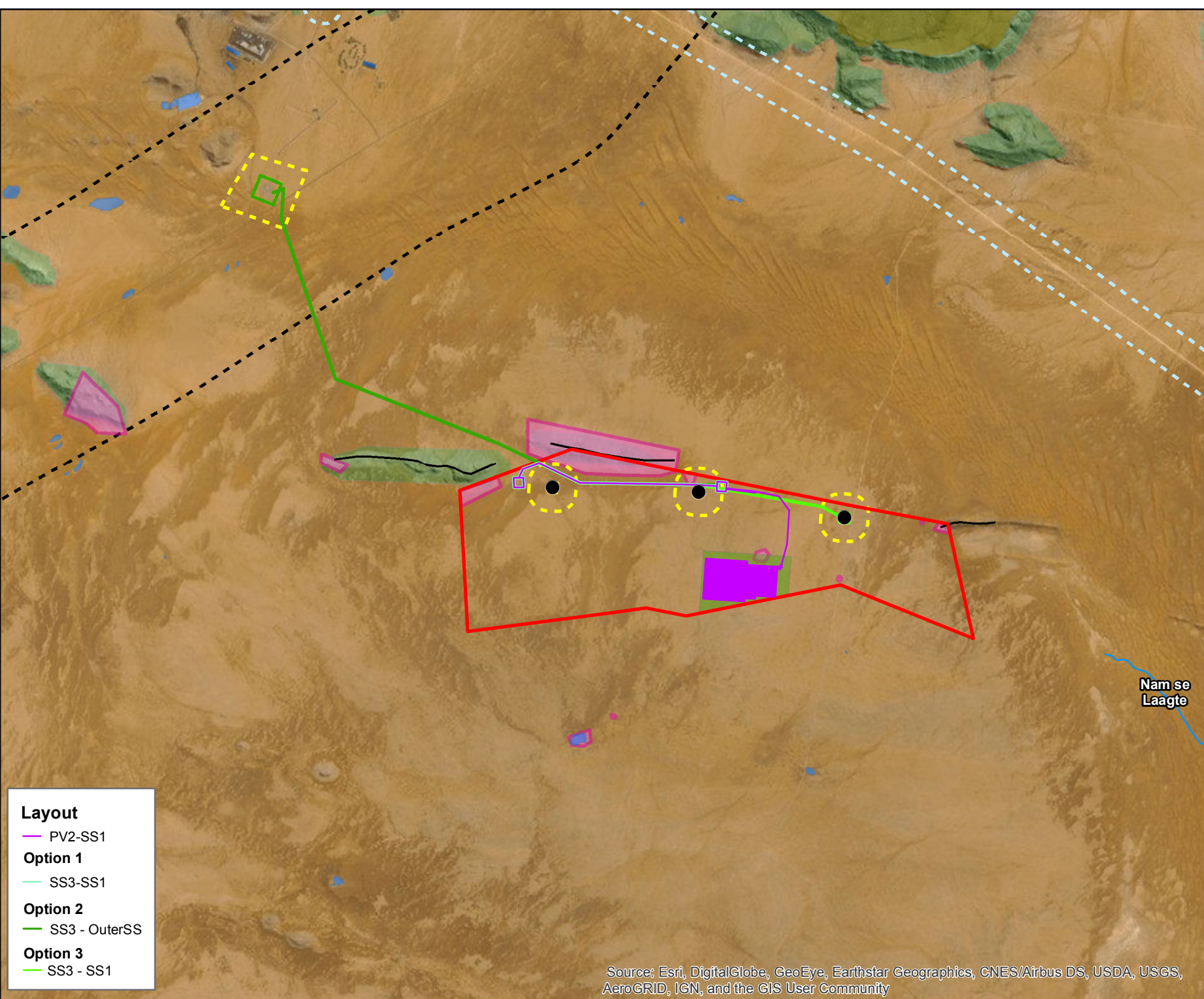
DRAWN BY: SABELO DUBE      FIGURE NO:

REVIEWED BY: ASHLEA STRONG



**DISCLAIMER**

The information on this figure was derived from various digital databases available to WSP Environmental (Pty) Ltd. All information is provided "as is" and it must be acknowledged that data, information, and maps are dynamic and in a constant state of maintenance, correction and update. WSP Environmental (Pty) Ltd cannot accept any responsibility for errors, omissions, or positional accuracy where it has not been directly responsible for the production of the data referenced. There are no warranties, expressed or implied, as to the use of this information, including the warranty of merchantability or fitness for a particular purpose. Notification of any errors will be appreciated.



- Layout**
- PV2-SS1
  - Option 1**
  - SS3-SS1
  - Option 2**
  - SS3 - OuterSS
  - Option 3**
  - SS3 - SS1

Source: Esri, DigitalGlobe, GeoEye, Earthstar Geographics, CNES/Airbus DS, USDA, USGS, AeroGRID, IGN, and the GIS User Community

**BIO THERM ENERGY (PTY) LTD**  
**REGIONAL MAP**  
 ENAMANDLA PV2

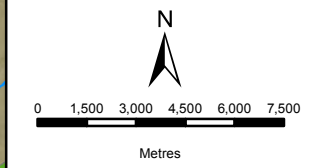
**Legend**

- Letsoai Substations
- Eskom Powelines
- Non- Perennial Rivers
- Powerlines
- Roads
- National Road
- Enamandla PV2
- ▭ Letsoai Enamandla Boundaries
- ▭ Letsoai Substations Footprints
- NFEPA Wetlands

**CBA Terrestrial**

**CBA Type**

- ESA\_T
- T1
- T2



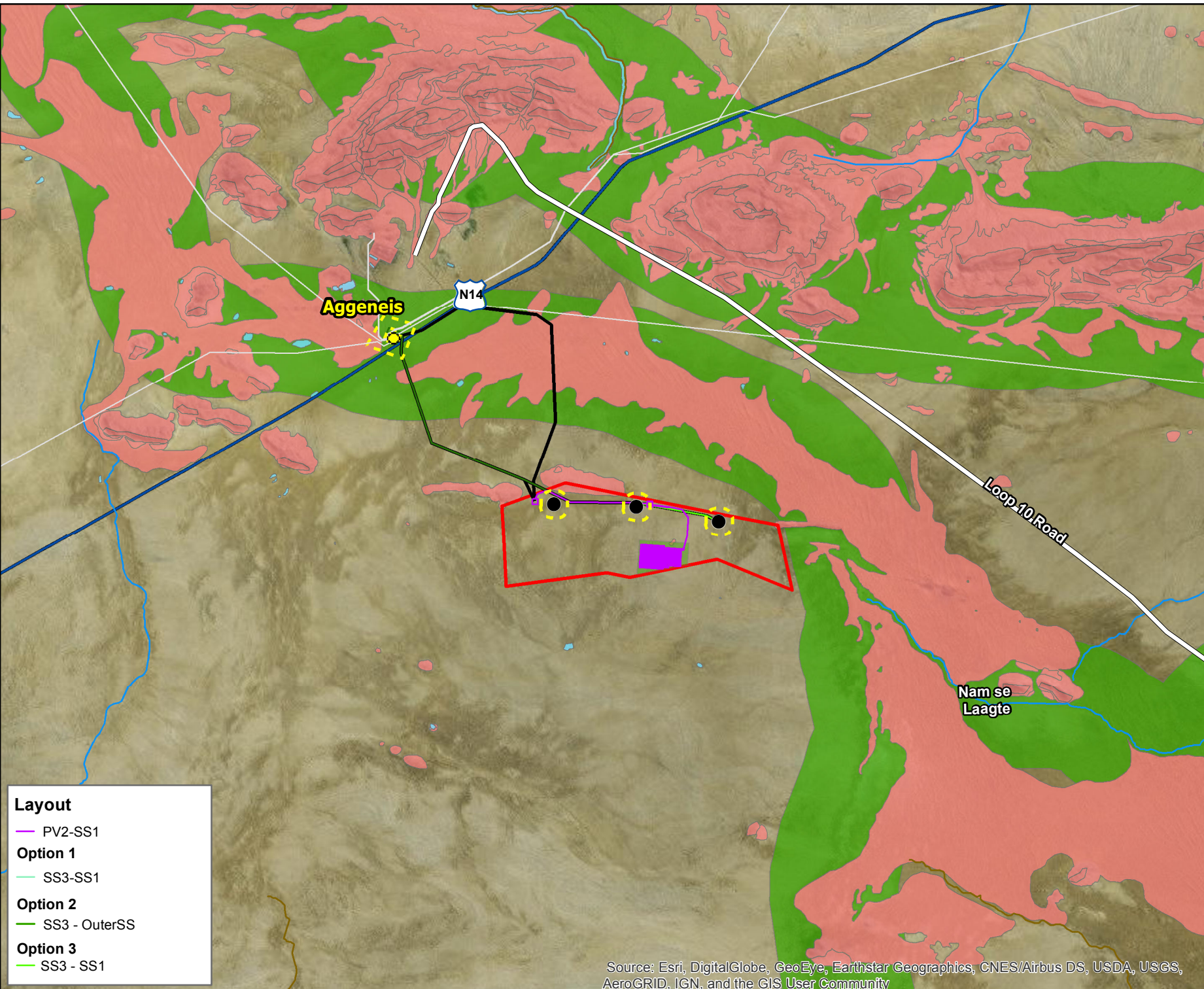
DATA SOURCE:  
 CHIEF DIRECTORATE: NATIONAL GEO-SPATIAL INFORMATION  
 NFEPA, SANBI

PROJECTION: WGS 19 HARTEBEESSHOEK 94  
 PROJECT TITLE: WIND AND SOLAR RENEWABLES

PROJECT NO: 47579  
 SCALE: 1:230,000 AT A4      DATE: 08/12/2016  
 DRAWN BY: SABELO DUBE      FIGURE NO:  
 REVIEWED BY: ASHLEA STRONG



**DISCLAIMER**  
 The information on this figure was derived from various digital databases available to WSP Environmental (Pty) Ltd. All information is provided "as is" and it must be acknowledged that data, information, and maps are dynamic and in a constant state of maintenance, correction and update. WSP Environmental (Pty) Ltd cannot accept any responsibility for errors, omissions, or positional accuracy where it has not been directly responsible for the production of the data referenced. There are no warranties, expressed or implied, as to the use of this information, including the warranty of merchantability or fitness for a particular purpose. Notification of any errors will be appreciated.







- Layout**
- PV2-SS1
  - Option 1**
  - SS3-SS1
  - Option 2**
  - SS3 - OuterSS
  - Option 3**
  - SS3 - SS1



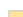

Source: Esri, DigitalGlobe, GeoEye, Earthstar Geographics, CNES/Airbus DS, USDA, USGS, AeroGRID, IGN, and the GIS User Community

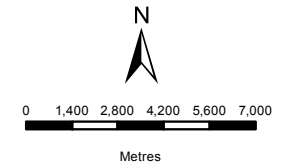
**BIO THERM ENERGY  
(PTY) LTD**  
SLOPE ANALYSIS  
ENAMANDLA PV2

**Legend**

-  Roads
-  National Road
-  Enamandla PV2
-  Letsoai Enamandla Boundaries

**Slope**

-  0 - 9%
-  15 - 25%
-  9 - 15%
-  > 25%



DATA SOURCE:  
CHIEF DIRECTORATE: NATIONAL GEO-  
SPATIAL INFORMATION  
NFEPA, SANBI

PROJECTION: WGS 19 HARTEBESHOEK 94

PROJECT TITLE: WIND AND SOLAR RENEWABLES

PROJECT NO: 47579

SCALE: 1:230,000 AT A4      DATE: 08/12/2016





DRAWN BY: SABELO DUBE      FIGURE NO:

REVIEWED BY: ASHLEA STRONG



**DISCLAIMER**  
The information on this figure was derived from various digital databases available to WSP Environmental (Pty) Ltd. All information is provided "as is" and it must be acknowledged that data, information, and maps are dynamic and in a constant state of maintenance, correction and update. WSP Environmental (Pty) Ltd cannot accept any responsibility for errors, omissions, or positional accuracy where it has not been directly responsible for the production of the data referenced. There are no warranties, expressed or implied, as to the use of this information, including the warranty of merchantability or fitness for a particular purpose. Notification of any errors will be appreciated.

**Layout**

-  PV2-SS1
- Option 1**
-  SS3-SS1
- Option 2**
-  SS3 - OuterSS
- Option 3**
-  SS3 - SS1

Source: Esri, DigitalGlobe, GeoEye, Earthstar Geographics, CNES/Airbus DS, USDA, USGS, AeroGRID, IGN, and the GIS User Community

**BIO THERM ENERGY (PTY) LTD**  
**LAYOUT MAP**  
**ENAMANDLA PV2**

**Legend**

- Rivers
- Letsoai Ridgelines
- Heritage Sensitivities
- Gamsberg Inselberg
- Enamandla PV 2
- Letsoai Enamandla Boundaries
- NFEPA Wetlands

**CBA Terrestrial**

**CBA Type**

- ESA\_T
- T1
- T2

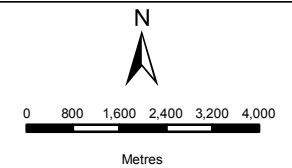
**Protected Vegetation**

- Kamiesberg Bushmanland Augrabies

**Vegetation**

**Levels of Protection**

- Least threatened



DATA SOURCE:  
 CHIEF DIRECTORATE: NATIONAL GEO-SPATIAL INFORMATION  
 NFEPA, SANBI

PROJECTION: WGS 19 HARTEBEESSHOEK 94

PROJECT TITLE: WIND AND SOLAR RENEWABLES

PROJECT NO: 47579

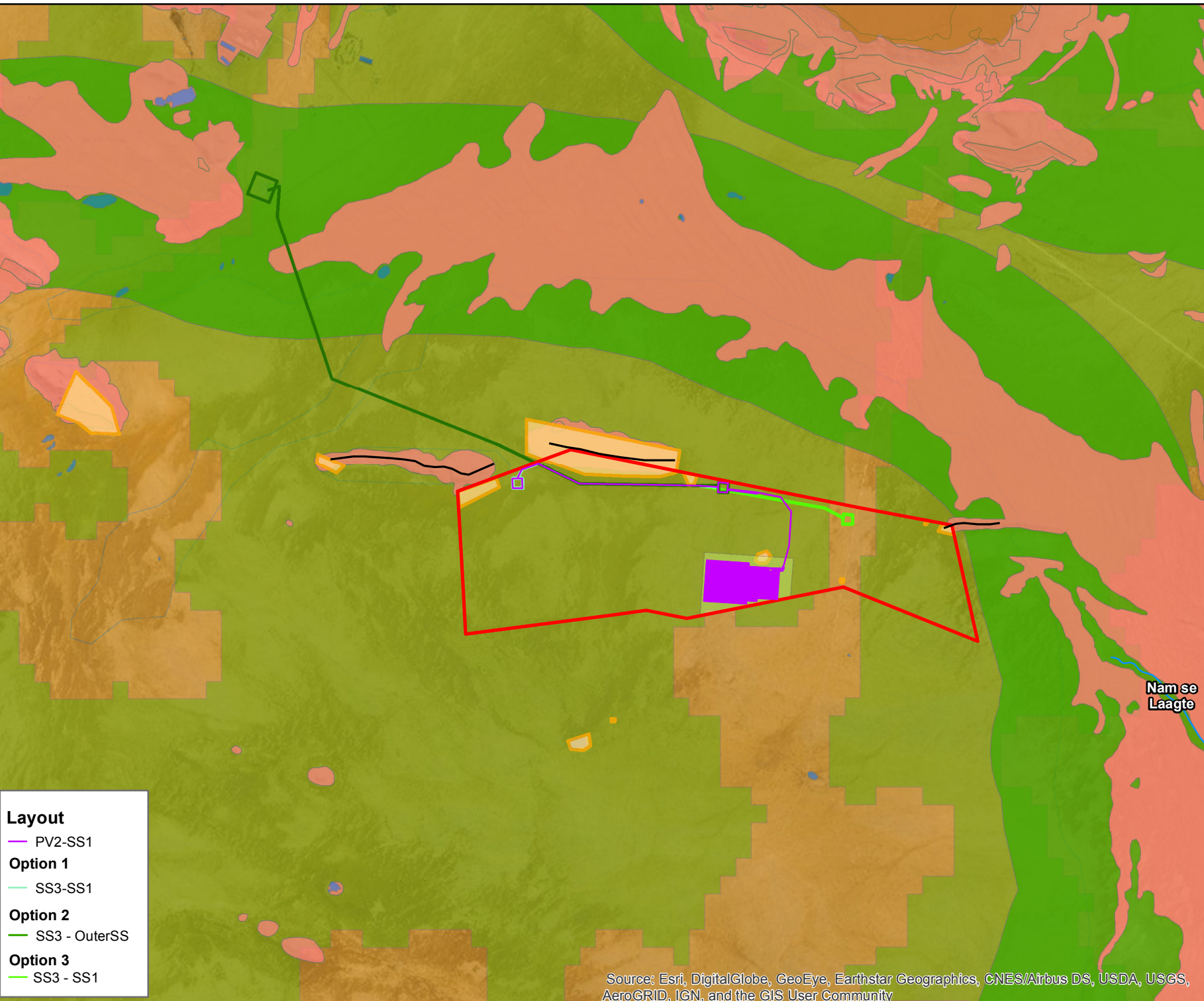
SCALE: 1:130,000 AT A4      DATE: 08/12/2016

DRAWN BY: SABELO DUBE      FIGURE NO:

REVIEWED BY: ASHLEA STRONG



**DISCLAIMER**  
 The information on this figure was derived from various digital databases available to WSP Environmental (Pty) Ltd. All information is provided "as is" and it must be acknowledged that data, information, and maps are dynamic and in a constant state of maintenance, correction and update. WSP Environmental (Pty) Ltd cannot accept any responsibility for errors, omissions, or positional accuracy where it has not been directly responsible for the production of the data referenced. There are no warranties, expressed or implied, as to the use of this information, including the warranty of merchantability or fitness for a particular purpose. Notification of any errors will be appreciated.



- Layout**
- PV2-SS1
  - Option 1**
  - SS3-SS1
  - Option 2**
  - SS3 - OuterSS
  - Option 3**
  - SS3 - SS1

Source: Esri, DigitalGlobe, GeoEye, Earthstar Geographics, CNES/Airbus DS, USDA, USGS, AeroGRID, IGN, and the GIS User Community