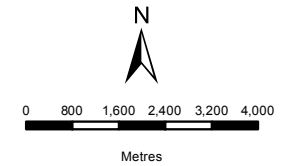


**BIO THERM ENERGY
(PTY) LTD**
SENSITIVITY MAP
ENAMANDLA PV4

Legend

- Letsoai Substations
- Homesteads
- Letsoai Ridgelines
- Heritage Sensitivities
- Gamsberg Inselberg
- Enamandla Site 4
- Development Area
- Homesteads Buffer 400m
- Loop10Rd Buffer 500m
- N14 Buffer 3km
- Letsoai Substations Footprints



DATA SOURCE:
CHIEF DIRECTORATE: NATIONAL GEO-
SPATIAL INFORMATION

PROJECTION: WGS 19 HARTEBEESSHOEK 94
PROJECT TITLE: WIND AND SOLAR RENEWABLES

PROJECT NO: 47579
SCALE: 1:130,000 AT A4 DATE: 24/11/2016
DRAWN BY: SABELO DUBE FIGURE NO:
REVIEWED BY: ASHLEA STRONG



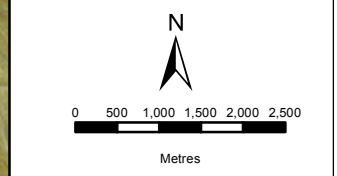
DISCLAIMER
The information on this figure was derived from various digital databases available to WSP Environmental (Pty) Ltd. All information is provided "as is" and it must be acknowledged that data, information, and maps are dynamic and in a constant state of maintenance, correction and update. WSP Environmental (Pty) Ltd cannot accept any responsibility for errors, omissions, or positional accuracy where it has not been directly responsible for the production of the data referenced. There are no warranties, expressed or implied, as to the use of this information, including the warranty of merchantability or fitness for a particular purpose. Notification of any errors will be appreciated.

- Biodiversity**
- Medium Low Sensitivity
 - Medium Sensitivity
 - Medium High Sensitivity
 - High Sensitivity
 - Very High Sensitivity
- Layout**
- PV4- SS2
 - Option 1**
 - SS3-SS1
 - Option 2**
 - SS3- OuterSS
 - Option 3**
 - SS2- SS1

Source: Esri, DigitalGlobe, GeoEye, Earthstar Geographics, CNES/Airbus DS, USDA, USGS, AeroGRID, IGN, and the GIS User Community

**BIO THERM ENERGY
(PTY) LTD**
ENAMANDLA PV4

- Legend**
- Development
 - PV4- SS2
 - Enamandla PV3
 - Option 1**
 - SS3-SS1
 - Option 2**
 - SS3-OuterSS
 - Option 3**
 - SS2-SS1



DATA SOURCE:
SOUTH AFRICAN DEPARTMENT OF RURAL
DEVELOPMENT AND LAND REFORM-
CHIEF DIRECTORATE: NATIONAL GEO-SPATIAL
INFORMATION

PROJECTION: WGS 19 HARTEBEE SHOEK 94

PROJECT TITLE:
WIND AND SOLAR RENEWABLES

PROJECT NO: 47579

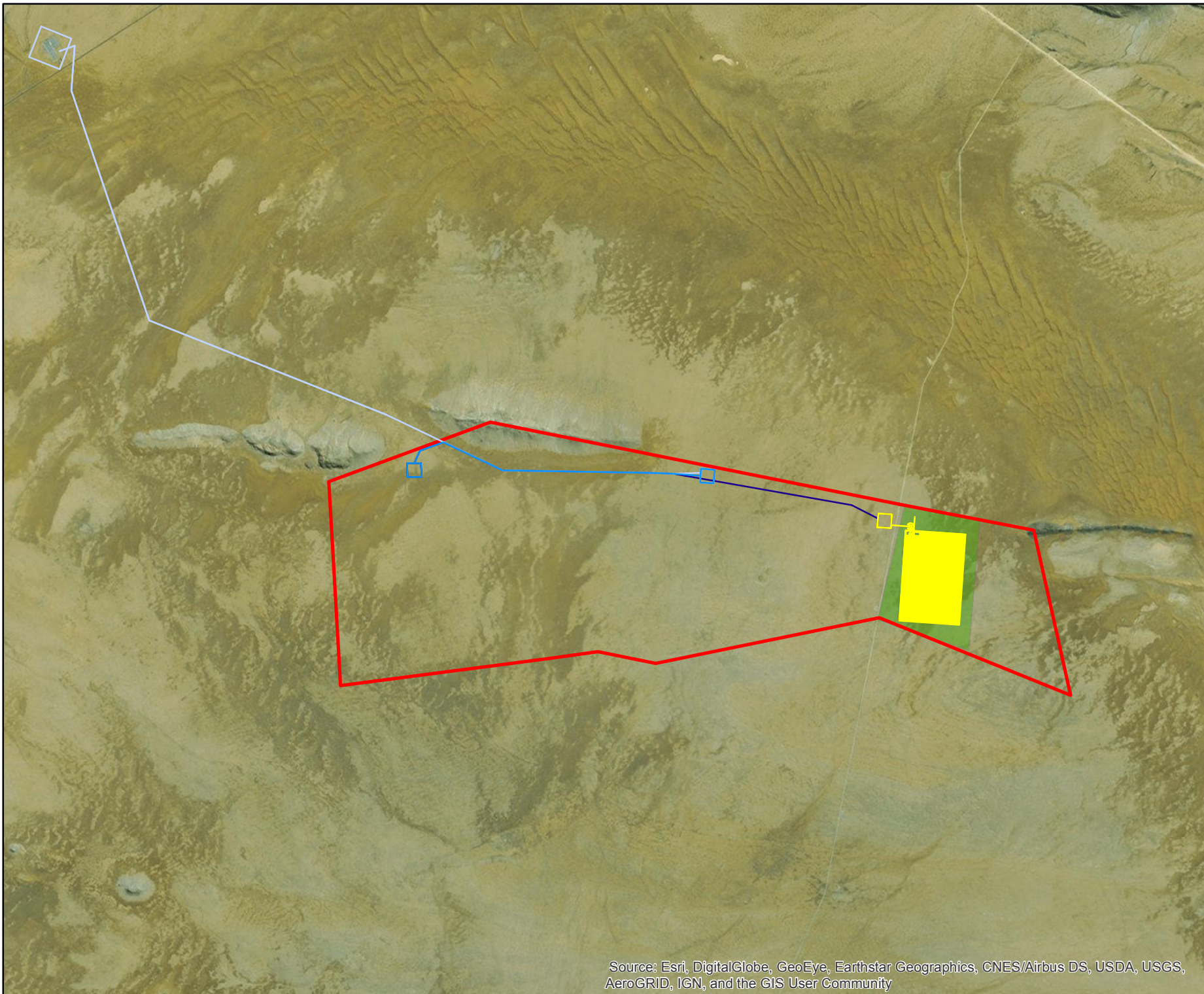
SCALE: 1:90,000 AT A4	DATE: 2016/11/22
DRAWN BY: SABELO DUBE	FIGURE NO:

REVIEWED BY: ASHLEA STRONG



DISCLAIMER

The information on this figure was derived from various digital databases available to WSP Environmental (Pty) Ltd. All information is provided "as is" and it must be acknowledged that data, information, and maps are dynamic and in a constant state of maintenance, correction and update. WSP Environmental (Pty) Ltd cannot accept any responsibility for errors, omissions, or positional accuracy where it has not been directly responsible for the production of the data referenced. There are no warranties, expressed or implied, as to the use of this information, including the warranty of merchantability or fitness for a particular purpose. Notification of any errors will be appreciated.

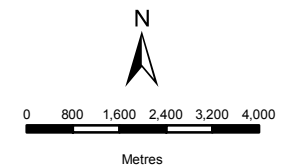


Source: Esri, DigitalGlobe, GeoEye, Earthstar Geographics, CNES/Airbus DS, USDA, USGS, AeroGRID, IGN, and the GIS User Community

BIO THERM ENERGY (PTY) LTD
LAYOUT MAP
ENAMANDLA PV4

Legend

- Letsoai Substations
 - Rivers
 - Letsoai Ridgelines
 - Heritage Sensitivities
 - Gamsberg Inselberg
 - Enamandla PV4
 - Letsoai Enamandla Boundaries
 - Loop10Rd Buffer 500m
 - N14 Buffer 3km
 - Letsoai Substations Footprints
 - NFEPA Wetlands
- SANBI Wetland Vegetation**
- Nama Karoo Bushmanland
 - Richtersveld (Skr)



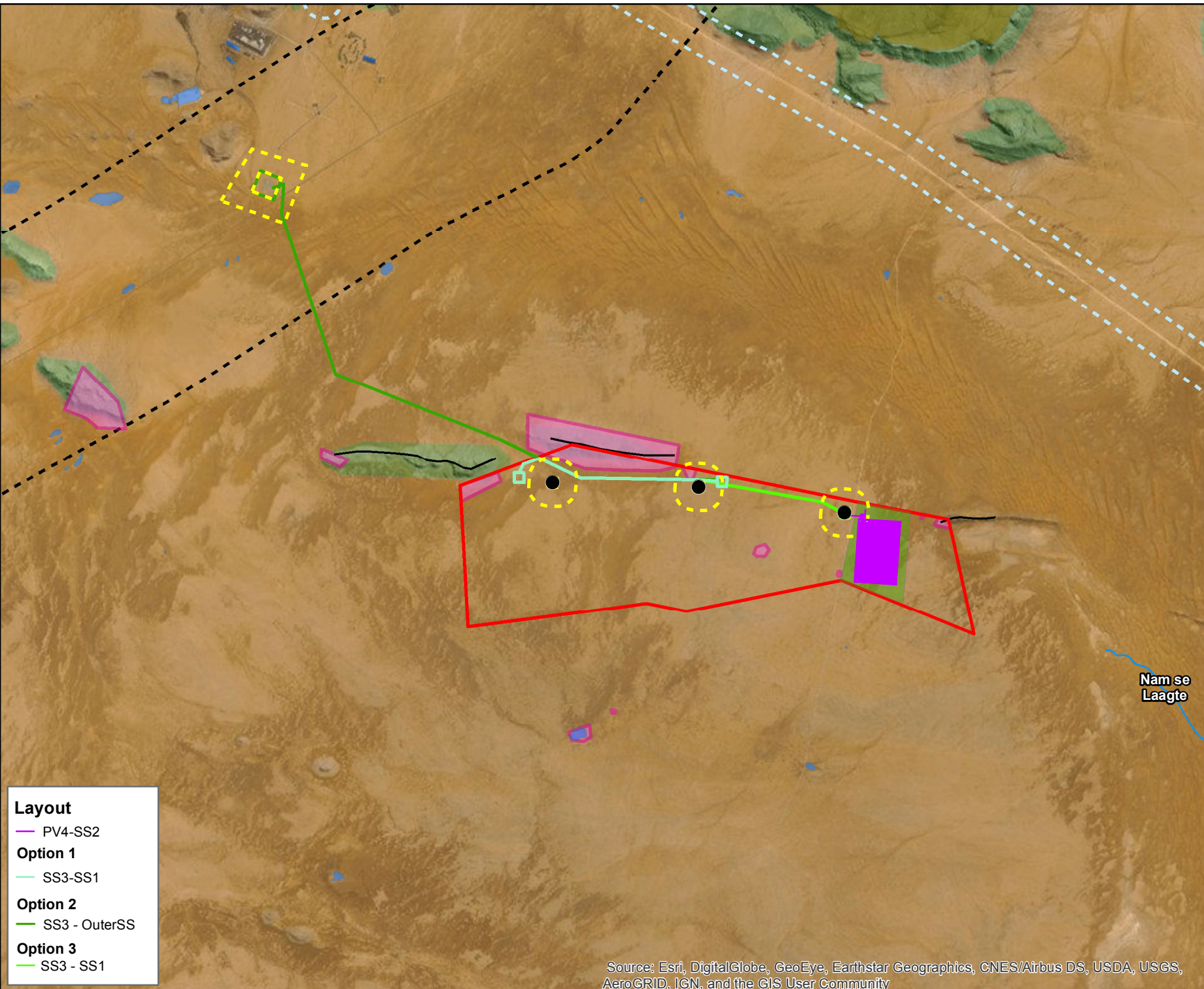
DATA SOURCE:
 CHIEF DIRECTORATE: NATIONAL GEO-SPATIAL INFORMATION
 NFEPA, SANBI

PROJECTION: WGS 19 HARTEBEESSHOEK 94
 PROJECT TITLE: WIND AND SOLAR RENEWABLES

PROJECT NO: 47579
 SCALE: 1:130,000 AT A4 DATE: 08/12/2016
 DRAWN BY: SABELO DUBE FIGURE NO:
 REVIEWED BY: ASHLEA STRONG



DISCLAIMER
 The information on this figure was derived from various digital databases available to WSP Environmental (Pty) Ltd. All information is provided "as is" and it must be acknowledged that data, information, and maps are dynamic and in a constant state of maintenance, correction and update. WSP Environmental (Pty) Ltd cannot accept any responsibility for errors, omissions, or positional accuracy where it has not been directly responsible for the production of the data referenced. There are no warranties, expressed or implied, as to the use of this information, including the warranty of merchantability or fitness for a particular purpose. Notification of any errors will be appreciated.



- Layout**
- PV4-SS2
- Option 1**
- SS3-SS1
- Option 2**
- SS3 - OuterSS
- Option 3**
- SS3 - SS1

Source: Esri, DigitalGlobe, GeoEye, Earthstar Geographics, CNES/Airbus DS, USDA, USGS, AeroGRID, IGN, and the GIS User Community

BIO THERM ENERGY (PTY) LTD
REGIONAL MAP
 ENAMANDLA PV4

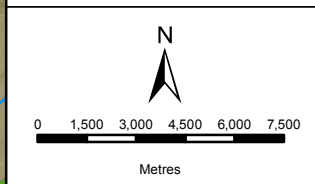
Legend

- Letsoai Substations
- Non- Perennial Rivers
- Powerlines
- Roads
- National Road
- Enamandla PV4
- ▭ Letsoai Enamandla Boundaries
- ▭ Letsoai Substations Footprints
- NFEPA Wetlands

CBA Terrestrial

CBA Type

- ESA_T
- T1
- T2



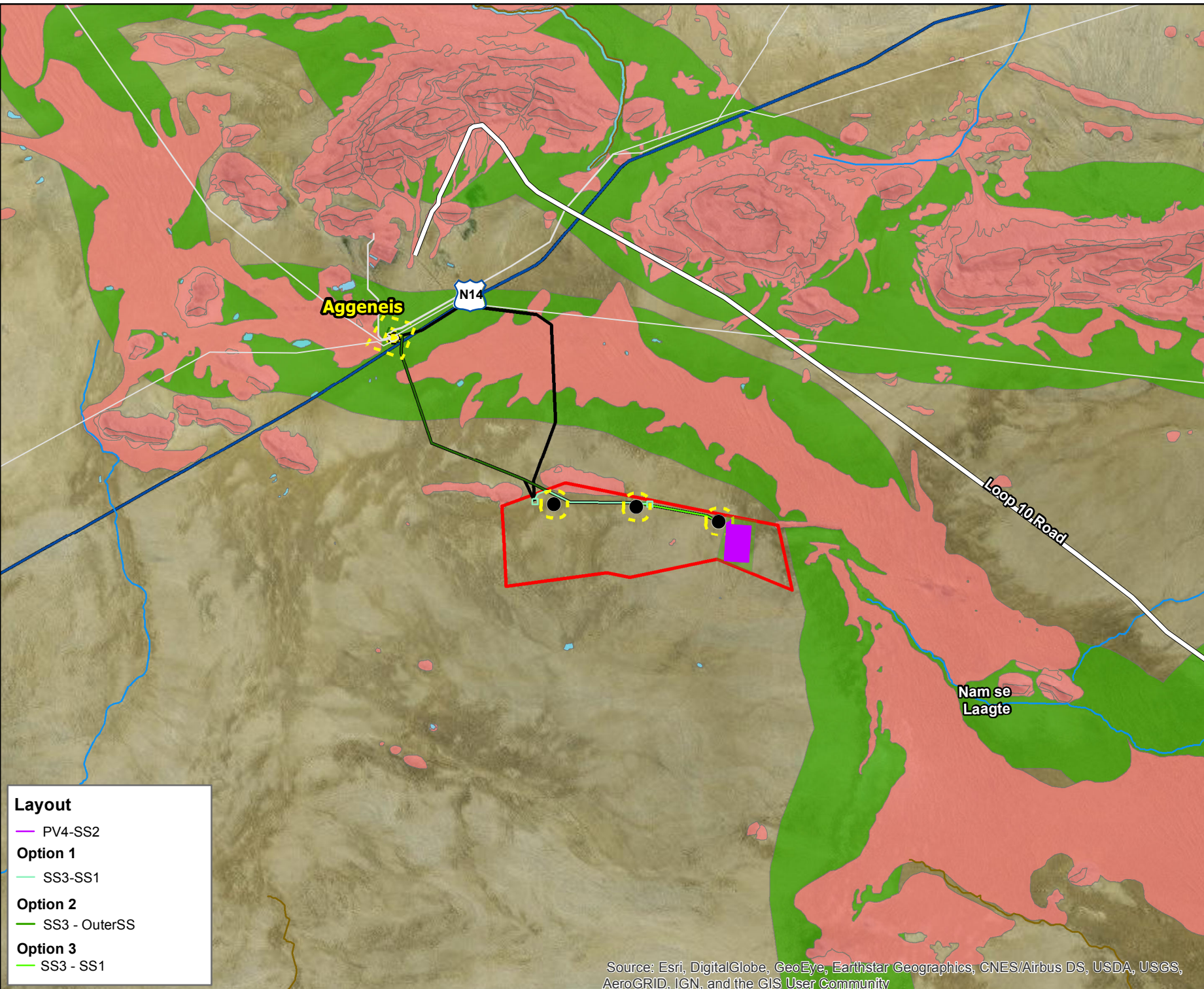
DATA SOURCE:
 CHIEF DIRECTORATE: NATIONAL GEO-SPATIAL INFORMATION
 NFEPA, SANBI

PROJECTION: WGS 19 HARTEBEESSHOEK 94
 PROJECT TITLE: WIND AND SOLAR RENEWABLES

PROJECT NO: 47579
 SCALE: 1:230,000 AT A4 DATE: 08/12/2016
 DRAWN BY: SABELO DUBE FIGURE NO:
 REVIEWED BY: ASHLEA STRONG



DISCLAIMER
 The information on this figure was derived from various digital databases available to WSP Environmental (Pty) Ltd. All information is provided "as is" and it must be acknowledged that data, information, and maps are dynamic and in a constant state of maintenance, correction and update. WSP Environmental (Pty) Ltd cannot accept any responsibility for errors, omissions, or positional accuracy where it has not been directly responsible for the production of the data referenced. There are no warranties, expressed or implied, as to the use of this information, including the warranty of merchantability or fitness for a particular purpose. Notification of any errors will be appreciated.







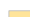



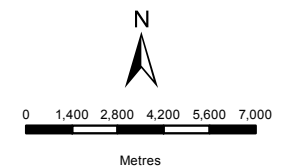
- Layout**
- PV4-SS2
 - Option 1**
 - SS3-SS1
 - Option 2**
 - SS3 - OuterSS
 - Option 3**
 - SS3 - SS1

Source: Esri, DigitalGlobe, GeoEye, Earthstar Geographics, CNES/Airbus DS, USDA, USGS, AeroGRID, IGN, and the GIS User Community

BIO THERM ENERGY (PTY) LTD
SLOPE ANALYSIS
 ENAMANDLA PV4

Legend

-  Roads
 -  National Road
 -  Enamandla PV4
 -  Letsoai Enamandla Boundaries
- Slope**
-  0 - 9%
 -  15 - 25%
 -  9 - 15%
 -  > 25%



DATA SOURCE:
 CHIEF DIRECTORATE: NATIONAL GEO-SPATIAL INFORMATION
 NFEPA, SANBI

PROJECTION: WGS 19 HARTEBESHOEK 94

PROJECT TITLE: WIND AND SOLAR RENEWABLES





PROJECT NO: 47579

SCALE: 1:230,000 AT A4	DATE: 08/12/2016
DRAWN BY: SABELO DUBE	FIGURE NO:
REVIEWED BY: ASHLEA STRONG	



DISCLAIMER
 The information on this figure was derived from various digital databases available to WSP Environmental (Pty) Ltd. All information is provided "as is" and it must be acknowledged that data, information, and maps are dynamic and in a constant state of maintenance, correction and update. WSP Environmental (Pty) Ltd cannot accept any responsibility for errors, omissions, or positional accuracy where it has not been directly responsible for the production of the data referenced. There are no warranties, expressed or implied, as to the use of this information, including the warranty of merchantability or fitness for a particular purpose. Notification of any errors will be appreciated.



- Layout**
-  PV4-SS2
 - Option 1**
 -  SS3-SS1
 - Option 2**
 -  SS3 - OuterSS
 - Option 3**
 -  SS3 - SS1

Source: Esri, DigitalGlobe, GeoEye, Earthstar Geographics, CNES/Airbus DS, USDA, USGS, AeroGRID, IGN, and the GIS User Community

BIO THERM ENERGY (PTY) LTD
LAYOUT MAP
ENAMANDLA PV4

Legend

- Rivers
- Letsoai Ridgelines
- Heritage Sensitivities
- Gamsberg Inselberg
- Enamandla PV4
- Letsoai Enamandla Boundaries
- NFEPA Wetlands

CBA Terrestrial

CBA Type

- ESA_T
- T1
- T2

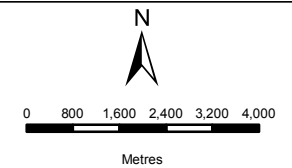
Protected Vegetation

- Kamiesberg Bushmanland Augrabies

Vegetation

Levels of Protection

- Least threatened



DATA SOURCE:
 CHIEF DIRECTORATE: NATIONAL GEO-SPATIAL INFORMATION
 NFEPA, SANBI

PROJECTION: WGS 19 HARTEBEESSHOEK 94

PROJECT TITLE: WIND AND SOLAR RENEWABLES

PROJECT NO: 47579

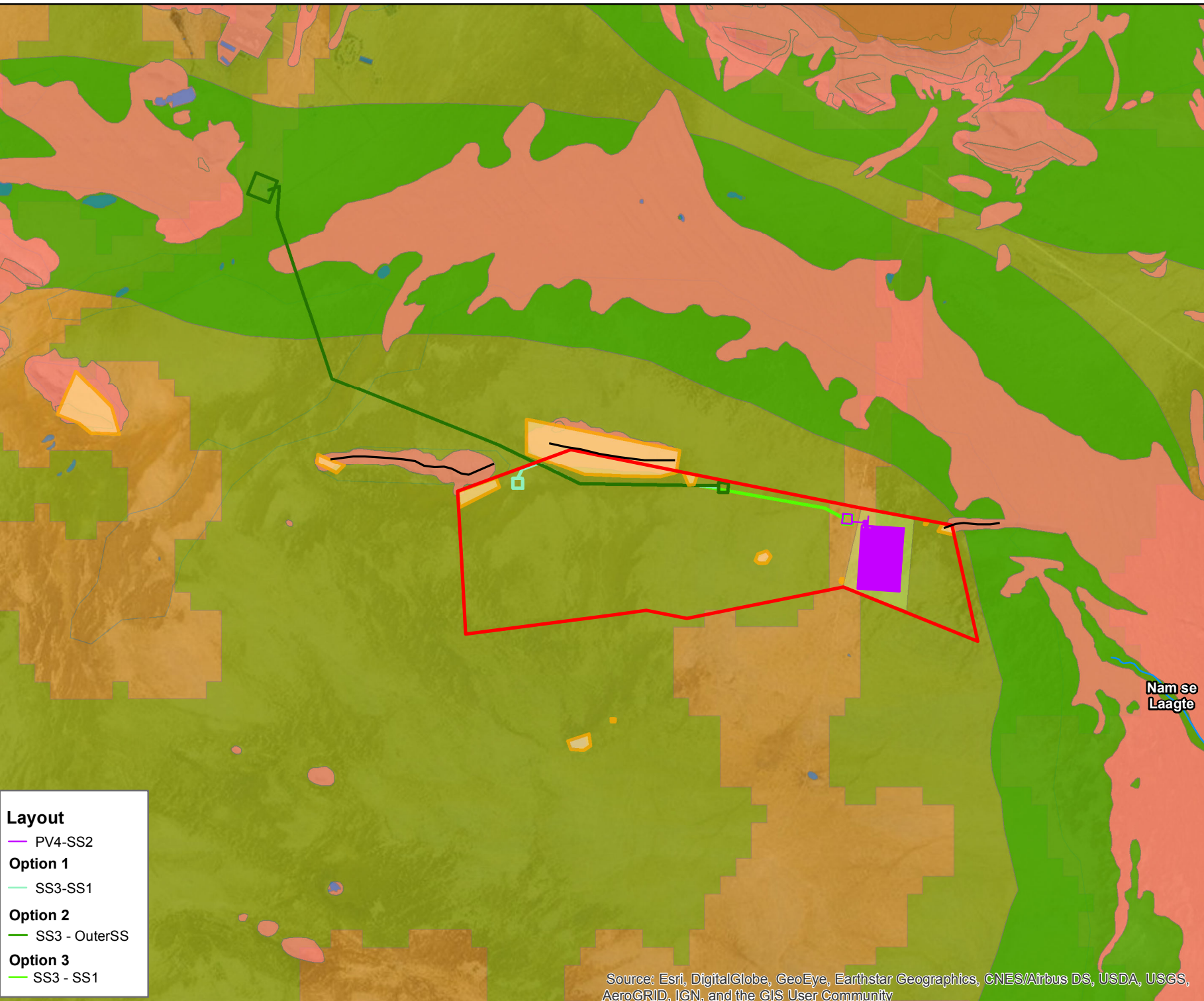
SCALE: 1:130,000 AT A4 DATE: 08/12/2016

DRAWN BY: SABELO DUBE FIGURE NO:

REVIEWED BY: ASHLEA STRONG



DISCLAIMER
 The information on this figure was derived from various digital databases available to WSP Environmental (Pty) Ltd. All information is provided "as is" and it must be acknowledged that data, information, and maps are dynamic and in a constant state of maintenance, correction and update. WSP Environmental (Pty) Ltd cannot accept any responsibility for errors, omissions, or positional accuracy where it has not been directly responsible for the production of the data referenced. There are no warranties, expressed or implied, as to the use of this information, including the warranty of merchantability or fitness for a particular purpose. Notification of any errors will be appreciated.



- Layout**
- PV4-SS2
 - Option 1**
 - SS3-SS1
 - Option 2**
 - SS3 - OuterSS
 - Option 3**
 - SS3 - SS1

Source: Esri, DigitalGlobe, GeoEye, Earthstar Geographics, CNES/Airbus DS, USDA, USGS, AeroGRID, IGN, and the GIS User Community