

Annex A

Acknowledgement of  
Receipt of Application  
Forms from DENC and  
DEA



## environmental affairs

Department:  
Environmental Affairs  
REPUBLIC OF SOUTH AFRICA

Private Bag X 447, PRETORIA, 0001 - Fedsure Building, 315 Pretorius Street, PRETORIA

Ref No.: 12/9/11/L955/8

Enquiries: Mr. Lucas Mahlangu

Tel: (012) 310 3536 Fax: (012) 310 3753 Email: [lmahlangu@environment.gov.za](mailto:lmahlangu@environment.gov.za)

[www.environment.gov.za](http://www.environment.gov.za)

ERM Southern Africa  
Postnet Suite 90  
Private Bag X12  
Tokai  
7956

Fax No. (021) 701 7900

Attention: Stuart Heather

**APPLICATION FOR A WASTE MANAGEMENT LICENCE IN TERMS OF THE NATIONAL ENVIRONMENTAL MANAGEMENT: WASTE ACT, 2008 (NO. 59 OF 2008); PROPOSED STORAGE, RECYCLING, DISPOSAL REUSE, TREATMENT OF HAZARDOUS WASTE AND CONSTRUCTION OF FACILITIES FOR BLACK MOUNTAIN MINING (GAMSBURG ZINC MINE), NORTHERN CAPE PROVINCE.**

The Department confirms having received waste license application form for the abovementioned activity on 03 July 2012.

**Please provide external coordinates of all corners of the facility within 14 days.**

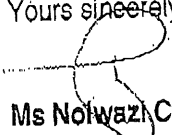
You are hereby reminded to comply with the requirements: **Regulations 67 of GN No. R 543** with regard to the period allowed for complying with the requirements of the regulations, and **Regulations 56 and 57 of GN No. R 543** with regard to the allowance of a commenting period for interested and affected parties on all reports submitted.

Your application has been assigned with a reference number (12/9/11/L955/8). Kindly quote this reference number in any future correspondence in respect of your application. The responsible officer for the processing of your application is Ms Lutendo Tshifhango who can be contacted on (012) 310 3049.

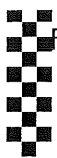
Please draw the applicant's attention to the fact that the activity may not commence prior to a waste license being granted by the Department.

Should you require further detailed information, please do not hesitate to contact this office.

Yours sincerely

  
Ms Nolwazi Cobbinah  
Acting Deputy Director-General  
Chemical and Waste Management  
Letter signed by: Mr. Lucas Mahlangu  
Designation: Deputy Director: Systems

Received Time 18. Jul. 2012, 15:10 No. 3927  
2012/07/18



the denc

Department:  
Environment & Nature Conservation  
NORTHERN CAPE PROVINCE  
REPUBLIC OF SOUTH AFRICA

Private Bag X6102, Kimberley, 8300, Medlife Towers, 1-Floor, Tel: 053 807 7300, Fax: 053 807 7328

Enquiries :  
Dipatlisiso :  
Navrae :  
Imibuzo :

Mr. A D Khakhane

Date :  
Letlha :  
Datum : 03/10/2012  
Umhla :

Reference :  
Tshupelo :  
Verwysing :  
Isalathiso :

NC/AEL/NAM/BMM01/2012

Attention: Black Mountain Mining  
Private Bag X 01  
Aggeneys  
8893

Fax: +27 (0) 54 983-9353

Dear Sir / Madam

**RE: APPLICATION FOR ATMOSPHERIC EMISSION LICENCE FOR BULK FUEL STORAGE, BLACK MOUNTAIN MINING (PTY) Ltd**

The Department acknowledges having received the incomplete, unsigned Atmospheric Emission License application for Bulk Storage of Fuel which was submitted by you in respect of the abovementioned application on the 23 August 2012.

The application has been assigned the reference number **NC/AEL/NAM/BMM01/2012**. Kindly quote this reference number in any future correspondence in respect to this application.

Kindly note the responsible officer for this project is Mr. A. D. Khakhane and can be reached on the following numbers during office hours: (053) 807 7497.

Yours faithfully,

Mr. A.D Khakhane  
Air quality & Climate Change



DEPARTMENT OF  
ENVIRONMENT AND NATURE CONSERVATION

ISEBE LEZENDALO  
NOLONDOLOZO

LEFAPHA LA ,TIKOLOGO  
LE TSHOMARELO YA TLHAGO

DEPARTEMENT VAN  
OMGEWING EN NATUUR BEWARING

90 Long Street  
Sasko Building  
Private Bag X6102  
KIMBERLEY  
8300

90 Long Street  
Sasko Building  
Inqoxowa yeposi X6102  
KIMBERLEY  
8300

90 Long Street  
Sasko Building  
Kgetsanaposo X6102  
KIMBERLEY  
8300

Long Street 90  
Privaatsak X6102  
KIMBERLEY  
8300

Tel: (053) 807 7430

Fax: (053) 831 3530

Enquiries :  
Dipatisilo : Lucille Karsten  
Navrae :  
Imibuzo :

Date :  
Letha : 27<sup>th</sup> June 2012  
Datum :  
Umhla :

Reference :  
Tshupelo : NC/EIA/NAM/KHAI/AGG/2012  
Verwysing : NCP/ EIA/0000155/2012  
Isalathiso :

Environmental Resources Management Southern Africa (Pty) Ltd  
Block A Silverwood House  
Steenberg Office Park  
Cape Town  
7945

Fax: 021-701 7900

Dear Sir/Madam

**APPLICATION FOR ENVIRONMENTAL AUTHORISATION: GN.R 544: ACTIVITY 9(I),(II), 10(I),(II), 11(I), (II), (III), (IV), (V), (VI), (VII), (VIII), (IX), (X), (XI), 13, 18, 22, 23, 26, 37, 38, 47: GN.R 544: ACTIVITY NO. 3, 5, 6, 8, 11, 15, 26: GN. R 546: ACTIVITY NO. 4, 12, 13, 14, 16, 19: APPLICATION TO UNDERTAKE ENVIRONMENTAL IMPACT ASSESSMENT FOR GAMBURG ZINK MINE AND ASSOCIATED INFRASTRUCTURE , NEAR AGGENEYS, KHAI-MA LOCAL MUNICIPALITY, NAMAKWA DISTRICT MUNICIPALITY, NORTHERN CAPE PROVINCE.**

We confirm having received the application form only of the abovementioned application on the 27<sup>th</sup> June 2012. The application has been assigned the reference numbers: **NC/EIA/NAM/KHAI/AGG/2012 and NCP/ EIA/0000155/2012.**

Kindly quote this reference numbers in any future correspondence in respect of the application.

Please draw the applicant's attention to the fact that the activity may not commence prior to an environmental authorization being granted by the Department.

Kindly note that the responsible Environmental Officer for this project is **Ms Lucille Karsten** and can be contacted at this number **(027) 718 8800.**

Yours faithfully

A.K Motsi

Intern Administration Clerk: Environmental Impact Management

Cc: **Black Mountain Mining (Pty) (Ltd)**

**054-983 9353**

Annex B

## Adverts Published in Newspapers

# Environmental and Social Impact Assessment for Proposed Construction of the Gamsberg Zinc Mine and Associated Infrastructure near Aggeneys, Northern Cape Province

**DENC Reference Number: NC/EIA/NAM/KHAI/AGG/2012-NCP/EIA/0000155/2012**

**DEA Reference Number: 12/9/11/L955/8**

**DMR Reference Number: NCS 30/5/1/2/2/1/518**

## INVITATION TO REGISTER AND COMMENT

Black Mountain Mining (Pty) Ltd, who is part of the global mining group Vedanta Resource plc, intends to establish a new zinc mine at Gamsberg with associated infrastructure in the Namakwa Region of the Northern Cape. The proposed mine will be located on properties Bloemhoek 61 Portion 1, Gams 60 Portion 1, Aroams 57 RE and Gams 60 Portion 4, approximately 14 km east of the town of Aggeneys along the eastern border of the N14 National Road. The proposed project would also include upgrading of an existing water pipeline, construction of electricity infrastructure, construction of additional housing in the town of Aggeneys, construction of tailing dams and construction of waste rock dump sites and a zinc concentrator. In addition, two options for the transportation of zinc concentrate to the Saldanha Bay Port will also be investigated and assessed.

Before the proposed project may go ahead, an Environmental and Social Impact Assessment (ESIA) needs to be completed in terms of the following legislation:

- **National Environmental Management Act (No. 107 of 1998)** (NEMA) and associated Environmental Impact Assessment (EIA) Regulations GN.R543 (as amended);
- **Minerals and Petroleum Resources Development Act (No. 28 of 2002)** (MPRDA);
- **National Water Act (No. 36 of 1998)** (NWA);
- **National Heritage Resources Act (No. 25 of 1999)** (NHRA);
- **National Environmental Management: Waste Act (No. 59 of 2008)** (NEM: WA);and
- **National Environmental Management: Air Quality Act (No. 39 of 2004)** (NEM: AQA).

The following applications have therefore been submitted to the competent authorities, namely:

- **ESIA Application** to the Department of Environment and Nature Conservation (DENC); and
- **Waste Management License (WML)** application to the National Department of Environmental Affairs (DEA).

Environmental Resources Management Southern Africa (Pty) Ltd (ERM) has been appointed as the independent environmental assessment practitioner, to undertake the ESIA and associated public participation processes.

Stakeholders are invited to register as Interested and Affected Parties (I&APs) and to participate in the ESIA and public participation processes. To register as an I&AP or to obtain more information, please contact ERM:

**Paul Monare**  
**Environmental Resources Management (ERM)**  
**Postal Address:** Postnet Suite 624, Private Bag X29,  
Gallo Manor, 2052  
**Tel:** (011) 798 4300  
**Fax:** 086 292 7318  
**Email:** [gamsberg@erm.com](mailto:gamsberg@erm.com)



**BLACK MOUNTAIN MINING (PTY) LTD**

### How can you get involved?

- Register as an Interested and Affected Party
- Propose ideas to solve problems that arise during the consultation process
- Voice your concerns about proposals and their potential impacts
- Assist with information that will contribute to a thorough study and EIA.



**Due date for comments and stakeholder registration: 29 August 2012**

# Omgewings- en Maatskaplike Invloedbepaling vir die Voorgestelde Konstruksie van die Gamsberg Sinkmyn en Verwante Infrastruktuur naby Aggeneys, Noord-Kaap Provinsie

*DONB Verwysingsnr: NC/EIA/NAM/KHAI/AGG/2012-NCP/EIA/0000155/2012*

*DOS Verwysingsnr:12/9/11/L955/8*

*DMH Verwysingsnr: NCS 30/5/1/2/2/1/518*

## UITNODIGING VIR REGISTRASIE EN KOMMENTAAR

Black Mountain Mining (Edms) Bpk, deel van wêreldwye myngroep Vedanta Resource plc, is van voorneme om die Gamsberg Sinkmyn, Konsentrator-aanleg en verwante infrastruktuur in die Namakwa-distrik te vestig. Die voorgestelde myn sal geleë wees op die eiendomme Bloemhoek 61 Gedeelte 1, Gams 60 Gedeelte 1, Aroams 57 RE, en Gams 60 Gedeelte 4, ongeveer 14 km oos van die dorp Aggeneys en aan die oostelike grens van die N14 Nasionale Pad. Die voorgestelde projek sluit ook in die opgradering van 'n bestaande waterpylyn, die oprigting van elektrisiteitsinfrastruktuur, die bou van bykomende behuising in Aggeneys of Pofadder, die bou van slykdamme en stortingsterreine vir afvalrots, en die konstruksie van 'n sink-konsentreerder. Twee opsies vir die vervoer van die sink-konsentraat na die Saldanha-baai-hawe sal ook ondersoek en beoordeel word.

Voordat die projek kan voortgaan, moet 'n Omgewings- en Maatskaplike Invloedbepaling (O&MIB) in terme van die volgende wetgewing voltooi word:

- **Wet op Nasionale Omgewingsbestuur (Wet 107 van 1998)** (soos gewysig) se Regulasies R543 van 2010 vir 'n Omgewingsinvloedbepaling (OIB).
- **Wet op die Ontwikkeling van Minerale en Petroleumhulpbronne (Nr. 28 van 2002);**
- **Nasionale Waterwet (Nr. 36 van 1998);**
- **Wet op Nasionale Erfenishulpbronne (Nr. 25 van 1999);**
- **Wet op die Nasionale Omgewing: Afvalbestuur (Nr. 59 van 2008); en**
- **Wet op die Nasionale Omgewing: Luggehalte (Nr. 39 van 2004).**

Die volgende aansoeke is dus by die bevoegde owerhede ingedien, naamlik:

- **O&MIB-aansoek** by die Departement van Omgewings- en Natuurbewaring (DONB); en
- **Aansoek vir 'n Afvalbestuurslisensie (ABL)** by die Nasionale Departement van Omgewingsake (DOS).

Environmental Resources Management Southern Africa (Edms) Bpk (ERM) is aangestel as die onafhanklike omgewingsbeoordelingspraktisyn om die O&MIB en gepaardgaande proses van openbare deelname te hanteer.

Belanghebbendes word uitgenooi om as Belanghebbende en Geaffekteerde Partye (B&GPe) te registreer, en deel te neem aan die O&MIB en die proses van openbare deelname. Tree asb. met ERM in verbinding om as 'n B&GP te registreer of meer inligting ten bekom:

**Paul Monare**

**Environmental Resources Management (ERM)**

**Posadres:** Postnet Suite 624, Privaatsak X29, Gallo Manor, 2052

**Tel:** (011) 798 4300

**Faks:** 086 292 7318

**Email:** [gamsberg@erm.com](mailto:gamsberg@erm.com)



**BLACK MOUNTAIN MINING (PTY) LTD**

### Hoe kan jy betrokke raak?

- Registreer as 'n Belanghebbende en Geaffekteerde Party
- Gee idees om probleme op te los wat tydens die konsultasieproses mag ontstaan
- Opper u bekommernisse oor die voorstelle en moontlike impakte
- Help met inligting wat sal bydra tot 'n deeglike studie en O&MIB.



**Sperdatum vir kommentaar en registrasie: 29 Augustus 2012**





# Ratelgat as erfenisterrein verklaar

ANGUS FLOWERS

**RATELGAT** – Die Griekwa Nasionale Konferensie het nou sy eie erfenisterrein. Dit nadat Dr Ivan Meyer, die Weskaapse LUR van Kultuursake en Sport, Ratelgat, onlangs tot 'n provinsiale erfenisterrein verklaar het.

Meyer sê, hierdie stuk grond, langs die Weskus, het 'n spesiale en historiese belangrikheid vir die Griekwawolk, en dus, is dit ook, belangrik vir kulturele erfenis van die Wes-Kaap.

Die LUR sê: “Die Griekwawolk se geskiedenis neem jou op 'n reis wat strek vanaf Piketberg tot in Griekwastad, dan noord van die Oranjerivier, tot by die area wat vandag bekend staan as Phillipolis.”

Die geleentheid het plaasgevind toe die Griekwa Nasionale Konvensie op hulle “heilige” grond byeengekom het, om hulde aan hulle leiers en spesifiek die verjaardag van hulle grootste leier, Opperhoof AAS le Fleur II, te herdenk.

“Vandag is ek hier om saam met julle, die Griekwawolk, hulde te bring aan die gestorwe pioniers wat destyds onder uiters moeilike omstandighede op dié plaas die Griekwa-kultuur en -tradisies laat voortleef het,” het Meyer aan die Konferensie gesê.

Die LUR het bygevoeg, dat nes die Griekwa Nasionale Konferensie, glo die Weskaapse regering ook dat die voortbestaan van hierdie kultuurerfenis vir die toekoms verseker moet word.

Intussen sê die Griekwa Nasionale Konferensie van Suid-Afrika dat die verklaring van hierdie Griekwa gewyde terrein en erfenis 'n bewys is van die volksgenote, en dat dit belangrik genoeg gevind is om 'n integrale deel uit te maak van die geskiedenis van die Wes-Kaap en ook Suid-Afrika.

Opperhoof Roderick Williams sê: “Ons Griekwa geskiedenis word gekenmerk deur 'n oorlewingsstryd wat 'n integrale deel vorm van ons volk, en Suid-Afrika se ontasbare erfenis.”



**WAGTEND ...** Lede van die Griekwa Nasionale Konferensie tydens hulle jaarlikse byeenkoms op Ratelgat, waar die gebied tot 'n provinsiale erfenisterrein verklaar is.

## Oud onderwysman te ruste gelê



**RUS IN VREDE ...** Die wyle Hendrik “Hennie” Dirkse – leerkrag, politikus en meester.

ISAAC CLOETE

**BERGSIG** – Hendrik “Hennie” Dirkse, wat einde verlede maand gesterf het, is te ruste gelê te midde van groot belangstelling. Die alombekende Namakwalandse politikus en oud-skoolhoof in Bergsig, het op 28 Julie in die Springbok Staatshospitaal gesterf, weens 'n hartaanval nadat hy vir die afgelope jaar met nierprobleme gesukkel het.

Hy moes verskeie kere Kaapstad toe reis en het onlangs vir hom 'n duur niermasjien aangekoop om sy pyn en ongemak te help verlig, het hy laas maand aan die media vertel.

Dirkse was sedert 1958, vir 35 jaar verbonde aan die Sacred Heart Primêre skool op Nababeep. In 1993 het hy hier afgetree as skoolhoof. Hierna het hy in die politiek getree en was hy van 1994-2004 LP vir die Nuwe Nasionale Party (NNP) in die Noordkaapse Wetgewer.

Vanaf 1996-2004 was hy die hoofswep van die NNP. In 2009 het Dirkse by die ANC gaan aansluit en was hy wyksraadslid

vir Bergsig tot 2011. Weens sy siekte het hy hom nie weer as wyksraadslid vir verlede jaar se munisipale verkiesing beskikbaar gestel nie.

Een van sy oud-kollegas van die NNP, Pieter Saaiman, het Dirkse as 'n afgeronde en hardgebakte gedissiplineerde politikus en onderwysman bestempel.

“Oom Hennie was kleurvol, stiptelik en 'n pionier op vele terreine. Hy was 'n meester en nie 'n meneer nie, soos so baie onderwysers hulle vandag hou. Hy was 'n taalman en het veral uit Totius se gedig, Die wêreld is ons woning nie, aangehaal,” het Saaiman tydens sy huldeblyk vertel.

Sy begrafnis is veral deur opvoeders, skoolhoofde en politici, soos, Charl de Beer en Jan Brazelle (LPs), bygewoon. Hy sal veral onthou word vir sy jare lange hidrae tot die uitbreiding van die destydse Namakwalandse Skole Kulturele Unie (NSKU) vir laerskole.

Oom Hennie, wat op Vergenoeg in die Garies-omgewing gebore was, laat sy vrou, Kate en vyf kinders, Connie, Valerie, Lionel, Gail, Lionel en Heinrich agter.

### Omgewings- en Maatskaplike Invloedbepaling vir die Voorgestelde Konstruksie van die Gamsberg Sinkmyn en Verwante Infrastruktuur naby Aggeneys, Noord-Kaap Provinsie

DONB Verwysingsnr: NC/EIA/NAM/KHAI/AGG/2012-NCP/EIA/0000155/2012  
DOS Verwysingsnr: 12/9/11/L955/8  
DMH Verwysingsnr: NCS 30/5/1/2/2/1/518  
**UITNODIGING VIR REGISTRASIE EN KOMMENTAAR**

Black Mountain Mining (Edms) Bpk, deel van wêreldwye myngroep Vedanta Resources plc, is van voorneme om die Gamsberg Sinkmyn, Konsentratie-aanleg en verwante infrastruktuur in die Namakwa-distrik te vestig. Die voorgestelde myn sal geleë wees op die eiendom Bloemhoek 61 Gedeelte 1, Gams 60 Gedeelte 1, Aroams 57 RE, en Gams 60 Gedeelte 4, ongeveer 14 km oos van die dorp Aggeneys en aan die oostelike grens van die N14 Nasionale Pad. Die voorgestelde projek sluit ook in die opgradering van 'n bestaande waterpylyn, die oprigting van elektrisiteitsinfrastruktuur, die bou van die bykomende behuising in Aggeneys of Pofadder, die bou van slykdamme en stortingssterreine vir afvalrots, en die konstruksie van 'n sink – konsentreerder. Twee opsies vir die vervoer van die sink – konsentraat na die Saldanhabaai-hawe sal ook ondersoek en beoordeel word.

Voordat die projek kan voortgaan, moet 'n Omgewings- en Maatskaplike Invloedbepaling (O&MIB) in terme van die volgende werkgewing voltooi word:

- **Wet op Nasionale Omgewingsbestuur (Wet 107 van 1998)** (soos gewysig) en Regulasies R543 van 2010 vir 'n Omgewingsinvloedbepaling (OIB)
- **Wet op die Ontwikkeling van Minerale en Petroleumhulpbronne (Nr. 28 van 2002);**
- **Nasionale Waterwet (Nr. 36 van 1998);**
- **Wet op Nasionale Erfenishulpbronne (Nr. 25 van 1999);**
- **Wet op die Nasionale Omgewing: Afvalbestuur (Nr. 59 van 2008);** en

\* **Wet op die Nasionale Omgewing: Luggehalte (Nr. 39 van 2004).**

Die volgende aansoek is dus by die bevoegde owerhede ingedien, naamlik:

- **O&MIB-aansoek** by die Departement van Omgewings- en Natuurbewaring (DONB); en
- **Aansoek vir 'n Afvalbestuurslisensie (ABL)** by die Nasionale Departement van Omgewingsake (DOS).

Environmental Resources Management Southern Africa (Edms) Bpk (ERM) is aangestel as die onafhanklike omgewingsbeoordelingspraktisyn om die O&MIB en gepaardgaande proses van openbare deelname te hanteer.

Belanghebbendes word uitgenooi om as Belanghebbende en Geaffekteerde Partye (B&GPe) te registreer, en deel te neem aan die O&MIB en die proses van openbare deelname. Tree asseblief met ERM in verbinding om as 'n B&GPe te registreer of meer inligting te bekom:

**Paul Monare**  
**Environmental Resources Management (ERM)**  
**Posadres:** Postnet Suite 624, Privaatsak X29, Gallo Manor, 2052  
**Tel:** (011) 798 4300  
**Faks:** 086 292 7318  
**Email:** gamsberg@erm.com

#### Hoe kan jy betrokke raak?

- Registreer as 'n Belanghebbende en Geaffekteerde Party
- Gee idees om probleme op te los wat tydens die konsultasieproses mag ontstaan
- Bring u bekommernisse na vore oor die voorstelle en moontlike impakte
- Help met inligting wat sal bydra tot 'n deeglike studie en O&MIB.



### VIR NUUSWENKE KONTAK

Angus Flowers

(e) angus@uhurucom.co.za

(w) 021 657 4800 • (f) 021 657 4860



Mandela dag is regoor Suid-Afrika gevier deur 67 minute aan welwillendheid te spandeer. Die Departement van Sport, Kuns en Kultuur het ook vanjaar hul deel vir Mandela Dag gedoen. Hulle het bietjie by die Oasis Dienssentrum vir Gestremdes gaan kuier. Op die foto is Limakatso Kolo (Burgemeester van Siyanda), Xhamela (Dept Sport Kuns en Kultuur) Kimberley, Mary Visagie (Oasis), mnr Smith (Distrikshoof Sport, Kuns en Kultuur) en leerder van die sentrum wat geskenke ontvang het.

# Oasis Dienssentrum bederf op Mandeladag

## HANTAM MUNISIPALITEIT

### KENNISGEWING 2012/2013/01

#### Voorsiening van Grootmaat Ultrafloc U 3500 Chemikalie

Tenders word ingewag van maatskappye wat grootmaat Ultrafloc U3500 chemikalie aan HANTAM Munisipaliteit Calvinia kan voorsien.

Tenderdokumente is verkrygbaar vanaf die Hoof Voorsieningskanaalbestuur, Hantam Munisipaliteit, PRIVAATSAK X14, 8190 of by Tel (027) 341 8500, Tenderdokumente is slegs in harde kopie beskikbaar teen 'n koste van R200,00 per dokument. Die afhaal daarvan moet self deur die voornemende tenderaar gereël word.

Verseëlde tenders gemerk: "KENNISGEWING W21012/2013/01: Voorsiening van Grootmaat Ultrafloc U3500 Chemikalie" moet voor of op **Vrydag 24 Augustus 2012 om 12:00** in die tenderbus geplaas word en sal direk daarna in die Komiteekamer van die Munisipale kantore geopen word.

Die volgende voorwaardes sal geld:

- \* Pryse moet geldig bly vir negentig (90) dae vanaf tendersluitingsdatum.
- \* Pryse moet BTW inklusief wees.
- \* Tenders sal oorweeg word in terme van die toepaslike punteformule, soos bepaal deur die Raad se Voorsieningskanaalbestuursbeleid. **Vorms, MBD 1, MBD 2, MBD 4, MBD 6.1, MBD 8 en MBD 9 moet voltooi word en u tender vergesel.**
- \* Tenders wat laat ontvang word, of onvolledig is sal nie in aanmerking geneem word nie. Tenders per faks of e-pos sal ook nie oorweeg word nie.
- \* Tenderaars moet 'n **oorspronklike belastinguitklaring-sertifikaat**, uitgereik deur die Suid-Afrikaanse Inkomstediens, saam met die tenderdokument indien.
- \* Tenderaars moet hul eie tenke voorsien en op bestaande stelsel opkoppel.

C DU PLESSIS, MUNISIPALE BESTUURDER, HOOPSTRAAT, PRIVAATSAK X14, CALVINIA, 8190



## Ek Praat Prontuit

Deur Mérie Scheepers

## Halsmisdaad!

Daar is sekere dinge wat mense doen, wat die ergste straf regverdig.

Baie van die dinge is indirekte poging tot moord – ek dink in die hof sou dit kwalifiseer as manslag.

Die eerste van hierdie soorte misdaad, het die Weskaap regering nou aangespreek: om op 'n selfoon te praat, of nog erger, 'n boodskap te lees of te tik terwyl jy bestuur.

Wat my aanbetref, ek stel voor dat hulle, saam met die manne wat in die bosse sit en mense vang wat te vinnig ry, ook manne by strategiese spersone ontplooi wat aan hierdie ploerte die swaarste boetes moontlik gee.

Die ander oortreding wat werklik ernstig aangespreek moet word, is die blatante ignoreer van spersone.

Ek moes gister weer die veld in ry om 'n gruwelongeluk te voorkom omdat 'n Gautanger nie weet waarvoor daardie dubbele wit streep op die pad gevef is nie.

As ek 'n minder bedrewe bestuurder was wat met 'n stadsmotor in plaas van 'n bakkie gery het, het my voertuig

verseker gerol toe ek van die teoppervlak af in die ongelyke veld in ry.

Die ploert het net aangery, niks gepla oor die twee "slagoffers" wat weerskante langs die pad bly staan het nie.

Konfiskeer na 'n derde oortreding hul voertuig en skort hul rybewys permanent op.

Verkoop die voertuie om vir ander slagoffers van spersone ongelukke, gidshonde en ander hulpmiddels aan te skaf om hul verpletterde lewe 'n bietjie meer gemaklik te maak.

'n Ploert skrik nie vir 'n verkeerskaartjie nie, hulle spog daarvoor.

Hierdie misdadigers sal veel harder in die bek geruk moet word voordat hulle dalk sal reageer.



### UITSONDERLIKE VEILING

**3 AUGUSTUS OM 10:00VM**

Te Ou Industriële gebied (Ou Walker's Welding gebou)

**BAIE NUWE VOORRAAD BESIGTING 1 DAG VOOR VEILING NUWE INLYSTINGS WELKOM!!**

**ALMAL WELKOM!!!**

**KONTAK ONS GERUS VIR MEER INLIGTING:**  
**FLIP VILJOEN: 079 497 9095**  
**ANNATJIE VILJOEN: 082 697 9767**  
**HANTIE ERASMUS: 076 174 9727**

Niks te groot of te klein, van u yskas tot u plaas laat ek verdwyn!

## HANTAM MUNICIPALITY

### NOTICE W/2013/01

#### Supply of Bulk Ultrafloc U3500 Chemicals

Tenders are invited from suitably companies to supply the Hantam Municipality with Bulk Ultrafloc at Calvinia in the HANTAM MUNICIPALITY.

Tender documents are available from the Head Supply Chain Management, HANTAM MUNICIPALITY, PRIVATE BAG X14, CALVINIA, 8190 or at tel 027 341 8500. Tenders are only available in hard copy at the offices in Calvinia at a cost of R200 per document. Collecting of documents is the responsibility of the contractor.

Sealed tenders clearly marked **NOTICE W2012/2013/01: Supply of Bulk Ultrafloc U3500 Chemicals** must be placed in the tender box **before or on Friday, 24 August 2012 at 12:00** and will be opened directly thereafter in the Committee Room of the Municipal Offices.

The following conditons will apply:

- \* Price(s) must be valid for at least ninety (90) days from tender closing date.
- \* Price(s) quoted must be firm & must be inclusive of VAT.
- \* Bids will be evaluated in accordance with the applicable Preferential Point Scoring System as set out in the Councils Supply Chain Management Policy. The following forms, MBD 1, MBD2, MBD 4, MBD 6.1, MBD 8 and MBD 9 must be completed and submitted with the bid.
- \* Bids that are late or incomplete will not be considered, whilst the lowest or only bid will not necessarily be accepted. Bids per fax or E-mail will also not be considered.
- \* **An original tax clearance certificate issued by SARS must accompany all bids.**
- \* Bidders must supply their own tanks and connect it to existing system.

C DU PLESSIS, MUNICIPAL MAANGER, HOPE STREET, PRIVATE BAG X14, CALVINIA, 8190

Environmental and Social Impact Assessment for Proposed Construction of Gamsberg Zinc Mine and Associated Infrastructure near Aggeneys, Northern Cape Province  
 DENC Reference Number: NC/EIA/NAM/KHAI/AGG/2012 -NCP/0000155/2012  
 DEA Reference Number: 12/9/11/L955/8  
 DMR Reference Number: NCS 30/5/1/2/2/5/18  
**INVITATION TO REGISTER AND COMMENT**

Black Mountain Mining (Pty) Ltd, who is part of the global mining group Vendata Resources plc, intends to establish a new zinc mine at Gamsberg with associated infrastructure in the Namakwa Region of the Northern Cape. The proposed mine will be located on properties Bloemhoek 61 Portion 1, Gams 60 Portion 1, Aroams 57 RE and Gams 60 Portion 4, approximately 14 km east of the town of Aggeneys along the Eastern border of the N14 National Road. The proposed project would also include upgrading of an existing water pipeline, construction of electricity infrastructure, construction of additional housing in the town of Aggeneys, construction of tailing dams and construction of waste rock dump sites and a zinc concentrator. In addition, two options for the transportation of zinc concentrate to the Saldanha Bay Port will also be investigated and assessed.

Before the proposed project may go ahead, an Environmental and Social Impact Assessment (ESIA) needs to be completed in terms of the following legislation:

- \* **National Environmental Management Act (No. 107 of 1998)** (NEMA) and Associated Assessment (EIA) Regulations GN.R543 (as amended);
- \* **Minerals and Petroleum Resources Development Act (No. 28 of 2002)** (MPRDA);
- \* **National Water Act (No. 36 of 1998)** (NWA);
- \* **National Heritage Resources Act (No. 25 of 1999)** (NHRA);
- \* **National Environmental Management: Waste Act (no. 59 of 2008)** (NEM:WA); and
- \* **National Environmental Management: Air Quality Act (No. 39 of 2004)** (NEM: AQA).

The following applications have therefore been submitted to the competent authorities, namely:

- \* **ESIA Application** to the Department of Environmental and Nature Conservation (DENC); and
- \* **Waste Management License (WML)** application to the National Department of Environmental Affairs (DEA).

Environmental Resources Management Southern Africa (Pty) Ltd (ERM) has been appointed as the independent environmental assessment practitioner, to undertake the ESIA and associated public participation processes.

Stakeholders are invited to register as Interested and Affected Parties (I&APs) and to participate in the ESIA and public participation processes. To register as an I&AP or to obtain more information, please contact ERM:

**Paul Monare**  
**Environmental Resources Management (ERM)**  
 Postal Address: Postnet Suite 624, Private Bag X29, Gallo Manor, 2051  
**Tel:** (011) 798 4300  
**Fax:** 086 292 7318  
**Email:** gamsberg@erm.com

**How can you get involved**

- \* Register as an Interested and Affected Party
- \* Propose ideas to solve problems that arise during the consultation process
- \* Voice your concerns about proposals and their potential impacts
- \* Assist with information that will contribute to a thorough study and EIA.

**Due date for comments and stakeholder registration: 29 August 2012**



### Omgewings - en Maatskaplike Invloedbepaling vir die Voorgestelde Konstruksie van die Gamsberg Sinkmyn en Verwante Infrastruktuur naby Aggeneys, Noord-Kaap Provinsie

DONB Verwysingsnr: NC/EIA/NAM/KHAI/AGG/2012-NCP/EIA/0000155/2012  
DOS Verwysingsnr: 12/9/11/L955/8  
DMH Verwysingsnr: NCS 30/5/1/2/2/1/518

#### UITNODIGING VIR REGISTRASIE EN KOMMENTAAR

Black Mountain Mining (Edms) Bpk, deel van wêreldwye myngroep Vendata Resources plc, is van voorneme om die Gamsberg Sinkmyn, Konsentratie-aanleg en verwante infrastruktuur in die Namakwa-distrik te vestig. Die voorgestelde myn sal geleë wees op die eiendom Bloemhoek 61 Gedeelte 1, Gams 60 Gedeelte 1, Aorams 57 RE, en Gams 60 Gedeelte 4, ongeveer 14km oos van die dorp Aggeneys en aan die oostelike grens van die N14 Nasionale Pad. Die voorgestelde projek sluit ook in die opgradering van 'n bestaande waterpyplyn, die oprigting van elektrisiteitsinfrastruktuur, die bou van die bykomende behuising in Aggeneys of Pofadder, die bou van slykdamme en stortingssterreine vir afvalrots, en die konstruksie van 'n sink - konsentreeerder. Twee opsies vir die vervoer van die sink - konsentratie na die Saldanhabaai-hawe sal ook ondersoek en beoordeel word.

Voordat die projek kan voortgaan, moet 'n Omgewings - en Maatskaplike Invloedbepaling (O&MIB) in terme van die volgende wergewing voltooi word:

- \* Wet op Nasionale Omgewingsbestuur (Wet 107 van 1998) (soos gewysig) en Regulasies R543 van 2010 vir 'n Omgewingsinvloedbepaling (OIB)
- \* Wet op die Ontwikkeling van Minerale en Petroleumhulpbronne (Nr. 28 van 2002);
- \* Nasionale Waterwet (Nr. 36 van 1998);
- \* Wet op Nasionale Erfenisbronne (Nr. 25 van 1999);
- \* Wet op die Nasionale Omgewing: Afvalbestuur (Nr. 59 van 2008); en
- \* Wet op die Nasionale Omgewing: Luggehalte (Nr. 39 van 2004).

Die volgende aansoeke is dus by die bevoegde owerhede ingedien, naamlik:

- \* O&MIB-aansoek by die Departement van Omgewings - en Natuurbewaring (DONB); en
- \* Aansoek vir 'n Afvalbestuurslisensie (ABL) by die Nasionale Departement van Omgewingsake (DOS).

Environmental Resources Management Southern Africa (Edms) Bpk (ERM) is aangestel as die onafhanklike omgewingsbeoordelingspraktisyn om die O&MIB en gepaardgaande proses van openbare deelname te hanteer.

Belanghebbendes word uitgenooi om as Belanghebbende en Geaffekteerde Partye (B&GPe) te registreer, en deel te neem aan die O&MIB en die proses van openbare deelname. Tree asb. met ERM in verbinding om as 'n B&GPe te registreer of meer inligting te bekom:

Paul Monare

Environmental Resources Management (ERM)

Posadres: Postnet Suite 624, Privaatsak X29,

Gallo Manor, 2052

Tel: (011) 798 4300

Faks: 086 292 7318

Email: gamsberg@erm.com



#### Hoe kan jy betrokke raak?

- \* Registreer as 'n Belanghebbende en Geaffekteerde Party
- \* Gee idees om probleme op te los wat tydens die konsultasieproses mag ontstaan
- \* Bring u bekommernisse na vore oor die voorstelle en moontlike impakte
- \* Help met inligting wat sal bydra tot 'n deeglike studie en O&MIB.



Sperdatum vir kommentaar en registrasie: 29 Augustus 2012

## CJ'S SPORTSBAR

**Thursday:** NABABEEP  
Dj. Nitefly  
Free Entrance

**Friday:** DJ Immie  
Admission: R10

**Saturdays:** Dj. Dotti  
Admission: R10



**Kom kyk rugby op ons 'Big Screen'!**



**Sundays:**  
Karaoke with Raya  
Free Entrance, Prices could be won!

## CLASS of '82 VAN BSSS HOU RE-UNIE

**D**ie matrikulante van 1982 (CLASS OF 82) van Hoërskool

**S A van Wyk gaan van 21 – 24 September 2012 'n re-unie hou. Dit belooft om 'n baie aangename ervaring te wees en dit val ook saam met die skool se veertigste bestaansjaarvieringe.**

Wat dit nog meer spesiaal sal maak is die feit dat hierdie groep 30 jaar gelede die skoolbanke verlaat het, en vir baie sal dit 'n eerste blye herontmoeting wees.

Die reëlingskomitee versoek alle skoolmaats om vroegetydig te registreer om die reëlings te vergemaklik. Presiese getalle is dus van uiterste belang om

genoegsame besprekings te doen en te verseker dat elkeen waarde vir sy / haar geld sal kry.

Die koste beloop **R400,00** per persoon.

'n Bankrekening is spesiaal vir hierdie geleentheid geopen sodat direkte inbetalings vroegetydig gedoen kan word, en die besonderhede is soos volg:

**EERSTE NASIONALE BANK**  
**REKENINGNAAM: BSSS82**  
**REK. NO.: 62361804860**  
**TAKKODE: 200306**  
**VERWYSING: U EIE NAAM EN VAN**

Vir enige verdere inligting kan u gerus **Allan Fortuin** skakel by **084 448 1478**.

## OLIMPICS VIER 40jr BESTAAN

**Olimpics Sokkerklub van Okiep vier vanjaar sy 40ste bestaansjaar. Om dit te vier gaan 'n 5-dae lange Sportfees aangebied word wat afskop vanaf 29 Augustus 2012 tot en met 02 September 2012.**

Die voorlopige program sien soos volg uit:

**29 Augustus 2012:** Groot kerkdiens by St Augustines Kerk waar alle afgestorwe spelers en ondersteuners met die aansteek van kerse vereer sal word. Na die diens sal 'n ligte ete voorberei word by Okiep Hoërskool. Foto's van die afgestorwenes sal te sien wees.

**30 Augustus 2012:** 'n Groot onthaal waar spelers en ondersteuners hulle kan

geniet met heerlike musiek. Toesprake en opvoerings sal ook aangebied word.

**31 Augustus 2012:** 'n Sokker toernooi skop af die aand by die Okiep Sportgronde.

**01 September 2012:** Die toernooi gaan voort.

**02 Augustus 2012:** Die afsluiting van die toernooi en fees.



Meer inligting vorentoe. Alle spelers, oud-spelers en ondersteuners kry julle reg!



Annex C

## Pictures of Site Notices

# Omgewings- en Maatskaplike Invloedbepaling van die Voorgestelde Konstruksie van die Gamsberg Sinkmyn en Verwante Infrastruktuur naby Aggeneys, Provinsie Noord-Kaap

*DONB Verwysingsnr: NC/EIA/NAM/KHAI/AGG/2012-NCP/EIA/0000155/2012*

*DOS Verwysingsnr: 12/9/11/L955/8*

*DMH Verwysingsnr: NCS 30/5/1/2/2/1/518*

Black Mountain Mining (Edms) Bpk, deel van Vedanta plc, gee hiermee kennis van die indiening van aansoeke aan onderskeidelik: die Departement van Omgewings- en Natuurbewaring (DONB) kragtens die Wet op Nasionale Omgewingsbestuur (Nr. 107 van 1998) (soos gewysing) en die Regulasies vir Omgewingsinvloedbepalings (OIB) (GK. R543) vir 'n Omgewingsmagtiging; die Nasionale Departement van Omgewingsake (DOS) vir 'n Afvalbestuurslisensie kragtens die Wet op die Nasionale Omgewing: Afvalbestuur (Nr. 59 van 2008); die Departement van Minerale Hulpbronne vir 'n wysiging aan die bestaande Omgewingbestuursprogram kragtens die Wet op Ontwikkeling van Minerale en Petroleumhulpbronne (Nr. 28 van 2002); en die Departement van Waterwese vir 'n Watergebruikslisensie kragtens die Nasionale Waterwet (Nr. 36 of 1998). Hierdie aansoeke is vir die voorgestelde vestiging van die Gamsberg Sinkmyn, Konsentrator-aanleg en verwante infrastruktuur.

Die voorgestelde myn sal geleë wees op die eiendom Bloemhoek 61 Gedeelte 1, Gams 60 Gedeelte 1, Aroams 57 RE, en Gams 60 Gedeelte 4, ongeveer 14 km oos van die dorp Aggeneys en aan die oostelike grens van die N14 Nasionale Pad.

## KOMMENTAAR AANGEVRA

Environmental Resources Management (ERM) is as die onafhanklike omgewingbeoordelingspraktisyn aangestel wat verantwoordelik sal wees vir die Omgewings- en Maatskaplike Invloedbepaling, asook die gepaardgaande proses van openbare deelname. Indien u as 'n Belanghebbende en Geaffekteerde Party in die voorgestelde projek wil registreer of verdere inligting wil ontvang, word u versoek om u kontakbesonderhede aan die persoon hieronder te voorsien.

### OPENBARE DEELNAME EN POSADRES VIR KOMMENTAAR

**Paul Monare**

Environmental Resources Management (ERM)

Postnet Suite 624, PrivaatsakX29, Gallo Manor, 2052

Tel: (011) 798 4300, Faks: 086 292 7318

e-pos: [gamsberg@erm.com](mailto:gamsberg@erm.com)



# Environmental and Social Impact Assessment for the Proposed Construction of the Gamsberg Zinc Mine and Associated Infrastructure near Aggeneys, Northern Cape Province

*DENC Reference Number: NC/EIA/NAM/KHAI/AGG/2012-NCP/EIA/0000155/2012*

*DEA Reference Number: 12/9/11/L955/8*

*DMR Reference Number: NCS 30/5/1/2/2/1/518*

Black Mountain Mining (Pty) Ltd, part of Vedanta plc, hereby gives notice of their submission of applications to: the Department of Environment and Nature Conservation in terms of the National Environmental Management Act, (No. 107 of 1998) (as amended) and the Environmental Impact Assessment (EIA) Regulations (GN.R543) for Environmental Authorisation; the National Department of Environmental Affairs (DEA) for a Waste Management License in terms of the National Environmental Management: Waste Act (No. 59 of 2008); the Department of Mineral Resources for an amendment to the existing Environmental Management Programme in terms of the Minerals and Petroleum Resources Development Act (No. 28 of 2002); and the Department of Water Affairs for a Water Use License in terms of the National Water Act (No. 36 of 1998) ); and the Department of Environment and Nature Conservation in terms of National Environmental Management: Air Quality Act (No. 39 of 2004); respectively. These applications are for the proposed establishment of the Gamsberg Zinc Mine, Concentrator Plant and associated infrastructure.

The proposed mine will be located on properties Bloemhoek 61 Portion 1, Gams 60 Portion 1, Aroams 57 RE and Gams 60 Portion 4, approximately 14 km east of the town of Aggeneys along the eastern border of the N14 National Road.

## PUBLIC COMMENT INVITED

Environmental Resources Management (ERM) has been appointed as the independent environmental assessment practitioner, to undertake the Environmental and Social Impact Assessment and associated public participation processes. To formally register as an Interested and Affected Party for the proposed project or to receive further information, please submit your details to the contact details given below.

### PUBLIC PARTICIPATION AND RETURN ADDRESS FOR COMMENTS

**Paul Monare**

Environmental Resources Management (ERM)  
Postnet Suite 624, Private Bag X29, Gallo Manor, 2052  
Tel: (011) 798 4300, Fax: 086 292 7318  
e-mail: [gamsberg@erm.com](mailto:gamsberg@erm.com)



**BLACK MOUNTAIN MINING (PTY) LTD**

July 2012



**Project no: 0164903**

# Environmental and Social Impact Assessment for Proposed Construction of the Gamsberg Zinc Mine and Associated Infrastructure near Aggeneys, Northern Cape Province

## *Location of site notices*

Photos	Placement Date	Description
	30 July 2012	Aggeneys Kaffee
	30 July 2012	Aggeneys Recreational Club
	30 July 2012	Aggeneys: Black Mountain Head Office
	30 July 2012	Gamsberg Project Area
	30 July 2012	Pella Library



	<p>30 July 2012</p>	<p>Pella Municipal Offices</p>
	<p>30 July 2012</p>	<p>Pofadder Library</p>
	<p>30 July 2012</p>	<p>Pofadder Municipal Offices</p>

Annex D

Background Information  
Document and Associated  
Cover Letter and  
Registration Form

# Agtergrond–Inligtingsdokument



**BLACK MOUNTAIN MINING**

## Omgewings- en Maatskaplike Invloedbepaling (O&MIB) vir die Voorgestelde Konstruksie van die Gamsberg Sinkmyn en Verwante Infrastruktuur, Noord-Kaap Provinsie

### Inleiding

Black Mountain Mining (Edms) Bpk (hierna Black Mountain genoem), wat deel is van Vedanta Resources Plc, is van voorneme om die Gamsberg Sinkmyn, Konsentrator-aanleg en verwante infrastruktuur in die Namakwa-distrik te vestig. Die voorgestelde myn sal geleë wees op die eiendom Bloemhoek 61 Gedeelte 1, Gams 60 Gedeelte 1, Aroams 57 RE, en Gams 60 Gedeelte 4, ongeveer 14 km oos van die dorp Aggeneys en aan die oostelike grens van die N14 Nasionale Pad (sien *Figuur 1*). Die voorgestelde terrein staan in die algemeen bekend as Gamsberg, en word gekenmerk deur 'n ovaalvormige eilandberg, ongeveer 220 meters hoër as die omliggende vlaktes.

Voordat enige konstruksie kan begin moet goedkeuring ingevolge die volgende wetgewings bekom word: die *Wet op die Ontwikkeling van Minerale en Petroleumhulpbronne* (Nr. 28 van 2002), die *Wet op Nasionale Omgewingsbestuur* (Nr. 107 van 1998), die *Wet op Nasionale Omgewingsbestuur: Afvalbestuur* (Nr. 59 van 2008), die *Wet op Nasionale Omgewingsbestuur: Luggehalte* (Wet 39 van 2004), die *Wet op Nasionale Erfenishulpbronne* (Nr. 25 van 1999) en die *Nasionale Waterwet* (Nr. 36 van 1998). Die bevoegde owerheid in hierdie Omgewings- en Maatskaplike Invloedbepaling (O&MIB) is die MEC van Noord-Kaapse Provinsiale Departement van Omgewing- en Natuurbewaring (DONB).

### O&MIB vir Gamsberg Sinkmyn en Verwante Infrastruktuur

Environmental Resources Management Southern Africa (Edms) Bpk (ERM) is as die onafhanklike omgewingbeoordelings-praktisyn aangestel wat verantwoordelik sal wees vir die O&MIB, asook die gepaardgaande proses van openbare deelname.

DONB Verwysingsnr: NC/EIA/NAM/KHAI/AGG/2012-NCP/EIA/0000155/2012

DOS Verwysingsnr: 12/9/11/L955/8

DMH Verwysingsnr: NCS 30/5/1/2/2/1/518

**SPERDATUM VIR KOMMENTAAR EN REGISTRASIE: 29 AUGUSTUS 2012**





## Doel van hierdie dokument

Hierdie dokument gee 'n kort uiteensetting van die voorgestelde projek en die manier waarop Belanghebbende en Geaffekteerde Partye (B&GPe) by die O&MIB-proses betrokke kan raak.

Bykomende dokumente sal op verskillende stadiums van die omgewingsinvloedbepalings-proses aan B&GPe beskikbaar gestel word, wat B&GPe verder die geleentheid sal bied om kwessies te identifiseer en voorstelle te maak.

## Agtergrond tot die projek

Sinkneerslae is in 1972 deur die O'Okiep Copper Company (Newmont) by Gamsberg ontdek. Gold Fields het Newmont se belang in Gamsberg in 1988 gekoop, maar a.g.v. ongunstige marktoestande is die myn nie ontwikkel nie.

Anglo American Corporation het die terrein in 1998 bekom en die aanvanklike en volledige uitvoerbaarheidstudies gedoen om die lewensvatbaarheid van die ontginning van die sinkneerslag te bepaal.

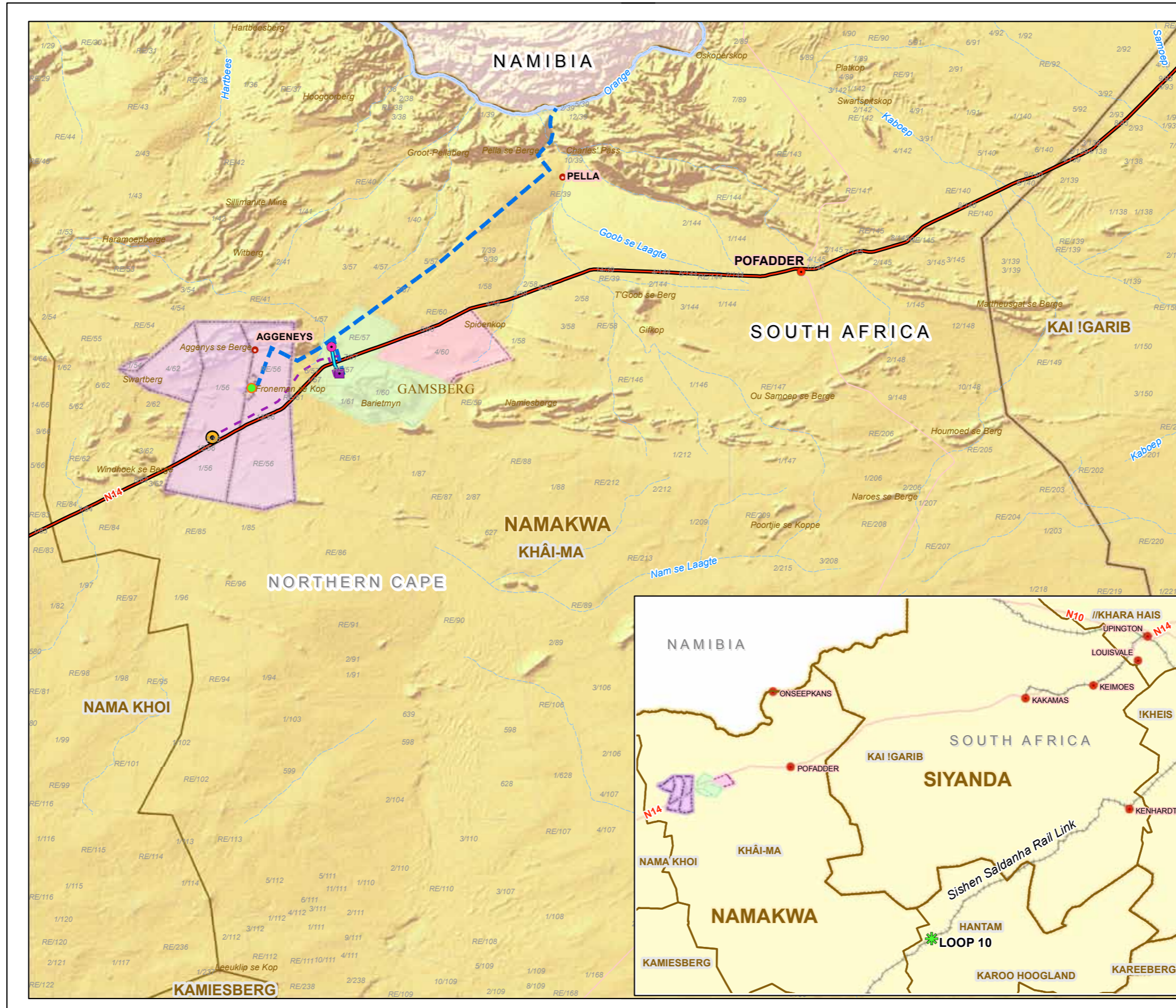
Die oorspronklike Omgewingbestuursprogram (OBP) vir oopgroefontginning by Gamsberg is in Januarie 2001 goedgekeur onder die Wet op die Ontwikkeling van Minerale en Petroleumhulpbronne. In 2002 is die OBP gewysig en is goedkeuring gegee om 'n klein gedeelte van die neerslag ondergronds te myn. 'n Verdere wysiging in 2009 het goedkeuring verleen aan bopgrondse ontginning langs die noord-oostelike deel van Gamsberg.

Heelwat komponente en verwante infrastruktuur is egter sedert die voltooiing van die oorspronklike O&MIB tot die proses toegevoeg, en meeste van die vorige goedkeuringe het intussen verstryk. Verdere ondersoek is in 2009 gedoen om die nuutste regsverpligtinge en die gapings in kennis tussen die oorspronklike O&MIB van 2000 en die nuwe projekbeskrywing te bepaal. Hierdie ondersoek het aangetoon dat 'n volledige O&MB-proses nodig is vir die bykomende wetlike en inligtingvereistes.

Vedanta Resources Plc het in Februarie 2011 Black Mountain Mining (Edms) Bpk vanaf Anglo American Corporation, wat die Gamsbergterrein besit het, aangekoop. As gevolg van die veranderings in omgewingswetgewing en aan die oorspronklike beskrywing van die projek, moet 'n nuwe O&MIB-proses van stapel gestuur word. Die O&MIB-proses sal die gapings in kennis identifiseer en alle potensiele impakte omvattend beoordeel. Verwys na die Liggingkaart, ingesluit as *Figuur 1* (sien ommes), vir 'n voorstelling van die ligging van die voorgestelde projek.

Die voorstel om die sinkmyn by Gamsberg te vestig is gebaseer op die wêreldwye verbetering in die mark vir sink sedert 2000.





**Legend**

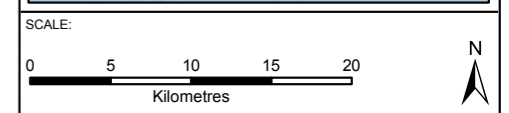
- Main Town
- Towns
- Loop 10
- Existing Aggenys Sub-Station
- Dams
- Cadastral Boundaries
- Black Mountain Mine Area - Mining Licence
- Gamsberg Project Area - Mining Licence
- Gamsberg Project Area - Surface Rights
- Local Municipalities
- District Municipalities
- Proposed Water Pipeline
- Area of Proposed Additional Housing

**Power Supply Option 1**

- New Concentrator Plant Sub-Station (66kV/11kV)
- New Gamsberg Sub-Station (220kV/66kV)
- 66kV Distribution Lines

**Power Supply option 2**

- New Gamsberg Sub-Station (220kV/66kV)
- Proposed 66kV Distribution Line



TITLE:

**Location of the Gamsberg Study Area**

CLIENT:

**Black Mountain Mining (Pty) Ltd**

DATE: July 2012	CHECKED: NB	PROJECT: 0164903
DRAWN: LDT	APPROVED: SP	SCALE: 1: 400 000
DRAWING: Location of Gamsberg Study Area_Rev3.mxd		REV: 3
ERM Building 32, The Woodlands, Woodlands Drive, Woodmead, 2148 Johannesburg, South Africa Tel: +27 (0)11 798 4300 Fax: +27 (0)11 804 2289		 SIZE: <b>A3</b>

It is unlawful for any firm or individual to reproduce copyrighted maps, graphics or drawings, in whole or in part, without permission of the copyright owner, ERM Southern Africa (Pty) Ltd ©

Figuur 1. Gamsberg Sinkmyn Liggingskaart

## Projekbeskrywing

Black Mountain beoog om h sinkmyn en verwante infrastruktuur by Gamsberg, naby die dorp Aggeneys, te vestig. As gevolg van die lae-graad sinkreserwes in die gebied, moet die sink eers versterk word voordat dit na wêreldmarkte uitgevoer kan word. Bykomend hiertoe is h versekerde bron van water en elektrisiteit nodig om aan die behoeftes van die mynbedrywighe te kan voldoen. As gevolg van hierdie vereistes, word die volgende voorgestel:

### Ontginning van sink

Die vestiging van die Gamsberg Sinkmyn met h verwagte uitsetvermoë van ongeveer 10 miljoen ton per jaar (verwerkingstonnemaat). Die verwagte lewensduur van die voorgestelde myn is ongeveer 20 jaar. Black Mountain stel ondersoek in na ander ontginningstegnieke om die mees toepaslike benadering vanuit h finansiële, tegniese en omgewingsoogpunt te bepaal. Hierdie aspekte sal meer omvattend tydens die Omvangbepalingsfase bespreek word.

### Konsentrator-aanleg

Die bou van h Sink Konsentrator-aanleg met h totale verwerkingskapasiteit van 10 miljoen ton per jaar. Die presiese ligging van die Konsentrator-aanleg sal tydens die O&MIB-proses bepaal word.

### Afvalbestuur

Black Mountain beoog om slykdamme en stortingsterreine vir afvalrots te bou met die doel om die afval wat die ontginningsproses tot gevolg het, te bestuur. Die presiese ligging van die slykdamme en stortingsterreine vir afvalrots sal tydens die O&MIB-proses bepaal word. Geskikte terreine sal ook vir nie-minerale afval ontwikkel word.

### Watervoorsiening

Black Mountain beoog om die waterbehoefes van die voorgestelde sinkmyn aan te spreek deur die Pella Drift Waterraad te nader om die bestaande waterpyplyn vanaf die onttrekkingspunt by Pella langs die Oranjerivier na die voorgestelde myn op te gradeer.

### Elektrisiteitsvoorsiening

Black Mountain beoog om die elektrisiteitsbehoefes van die voorgestelde sinkmyn aan te spreek deur die oprigting van

### Geaffekteerde Omgewing

*Die voorgestelde sinkmyn sal geleë wees in die Noord-Kaap Provinsie, naby die dorp Aggeneys. Die werkloosheidsyfer in die Noord-Kaap Provinsie is 26,7 persent, wat hoër is as die nasionale gemiddelde van 23,9 persent (volgens StatsSA). Vorige ondersoeke wat uitgevoer is het bevestig dat die voorgestelde myn geleë is in 'n streek wat gekenmerk word met 'n hoë vlak van Vetplant Karoo-plantegroei en word dus beskou as globale biodiversiteit warm kol (Conservation International, 2012).*

'n nuwe 220kv/66kV substasie langs die bestaande 220kV transmissielyn aan die noordelike gedeelte van die N14 (ongeveer 2 km wes van die Gamsbergterrein). 'n Tweede 66KV/11kV substasie sal by die mynaanleg opgerig word. Twee (2) 66kV transmissielyne sal die N14 Nasionalepad kruis om die twee substasies te koppel, ten einde in die kragbehoefes van die voorgestelde myn en verwante infrastruktuur te voorsien.

Black Mountain sal alternatiewelik 'n nuwe 66 kV transmissielyn en verwante infrastruktuur bou vanaf die bestaande Aggeneys substasie tot by die voorgestelde myn area.

### Vervoer van Sink-konsentraat

Om die projek haalbaar te maak, moet Black Mountain die sink-konsentraat vanaf die voorgestelde myn na die hawe by Saldanhaabaai neem vir die uitvoer daarvan. Die volgende twee waarskynlike vervoeropsies sal tydens die O&MIB-proses ondersoek word, naamlik:

- **Vervoeropsie 1:** Sink-konsentraat sal via h bestaande grondpad vanaf die voorgestelde myn na Ring 10 van die bestaande Sishen-Saldanha spoorweglyn geneem word. Die konsentraat sal dan by Ring 10 gelaai en per spoor na die Saldanhaabaai-hawe geneem word; of
- **Vervoeropsie 2:** Laai die sink-konsentraat op vragmotors en vervoer dit *via* die bestaande N14 en N7 Nasionale Paaie na die Saldanhaabaai-hawe.

### Behuising

Werkseleenthede sal tydens die konstruksie- en bedryfsfase van die voorgestelde projek geskep word. Black Mountain beoog om bykomende behuisingseenhede in die dorp Aggeneys op te rig. Black Mountain is van voornemens om hulle huis eienaarskap skema uit te brei in ooreenstemming met die ontginninghandves. Die presiese aantal werkseleenthede wat geskep sal word sal tydens die O&MIB-proses bevestig word.



'n Tipiese konsentrator-aanleg



'n Tipiese slykdam



'n Tipiese stortingsterrein vir afvalrots

## Omgewings- en Maatskaplike Invloedbepaling

Die doelwitte van die O&MIB-proses is om die volgende te voorsien:

- Genoegsame inligting aan B&GPe sodat hulle 'n begrip het van die potensiële omgewings- en sosio-ekonomiese impakte wat die voorgestelde projek tot gevolg het, en geleentheid het om op die O&MIB-proses kommentaar te lewer;
- Inligting aan die ingenieurspan te voorsien sodat hulle doeltreffende maatreëls by die ontwerp en uitvoering van die projek kan inbou om negatiewe impakte te verminder en voordele van die projek te verbeter; en
- Genoegsame inligting aan die regulatoriese owerhede te voorsien sodat hulle 'n ingeligte besluit kan neem.

### Regsverpligtinge

Die voorgestelde O&MIB-proses sal uitgevoer word volgens die *Wet op Nasionale Omgewingsbestuur* (Wet 107 van 1998) (soos gewysig) se Regulasies R543 van 2010 vir 'n Omgewingsinvloedbepaling (OIB). Die volgende wetgewing is ook op die voorgestelde projek van toepassing en daar sal aan hierdie regsverpligtinge voldoen moet word as deel van 'n geïntegreerde O&MIB-proses:

- *Wet op die Nasionale Omgewing: Afvalbestuur* (Nr. 59 van 2008);
- *Wet op die Nasionale Omgewing: Biodiversiteit* (Nr. 10 van 2004);
- *Wet op Nasionale Omgewingsbestuur: Luggehalte* (Nr. 39 van 2004);
- *Nasionale Waterwet* (Nr. 36 van 1998);
- *Wet op Nasionale Erfenishulpbronne* (Nr. 25 van 1999); en
- *Wet op die Ontwikkeling van Minerale en Petroleumhulpbronne* (Nr. 28 van 2002).

Die omvattende regsverpligtinge sal tydens die Omvangbepalingsfase ondersoek word. ERM is egter van voorneme om 'n geïntegreerde regulatoriese proses vir bogenoemde wetgewings te volg. Neem egter kennis dat daar slegs aan die wetlike vereistes ingevolge die Nasionale Waterwet voldoen kan word nadat 'n Omgewingsmagtiging uitgereik is.





### Openbare Deelname

As rolspeleer of moontlike B&GP word u uitgenooi om deel te wees van hierdie O&MIB-proses. Openbare deelname is 'n sleutelkomponent van omgewingsbesluitneming en sal dwarsdeur die O&MIB-proses plaasvind. *Figuur 2* hieronder verskaf meer inligting oor die onderskeie fases in die O&MIB-proses, asook die tydsduur daarvan en verwante aktiwiteite.



*Figuur 2: Proses van Openbare Deelname*

### U registrasie as 'n B&GP en kommentaar op die voorgestelde projek is 'n belangrike deel van ons proses.

Wat die potensiele positiewe en negatiewe omgewings- en maatskaplike impakte betref wat tydens die O&MIB-proses ondersoek moet word, word u uitgenooi om enige kwessies wat u bekommer aan ons voor te lê, asook geleenthede te identifiseer en voorstelle te maak. U word uitgenooi om te registreer as B&GP vir die openbare deelname proses van die projek. Voltooi asseblief die meegaande registrasievorm en stuur dit terug na ERM sou u besluit om te registreer (kontak besonderhede hier onder).

**Ons bedank u vir u deelname.**

### openbare deelname en posadres vir kommentaar

Paul Monare

Environmental Resources Management (ERM)

Postnet Suite 624, Privaatsak X29, Gallo Manor, 2052

Tel: (011) 798 4300 • Faks: 086 292 7318

[www.erm.com/Gamsberg-ESIA](http://www.erm.com/Gamsberg-ESIA)

e-pos: [gamsberg@erm.com](mailto:gamsberg@erm.com)



# Background Information Document



## BLACK MOUNTAIN MINING

### Environmental and Social Impact Assessment [ESIA] for Proposed Construction of the Gamsberg Zinc Mine and Associated Infrastructure Northern Cape Province

## Introduction

Black Mountain Mining (Pty) Ltd (herein referred to as Black Mountain), is part of Vedanta Resources Plc, intends to establish the Gamsberg Zinc Mine, Concentrator Plant and associated infrastructure in the Namakwa District. The proposed site is located on properties Bloemhoek 61 Portion 1, Gams 60 Portion 1, Aroams 57 RE and Gams 60 Portion 4, approximately 14 km east of the town of Aggeneys, along the eastern border of the N14 (see *Figure 1*). The proposed site is commonly referred to as Gamsberg, and is characterised by an oval shaped inselberg 220 meters above the surrounding plains.

Prior to commencing with construction, approvals are required in terms of the *Mineral and Petroleum Resources Development Act* (No. 28 of 2002), the *National Environmental Management Act* (No. 107 of 1998), the *National Environmental Management: Waste Act* (No. 59 of 2008), *National Environmental Management: Air Quality Act* (No. 39 of 2004), *National Heritage Resources Act* (No. 25 of 1999) (NHRA) and the *National Water Act* (No. 36 of 1998). The competent authority for the Environmental and Social Impact Assessment (ESIA) process is the MEC of the Department of Environment and Nature Conservation (DENC) of the Northern Cape Province.

Environmental Resources Management Southern Africa (Pty) Ltd (ERM) has been appointed as the independent environmental assessment practitioner, to undertake the ESIA and associated public participation processes.

DENC Reference Number: NC/EIA/NAM/KHAI/AGG/2012-NCP/EIA/0000155/2012

DEA Reference Number: 12/9/11/L955/8

DMR Reference Number: NCS 30/5/1/2/2/1/518

**DUE DATE FOR COMMENT AND REGISTRATION: 29 AUGUST 2012**





## Purpose of this document

This document serves to provide you with a brief introduction to the proposed project and the manner in which Interested and Affected Parties (I&APs) can become involved in the ESIA process.

Additional documents will be available at various stages during the environmental assessment process to provide I&APs with information and further opportunities to raise issues of concern and suggestions for enhanced benefits.

## Project background

In 1972, zinc deposits were discovered at Gamsberg by O'Okiep Copper Company (Newmont). In 1998 Gold Fields bought Newmont's interest in Gamsberg, however the mine was not developed due to unfavourable market conditions.

In 1988, Anglo American Corporation acquired the site and completed prefeasibility and feasibility investigations in order to explore the viability of mining the zinc deposit.

The original Environmental Management Programme (EMPr) for open-pit mining at Gamsberg was approved in January 2001. An amendment to this EMPr was approved in 2002 to mine a small part of the deposit underground. An additional amendment was made to the EMPr in 2009 for surface exploration along the north eastern section of Gamsberg.



Since the completion of the original ESIA process, additional project components and associated infrastructure were introduced into the project description and the bulk of the approvals obtained previously have lapsed.

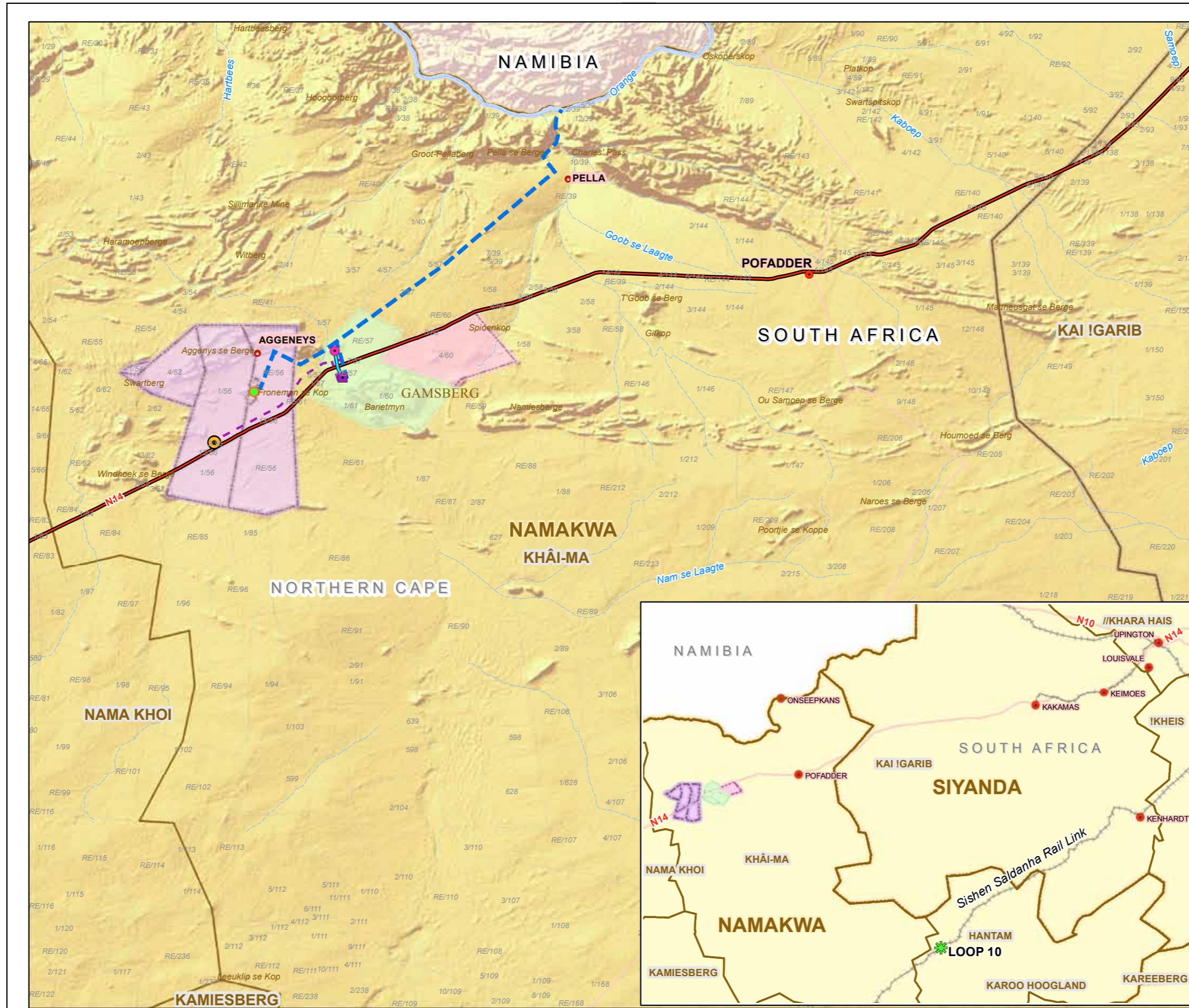
Further investigations were undertaken in 2009 to review the new legal requirements and the gaps in knowledge between the original ESIA of 2000 and the new project description. The investigation identified the additional legal and information requirements to undertake a comprehensive ESIA process.

In February 2011, Vedanta Resources Plc acquired Black Mountain Mining (Pty) Ltd., from Anglo American Corporation, who owned the Gamsberg site. Due to changes to the environmental legislation and original project description, a new ESIA process will need to be undertaken.

The ESIA process will address the gaps in knowledge identified and provide a detailed assessment of potential impacts. Refer to Locality Map (see *Figure 1* overleaf) for a representation of the location of the proposed project.

The proposal to establish a zinc mine at Gamsberg is based on the global zinc market improving since 2000.





**Legend**

- Main Town
- Towns
- Loop 10
- Existing Aggenys Sub-Station
- Dams
- Cadastral Boundaries
- Black Mountain Mine Area - Mining Licence
- Gamsberg Project Area - Mining Licence
- Gamsberg Project Area - Surface Rights
- Local Municipalities
- District Municipalities
- Proposed Water Pipeline
- Area of Proposed Additional Housing

**Power Supply Option 1**

- New Concentrator Plant Sub-Station (66kV/11kV)
- New Gamsberg Sub-Station (220kV/66kV)
- 66kV Distribution Lines

**Power Supply option 2**

- New Gamsberg Sub-Station (220kV/66kV)
- Proposed 66kV Distribution Line

**Scale:** 0 5 10 15 20 Kilometres

**Title:** Location of the Gamsberg Study Area

**Client:** Black Mountain Mining (Pty) Ltd

DATE: July 2012	CHECKED: NB	PROJECT: 0164903
DRAWN: LDT	APPROVED: SP	SCALE: 1 : 400 000

**Drawing:** Location of Gamsberg Study Area\_Rev3.mxd **REV:** 3

**ERM**  
 Building 32,  
 The Woodlands,  
 Woodlands Drive,  
 Woodmead, 2148  
 Johannesburg, South Africa  
 Tel: +27 (0)11 798 4300  
 Fax: +27 (0)11 804 2289

**Projection:** Geographic, Datum: WGS84  
**Source:** NGI - Chief Directorate National Geo-Spatial Information, SANBI, EnPAT  
**Inset:** ESRI Data and Maps **SIZE:** A3

It is unlawful for any firm or individual to reproduce copyrighted maps, graphics or drawings, in whole or in part, without permission of the copyright owner, ERM Southern Africa (Pty) Ltd ©

Figure 1: Gamsberg Zinc Mine Locality Map

## Project description

Black Mountain intends to establish a zinc mine and associated infrastructure at Gamsberg, close to the town of Aggeneys. However, due to the low grade zinc reserve present in the region, the zinc ore would need to be concentrated before exporting to global markets. In addition, a secure water and power supply would also be needed in order to meet the requirements of an operational mine. Based on the above requirements, the following is proposed:

### Zinc Mining

The establishment of the Gamsberg Zinc Mine with an expected output capacity of approximately 10 million tons per year (beneficiation tonnage). The proposed mine is expected to have a life span of approximately 20 years. Black Mountain is exploring different mining techniques to determine the most suitable approach to balance the financial, technical and environmental considerations of the proposed project. This will be presented in further detail during the Scoping Phase.

### Concentrator Plant

Construction of a Zinc Concentrator Plant with a total processing capacity of 10 million tons per year. The precise location of the Concentrator Plant will be determined during the course of the ESIA process.

### Waste Management

In order to manage the waste streams generated from the mining process, Black Mountain intends to construct tailings dams and waste rock dump sites. The precise location of the tailings dams and waste rock dump sites will be determined during the course of the ESIA process. Non-mineral waste streams will also be generated and appropriate facilities constructed.

### Water Supply

In order to fulfil the water requirements of the proposed zinc mine, Black Mountain intends to approach Pelladrift Water Board regarding upgrading of the existing water pipeline from the Pella abstraction point along the Orange River to the proposed mine.

### Electricity Supply

In order to meet the energy requirements of the proposed project, Black Mountain intends to construct a new 220kV/ 66kV substation adjacent to an existing 220 kV transmission line,

### Affected Environment:

*The proposed zinc mine will be located within the Northern Cape Province, near the town of Aggeneys. The unemployment rate in the Northern Cape Province is 26.7 percent, which is above the national average of 23.9 percent (according to StatsSA). Previous investigations undertaken have confirmed that the proposed mine is located in a Region that is characterised with a high level of Succulent Karoo vegetation and is thus considered to be a global biodiversity hotspot (Conservation International, 2012).*

along the northern end of the N14 (approximately 2 km west of the Gamsberg mine site). A second 66kV/11kV sub-station will be constructed at the Gamsberg mine site. Two (2) 66 kV distribution lines will be constructed across the N14 National Road to link the two proposed sub-stations in order to meet the energy requirements of the proposed mine and associated infrastructure. Alternatively BMM will construct a new 66 kV distribution line and associated infrastructure from the existing Aggeneys substation to the proposed mine site.

### Transportation of Zinc Concentrate

To ensure project viability, Black Mountain needs to transport the zinc concentrate from the proposed mine to the Saldanha Bay Port for export. Two potential transport options will be investigated during the ESIA process, which are as follows:

- Transport Option 1: Zinc concentrate to be transported via an existing gravel road from the proposed mine to Loop 10 of the existing Sishen–Saldanha railway line. At Loop 10, the concentrate will be loaded and transported by rail to Saldanha Bay Port; or
- Transport Option 2: Load zinc concentrate onto trucks and transport the zinc concentrate via the existing N14 and N7 National Roads to the Saldanha Bay Port.

### Housing

The proposed project is expected to result in the creation of employment opportunities during the construction and operational phases. In order to house the expected workforce, Black Mountain intends to construct additional housing units in the town of Aggeneys. Black Mountain intends to expand its home ownership scheme in compliance with the mining charter. The exact number of employment opportunities that is expected to be created will be confirmed during the course of the ESIA process.



A typical zinc concentrator plant



A typical tailings dam



A typical waste rock dump

## Environmental and Social Impact Assessment

The objectives of the ESIA process are to provide:

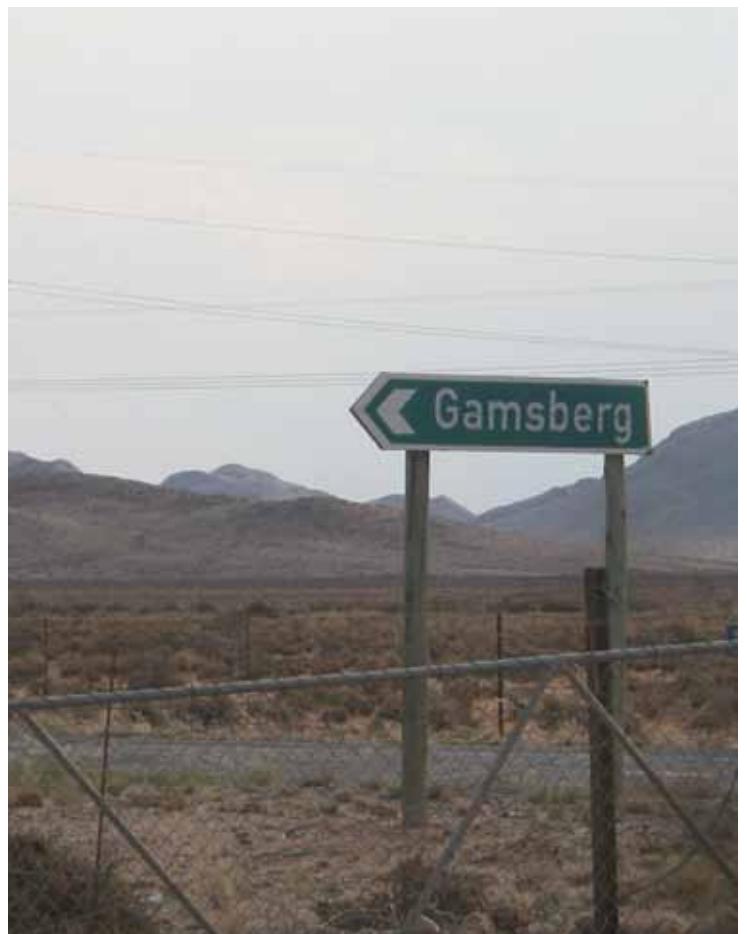
- I&APs with adequate information to understand the potential environmental and socio-economic impacts associated with the proposed project and opportunities for them to comment on the ESIA process;
- the engineering team with information that will assist them to incorporate effective measures into the design and execution of the project to minimise negative impacts and enhance benefits of the project; and
- the regulatory authorities with sufficient information to serve as a basis for sound decision making.

### Legislative Requirements

The proposed ESIA process will be undertaken in terms of the *National Environmental Management Act* (No. 107 of 1998) (as amended) Environmental Impact Assessment (EIA) Regulations R543 of 2010. In addition, the following legislation will also be applicable to the proposed project and the related legislative requirements will need to be fulfilled as part of an integrated ESIA process:

- *National Environmental Management: Waste Act* (No. 59 of 2008);
- *National Environmental Management: Biodiversity Act* (No. 10 of 2004);
- *National Environmental Management: Air Quality Act* (No. 39 of 2004);
- *National Water Act* (No. 36 of 1998);
- *National Heritage Resources Act* (No. 25 of 1999); and
- *Minerals and Petroleum Resources Development Act* (No. 28 of 2002).

Detailed legal requirements will be presented during the Scoping Phase. However, it is the intention of ERM to undertake an integrated regulatory process with respect to the abovementioned legislation. Please note, however, that the legal requirements in terms of the *National Water Act* can only be fulfilled once an Environmental Authorisation has been issued.



## Public Participation

As a stakeholder or potential I&AP you are invited to be part of the ESIA process. Public participation is a key component of environmental decision-making and will take place throughout the ESIA process. *Figure 2* below provides detail on the various ESIA phases, timelines and associated activities.

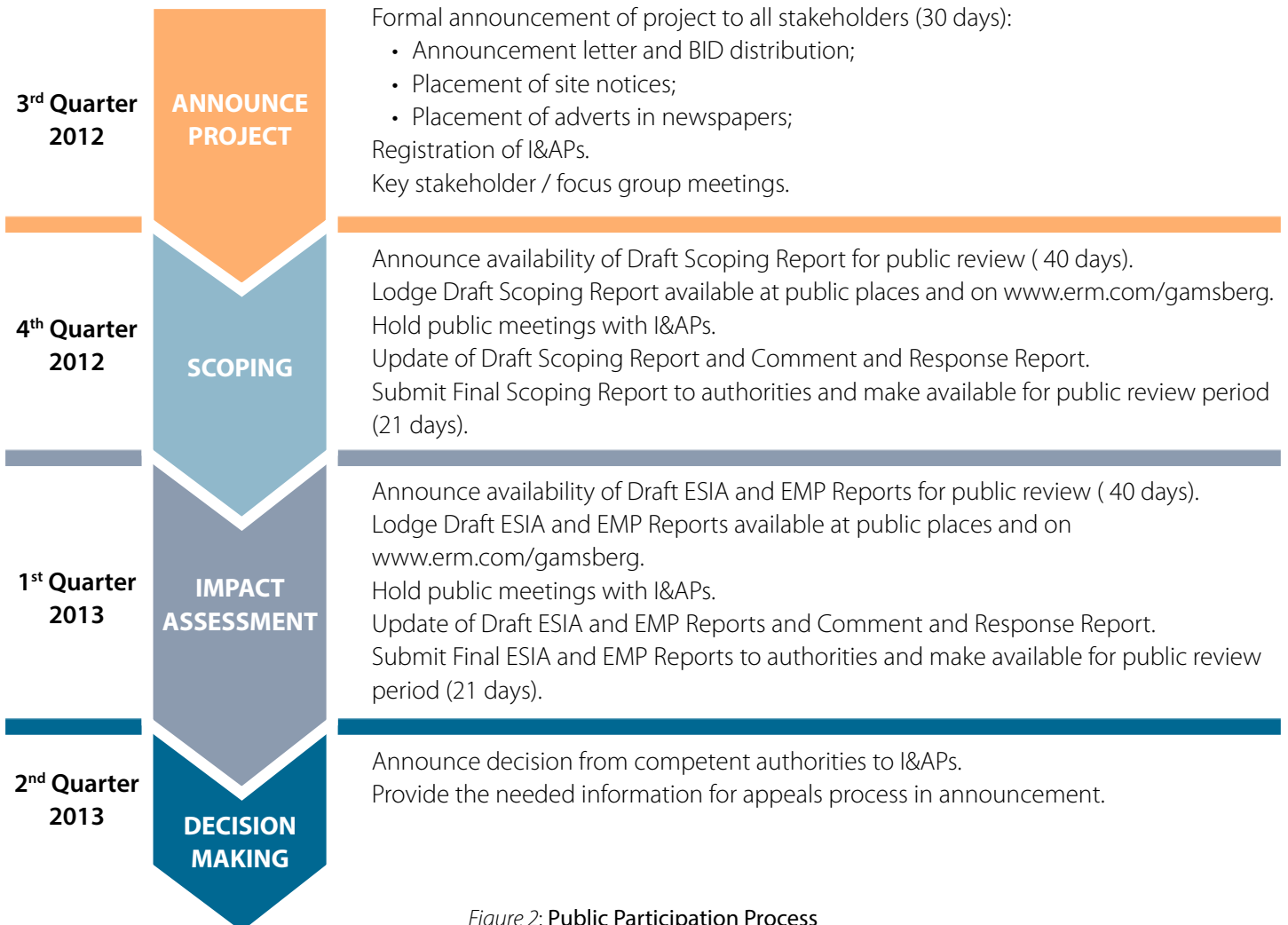


Figure 2: Public Participation Process

### Your registration as an I&AP and comments are important to this process.

You are invited to raise issues of concern, identify opportunities and provide suggestions associated with the proposed project, pertaining to potential positive or negative environmental and social impacts which should be investigated during the ESIA process. You are invited to register as an IAP for PPP for this project. If you wish to be registered, please complete attached registration form and return to ERM (details below).

**We thank you for your participation.**



#### public participation and return address for comments

Paul Monare  
 Environmental Resources Management (ERM)  
 Postnet Suite 624, Private Bag X29, Gallo Manor, 2052  
 Tel: (011) 798 4300 • Fax: 086 292 7318  
 e-mail: [gamsberg@erm.com](mailto:gamsberg@erm.com)  
[www.erm.com/Gamsberg-ESIA](http://www.erm.com/Gamsberg-ESIA)



30 Julie 2012

Projektnommer: 0164903

Geagte Heer/Dame

**Omgewings- en Maatskaplike Invloedbepaling vir die Voorgestelde  
Konstruksie van die Gamsberg Sinkmyn en Verwante Infrastruktuur naby  
Aggeneys, Noord-Kaap Provinsie**

*DONB Verwysingsnommer: NC/EIA/NAM/KHAI/AGG/2012-  
NCP/EIA/0000155/2012*

*DOS Verwysingsnommer: 12/9/11/L955/8*

*DMH Verwysingsnommer: NCS 30/5/1/2/2/1/518*

Black Mountain Mining (Edms) Bpk (hierna Black Mountain genoem), wat deel is van Vedanta plc, is van voorneme om die Gamsberg Sinkmyn, 'n Konsentrator-aanleg en verwante infrastruktuur in die Namakwa-distrik te vestig. Voordat daar met die projek begin kan word, moet 'n Omgewings- en Maatskaplike Invloedepaling (O&MIB) in terme van die Wet op Nasionale Omgewingsbestuur (Nr. 107 van 1998) (NEMA) uitgevoer word. Die Departement van Omgewings- en Natuurbewaring (DONB) is die leidinggewende owerheid vir die voorgestelde projek. Black Mountain het Environmental Resources Management Southern Africa (Edms) Bpk (ERM) aangestel as die onafhanklike omgewingbeoordelings-praktisyn wat vir die O&MIB-proses verantwoordelik sal wees.

**Mylpale in die O&MIB-proses**

- **Aankondiging van projek en registrasie:** Die aangehegte Agtergrond-inligtingsdokument (AID) verskaf meer inligting oor die voorgestelde projek en die O&MIB-proses. U word formeel uitgenooi om as 'n Belanghebbende en Geaffekteerde Party (B&GP) te registreer en aan die O&MIB-proses deel te neem. Die sperdatum vir registrasie deur B&GPe en vir aanvanklike kommentaar en kwessies is **29 Augustus 2012**.
- **Openbare oorsig van die Konsep Omvangbepalingsverslag:** Die Konsep Omvangbepalingsverslag sal in die tweede kwartaal van **2012** vir openbare oorsig beskikbaar wees.
- **Openbare oorsig van die Konsep O&MIB-verslag:** Die Konsep O&MIB-verslag, waarin die bevindinge van die invloedbepaling vervat is, sal na verwagting in die eerste kwartaal van **2013** vir openbare kommentaar beskikbaar gestel word.

**Kommentaar op die Agtergrond-inligtingsdokument (AID)**

U is welkom om op die AID kommentaar te lewer deur:

- Die aangehegte registrasie- en kommentaarblad te voltooi en aan ERM te stuur;
- 'n Brief te skryf of 'n bykomende skriftelike voorlegging in te dien;
- Per epos, faks of telefoon met die kantoor vir openbare deelname in verbinding te tree; en

**Environmental  
Resources  
Management**

*Johannesburg Office*  
Building 32, 1st Floor  
The Woodlands Office Park,  
Woodlands Drive  
Woodmead, 2148  
South Africa  
Tel: +27 (0) 11 798 4300  
Fax: +27 (0) 11 804 2289  
www.erm.com

*Postal Address:*  
Postnet Suite 624  
Private Bag X29  
Gallo Manor, 2052  
Johannesburg  
South Africa



*Registered Company address:*  
Environmental Resources  
Management  
Southern Africa (Pty) Ltd  
Building 32, 1st Floor,  
The Woodlands Office Park,  
Woodlands Drive  
Woodmead, 2148

*Company registration number*  
2003/001404/07

*Directors*  
Jeremy Soboil (Managing)  
Grant Bassingthwaight  
John Alexander (UK)  
John Simonson (UK)

*Offices worldwide*

A member of the  
Environmental Resources  
Management Group

- Sleutelpersone voor te stel wat na u mening belanghebbende en/of geaffekteerde partye behoort te wees.

Verdere korrespondensie sal gestuur word aan geregisteerde B&GPe. Indien u enige vrae het, meer inligting verlang, voorstelle wil maak of kwessies wil identifiseer, word u versoek om in verbinding te tree met **Paul Monare** by **Tel: (011) 798 4300, Faks 086 292 7318** of **e-pos: gamsberg@erm.com**.

Die uwe  
ERM



Nestus Bredenhann  
*Senior Konsultant*

*Ingesluit:*

- *Agtergrond-inligtingsdokument*
- *Registrasie en Kommentaarblad*

**Environmental  
Resources  
Management**

*Johannesburg Office*  
Building 32, 1st Floor  
The Woodlands Office Park,  
Woodlands Drive  
Woodmead, 2148  
South Africa  
Tel: +27 (0) 11 798 4300  
Fax: +27 (0) 11 804 2289  
www.erm.com

30 July 2012

*Project number: 0164903*

Dear Sir/Madam

**Environmental and Social Impact Assessment for Proposed Construction of the Gamsberg Zinc Mine and Associated Infrastructure near Aggeneys, Northern Cape Province**

*DENC Reference Number: NC/EIA/NAM/KHAI/AGG/2012-  
NCP/EIA/0000155/2012*

*DEA Reference Number: 12/9/11/L955/8*

*DMR Reference Number: NCS 30/5/1/2/2/1/518*

*Postal Address:*  
Postnet Suite 624  
Private Bag X29  
Gallo Manor, 2052  
Johannesburg  
South Africa

Black Mountain Mining (Pty) Ltd (herein referred to as Black Mountain), who is part of Vedanta Resource plc, proposes to establish the Gamsberg Zinc Mine, Concentrator Plant and associated infrastructure in the Namakwa District of the Northern Cape Province. An Environmental and Social Impact Assessment (ESIA) needs to be completed in terms of the National Environmental Management Act (No. 107 of 1998) (NEMA) before the proposed project may go ahead. The Department of Environment and Nature Conservation (DENC) is the lead authority for the proposed project. Black Mountain has appointed Environmental Resources Management (ERM) as the independent environmental assessment practitioner to conduct the ESIA.



**Milestones in the ESIA process**

- **Project announcement and registration:** The attached Background Information Document (BID) provides more information about the proposed project and ESIA process. You are formally invited to register as an Interested and Affected Party (I&AP) and to participate in the ESIA process. The due date for I&AP registration and initial comments and concerns is **29 August 2012**.
- **Public review of the Draft Scoping Report:** The Draft Scoping Report will be available for public review during the fourth quarter of 2012;
- **Public review of the Draft ESIA Report:** The Draft ESIA Report, containing the findings of the impact assessment, is expected to be made available for public comment during the first quarter of 2013.

*Registered Company address:*  
Environmental Resources  
Management  
Southern Africa (Pty) Ltd  
Building 32, 1st Floor,  
The Woodlands Office Park,  
Woodlands Drive  
Woodmead, 2148

**To comment on the BID**

You are welcome to comment on the BID by:

- Completing the enclosed registration and comment sheet and submitting it to ERM;
- Writing a letter or additional written submission;
- By email, fax or telephone to the public participation office; and
- Proposing key persons you feel should be included as interested and/or affected parties.

*Company registration number*  
2003/001404/07

*Directors*  
Jeremy Soboil (Managing)  
Grant Bassingthwaighte  
John Alexander (UK)  
John Simonson (UK)

*Offices worldwide*

A member of the  
Environmental Resources  
Management Group

Further correspondence will be sent to registered I&APs. Should you have any questions, need more information, or wish to raise issues of concern or suggestions, please contact **Paul Monare** at **Tel: (011) 798 4300, Fax: 086 292 7318** or **email: gamsberg@erm.com**.

Yours sincerely  
ERM



Nestus Bredenhann  
*Senior Consultant*

*Enclosed:*

- *Background Information Document*
- *Registration and Comment Sheet*

**Environmental and Social Impact Assessment (ESIA) for proposed construction of the Gamsberg Zinc Mine and Associated Infrastructure near Aggeneys, Northern Cape Province**

**Registration & Comment Sheet**

July 2012

Should you have any queries, comments or suggestions regarding the proposed project, please note them below.

*Please return your comments by 29 August 2012*

Return this comment sheet to **Paul Monare** of ERM:

**Fax** Number: 086 292 7318 or **email:** gamsberg@erm.com

**Postal Address:** Postnet Suite 624, Private Bag X29, Gallo Manor, 2052

Please formally register me as an interested and affected party (I&AP) and provide further information and notifications during the ESIA process			YES	NO
I would like to receive my notifications by:	Email	Post	Fax	

**Comments:**

**Please register the following people for this ESIA:**

**Please fill-in your contact details below for the project database:**

<b>Title and Name:</b>			
<b>Organisation:</b>			
<b>Telephone:</b>		<b>Fax:</b>	
<b>Cellphone:</b>		<b>Email:</b>	
<b>Postal Address:</b>			

Name \_\_\_\_\_ Signature \_\_\_\_\_ Date \_\_\_\_\_

**Thank you for your valuable contribution**

**Omgewings- En Maatskaplike Invloedbepaling (O&Mib) vir die Voorgestelde Konstruksie van die Gamsberg Sinkmyn en Verwante Infrastruktuur naby Aggeneys, Provinsie Noord-Kaap**

**Registrasie- en Kommentaarblad**

Julie 2012

Vul asseblief die onderstaande vorm in indien u enige vrae, kommentaar of voorstelle oor die voorgestelde projek het.

*Stuur asb. u kommentaar terug teen 29 Augustus 2012*

Stuur hierdie kommentaarblad terug aan **Paul Monare** van ERM:

**Faks:** 086 292 7318 of **e-pos:** gamsberg@erm.com

**Posadres:** Postnet Suite 624, Privaatsak X29, Gallo Manor, 2052

Registreer my asb. formeel as h belanghebbende en geaffekteerde party (B&GP) en voorsien my van verdere inligting en kennisgewings gedurende die O&MIB-proses			JA	NEE
I would like to receive my notifications by:	Email	Post	Fax	

**Kommentaar:**

**Registreer asb. die volgende persone vir hierdie O&MIB-proses:**

**Vul asb. u korrekte kontakbesonderhede vir die databasis hieronder in:**

<b>Titel en Naam:</b>			
<b>Organisasie:</b>			
<b>Telefoon:</b>		<b>Faks:</b>	
<b>Selfoon:</b>		<b>Epos:</b>	
<b>Posadres:</b>			

Naam \_\_\_\_\_ Handteekening \_\_\_\_\_ Datum \_\_\_\_\_

**Dankie vir u waardevolle bydrae**

Annex E

## IAP Stakeholder Database

	NAME	SURNAME	INSTITUTION	POSITION
Ms	Nosipho	Ngcaba	Department of Environmental Affairs	Director General
Ms	Nobubele	Ngele	Department of Water Affairs	Director General
Mr	Mpho	Tshitangoni	National Department of Environmental Affairs: Waste Directorate	
Dr.	Thibedi	Ramontja	Department of Mineral Resources	Director General
Mr	George	Mahlalela	Department of Roads and Transport	Director General
Mr	Peter	Thabethe	National Gvt Dept: Agriculture, Forestry&Fisheries	Acting Director General
Ms	Mandisa	Fatyela	Department of Public works	Director General
Mr	Tronny	Motsenga	South African National Parks (SANP)	Conservation
Ms	Lutendo	Tshifango	National Department of Environmental Affairs: Waste Directorate	
Ms	Mariagrazia	Galimberti	South African Heritage Resources Agency (SAHRA)	
Mrs	Mashudu	Ranwedzi	Department of Water Affairs	Acting Deputy Director
Mr	Shaun	Cloete	DWA - Regional	Water quality
Mr	Samuel	Dodgen	DWA - Kimberly	
Ms	Lisa	Muller	Department of Social Development	
Mr	Michael	Oberholzer	Department of Mineral Resources	Chief Director
Mr	Ntsundeni	Ravhugoni	Department of Mineral Resources	Acting Director (NC)
Mr	Ntsundeni	Ravhogoni	Department of Minerals and Energy - Kimberly	Regional Manager
Ms	Hazel	Jenkins	Office of the Premier	Premier
Mr.	Viljoen	Mothibi	Department of Agriculture and Land Reform	Head of Department
Mr.	D	Van Heerden	Department of Tourism, Environmental Affairs and Conservation	Head of Department
Dr.		Theys	Department of Health	Head of Department
Mr	S	Christians	Heritage Northern Cape	Manager Heritage Resources
Ms.	GM	Apelgren-Narkedien	Department of Cooperative Governance, Human Settlement and Traditional Affairs	Head of Department
Mr.	K	Nogwili	Department of Roads and Public Works	Head of Department
MR.	S	Jonkers	Department of Transport, Safety and Liaison	Head of Department
Ms	L	Botes	Department of Social Development	Head of Department
Mr	Brian	Fisher	Department of Environment and Nature Conservation: Air Quality	
	Deidre	Williams	DMR	
	Sibonel	Mbanjwa	Department of Environment and Nature Conservation	
Mr	Enrico	Oosthuysen	Department of Environmental & Nature Conservation	Nature Conservation Planner
	Conrad	Geldenhuys	Department of Environment and Nature	
	Elsabe	Swart	Department of Environment and Nature	

Mr	Abe	Abraham	Department of Water	
Mr	Eddie	Julius	Department of Economic Development and Tourism (DEDAT)	Manager LEP
Ms	Madelaine	Brandt	Namakwa Municipality	Municipal Manager
Mr	Ben	Vas	Namakwa District Municipality (NDM)	SLP Manager
Mr	Chris	Fortuin	Namakwa District Municipality (NDM)	LED Manager
Mr	Willem	Aurett	Namakwa District Municipality (NDM)	EHS HOD
Mr	Hertzog	Theron	Namakwa District Municipality (NDM)	EHS Deputy HOD
Mr	Boet	Baker	Khai Ma Municipality	LED
Mr	Thabo	Molete	Khai Ma Municipality	Acting Municipal Manager
Ms	A.J.	Jossop	Khai Ma Municipality	Mayor
Mr	Lukas	van Rooi	Khai Ma Municipality	Councillor/ PR
Mrs	Pasqueline	van Heerden	Khai Ma Municipality	Councillor/ Pella
Mr	Alexander	Visagie	Khai Ma Municipality	Khai Ma Municipality/Infrastructure officer
Ms	Linda	van Wyk	Khai Ma Tourism/Pella	Khai Ma Municipality
Mr	Pieter	van der Merwe	Khai Ma Municipality - Pofadder	Financial Manager
Mr	Henry	Raman	Khai Ma Municipality	Councillor
Mrs	Siena	Magerman	Khai Ma Municipality	Councillor/PR
Mr	Stefanus	April	Khai Ma Municipality - Pofadder	PR/Councillor
Mr	Alfredo	Green	Khai-Ma Municipality	Mayor's office
Mr	Stanley Terrence	Basson	Ward 3 Councillor: Aggeneys	Ward Councillor
Mr	Shaun	Cloete	Department of Water Affairs	Environmental Officer
Miss	Manase	Martin	Department of Water Affairs	Trainee
	Tumelo	Tantekane	Department of Water Affairs	Water Control Offier
Mr	Pieter	Clarke	Black Mountain	Community Liaison Manager
Ms	Grace	Rapholo	Black Mountain	Corport Affairs Manager
	Ziphokazi	Buwa	Black Mountain	Environmental Co ordinator
	Chrizzette	Neethling	Texofaber Consulting	SD Support
	Modisautsele	Khakhane	Department Environment & Nature Conservation.	Air Quality & Climate Change
Mr	Revelation	Montshirwa	Department of Environment and Nature Conservation	Environmental Officer Grade C
Mr.	Lance	Williamson	VZI	Project Manager Gamsberg
	Pottie	Potgieter	Black Mountain	Mineral Resource Manager
	Nathan	Williams	Black Mountain	GM/MD
	KA	Ajith	Black Mountain	
	Lovish	Ahuja	Black Mountain	Manager(Project)
Dr	Iras	Adedian	Pan Africa Capital Holding (Pty) Ltd	CEO
Ms	Lucille	Karsten	Department of Environmental Affairs and Nature Conservation	Environmental Officer
Ms	Monique	Fortuin	Department of Environmental Affairs and	Intern
Ms	Zurleka	Nero	Department of Environmental Affairs and Nature Conservation	SAC: Environmental Quality Management
Mr	Manie	Dixon	Agri Namakwa	Landowner
Mr	Danie	Gerber	Aroams	Landowner
Mr	Danie	Jacobs	Kamasoas	Landowner
Mr	Nols	Kennedy	Brabeos Portion 2	Landowner
Mr	Danie	Luttig	Rozynbosch	Landowner
Mr	Albertus	Roux	Bloemhoek, Hartebeest Vlei	Landowner
Mr	Deon	Maasdorp	Zuurwater	Landowner
Mr	Gert	Titus	Koeries	Landowner
Mr	Abri	Van Niekerk	Dabbiepoort - Aroams / Vogelstruis hoek	Landowner



Mr	Girrie	van den Heever	Achab	Landowner
Mr	Jasper	Mosterd	Witputs	Landowner
Mr	Gerhard	Visser		Landowner
Mr	Deon	Pieterse	Gams 60	Landowner
Mr	Tertius	Visser	Kykgat 87	Landowner
Mr	Jan	Visser	Kykgat	Landowner
Mr	Pieter-Jan	van den Heever	Koups Leegte 56 (Witsand)	Landowner
Mr	Kevin	Anderson	Aroams Farm	
Mr	Sakkie	Louw	Boesmanland Farmers Union	Chairperson
Mr	Andrew	Baxter	WWF	
Mr	Abe	Koopman	SANBI Northern Cape	
Mr	Edward	Cloete	WYKS Komitee	Financial and economic Dev
Ms	Anthea	Stephens	Namakwa Biodiversity Advisory Forum of the South African National Biodiversity Institute (SANBI)	
Mr	Lubabalo	Ntsholo	SANBI	
Ms	Suzanne	Erasmus	Wildlife and Environment Society of South Africa (WESSA)	
Mr	Alex	Sick	Succulent Society of South Africa (SSSA)	
Mr	Nicholas	Sigamu	Conservational International (CI)	Project Developer
Ms	Harriet	Davis-Mostert	Endangered Wildlife Trust (EWT)	
Ms	Zaiton	Rabaney	Botanical Society of South Africa (BSSA)	Director
Mr	Andy	Pienaar	Namakwaland Action Group/Nago	
Mr	Peter	Carrick	Namakwa Restoration Institute (NRI)	
Mr	Ronnie	Newman	Conservation South Africa (CSA)	
Ms	Amanda	Bourne	Conservation South Africa (CSA)	
Ms	Farayi	Madziwa	Conservation South Africa (CSA)	Policy and Markets Associates
Mr	Noel	Oettle	Environmental Monitoring Group	
Mr	Stephen	Law	Environmental Monitoring Group	Director
Mr	Nathan	Williams	Pelladrift Water Board	Chairperson
Ms	Tania	Anderson	WESSA Northern Cape	
Ms	Carolyn	Ah Sene Verdoom	Birdlife South Africa	Policy and Advocacy Manager
Ms	Beryl	Wilson	McGregor Museum	
Prof	Andrew	Young	University of Liverpool	Director of Research
Mr	Abubakar	Fredricks	National Union of Mineworkers	Regional Representative
Ms	Melisa	Fourie	Centre for Environmental Rights	
Mr	Herschelle	Milford	Surplus People Projects	
Mr	Danie	Jakob	Agri Namakwa	
Dr	Terry	Smale	The Mesembs Study Group	
Ms	Anna	Afrikaner	Pella Orange River Resort	Shareholder
Mr	E.J.	Kearns	National Ports Authority	Ports Manager
Mr	Eugene	Koeglenberg	Steinweld Supplies	
Mr	Lyndon	Metcalf	National Ports Authority	SHE Manager
Mr	Theo	Smith	TL Engineering	Owner
Ms	Johannita	van Rooyen	Enviroserv Waste Management (Pty) Ltd	Key Accounts Consultant
Mr	Pieter	Klaase	Jowells Transport	
Ms	Glenda		Klein Pella Guest House	
Ms	Helene		Trans Oranje Drukkers	

Mr	Wimpie		KLK Pofadder	
Ms	Vanessa	De Klerk	Botes-Kennedy	
Mr	Leon	Waterboer	Bushmanland Green Heritage	Owner / Manager
Mr	Jaco	Goussard	JCG Water treatment	
Mr	Aviv	Garten	Orlight	
Mrs	Nirvana	Pillay	Southern Mapping	Business Executive
Ms	Petronela/Akata	Paris/Groenewald	Pofadder library	
Sr		Van der Colff	Pofadder clinic	
Mr	Xavier	Diergaard	Aggeneys Primary School	Principal
Mr	Marcillinus	Gail	Pella Community	Local Management
Mr	Romeo	Ukena	Aggeneys High School	Principal
Mr	Ismail	Kolberg	SAPD Forum	Chairperson
Mr	Pieter	Clarke	Community Engagement Forum	Stakeholder Relations Manager
Mr	Malcolm	van der Mescht	Futures Forum	
Ms	Marie	Felicity	Roman Catholic Church - Pella Projects	
Mr	Nico	Jano	Khai Ma Business Forum	Chairperson
Mr	D.J.	Julie	Khai Ma Business Forum	Member
Mr	Gerrie	van der Heever	Pofadder Landbou Vereniging	Chairperson
Mr	Alfred	Waterboer		Pensioner
Mr	Christoffel	Tienus		Disability Allowance
Mr	Abraham	Witbooi		
Mr	Johny C.	Simboya	Transformasie Komitee	
Mr	A.A.	van Wyk	Khai Ma Tourism	
Mr	G.P.	Magerman		
Mr	Kasper	Spence	Elneps Konstruksie	
Ms	Janice	Links		EDW
Mr	Ronald	Stuurman	Desert Road Inn	Businessman
Mr	Johan	van Dyk	Aggeneys	Community representative
Ms	Chrizette	Neethling		
Ms	Grace	Rapholo	Black Mountain Mining	
Mr	Josef	Groenwald	Black Mountain Mining	Aggeneys Town Engineer
Ms	Eva	Black	Black Mountain Mining	Corporate Communications Manager
Mr	Pieter	Venter	Black Mountain Mining	Corporate Affairs Manager
Mr	Pieter	Clark	Black Mountain Mining	
Mr	Lance	Williamson	Project Manager, Infrastructure and Utilities	Project Manager, Infrastructure and Utilities
	Andrea	Van Gensen	Eskom	
Mrs	Prudence	Msebenzi	NC District Police	District Manager
Dr	Adrian	Tiplady	SKA South Africa Project Office	Scientist
Ms	Margret	Ovengo	South Africa Social Security Agency (SASSA)	Supervisor
Mr	Mogole	Mphahlele	SANRAL	SANRAL Environmental coordinator
	Konst G1	Carstens	SAPS	Social Crime Official
	Lanza	Kolberg	COCHSTA	CDW
Ms	B.	Masabeni	SAPS	Admin
Ms	E N.	Rainers	SAPS	Accounting Clerk
Ms	A	Engelbrecht		
Me	Karen	Williamson	Housewife	
Me	C	Freeman	Housewife	
Me	A	Ramon	Housewife	
	Cathy	Basson	Community worker - housewife	
	Estelle	Gertze	Aggadappies	
	Sarah	Fortuin	Housewife	
	Francina	Ndunge	Housewife	
	M	Josop	Rural Development	

	D	Waterboer	Housewife	
	S	Cloete	Housewife	
	S	Van Zyl	Caregiver Hope 4 life	
	V	Cloete	Housewife	
	J	Visagie	Housewife	
	L	Bezuidenhout		
	S	Fredericks		
	S	Cloete		
	Peter	Clarke	BMM	
	Malcolm T	Links	BMM HR	
	Maritz	Myburgh	BVI Consulting Engineers Springbok	Professional Engineer
	JC	Zandberg	BMM	Town Engineer
	Peter	Venter	BMM	Env Manager
	Sister	Van der Colf	Pofadder Clinic	Health worker - nurse
	Isak	Hendrikse	Pofadder	farmer
	Claritta	Kordon	Pofadder	farmer
	J	Van Rooi	Pofadder	farmer
	Dina	Cloete	Pofadder	farmer
	Sara	Julie	Pofadder	farmer
	Freddie	Kortom	Pofadder Clinic	farmer
	Emalio	Genis	Pofadder	farmer
	Trudy	Cloete	Pofadder	farmer
	Dina	Hendrikse	Pofadder	farmer
	Julie	Dirk	Pofadder	farmer
	E J	Vries	Khai - Ma	Senior Admin Officer
	Ronald	Stuurman	Desert Rpad Inn	Director
	W/O DJ	Van Vuuren	SAPS	Station Commander
	Capt. PS	Mayo	SAPS	Station Commander
	Lt.Col. NJ	Beukes	SAPS	Cluster Commander
	Capt KJ	Khoboko	SAPS	Detective Commander
	W/O JJ	Kruger	SAPS	Vispoltas Pella
	Capt.	Löck	SAPS	Pella Station Commander
	Janises	Links	CDW - Pella	
	Amanda	Magerman	Pella Clinic	
	Stefanus	April	Khai-Ma-Mun	
	Cecilia	Raman	Khai-Ma-Mun	
	Esther	Nell	Groentetuin	
	Ina	Basson	Kamasfontein Gastehuis	
	Rosina	Secondt	Mother Company	
	Ann	August	Mother Company	
	Maria	Watt		
	Katrina R	Witbooi	Eindtydpinkster Kerk	
	Antoinette	April		
	Janey	Christiaan	Oog - Esserstraat	
	Elna	Smit		
	Polien	Jannetjies		
	Jinetta	Jaar		
	Roma	Simboya		Brick making
	Tiena	Windfield		
	C	Raman	Community	
	A	Platjie	SA Post Office	RPA
	PL	Basson	Community	
	P	De Bruin	Community	
	B	Visagie	Community	
	Cemelia	Van den Heever		
	Judy Ann	Cali		

	Anita Lourencia	Jaar		
	Alta	Rabe		
	JO	Links	COGHSTA	CDW
	Ivan	August		
	Stefanus	April	Khai-Ma-Mun	Raadslid
	Allison	Jaar		
	Emerentia	Basson		
	Stephan	Raman		
	Ian Nico	April		
	Andrew Izalo	Stuurman		
	Sonia	Watt		
	Dalma	Watt		
	E	Julius	Dept Econ, Development	District Manager
	H	Raman	Khai-Ma-Mun	Councillor
	A	Lategan	COGHSTA	CDW
	S	Megerman	Kha-Ma	Councillor
	CJC	Africa	Private	Private
Mr	Alfredo	Green	Khai-Ma-Mun	SPO
Mr	Lukas	van Rooi	Khai Ma Municipality	Councillor/ PR
	TM	Bezuidenhout	Pofadder Internet Café	Owner
	J	Bezuidenhout	Khai-Ma-Mun	Secretary: MM
	Anna	Booyesen	GPF	Voorsitter
	Trudy	Cloete		
	Siena	Cloete		
	S Hannon	Adams		
	Eunice	Titus		
	Elizabeth	Waterboer		
	Susanna	Du Plessis		
	Maureen	Julie		
	Wendy	Julie		
	Vertuzel	Visagie		
	Francis	Basson		
	Malinda	Brandt		
	Marinus	Van Zyl		
	Falcon	Feris		
	Luzaan	Waterboer		
	Gerhardus	Joseph		
	Lowayne	Joseph		
	Beulah	Beukes		
	Ghuraan	Van Wyk		
	Jeremy	Prins		
	Werner	Ross		
	Brener	Witbooi		
	Norman	Visagie		
	Juluis	Dewee		
	Fiona	Fortuin		
	Anne	Januarie		
	Elmarie	Engelsman		
	Ashraf	Fanteni	SASSA	Consultant
	Marlyn	Joseph	SASSA	Consultant
	Loranne	Lategan	CPS	Enrolment Officer
	NC	Molalana	SASSA	Grant Administrator
	Carmen	Rossouw	SASSA	Grant Administrator
	Mrs C	Van Rooyen	Boesmanland High School	Principal
	Mrs R	Groenewald	Hope for Life	Caregiver
	Miss Virginia	Basson	Hope for Life	Caregiver
	Mrs Sara	Kongatie	Hope for Life	Caregiver
	Mrs Bernadine	Stoffels	Hope for Life	Caregiver

Annex F

## Minutes of Meetings during Project Initiation Phase

**Memo**

Telephone  
Facsimile  
Email

**To** Nestus Bredenhann, Belinda Ridley and Paul Monare

**Copied to** Mel Pillay and Tania Swanepoel

**From** Mariam January

**Ref/Project number** 0164903

**Subject** Initial Stakeholder Consultation Report

**Date** 26 June 2012

---



## **INTRODUCTION**

This Initial Stakeholder Consultation report provides an outline of the information gathered from stakeholders as part of initial consultation for the Gamsberg Zinc Mine ESIA near Aggeneys in the Northern Cape Province contains the following sections:

- Objectives;
- Towns visited; and
- Stakeholders consulted; and
- Comments, concerns and suggestions raised by stakeholders.

## **OBJECTIVES**

The objective of the initial consultation with key stakeholders was to gain an understanding of concerns and suggestions related to the proposed project and the surrounding environment. In addition, the initial consultation also provided an opportunity to identify more stakeholders who will be consulted throughout the ESIA process.

## **TOWNS VISITED**

The following towns were visited as part of the initial consultation with key stakeholders:

- Pofadder;
  - Meeting with Pofadder Landbou Vereniging on 21 June 2012;
  - Meeting with the Namakwa District and Khai-Ma Local Municipalities on 21 June 2012;
- Aggeneys;
- Pella;

## Memo

- Meeting with the Khai-Ma Local Municipality, Community Leaders and Community Based Organisations on 20 June 2012; and
- Springbok;
  - Meeting with the South African National Botanical Institute (also representing the Namaqualand Biodiversity Advisory Forum (NAMBAF) on 20 June 2012.

### STAKEHOLDERS CONSULTED

The various stakeholder groups that were consulted as part of the initial consultation include:

- Namakwa District Municipality (NDM);
- Khai-Ma Local Municipality;
- Pofadder Landbou Vereniging; and
- South African National Botanical Institute (SANBI), also representing the Namaqualand Biodiversity Advisory Forum (NAMBAF).

**Table 1: Stakeholders Consulted During the Initial Consultation**

Stakeholder Name	Position	Organisation
Ben Vas	SLP Manager	Namakwa District Municipality (NDM)
Chris Fortuin	LED Manager	Namakwa District Municipality (NDM)
Boet Baker	Municipal Manager	Khai-Ma Municipality
Thabo Molefe	Acting Municipal Manager	Khai-Ma Municipality
A.J. Jossop	Mayor	Khai-Ma Municipality
Stefanus April	Councillor	Khai-Ma Municipality
Lukas van Rooi	Councillor	Khai-Ma Municipality
Pasqueline van Heerden	Councillor	Khai-Ma Municipality
Sienna Magerman	Councillor	Khai-Ma Municipality
Henry Raman	Councillor	Khai-Ma Municipality
Stanley Basson	Councillor	Khai-Ma Municipality
Alexander Visagie	Khai-Ma Municipality /Infrastructure officer	Khai-Ma Municipality
Pieter van der Merwe	Financial Manager	Khai-Ma Municipality - Pofadder
Eddie Julius	Manager	Department of Economic Development
Linda van Wyk	Khai Ma Municipality	Khai-Ma Tourism/Pella
Nico Jano	Khai-Ma Business Forum	Chairperson
D.J. Julie	Khai-Ma Business Forum	Member
Marcellimus Gall	Pelson	Representative
Edward Cloete	Financial and Economic Development	WYKS Komitee
Lisa Muller	Representative	Department of Social Development
Stanley Terrence	Ward Councillor	Ward 3 Councillor: Aggeneys
Girrie van den Heever	Chairperson	Pofadder Landbou Vereniging
AB Koopman	Chairperson	SANBI Northern Cape / NAMBAF
Boitshekwane Kgantsi	Intern	SANBI
Alfred Waterboer	Pella community member	Pella
Christoffel Tienus	Pella community member	Pella

## Memo

Stakeholder Name	Position	Organisation
Abraham Witbooi	Pella community member	Pella
G.P. Magerman	Pella community member	Pella
Janice Links	Pella community member	Pella
Johny C. Simboya	Pella community member	Transformasie Komitee
A.A. van Wyk	Pella community member	Khai-Ma Tourism
Kasper Spence	Pella community member	Elneps Konstruksie

## COMMENTS, CONCERNS AND SUGGESTIONS RAISED

The key comments, concerns and suggestions raised by stakeholders as part of the initial consultation are recorded in the table below.

**Table 2: Comments, Concerns and Suggestions Raised**

Comments, Concerns & Suggestions	Date	Stakeholder Meeting
The youth are generally included in projects but they do not stay involved because usually get disinterested.	20 June 2012	Khai-Ma Local Municipality and Pella Community Leaders
The youth are not interested in farming. Drug abuse such as Tik and alcohol abuse is common amongst the youth.	20 June 2012	Khai-Ma Local Municipality and Pella Community Leaders
The Gamsberg project will only be able to accommodate and benefit certain people. It is unlikely that everybody will benefit.	20 June 2012	Khai-Ma Local Municipality and Pella Community Leaders
People were looking at Gamsberg as an opportunity to relieve unemployment in the District during the 2000 EIA process.	20 June 2012	SANBI
A key concern is that although BMM has 23 000 ha that is under observation; the area is regarded as predominantly used for sheep farming and is not pristine.	20 June 2012	SANBI
Gamsberg is approximately 800 ha but it has rare and unique plants. The inselberg has critical biodiversity.	20 June 2012	SANBI
There is a proposal to establish a nursery for the rare succulents, although it would be important to prove that the nursery can be sustainable. Especially because the soil conditions will likely change during the mining process and climate change will also be a factor to consider.	20 June 2012	SANBI
The influx of job seekers could lead to an increase of crime in the area and resulting in further unemployment. It is important that this influx is managed as far as possible.	21 June 2012	Pofadder Farmer Association
The quality and availability of groundwater is a concern. There have been informal reports that the groundwater table has already lowered.	21 June 2012	Pofadder Farmer Association
Security is a concern for farmers. The municipality and the local police will not have the capacity to deal with the potential crime in the area. Farmers will be at ease if the mine ensures that good security measures are taken during operations of the Gamsberg mine.	21 June 2012	Pofadder Farmer Association



## Memo

Comments, Concerns & Suggestions	Date	Stakeholder Meeting
The road to Loop 10 should be closed for public access. The only people that use that road are farmers and the mine. The security threat will be minimised if access can be controlled.	21 June 2012	Pofadder Farmer Association
People cannot be stopped when searching for work, but they should also not be encouraged to stay in areas where the municipality will not be able to absorb the influx of more underprivileged people searching for work.	21 June 2012	Pofadder Farmer Association
There are currently no structured communication between the mine and the farmers.	21 June 2012	Pofadder Farmer Association
Noise levels around the Gamsberg area will increase due to mining and operational activities.	21 June 2012	Pofadder Farmer Association
What will the impact on groundwater be both in terms of quality and availability on surrounding farmers?	21 June 2012	Khai-Ma Local and Namakwa District Municipalities
The mine development will primarily be for export purposes. The mine should also look at other options such as economic beneficiation. In addition, the primary means of export is via road transport or by rail through connecting at Loop 10. The mine should look into other transport options such as using the airports at Port Nolloth and Boegoebaai. The roads in the area do not have the capacity to cope with the proposed traffic.	21 June 2012	Khai-Ma Local and Namakwa District Municipalities
In the previous EIA conducted, the 'green lobby' was used to oppose the project. However, the need for employment is pervasive. Is there a plan to develop a community lobby?	21 June 2012	Khai-Ma Local and Namakwa District Municipalities
Will the mine be an open cast or underground? Open cast mining will cause considerable damage to the environment as can be seen with the examples of Transhex and De Beers.	21 June 2012	Khai-Ma Local and Namakwa District Municipalities
The announcement made for the project in 1999 caused high levels of expectations, resulting in people waiting outside the gates of Black Mountain Mining (BMM) looking for employment. What can the community expect in terms of employment for this project?	21 June 2012	Khai-Ma Local and Namakwa District Municipalities
The mine should plan for a smelter in the area but the electricity capacity in the area is a challenge. How is the mine planning to address the water and electricity requirements for the project?	21 June 2012	Khai-Ma Local and Namakwa District Municipalities
The mine should consider using fewer trucks with a greater capacity to transport the ore, but it is best to investigate the railway option to Loop 10.	21 June 2012	Khai-Ma Local and Namakwa District Municipalities

**Memo**

<b>Comments, Concerns &amp; Suggestions</b>	<b>Date</b>	<b>Stakeholder Meeting</b>
Emphasis should be put on the rehabilitation of the fauna and flora. It would be important to let people know what the rehabilitation costs would be. This would allow people to weigh up the costs of rehabilitation and economic benefit.	21 June 2012	Khai-Ma Local and Namakwa District Municipalities
It is important to look at economic beneficiation and potential assistance to SMME (small medium and micro enterprises). This needs to be part of the ESIA.	21 June 2012	Khai-Ma Local and Namakwa District Municipalities
Information from the Demarcations Board suggests that 75% of people in the area are indigenous. The mine should contribute to infrastructure and socio-economic upliftment. The policy should translate to effective service delivery.	21 June 2012	Khai-Ma Local and Namakwa District Municipalities
The current understanding is that BMM will only consider people that have passed matric as a minimum requirement for employment. This will however discriminate against people that do not have matric and who are in need of employment. The mine should also look at the areas of Witbank, Pella and Onseepkans for employment as these areas form part of the Namakwa District Municipality. It is important to have a wide spectrum when skills are developed.	21 June 2012	Khai-Ma Local and Namakwa District Municipalities
As part of the employment initiative, BMM should consider the challenges associated with readiness and help people prepare for employment opportunities which would entail skill development and a skills audit. The mine should report on the skills required, any training opportunities as well as the number of available jobs expected.	21 June 2012	Khai-Ma Local and Namakwa District Municipalities
The district Municipality is in the process of establishing a training centre in Okiep (by April 2013). The mine would need to start negotiations with potential students early.	21 June 2012	Khai-Ma Local and Namakwa District Municipalities
The mine will probably require skills that are not available in the Namakwa District Municipality (NDM), but there should be a clear understanding of what skills are available in the NDM.	21 June 2012	Khai-Ma Local and Namakwa District Municipalities
It would be valuable for BMM to liaise with Kumba in Kathu to attract workers from the area that have moved to Kathu in search of work at the mines.	21 June 2012	Khai-Ma Local and Namakwa District Municipalities
The principle of economic beneficiation is vital for the future of Pofadder. If one looks at the example of Saldanha, where a harbour was built 35 years ago and more recently a smelter (Saldanha Steel Mill) has resulted in Saldanha becoming the economic hub of the West Coast. To build a smelter in Pofadder means investing in the future of the town. There are only three smelters in South Africa, namely, Germiston, Saldanha and New Castle and the country would benefit from a fourth smelter.	21 June 2012	Khai-Ma Local and Namakwa District Municipalities

## Memo

Comments, Concerns & Suggestions	Date	Stakeholder Meeting
The District Municipality is in the process of developing a database of the skills level in the area (NDM) however they need assistance with coordination and funding.	21 June 2012	Khai-Ma Local and Namakwa District Municipalities
It is important that the proponent need to look beyond that lifespan of the project since the surrounding towns would need to continue after mine closure.	21 June 2012	Khai-Ma Local and Namakwa District Municipalities
The ESIA for Gamsberg should take the closure plan for the mine applicable to Aggeneys into consideration.	21 June 2012	Khai-Ma Local and Namakwa District Municipalities
It is important that the District Municipality and Department of Water Affairs are consulted throughout the ESIA process.	21 June 2012	Khai-Ma Local and Namakwa District Municipalities
The Inter-Government Relations (IGR) structure is a platform where the Mayor is represented and she will report on the development of the Gamsberg project as this will be important for the development of the area.	21 June 2012	Khai-Ma Local and Namakwa District Municipalities
There are several challenges related to the development of tourism, but it is considered to be an important area for development. Some of the key challenges include the safety risks associated with establishing a hiking trail and keeping tourists interested to return.	21 June 2012	Khai-Ma Local and Namakwa District Municipalities
Gamsberg is part of the 'Bushmen' inselberg areas which have been declared as a biodiversity hotspot. There should be a rehabilitation and tourism plan put in place.	21 June 2012	Khai-Ma Local and Namakwa District Municipalities
The Northern Cape Province is still in the process of developing their tourism plan and as such the NDM has not commenced with the development of a tourism plan for the Namakwa District.	21 June 2012	Khai-Ma Local and Namakwa District Municipalities
There is a lot of potential for tourism in the area. The 4x4 route is very popular with people from Gauteng and the Western Cape and the film industry is becoming more active in the area.	21 June 2012	Khai-Ma Local and Namakwa District Municipalities
People are sceptical of whether the project will be realised because of history and people's experience with the previous EIA completed. The challenge is to get people interested and to participate in the process so that they can make their voices heard in support of the project.	21 June 2012	Khai-Ma Local and Namakwa District Municipalities
Pofadder is very isolated and this is one of the deterrents to tourists to come here. The municipality should consider tarring the road between Klipbrant/Klipfontein to Van Rhynsdorp and the road from Pofadder to Onseepkans. This will shorten the time it takes to access the area and so attract more tourists.	21 June 2012	Khai-Ma Local and Namakwa District Municipalities
The people have negative feelings towards BMM because only certain communities will benefit from the proposed development.	21 June 2012	Khai-Ma Local and Namakwa District Municipalities

**Memo**

<b>Comments, Concerns &amp; Suggestions</b>	<b>Date</b>	<b>Stakeholder Meeting</b>
The negative perception regarding the Gamsberg project is that 10 years ago people prepared for start of the project and went above their means through starting businesses which would benefit from the increased number of people in the area, but the project never materialised, leaving people in debt.	21 June 2012	Khai-Ma Local and Namakwa District Municipalities
Only 20% of BMM's procurement is from SMMEs. 80% of the jobs need to be local and 80% of procurement needs to go to SMMEs in order to alleviate the negative perception caused the mine to becoming operational around 2000.	21 June 2012	Khai-Ma Local and Namakwa District Municipalities
BMM should consider integrated housing, so as to spread the benefits from the mine to other towns.	21 June 2012	Khai-Ma Local and Namakwa District Municipalities
There are three other solar projects underway in the Khai Ma Municipality area which will lead to further changes in the municipality.	21 June 2012	Khai-Ma Local and Namakwa District Municipalities

**Environmental and Social Impact Assessment for Proposed Construction  
of the Gamsberg Zinc Mine and Associated Infrastructure near  
Aggeney, Northern Cape Province**  
*Pre-Scoping Focus Group Meetings*

Photos	Meeting Date	Description
	15 August 2012	Pofadder: Meeting with Pofadder Landbou Vereniging
	30 July 2012	Springbok: Meeting with Environmental NGOs (SANBI, NAGO and Conservation SA)
	30 July 2012	Pofadder: Meeting with Khai-Ma Local Municipality

*Subject/Ref* Pofadder Farmers' Union Focus Group

*Venue* Pofadder Farmers' Union Hall

*Date of Meeting* 15 August 2012

*Present* Paul Monare (ERM), Nestus Bredenhann (ERM), Pieter Clarke (Black Mountain), Girrie van den Heever (Chairman), Abrie van Niekerk (Landowner)

Building 32  
1<sup>st</sup> Floor  
The Woodlands Office Park  
Woodlands Drive  
Woodmead, 2148  
T: +27 11 798 4300  
F: +27 11 804 2289  
<http://www.erm.com>



---

## 1. Introduction

## ACTION

Nestus Bredenhann opened the meeting by introducing himself and the project team. Everyone was given the opportunity to introduce themselves.

## 2. Proceedings

- The meeting was chaired by Nestus Bredenhann (NB). NB handed out the Background Information Document to all attendees and explained the purpose of the meeting.
- NB continued and facilitated a discussion regarding the proposed project, related activities and the associated regulatory and public participation processes.
- During the meeting comments, issues of concern and suggestions were raised and discussed by the attendees.
- Paul Monare (PM) wrote down comments, ensured that the attendance register was completed and took photographs.
- Where possible Pieter Clark (PC) provided answers to questions raised by attendees and provided more detail on the various project components.

## 3. Key Comments Raised

The comments included below represents a summary of the discussion that took place during the meeting. All comments, issues of concern and suggestions are included in further detail in the Comment and Response Report (CRR), which is appended in the Draft Scoping Report.

- **Air Quality:** quality of air will be negatively affected because of dust which will be caused by the proposed project.
- **Stakeholder Engagement:** structuring of stakeholder meetings in such a way as to provide stakeholders the opportunity to provide comments, raise issues of concern and make suggestions relating to the proposed project.

## Meeting minutes

- **Security:** the safety of farmers and their livestock will be in jeopardy because of an influx of people into the area and associated uncontrolled activities.
- **Groundwater:** possibilities of groundwater availability declining and potential groundwater pollution because of the proposed project.
- **Government Involvement:** the local government is being encouraged to provide a more support and become more involved with the public and various sectors of society.
- **ESIA Process:** the impacts associated with the proposed project should be made clear (in writing) to interested and affected parties during the ESIA process.

#### 4. Closure

Comments, issues of concern and suggestions were noted and where possible, provided with responses from the project team. . NB assured attendees that comments raised will be incorporated into the CRR and the needed responses will be provided. The CRR will be included in the Draft Scoping Report and made available to stakeholders for review. NB also provided an overview of the process going forward and confirmed that public meetings will be held.

*Subject/Ref* Khai-Ma LM Focus Group Meeting

*Venue* Khai-Ma Local Municipality Offices

*Date of Meeting* 16 August 2012

*Present* Paul Monare (ERM), Nestus Bredenhann (ERM), Pieter Clarke (BMM), Lukas van Rooy (Cllr), Stefanus April (Cllr), Nico Jano (Business Forum), Siena Magerman (Cllr), Henry Raman (Cllr) & Alfredo Green (Mayor's Office).

Building 32  
1<sup>st</sup> Floor  
The Woodlands Office Park  
Woodlands Drive  
Woodmead, 2148  
T: +27 11 798 4300  
F: +27 11 804 2289  
<http://www.erm.com>



---

## 1. Introductions

## ACTION

The Local Municipality official (Alfredo Green) opened the meeting formally with a prayer, stated intention of the meeting and thanked everyone for making the time to attend. Nestus Bredenhann thanked everyone for the opportunity and introduced the project team. Everyone was given the opportunity to introduce themselves.

## 2. Proceedings

- The meeting was chaired by Nestus Bredenhann (NB). NB handed out the Background Information Document to all attendees and explained the purpose of the meeting.
- NB continued and facilitated a discussion regarding the proposed project, related activities and the associated regulatory and public participation processes.
- During the meeting comments, issues of concern and suggestions were raised and discussed by the attendees.
- Paul Monare (PM) wrote down comments, ensured that the attendance register was completed and took photographs.
- Where possible Pieter Clark (PC) provided answers to questions raised by attendees and provided more detail on the various project components.

## 3. Key Comments Raised

The comments included below represents a summary of the discussion that took place during the meeting. All comments, issues of concern and suggestions are included in further detail in the Comment and Response Report (CRR), which is appended in the Draft Scoping Report.

- **Economic Development:** local businesses should be well informed and kept informed about the opportunities that will be available through the proposed development in the area.
- **Economic Development:** local economic development should contribute to sustainable development in surrounding communities.



- **Government Involvement:** the local municipality is prepared to play a role in local economic and institutional capacity development.
- **Transportation:** the construction of a railway line could be beneficial to the mining project, particularly a railway line that will link directly to Port Nolloth.
- **Electricity:** renewable energy should be considered for the supply of electricity for the proposed development.
- **Public Participation:** the dates of the public participation meetings should be disclosed as soon as possible to allow the community members time to prepare for their participation and attendance.

#### 4. Closure

Comments, issues of concern and suggestions were noted and where possible, provided with responses from the project team. NB assured attendees that comments raised will be incorporated into the CRR and the needed responses will be provided. The CRR will be included in the Draft Scoping Report and made available to stakeholders for review. NB also provided an overview of the process going forward and highlighted the fact that public meetings will be held.

*Subject/Ref* NGO Focus Group Meeting

*Venue* Conservation South Africa: Springbok (NC)

*Date of Meeting* 16 August 2012

*Present* Paul Monare, Nestus Bredenhann, Pieter Clarke (Black Mountain), Maki Kgantsi (CSA), Amanda Bourne (CSA), Abe Koopman (SANBI), Ronnie Newman (CSA), Andy Pienaar (NAGO)

Building 32  
1<sup>st</sup> Floor  
The Woodlands Office Park  
Woodlands Drive  
Woodmead, 2148  
T: +27 11 798 4300  
F: +27 11 804 2289  
<http://www.erm.com>



## 1. Introductions

## ACTION

Nestus Bredenhann opened the meeting by introducing himself and the project team. Everyone was given the opportunity to introduce themselves.

## 2. Proceedings

- The meeting was chaired by Nestus Bredenhann (NB). NB handed out the Background Information Document to all attendees and explained the purpose of the meeting.
- NB continued and facilitated a discussion regarding the proposed project, related activities and the associated regulatory and public participation processes.
- During the meeting comments, issues of concern and suggestions were raised and discussed by the attendees.
- Paul Monare (PM) wrote down comments, ensured that the attendance register was completed and took photographs.
- Where possible Pieter Clark (PC) provided answers to questions raised by attendees and provided more detail on the various project components.

## 3. Key Comments Raised

- **Air Quality:** Data on the impact associated with dust should be made available to stakeholders.
- **ESIA Process:** Data on the identified environmental impacts should be made available to stakeholders.
- **ESIA Process:** the importance of having the Namakwa District Municipality partake in and to determine what role they can play in the ESIA process.
- **Housing:** new housing developments should include the highly

impoverished areas and be considered within existing towns.

- **Electricity:** renewable energy should be considered as an alternative source of electricity to the proposed project.
- **Environmental Impacts:** the proposed project poses a threat to the sensitive biodiversity and natural landscape of the Gamsberg area.
- **Transportation:** The N14 and N17 should not be considered as options for the transportation of zinc concentrate to the Saldanha Bay Port.
- **Project Specific:** there is a lot of general environmental information available, but this information isn't necessarily accessible to stakeholders. Information relating to this ESIA should be made available to I&APs.

#### 4. Closure

Comments, issues of concern and suggestions were noted and where possible, provided with responses from the project team. NB assured attendees that comments raised will be incorporated into the CRR and the needed responses will be provided. The CRR will be included in the Draft Scoping Report and made available to stakeholders for review. NB also provided an overview of the process going forward and highlighted the fact that public meetings will be held.