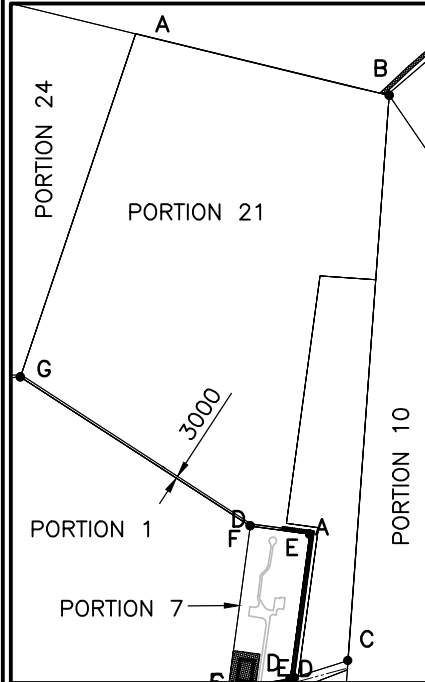
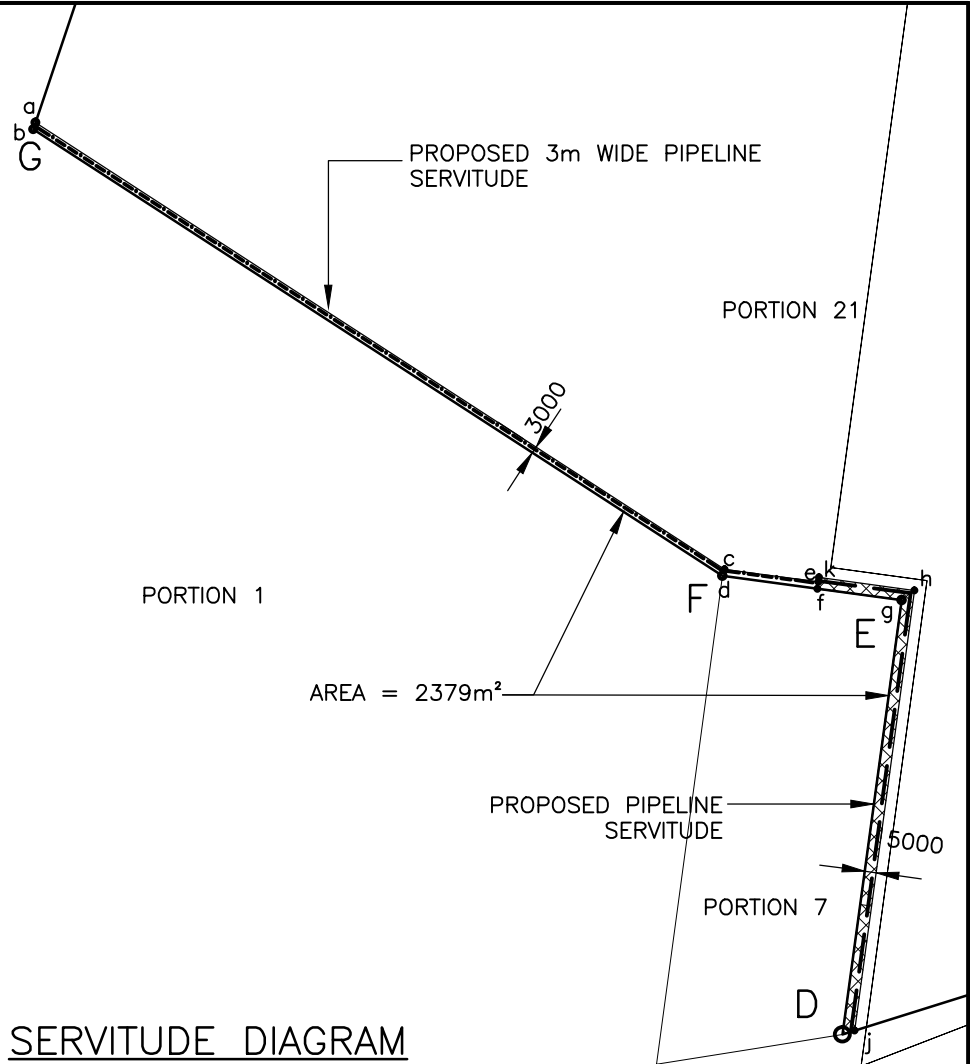


SIDES METERS	ANGLES OF DIRECTION	CO-ORDINATES (System WGS 84)	
		Y	X
		0	+37 00 000.0
AB	345.00 283 44 17	A	-33382.730 63168.755
BC	749.70 4 9 53	B	-33717.830 63250.655
CD	80.00 72 28 20	C	-33663.330 63998.355
DE	193.40 187 44 20	D	-33587.030 64022.455
EF	79.70 97 40 10	E	-33613.030 63830.855
FG	361.90 122 58 40	F	-33534.030 63820.155
GA	479.20 198 31 50	G	-33230.430 63623.155



CO-ORDINATES (System WGS 84)		
POINT	Y	X
a	-33231.415	3763620.218
b	-33230.430	3763623.155
c	-33535.099	3763817.272
d	-33534.030	3763820.155
e	-33573.858	3763822.522
f	-33573.550	3763825.500
g	-33613.030	3763830.855
h	-33618.657	3763826.572
i	-33587.030	3764022.455
j	-33592.334	3764020.739
k	-33576.647	3763820.882

THE LINE A B C D E F G REPRESENTS 24.0770 HECTARES OF LAND BEING PORTION 21 (A PORTION OF SEAVIEW WEST) OF THE FARM SEA VIEW



SERVITUDE DIAGRAM
NOT TO SCALE

DESIGNED	RDB	APPROVED	SCALE
DRAWN	TS	PROJECT MANAGER	1 : 10000
CHECKED	GC	DIRECTOR	DATE
			03/12/08

NELSON MANDELA BAY MUNICIPALITY
SEAVIEW BULK WATER

PORTION 21
S.G. No 2312/70

COPYRIGHT AND USE OF THIS DRAWING IS RESERVED BY BOSCH STEMELE

DRAWING NUMBER 8003/011/011E A4 REVISION 0



Consulting Engineers • Project Managers

BOSCH STEMELE (PTY) LTD.
P.O. BOX 27158, GREENACRES, P.E. 6057.
BLOCK 2, GROUND FLOOR, GREENACRES OFFICE PARK
2nd AVENUE, NEWTON PARK, PORT ELIZABETH, 6045, RSA
TELEPHONE: (041) 363 0598 TELEFAX: (041) 363 7646
E-mail: bsp@boschstemele.co.za
www.boschstemele.co.za

