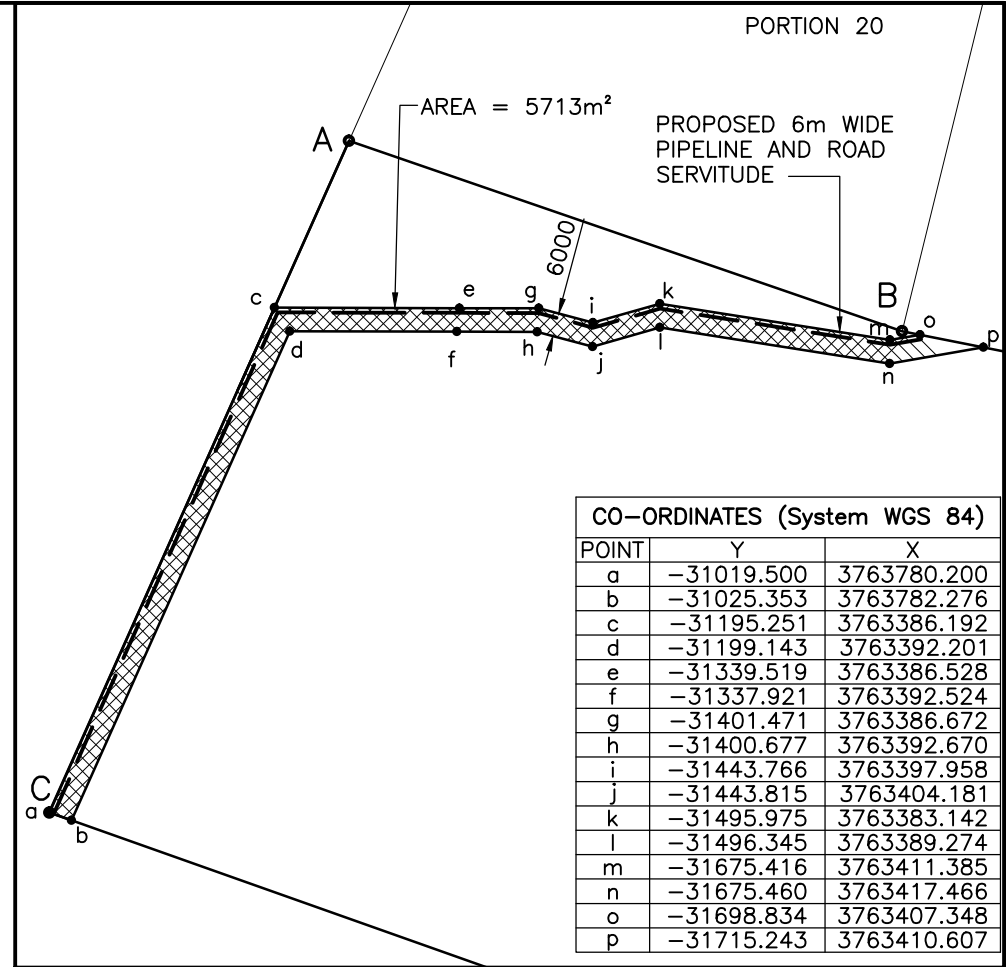
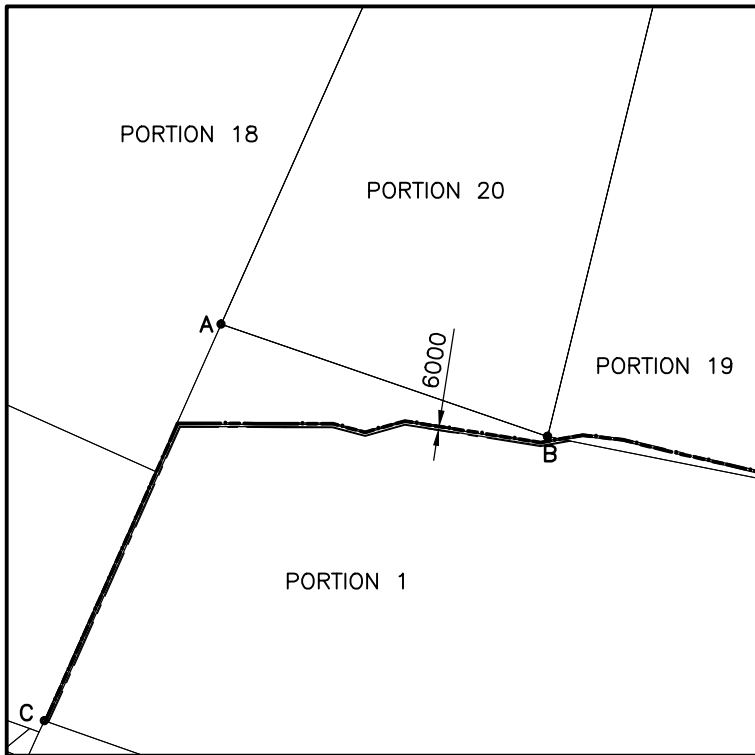


SIDES METERS	ANGLES OF DIRECTION	CO-ORDINATES (System WGS 84)			
		Y	X		
		0	+37 00 000.0		
AB	456.600	109 0 20	A	-31253.330	63255.855
AC	574.100	204 2 40	B	-31685.030	63404.555
			C	-31019.500	63780.200



CO-ORDINATES (System WGS 84)		
POINT	Y	X
a	-31019.500	3763780.200
b	-31025.353	3763782.276
c	-31195.251	3763386.192
d	-31199.143	3763392.201
e	-31339.519	3763386.528
f	-31337.921	3763392.524
g	-31401.471	3763386.672
h	-31400.677	3763392.670
i	-31443.766	3763397.958
j	-31443.815	3763404.181
k	-31495.975	3763383.142
l	-31496.345	3763389.274
m	-31675.416	3763411.385
n	-31675.460	3763417.466
o	-31698.834	3763407.348
p	-31715.243	3763410.607

SERVITUDE DIAGRAM
NOT TO SCALE

DESIGNED	RDB	APPROVED PROJECT MANAGER DIRECTOR	SCALE
DRAWN	TS		1 : 10000
CHECKED	GC		DATE
			03/12/08

**NELSON MANDELA BAY
MUNICIPALITY
SEAVIEW BULK WATER**

PORTION 1
S.G. No B1076/1927



Consulting Engineers • Project Managers

BOSCH STEMELE (PTY) LTD.
P.O. BOX 27158, GREENACRES, P.E. 6057.
BLOCK 2, GROUND FLOOR, GREENACRES OFFICE PARK
2nd AVENUE, NEWTON PARK, PORT ELIZABETH, 6045, RSA
TELEPHONE: (041) 363 0598 TELEFAX: (041) 363 7646
E-mail: bspe@boschstemele.co.za
www.boschstemele.co.za



COPYRIGHT AND USE OF THIS DRAWING IS RESERVED BY BOSCH STEMELE

DRAWING NUMBER

8003/011/011K

A4

REVISION

0