

**NOTIFICATION OF SAMPLING OPERATIONS IN SOUTH AFRICAN MARINE
PROSPECTING RIGHTS AREAS HELD BY DE BEERS CONSOLIDATED MINES (PTY) LTD**

Notification date: 24 October 2016

The purpose of this notice is to inform interested and affected parties of sampling activities planned to take place in De Beers Consolidated Mines (Pty) Ltd.'s marine prospecting rights areas MPT 399/2009 and MPT 93/2011 in Sea Concessions 5C and 6C respectively. Notification is primarily intended for the marine industry, in particular the marine minerals prospecting industry, offshore oil exploration industry, fishing industry, marine shipping, marine safety authority (SAMSA) and the South African Hydrographic Office.

De Beers Marine (Pty) Ltd, the Appointed Operator by De Beers Consolidated Mines (Pty) Ltd.'s for their South African Sea Concession prospecting rights, intends conducting approximately 10 days of sampling operations (using the mv SS *Nujoma*), in the South African Sea Concessions 5c and 6c between 17-30 November 2016. The position of the two target areas are provided in the attached map (Figure 1) and coordinates in the table below. Activities will be limited to inshore of the 150m isobath and offshore of the 100m isobath.

Target Area A in 5c	<i>Latitude</i>	<i>Longitude</i>
north west coordinate	29° 41' 00" S	16° 41' 00" E
north east coordinate	29° 41' 00" S	16° 55' 00" E
south east coordinate	29° 50' 00" S	16° 55' 00" E
south west coordinate	29° 50' 00" S	16° 41' 00" E

Target Area B in 6c	<i>Latitude</i>	<i>Longitude</i>
north coordinate	29° 55' 00" S	16° 50' 00" E
east coordinate	29° 55' 00" S	16° 57' 00" E
south coordinate	30° 00' 00" S	16° 57' 00" E
west coordinate	30° 00' 00" S	16° 50' 00" E

De Beers Marine is committed to minimising the impact of its activities on the environment, an undertaking which is implemented through the company's ISO14001-certified Environmental Management System. Environmental aspects and impacts associated with prospecting activities have been assessed and mitigation measures are contained within the approved Environmental Management Plans for the prospecting rights. While the impacts of prospecting activities on other marine users are regarded as low, ongoing engagement with stakeholders forms an important part of this management programme.

We thank you for your courtesy in this regard. If you have any questions or would like to discuss some matters further, please do not hesitate to contact us.

Michele Kruse (Geosciences Manager)
Tel: +27-21-658-3210
michele.kruse@debeersgroup.com

or Lesley Roos (Environmental Manager)
Tel: +27-21-658-3194
lesley.roos@debeersgroup.com

DE BEERS MARINE

GOLF PARK 2 RAAPENBERG ROAD PINELANDS CAPE TOWN
PO BOX 87 CAPE TOWN 8000 SOUTH AFRICA

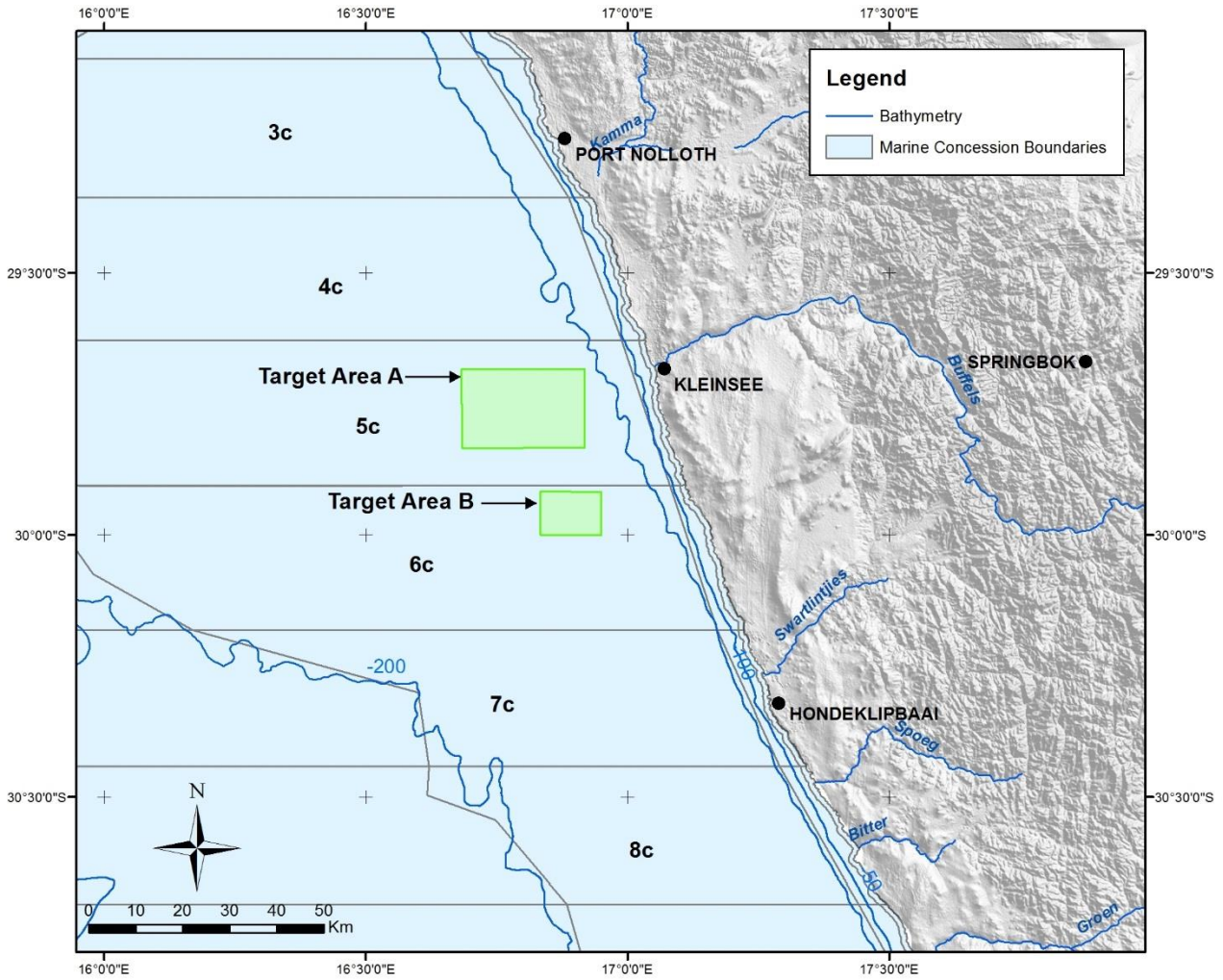


Figure 1: Map showing the location of the two Sampling Target Areas

DE BEERS MARINE

GOLF PARK 2 RAAPENBERG ROAD PINELANDS CAPE TOWN
PO BOX 87 CAPE TOWN 8000 SOUTH AFRICA