

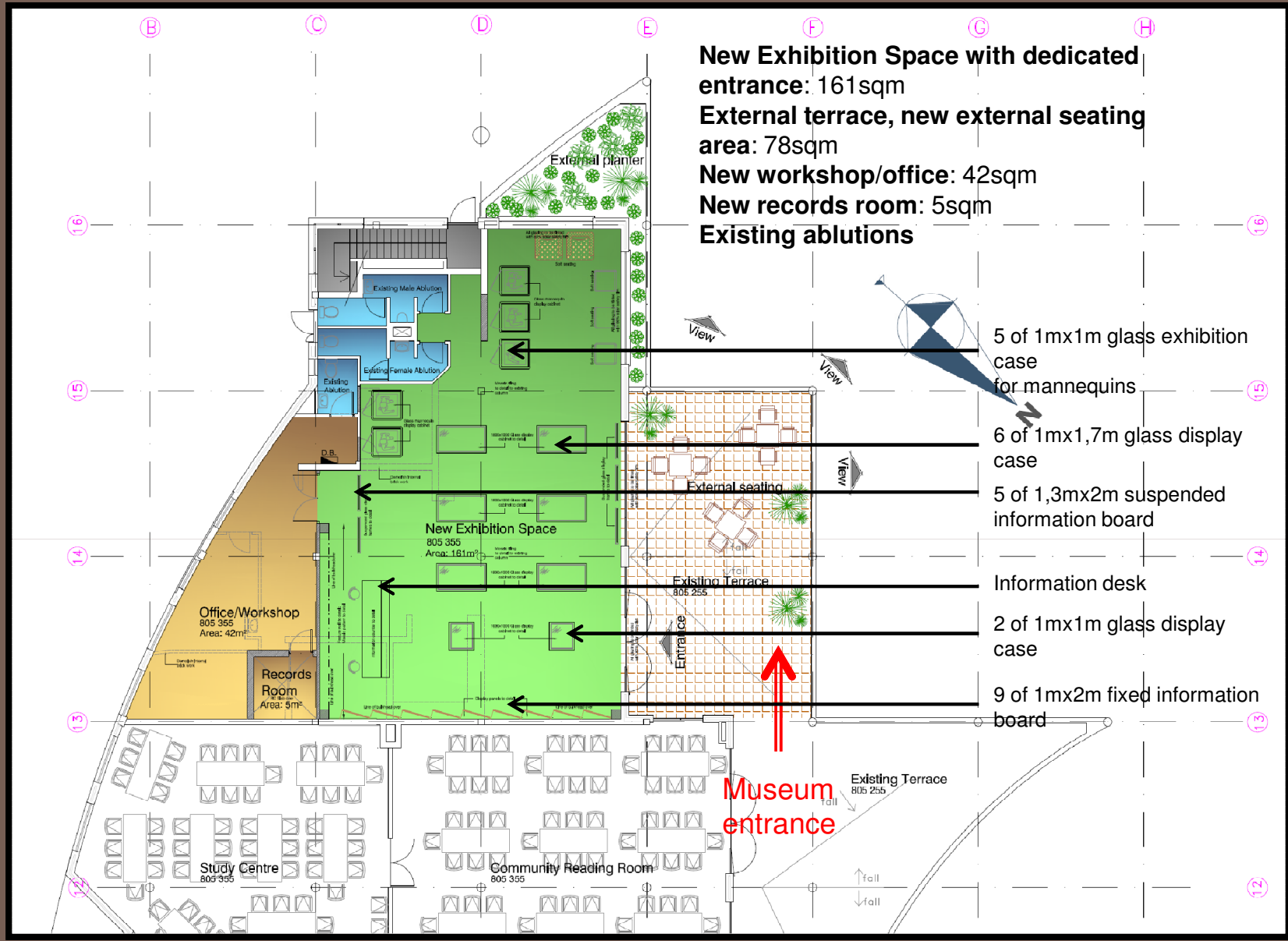
Joan Broster Beadwork & Clothing Collection

Sasol Library

Mthatha

MDA ARCHITECTS

Floor Plan Phase I



New Exhibition Space with dedicated entrance: 161sqm
External terrace, new external seating area: 78sqm
New workshop/office: 42sqm
New records room: 5sqm
Existing ablutions

- 5 of 1mx1m glass exhibition case for mannequins
- 6 of 1mx1,7m glass display case
- 5 of 1,3mx2m suspended information board
- Information desk
- 2 of 1mx1m glass display case
- 9 of 1mx2m fixed information board

Design Rationale

With reference to the conservation assessment document compiled by June Hosford in 2009 the following deductions can be made:

❑ The collection of items to be displayed numbers over 3000 pieces, including beaded ornaments, clothing and objects. The results and findings of the Hosford Conservation Assessment document clearly state that the current display environment is not adequate for the collection.

❑ The collection requires a dedicated space that offers a comfortable and meaningful viewing platform for the items on display.

❑ It is with this in mind that the proposed space within the existing canteen is only a temporary solution to display only part of the collection.

❑ **WSU have allocated the existing canteen at the Sasol Library Building to be converted to exhibit the collection. This space will accommodate the following:**

New Exhibition Space with dedicated entrance: 161sqm

External terrace, new external seating area: 78sqm

New workshop/office: 42sqm

New records room: 5sqm

Existing male and female ablutions

❑ **The total display area of 161sqm allows for the following display options (as shown in the proposed plan):**

5 of 1mx1m full height glass exhibition cases

6 of 1mx1,7m glass display cases

2 of 1mx1m glass display cases

5 of 1,3mx2m hanging information display boards

9 of 1mx2m fixed information display boards

❑ Analysis of the Hosford document and the fact that the collection comprises of over 3000 pieces very quickly makes it apparent that the exhibition space realised from the refurbishment of the canteen (161 sqm) is insufficient. Even allowing for the workshop area to be incorporated with the exhibition space, which would realise an area of approximately 200 sqm, this would still be inadequate.

❑ In the short term the refurbishment of the canteen can be viewed as a temporary solution to display only part of the collection.

❑ We propose a phased development programme which has phase 1, the redevelopment of the existing canteen which extends into a phased development programme over 4 phases to safe guard and consolidate the display of the national Heritage artefacts at the Sasol Library in Mthatha.

Design Rationale cont...

□ The design tabled in this presentation proposes the following phasing to accommodate all the necessary requirements to exhibit the entire collection:

Phase 1: Refurbishment of the canteen and relocation of part of the collection into the existing canteen at the Sasol Library Building

Phase 2: New 700sqm study hall adjacent to existing library, with a possible further 700sqm

Phase 3: Extension of exhibition space into old study hall, new total area for exhibition: 480sqm

Phase 4: The exhibition could be further extended by 300sqm if required

□ The following finishes and renovations are proposed:

Interior Finishes

- New floor finish, with mosaic accent tiling to pick up on some of the bead work
- New display cabinets and wall panels
- New wall and column finishes with accent walls to define spaces and create interest
- Colours and accents will focus on the traditional red ochres and shades as communicated in the bead collections and the ways of the traditions of the Xesibe tribe.

Mechanical and safety requirements

- New up grade lighting with low heat / UV emission to suite the new museum function of the space.
- New independent climatic control system separate from the library system
- UV and sun control from exterior to interior, suggest a new external louvre system to control suns rays at different times of the day, with UV resistant film on all glazing

□ The following slides explain the phasing process diagrammatically

Site Plan Phase II



Existing lake

PH I: Proposed Museum/exhibition approx: 161sqm

Future extension to study hall approx: 700sqm

Existing parking retained

PH II: New proposed 24 hour study hall approx: 700sqm

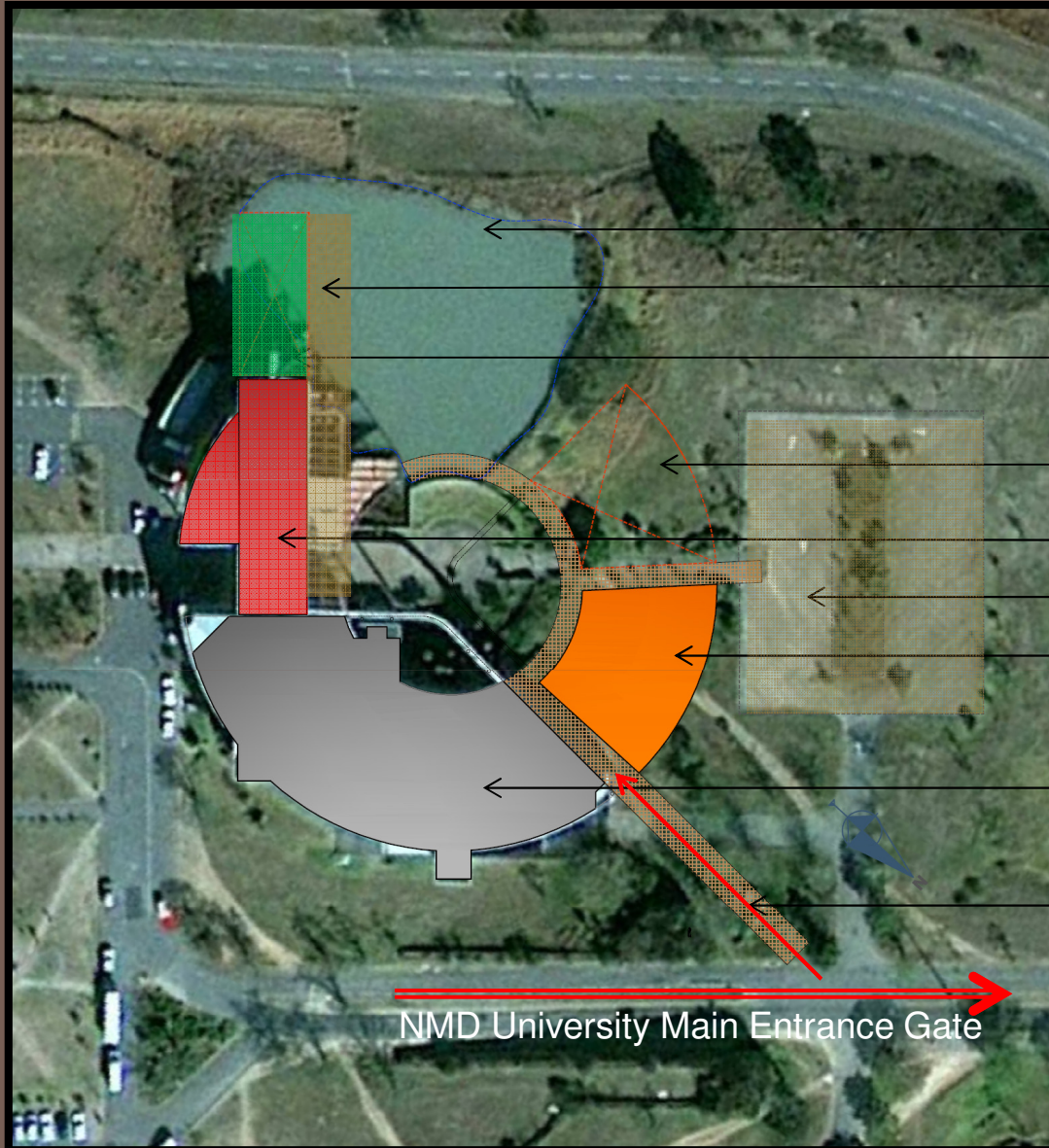
Existing NMD Library
foot print area: 2084sqm

New walkway link to main road

NMD University Main Entrance Gate

Joan Broster Beadwork & Clothing Collection, Sasol Library

Site Plan Phase II-IV



Existing lake

Existing walkway extended to new building

PH IV: Future Extension to Museum
approx: 300sqm

Future extension to study hall approx: 700sqm

PH III: Proposed extended museum space: 412sqm

Existing parking retained

PH II: New proposed 24 hour study hall approx:
700sqm

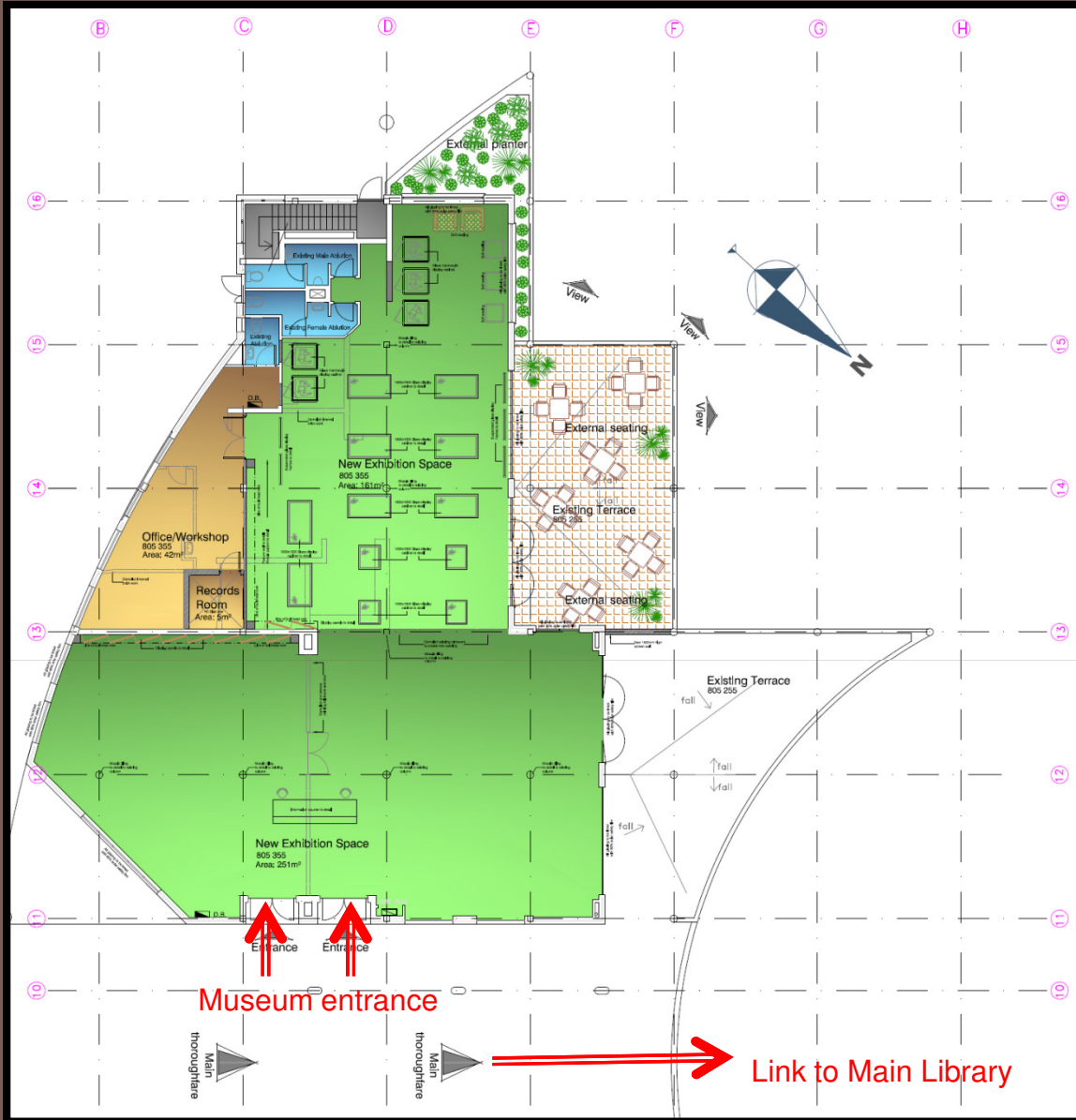
Existing NMD Library
foot print area: 2084sqm

New walkway link to main road

NMD University Main Entrance Gate

Joan Broster Beadwork & Clothing Collection, Sasol Library

Site Plan Phase III



Total New Exhibition Space with dedicated entrance: 480sqm
External terrace, seating area: 160sqm
Workshop/office: 42sqm
Records room: 5sqm
Existing ablutions to remain

Joan Broster Beadwork & Clothing Collection, Sasol Library