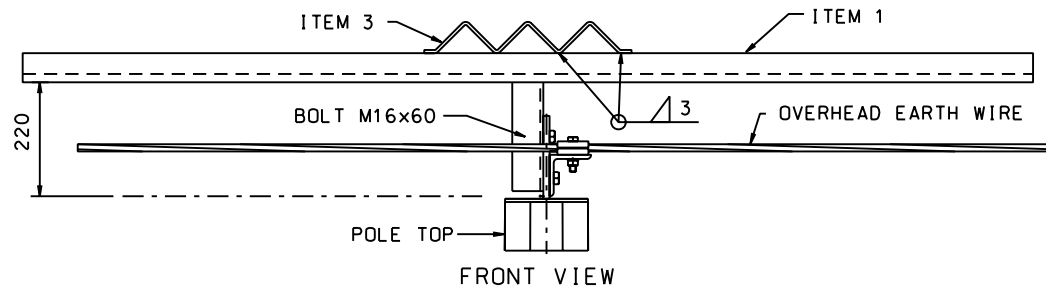
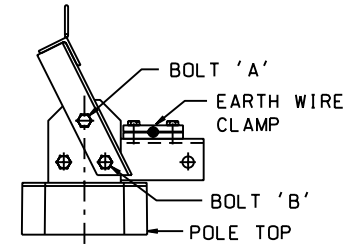


ITEM 3
SCALE 1:5

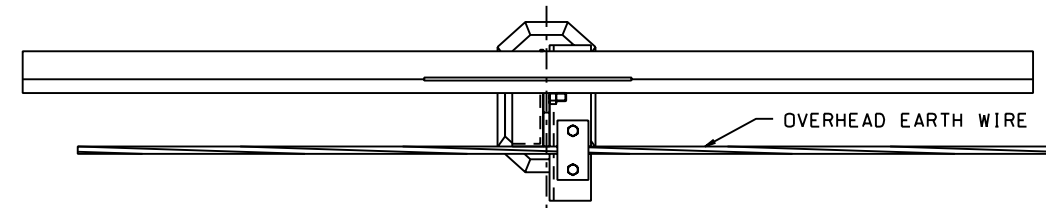


FRONT VIEW



SIDE VIEW

BOLT 'A':- M16 BOLT RECOVERED FROM EARTH WIRE BRACKET
 BOLT 'B':- NEW M16 x 60 BOLT EXISTING M16 x 50 BOLT TO BE USED FOR TOP HOLE



TOP VIEW
FITTING DETAILS
SCALE 1:10

- NOTES:
1. USE GRADE 300W STEEL TO SANS 1431.
 2. ALL WELDING TO CONFORM TO SANS 10044.
 3. ASSEMBLY TO BE GALVANIZED TO SANS 121.
 4. BIRD PERCHES REQUIRED FOR ALL INTERMEDIATE STRUCTURES UNLESS OTHERWISE REQUESTED

SCHEDULE

ITEM	DESCRIPTION	QTY
1	60x60x6x1950 ANGLE	1
2	60x60x6x300 ANGLE	1
3	6mm ROUND BAR 530 LONG	1
4	M16x60 BOLT, NUT&WASHER	1

TOTAL MASS: 12.4kg

3	SABS CHANGED TO SANS AND RETICULATION REMOVED FROM TITLE BLOCK	P.A.T.	S. MASHABA	02.03.'09		
2	ITEM 2 WAS 300MM LONG, NOW 290MM. AND TITLE BLOCK CHANGED	JLR/PAV	WC/PAV	AB	MARCH 2003	
REV	REVISION DESCRIPTION	BY	CHKD	AUTH	DATE	PROJECT NO.

Eskom
Distribution

AUTH: A BEKKER
 DATE: MARCH 2003
 CHKD: WC
 DATE: MAY 1998
 DRAWN: JLR
 DATE: MAY 1998

DISTRIBUTION TECHNOLOGY
 SUB-TRANSMISSION LINES
 ASSEMBLY AND INFORMATION DRAWINGS
 PERCHING BRACKET
 MONOPOLE STRUCTURES

D-DT-7347

SET	SHEET	REVISION
1	1	3