

**Bokamoso** stands on the basis of fairness. This include respect within our multicultural team and equal opportunities in terms of gender, nationality and race.

We have a wide variety of projects to tend to, from complicated reports to landscape installation. This wide range of projects enables us to combine a variety of professionals and skilled employees in our team.

Bokamoso further aids in the development of proficiency within the working environment. Each project, whether in need of skilled or unskilled tasks has its own variety of facets to bring to the table.

We are currently in the process of receiving our BEE scorecard. We support transformation in all areas of our company dynamics.



**03 Human Resources**

**031 Employment Equity**

## **Lizelle Gregory (100% interest)**

Lizelle Gregory obtained a degree in Landscape Architecture from the University of Pretoria in 1992 and passed her board exam in 1995.

Her professional practice number is PrLArch 97078.

Ms. Gregory has been a member of both the Institute for Landscape Architecture in South Africa (ILASA) and South African Council for the Landscape Architecture Profession (SACLAP), since 1995.

Although the existing Environmental Legislation doesn't yet stipulate the academic requirements of an Environmental Assessment Practitioner (EAP), it is recommended that the Environmental Consultant be registered at the International Association of Impact Assessments (IAIA). Ms. Gregory has been registered as a member of IAIA in 2007.

Ms. Gregory attended and passed an International Environmental Auditing course in 2008. She is a registered member of the International Environmental Management and Assessment Council (IEMA).

She has lectured at the Tshwane University of Technology (TUT) and the University of Pretoria (UP). The lecturing included fields of Landscape Architecture and Environmental Management.

Ms. Gregory has more than 25 years experience in the compilation of Environmental Evaluation Reports:

Environmental Management Plans (EMP);

Strategic Environmental Assessments;

All stages of Environmental input ;

EIA under ECA and the new and amended NEMA regulations and various other Environmental reports and documents.

Ms. Gregory has compiled and submitted more than 600 Impact Assessments within the last 5-6 years. Furthermore, Ms. L. Gregory is also familiar with all the GDARD/Provincial Environmental policies and guidelines. She assisted and supplied GAUTRANS/former PWV Consortium with Environmental input and reports regarding road network plans, road determinations, preliminary and detailed designs for the past 12 years.



**03 Human Resources**

**032 Members**

# Qualifications And Experience In The Field Of Environmental Planning And Management (Lizelle Gregory (Member Bokamoso)):

## Qualifications:

- Qualified as **Landscape Architect** at UP 1991;
- Qualified as **Professional Landscape Architect in 1997**;
- A Registered Member at The **South African Council for the Landscape Architect Profession (SACLAP)** with Practise Number: **PrLArch97078**;
- A Registered Member at the **International Association for Impact Assessment Practitioners (IAIA)**;
- Qualified as an **Environmental Auditor in July 2008** and also became a Member of the International Environmental Management Association (IEMAS) in 2008.

## Working Experience:

- Worked part time at Eco-Consult – 1988-1990;
- Worked part time at **Plan Associates as Landscape Architect in training** – 1990-1991;
- Worked as Landscape Architect at **Environmental Design Partnership (EDP)** from 1992 - 1994
- Practised under **Lizelle Gregory Landscape Architects** from 1994 until 1999;
- Lectured** at Part-Time at **UP** (1999) – Landscape Architecture and **TUT** (1998- 1999)- Environmental Planning and Plant Material Studies;
- Worked as **part time Landscape Architect and Environmental Consultant at Plan Associates** and **managed their environmental division for more than 10 years** – 1993 – 2008 (assisted the **PWV Consortium** with various road planning matters which amongst others included environmental Scans, EIA's, Scoping reports etc.)
- Renamed business as **Bokamoso in 2000** and is the only member of Bokamoso Landscape Architects and Environmental Consultants CC;
- More than 25 years experience in the compilation of Environmental Reports**, which amongst others included the compilation of various **DFA Regulation 31 Scoping Reports**, EIA's for EIA applications in terms of the applicable environmental legislation, Environmental Management Plans, Inputs for Spatial Development Frameworks, DP's, EMF's etc. Also included EIA Application on and adjacent to mining land and slimes dams (i.e. Brahm Fisherville, Doornkop)

# Qualifications And Experience In The Field Of Landscape Architecture (Lizelle Gregory (Member Bokamoso)):

## Landscape Architecture:

-Compiled landscape and rehabilitation plans for more than 22 years.

### The most significant landscaping projects are as follows:

-Designed the Gardens of the Witbank Technicon (a branch of TUT). Also supervised the implementation of the campus gardens (2004);

-Lizelle Gregory was the Landscape Architect responsible for the paving and landscape design at the UNISA Sunnyside Campus and received a Corobrick Golden Award for the paving design at the campus (1998-2004);

-Bokamoso assisted with the design and implementation of a park for the City of Johannesburg in Tembisa (2010);

-The design and implementation of the landscape gardens (indigenous garden) at the new Coca-Cola Valpre Plant (2012-2013);

-Responsible for the rehabilitation and landscaping of Juksei River area at the Norwood Shopping Mall (Johannesburg) (2012-2013);

-Designed and implemented a garden of more than 3,5ha in Randburg (Mc Arthurpark). Bokamoso also seeded the lawn for the project (more than 2,5 ha of lawn successfully seeded) (1999);

-Bokamoso designed and implemented more than 800 townhouse complex gardens and submitted more than 500 Landscape Development Plans to CTMM for approval (1995 – 2013);

-Assisted with Landscape Designs and the Masterplan at Eco-Park (M&T Developments) (2005-2011);

-Bokamoso designed and implemented an indigenous garden at an office park adjacent to the Bronberg. In this garden it was also necessary to establish a special garden for the Juliana Golden Mole. During a recent site visit it was established that the moles are thriving in this garden. Special sandy soils had to be imported and special indigenous plants had to be established in the natural section of the garden.

-Lizelle Gregory also owns her own landscape contracting business. **For the past 20 years she trained more than 40 PDI jobless people (sourced from a church in Mamelodi)** to become landscape contracting workers. All the workers are (on a continuous basis) placed out to work at nurseries and other associated industries;

-Over the past 20 years the Bokamoso team compiled more than 800 landscape development plans and also implemented most of the gardens. Bokamoso also designed and implemented the irrigation for the gardens (in cases where irrigation was required). Lizelle regarded it as important to also obtain practical experience in the field of landscape implementation.

# Consulting

## Anè Agenbacht

**Introduction to Sustainable Environmental Management—An overview of Principles, Tools, & Issues (Potch 2006)**  
**Leadership Training School (Lewende Woord 2010)**  
**BA Environmental Management (UNISA 2011)**  
**PGCE Education (Unisa 2013) - CUM LAUDE**  
Project Manager  
More than 10 years experience in the compilation of various environmental reports

## Mary-Lee Van Zyl

**MSc Plant Science (UP)**  
**BSc (Hons) Plant Science (UP)**  
**BSc Ecology (UP)**  
More than 5 years working experience in the Environmental field  
Specialises in ECO works, Basic Assessments, EIA's, and Flora Reports  
Compilation of various Environmental Reports

## Dashentha Moodley

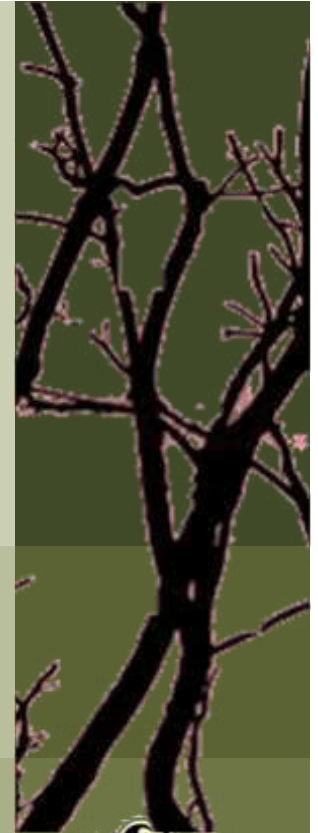
**BA (Hons) Degree in Environmental Management (UNISA) - CUM LAUDE**  
**Bachelor of Social Science in Geography & Environmental Management (UKZN)**  
More than 6 years experience in WUL Applications & Integrated Environmental Management within water resource management.  
Senior Environmental Practitioner & Water Use Licence Consultant  
Specialises in Water Use License & Compilation of various Env. Reports

## Adèle Drake

**BA Geography & History (UP)**  
**NQF Level 7 Air Quality Management (UJ)**  
More than 15 years experience in the field of Environmental Management within Mining Industry (surface and underground), Forestry Industry, Renewable Energy Industry (WEF), and Environmental Consulting. Also ISO 14000, ISO 9000, and Safety Management Auditor.

## Ronell Kuppen

**BSc (Hons) in Geography (UNISA)**  
**BA Environmental and Development (UKZN)**  
More than 5 years experience in Environmental Consulting  
Specializing in WUL Applications, Waste License Applications, EIAs, Basic Assessments, Public Participations, Borrow Pits



**03 Human Resources**

**033 Personnel**

**Ben Bhukwana**

**BSc Landscape Architecture (UP)**

More than 8 years experience in the field of Landscape Architecture (Design, Construction, Implementation, and Management).  
Specialises in landscape design, ECO, rehabilitation plans and compilation various environmental reports and compilation of tender documents

**Juanita de Beer**

**Diploma Events Management and Marketing (Damelin)**

Specializes in Public relations and Public Participation Processes (4 years experience)  
Specialises in compiling various environmental reports

**Alfred Thomas**

**CIW Foundation & Internet Marketing (IT Academy)**

12 years experience in GIS and IT in general.  
GIS Operator and Multimedia Specialist.

**Lizette Delport**

**MSc. In Aquatic Health (UJ)**

**BSc. Hons. Environmental Management**

Environmental Assessment Practitioner and Wetland Specialist  
Registered with the South African Wetland Society (SAWS)

**A.E. van Wyk**

**BSc Environmental Sciences (Zoology and Geography)**

Environmental Control Officer  
Junior avifauna specialist

**Juan Gregory**

**LLB (UP)**

**BA Law (UP)**

Junior Environmental Impact Practitioner  
Environmental Control Officer



**03 Human Resources**

**034 Person-**

**Elsa Viviers**

**Interior Decorating (Centurion College)**

( Accounting/ Receptionist ) and Secretary to Lizelle Gregory

**Loura du Toit**

**N. Dip. Professional Teacher (Heidelberg Teachers Training College )**

Librarian and PA to the Project Manager

**Merriam Mogalaki**

Administration Assistant with in-house training in bookkeeping

## **Landscape Contracting**

**Elias Maloka**

Assisting with Public Participations and Office Admin

Site manager overseeing landscape installations.

Irrigation design and implementation.

Landscape maintenance

More than 18 years experience in landscape construction works.

The contracting section comprises of six permanently employed black male workers. In many cases the team consists of up to 12 workers, depending on the quantity of work.



**03 Human Resources**

**035 Personnel**

# In-house Specialists

**Corné Niemandt**

**MSc Plant Science (UP 2015) – Cum Laude**

**BSc (Hons) Zoology (UP 2012)**

**BSc Ecology (UP 2011)**

Specialises in ecological surveys and report writing

Compilation of fauna and flora specialist reports

GIS: Generating maps



**03 Human Resources**

**036 Personnel**





## **01 Environmental Management Services**

- Basic Assessment Reports
- EIA & Scoping Reports
- Environmental Management Plans
- Environmental Scans
- Strategic Environmental Assessments
- EMP for Mines
- Environmental Input and Evaluation of Spatial Development Frameworks
- State of Environmental Reports
- Compilation of Environmental Legislation and Policy Documents
- Environmental Auditing and Monitoring
- Environmental Control Officer (ECO)
- Visual Impact assessments
- Specialist Assistance with Environmental Legislation Issues and Appeals
- Development Process Management
- Water Use License applications to DWA
- Waste License Application



**04 Services**

**041 Consulting Services**

## 02 Landscape Architecture

- Master Planning
- Sketch Plans
- Planting Plans
- Working Drawings
- Furniture Design
- Detail Design
- Landscape Development Frameworks
- Landscape Development Plans (LDP)
- Contract and Tender Documentation
- Landscape Rehabilitation Works

## 03 Landscape Contracting

Implementation of Plans for:

- Office Parks
- Commercial/ Retail / Recreational Development
- Residential Complexes
- Private Residential Gardens
- Implementation of irrigation systems



*Bokamoso* 

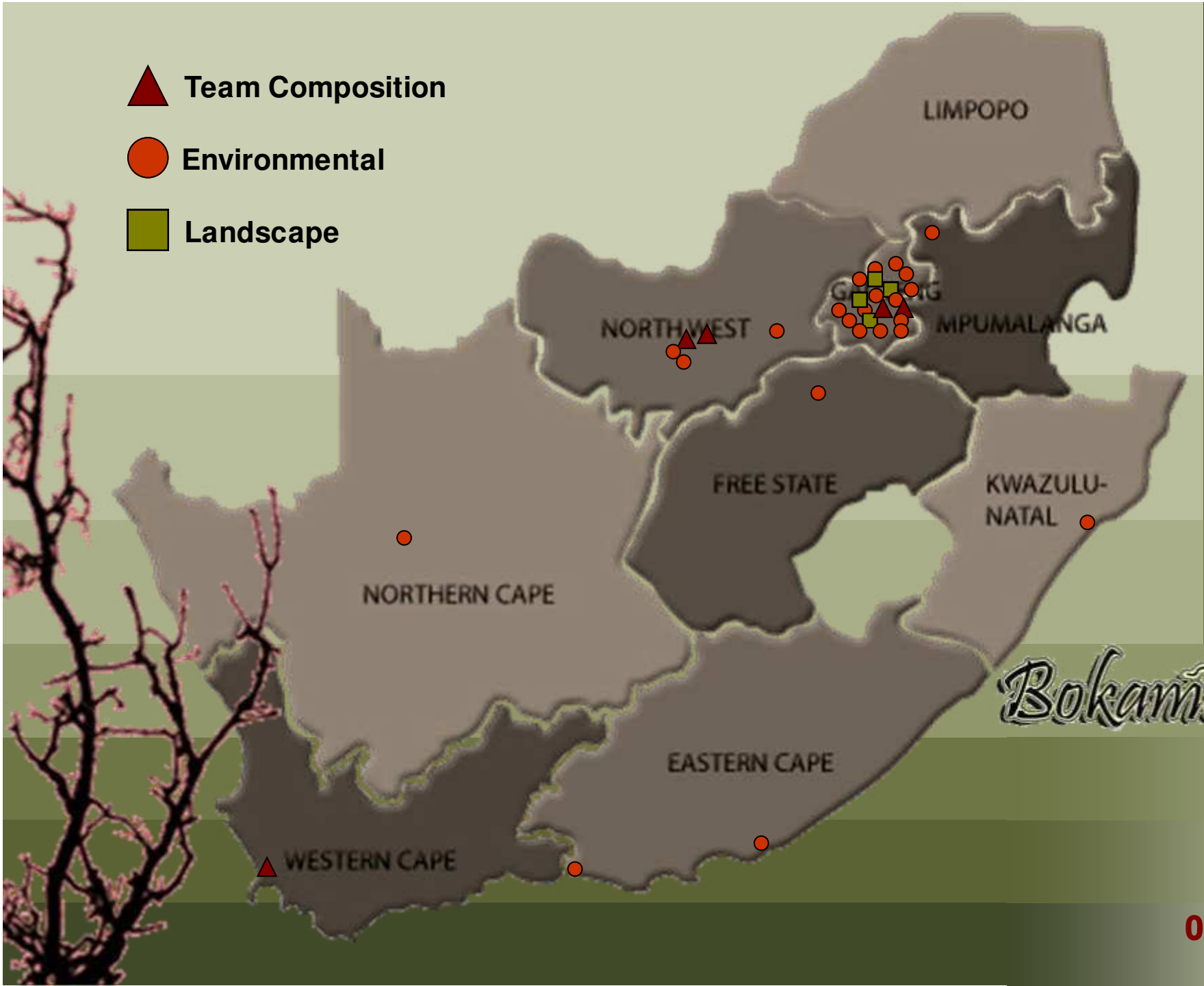
**04 Services**

**042 Contracting Services**

▲ Team Composition

● Environmental

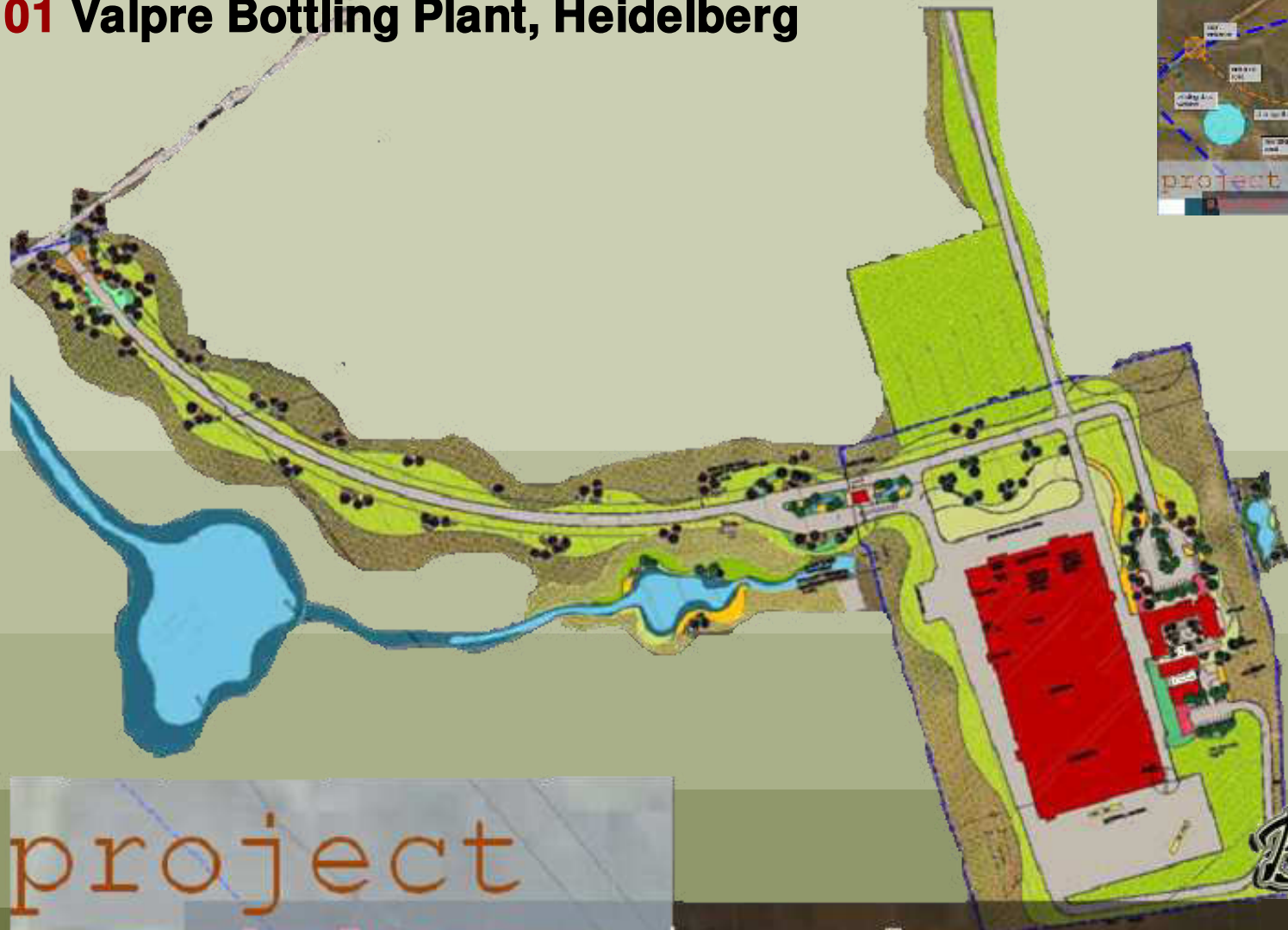
■ Landscape



**04 Services**

**043 Orientation**

# 01 Valpre Bottling Plant, Heidelberg



project  
shelter- site plan

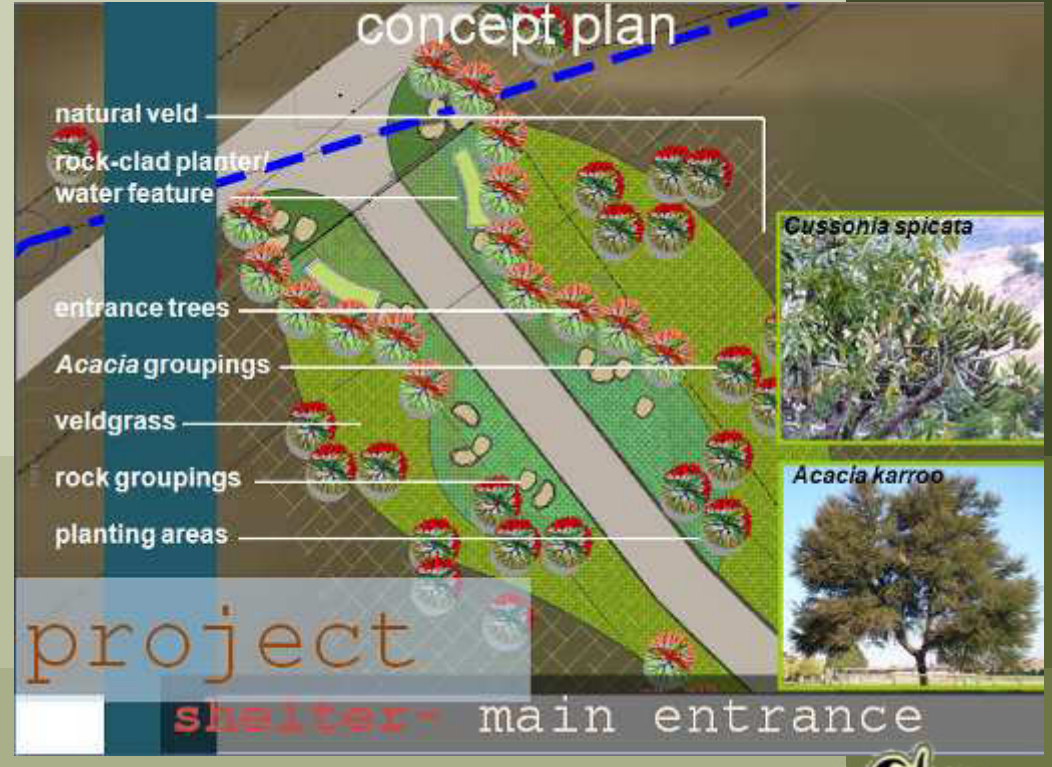
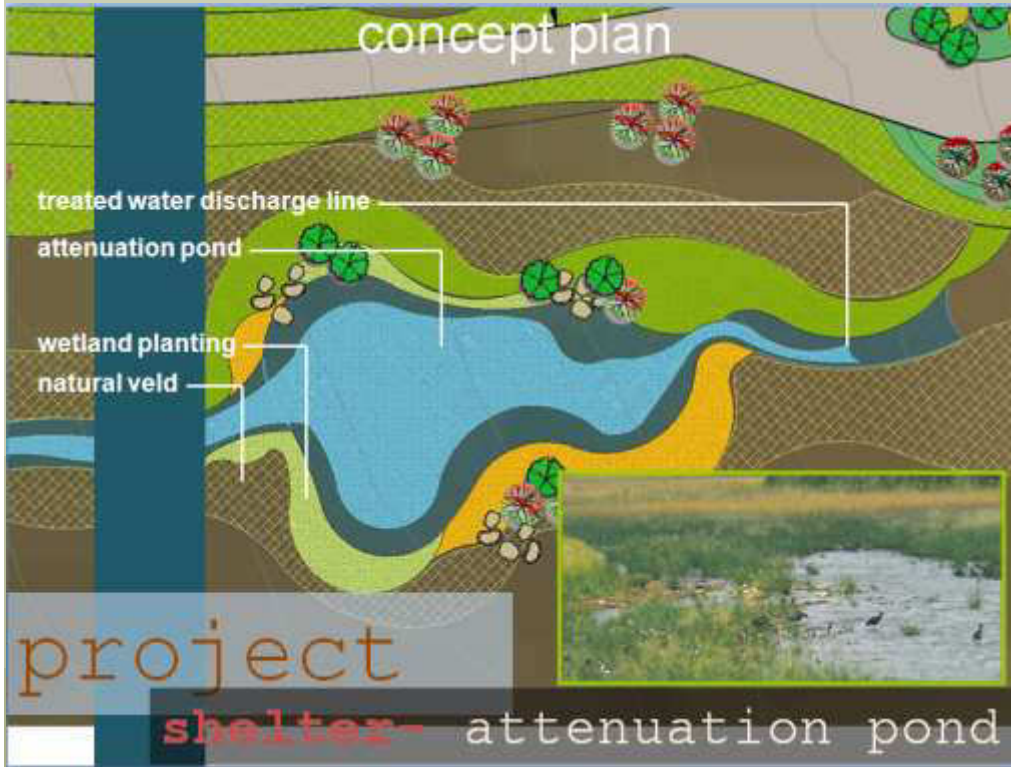


## 05 Landscape Projects- Current

### 051 Commercial



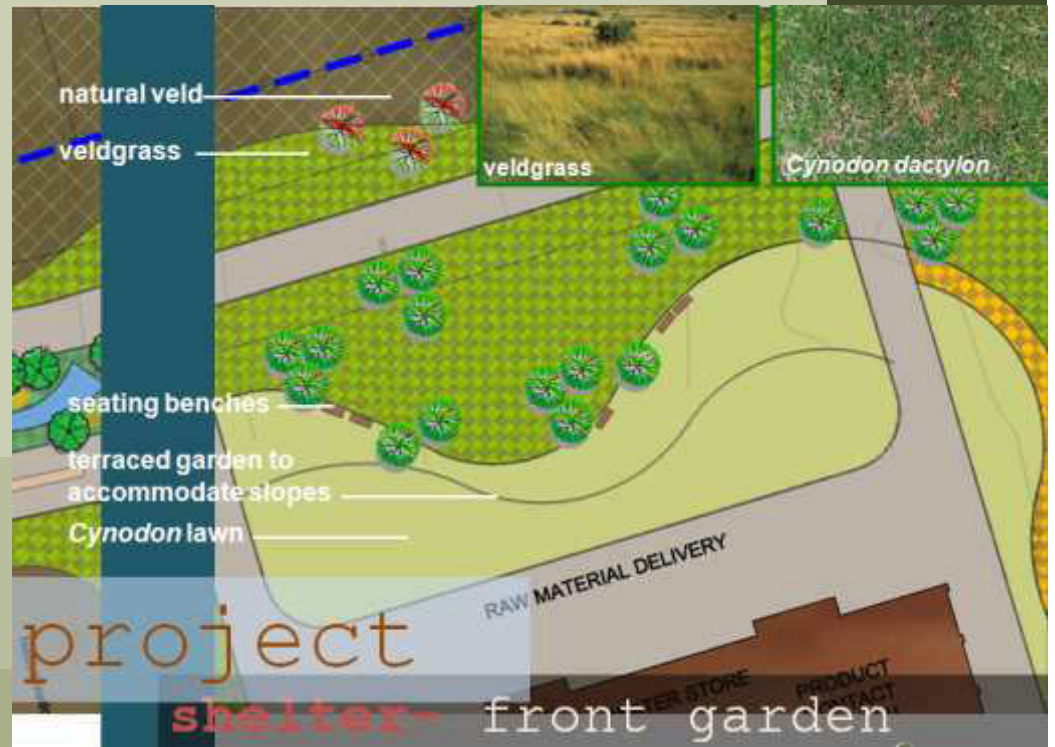
# 01 Valpre Bottling Plant, Heidelberg



## 05 Landscape Projects- Current

### 051 Commercial

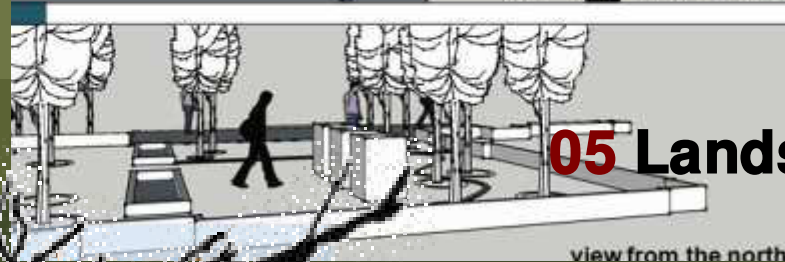
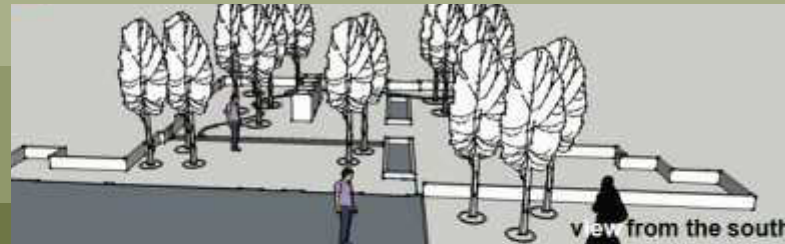
# 01 Valpre Bottling Plant, Heidelberg



## 05 Landscape Projects— Current

### 051 Commercial

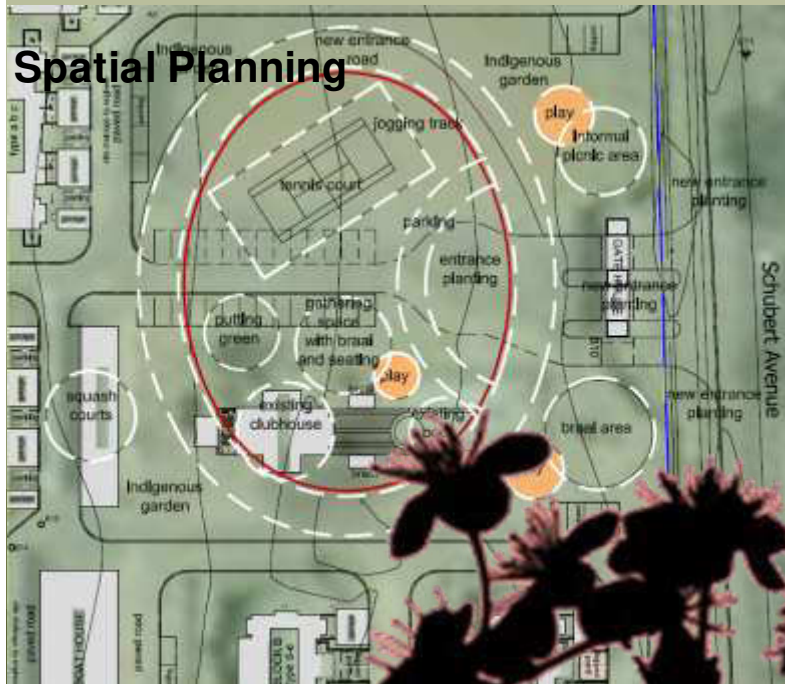
# 01 Valpre Bottling Plant, Heidelberg



**05 Landscape Projects- Current**

**051 Commercial**

## 02 Melodie Waters, Hartebeespoortedam



Streetscape

Indigenous Planting



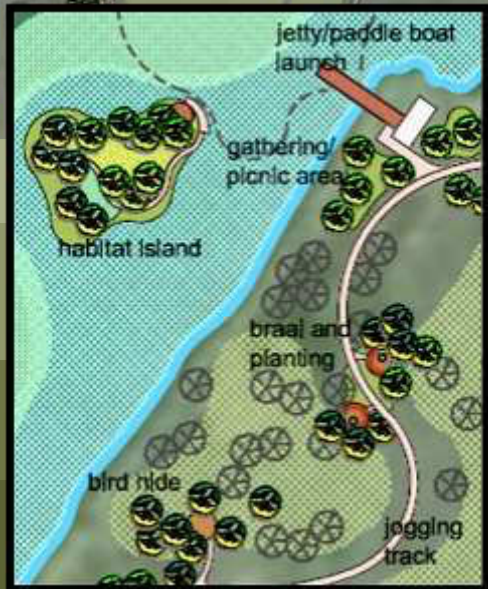
## 05 Landscape Projects – Current

### 052 Commercial/Recreational





## 02 Melodie waters, Hartebeestpoortdam



Rehabilitation



Area Layout



05 Landscape Projects– Current

052 Commercial/Recreational

### 03 Grain Building, Pretoria



*Bokamoso*

**05** Landscape Projects– Completed

**053** Offices

## 04 Ismail Dawson offices, Pretoria



*Bokamoso*

05 Landscape Projects – Conceptual

053 Offices

# 05 Celtic Manor, Pretoria

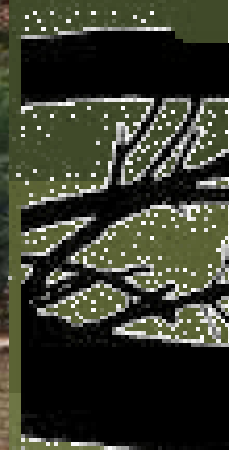
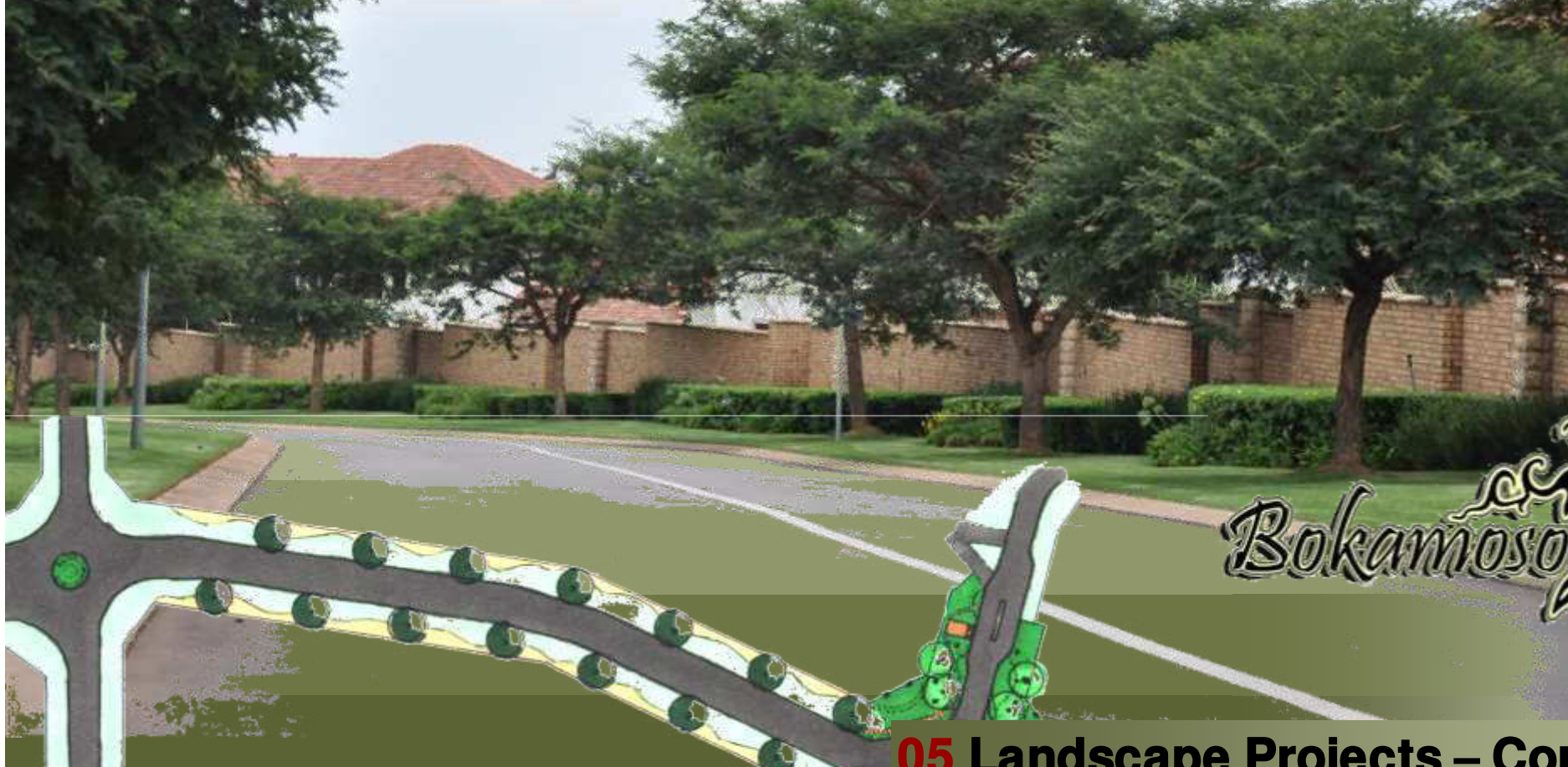


*Bokamoso*

**05 Landscape Projects - Completed**

**054 Complex Development**

**06 The Wilds, Pretoria**



*Bokamoso*

**05 Landscape Projects – Completed**

**054 Complex Development**

# 07 The Wilds, Pretoria

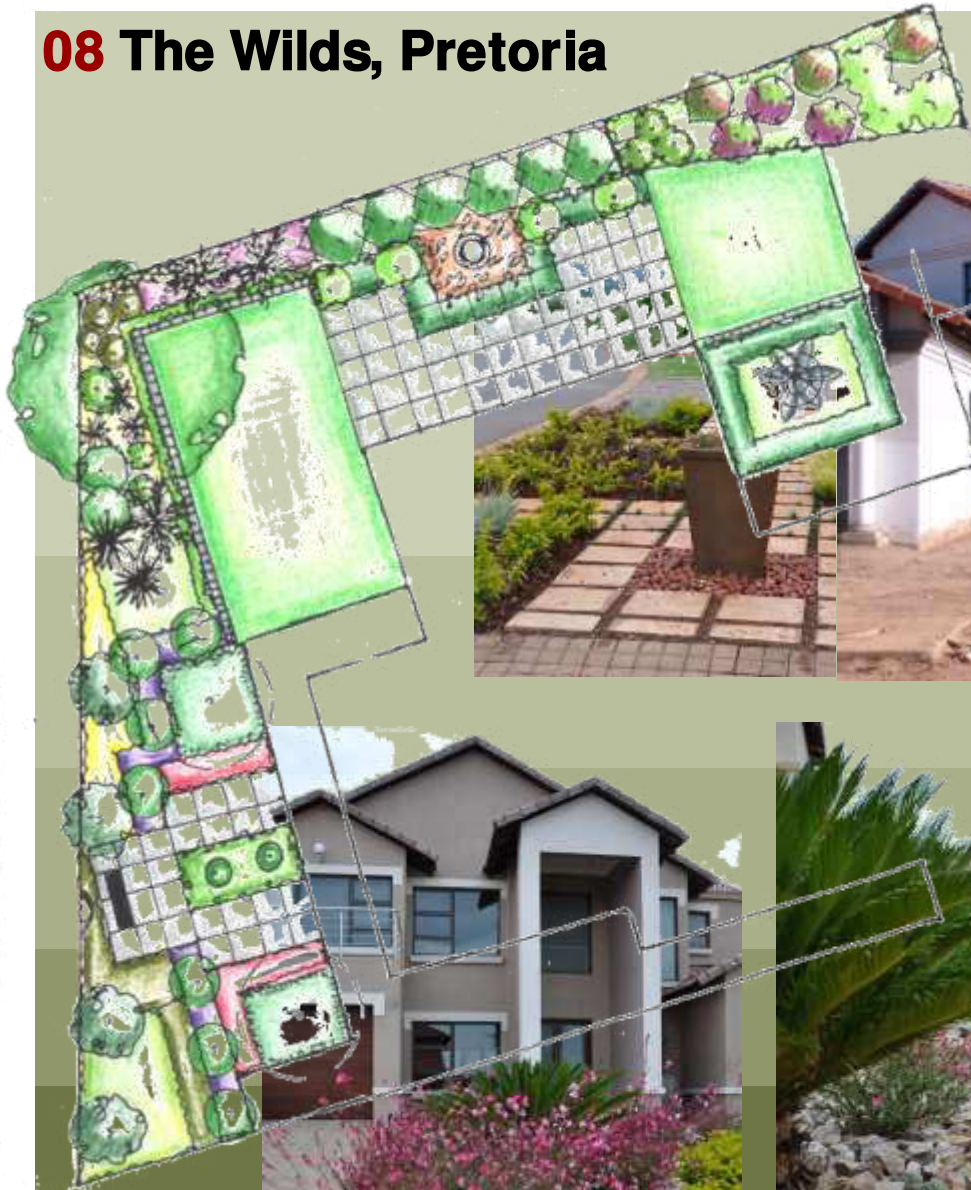


بوكاموسو  
*Bokamoso*

05 Landscape Projects – Completed

055 Residential

# 08 The Wilds, Pretoria



*Bokamoso*

**05 Landscape Projects – Completed**

**055 Residential**

**09 The Wilds, Pretoria**



*Bokamoso*

**05 Landscape Projects – Completed**

**055 Residential**



# 010 The Wilds, Pretoria



*Bokamoso*

**05 Landscape Projects – Completed**

**055 Residential**

# 011 Governor of Reserve Bank's Residence, Pretoria



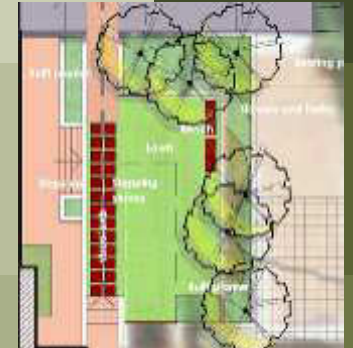
Plant Palette



Option 1



Option 2



05 Landscape Projects – Conceptual

055 Residential

# 012 House Ismail, Pretoria



Front Garden



Back Garden



05 Landscape Projects - Conceptual

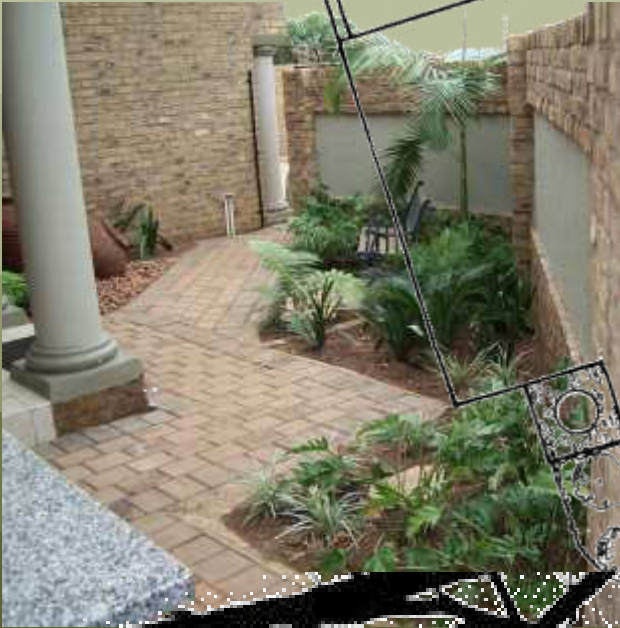
055 Residential



# 013 Forest Garden, Pretoria



# 015 Forest Garden, Pretoria



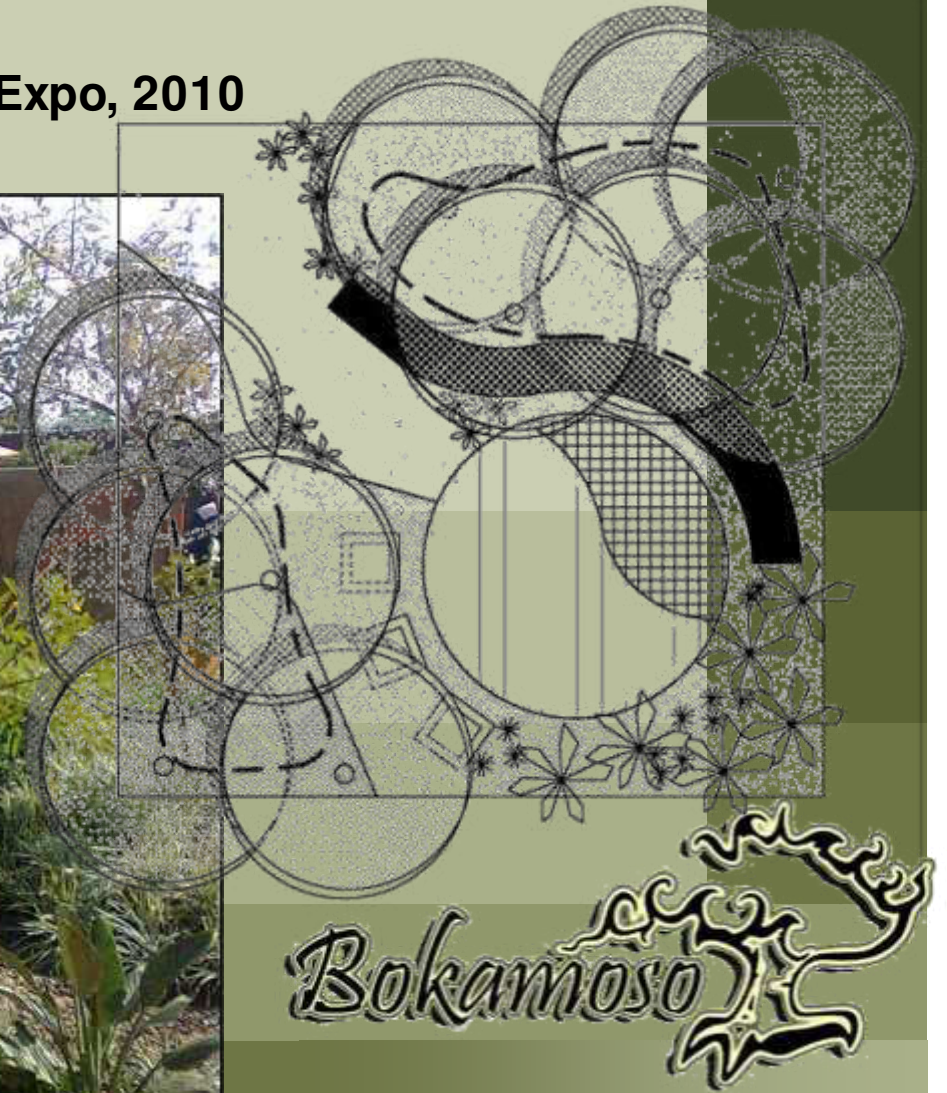
*Bokamoso*

**05** Landscape Projects - Completed

**055** Residential

## 01 Safari Garden Expo

Received a Silver Certificate at the Safari Garden Expo, 2010



06 Corporate Highlights

061 Awards

## **02 UNISA Sunnyside Campus, Pretoria**

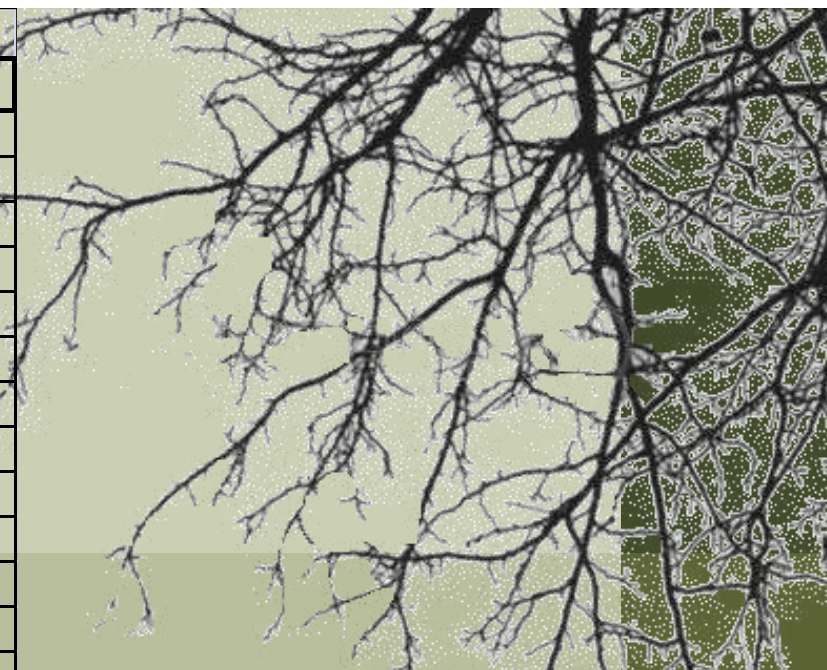
**Best Commercial Paving Plan in Gauteng, 1997**



**06 Corporate Highlights**

**061 Awards**

Project Name	Status	Project
<b>Environmental Impact Assessment(EIA) and Scoping Report</b>		
Junction 21	ROD	EIA
5 O'clock site access	In Progress	EIA
Bokamoso X 1	In Progress	Scoping & EIA
Doornvallei Phase 6 & 7	In Progress	EIA
Engen Interchange	In Progress	Scoping & EIA
Erasmia X15	In Progress	EIA
Franschkloof	In Progress	EIA
K113	Amendment of ROD	EIA
K220 East	ROD	EIA
K220 West	ROD	EIA
K54 ROD conditions	In Progress	EIA
Knopjeslaagte 95/Peachtree	ROD	EIA
Knopjeslaagte portion 20 & 21	ROD	EIA
Lillieslief/Nooitgedacht	In Progress	EIA
Mooiplaats 70 (Sutherland)	In Progress	EIA
Naauwpoort 1 - 12/Valley View	In Progress	EIA
PeachTree X5	In Progress	EIA
Strydfontein 60	In Progress	EIA
Thabe Motswere	In Progress	Scoping & EIA
Vlakplaats	In Progress	EIA
Waterval Valley	In Progress	EIA
<b>Environmental Opinion</b>		
Doornkloof 68 (Ross)	In Progress	Opinion
Monavoni X 53	In Progress	BA & Opinion
Mooikloof (USN)	In Progress	Opinion
Norwood Mall/Sandspruit	In Progress	Opinion
Riversong X 9	In Progress	Opinion
Sud Chemie	In Progress	Opinion
USN Benjoh Fishing Resort	In Progress	Opinion



The adjacent list host the status of our current projects. Only a selected amount of projects are displayed.



**07 Current Environmental Projects**

**071 EIA, Scoping & Opinion**



Project Name	Status	Project
<b>Basic Assessment(BA)</b>		
Annlin X 138	In Progress	BA
Clubview X 29	ROD	BA
Darrenwood Dam	In Progress	BA
Durley Holding 90 & 91	In Progress	BA
Elim	In Progress	BA
Fochville X 3	In Progress	BA
Hartebeeshoek 251	In Progress	BA
Klerksdorp (Matlosana Mall)	In Progress	BA
Monavoni External Services	ROD	BA
Monavoni X 45	Amendment of ROD	BA
Montana X 146	In Progress	BA
Rooihuiskraal X29	In Progress	BA
Thorntree Mall	In Progress	BA

<b>Environmental control officer (ECO)</b>		
Grace Point Church	In Progress	ECO
R 81	In Progress	ECO
Highveld X 61	In Progress	ECO
Mall of the North	In Progress	ECO
Olievenhoutbosch Road	In Progress	ECO
Orchards 39	In Progress	ECO
Pierre van Ryneveld Reservoir	In Progress	ECO
Project Shelter	In Progress	ECO

<b>S24 G</b>		
Wonderboom	In Progress	S24 G
Mogwasi Guest houses	Completed	S24 G



**07 Current Environmental Projects**

**072 BA, ECO & S24 G**

Project Name	Status	Project
<b>Objection</b>		
Colesberg WWTW	In Progress	Objection
Nigel Steelmill	Completed	Objection
Chantilly Waters	Completed	Objection

<b>Development facilitation Act- Input (DFA)</b>		
Burgersfort	In Progress	DFA & BA
Doornpoort Filling Station	In Progress	DFA & EIA & Scoping
Eastwood Junction	In Progress	DFA
Ingersol Road (Erf 78, 81 - 83)	In Progress	DFA
Roos Senekal	In Progress	DFA & EIA & Scoping
Thaba Meetse 1	In Progress	DFA & EIA & Scoping

<b>Water Use License Act (WULA)</b>		
Britstown Bulk Water Supply	In Progress	WULA
Celery Road / Green Channel	In Progress	WULA
Clayville X 46	In Progress	WULA
Dindingwe Lodge	In Progress	WULA
Doornpoort Filling Station	In Progress	WULA+DFA+EIA+SC
Eco Park Dam	In Progress	WULA
Groote Drift Potch	In Progress	WULA
Jozini Shopping Centre	In Progress	WULA+BA
K60	Completed	WULA
Maloto Roads	In Progress	WULA
Kwazele Sewage Works	In Progress	WULA
Monavoni External Services	In Progress	WULA+BA
Nyathi Eco Estate	In Progress	WULA
Prairie Giants X 3	In Progress	WULA
Waveside Water Bottling Plant	Completed	WULA



**07 Current Environmental Projects**

**073 Objection, DFA & WULA**

Project Name	Status	Project
<b>Environmental Management Plan(EMP)</b>		
Heidelberg X 12	ROD	EMP
Monavoni Shopping Centre	Completed	EMP
Forest Hill Development	Completed	EMP
Weltevreden Farm 105KQ	Completed	EMP+EIA
Raslouw Holding 93	Completed	EMP+BA
Durley Development	Completed	EMP+BA
Rooihuiskraal North X 28	Completed	EMP

<b>Rehabilitation Plan</b>		
Norwood Mall/Sandspruit	In Progress	Rehabilitation
Project Shelter Heidelberg	In Progress	Rehabilitation
Sagewood Attenuation Pond	ROD	Rehabilitation
Velmore Hotel	Completed	Rehabilitation
Grace Point Church	Completed	Rehabilitation
Mmamelodi Pipeline	Completed	Rehabilitation

<b>Visual Impact Assessment</b>		
Swatzkop Industrial Developme	Completed	Assessment +DFA
Erasmia	Completed	Assessment

<b>Signage Application</b>		
Menlyn Advertising	Completed	Signage
The Villa Mall	Completed	Signage+EMP+BA



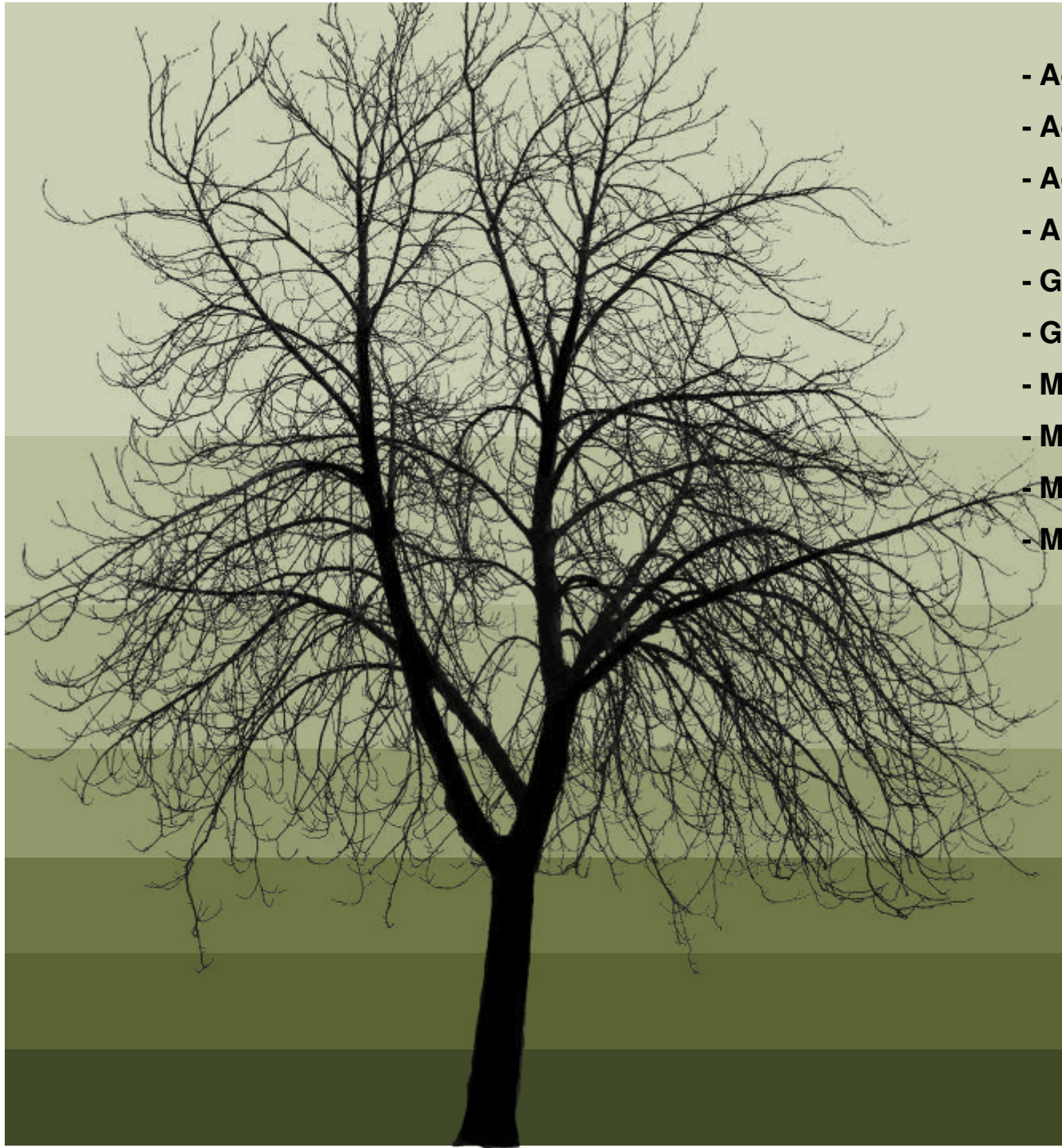
## 07 Current Environmental Projects

074 EMP, Rehabilitation , Waste Management & Signage Application

- Billion Property Group
- Cavaleros Developments
- Centro Developers
- Chaimberlains
- Chieftain
- Century Property Group
- Coca Cola
- Elmado Property Development
- Flanagan & Gerard
- Gautrans
- Hartland Property Group
- Moolman Group
- MTN
- M&T Development
- Old Mutual
- Property Investment Company
- Petroland Developments
- RSD Construction
- SAND
- Stephan Parsons
- Twin City Developments
- Urban Construction
- USN



**08** Indicative Clients



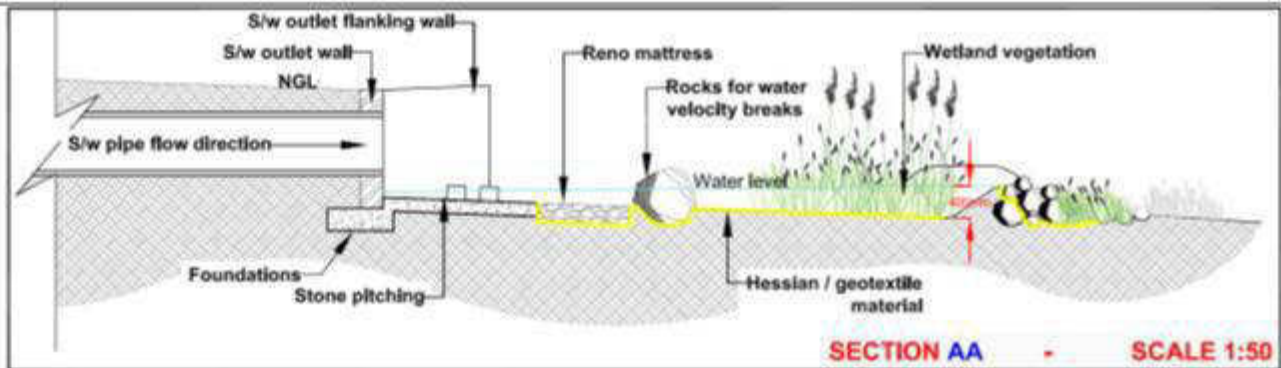
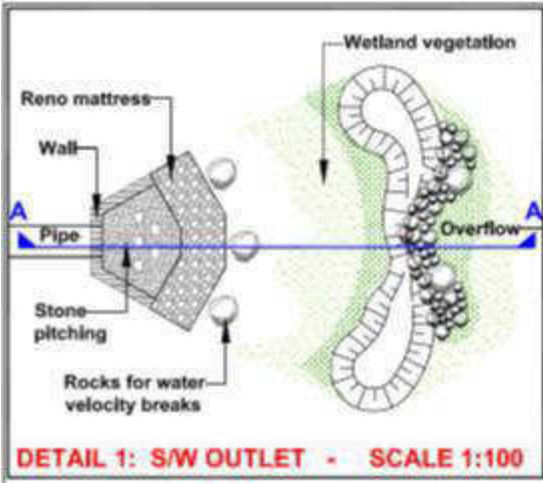
- Adobe Illustrator CS3
- Adobe Photoshop CS3
- Adobe InDesign CS3
- AutoCAD
- Google SketchUP
- GIS
- Microsoft Office Word
- Microsoft Office Excel
- Microsoft Office Publisher
- Microsoft Office Power Point

*Bokamoso* 

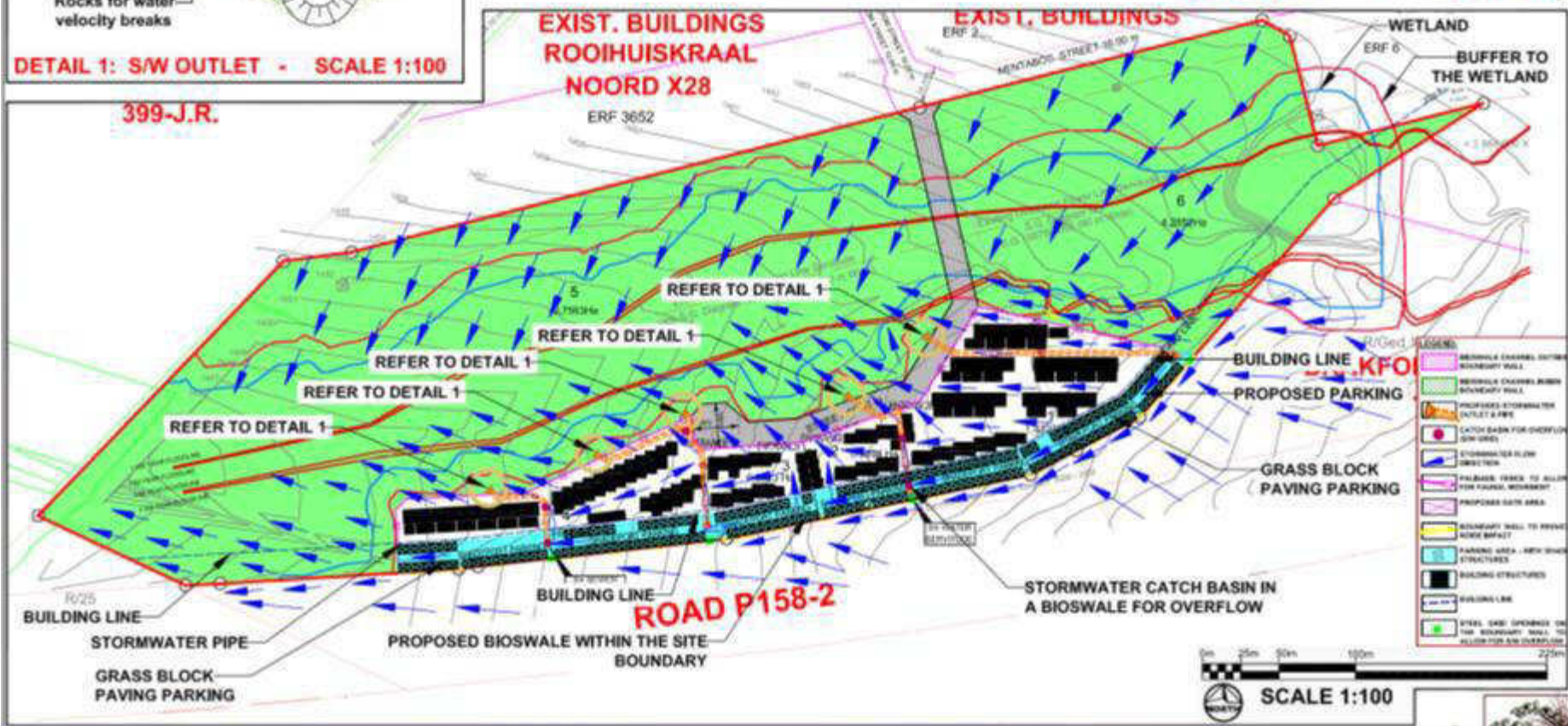


# Appendix Iii

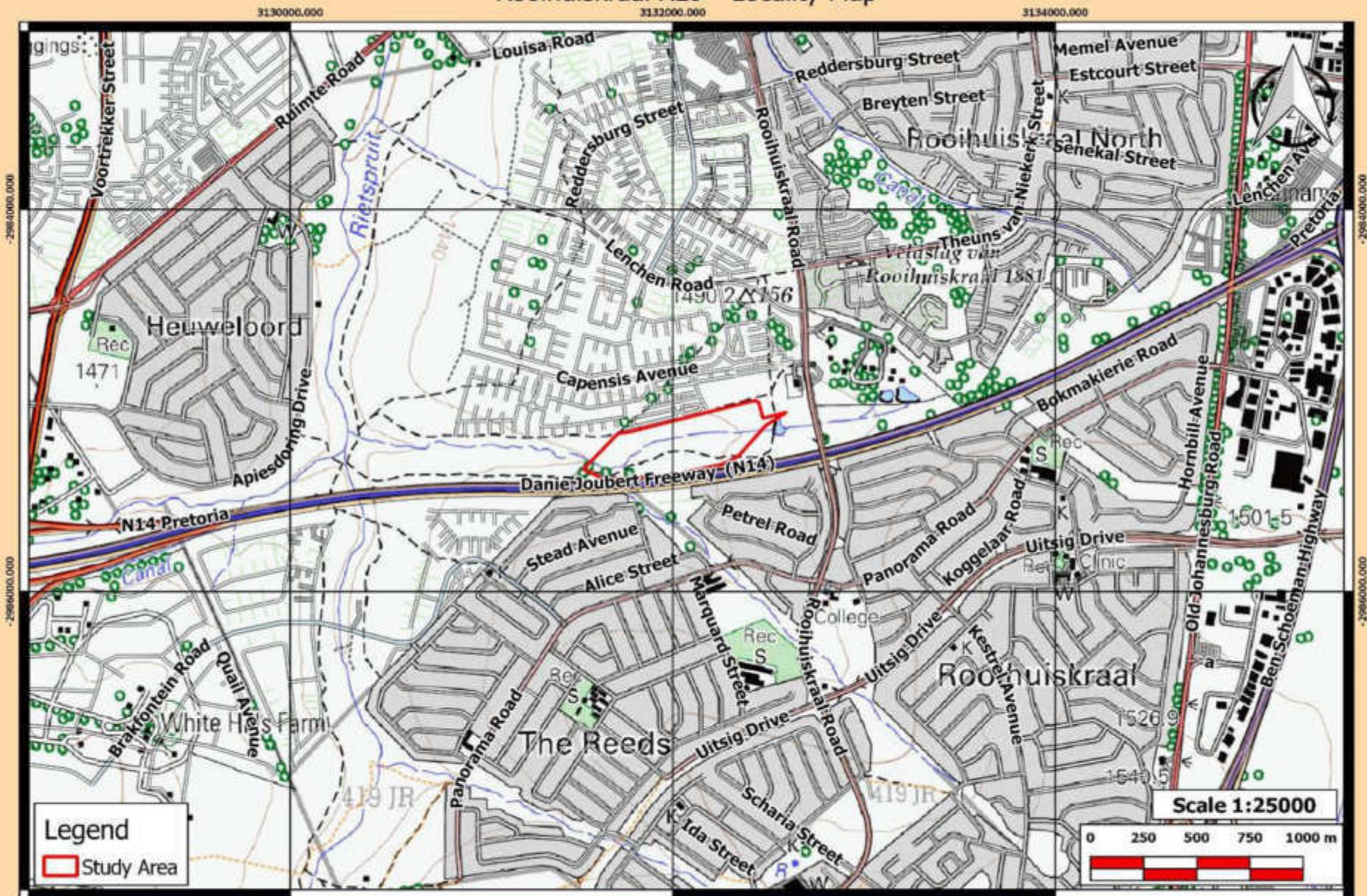
Enlarged Figures



399-J.R.

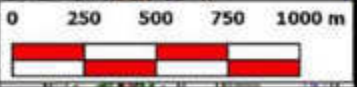


# Rooihuiskraal X29 - Locality Map



**Legend**  
 Study Area

**Scale 1:25000**



Projection - Transverse Mercator  
 Datum - Hartbeeshoek 1994  
 Reference Ellipsoid - WGS 1984  
 Datum - Hartbeeshoek 1994



# Rooihuiskraal X29 - Aerial Map

3132000.000



-2996000.000

3132000.000

-2996000.000

Projection - Transverse Mercator  
Datum - Hartbeeshoek 1994  
Reference Ellipsoid - WGS 1984  
Datum - Hartbeeshoek 1994

Bokamoso Environmental Consultants  
Website: [www.bokamoso.net](http://www.bokamoso.net)  
E-Mail: [Lizelleg@nwweb.co.za](mailto:Lizelleg@nwweb.co.za)

# Rooihuiskraal X29 - Rivers and Wetland Map

3131200.000

3132000.000

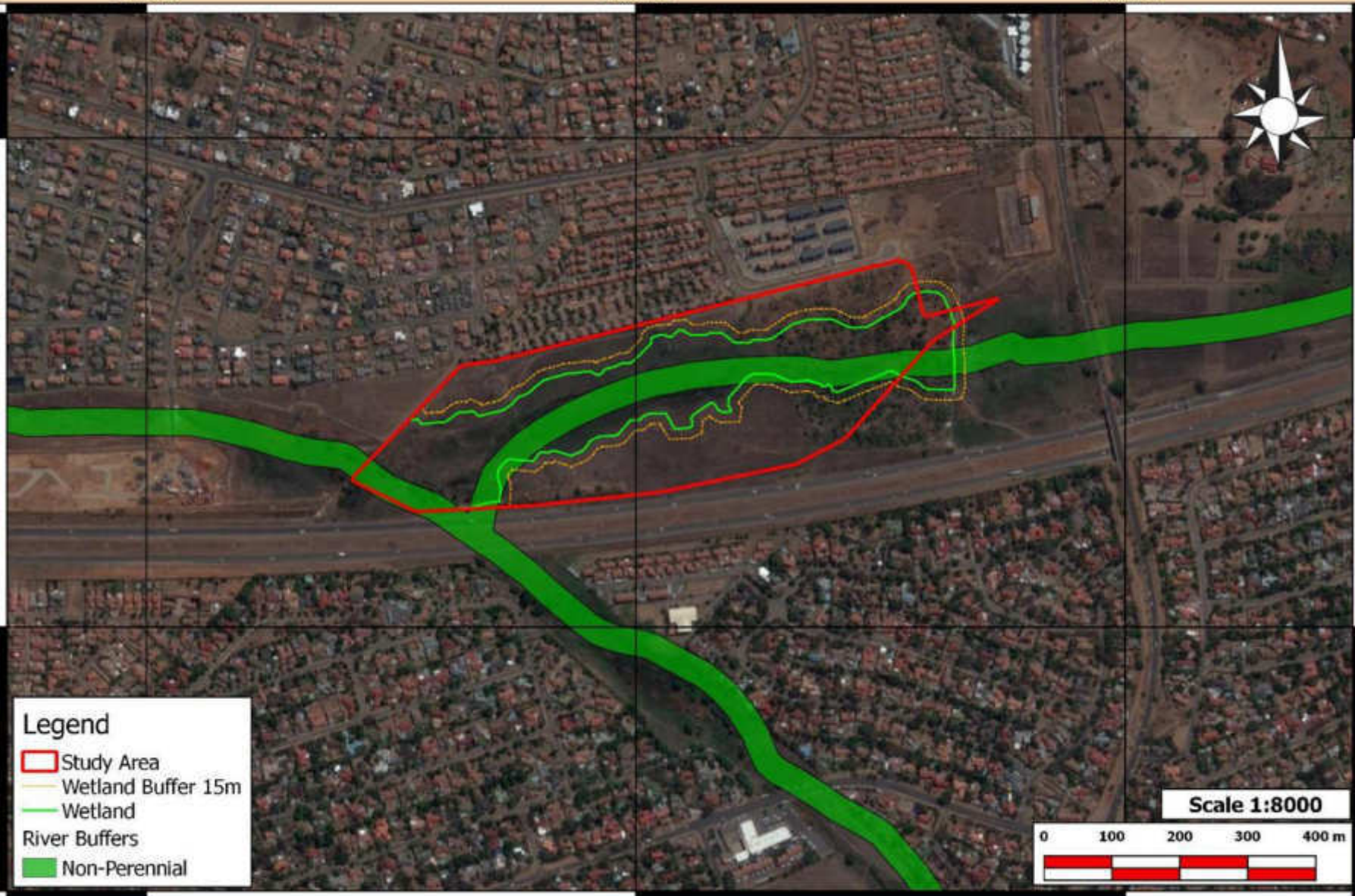
3132800.000

-2984800.000

-2984800.000

-2985600.000

-2985600.000



## Legend

- Study Area
- Wetland Buffer 15m
- Wetland
- River Buffers**
- Non-Perennial

Scale 1:8000

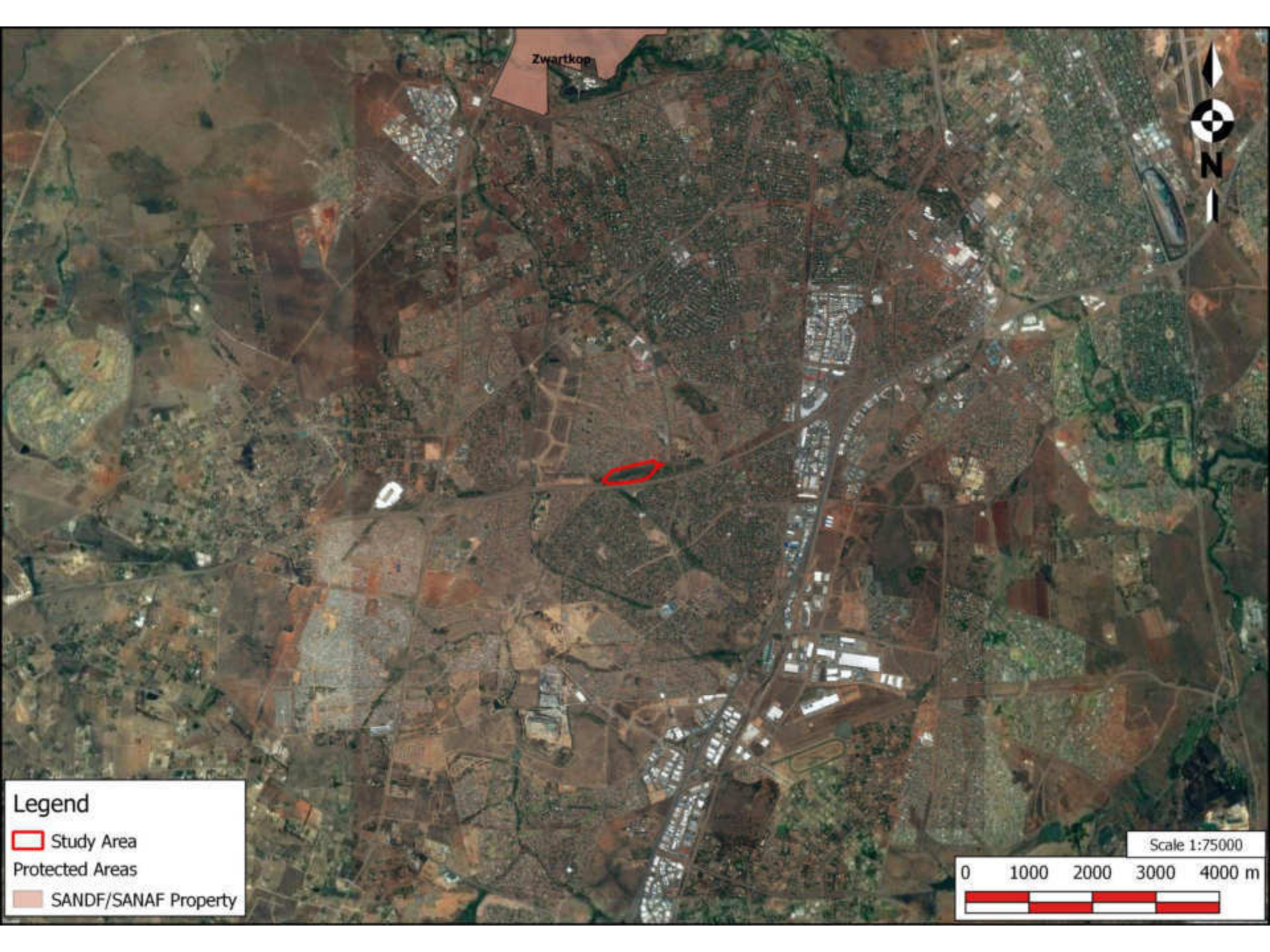


Projection - Transverse Mercator  
Datum - Hartbeeshoek 1994  
Reference Ellipsoid - WGS 1984  
Datum - Hartbeeshoek 1994

3132000.000

3132800.000




Bokamoso Environmental Consultants  
Website: [www.bokamoso.net](http://www.bokamoso.net)  
E-Mail: [Uzelleg@mwvb.co.za](mailto:Uzelleg@mwvb.co.za)



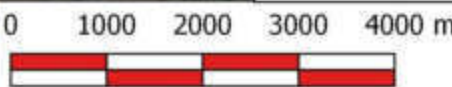
Zwartkop



**Legend**

-  Study Area
-  Protected Areas
-  SANDF/SANAF Property

Scale 1:75000






0 1000 2000 3000 4000 m

# Rooihuiskraal X29 - C Plan Area Map

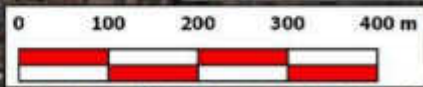
3132000,000



## Legend

-  Study Area
  -  Ecological Support Area
  -  Important Area
- CPLAN AREA

Scale 1:8000



Projection - Transverse Mercator  
Datum - Hartbeeshoek 1994  
Reference Ellipsoid - WGS 1984  
Datum - Hartbeeshoek 1994


Bokamoso Environmental Consultants  
Website: [www.bokamoso.net](http://www.bokamoso.net)  
E-Mail: [Uzelleg@mvweb.co.za](mailto:Uzelleg@mvweb.co.za)

# Rooihuiskraal X29 - C Plan Biodiversity Map


3132000.000



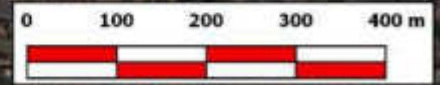
## Legend

 Study Area

C PLAN

 RL plant hab, OL plant hab, Prim veg

Scale 1:8000



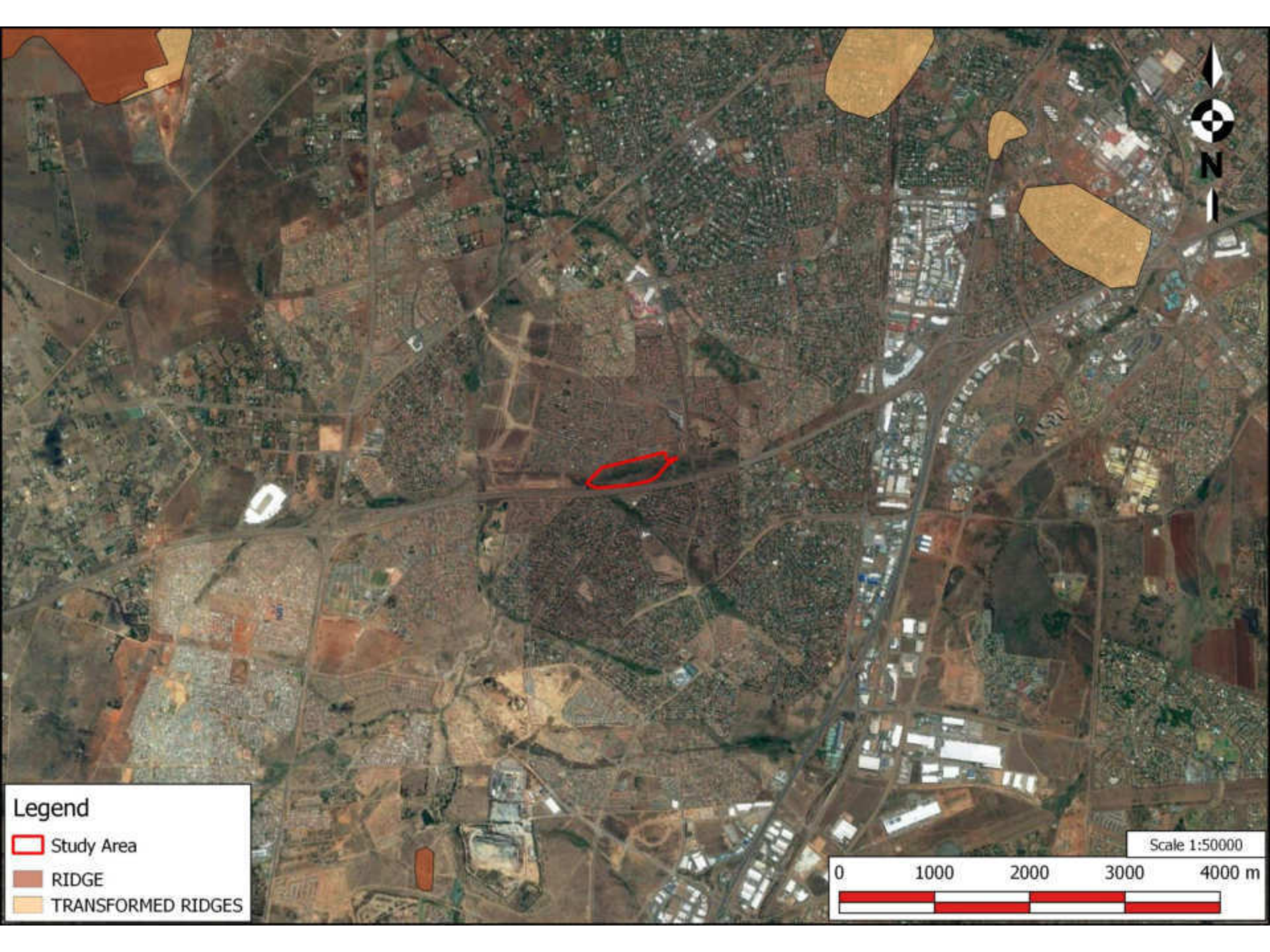
-2995000.000

3132000.000

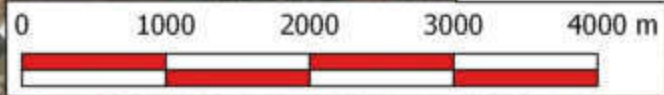
-2995000.000

Projection - Transverse Mercator  
Datum - Hartbeeshoek 1994  
Reference Ellipsoid - WGS 1984  
Datum - Hartbeeshoek 1994




Bokamoso Environmental Consultants  
Website: [www.bokamoso.net](http://www.bokamoso.net)  
E-Mail: [Lizelleg@mvveb.co.za](mailto:Lizelleg@mvveb.co.za)

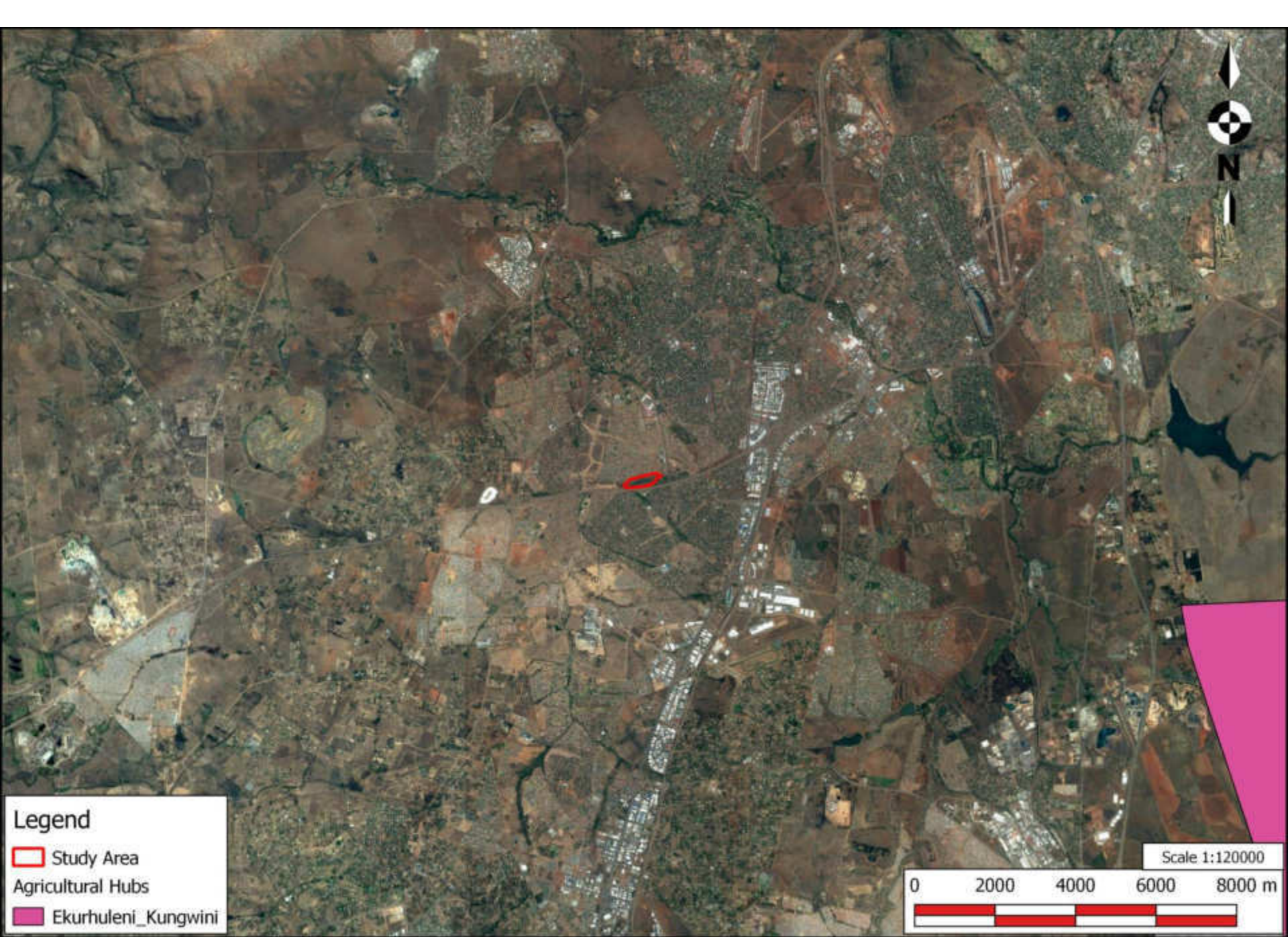


Scale 1:50000



**Legend**

-  Study Area
-  RIDGE
-  TRANSFORMED RIDGES



**Legend**

-  Study Area
-  Agricultural Hubs
-  Ekurhuleni\_Kungwini

Scale 1:120000


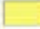
0 2000 4000 6000 8000 m

# Rooihuiskraal X29 - Urban Edge Map

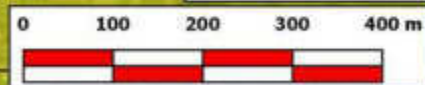
3132000.000



## Legend

-  Study Area
-  URBAN EDGE

Scale 1:8000



3132000.000

Projection - Transverse Mercator  
Datum- Hartbeeshoek 1994  
Reference Ellipsoid -WGS 1984  
Datum- Hartbeeshoek 1994

Bokamoso Environmental Consultants  
Website: [www.bokamoso.net](http://www.bokamoso.net)  
E-Mail: [Lizelleg@nwweb.co.za](mailto:Lizelleg@nwweb.co.za)



## MAP LEGEND:

### ENVIRONMENTAL MANAGEMENT ZONES

- Zone 1
- Zone 2
- Zone 3
- Zone 4
- Zone 5

- Special Control Zones
- Special Control Zone for Conservation, Recreation and Tourism

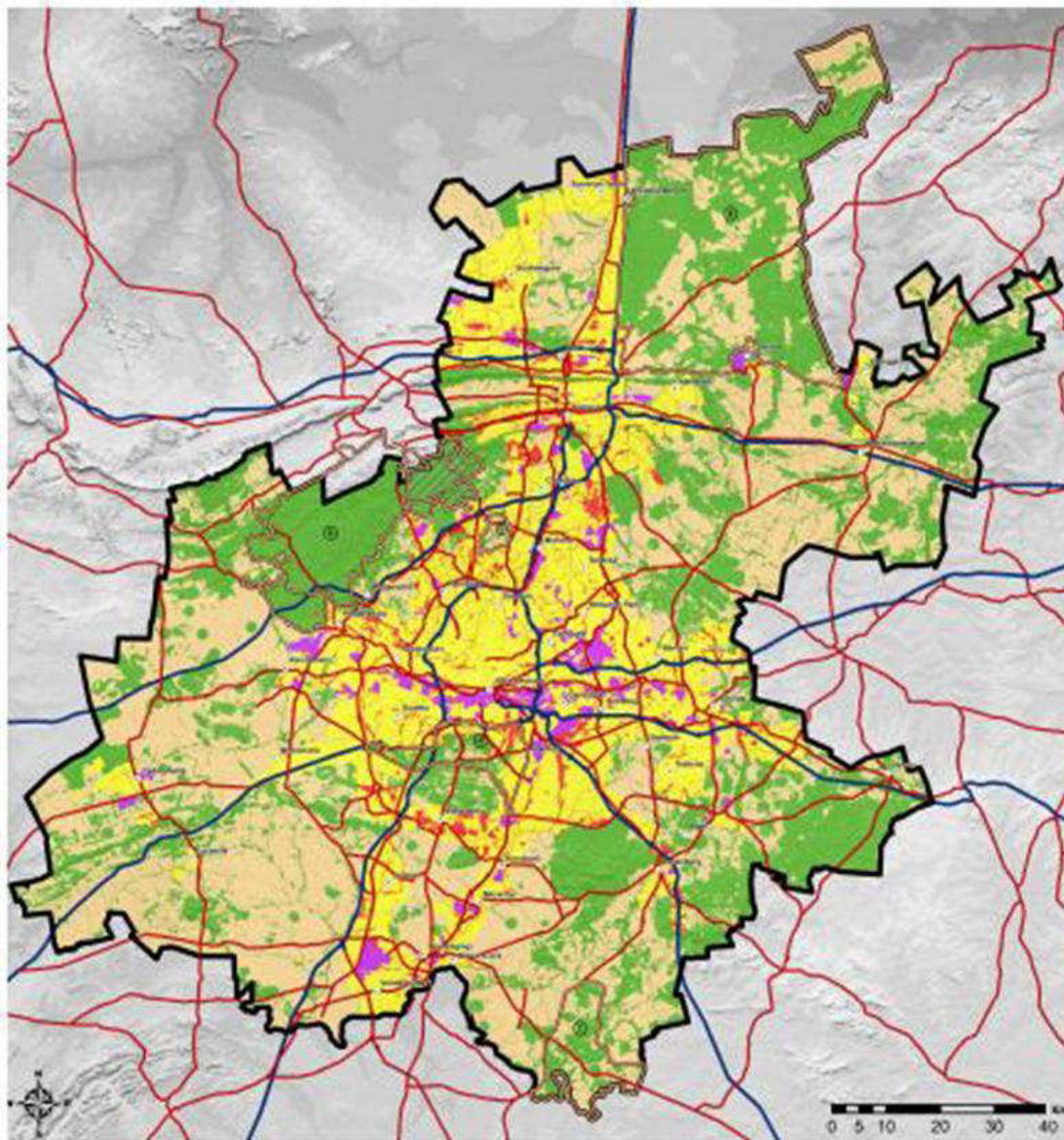
Gauteng Provincial Boundary

#### Roads

- National Road
- Arterial Road

#### Special Control Zones:

- (i) Domburg
- (ii) CofRHS
- (iii) Haddon
- (iv) Rip-Off
- (v) Job North



#### Zone 1: Urban development zone

##### Intention

The intention with this zone is to streamline urban development activities in it and to promote development both, densification and conservation of urban development, in order to establish a more effective and efficient city region that will contribute urban space into rural areas.

#### Zone 2: High control zone (within the urban development zone)

##### Intention

This zone is sensitive to development activities. Only conservation should be allowed in this zone. Retail tourism and recreation activities must be accommodated in areas surrounding this zone.

#### Zone 3: High control zone (outside the urban development zone)

##### Intention

This zone is sensitive to development activities and in several cases also have specific values that need to be protected. Conservation and related tourism and recreation activities should dominate development in this zone.

#### Zone 4: Normal control zone

##### Intention

This zone is dominated by agricultural use outside the urban development zone. Agricultural and rural development that support agriculture should be promoted.

#### Zone 5: Industrial and large commercial focus zone

##### Intention

The intention with Zone 5 is to streamline non-producing industrial and large scale commercial (warehouses etc.) activities in areas that are already used for such purposes and areas that are severely degraded but in proximity to required infrastructure.

#### Protected areas (including formal protected areas and other conservation areas)

##### Intention

Where a management plan for a protected area is in place, it will override the OPMR. Where there is no management plan, the area must be treated as Zone 5.

#### Special control zones (SCZ)

Special control zones are areas that have specific additional objectives that should be taken into account in decision-making processes.

##### SCZ (a) Domburg

The Domburg area has a very high potential for nature tourism activities within an area with a strong nature conservation character. Its location is adjacent to the urban area of Tlokoeng and especially the O.S. Tlokoeng International Airport, makes it an ideal area for wildlife tourism. Other activities that should be promoted include:

- Recreation (especially lodges)
- Rural development that caters for the specific needs of the area, and
- Maintenance of current agricultural activities. Activities that should be avoided as far as possible include:
- Battery farming and facilities
- Mining and sand winning
- Industrial activities, and
- Large commercial and retail developments.

##### SCZ (b) Circle of Humankind World Heritage Site

The purpose of this special zone is to incorporate the Circle of Humankind World Heritage Site into the Gauteng OPMR. It has its own management zones and management guidelines that must be followed.



##### SCZ (c) Vlei Dam

This area has great potential for development that focuses on the following:

- Local tourism focused on the dam's wetland, intensive recreation used in the Vlei Dam
- Conservation of grassland habitat in the area
- Rural development that focuses on tourism and recreation.

#### SCZ (d) Johannesburg South

The Johannesburg South special control zone (Johannesburg Suburbs and Foxgloam Development Zone project area) is special in the sense that it combines several environmental and development features that can form a valuable conservation, recreation, local agricultural and related environment opportunities. It includes the SCZ and OPMR-Initiatives. In addition to the normal OPMR guidelines that will apply to the various zones in this area, decisions should also be taken with due regard to the special initiatives in the area. This includes an emphasis on niche agriculture, hospitality tourism and recreation associated developments. These activities will form the nature and look of economic activities in the area and the integration of agricultural, tourism and recreation into urban.

#### SCZ (e) Johannesburg North (the Greater Shepherd Conservation)

This area is a rural landscape surrounding an urban area. It is important to retain this character as it provides specific services to surrounding areas including:

- Habitat for threatened species
- Recreation (e.g. open spaces) as an exceptional service to the community of Debonair through their programmes with at the youth and children (Initiatives)
- Eco-educational facilities
- Nature trails and hiking of nature guides
- Bird watching facilities
- Green building resource centres
- Urban agriculture projects to increase food security and create employment for neighbouring communities
- Nurseries that grow local indigenous plants and trees
- Trails for mountain biking
- Horse trails, and
- Shared equitation facilities and supporting businesses.

#### SCZ for conservation, recreation and tourism

This area falls mostly within the buffer area of the Domburg. The management plan should at least comply with the restrictions placed on the buffer area in the OPMR Management Guidelines. It also has some areas with a high potential for conservation, local recreation (hiking, mountain biking, etc.) and ecotourism (hospitality). Development decision-making must take the character of this area into account to ensure its potential as an important conservation and recreation area.

Approved under the OPMR

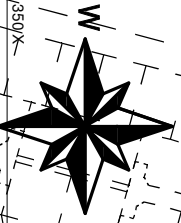
Prepared by

**ENVIRONMENTAL**

and

**PLANNING**





ROOIHUISKRAAL  
NOORD X22

**GEOTECHNICAL ZONES**

The township layout is in accordance with the Geological and Geotechnical Report P1210-01 dated January 2007 done by Dolomite Technology.

*Naamie Pieterse*  
ENGINEERING GEOLOGIST (Pr.Sci.Nat)

ROOIHUISKRAAL  
NOORD X21

ROOIHUISKRAAL  
NOORD X41

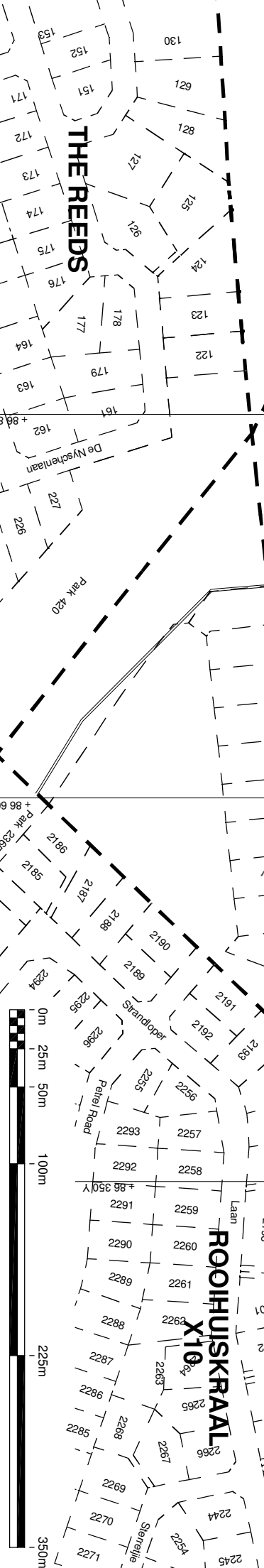
ROOIHUISKRAAL  
NOORD X40 I

ROOIHUISKRAAL  
NOORD X28

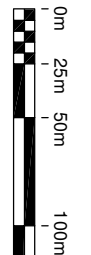
BRAKFONTEIN  
399-J.R.

BRAKFONTEIN  
399-J.R.

THE REEDS

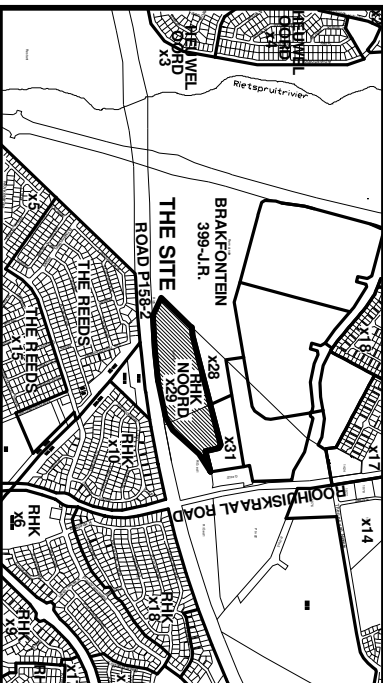


SCALE: 1 : 3500



**PROPOSED TOWNSHIP**  
**ROOIHUISKRAAL**  
**NOORD EXT.29**

SITUATED ON PART OF RE OF PTN.9 AND A PART OF PORTION 145 OF THE FARM BRAKFONTEIN 399-JR



**REFERENCE:**

USES	ERF NO.	AMOUNT	AREA (m <sup>2</sup> )	%
RESIDENTIAL 3	ERVEN 1-4	4	33487m <sup>2</sup>	18,58%
PRIVATE OPEN SPACE	ERVEN 5-6	2	140415m <sup>2</sup>	77,92%
STREET			6298m <sup>2</sup>	3,49%
TOTAL		6	180200m <sup>2</sup>	100%

Min. Gradient of Streets: 1 : 45  
Max. Gradient of Streets: 1 : 17  
Total length of Streets: 350m  
Date: Last Amendment: NOVEMBER 2014

**NOTES:**

- 1.) The figure A to S, A denotes the township boundary.
- 2.) All measurements are approximate.
- 3.) The figure denotes a wetland.
- 4.) The line represents the wetland buffer.

**FLOOD LINE:**

In terms of the Regulations of Article 144 (Act 36 of 1996), is hereby stated that this Township is affected by a floodline with an expected frequency of once every 50 years and one every 100 years in the public stream.

PR. ING. *Jack Marczak*  
9-7-2012

**CONTOURS:**

The contours on this plan are in accordance with Regulation 18 (1)(a)(1) of the Townplanning- and Townships Ordinance, Ord. 15 of 1986. The contours on this plan were obtained from Jack Marczak.

LOCAL AUTHORITY'S NUMBER: RHKNX29/05

PLAN NUMBER: D1212 / 10

LOCAL AUTHORITY: CITY OF TSHWANE

**PLANDEV**

Plander House  
Highveld Office Park  
Charities de Gaullie Crescent  
Highveld  
CENTURION  
Stads- en Streekbeplanners  
Town- and Regional Planners

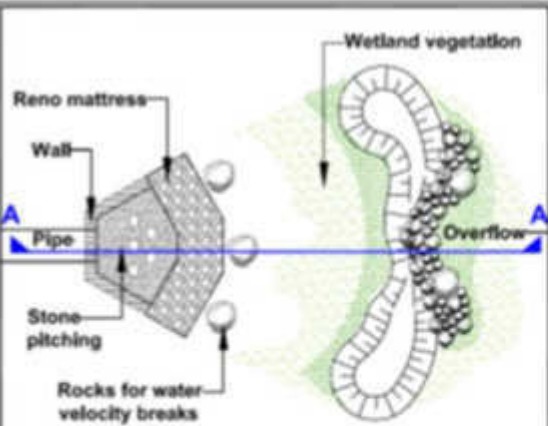


SCALE: 1 : 3500

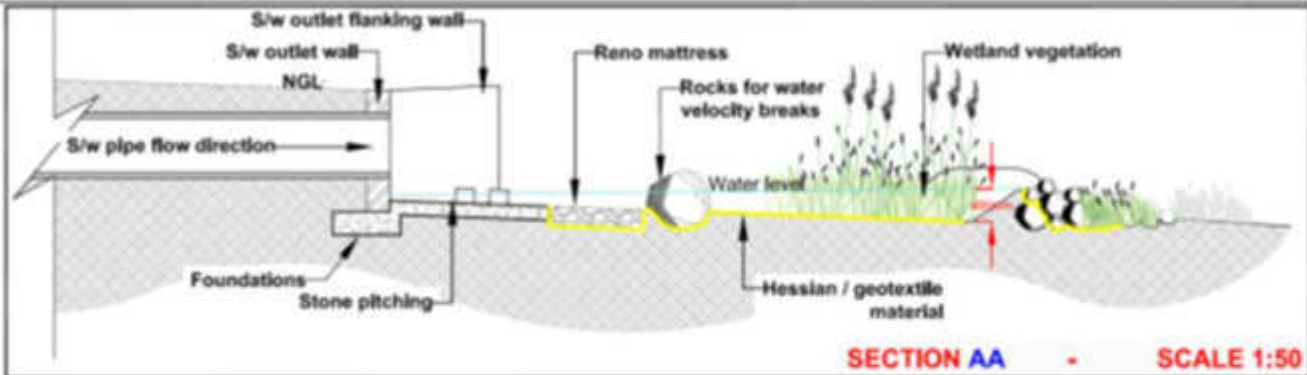
DATE: NOVEMBER 2014





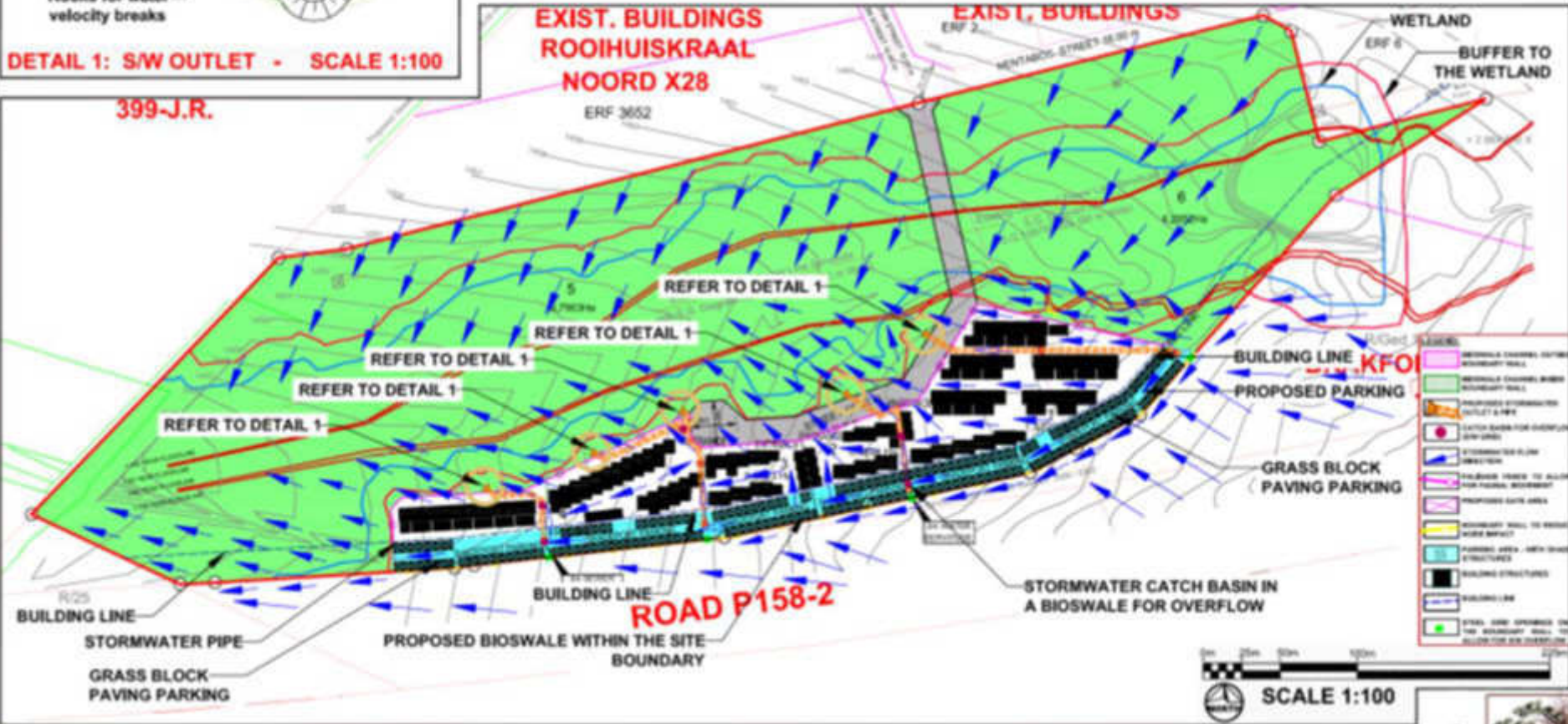


**DETAIL 1: S/W OUTLET - SCALE 1:100**



**SECTION AA - SCALE 1:50**

**399-J.R.**



**SCALE 1:100**

3130000

3131000

3132000

3133000

3134000

-2984000

-2984000

-2985000

-2985000

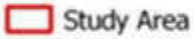
-2986000

-2986000

-2987000

-2987000

### Legend

 Study Area

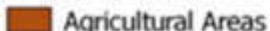
#### Landuse

 Commercial

 Industrial

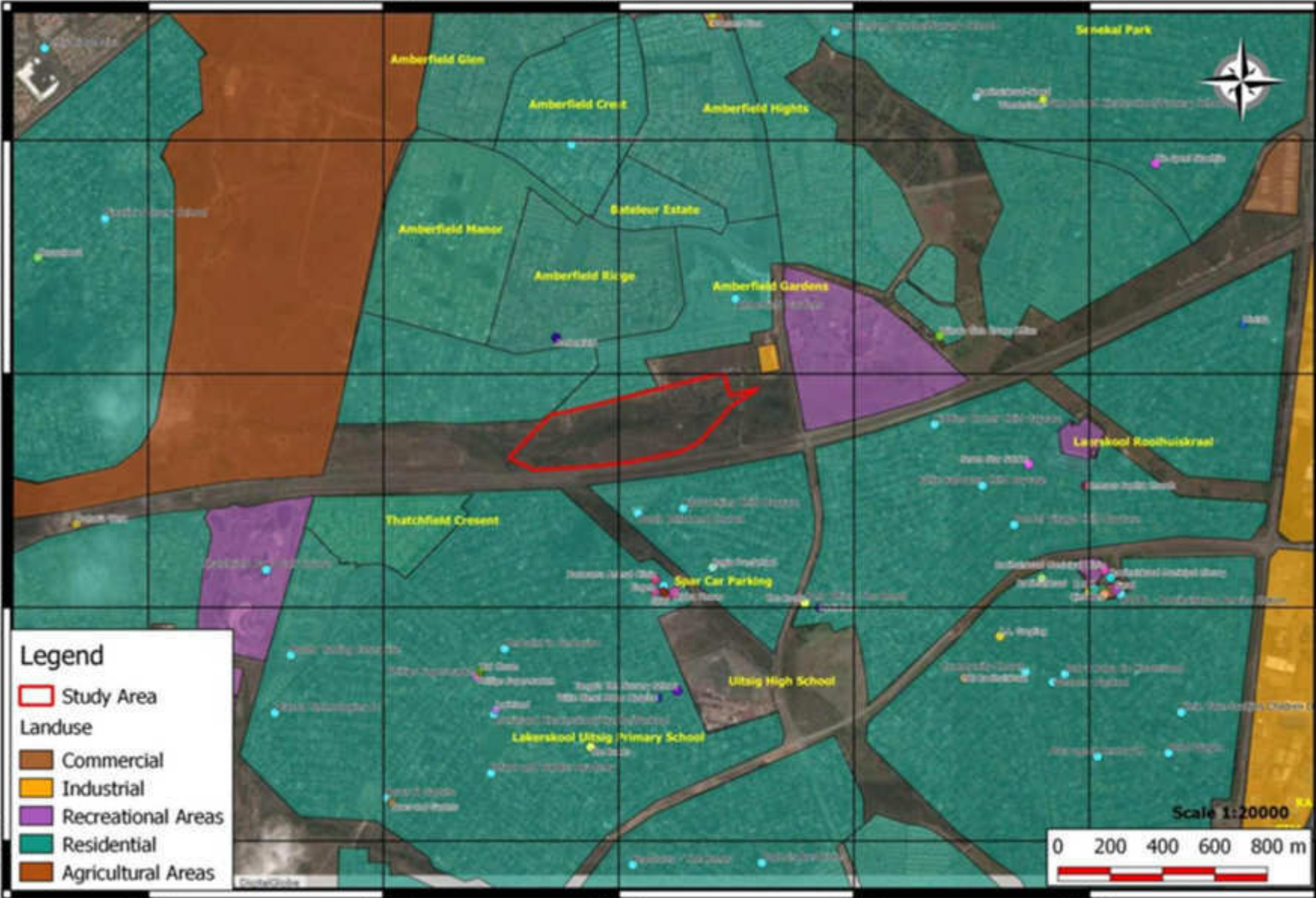
 Recreational Areas

 Residential

 Agricultural Areas

Scale 1:20000

0 200 400 600 800 m





# **Appendix liii**

## Department Correspondence



# agriculture and rural development

Department: Agriculture and Rural Development  
**GAUTENG PROVINCE**

11 Diagonal Street, Diamond Building, Newtown, Johannesburg  
P O Box 8769, Johannesburg, 2000

Telephone: (011) 240-2500

Fax: (011) 240-2700

Website: <http://www.gdard.gpg.gov.za>

Reference:	002/17-18/E0037
Enquiries:	Malesela Sehona
Telephone:	(011) 240-3048
Email:	<a href="mailto:malesela.sehona2@gauteng.gov.za">malesela.sehona2@gauteng.gov.za</a>

**Bokamoso Landscape Architects & Environmental Consultants CC**

**Email/Fax. [reception@bokamoso.net](mailto:reception@bokamoso.net)**

Dear Sir / Madam

## **Application for Environmental Authorisation: Rooihuiskraal North x 29**

The Department acknowledges having received the application form for environmental authorisation of the above-mentioned project on 26/05/2017.

The application has been assigned the reference number Gaut: 002/17-18/E0037. Kindly quote this reference number in any future correspondence in respect of the application.

Please circulate the draft report to any state department that administers a law relating to a matter affecting the environment to comment.

You are required to submit three (3) copies (**1 full colour hard copy and 2 CDs-PDF**) of the Draft Basic Assessment Report as well as proof of submission to state departments referred to above.

In order to determine whether a biodiversity assessment is required and, if so, which specialist studies are required, please send a shapefile (WGS84 datum; geographic co-ordinate system) of the application site to our biodiversity information service ([GDACE\\_BiodiversityInfo@gauteng.gov.za](mailto:GDACE_BiodiversityInfo@gauteng.gov.za)), the e-mail clearly indicating the project reference number. Where biodiversity assessment is required; please ensure that it is



conducted consistent with the *GDACE Requirements for Biodiversity Assessments*. A copy of this document can be obtained by e-mailing [GDACE\\_BiodiversityInfo@gauteng.gov.za](mailto:GDACE_BiodiversityInfo@gauteng.gov.za)

**In terms of Regulation 45 of the EIA Regulations 2014, this application will lapse should you fail to meet any of the time-frames prescribed in terms of these regulations, unless an extension has been granted in terms of regulation 3(7).**

Please draw the applicant's attention to the fact that the activity may not commence prior to an environmental authorisation being granted by the Department in terms of Section 24F of the National Environmental Management Act, Act No 107 of the 1998, as amended.

Yours faithfully

*UBWA*

Boniswa Belot

Deputy Director: Strategic Administration Support

Date: 29/05/2017

CC: Lezmin 1066 BK

Att: J Lewis

Email/Fax: [jarch@mweb.co.za](mailto:jarch@mweb.co.za)