

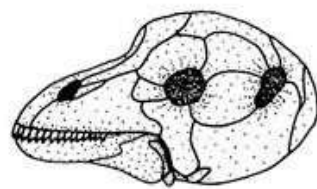
Examples of fossils from the Ecca and Beaufort Groups

Photograph of bones as seen in the field and reconstruction diagrams of some examples from the *Tapinocephalus* Assemblage Zone



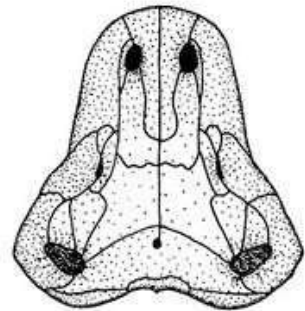
Bones partially exposed

***Tapinocephalus*
Assemblage Zone**



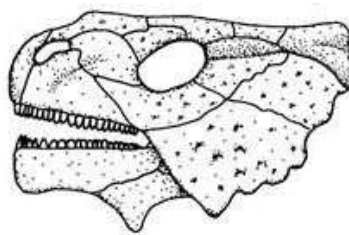
Tapinocephalus

A

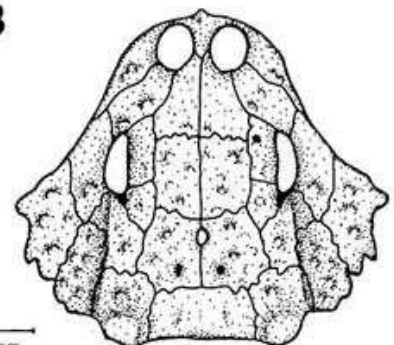


100 mm

B



Bradysaurus



100 mm

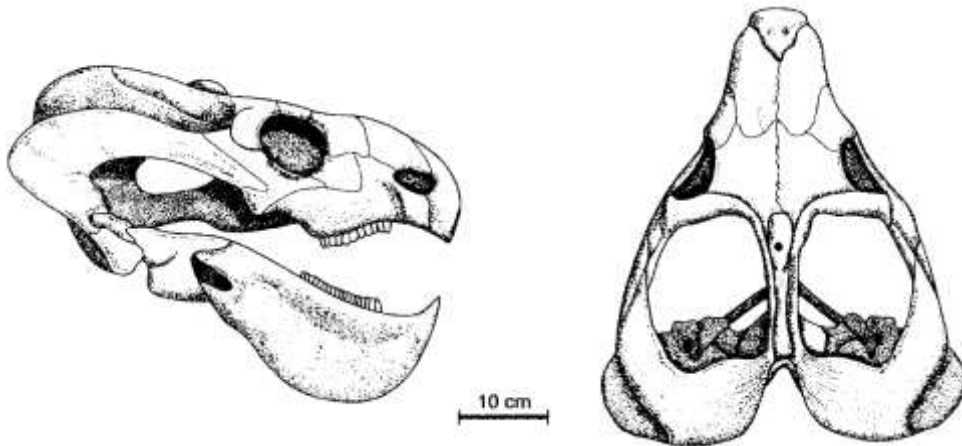
Examples of fossils from the Karoo Supergroup and Quaternary



Selection of *Glossopteris* flora plants from the Vryheid formation
Note bottom right photograph is an example of what fossil bones look like in the field



Quaternary fossils, bones and wood fragments



Diagrams of the index fossil *Endotheriodon* from the lower Adelaide subgroup (From Rubidge, 1995)