

BASIC ASSESSMENT PROCESS

FOR THE PROPOSED UMKHUNYA PHASE 4 WATER SUPPLY SCHEME PROJECT WITHIN UBUHLEBEZWE LOCAL MUNICIPALITY

BACKGROUND INFORMATION DOCUMENT AUGUST 2017



WHAT DOES THIS DOCUMENT TELL YOU?

This document aims to provide you, as an Interested and Affected Party (I&AP), with background information regarding the proposed Umkhunya Phase 4 Water Supply Scheme Project being undertaken by the Harry Gwala District Municipality, in Ward 5 of Ubuhlebezwe Local Municipality.

The document also provides information regarding the Basic Assessment (BA) process to be undertaken for the project. Furthermore, the document advises how you can become involved in the project, receive information and/or raise issues, which may concern and/or be of interest to you. The sharing of information forms the basis of the public participation process and offers you the opportunity to become actively involved in the project from the outset. Public participation plays an important role in the undertaking of a BA as input from I&APs ensures that all potential issues are considered within the study.

WHAT DOES THE PROJECT ENTAIL?

Harry Gwala District Municipality are proposing to construct Phase 4 of the Umkhunya Water Supply Scheme produce potable water from the Umkomazi River to consumers in villages within the immediate project area. The proposed project is situated in the Ubuhlebezwe Local Municipality which is one of the five (5) local municipalities making up Harry Gwala District Municipality.

The proposed pipeline will be within the road reserve, and will transfer water from the proposed water treatment works on the banks of Umkomazi River to the existing Nkweletsheni Reservoir. The existing pipe is much smaller and is not sufficient to supply water to all the surrounding villages. The project was initiated to improve the quality of water supply to residents in the Umkhunya and Jolvet areas in Ward 5 of the Ubuhlebezwe Local Municipality.

The project will consist of:

- Abstraction pump station
- A 5000KI/day water treatment work
- rising mains to existing reservoir

The proposed pipeline capacities and dimensions are as follows:

- A rising main pipeline with an internal diameter of 350 mm;
- Approximately 6830 m in length for the bulk transportation of water; and
- Total flow of 45 l/s.

Site and activity alternatives are not an option as this is enhancement and upgrading of existing water infrastructure in a community that requires the provision of piped water supply.

It appears that the proposed line may be situated within 32 m of a watercourse, which thus triggers the need for an Environmental Authorisation via a Basic Assessment Process.

WHAT ARE THE POTENTIAL ENVIRONMENTAL IMPACTS ASSOCIATED WITH THE PROPOSED PROJECT?

During the assessment process specialist and desk-top studies combined with a site visit will identify potential issues which require further investigation within the Basic Assessment Report.

Specialist studies which have been identified and will be conducted include:

- Ecological Assessment;
- Wetland Delineation; and
- Heritage Assessment

Input from the public through the public participation process provides valuable input in the identification of issues requiring investigation within this BA process. The study will highlight areas that should be avoided in order to minimise potential impacts, and evaluate the project alternatives.

The Basic Assessment will aim to achieve the following:

- to provide an overall assessment of the social and biophysical environment of the affected area by the proposed construction of the project;
- to undertake a detailed assessment of the project in terms of environmental criteria including the rating and significance of impacts;
- to identify and recommend appropriate mitigation measures for significant environmental impacts; and
- to undertake a fully inclusive public participation process to ensure that I&AP issues and concerns are recorded and commented on.

WHY ARE ENVIRONMENTAL STUDIES NEEDED?

In terms of the Environmental Impact Assessment (EIA) Regulations Government Notice Regulation (GNR) No. 324 to 327 of 2017 (as amended), published in terms of Section 24(5), and read with Section 44, of the National Environmental Management Act (NEMA) (Act No. 107 of 1998), the Harry Gwala District Municipality requires environmental authorisation (EA) from the KwaZulu-Natal Department of Economic Development, Tourism and Environmental Affairs (KZN EDTEA) for undertaking the proposed project as it includes activities listed under Regulation 327 and 324 of the NEMA EIA.

The following activities of GNR 327 are being applied for the EA:

- Activity 9 – The development of infrastructure exceeding 1 000m in length for the bulk transportation of water or stormwater- (i) with an internal diameter of 0.36 m or more; or, (ii) with a peak throughput of 120 l/s or more;
- Activity 12 (x) and (xii) – The development of infrastructure or structures with a physical footprint of 100m² or more; where such development occurs (a) within a watercourse; or (c) if no development setback exists, within 32 m of a watercourse, measured from the edge of a watercourse.

The following activities of GNR 324 are being applied for the EA:

- Activity 14 (x) and (xii) – The development of— (x) buildings exceeding 10 square metres in size; (xii) infrastructure or structures with a physical footprint of 10 square metres or more; where such development occurs— (a) within a watercourse; (b) in front of a development setback; or (c) if no development setback has been adopted, within 32 metres of a watercourse, measured from the edge of a watercourse; In KwaZulu Natal

Outside urban areas:

(aa) Areas within 10 kilometres from national parks or world heritage sites or 5 kilometres from any terrestrial protected area identified in terms of NEMPAA or from the core area of a biosphere reserve.

Activities under these listings may have an effect on the environment, hence a BA process, as prescribed in the EIA Regulations (GNR 326), will have to be undertaken. A BA is an effective planning and decision-making tool, which allows for the identification of potential environmental consequences of a proposed project, and its management through the planning process.

The Harry Gwala District Municipality has appointed At Gedezar Consulting as independent Environmental Assessment Practitioner (EAP) to undertake the required environmental studies. As part of these environmental studies, all Interested and Affected Parties (I&APs) will be actively involved through a public participation process (PPP).

PUBLIC PARTICIPATION PROCESS

It is important that relevant I&APs are identified and involved in the public participation process from the outset of the project. To ensure effective public participation, the process includes the following steps:

STEP 1: Advertise the BA Process (local newspaper)

STEP 2: Register I&APs and key stakeholders on the database (on-going)

STEP 3: Consultation with, and transfer of information to, I&APs through consultation and stakeholder engagement

STEP 4: Invite I&AP comment and input on the draft BA report (30-day comment period)

STEP 5: Record all comments, issues and concerns raised by I&APs within an issues trail, which will form an integral part of BA Reports

HOW CAN YOU GET INVOLVED?

1. By responding (by phone, fax or e-mail) to our invitation for your involvement in the process;
2. By completing the attached comment form and mailing or faxing it to At Gedezar Consulting;
3. In writing contacting consultants if you have a query, comment or require further project information; and
4. By reviewing and commenting on the draft BA Report within the allowed 30-day review period.

COMMENTS AND QUERIES

If you consider yourself an I&AP for this proposed project, we urge you to make use of the opportunities created by the public participation process to become involved in the process and provide comment, or raise those issues and concerns which affect and/or interest you, or about which you would like more information. Your input into this process forms a key part of the environmental studies and we would like to hear from you to obtain your views on the proposed project.

By completing and submitting the accompanying response form, you automatically register yourself as an I&AP for this project, and ensure that your comments, concerns or queries raised regarding the project will be noted.

Interested I&AP's are invited to register by submitting their name, contact information and interest in the project to the Environmental and Public Participation consultant before the **23rd September 2017**

Ms. Kuda M Zhandire

At Gedezar Consulting

64 Paige Place, 2 Portsmouth Road,

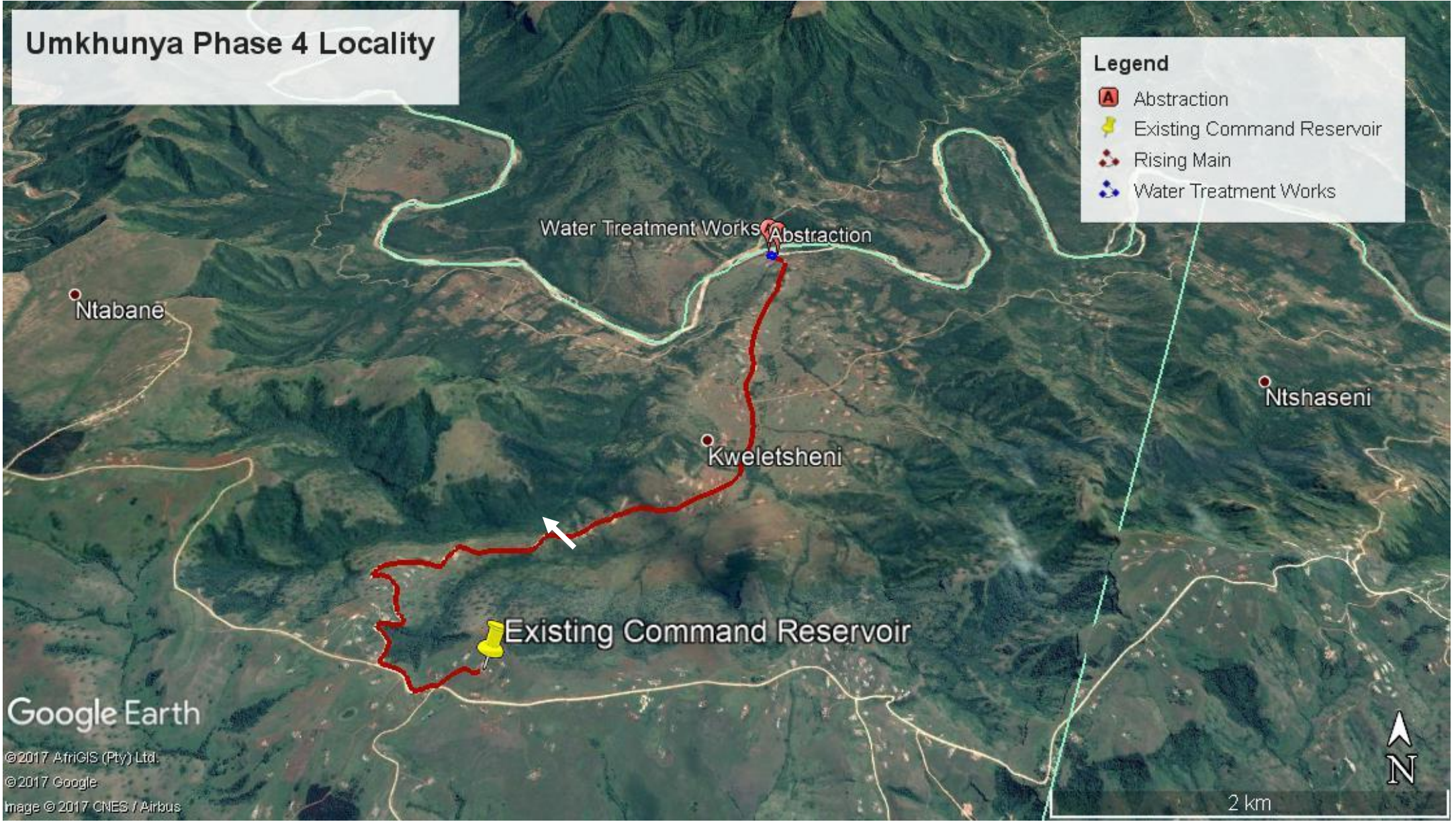
Pinetown, 3600

Direct | 079 962 1987

Fax | 086 723 4520

E-mail | kudazh@gedezar.co.za

Umkhunya Phase 4 Locality



BASIC ASSESSMENT PROCESS

**FOR THE PROPOSED UMKHUNYA PHASE 4 WATER SUPPLY SCHEME
PROJECT WITHIN UBUHLEBEZWE LOCAL MUNICIPALITY**

**COMMENT FORM
AUGUST 2017**



YOUR COMMENTS AND QUERIES ARE WELCOME

Please **complete** this Comment Form in full before **23RD September 2017**, and return to:

Ms Kuda Zhandire

64 Paige Place, 2 Portsmouth Road, Pinetown, 3600

Phone: 079 962 1987

E-mail: andilemn@gedezar.co.za

Fax: 086 723 4520

TITLE (Prof/Mr/Mrs)		FIRST NAME	
SURNAME			
CAPACITY (e.g. Secretary/Director)			
ORGANISATION			
POSTAL ADDRESS		POSTAL CODE	
TEL. NO.: ()		CELL NO.:	
FAX NO: ()		E-MAIL ADDRES:	

What comments / concerns would you like to rise regarding this proposed project? (Please use additional pages, if required)

.....

.....

.....

PLEASE REGISTER THE FOLLOWING PERSON(S) ON THE PROJECT DATABASE:

Name:	Organisation:	
Contact details:		
Address:		
Tel.:	Fax:	Cell:
E-mail:		

IF YOU WOULD NOT LIKE TO RECEIVE ANY FURTHER INFORMATION REGARDING THIS PROPOSED PROJECT AND WOULD PREFER TO BE REMOVED FROM THE PROJECT DATABASE, PLEASE TICK THE BOX BELOW AND RETURN THE FORM TO THE PUBLIC PARTICIPATION CONSULTANTS WHO'S CONTACT DETAILS ARE PROVIDED ABOVE.

<input type="checkbox"/> YES, Please remove me from the project database	SIGNATURE:
---	-------------------