

EVANDER GOLD MINES (PTY) LTD

ATTENTION: INTERESTED AND/OR AFFECTED PARTY NOTICE OF A BASIC ENVIRONMENTAL IMPACT ASSESSMENT DEVELOPMENT OF A WATER TREATMENT PLANT

1. Introduction

Notice is hereby given that Evander Gold Mines (EGM) intends to develop a Water Treatment Plant (WTP) for the treatment of water emanating from underground dewatering activities. The EGM WTP will be approximately 2 500 m² in extent and will be developed on an existing disturbed area. The facility will be located adjacent to the existing EGM Tailings Storage Facility (near the Elikhulu facility) and will have a maximum processing capacity to treat 11 000 m³ of water per day. The water will be treated to a potable water standard (SANS 241) and will be used to supplement water use requirements at EGM.

The development of the proposed WTP triggers activity 25 listed as described below in Listing Notice 1 (GNR 326) published in terms of the National Environmental Management Act (No. 107 of 1998).

Activity 25: The development and related operation of facilities or infrastructure for the treatment of effluent, wastewater or sewage with a daily throughput capacity of more than 2 000 cubic metres but less than 15 000 cubic metres.

Therefore, a Basic Environmental Impact Assessment (BA) process will be undertaken to obtain an Environmental Authorisation (EA) for the proposed facility.

A public participation process must be undertaken in terms of the EIA regulations (GNR 326 of 2017) to inform all relevant Interested and Affected Parties of the proposed project and allow the IAPs to comment. This letter serves to **notify you as a landowner, lawful occupier, interested or affected party of the EIA process that are being undertaken**. EXM Advisory Services (Pty) Ltd has been appointed as the Independent Environmental Assessment Practitioners (EAP) responsible for administering the abovementioned application process:

PURPOSE:

This document serves to:

- Notify you of the EIA process.
- Describe the application processes.
- Inform you as to how you can provide input into the process.

YOUR ROLE:

As an interested and affected party, your role is to:

- Ask questions, raise issues and concerns.
- Attend public meetings.
- Review and provide comment on environmental reports.

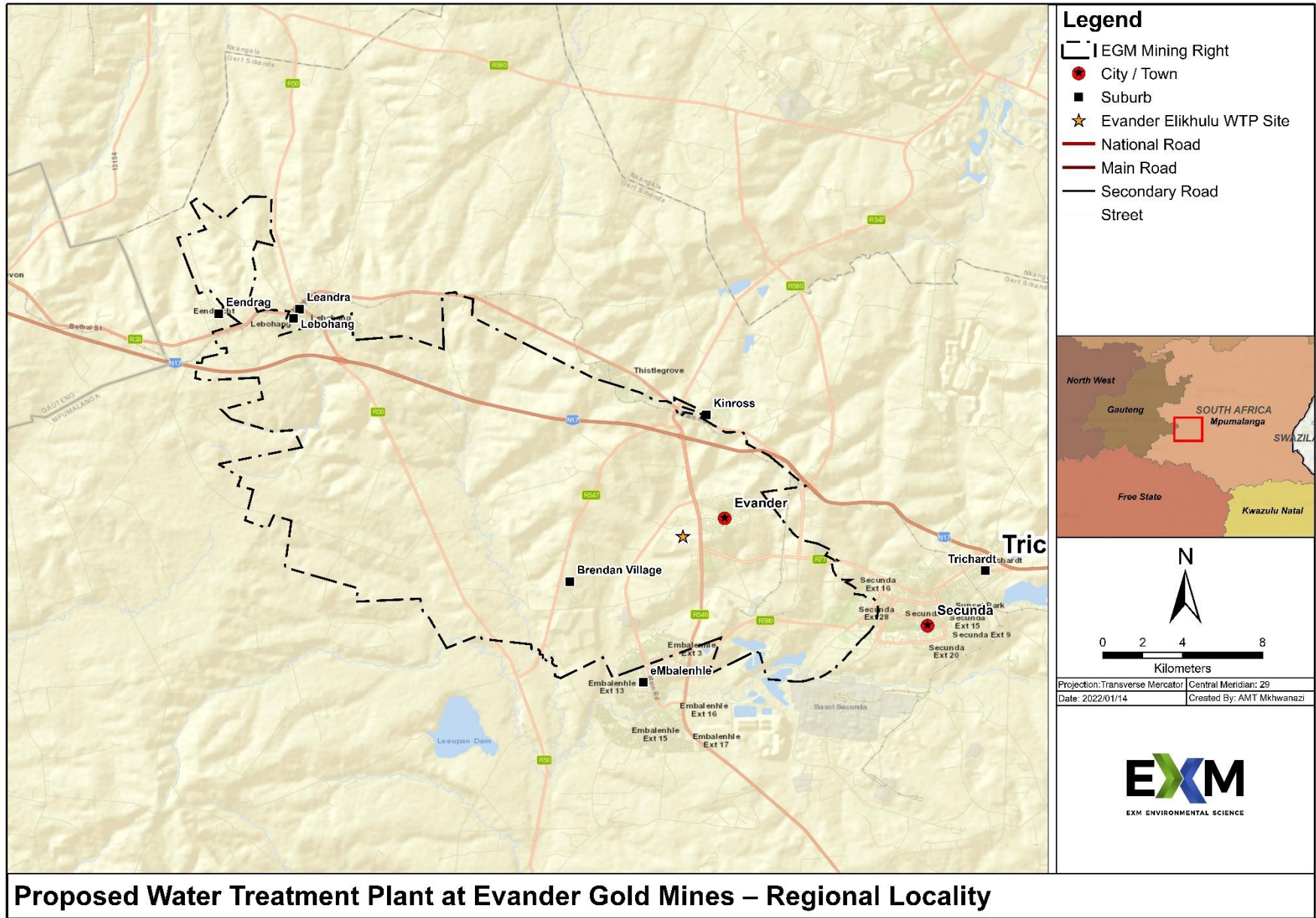


FIGURE 1: GENERAL LOCATION OF THE PROPOSED WATER TREATMENT PLANT

2. Preliminary Overview of the of the proposed Water Treatment Plant

Evander Gold Mines (Pty) Ltd (EGM) undertakes underground gold mining operations near the town of Evander in the Mpumalanga Province. EGM also conducts reprocessing of existing Tailings Storage Facilities (TSF) to extract gold remaining in the tailings at the Elikhulu processing facility. EGM is the owner of a converted mining right (126MR) and has also obtained an Environmental Authorisation (EA) (MP 30/5/1/2/2 (126) EA) for the development of the Elikhulu plant and reprocessing of the existing TSFs which is done as part of the overall EGM mining operations. EGM also has an approved Environmental Management Programme (EMPr) for the mining operations and the Elikhulu plant.

EGM proposes to develop a Water Treatment Plant (WTP) for the treatment of water emanating from underground dewatering activities. The EGM WTP will be approximately 2 500 m² in extent and will be developed on an existing disturbed area. The facility will be located adjacent to the existing EGM Tailings Storage Facility (near the Elikhulu facility) and will have a maximum processing capacity to treat 11 000m³ of water per day. The water will be treated to a potable water standard (SANS 241) and will be used to supplement water use requirements at EGM and the Elikhulu facility and reduce pressure on natural resources and the municipal supply.

A pipeline of approximately 4.3km will also be developed from the WTP to the shaft #8 complex for the conveyance of water. The pipeline will have a diameter of approximately 125mm and will have a maximum flow of 25 liters per second. The pipeline will run on existing pipeline supports and will use existing culverts for all road crossings outside the mine, therefore no additional disturbance is anticipated.

Apart from the pipeline, the proposed project will entail the development of the following infrastructure:

- Raw water and processing tanks;
- Pumps and piping;
- Concrete foundation;
- Flow meters and valves; and
- Electrical infrastructure.

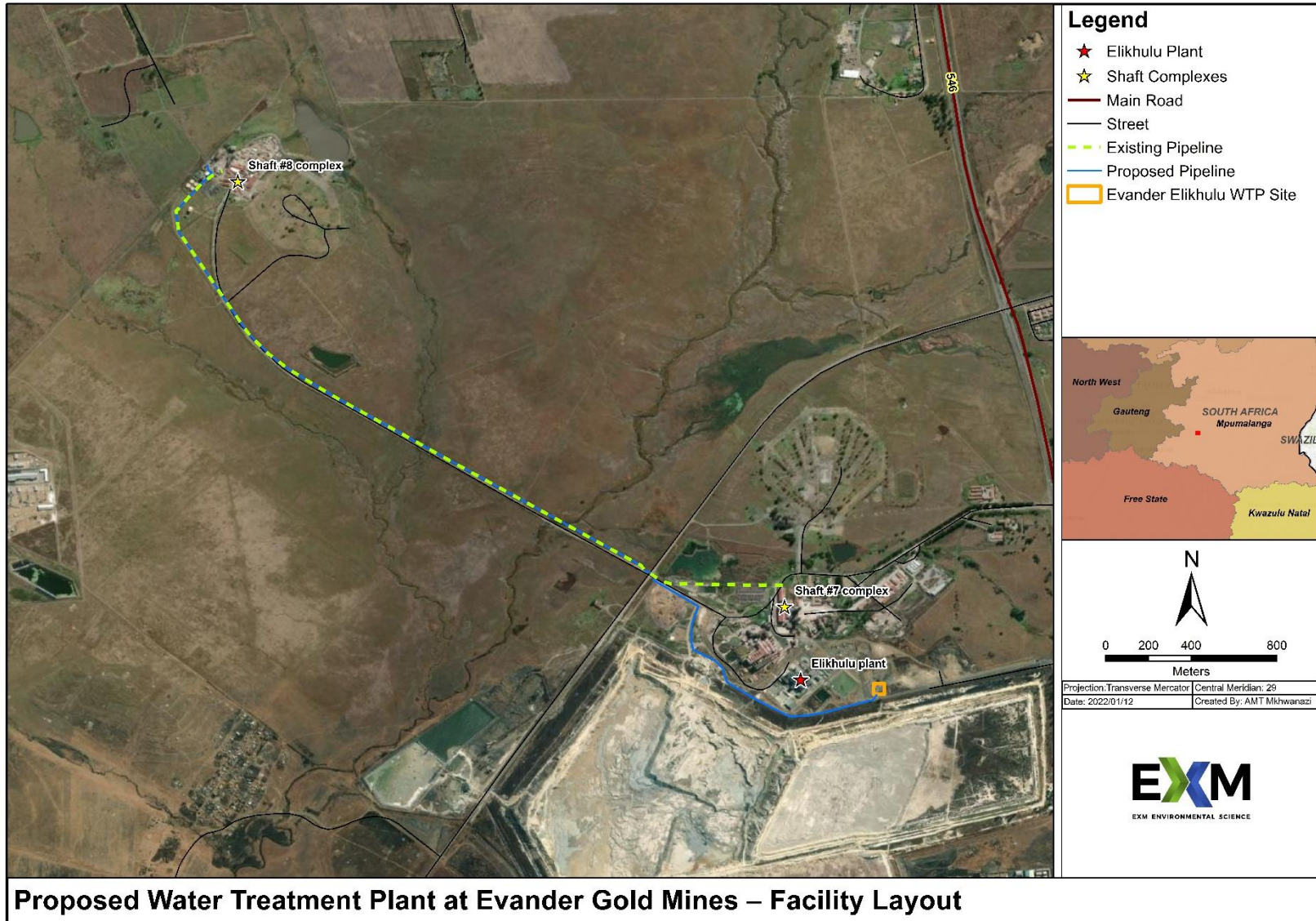


FIGURE 2: INITIAL CONCEPTUAL LAYOUT

3. Environmental Approvals Required

3.13.2 National Environmental Management Act (No. 107 of 1998) (NEMA)

Activities triggered in terms of Listing Notices published in terms of the National Environmental Management Act (No. 107 of 1998) require an Environmental Authorisation (EA) prior to commencement. Activities triggered in Listing Notices 1 (GNR 327) and 3 (GNR 324) require a Basic Environmental Impact Assessment (BA) process to obtain an EA and Activities triggered in Listing Notice 2 (GNR 325) require a full EIA and Scoping process to obtain an EA prior to commencement. The development of the proposed WTP triggers the following activity listed in Listing Notice 1 (GNR 327):

Activity	Description
Activity 25	The development and related operation of facilities or infrastructure for the treatment of effluent, wastewater or sewage with a daily throughput capacity of more than 2 000 cubic metres but less than 15 000 cubic metres.

Therefore, a BA process will be undertaken to obtain an EA for the proposed facility. The regulated timeframes for the completion of the BA process, as provided in the EIA Regulations, are provided in Figure 3 below.



FIGURE 3: Basic Assessment Process

4. Public Participation Process

A public participation process is being undertaken as part of the applications. The process is conducted in terms of the NEMA EIA regulations (GNR. 326 of 2017). Stakeholders are offered the opportunity to be informed about the application, raise comments, issues or concerns and provide input into the application and reports.

Interested & affected parties are invited to participate in the environmental process. You can provide input by:

- Registering as an interested & affected party (IAP);
- Asking questions and raising initial concerns by completing and returning the response sheet (attached); and
- Reviewing and providing comment on reports.

All I&APs will be informed when all the documents will be available for review.

Should you have questions or require more information, **please contact:**

Trevor Hallatt

EXM Advisory Services (Pty) Ltd

Cell: 071 689 2229

Fax: 086 479 4750

Email: trevor@exm.co.za

Postnet Suite 211 Private Bag x0001, Ballito, 4420

Yours sincerely

Trevor Hallatt

Environmental Assessment Practitioner

EXM Advisory Services (Pty) Ltd

