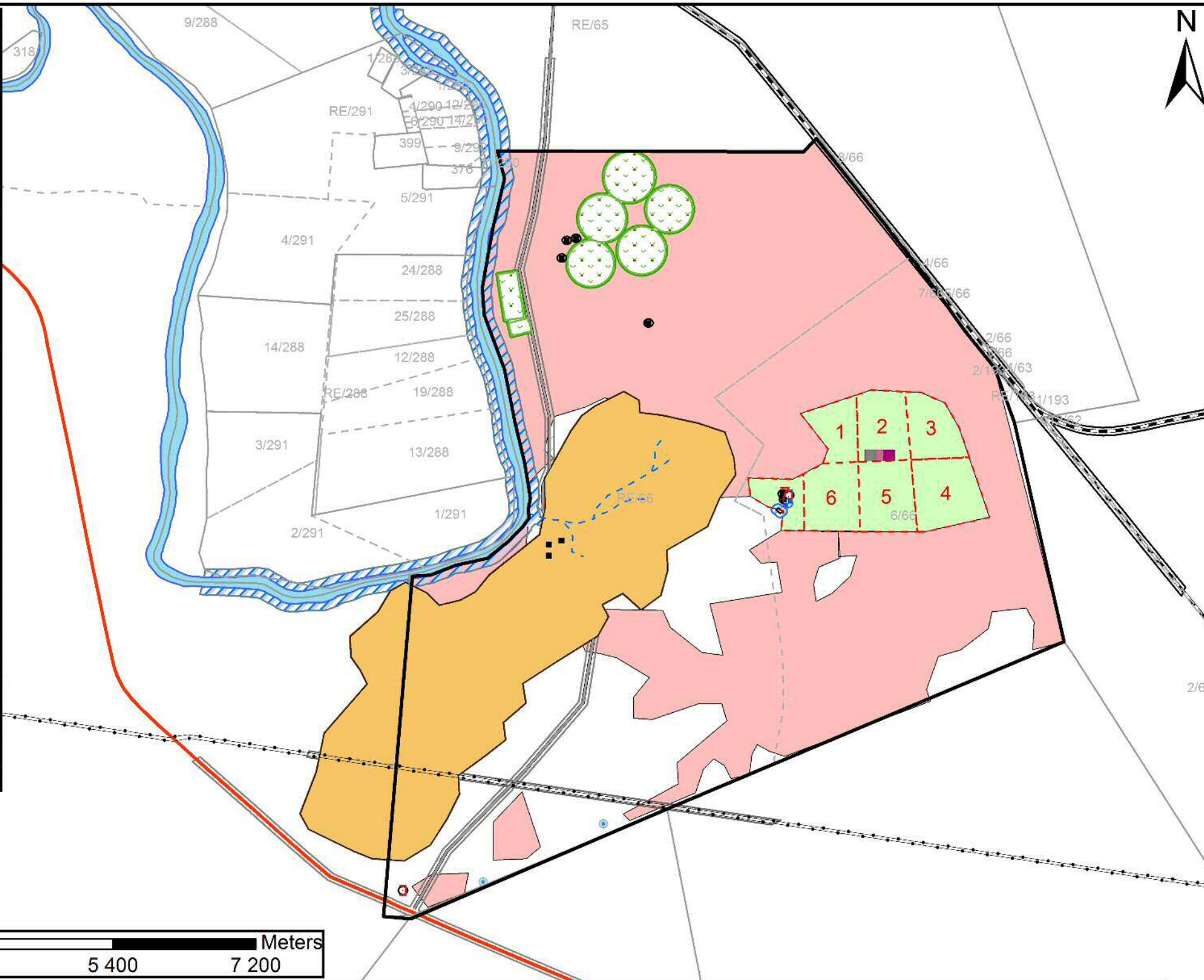


ACTIVITY	FOOTPRINT
Mining	4 618.0225 ha
Excavation	0.25 ha
Topsoil	0.25 ha
Overburden	0.25 ha
Stockpiles	0.125 ha
Waste dumps	0.125 ha
Loading and hauling	
Plant site	
Crushing	
Diamond washing pans	
De watering	0.1 ha
Conveyoir	
Processing plant	
Final diamond recovery	
Water management	
Water supply dams	2.5 ha
Pipeline	
Settling dams	2.3 ha
Office site	0.0072 ha
Ablution facility	0.0032 ha
Vehicle parking	
Parking lot	0.0192 ha
Workshops	0.006 ha
Wash bay	0.01 ha
Parts store room	0.0048 ha
Scrap yard	0.0625 ha
Chemical storage	0.001 ha
Diesel storage	0.005 ha
Domestic waste facility	0.0008 ha
Power lines	
Security points	
Storm water control	
Access road	0.4 ha
Mine roads	



Project Details:

NOOITGEDACHT 66

COMPOSITE PLAN

The Remainder and portion 6 of the farm Nooitgedacht 66

Office reference: LWC 084
Date: 6 September 2017

Applicant:

SUPERMIX MINING (PTY) LTD

Contact Details:

26A Heerengracht Street
Royldene
Kimberley
8301

Tel: 053 831 5839
Cel: 072 767 9461
Fax: 086 690 4778

Client Signature:

Signed: _____

Date: _____

Scale: 1:60 000

Acurate if printed on full A3 size paper

Legend

- | | | | | | |
|-----------------------------|------------------------|-------------------------------|------------------------|-----------------------|-------------------|
| ■ Administrative facilities | ■ Farm dam | ■ Glacial pavement | ■ Phase blocks | ■ R31 Provincial road | ■ 100 m floodline |
| □ Application area | --- Eskom power cables | ■ Irrigation buffer | ■ Plant site | ■ Target Resources | |
| ■ Archaeological buffer | □ Farm boundaries | ■ Irrigation land | --- Public gravel road | ■ Transnet servitude | |
| ■ Buildings buffer | ■ Farm buildings | --- Non-perennial (prominent) | --- Railway | ■ Vaal River | |
| ■ Estimated Resources | - - - Farm Portions | ■ Other structures | ■ Road servitude | ■ Water buffer | |
| ■ Eskom servitude | ■ Glacial buffer | ● Reservoir | ■ Ruins | ● Water borehole | |