

ELECTRICAL SERVICES REPORT

FOR

**PROPOSED TOWNSHIP, SITUATED IN DUMFRIES B ON PORTION 1
OF THE FARM NEWINGTON 255 KU, MPUMALANGA PROVINCE**

JULY 2021, REV 01

PREPARED BY:



Dalimede Projects (PTY) LTD

No. 11 Pierre street, IT Park RentCo
Building, Office 6,
Bendor, Polokwane, South Africa, 0699

Tel: 015 291 0775, Cell: 079 368 8414,

E-mail: admin@dalimede.com

PREPARED FOR:



Nkanivo Development Consultants

456 Rosebud street
Tijger Vallei Ext 20
Pretoria, 0081

Tel: +27 65 919 4732

Cell: +27 83 277 7347

Email: info@nkanivo.co.za / nyiko@nkanivo.co.za

Table of Contents

1. Executive Summary	4
2. Introduction.....	5
3. Development Proposal (Locality)	7
4. Distribution Network Model.....	8
4.1 MV Reticulation	8
5. Distribution Model.....	8
6. Supply Authority (Licensed).....	9
7. Reticulation Design	9
7.1 Method of Supply.....	9
7.2 Design Parameter.....	9
7.3 Estimate Load Demand.	10
7.4 Summary of Predictions for each year	11
7.5 MV Design	11
a) Conductor	12
b) Poles.....	12
c) Stays.....	12
d) Flying Stays.....	12
e) Struts	12
f) Insulators, Line Clamps and Other Line Components, Pole Dressing Hardware etc.....	13
g) Sags and Tensions	13
h) Surge Arrestors.....	13
i) Sectionalizers.....	13
7.6 LV Design	14
7.7 Service connection	14
8. Material and Equipment Specification.....	15
9. Earthing and Lightning Protection System	15
10. Recommendation	16

List of Tables

Table 1 Demographic information 5
Table 2 Estimate Load Demand.....10
Table 3 Design Parameter10
Table 4 Prediction for each year11

List of Figures

Figure 1 Existing MV Feeder line and MV Pole number 6
Figure 2 Locality..... 7
Figure 3 Proposed township development 8
Figure 4 Consumer schematic15

1. Executive Summary

The proposed development township is situated in Dumfries B, on Portion 1 of the farm Newington 255 KU. The area is administrated by Bushbuckridge Local Municipality, under the Ehlanzeni District Municipality. The proposed development township consists of 562 stands. All the stands are not yet electrified. There is an existing MV feeder lines that are supplying the area. The MV line is Hare Conductor.

Thulamahashe Cuningmore 132/22kV feeder is fed from Thulamahashe Substation and the capacity is 10MVA, 132/22kv. There is existing electrical infrastructure around the area.

2. Introduction

This report outlines the design philosophy of the electrical MV and LV installation for the Proposed Development Township. The proposed development township is situated in Dumfries B, on Portion 1 of the farm Newington 255 KU. The installation will be designed to ensure that the installation will comply with the South African national safety standard while meeting the objective of the development.

Table 1 Demographic information

ITEM	DESCRIPTION	COMMENTS
1.	DEMOGRAPHIC INFORMATION	
Town Layout	Number of stands	562
	Stand Density	Medium -10.1 hectare
	Town layout	Relatively Structured
	Classification of layout	Medium Density
Existing Infrastructure	Type of Road	Gravel
	Existence of Telephone Services	None
	Existence of Water Services	None
	Water reticulation	None
	Sewage infrastructure	None
	Others: Clinic	0
	Schools	0
	Churches	0
Businesses	0	
Site Conditions	Soil type	Red turf
	Climate	Temp: -5 to 33°C

ITEM	DESCRIPTION	COMMENTS
	Population	Estimated 9 650 people
2	NETWORK INFORMATION	
2.1	Substation Source	Thulamahashe Substation
2.2	Substation MV transformer capacity	10MVA 132/22KV
2.3	Feeder Name	Thulamahashe Cuningmore 22KV
2.4	MV CONDUCTOR TYRE AND SIZE	HARE

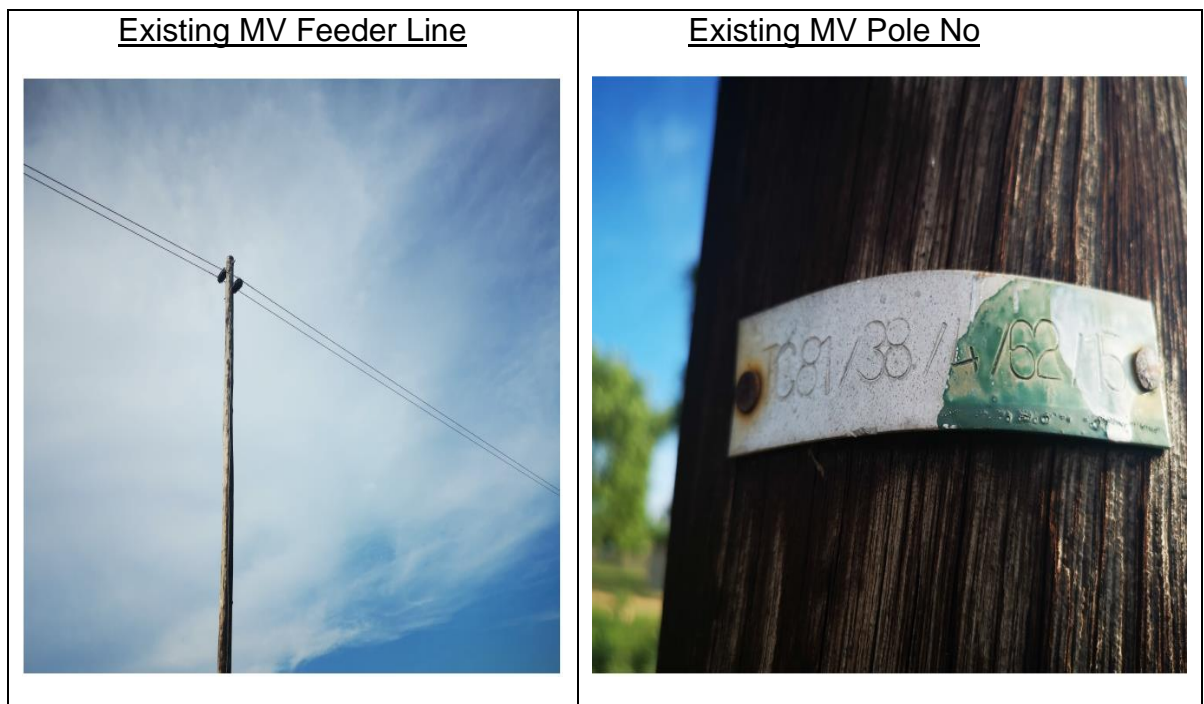


Figure 1 Existing MV Feeder line and MV Pole number

3. Development Proposal (Locality)

The proposed development township is situated in Dumfries B, 38km west of Bushbuckridge is in turn 100km north from Nelspruit the capital of Mpumalanga Province. The area is administrated by Bushbuckridge Local Municipality, under the Ehlanzeni District Municipality. GPS coordinates of site are 24°46'47.44"S 31°19'4.18"E.

The locality map is shown on the figures below.

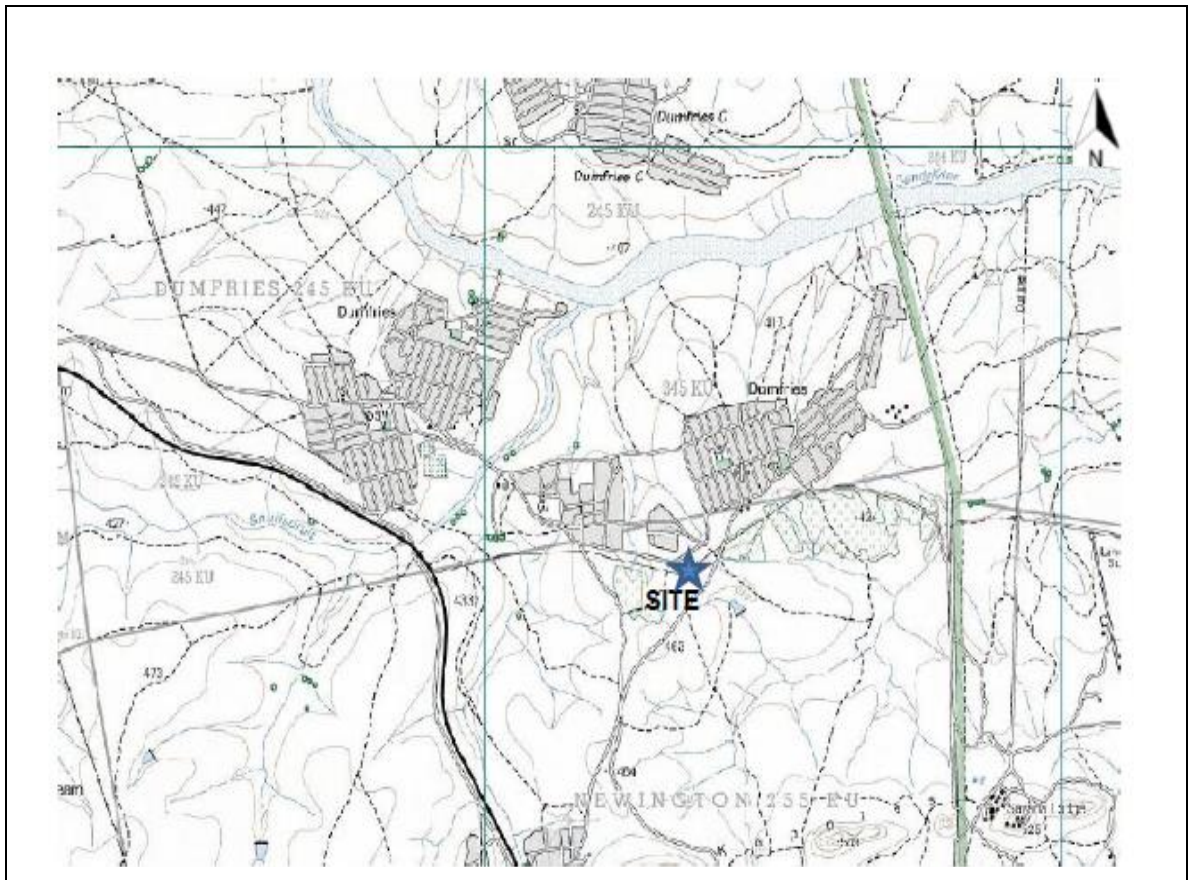


Figure 2 Locality

4. Distribution Network Model

4.1 MV Reticulation

There are existing MV feeder lines that are supplying the area. The MV line is Hare Conductor. Thulamahashe Cuningmore 132/22kV feeder is fed from Thulamahashe Substation and the capacity is 10MVA, 132/22kv. There is existing electrical infrastructure around the area.

5. Distribution Model

The objective of this task is to develop an adequate network model representing the entire Dumfries B Township up to 22kV main feeder level. The main feeder is defined as the main feeder supply from Thulamahashe Substation.

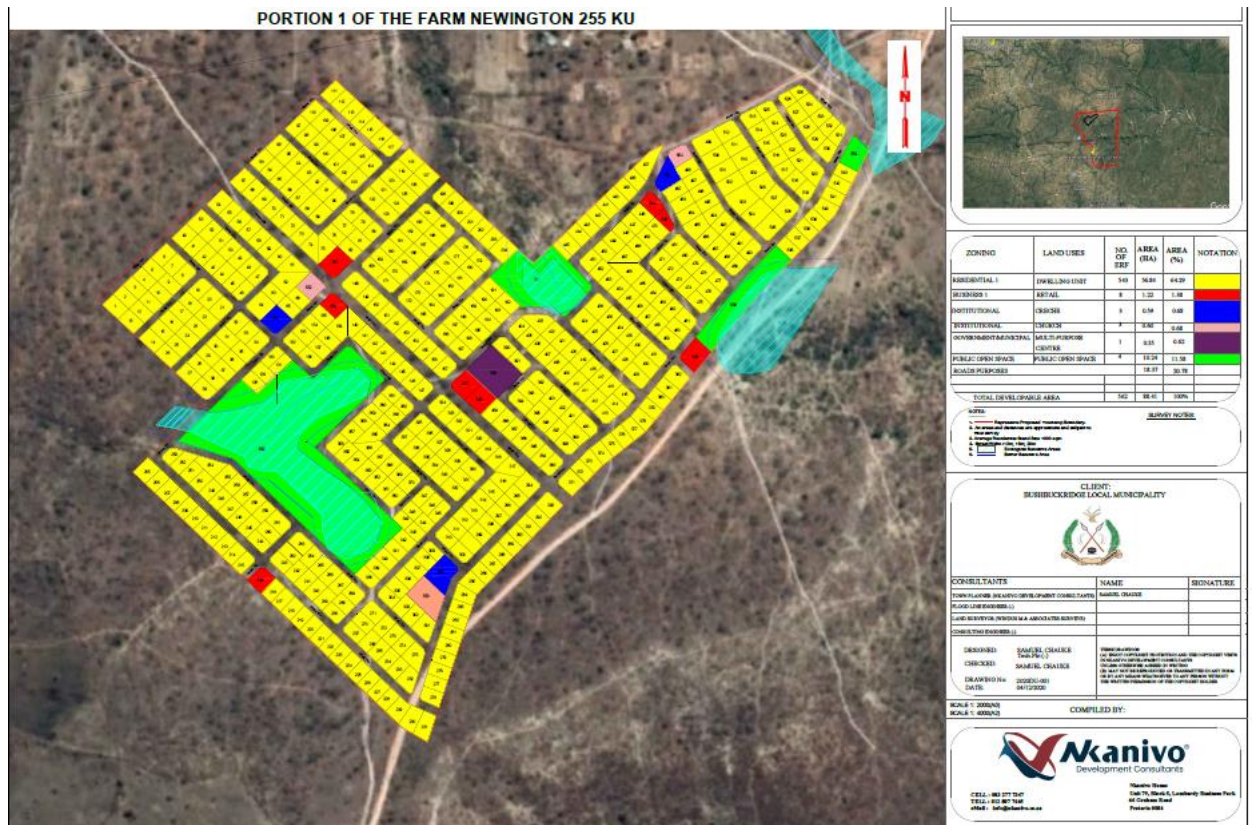


Figure 3 Proposed township development

6. Supply Authority (Licensed)

The area is situated within the electricity licensed area and supply by Eskom.

7. Reticulation Design

7.1 Method of Supply

MV feeder is constructed within the Informal Settlement and they are connected to the distribution transformer. There is an existing MV feeder lines that are supplying the area.

This is to determine the most cost-effective supply arrangement that is used and provide details of required in feed points. The following is included regarding to bulk supply:

- The planning capacity and bulk infrastructure.
- The quality of supply.
- Metering arrangement.
- Protection arrangement.
- The loss profile due to load.

7.2 Design Parameter

The Developer shall erect the MV and LV overhead line reticulation systems in accordance with Eskom's Electrification Standards (Wood Structures).

The internal MV distribution systems shall comprise of "Hare "aluminum conductor steel reinforced configuration on 11m or 9m wooden poles and shall be built to 22kV specifications.

The LV distribution systems shall comprise an aerial bundled conductor (ABC) system, of the supporting core type mounted overhead on either 7 or 9 meter wooden poles. LV distributor spurs shall extend within a radius of approximately 500m from transformer positions depending on individual voltage drop requirements. LV distributor spurs shall share pole structures with the MV system where these follow parallel routes providing clearance of LV can be achieved.

Transformers shall be of the pole mounted type suitably rated to serve anticipated individual LV distributor loads and shall be of the SABS 780 type. All materials supplied by the Developer shall conform to Eskom's Buyer's Guide (Part 9 of DT Standard).

7.3 Estimate Load Demand.

Table 2 Estimate Load Demand

Land Use	No. of Erven	Area (Ha)	No. of Stands	VA / stand	Total
Dwelling Layout	543	56.84	543	1.2	651.6
Retail	18	1.22	18	1.2	21.6
Creche	3	0.59	3	1.2	3.6
Church	3	0.60	3	1.2	3.6
Multi-Purpose Centre	1	0.55	1	1.2	1.2
Public Open Space	4	10.24	4	1.2	4.8
Total Load Demand					686.4

Total Estimate Load Demand is 686.4KVA

The following design parameter is set:

- Medium voltage (Final Design)
 - ADMD 1.2kVA/stand
 - Spare capacity on feeder 0.5kVA/stand
 - Supply voltage 22kV-3 phase
 - Supply regulation(bulk) 100%(assumed)

The projected load for the final phase (at 1.2kVA per stand) is 686.4kVA. The transformer installed capacity is suitable for and can deliver an ADMD of 1.2kVA per stand.

- Low voltage (Final Design)
 - ADMD 1.2kVA/stand
 - Supply voltage 415/240 volt
 - Regulation +- 10%ase
 - Service connection(max) 20Amp

CART Parameters:

Table 3 Design Parameter

ADMD	Alpha	Beta
Initial	0.47	8.91
Final	0.73	7.48

7.4 Summary of Predictions for each year

Table 4 Prediction for each year

Year	Energy [kWh]	IADMD [kVA]		beta	Circuit
1	150.70	0.69	0.47	8.91	20.00
2	160.63	0.73	0.49	8.75	20.00
3	170.57	0.76	0.50	8.61	20.00
4	180.50	0.80	0.52	8.49	20.00
5	190.44	0.84	0.54	8.36	20.00
6	200.38	0.88	0.56	8.24	20.00
7	210.31	0.92	0.58	8.14	20.00
8	220.25	0.96	0.60	8.05	20.00
9	230.18	0.99	0.62	7.95	20.00
10	241.78	1.04	0.64	7.85	20.00
11	251.71	1.08	0.66	7.77	20.00
12	261.65	1.12	0.68	7.69	20.00
13	271.58	1.16	0.70	7.62	20.00
14	281.52	1.20	0.72	7.55	20.00
15	291.46	1.23	0.73	7.48	20.00

7.5 MV Design

The existing and proposed medium-voltage network is best described in terms of both geographic layout and electrical connection layout. The performance of the network is quantified by MV load flow studies, based on the loads described in the load forecast.

Medium Voltage supply consists of three phase mink conductor. The conductor shall be mounted on 9m wood poles and shall run street-front. A 780 pole mounted transformer shall be used to supply the stands. The transformer must not be loaded more than 108%.

All MV structures shall be constructed in accordance with Eskom Medium Voltage Distribution Standard and specifications.

The MV overhead feeder system shall comply with the requirements of ESKOM's Distribution Technology, Electrification Standards and Guidelines as and where applicable for an urban concrete pole reticulation system.

a) Conductor

Type	:	Aluminium conductor steel reinforced.
Code Name	:	Hare/Fox-see Bill of Quantities/drawings
Mass	:	85kg/km / 149kg/km
Ultimate tensile strength	:	7 900 / 13 200 Newton
Max working tension	:	@ -5oC + wind 5 240 / 8760 Newton.
Mounting	:	See structure codes on drawings.

The maximum working tension may be exceeded only during the construction stages when the conductors are to be "over-tensioned" to 1.05 x MWT for a period of not less than 8 hours nor longer than 24 hours after which the tension is to be reduced to a figure not to exceed the stated maximum working tension of the conductor concerned.

b) Poles

Pole type	-	Wood
Pole lengths	-	7m for LV distributor 9m for LV road crossing, 11m for MV Line
Planting depth	-	1.5, 1.8 and 2m respectively
Pole marker	-	painted - black on yellow background.

c) Stays

Type	-	Fiber glass for MV and Porcelain of LV
Rods	-	M20 - 2000 long
Base plate	-	380 x 380 x 6 galvanized
Stay wire	-	7/4mm, 1100 MPA - galvanized
Planting depth	-	2m

d) Flying Stays

Flying stays shall be installed in the positions indicated on the drawings by the structure codes. Anchor poles shall be as specified for the line structures and of sufficient length to ensure the required ground clearance. Overhead stay wire shall be 7/4.00mm as specified for stays.

e) Struts

Struts shall be installed in the positions indicated on the drawings by the

structure codes. Strut poles shall be as specified for the line structures. Line structure poles shall be fitted with suitable ground anchors at all strut positions. Struts shall be fitted with barbed wire anti climbing devices.

f) Insulators, Line Clamps and Other Line Components, Pole Dressing Hardware etc.

All in accordance with Eskom's Distribution Reticulation Technology, Electrification Standards and Guidelines with particular reference to the detailed material take off sheets provided for the various line structures.

g) Sags and Tensions

The Developer shall provide suitable dynamometer sighting rods or other approved apparatus necessary for proper checking of the work. Dynamometers shall be calibrated in kg or kN.

h) Surge Arrestors

Surge arrestors shall be of the metal oxide outdoor hermetically sealed, vertical base mounted type, rated at 11kV, 10kA impulse current.

i) Sectionalizers

Dropout fuses shall be provided for each transformer zone.

7.5.1 Pole Mounted Transformers

Transformers shall generally comply with the following details:

Situation	:	Outdoors
Mounting outline)	:	Suitable for single pole structure (Transformer
Type	:	SABS 780
kVA rating	:	100/50 (as indicated on drawings)
No load voltage ratio	:	11000/415/231 volt
Vector group	:	Dyn 11
Parallel operation	:	Not required
MV & LV connections	:	External bushings with suitable insulated connections.

The transformers shall have connected on the MV side through the use of links or fuses.

7.6 LV Design

The low voltage feeders shall be three phase 4 core aerial bundle conductor with bare neutral and shall be 70 and 35mm². The LV network is to be constructed in mid-block layout on 7m wood poles. The feeders shall be fused at the transformer pole. All LV structures shall be constructed in accordance with Eskom Low Voltage Distribution Standard and specifications.

7.7 Service connection

The majority of customers are expected to purchase a 20 Amp supply. Service connections are to be made with a 10mm² concentric cables from a 4-way and 8-way distribution pole top boxes. The service connection shall be a concentric cable in accordance with SCSSCAAC7. For a 60A supply a 10mm² concentric cables shall be used. The concentric cable used on all new services shall be installed without joints from the pole-top distribution box into the standard passive unit base, which is mounted in the customer's premises.

Where the concentric cable enters the dwelling, suitable protection shall be applied around the cable to prevent damage to the insulation. The concentric cable shall form a "drip loop" before the attachment or entry point on the customer's wall as illustrated in drawings D-DT-0360 and D-DT-0361. The concentric cable entry point into the SPU shall be watertight.

The SPU consists of a standard dispenser socket (ED base) attached to a standard 110 mm x 110 mm socket outlet box as illustrated in D-DT-0347. The SPU shall be installed in every customer's home regardless of the type of supply required. For customers with a 60A supply the standard 110mm X 110mm socket outlet box shall be removed from the SPU. The SPU shall comply with SCSSCAAJ1.

The SPU integrates the incoming service cable with the metering, protection and household distribution. It provides the separation of the earth and neutral for the customer's installation. The wiring between the standard dispenser terminals and the socket outlet box is part of the customer's installation. The wiring shall be done with a separate earth and neutral wire.

The SPU shall be mounted at a position that is suitable for the customer and away from sources of heat and moisture. Refer to 7.9 in SABS 0142 for the positioning of distribution boards. On brick walls, a 6mm diameter "easy-drive" with screw (D-DT-3149) will be used to mount the SPU. In all other cases, a threaded rod with washers shall be used. A non-metallic cable gland (D-DT-3070) will be provided at the service cable entry point to the standard passive unit.

All services shall be in accordance with Eskom Distribution Services Standard and specifications.

8. Material and Equipment Specification.

The Developer will erect the MV and LV overhead line reticulation systems in accordance with Eskom's Electrification Standards (Wood Structures). The internal MV distribution systems shall comprise of "Mink" aluminum conductor steel reinforced configuration on 12m, 11m or 9m wooden poles and shall be built to 11kV specifications.

The LV distribution systems shall comprise an aerial bundled conductor (ABC) system, of the supporting core type mounted overhead on either 7 or 9 meter wooden poles. LV distributor spurs shall extend within a radius of approximately 500m from transformer positions depending on individual voltage drop requirements. LV distributor spurs shall share pole structures with the MV system where these follow parallel routes providing clearance of LV can be achieved.

Transformers shall be of the pole mounted type suitably rated to serve anticipated individual LV distributor loads and shall be of the SABS 780 type. All materials supplied by the Developer shall conform to Eskom's Buyer's Guide (Part 9 of DT Standard).

9. Earthing and Lightning Protection System

In accordance with Eskom Distribution Standard Part 2, with particular reference to:

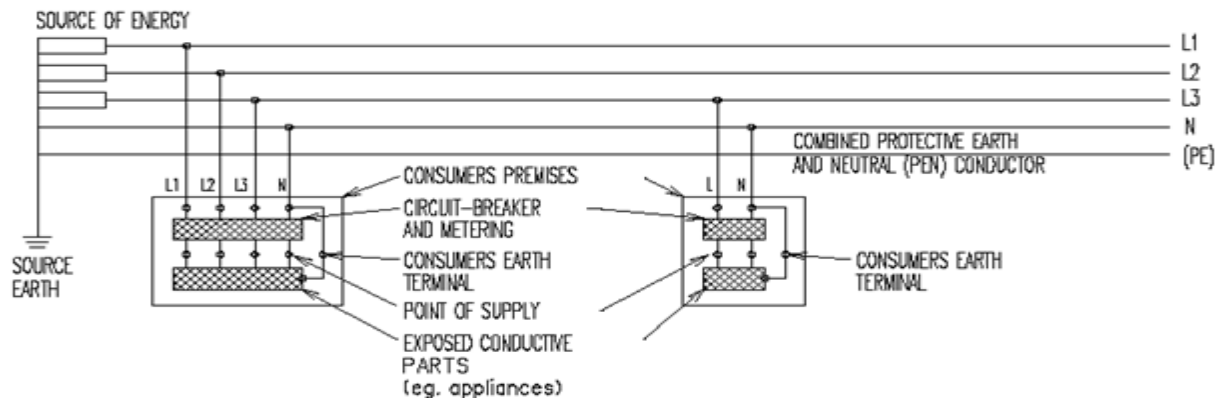


Figure 4 Consumer schematic

Results of soil resistivity survey at 2 points.
Min Cu area : 16mm² stranded
12mm² solid

- Low Voltage
22 kV systems : 70 Ohms
- Medium Voltage
22kV system : 30 Ohms

10. Recommendation

MV feeder network that supply the area is Thulamahashe Cuningmore 132/22kV and Substation name is Thulamahashe Substation. The capacity is 10MVA, 132/22kV. The area is administrated by Bushbuckridge Local Municipality, under the Ehlanzeni District Municipality. The proposed development township consists of 562 stands. All the stands are not yet electrified. There is an existing MV feeder lines that are supplying the area. The MV line is Hare Conductor. It is recommended that the development can be connected according to Eskom Distribution Standard.