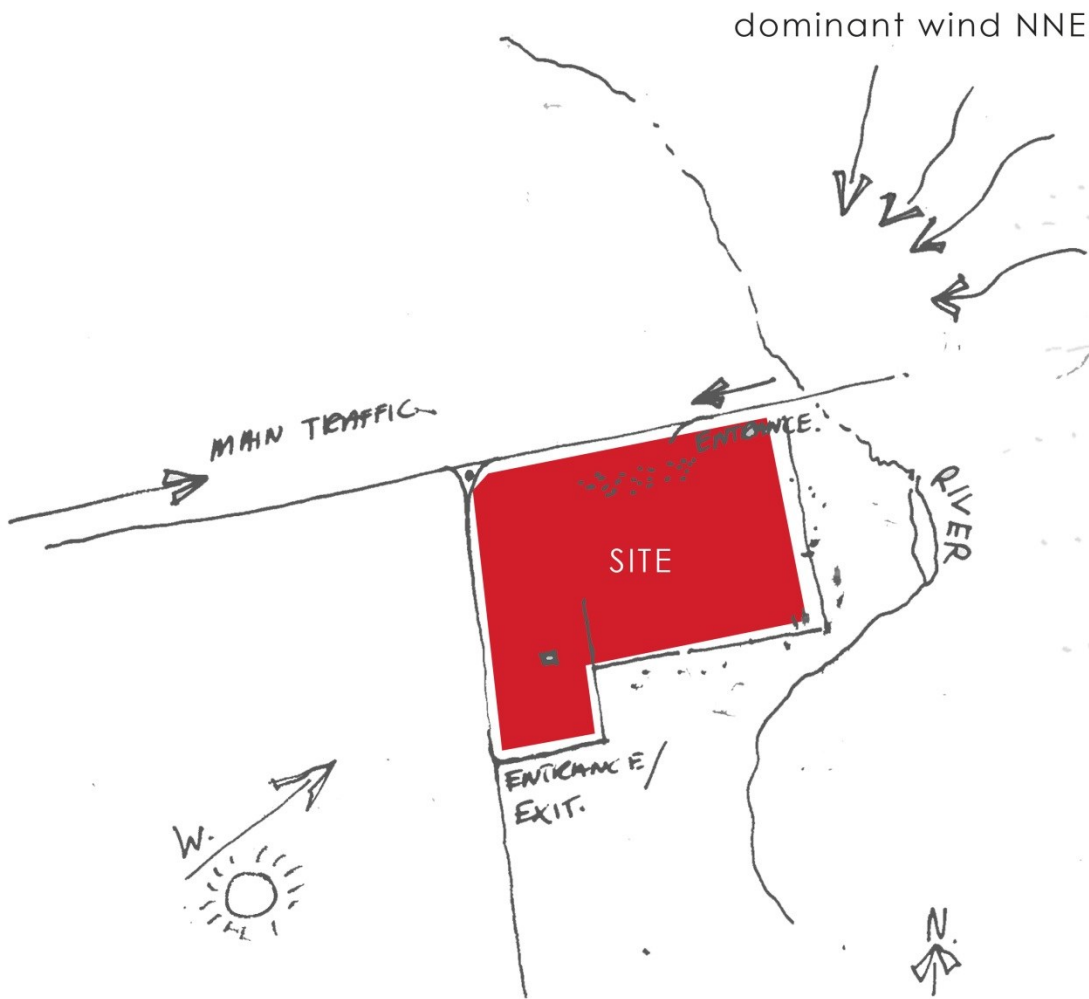


✓ LAKFONTEIN DEVELOPMENT CONCEPT

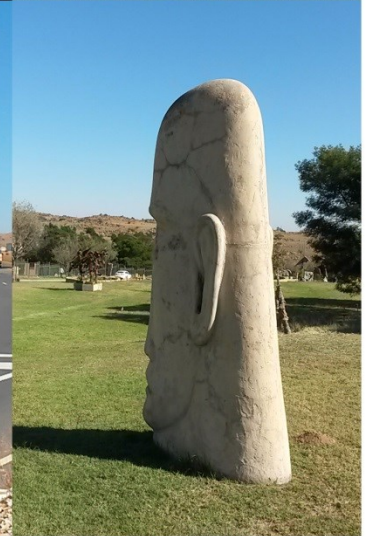




The **site** is situated in a **sculptural context** - both natural (hills and river) and man made (Anton Smit) Therefore, these elements informed and inspired the Architectural language...

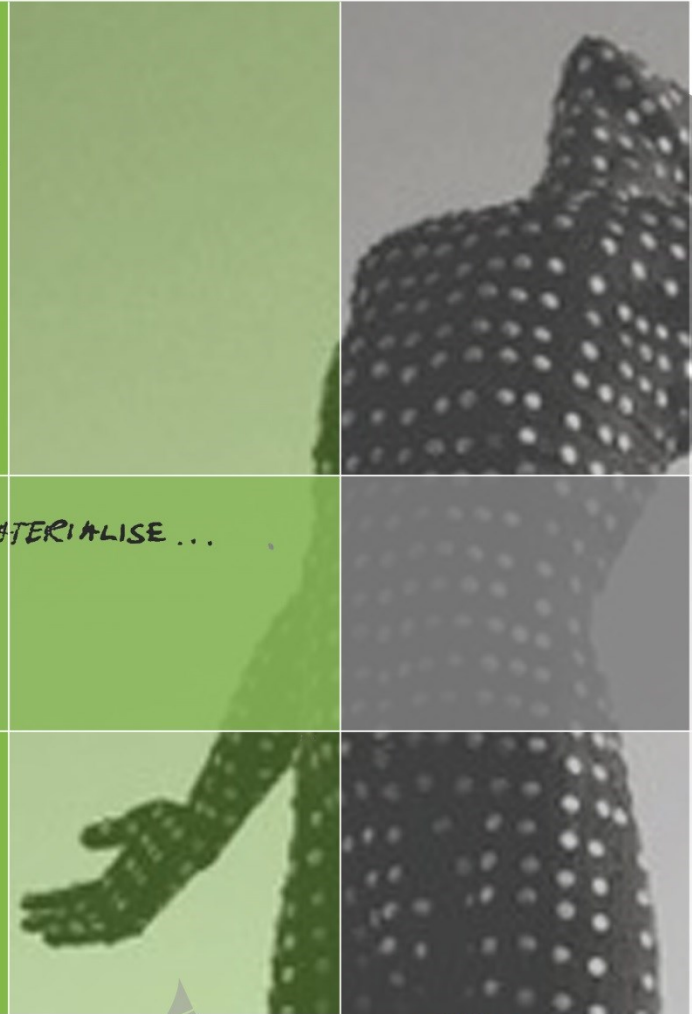
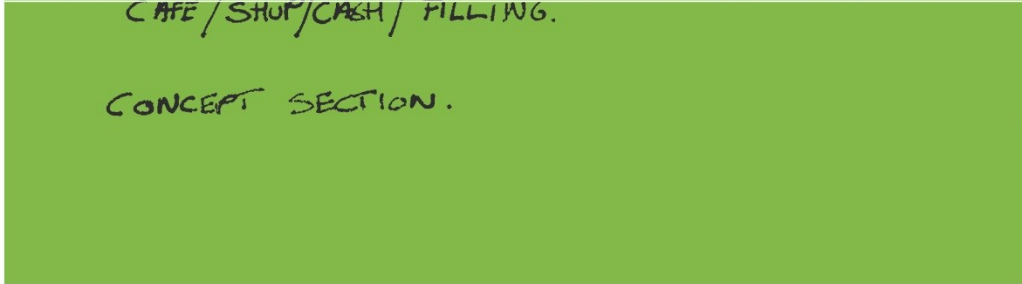
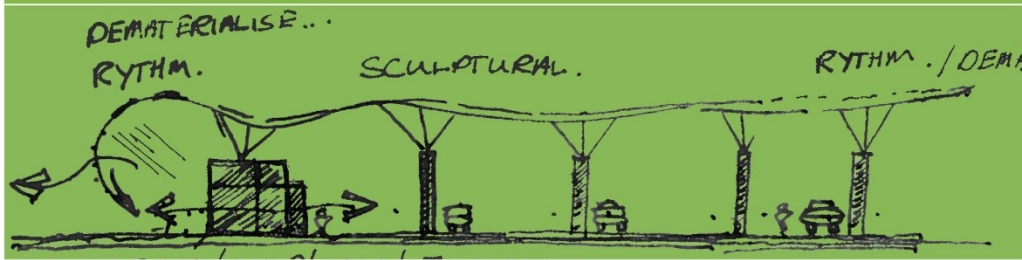
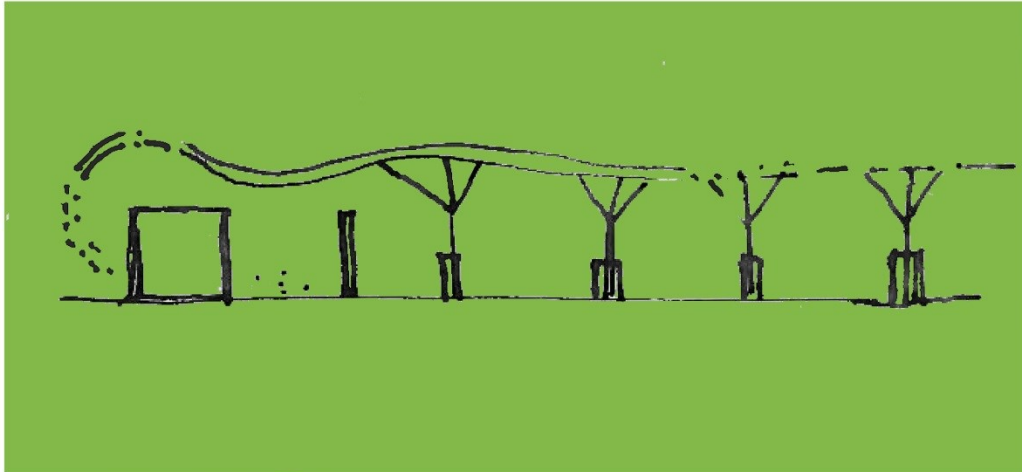


CONTEXT
CONTEXT
CONTEXT



VLAKFONTEIN DEVELOPMENT CONCEPT





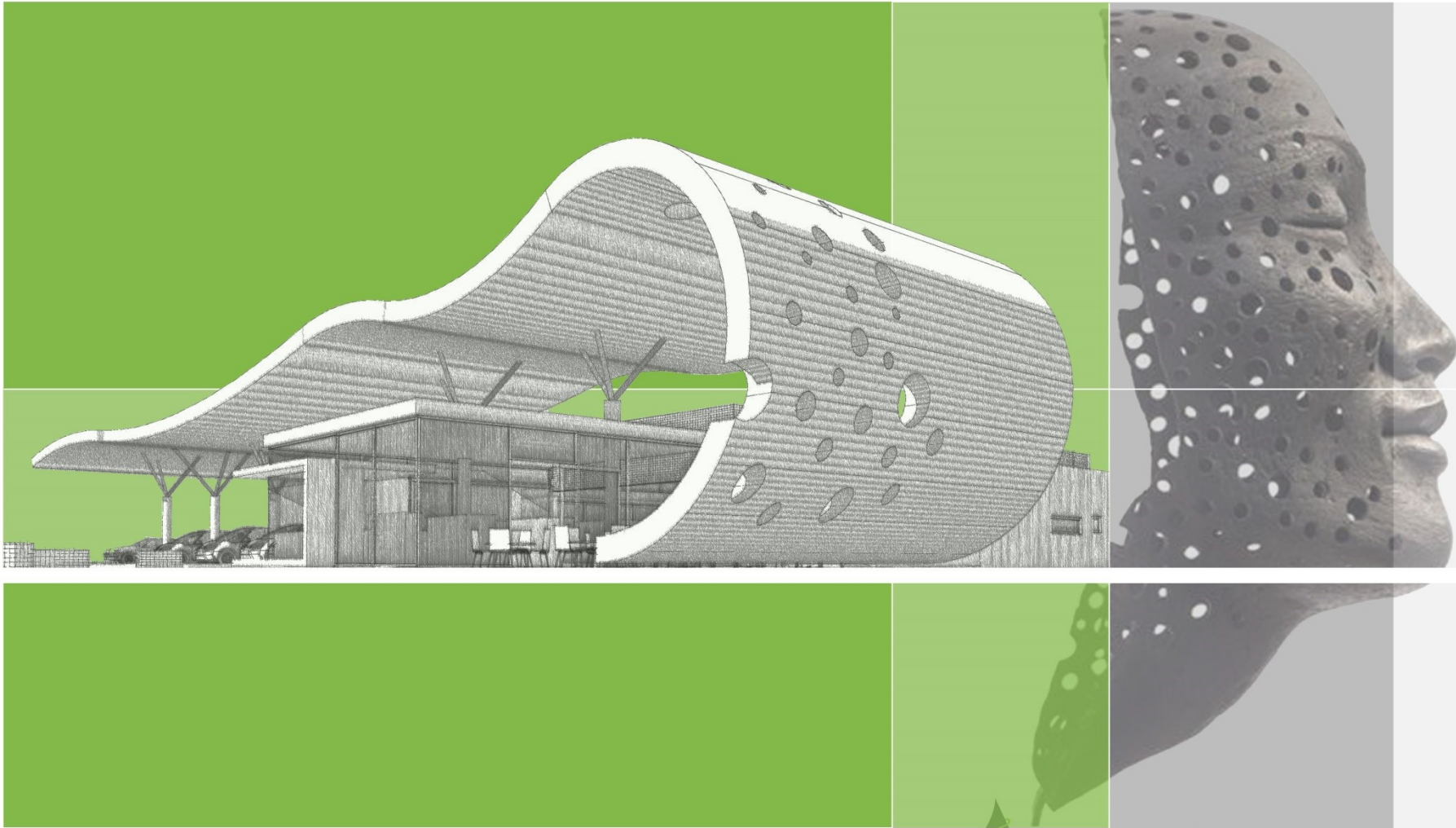
VLAKFONTEIN DEVELOPMENT CONCEPT





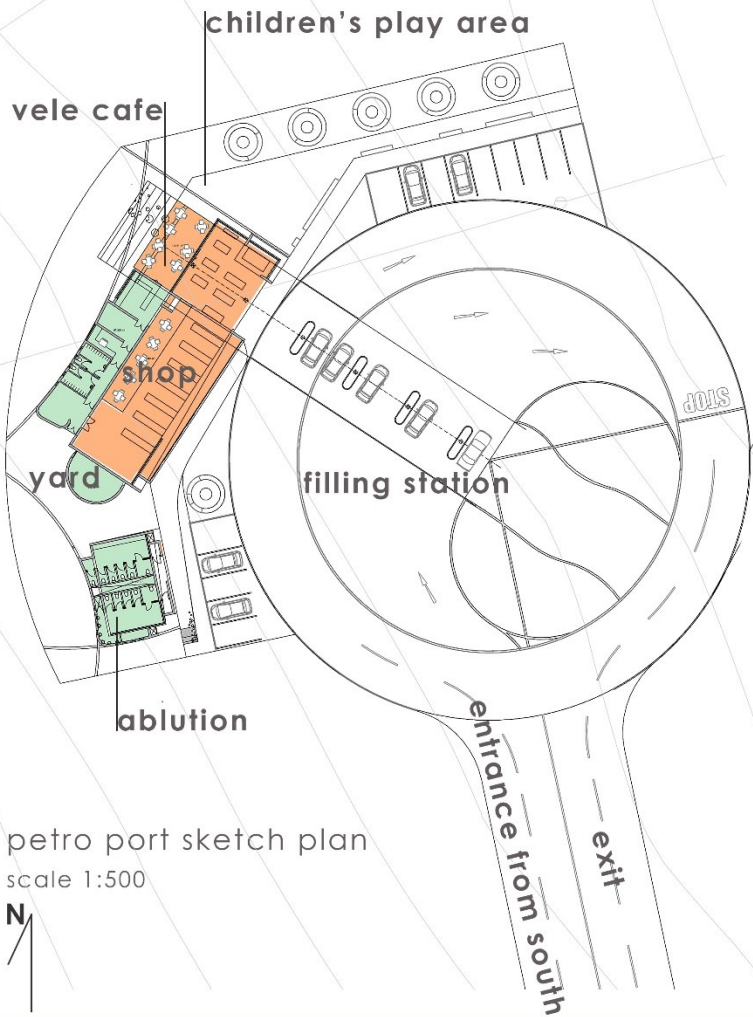
VLAKFONTEIN DEVELOPMENT CONCEPT





VLAKFONTEIN DEVELOPMENT CONCEPT



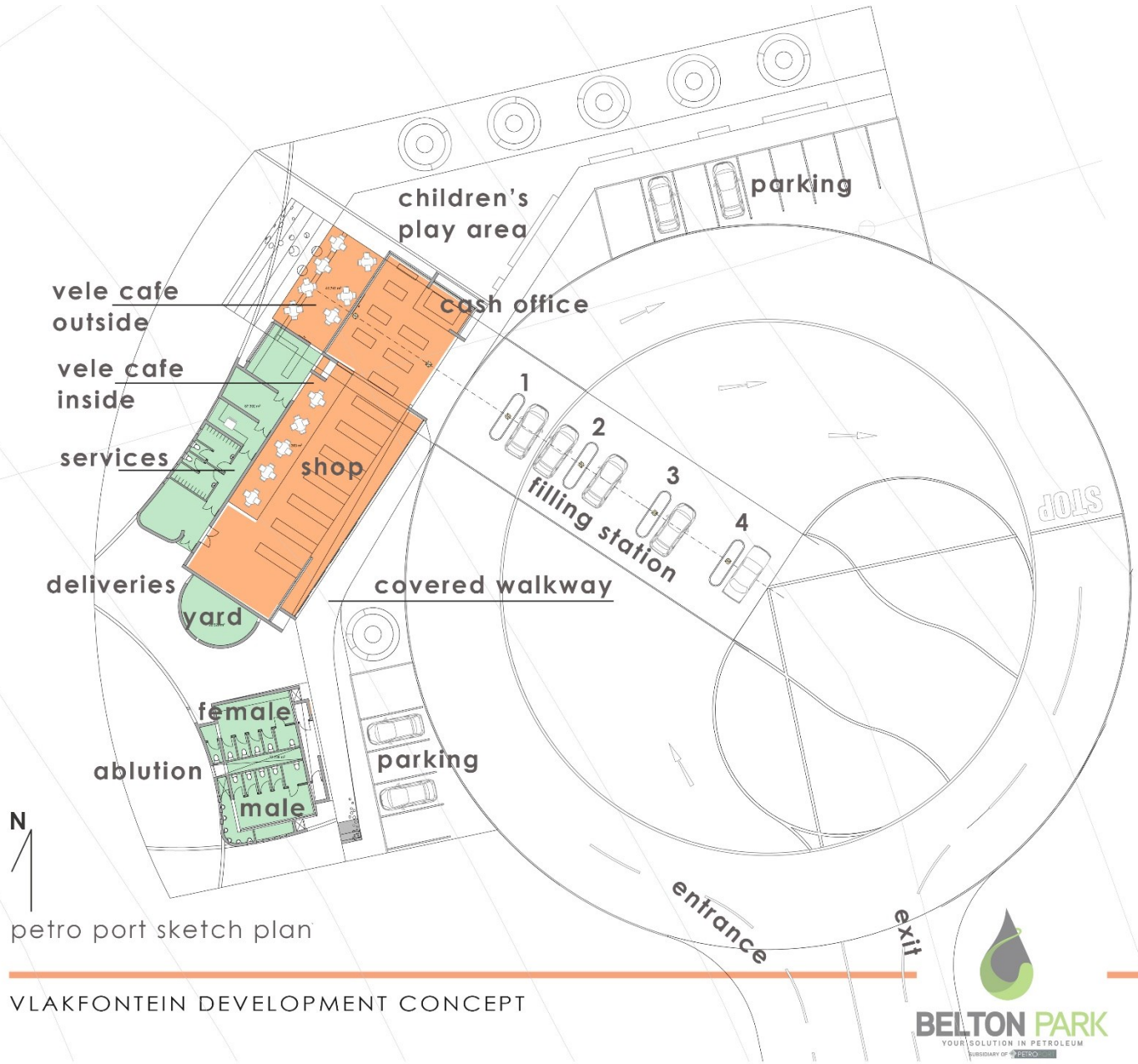


petro port sketch plan
scale 1:500



VLAKFONTEIN DEVELOPMENT CONCEPT

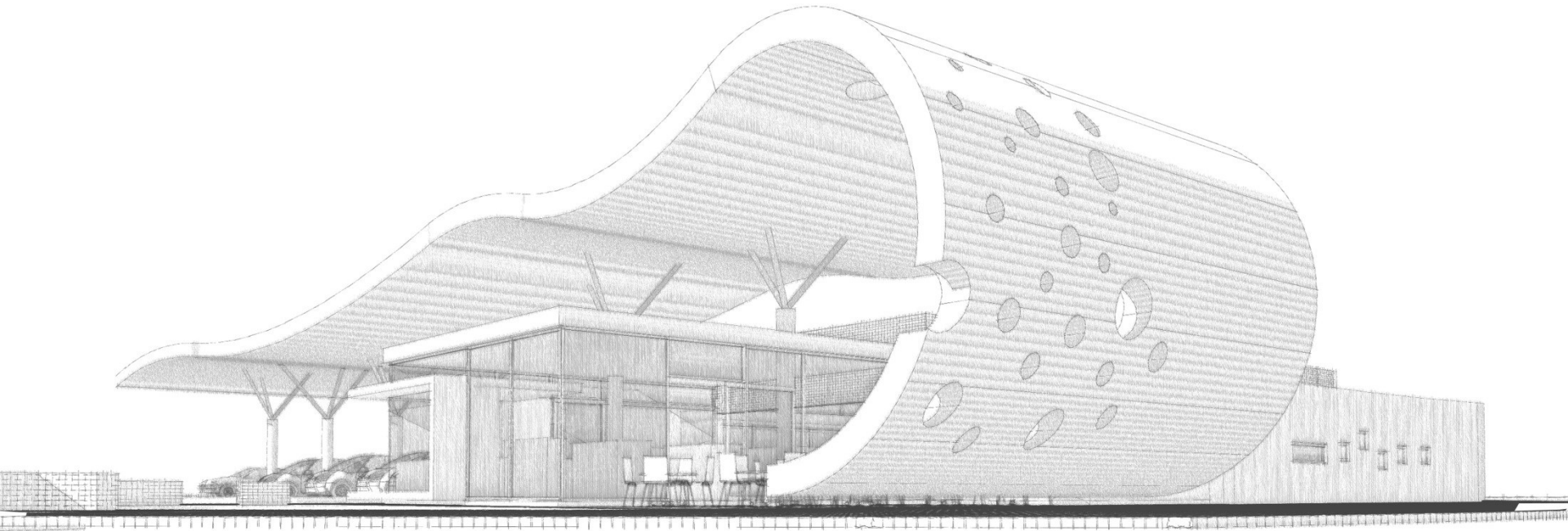




petro port sketch plan

VLAKFONTEIN DEVELOPMENT CONCEPT





view from the north - west

VLAKFONTEIN DEVELOPMENT CONCEPT





view from the north west

VLAKFONTEIN DEVELOPMENT CONCEPT





view from the north

VLAKFONTEIN DEVELOPMENT CONCEPT





view from the west

VLAKFONTEIN DEVELOPMENT CONCEPT





truck stop

VLAKFONTEIN DEVELOPMENT CONCEPT

