

## **APPENDIX A: MAPS**

**Figure 1: Section 2(2) Plan**

**Figure 2: Regional Locality**

**Figure 3: Existing roads / tracks and preliminary locations of proposed drill holes (Phase 4)**

**Figure 4: Regional Geology**

**Figure 5: Vegetation Units present on site according to VEGMAP (Mucina & Rutherford, 2006)**

**Figure 6: Vegetation Map**

**Figure 7: Environmental Sensitivity Map**

**Figure 8: Critical Biodiversity Areas (CBAs) in the Namakwa District Municipality. Note the presence of CBA1 north of Aggeneys, with CBA2 in the vicinity, while an Ecological Support Area (ESA) forms a corridor south of Aggeneys (Namakwa District Biodiversity Sector Plan, 2008)**

**Figure 9: Identified Biodiversity Priority Areas and associated risk to planned mining / prospecting activities in terms of the Mining and Biodiversity Guideline (MBG), 2012 and the Namakwa District Biodiversity Sector Plan, 2008**

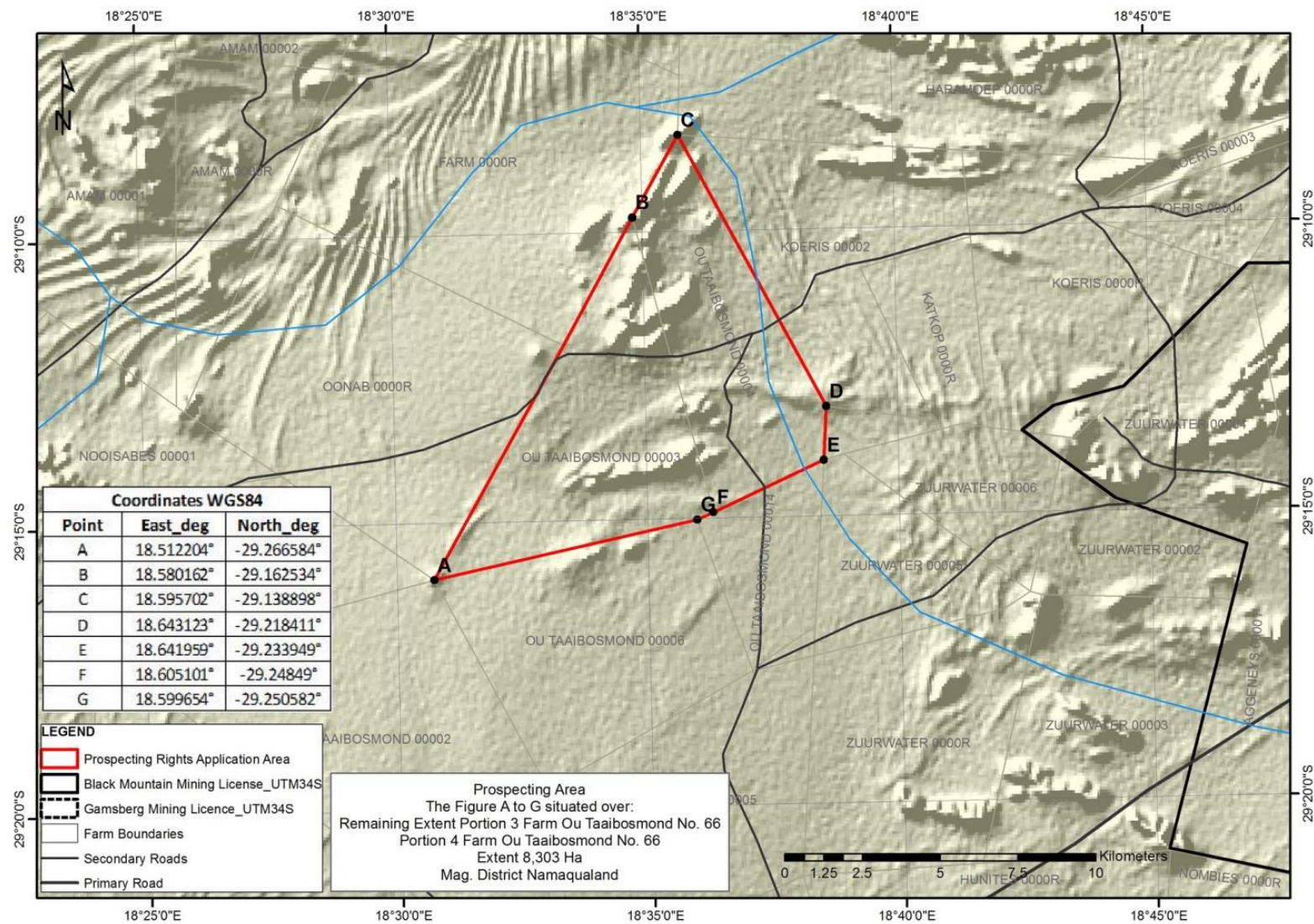


Figure 1: Section 2(2) Plan

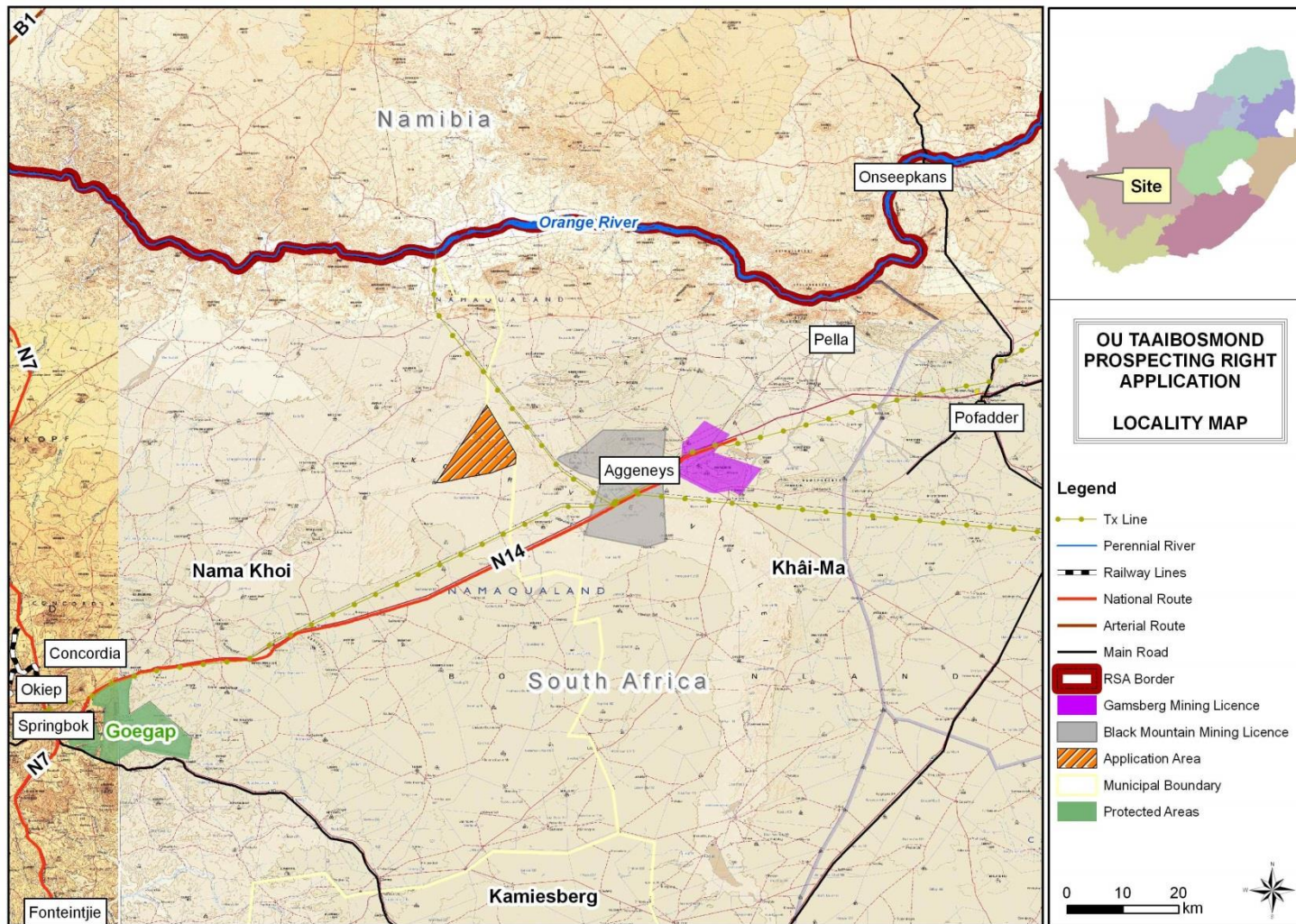


Figure 2: Regional Locality

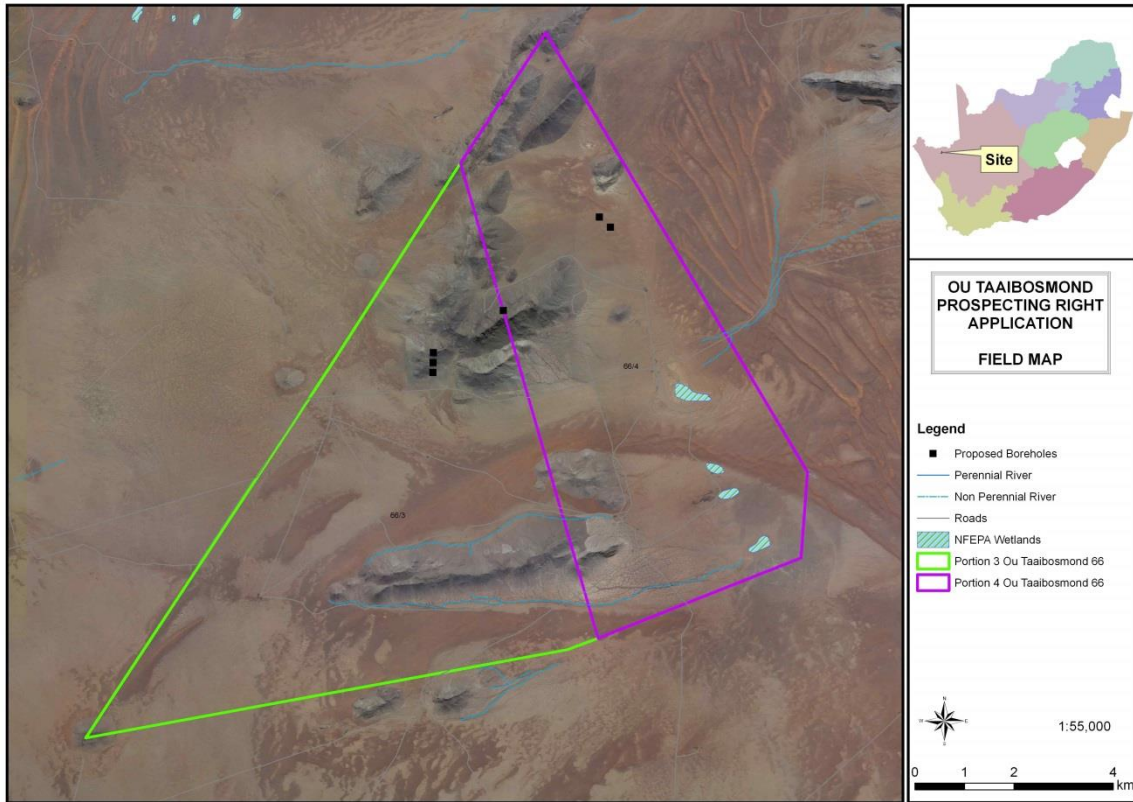


Figure 3: Existing roads / tracks and preliminary locations of proposed drill holes (Phase 4)

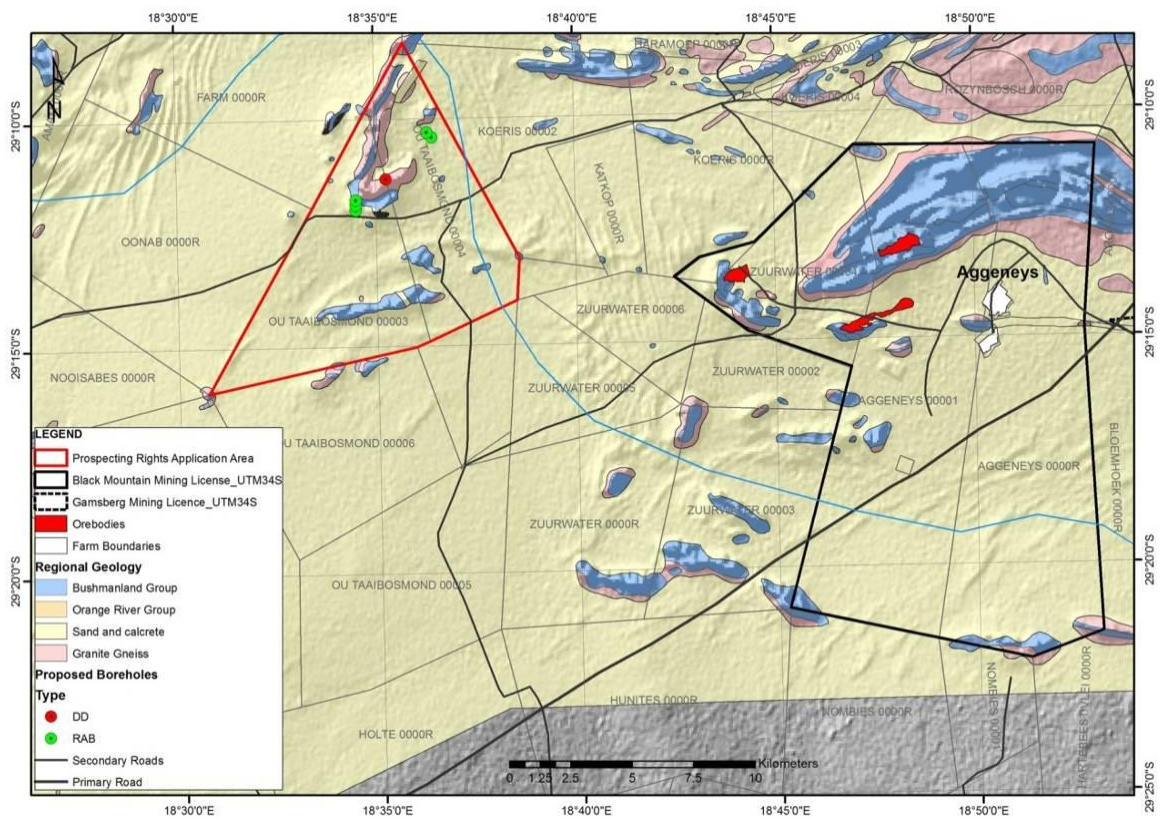


Figure 4: Regional geology

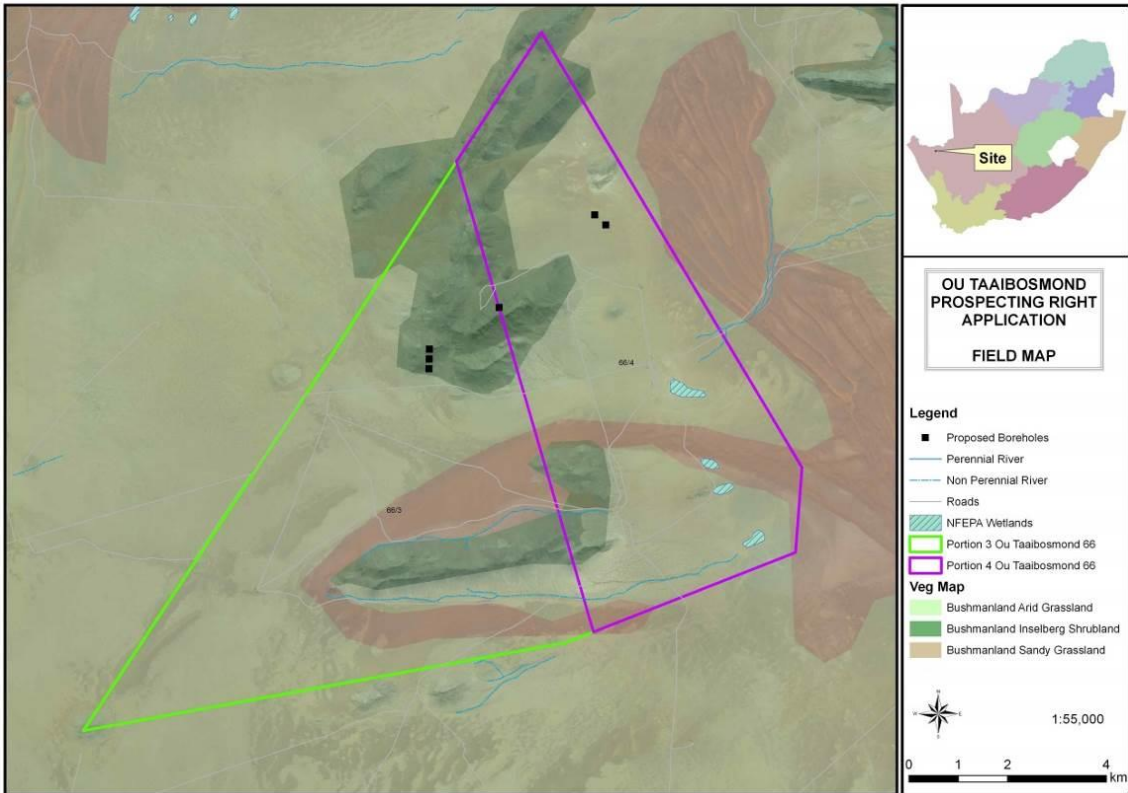


Figure 5: Vegetation Units present on site according to VEGMAP (Mucina & Rutherford, 2006)

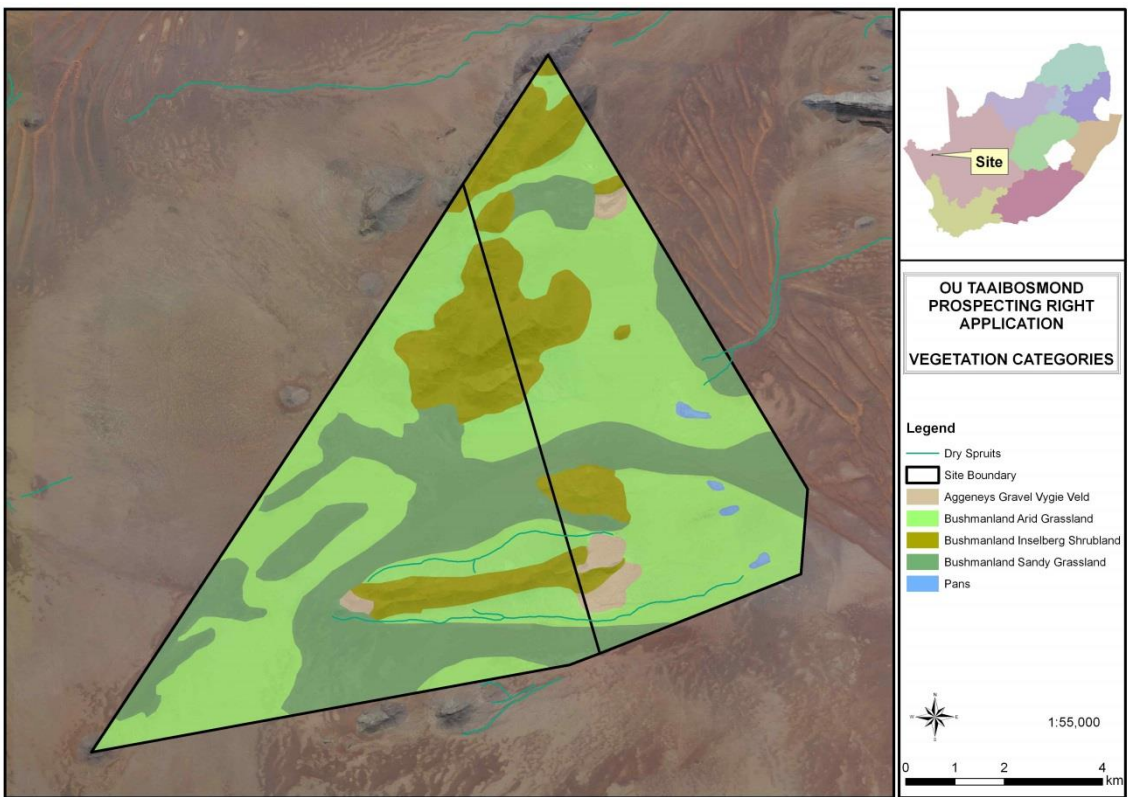


Figure 6: Vegetation Map

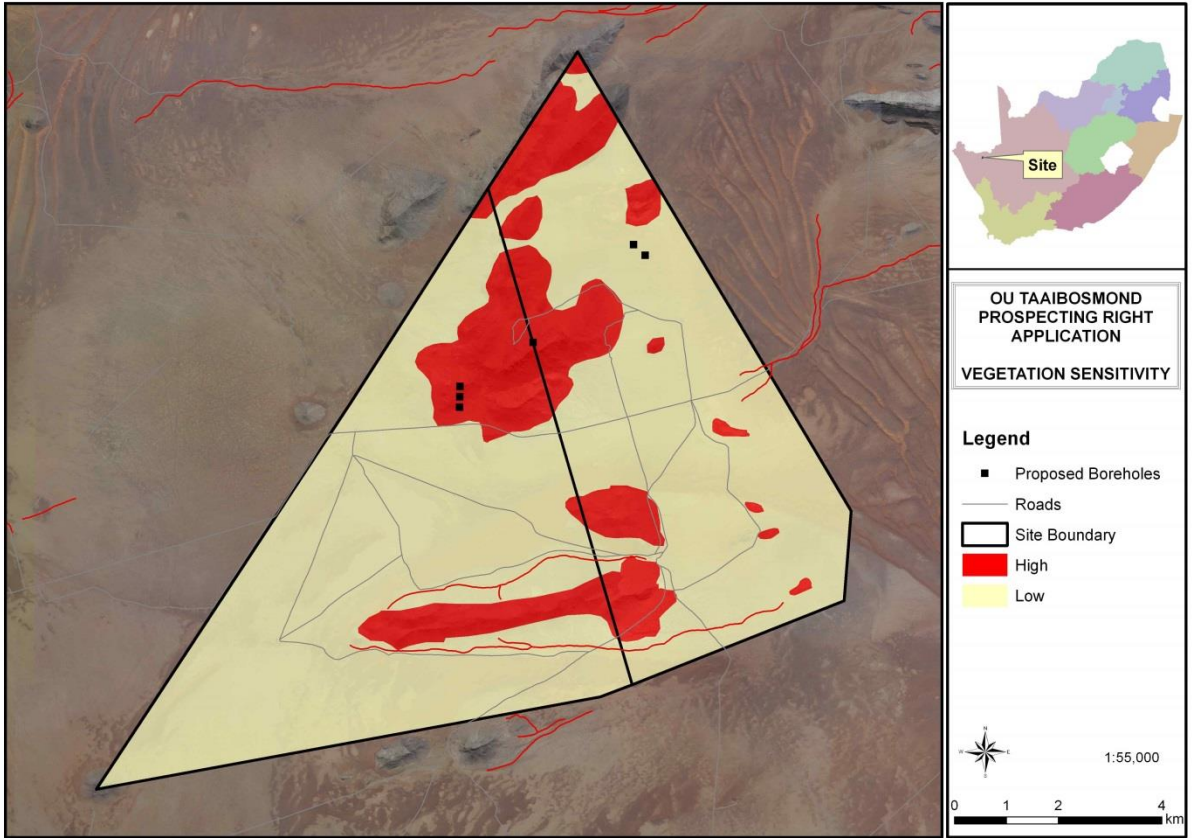


Figure 7: Environmental Sensitivity Map

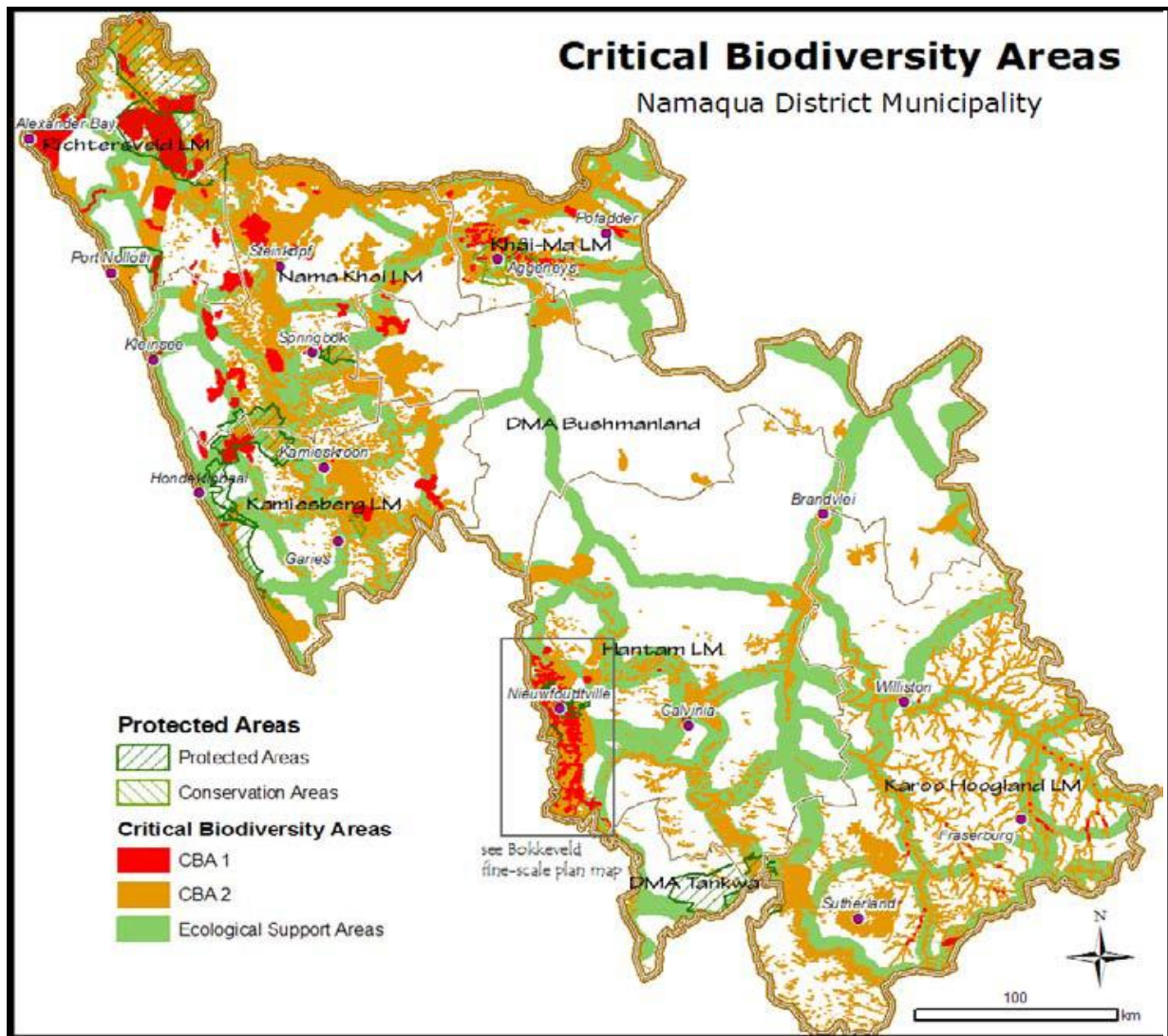
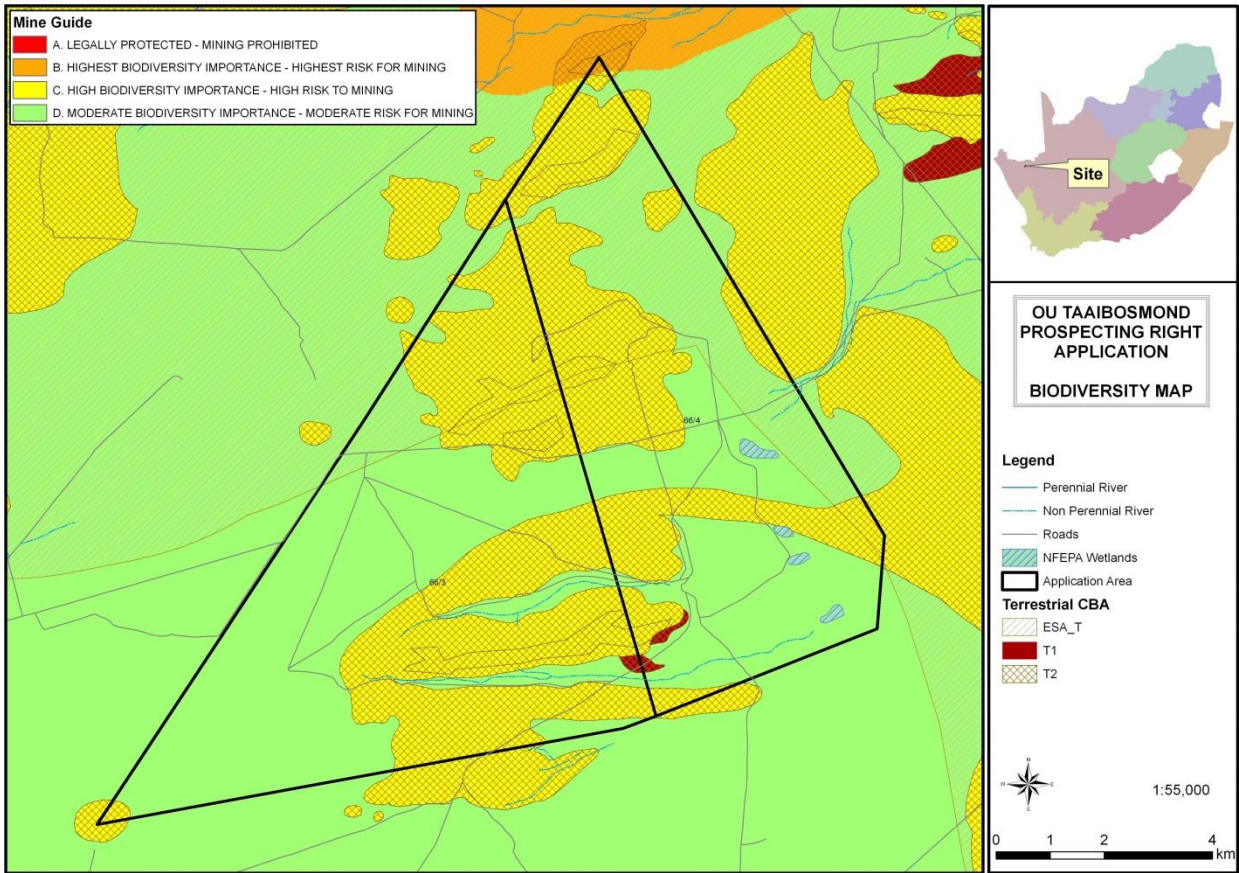


Figure 8: Critical Biodiversity Areas (CBAs) in the Namaqua District Municipality. Note the presence of CBA1 north of Aggeneys, with CBA2 in the vicinity, while an Ecological Support Area (ESA) forms a corridor south of Aggeneys (Namaqua District Biodiversity Sector Plan, 2008)



**Figure 9: Identified Biodiversity Priority Areas and associated risk to planned mining / prospecting activities in terms of the Mining and Biodiversity Guideline (MBG), 2012 and the Namakwa District Biodiversity Sector Plan, 2008**