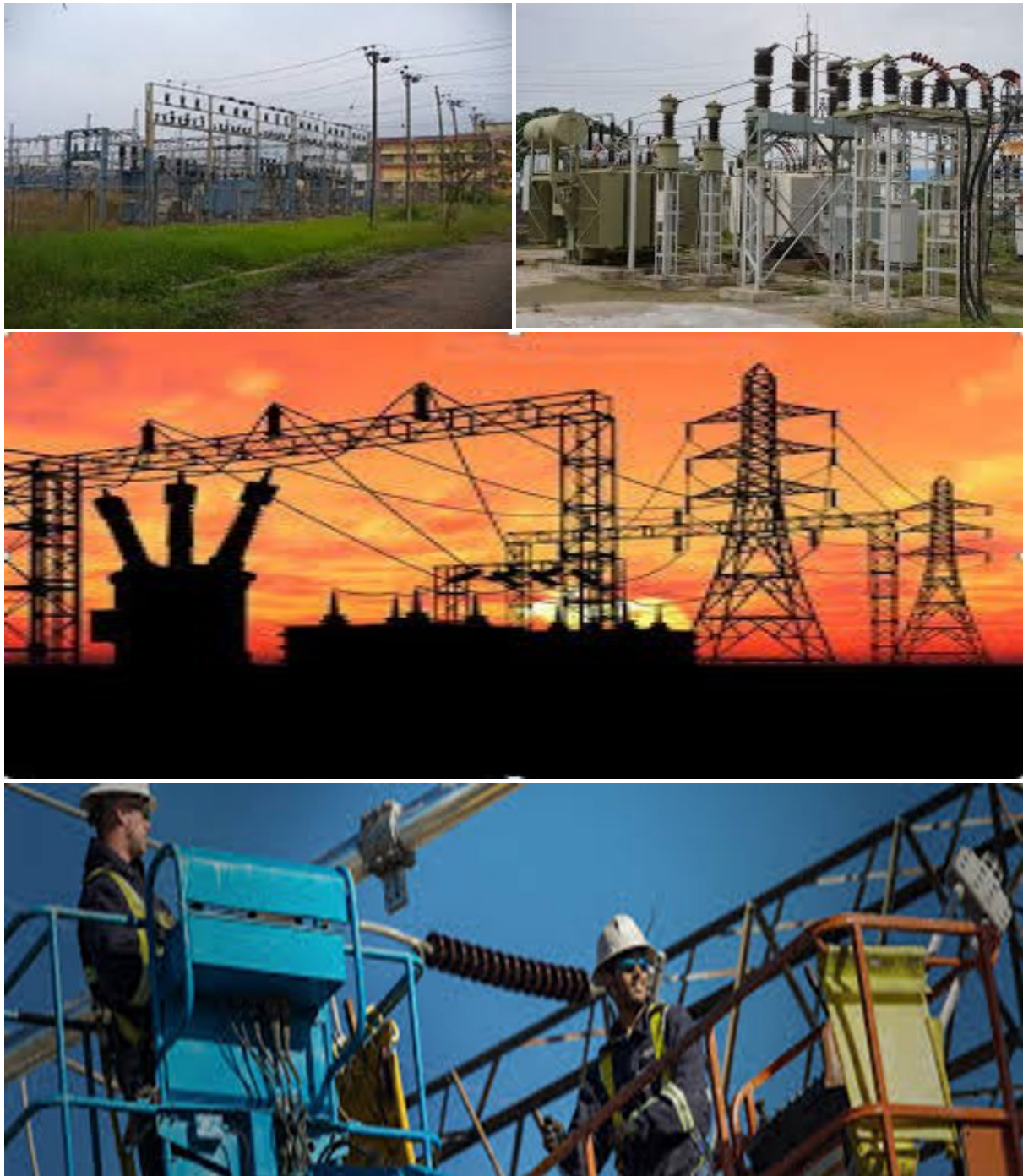


GENERIC ENVIRONMENTAL MANAGEMENT PROGRAMME (EMPr) FOR THE DEVELOPMENT AND EXPANSION OF SUBSTATION INFRASTRUCTURE FOR THE TRANSMISSION AND DISTRIBUTION OF ELECTRICITY



forestry, fisheries  
& the environment

Department:  
Forestry, Fisheries and the Environment  
REPUBLIC OF SOUTH AFRICA

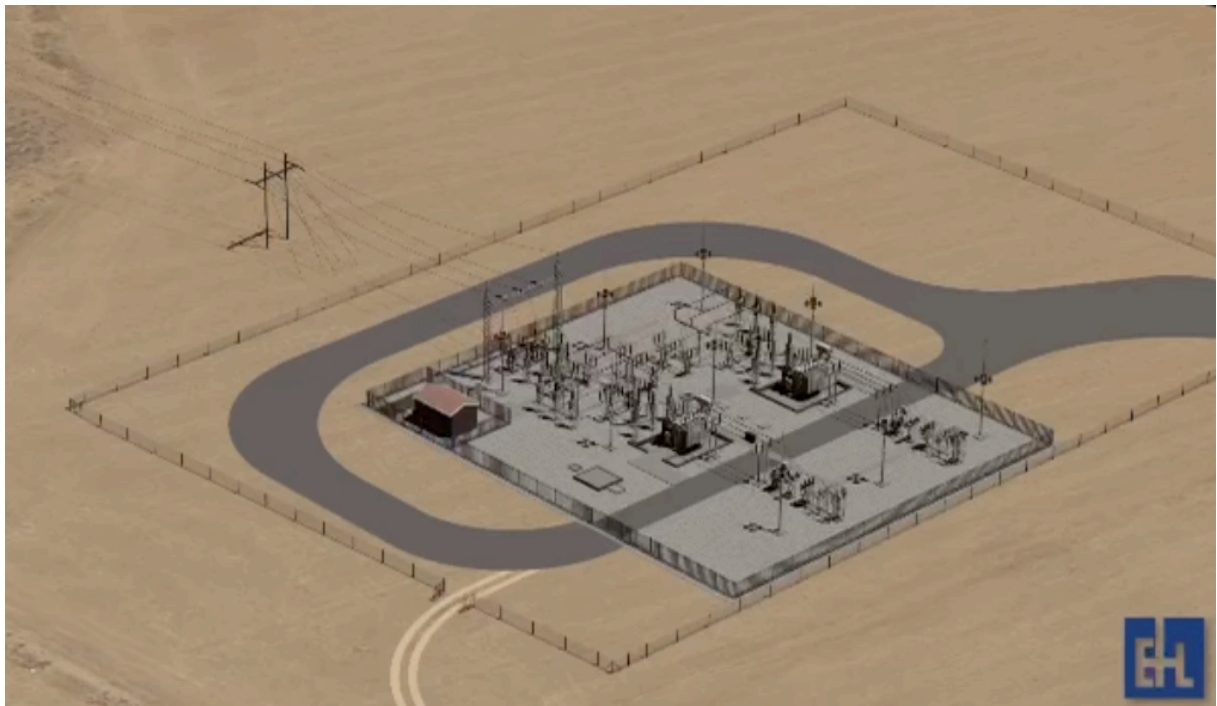


**ENVIRONMENTAL MANAGEMENT PROGRAM FOR ESKOM  
132KV POWER LINE BETWEEN KUDU SUBSTATION (AT  
KOMATI POWER STATION) AND ELDERS SUBSTATION**

**DFFE REF: 2022-06-0014**

**SEPTEMBER 2022**

**Construction of Eskom 132/11kV 2x20MVA Elders Substation**



**COMPILED BY**



**setala**

Head Office  
44 Melrose Boulevard  
Melrose Arch, Johannesburg

Regional Offices  
Modimolle - Limpopo  
Somerset West - Western Cape

Email: [ria@setalaenvironmental.co.za](mailto:ria@setalaenvironmental.co.za)  
Contact: +27 82 568 6344  
Website: [www.setalaenvironmental.com](http://www.setalaenvironmental.com)

Level 2 B-BBEE Contributor  
Reg No: 2014/017865/07

**TABLE OF CONTENTS**

INTRODUCTION..... 1

1. Background ..... 1

2. Purpose ..... 1

3. Objective..... 1

4. Scope..... 1

5. Structure of this document ..... 2

6. Completion of part B: section 1: the pre-approved generic EMPr template ..... 4

7. Amendments of the impact management outcomes and impact management actions ..... 4

8. Documents to be submitted as part of part B: section 2 site specific information and declaration  
5

(i) Amendments to Part B: Section 2 – site specific information and declaration ..... 5

PART A – GENERAL INFORMATION ..... 2

1. DEFINITIONS ..... 2

2. ACRONYMS and ABBREVIATIONS ..... 3

3. ROLES AND RESPONSIBILITIES FOR ENVIRONMENTAL MANAGEMENT PROGRAMME (EMPr)  
IMPLEMENTATION..... 4

4. ENVIRONMENTAL DOCUMENTATION REPORTING AND COMPLIANCE..... 10

4.1 Document control/Filing system ..... 10

4.2 Documentation to be available..... 10

4.3 Weekly Environmental Checklist ..... 10

4.4 Environmental site meetings..... 11

4.5 Required Method Statements ..... 11

4.6 Environmental Incident Log (Diary) ..... 12

4.7 Non-compliance ..... 12

4.8 Corrective action records ..... 13

4.9 Photographic record..... 13

4.10 Complaints register..... 14

4.11 Claims for damages ..... 14

4.12 Interactions with affected parties..... 14

4.13 Environmental audits..... 15

4.14 Final environmental audits..... 15

PART B: SECTION 1: Pre-approved generic EMPr template ..... 16

5. IMPACT MANAGEMENT OUTCOMES AND IMPACT MANAGEMENT ACTIONS ..... 16

5.1 Environmental awareness training ..... 17

5.2 Site Establishment development ..... 19



5.3	Access restricted areas .....	20
5.4	Access roads .....	20
5.5	Fencing and Gate installation .....	22
5.6	Water Supply Management .....	23
5.7	Storm and waste water management .....	24
5.8	Solid and hazardous waste management .....	25
5.9	Protection of watercourses and estuaries .....	26
5.10	Vegetation clearing .....	28
5.11	Protection of fauna .....	29
5.12	Protection of heritage resources .....	30
5.13	Safety of the public .....	31
5.14	Sanitation .....	32
5.15	Prevention of disease .....	33
5.16	Emergency procedures .....	34
5.17	Hazardous substances .....	34
5.18	Workshop, equipment maintenance and storage .....	37
5.19	Batching plants .....	38
5.20	Dust emissions .....	39
5.21	Blasting .....	40
5.22	Noise .....	41
5.23	Fire prevention .....	42
5.24	Stockpiling and stockpile areas .....	42
5.25	Civil works .....	43
5.26	Excavation of foundation, cable trenching and drainage systems .....	44
5.27	Installation of foundations, cable trenching and drainage systems .....	45
5.28	Installation of equipment (circuit breakers, current Transformers, Isolators, Insulators, surge arresters, voltage transformers, earth switches) .....	45
5.30	Cabling and Stringing .....	47
5.31	Testing and Commissioning (all equipment testing, earthing system, system integration) .....	47
5.32	Socio-economic .....	48
5.33	Temporary closure of site .....	49
5.34	Dismantling of old equipment .....	50
5.35	Landscaping and rehabilitation .....	51
6	ACCESS TO THE GENERIC EMPr .....	53
PART B: SECTION 2 .....		54
7	SITE SPECIFIC INFORMATION AND DECLARATION .....	54
7.1	Sub-section 1: contact details and description of the project .....	54



7.2	Sub-section 2: Development footprint site map .....	55
7.3	Sub-section 3: Declaration .....	55
7.4	Sub-section 4: amendments to site specific information (Part B; section 2) .....	55
PART C	.....	56
8	SITE SPECIFIC ENVIRONMENTAL ATTRIBUTES .....	56
APPENDIX 1: METHOD STATEMENTS	.....	57

**List of tables**

Table 1: Guide to roles and responsibilities for implementation of a generic EMPr .....	4
---	---

## INTRODUCTION

### 1. Background

The National Environmental Management Act, 1998 (Act No. 107 of 1998) (NEMA) requires that an environmental management programme (EMPr) be submitted where an environmental impact assessment (EIA) has been identified as the environmental instrument to be utilised as the basis for a decision on an application for environmental authorisation (EA). The content of an EMPr must either contain the information set out in Appendix 4 of the Environmental Impact Assessment Regulations, 2014, as amended (EIA Regulations) or must be a generic EMPr relevant to an application as identified and gazetted by the Minister in a government notice. Once the Minister has identified, through a government notice that a generic EMPr is relevant to an application for EA, that generic EMPr must be applied by all parties involved in the EA process, including but not limited to the applicant and the competent authority (CA).

### 2. Purpose

This document constitutes a generic EMPr relevant to applications for the development or expansion of substation infrastructure for the transmission and distribution of electricity, and all listed and specified activities necessary for the realisation of such infrastructure.

### 3. Objective

The objective of this generic EMPr is to prescribe and pre-approve generally accepted impact management outcomes and impact management actions, which can commonly and repeatedly be used for the avoidance, management and mitigation of impacts and risks associated with the development or expansion of substation infrastructure for the transmission and distribution of electricity. The use of a generic EMPr is intended to reduce the need to prepare and review individual EMPrs for applications of a similar nature.

### 4. Scope

The scope of this generic EMPr applies to the development or expansion of substation infrastructure for the transmission and distribution of electricity requiring EA in terms of NEMA. This generic EMPr applies to activities requiring EA, mainly activity 11 and 47 of the Environmental Impact Assessment Regulations Listing Notice 1 of 2014, as amended, and activity 9 of the Environmental Impact Assessment Regulations Listing Notice 2 of 2014, as amended, and all associated listed or specified activities necessary for the realization of such infrastructure.

## 5. Structure of this document

This document is structured in three parts with an Appendix as indicated in the table below:

Part	Section	Heading	Content
A		Provides general guidance and information and is <b>not legally binding</b>	Definitions, acronyms, roles & responsibilities and documentation and reporting.
B	1	Pre-approved generic EMPr template	<p>Contains generally accepted impact management outcomes and impact management actions required for the avoidance, management and mitigation of impacts and risks associated with the development or expansion of substation infrastructure for the transmission and distribution of electricity, which are presented in the form of a template that has been pre-approved.</p> <p>The template in this section is to be completed by the contractor, with each completed page signed and dated by the holder of the EA prior to commencement of the activity.</p> <p>Where an impact management outcome is not relevant, the words "not applicable" can be inserted in the template under the "responsible persons" column.</p> <p>Once completed and signed, the template represents the EMPr for the activity approved by the CA and is legally binding. The template <b>is not required</b> to be submitted to the CA as once the generic EMPr is gazetted for implementation, it has been approved by the CA.</p> <p>To allow interested and affected parties access to the pre-approved EMPr template for consideration through the decision-making process, the EAP on behalf of the applicant</p> <p>/proponent must make the hard copy of this EMPr available at a public location and where the applicant has a website, the EMPr should also be made available on such publicly accessible website.</p>
	2	Site specific information	Contains preliminary infrastructure layout and a declaration that the applicant/holder of the EA

Part	Section	Heading	Content
			<p>will comply with the pre-approved generic EMPr template contained in <u>Part B: Section 1</u>, and understands that the impact management outcomes and impact management actions are <b>legally binding</b>. The preliminary infrastructure layout must be finalized to inform the final EMPr that is to be submitted with the basic assessment report (BAR) or environmental impact assessment report (EIAR), ensuring that all impact management outcomes and impact management actions have been either pre- approved or approved in terms of <u>Part C</u>.</p> <p>This section <b>must be</b> submitted to the CA together with the final BAR or EIAR. The information submitted to the CA will be considered to be incomplete should a signed copy of <u>Part B: section 2</u> not be submitted. Once approved, this Section forms part of the EMPr for the development and is legally binding.</p>
C		Site specific sensitivities/ attributes	<p>If any specific environmental sensitivities/ attributes are present on the site which require site specific impact management outcomes and impact management actions, not included in the pre-approved generic EMPr, to manage impacts, these specific impact management outcomes and impact management actions must be included in this section. These specific environmental attributes must be referenced spatially and impact management outcomes and impact management actions must be provided. These specific impact management outcomes and impact management actions must be presented in the format of the pre-approved EMPr template (<u>Part B: section 1</u>)</p> <p>This section will not be required should the site contain no specific environmental sensitivities or attributes. However, if <u>Part C</u> is applicable to the site, it <b>is required</b> to be submitted together with the BAR or EIAR, for consideration of, and decision on, the application for EA. The information in this section must be prepared by an EAP and must contain his/her name and expertise including a curriculum vitae. Once approved, Part C forms part of the EMPr for the site and is legally binding.</p> <p>This section applies only to additional impact management outcomes and impact management actions that are necessary for the avoidance, management and mitigation of impacts and risks associated with the specific development or expansion and which are not already included in <u>Part B: section 1</u>.</p>
Appendix 1			<p>Contains the method statements to be prepared prior to commencement of the activity. The method statements are <b>not required</b> to be submitted to the competent authority. The method statements, once signed, form part of the generic EMPr for the development and are legally binding.</p> <p>Method statements may be amended.</p>



## 6. Completion of part B: section 1: the pre-approved generic EMPr template

The template is to be completed prior to commencement of the activity, by providing the following information for each environmental impact management action:

- For implementation
  - a 'responsible person',
  - a method for implementation,
  - a timeframe for implementation
- For monitoring
  - a responsible person
  - frequency
  - evidence of compliance.

The completed template must be signed and dated by the holder of the EA prior to commencement of the activity. The method statements prepared and agreed to by the holder of the EA must be appended to the template as Appendix 1. Each method statement must be signed and dated on each page by the holder of the EA. This template once signed and dated is legally binding. The holder of the EA will remain responsible for its implementation.

## 7. Amendments of the impact management outcomes and impact management actions

Once the activity has commenced, a holder of an EA may make amendments to the impact management outcomes and impact management actions in the following manner:

- Amendment of the impact management outcomes: in line with the process contemplated in Regulation 37 of the EIA Regulations; and
- Amendment of the impact management actions: in line with the process contemplated in Regulation 36 of the EIA Regulations.

## 8. Documents to be submitted as part of part B: section 2 site specific information and declaration

Part B: Section 2 has three distinct sub-sections. The first and third sub-sections are in a template format. Sub-section two requires a map to be produced.

Sub-section 1 contains the project name, the applicant's name and contact details, the site information, which includes coordinates of the property or farm in which the proposed substation infrastructure is proposed as well as the 21-digit Surveyor General code of each cadastral land parcel and, where available, the farm name.

Sub-section 2 is to be prepared by an EAP and must contain his/her name and expertise including a curriculum vitae. This sub-section must include a map of the site sensitivity overlaid with the preliminary infrastructure layout using the national web based environmental screening tool, when available for compulsory use at: <https://screening.environment.gov.za/screeningtool>. The sensitivity map shall identify the nature of each sensitive feature e.g. threatened plant species, archaeological site, etc. Sensitivity maps shall identify features both within the planned working area and any known sensitive features and within 50 m from the development footprint.

Sub-section 3 is the declaration that the applicant (s)/proponent (s) or holder of the EA in the case of a change of ownership must complete which confirms that the applicant/EA holder will comply with the pre-approved 'generic EMPr' template in Section 1 and understands that the impact management outcomes and impact management actions are legally binding.

**(a) Amendments to Part B: Section 2 – site specific information and declaration**

Should the EA be transferred, Part B: Section 2 must be completed by the new applicant/proponent and submitted with the application for an amendment of the EA in terms of regulations 29 or 31 of the EIA Regulations, whichever applies. The information submitted as part of such an application for an amendment to an EA will be considered to be incomplete should a signed copy of Part B: Section 2 not be submitted. Once approved, Part B: Section 2 forms part of the EMPr for the development and the EMPr becomes legally binding to the new EA holder.

## PART A – GENERAL INFORMATION

### 1. DEFINITIONS

In this EMPr any word or expression to which a meaning has been assigned in the NEMA or EIA Regulations has that meaning, and unless the context requires otherwise –

**"clearing"** means the clearing and removal of vegetation, whether partially or in whole, including trees and shrubs, as specified;

**"construction camp"** is the area designated for key construction infrastructure and services, including but not limited to offices, overnight vehicle parking areas, stores, the workshop, stockpile and lay down areas, hazardous storage areas (including fuels), the batching plant (if one is located at the construction camp), designated access routes, equipment cleaning areas and the placement of staff accommodation, cooking and ablution facilities, waste and wastewater management;

**"contractor"** - The Contractor has overall responsibility for ensuring that all work, activities, and actions linked to the delivery of the contract, are in line with the Environmental Management Programme and that Method Statements are implemented as described.

**"hazardous substance"** is a substance governed by the Hazardous Substances Act, 1973 (Act No. 15 of 1973) as well as the Hazardous Chemical and Substances Regulations, 1995;

**"method statement"** means a written submission by the Contractor to the Project Manager in response to this EMPr or a request by the Project Manager and ECO. The method statement must set out the equipment, materials, labour and method(s) the Contractor proposes using to carry out an activity identified by the Project Manager when requesting the Method Statement. This must be done in such detail that the Project Manager and ECO is able to assess whether the Contractor's proposal is in accordance with this specification and/or will produce results in accordance with this specification;

The method statement must cover as a minimum applicable details with regard to:

- (i) Construction procedures;
- (ii) Plant, materials and equipment to be used;
- (iii) Transporting the equipment to and from site;
- (iv) How the plant/ material/ equipment will be moved while on site;
- (v) How and where the plant/ material/ equipment will be stored;
- (vi) The containment (or action to be taken if containment is not possible) of leaks or spills of any liquid or material that may occur;
- (vii) Timing and location of activities;
- (viii) Compliance/ non-compliance; and
- (ix) Any other information deemed necessary by the Project Manager.

**"slope"** means the inclination of a surface expressed as one unit of rise or fall for so many horizontal units;

“**solid waste**” means all solid waste, including construction debris, hazardous waste, excess cement/ concrete, wrapping materials, timber, cans, drums, wire, nails, food and domestic waste (e.g. plastic packets and wrappers);

“**spoil**” means excavated material which is unsuitable for use as material in the construction works or is material which is surplus to the requirements of the construction works;

“**topsoil**” means a varying depth (up to 300 mm) of the soil profile irrespective of the fertility, appearance, structure, agricultural potential, fertility and composition of the soil;

“**works**” means the works to be executed in terms of the Contract

## 2. ACRONYMS and ABBREVIATIONS

<b>CA</b>	Competent Authority
<b>cEO</b>	Contractors Environmental Officer
<b>dEO</b>	Developer Environmental Officer
<b>DPM</b>	Developer Project Manager
<b>DSS</b>	Developer Site Supervisor
<b>EAR</b>	Environmental Audit Report
<b>ECA</b>	Environmental Conservation Act No. 73 of 1989
<b>ECO</b>	Environmental Control Officer
<b>EA</b>	Environmental Authorisation
<b>EIA</b>	Environmental Impact Assessment
<b>ERAP</b>	Emergency Response Action Plan
<b>EMPr</b>	Environmental Management Programme Report
<b>EAP</b>	Environmental Assessment Practitioner
<b>FPA</b>	Fire Protection Agency
<b>HCS</b>	Hazardous chemical Substance
<b>NEMA</b>	National Environmental Management Act, 1998 (Act No. 107 of 1998)
<b>NEMBA</b>	National Environmental Management: Biodiversity Act ,2004 (Act No. 10 of 2004)
<b>NEMWA</b>	National Environmental Management: Waste Act, 2008 (Act No. 59 of 2008)
<b>MSDS</b>	Material Safety Data Sheet
<b>RI&amp;AP's</b>	Registered Interested and affected parties

### 3. ROLES AND RESPONSIBILITIES FOR ENVIRONMENTAL MANAGEMENT PROGRAMME (EMPr) IMPLEMENTATION

The effective implementation of this generic EMPr is dependent on established and clear roles, responsibilities and reporting lines within an institutional framework. This section of the EMPr gives guidance to the various environmental roles and reporting lines, however, project specific requirements will ultimately determine the need for the appointment of specific person(s) to undertake specific roles and or responsibilities. As such, it must be noted that in the event that no specific person, for example, an environmental control officer (ECO) is appointed, the holder of the EA remains responsible for ensuring that the duties indicated in this document for action by the ECO are undertaken.

**Table 1:** Guide to roles and responsibilities for implementation of an EMPr

Responsible Person(s)	Role and Responsibilities
Developer's Project Manager (DPM)	<p><u>Role</u></p> <p>The Project Developer is accountable for ensuring compliance with the EMPr and any conditions of approval from the competent authority (CA). Where required, an environmental control officer (ECO) must be contracted by the Project Developer to objectively monitor the implementation of the EMPr according to relevant environmental legislation, and the conditions of the environmental authorisation (EA). The Project Developer is further responsible for providing and giving mandate to enable the ECO to perform responsibilities, and he must ensure that the ECO is integrated as part of the project team while remaining independent.</p> <p><u>Responsibilities</u></p> <ul style="list-style-type: none"> <li>- Be fully conversant with the conditions of the EA;</li> <li>- Ensure that all stipulations within the EMPr are communicated and adhered to by the Developer and its Contractor(s);</li> <li>- Issuing of site instructions to the Contractor for corrective actions required;</li> <li>- Monitor the implementation of the EMPr throughout the project by means of site inspections and meetings. Overall management of the project and EMPr implementation; and</li> <li>- Ensure that periodic environmental performance audits are undertaken on the project implementation.</li> </ul>

Responsible Person(s)	Role and Responsibilities
Developer Site Supervisor (DSS)	<p><u>Role</u> The DSS reports directly to the DPM, oversees site works, liaises with the contractor(s) and the ECO. The DSS is responsible for the day to day implementation of the EMPr and for ensuring the compliance of all contractors with the conditions and requirements stipulated in the EMPr.</p> <p><u>Responsibilities</u></p> <ul style="list-style-type: none"> <li>- Ensure that all contractors identify a contractor's Environmental Officer (cEO);</li> <li>- Must be fully conversant with the conditions of the EA. Oversees site works, liaison with Contractor, DPM and ECO;</li> <li>- Must ensure that all landowners have the relevant contact details of the site staff, ECO and cEO;</li> <li>- Issuing of site instructions to the Contractor for corrective actions required;</li> <li>- Will issue all non-compliances to contractors; and</li> <li>- Ratify the Monthly Environmental Report.</li> </ul>
Environmental Control Officer (ECO)	<p><u>Role</u> The ECO should have appropriate training and experience in the implementation of environmental management specifications. The primary role of the ECO is to act as an independent quality controller and monitoring agent regarding all environmental concerns and associated environmental impacts. In this respect, the ECO is to conduct periodic site inspections, attend regular site meetings, pre-empt problems and suggest mitigation and be available to advise on incidental issues that arise. The ECO is also required to conduct compliance audits, verifying the monitoring reports submitted by the cEO. The ECO provides feedback to the DSS and Project Manager regarding all environmental matters. The Contractor, cEO and dEO are answerable to the Environmental Control Officer for non-compliance with the Performance Specifications as set out in the EA and EMPr.</p> <p>The ECO provides feedback to the DSS and Project Manager, who in turn reports back to the Contractor and potential and Registered Interested &amp; Affected Parties' (RI&amp;AP's), as required. Issues of non-compliance raised by the ECO must be taken up by the Project Manager, and resolved with the Contractor as per the conditions of his contract. Decisions regarding environmental procedures, specifications and requirements which have a cost implication (i.e. those that are deemed to be a variation, not allowed for in the</p>

Responsible Person(s)	Role and Responsibilities
	<p>Performance Specification) must be endorsed by the Project Manager. The ECO must also, as specified by the EA, report to the relevant CA as and when required.</p> <p><u>Responsibilities</u>            The responsibilities of the ECO will include the following:</p> <ul style="list-style-type: none"> <li>- Be aware of the findings and conclusions of all EA related to the development;</li> <li>- Be familiar with the recommendations and mitigation measures of this EMPr;</li> <li>- Be conversant with relevant environmental legislation, policies and procedures, and ensure compliance with them;</li> <li>- Undertake regular and comprehensive site inspections / audits of the construction site according to the generic EMPr and applicable licenses in order to monitor compliance as required;</li> <li>- Educate the construction team about the management measures contained in the EMPr and environmental licenses;</li> <li>- Compilation and administration of an environmental monitoring plan to ensure that the environmental management measures are implemented and are effective;</li> <li>- Monitoring the performance of the Contractors and ensuring compliance with the EMPr and associated Method Statements;</li> <li>- In consultation with the Developer Site Supervisor order the removal of person(s) and/or equipment which are in contravention of the specifications of the EMPr and/or environmental licenses;</li> <li>- Liaison between the DPM, Contractors, authorities and other lead stakeholders on all environmental concerns;</li> <li>- Compile a regular environmental audit report highlighting any non-compliance issues as well as satisfactory or exceptional compliance with the EMPr;</li> <li>- Validating the regular site inspection reports, which are to be prepared by the contractor Environmental Officer (cEO);</li> <li>- Checking the cEO's record of environmental incidents (spills, impacts, legal transgressions etc.) as well as corrective and preventive actions taken;</li> <li>- Checking the cEO's public complaints register in which all complaints are recorded, as well as action taken;</li> </ul>

Responsible Person(s)	Role and Responsibilities
	<ul style="list-style-type: none"> <li>- Assisting in the resolution of conflicts;</li> <li>- Facilitate training for all personnel on the site – this may range from carrying out the training, to reviewing the training programmes of the Contractor;</li> <li>- In case of non-compliances, the ECO must first communicate this to the Senior Site Supervisor, who has the power to ensure this matter is addressed. Should no action or insufficient action be taken, the ECO may report this matter to the authorities as non-compliance;</li> <li>- Maintenance, update and review of the EMPr;</li> <li>- Communication of all modifications to the EMPr to the relevant stakeholders.</li> </ul>
<p>developer Environmental Officer (dEO)</p>	<p><u>Role</u></p> <p>The dEOs will report to the Project Manager and are responsible for implementation of the EMPr, environmental monitoring and reporting, providing environmental input to the Project Manager and Contractor's Manager, liaising with contractors and the landowners as well as a range of environmental coordination responsibilities.</p> <p><u>Responsibilities</u></p> <ul style="list-style-type: none"> <li>- Be fully conversant with the EMPr;</li> <li>- Be familiar with the recommendations and mitigation measures of this EMPr, and implement these measures;</li> <li>- Ensure that all stipulations within the EMPr are communicated and adhered to by the Employees, Contractor(s) ;</li> <li>- Confine the development site to the demarcated area;</li> <li>- Conduct environmental internal audits with regards to EMPr and authorisation compliance (oncEO);</li> <li>- Assist the contractors in addressing environmental challenges on site;</li> <li>- Assist in incident management:</li> <li>- Reporting environmental incidents to developer and ensuring that corrective action is taken, and lessons learnt shared;</li> <li>- Assist the contractor in investigating environmental incidents and compile investigation reports;</li> <li>- Follow-up on pre-warnings, defects, non-conformance reports;</li> </ul>



Responsible Person(s)	Role and Responsibilities
	<ul style="list-style-type: none"> <li>- Measure and communicate environmental performance to the Contractor;</li> <li>- Conduct environmental awareness training on site together with ECO and cEO;</li> <li>- Ensure that the necessary legal permits and / or licenses are in place and up to date;</li> <li>- Acting as Developer's Environmental Representative on site and work together with the ECO and contractor;</li> </ul>
Contractor	<p><u>Role</u></p> <p>The Contractor appoints the cEO and has overall responsibility for ensuring that all work, activities, and actions linked to the delivery of the contract are in line with the EMPr and that Method Statements are implemented as described. External contractors must ensure compliance with this EMPr while performing the onsite activities as per their contract with the Project Developer. The contractors are required, where specified, to provide Method Statements setting out in detail how the impact management actions contained in the EMPr will be implemented during the development or expansion of substation infrastructure for the transmission and distribution of electricity activities.</p> <p><u>Responsibilities</u></p> <ul style="list-style-type: none"> <li>- project delivery and quality control for the development services as per appointment;</li> <li>- employ a suitably qualified person to monitor and report to the Project Developer's appointed person on the daily activities on-site during the construction period;</li> <li>- ensure that safe, environmentally acceptable working methods and practices are implemented and that equipment is properly operated and maintained, to facilitate proper access and enable any operation to be carried out safely;</li> <li>- attend on site meeting(s) prior to the commencement of activities to confirm the procedure and designated activity zones;</li> <li>- ensure that contractors' staff repair, at their own cost, any environmental damage as a result of a contravention of the specifications contained in EMPr, to the satisfaction of the ECO.</li> </ul>

Responsible Person(s)	Role and Responsibilities
contractor Environmental Officer (cEO)	<p><u>Role</u></p> <p>Each Contractor affected by the EMPr should appoint a cEO, who is responsible for the on-site implementation of the EMPr (or relevant sections of the EMPr). The Contractor's representative can be the site agent; site engineer; a dedicated environmental officer; or an independent consultant. The Contractor must ensure that the Contractor's Representative is suitably qualified to perform the necessary tasks and is appointed at a level such that she/he can interact effectively with other site Contractors, labourers, the Environmental Control Officer and the public. As a minimum the cEO shall meet the following criteria:</p> <p><u>Responsibilities</u></p> <ul style="list-style-type: none"> <li>- Be on site throughout the duration of the project and be dedicated to the project;</li> <li>- Ensure all their staff are aware of the environmental requirements, conditions and constraints with respect to all of their activities on site;</li> <li>- Implementing the environmental conditions, guidelines and requirements as stipulated within the EA, EMPr and Method Statements;</li> <li>- Attend the Environmental Site Meeting;</li> <li>- Undertaking corrective actions where non-compliances are registered within the stipulated timeframes;</li> <li>- Report back formally on the completion of corrective actions;</li> <li>- Assist the ECO in maintaining all the site documentation;</li> <li>- Prepare the site inspection reports and corrective action reports for submission to the ECO;</li> <li>- Assist the ECO with the preparing of the monthly report; and</li> <li>- Where more than one Contractor is undertaking work on site, each company appointed as a Contractor will appoint a cEO representing that company.</li> </ul>

#### 4. ENVIRONMENTAL DOCUMENTATION REPORTING AND COMPLIANCE

To ensure accountable and demonstrated implementation of the EMPr, a number of reporting systems, documentation controls and compliance mechanisms must be in place for all substation infrastructure projects as a minimum requirement.

##### 4.1 Document control/Filing system

The holder of the EA is solely responsible for the upkeep and management of the EMPr file. As a minimum, all documentation detailed below will be stored in the EMPr file. A hard copy of all documentation shall be filed, while an electronic copy may be kept where relevant. A duplicate file will be maintained in the office of the DSS (where applicable). This duplicate file must remain current and up-to-date. The filing system must be updated and relevant documents added as required. The EMPr file must be made available at all times on request by the CA or other relevant authorities. The EMPr file will form part of any environmental audits undertaken as prescribed in the EIA Regulations.

##### 4.2 Documentation to be available

At the outset of the project the following preliminary list of documents shall be placed in the filing system and be accessible at all times:

- Full copy of the signed EA from the CA in terms of NEMA, granting approval for the development or expansion;
- Copy of the generic and site specific EMPr as well as any amendments thereof;
- Copy of declaration of implementing generic EMPr and subsequent approval of site specific EMPr and amendments thereof;
- All method statements;
- Completed environmental checklists;
- Minutes and attendance register of environmental site meetings;
- An up-to-date environmental incident log;
- A copy of all instructions or directives issued;
- A copy of all corrective actions signed off. The corrective actions must be filed in such a way that a clear reference is made to the non-compliance record;
- Complaints register.

##### 4.3 Weekly Environmental Checklist

The ECOs are required to complete a Weekly Environmental Checklist, the format of which is to be agreed prior to commencement of the activity. The ECOs are required to sign and date the checklist, retain a copy in the EMPr file and submit a copy of the completed checklist to the DSS on a weekly basis.

The checklists will form the basis for the Monthly Environmental Reports. Copies of all completed checklists will be attached as Annexures to the Environmental Audit Report as required in terms of the EIA Regulations.

#### 4.4 Environmental site meetings

Minutes of the environmental site meetings shall be kept. The minutes must include an attendance register and will be attached to the Monthly Report that is distributed to attendees. Each set of minutes must clearly record "Matters for Attention" that will be reviewed at the next meeting.

#### 4.5 Required Method Statements

The method statement will be done in such detail that the ECOs are enabled to assess whether the contractor's proposal is in accordance with the EMPr.

The method statement must cover applicable details with regard to:

- development procedures;
- materials and equipment to be used;
- getting the equipment to and from site;
- how the equipment/ material will be moved while on site;
- how and where material will be stored;
- the containment (or action to be taken if containment is not possible) of leaks or spills of any liquid or material that may occur;
- timing and location of activities;
- compliance/ non-compliance with the EMPr; and
- any other information deemed necessary by the ECOs.

Unless indicated otherwise by the Project Manager, the Contractor shall provide the following method statements to the Project Manager no less than 14 days prior to the commencement date of the activity:

- Site establishment – Camps, Lay-down or storage areas, satellite camps, infrastructure;
- Batch plants;
- Workshop or plant servicing;
- Handling, transport and storage of Hazardous Chemical Substance's;
- Vegetation management – Protected, clearing, aliens, felling;
- Access management – Roads, gates, crossings etc.;
- Fire plan;
- Waste management – transport, storage, segregation, classification, disposal (all waste streams);
- Social interaction – complaints management, compensation claims, access to properties etc.;
- Water – use (source, abstraction and disposal), access and all related information, crossings and mitigation;
- Emergency preparedness – Spills, training, other environmental emergencies;
- Dust and noise management methodologies;
- Fauna interaction and risk management – only if the risk was identified – wildlife interaction especially on game farms; and
- Heritage and palaeontology management.

The ECOs shall monitor and ensure that the contractors perform in accordance with these method statements. Completed and agreed method statements between the holder of the EA and the contractor shall be captured in Appendix 1.

#### 4.6 Environmental Incident Log (Diary)

The ECOs are required to maintain an up-to-date and current Environmental Incident Log (environmental diary). The Environmental Incident Log is a means to record all environmental incidents and/or all non-compliance notice would not be issued. An environmental incident is defined as:

- Any deviation from the listed impact management actions (listed in this EMPr) that may be addressed immediately by the ECOs. (For example a contractor's staff member littering or a drip tray that has not been emptied);
- Any environmental impact resulting from an action or activity by a contractor in contravention of the environmental stipulations and guidelines listed in the EMPr which as a single event would have a minor impact but which if cumulative and continuous would have a significant effect (for example no toilet paper available in the ablutions for an afternoon); and
- General environmental information such as road kills or injured wildlife.

The ECOs are to record all environmental incidents in the Environmental Incident Log. All incidents regardless of severity must be reported to the Developer. The Log is to be kept in the EMPr file and at a minimum the following will be recorded for each environmental incident:

- The date and time of the incident;
- Description of the incident;
- The name of the Contractor responsible;
- The incident must be listed as significant or minor;
- If the incident is listed as significant, a non-compliance notice must be issued, and recorded in the log;
- Remedial or corrective action taken to mitigate the incident; and
- Record of repeat minor offences by the same contractor or staff member.

The Environmental Incident Log will be captured in the EAR.

#### 4.7 Non-compliance

A non-compliance notice will be issued to the responsible contractor by the ECOs via the DSS or Project Manager. The non-compliance notice will be issued in writing; a copy filed in the EMPr file and will at a minimum include the following:

- Time and date of the non-compliance;
- Name of the contractor responsible;
- Nature and description of the non-compliance;
- Recommended / required corrective action; and
- Date by which the corrective action to be completed.
- The contractors shall act immediately when a notice of non-compliance is received and correct whatever is the cause for the issuing of the notice. Complaints received regarding activities on the development site pertaining to the environment shall be

recorded in a dedicated register and the response noted with the date and action taken. The ECO should be made aware of any complaints. Any non-compliance with the agreed procedures of the EMPr is a transgression of the various statutes and laws that define the manner by which the environment is managed. Failure to redress the cause shall be reported to the relevant CA for them to deal with the transgression, as it deems fit. The contractor is deemed not to have complied with the EMPr if, inter alia, There is a deviation from the environmental conditions, impact management outcomes and impact management actions activities, as approved in generic and site specific EMPr as relevant as set out in the EMPr, which deviation has, or may cause, an environmental impact.

#### 4.8 Corrective action records

For each non-compliance notice issued, a documented corrective action must be recorded. On receiving a non-compliance notice from the DSS, the contractor's CEO will ensure that the corrective actions required take place within the stipulated timeframe. On completion of the corrective action the CEO is to issue a Corrective Action Report in writing to the ECOs. If satisfied that the corrective action has been completed, the ECOs are to sign-off on the Corrective Action Report, and attach the report to the non-compliance notice in the EMPr file. A corrective action is considered complete once the report has signed off by the ECOs.

#### 4.9 Photographic record

A digital photographic record will be kept. The photographic record will be used to show before, during and post rehabilitation evidence of the project as well used in cases of damages claims if they arise. Each image must be dated and a brief description note attached.

The Contractor shall:

1. Allow the ECOs access to take photographs of all areas, activities and actions.

The ECOs shall keep an electronic database of photographic records which will include:

1. Pictures of all areas designated as work areas, camp areas, development sites and storage areas taken before these areas are set up;
2. All bunding and fencing;
3. Road conditions and road verges;
4. Condition of all farm fences;
5. Topsoil storage areas;
6. All areas to be cordoned off during construction;
7. Waste management sites;
8. Ablution facilities (inside and out);
9. Any non-conformances deemed to be "significant";
10. All completed corrective actions for non-compliances;
11. All required signage;
12. Photographic recordings of incidents;
13. All areas before, during and post rehabilitation; and
14. Include relevant photographs in the Final Environmental Audit Report.

#### 4.10 Complaints register

The ECOs shall keep a current and up-to-date complaints register. The complaints register is to be a record of all complaints received from communities, stakeholders and individuals. The Complaints Record shall:

1. Record the name and contact details of the complainant;
2. Record the time and date of the complaint;
3. Contain a detailed description of the complaint;
4. Where relevant and appropriate, contain photographic evidence of the complaint or damage (ECOs to take relevant photographs); and
5. Contain a copy of the ECOs written response to each complaint received and keep a record of any further correspondence with the complainant. The ECO's written response will include a description of any corrective action to be taken and must be signed by the Contractor, ECO and affected party. Where a damage claim is issued by the complainant, the ECOs shall respond as described in **(section 4.11)** below.

#### 4.11 Claims for damages

In the event that a Claim for Damages is submitted by a community, landowner or individual, the ECOs shall:

1. Record the full detail of the complaint as described in **(section 4.10)** above;
2. The DPM will evaluate the claim and associated damage and submit the evaluation to the Senior Site Representative for approval;
3. Following consideration by the DPM, the claim is to be resolved and settled immediately, or the reason for not accepting the claim communicated in writing to the claimant. Should the claimant not accept this, the ECO shall, in writing report the incident to the Developer's negotiator and legal department; and
4. A formal record of the response by the ECOs to the claimant as well as the rectification of the method of making payments not amount will be recorded in the EMPr file.

#### 4.12 Interactions with affected parties

Open, transparent and good relations with affected landowners, communities and regional staff are an essential aspect to the successful management and mitigation of environmental impacts.

The ECOs shall:

1. Ensure that all queries, complaints and claims are dealt within an agreed timeframe;
2. Ensure that any or all agreements are documented, signed by all parties and a record of the agreement kept in the EMPr file;
3. Ensure that a complaints telephone numbers are made available to all landowners and affected parties; and
4. Ensure that contact with affected parties is courteous at all times;

#### 4.13 Environmental audits

Internal environmental audits of the activity and implementation of the EMPr must be undertaken. The findings and outcomes included in the EMPr file and submitted to the CA at intervals as indicated in the EA.

The ECOs must prepare a monthly EAR. The report will be tabled as the key point on the agenda of the Environmental Site Meeting. The Report is submitted for acceptance at the meeting and the final report will be circulated to the Project Manager and filed in the EMPr file. At a frequency determined by the EA, the ECOs shall submit the monthly reports to the CA. At a minimum the monthly report is to cover the following:

- Weekly Environmental Checklists;
- Deviations and non-compliances with the checklists;
- Non-compliances issued;
- Completed and reported corrective actions;
- Environmental Monitoring;
- General environmental findings and actions; and
- Minutes of the Bi-monthly Environmental Site Meetings.

#### 4.14 Final environmental audits

On final completion of the rehabilitation and/or requirements of the EA a final EAR is to be prepared and submitted to the CA. The EAR must comply with Appendix 7 of the EIA Regulations.



**PART B: SECTION 1: Pre-approved generic EMPr template****5. IMPACT MANAGEMENT OUTCOMES AND IMPACT MANAGEMENT ACTIONS**

This section provides a pre-approved generic EMPr template with aspects that are common to the development of substation infrastructure for the transmission and distribution of electricity. There is a list of aspects identified for the development or expansion of substation infrastructure for the transmission and distribution of electricity, and for each aspect a set of prescribed impact management outcomes and associated impact management actions have been identified. Holders of EAs are responsible to ensure the implementation of these outcomes and actions for all projects as a minimum requirement, in order to mitigate the impact of such aspects identified for the development or expansion of substation infrastructure for the transmission and distribution of electricity.

The template provided below is to be completed by providing the information under each heading for each environmental impact management action.

The completed template must be signed and dated on each page by both the contractor and the holder of the EA prior to commencement of the activity. The method statements prepared and agreed to by the holder of the EA must be appended to the template as Appendix 1. Each method statement must also be duly signed and dated on each page by the contractor and the holder of the EA. This template, once signed and dated, is legally binding. The holder of the EA will remain responsible for its implementation.

### 5.1 Environmental awareness training

**Impact management outcome:** All onsite staff are aware and understands the individual responsibilities in terms of this EMPr.

Impact Management Actions	Implementation			Monitoring		
	Responsible person	Method of implementation	Timeframe for implementation	Responsible person	Frequency	Evidence of compliance
<ul style="list-style-type: none"> <li>- All staff must receive environmental awareness training prior to commencement of the activities;</li> <li>- The Contractor must allow for sufficient sessions to train all personnel with no more than 20 personnel attending each course;</li> <li>- Refresher environmental awareness training is available as and when required;</li> <li>- All staff are aware of the conditions and controls linked to the EA and within the EMPr and made aware of their individual roles and responsibilities in achieving compliance with the EA and EMPr;</li> <li>- The Contractor must erect and maintain information posters at key locations on site, and the posters must include the following information as a minimum:               <ul style="list-style-type: none"> <li>a) Safety notifications; and</li> <li>b) No littering.</li> </ul> </li> <li>- Environmental awareness training must include as a minimum the following:               <ul style="list-style-type: none"> <li>a) Description of significant environmental impacts, actual or potential, related to their work activities;</li> </ul> </li> </ul>	ECO and cEO	Environmental Induction training; Toolbox talks; other pertinent training aids.	Initially prior to construction commencing ECO to induct Construction Management and cEO, and thereafter repeated for all new employees and yearly. Toolbox talks to be presented weekly.	ECO	Monthly	Signed induction and toolbox talk, or training registers.

<ul style="list-style-type: none"> <li>b) Mitigation measures to be implemented when carrying out specific activities;</li> <li>c) Emergency preparedness and response procedures;</li> <li>d) Emergency procedures;</li> <li>e) Procedures to be followed when working near or within sensitive areas;</li> <li>f) Wastewater management procedures;</li> <li>g) Water usage and conservation;</li> <li>h) Solid waste management procedures;</li> <li>i) Sanitation procedures;</li> <li>j) Fire prevention; and</li> <li>k) Disease prevention.</li> </ul> <ul style="list-style-type: none"> <li>– A record of all environmental awareness training courses undertaken as part of the EMP must be available;</li> <li>– Educate workers on the dangers of open and/or unattended fires;</li> <li>– A staff attendance register of all staff to have received environmental awareness training must be available.</li> <li>– Course material must be available and presented in appropriate languages that all staff can understand.</li> </ul>					
--	--	--	--	--	--

## 5.2 Site Establishment development

**Impact management outcome:** Impacts on the environment are minimised during site establishment and the development footprint are kept to demarcated development area.

Impact Management Actions	Implementation			Monitoring		
	Responsible person	Method of implementation	Timeframe for implementation	Responsible person	Frequency	Evidence of compliance
<ul style="list-style-type: none"> <li>- A method statement must be provided by the contractor prior to any onsite activity that includes the layout of the construction camp in the form of a plan showing the location of key infrastructure and services (where applicable), including but not limited to offices, overnight vehicle parking areas, stores, the workshop, stockpile and lay down areas, hazardous materials storage areas (including fuels), the batching plant (if one is located at the construction camp), designated access routes, equipment cleaning areas and the placement of staff accommodation, cooking and ablution facilities, waste and wastewater management;</li> <li>- Location of camps must be within approved area to ensure that the site does not impact on sensitive areas identified in the environmental assessment or site walk through;</li> <li>- Sites must be located where possible on previously disturbed areas;</li> <li>- The camp must be fenced in accordance with <b>Section 5.5: Fencing and gate installation</b>; and</li> <li>- The use of existing accommodation for contractor staff, where possible, is encouraged.</li> </ul>	Contractor	Method Statement compilation and communication of Method Statements to employees. Use of EIA and Specialist Studies to locate site camps.	Prior to construction.	ECO	Monthly	Signed Method Statements; signed proof of communication register; Liaison with ECO regarding site camp placement.

### 5.3 Access restricted areas

**Impact management outcome:** Access to restricted areas prevented.

Impact Management Actions	Implementation			Monitoring		
	Responsible person	Method of implementation	Timeframe for implementation	Responsible person	Frequency	Evidence of compliance
<ul style="list-style-type: none"> <li>– Identification of access restricted areas is to be informed by the environmental assessment, site walk through and any additional areas identified during development;</li> <li>– Erect, demarcate and maintain a temporary barrier with clear signage around the perimeter of any access restricted area, colour coding could be used if appropriate; and</li> <li>– Unauthorised access and development related activity inside access restricted areas is prohibited.</li> </ul>	Contractor	Use of EIA and Specialist Studies to locate sensitive areas and 'nogo' areas.	Prior to construction in new areas	ECO	Monthly	Contractor compliance with sensitive areas and 'no-go' areas identified in EIA and Specialist Studies

### 5.4 Access roads

**Impact management outcome:** Minimise impact to the environment through the planned and restricted movement of vehicles on site.

Impact Management Actions	Implementation			Monitoring		
	Responsible person	Method of implementation	Timeframe for implementation	Responsible person	Frequency	Evidence of compliance

<ul style="list-style-type: none"> <li>- An access agreement must be formalised and signed by the DPM, Contractor and landowner before commencing with the activities;</li> <li>- All private roads used for access to the servitude must be maintained and upon completion of the works, be left in at least the original condition</li> <li>- All contractors must be made aware of all these access routes.</li> <li>- Any access route deviation from that in the written agreement must be closed and re-vegetated immediately, at the contractor's expense;</li> <li>- Maximum use of both existing servitudes and existing roads must be made to minimize further disturbance through the development of new roads;</li> <li>- In circumstances where private roads must be used, the condition of the said roads must be recorded in accordance with <b>section 4.9: photographic record</b>; prior to use and the condition thereof agreed by the landowner, the DPM, and the contractor;</li> <li>- Access roads in flattish areas must follow fence lines and tree belts to avoid fragmentation of vegetated areas or croplands</li> <li>- Access roads must only be developed on a pre-planned and approved roads.</li> </ul>	Contractor	Implementation of mitigation measures.	Ongoing	ECO	Monthly	Signed access Agreements and maintenance of access roads.
---	------------	--	---------	-----	---------	---

### 5.5 Fencing and Gate installation

**Impact management outcome:** Minimise impact to the environment and ensure safe and controlled access to the site through the erection of fencing and gates where required.

Impact Management Actions	Implementation			Monitoring		
	Responsible person	Method of implementation	Timeframe for implementation	Responsible person	Frequency	Evidence of compliance
<ul style="list-style-type: none"> <li>- Use existing gates provided to gain access to all parts of the area authorised for development, where possible;</li> <li>- Existing and new gates to be recorded and documented in accordance with <b>section 4.9: photographic record</b>;</li> <li>- All gates must be fitted with locks and be kept locked at all times during the development phase, unless otherwise agreed with the landowner;</li> <li>- At points where the line crosses a fence in which there is no suitable gate within the extent of the line servitude, on the instruction of the DPM, a gate must be installed at the approval of the landowner;</li> <li>- Care must be taken that the gates must be so erected that there is a gap of no more than 100 mm between the bottom of the gate and the ground;</li> <li>- Where gates are installed in jackal proof fencing, a suitable reinforced concrete sill must be provided beneath the gate;</li> <li>- Original tension must be maintained in the fence wires;</li> <li>- All gates installed in electrified fencing must be re-electrified;</li> <li>- All demarcation fencing and barriers must be maintained in good working order for the duration of the development activities;</li> </ul>	Contractor and Applicant	Implementation of the mitigation measures	Ongoing	ECO	Monthly	Site observation; public complaints register

<ul style="list-style-type: none"> <li>- Fencing must be erected around the camp, batching plants, hazardous storage areas, and all designated access restricted areas, where applicable;</li> <li>- Any temporary fencing to restrict the movement of life-stock must only be erected with the permission of the land owner.</li> <li>- All fencing must be developed of high quality material bearing the SABS mark;</li> <li>- The use of razor wire as fencing must be avoided;</li> <li>- Fenced areas with gate access must remain locked after hours, during weekends and on holidays if staff is away from site. Site security will be required at all times;</li> <li>- On completion of the development phase all temporary fences are to be removed;</li> <li>- The contractor must ensure that all fence uprights are appropriately removed, ensuring that no uprights are cut at ground level but rather removed completely.</li> </ul>						
--	--	--	--	--	--	--

### 5.6 Water Supply Management

**Impact management outcome:** Undertake responsible water usage.

Impact Management Actions	Implementation			Monitoring		
	Responsible person	Method of implementation	Timeframe for implementation	Responsible person	Frequency	Evidence of compliance
<ul style="list-style-type: none"> <li>- All abstraction points or bore holes must be registered with the DWS and suitable water meters installed to ensure that the abstracted volumes are measured on a daily basis;</li> <li>- The Contractor must ensure the following:</li> </ul>	Contractor and Applicant	Application to DWS where applicable. Implementation of mitigation measures	Construction	ECO	Monthly	Proof of water source used; submission of above proof to DWS.



<ul style="list-style-type: none"> <li>a. The vehicle abstracting water from a river does not enter or cross it and does not operate from within the river;</li> <li>b. No damage occurs to the river bed or banks and that the abstraction of water does not entail stream diversion activities; and</li> <li>c. All reasonable measures to limit pollution or sedimentation of the downstream watercourse are implemented.</li> </ul> <ul style="list-style-type: none"> <li>- Ensure water conservation is being practiced by:             <ul style="list-style-type: none"> <li>a. Minimising water use during cleaning of equipment;</li> <li>b. Undertaking regular audits of water systems; and</li> <li>c. Including a discussion on water usage and conservation during environmental awareness training.</li> <li>d. The use of grey water is encouraged.</li> </ul> </li> </ul>						
---	--	--	--	--	--	--

### 5.7 Storm and waste water management

**Impact management outcome:** Impacts to the environment caused by storm water and wastewater discharges during construction are avoided.

Impact Management Actions	Implementation			Monitoring		
	Responsible person	Method of implementation	Timeframe for implementation	Responsible person	Frequency	Evidence of compliance
<ul style="list-style-type: none"> <li>- Runoff from the cement/ concrete batching areas must be strictly controlled, and contaminated water must be collected, stored and either treated or disposed of off-site, at a location approved by the project manager;</li> <li>- All spillage of oil onto concrete surfaces must be controlled by the use of an approved absorbent material and the used absorbent material disposed of at an appropriate waste disposal facility;</li> </ul>	Contractor	Employ methods to prevent water pollution	Construction	ECO	Weekly	Inspection of areas where construction takes place near watercourses

<ul style="list-style-type: none"> <li>- Natural storm water runoff not contaminated during the development and clean water can be discharged directly to watercourses and water bodies, subject to the Project Manager's approval and support by the ECO;</li> <li>- Water that has been contaminated with suspended solids, such as soils and silt, may be released into watercourses or water bodies only once all suspended solids have been removed from the water by settling out these solids in settlement ponds. The release of settled water back into the environment must be subject to the Project Manager's approval and support by the ECO.</li> </ul>					
---	--	--	--	--	--

**5.8 Solid and hazardous waste management**

**Impact management outcome:** Wastes are appropriately stored, handled and safely disposed of at a recognised waste facility.

Impact Management Actions	Implementation			Monitoring		
	Responsible person	Method of implementation	Timeframe for implementation	Responsible person	Frequency	Evidence of compliance
<ul style="list-style-type: none"> <li>- All measures regarding waste management must be undertaken using an integrated waste management approach;</li> <li>- Sufficient, covered waste collection bins (scavenger and weatherproof) must be provided;</li> <li>- A suitably positioned and clearly demarcated waste collection site must be identified and provided;</li> <li>- The waste collection site must be maintained in a clean and orderly manner;</li> </ul>	Contractor	Following good waste management practices outlined in approved method Statement	Construction	ECO	Weekly	Waste Safe disposal slips; Service Level Agreements

<ul style="list-style-type: none"> <li>- Waste must be segregated into separate bins and clearly marked for each waste type for recycling and safe disposal;</li> <li>- Staff must be trained in waste segregation;</li> <li>- Bins must be emptied regularly;</li> <li>- General waste produced onsite must be disposed of at registered waste disposal sites/ recycling company;</li> <li>- Hazardous waste must be disposed of at a registered waste disposal site;</li> <li>- Certificates of safe disposal for general, hazardous and recycled waste must be maintained.</li> </ul>						
--	--	--	--	--	--	--

**5.9 Protection of watercourses and estuaries**

**Impact management outcome:** Pollution and contamination of the watercourse environment and or estuary erosion are prevented.

Impact Management Actions	Implementation			Monitoring		
	Responsible person	Method of implementation	Timeframe for implementation	Responsible person	Frequency	Evidence of compliance
<ul style="list-style-type: none"> <li>- All watercourses must be protected from direct or indirect spills of pollutants such as solid waste, sewage, cement, oils, fuels, chemicals, aggregate tailings, wash and contaminated water or organic material resulting from the Contractor's activities;</li> <li>- In the event of a spill, prompt action must be taken to clear the polluted or affected areas;</li> <li>- Where possible, no development equipment must traverse any seasonal or permanent wetland</li> </ul>	Contractor	Method statements; Stormwater Management Plan;	Construction	ECO	Weekly	Method Statement compliance

<ul style="list-style-type: none"> <li>- No return flow into the estuaries must be allowed and no disturbance of the Estuarine functional Zone should occur;</li> <li>- Development of permanent watercourse or estuary crossing must only be undertaken where no alternative access to tower position is available;</li> <li>- There must not be any impact on the long term morphological dynamics of watercourses or estuaries;</li> <li>- Existing crossing points must be favored over the creation of new crossings (including temporary access)</li> <li>- When working in or near any watercourse or estuary, the following environmental controls and consideration must be taken:             <ul style="list-style-type: none"> <li>a) Water levels during the period of construction; No altering of the bed, banks, course or characteristics of a watercourse</li> <li>b) During the execution of the works, appropriate measures to prevent pollution and contamination of the riparian environment must be implemented e.g. including ensuring that construction equipment is well maintained;</li> <li>c) Where earthwork is being undertaken in close proximity to any watercourse, slopes must be stabilised using suitable materials, i.e. sandbags or geotextile fabric, to prevent sand and rock from entering the channel; and</li> <li>d) Appropriate rehabilitation and re-vegetation measures for the watercourse banks must be implemented timeously. In this regard, the banks should be appropriately and incrementally stabilised as soon as development allows.</li> </ul> </li> </ul>						
---	--	--	--	--	--	--

### 5.10 Vegetation clearing

**Impact management outcome:** Vegetation clearing is restricted to the authorised development footprint of the proposed infrastructure.

Impact Management Actions	Implementation			Monitoring		
	Responsible person	Method of implementation	Timeframe for implementation	Responsible person	Frequency	Evidence of compliance
<p><b>General:</b></p> <ul style="list-style-type: none"> <li>- Indigenous vegetation which does not interfere with the development must be left undisturbed;</li> <li>- Protected or endangered species may occur on or near the development site. Special care should be taken not to damage such species;</li> <li>- Search, rescue and replanting of all protected and endangered species likely to be damaged during project development must be identified by the relevant specialist and completed prior to any development or clearing;</li> <li>- Permits for removal must be obtained from the relevant CA prior to the cutting or clearing of the affected species, and they must be filed;</li> <li>- The Environmental Audit Report must confirm that all identified species have been rescued and replanted and that the location of replanting is compliant with conditions of approvals;</li> <li>- Trees felled due to construction must be documented and form part of the Environmental Audit Report;</li> <li>- Rivers and watercourses must be kept clear of felled trees, vegetation cuttings and debris;</li> </ul>	Contractor and Applicant	Specialist recommendations; Method statement; Search and Rescue Plan; Alien vegetation removal Plan (approved plans and strategies used by Eskom), site awareness	Pre-Construction and Construction and Operation	ECO	Pre-Construction and weekly during construction	Compliance to method statements and Search and Rescue Plan; Alien vegetation removal Plan. approved plans and strategies used by Eskom)

<ul style="list-style-type: none"> <li>- Only a registered pest control operator may apply herbicides on a commercial basis and commercial application must be carried out under the supervision of a registered pest control operator, supervision of a registered pest control operator or is appropriately trained;</li> <li>- A daily register must be kept of all relevant details of herbicide usage;</li> <li>- No herbicides must be used in estuaries;</li> <li>- All protected species and sensitive vegetation not removed must be clearly marked and such areas fenced off in accordance to <b>Section 5.3: Access restricted areas.</b> Alien invasive vegetation must be removed and disposed of at a licensed waste management facility.</li> </ul>						
--	--	--	--	--	--	--

**5.11 Protection of fauna**

**Impact management outcome:** Disturbance to fauna is minimised.

Impact Management Actions	Implementation			Monitoring		
	Responsible person	Method of implementation	Timeframe for implementation	Responsible person	Frequency	Evidence of compliance
<ul style="list-style-type: none"> <li>- No interference with livestock must occur without the landowner's written consent and with the landowner or a person representing the landowner being present;</li> <li>- The breeding sites of raptors and other wild birds species must be taken into consideration during the planning of the development programme;</li> </ul>	Contractor	Method statement and adherence to exclusion/ no-go zones. Site awareness	Construction	ECO	Weekly	Public complaints register; adherence to exclusion/ no-go zones and method statements

<ul style="list-style-type: none"> <li>- Breeding sites must be kept intact and disturbance to breeding birds must be avoided. Special care must be taken where nestlings or fledglings are present;</li> <li>- Special recommendations of the avian specialist must be adhered to at all times to prevent unnecessary disturbance of birds;</li> <li>- No poaching must be tolerated under any circumstances. All animal dens in close proximity to the works areas must be marked as Access restricted areas;</li> <li>- No deliberate or intentional killing of fauna is allowed;</li> <li>- In areas where snakes are abundant, snake deterrents to be deployed on the pylons to prevent snakes climbing up, being electrocuted and causing power outages; and</li> <li>- No Threatened or Protected species (ToPs) and/or protected fauna as listed according NEMBA (Act No. 10 of 2004) and relevant provincial ordinances may be removed and/or relocated without appropriate authorisations/permits.</li> </ul>						
---	--	--	--	--	--	--

**5.12 Protection of heritage resources**

**Impact management outcome:** Impact to heritage resources is minimised.

Impact Management Actions	Implementation			Monitoring		
	Responsible person	Method of implementation	Timeframe for implementation	Responsible person	Frequency	Evidence of compliance
<ul style="list-style-type: none"> <li>- Identify, demarcate and prevent impact to all known sensitive heritage features on site in accordance with the No- Go procedure in <b>Section 5.3: Access restricted areas</b>;</li> <li>- Carry out general monitoring of excavations for potential fossils, artefacts and material of heritage importance;</li> <li>- All work must cease immediately, if any human remains and/or</li> </ul>	Contractor	Method Statement; Heritage management plan	Preconstruction and construction	ECO	Weekly	Monitoring of construction areas, adherence to management plan if chance finds

<p>other archaeological, palaeontological and historical material are uncovered. Such material, if exposed, must be reported to the nearest museum, archaeologist/ palaeontologist (or the South African Police Services), so that a systematic and professional investigation can be undertaken. Sufficient time must be allowed to remove/collect such material before development recommences.</p>					found.
---	--	--	--	--	--------



### 5.13 Safety of the public

**Impact management outcome:** All precautions are taken to minimise the risk of injury, harm or complaints.

Impact Management Actions	Implementation			Monitoring		
	Responsible person	Method of implementation	Timeframe for implementation	Responsible person	Frequency	Evidence of compliance
<ul style="list-style-type: none"> <li>- Identify fire hazards, demarcate and restrict public access to these areas as well as notify the local authority of any potential threats e.g. large brush stockpiles, fuels etc.;</li> <li>- All unattended open excavations must be adequately fenced or demarcated;</li> <li>- Adequate protective measures must be implemented to prevent unauthorised access to and climbing of partly constructed towers and protective scaffolding;</li> <li>- Ensure structures vulnerable to high winds are secured;</li> <li>- Maintain an incidents and complaints register in which all incidents or complaints involving the public are logged.</li> </ul>	Contractor	Landowner agreements; Method Statement	Construction	ECO	Weekly	Site works barricaded, safe working site maintained, public complaints register.

**5.14 Sanitation**

**Impact management outcome:** Clean and well maintained toilet facilities are available to all staff in an effort to minimise the risk of disease and impact to the environment.

Impact Management Actions	Implementation			Monitoring		
	Responsible person	Method of implementation	Timeframe for implementation	Responsible person	Frequency	Evidence of compliance
<ul style="list-style-type: none"> <li>- Mobile chemical toilets are installed onsite if no other ablution facilities are available;</li> <li>- The use of ablution facilities and or mobile toilets must be used at all times and no indiscriminate use of the veld for the purposes of ablutions must be permitted under any circumstances;</li> <li>- Where mobile chemical toilets are required, the following must be ensured:               <ul style="list-style-type: none"> <li>a) Toilets are located no closer than 100 m to any watercourse or water body;</li> <li>b) Toilets are secured to the ground to prevent them from toppling due to wind or any other cause;</li> <li>c) No spillage occurs when the toilets are cleaned or emptied and the contents are managed in accordance with the EMPr;</li> <li>d) Toilets have an external closing mechanism and are closed and secured from the outside when not in use to prevent toilet paper from being blown out;</li> </ul> </li> </ul>	Contractor	Service level agreement with Service provider; Method statement; site awareness	Construction	ECO	Weekly	Service level agreement with Service provider, proof of safe disposal of waste.

<p>e) Toilets are emptied before long weekends and workers holidays, and must be locked after working hours;</p> <p>f) Toilets are serviced regularly and the ECO must inspect toilets to ensure compliance to health standards;</p> <ul style="list-style-type: none"> <li>- A copy of the waste disposal certificates must be maintained.</li> </ul>						
--	--	--	--	--	--	--

**5.15 Prevention of disease**

**Impact Management outcome:** All necessary precautions linked to the spread of disease are taken.

Impact Management Actions	Implementation			Monitoring		
	Responsible person	Method of implementation	Timeframe for implementation	Responsible person	Frequency	Evidence of compliance
<ul style="list-style-type: none"> <li>- Undertake environmentally-friendly pest control in the camp area;</li> <li>- Ensure that the workforce is sensitised to the effects of sexually transmitted diseases, especially HIV AIDS;</li> <li>- The Contractor must ensure that information posters on AIDS are displayed in the Contractor Camp area;</li> <li>- Information and education relating to sexually transmitted diseases to be made available to both construction workers and local community, where applicable;</li> <li>- Free condoms must be made available to all staff on site at central points;</li> <li>- Medical support must be made available;</li> <li>- Provide access to Voluntary HIV Testing and Counselling Services.</li> </ul>	Contractor	Method statement, awareness training.	Construction	ECO	Monthly	Method statement, proof of awareness training.

### 5.16 Emergency procedures

**Impact management outcome:** Emergency procedures are in place to enable a rapid and effective response to all types of environmental emergencies.

Impact Management Actions	Implementation			Monitoring		
	Responsible person	Method of implementation	Timeframe for implementation	Responsible person	Frequency	Evidence of compliance
<ul style="list-style-type: none"> <li>- Compile an Emergency Response Action Plan (ERAP) prior to the commencement of the proposed project;</li> <li>- The Emergency Plan must deal with accidents, potential spillages and fires in line with relevant legislation;</li> <li>- All staff must be made aware of emergency procedures as part of environmental awareness training;</li> <li>- The relevant local authority must be made aware of a fire as soon as it starts;</li> <li>- In the event of emergency necessary mitigation measures to contain the spill or leak must be implemented (see <b>Hazardous Substances section 5.17</b>).</li> </ul>	Contractor	Environmental Emergency Response Action Plan	Construction	ECO	Monthly	Adherence/compliance to ERAP

### 5.17 Hazardous substances

**Impact management outcome:** Safe storage, handling, use and disposal of hazardous substances.

Impact Management Actions	Implementation	Monitoring
---------------------------	----------------	------------

	Responsible person	Method of implementation	Timeframe for implementation	Responsible person	Frequency	Evidence of compliance
<ul style="list-style-type: none"> <li>- The use and storage of hazardous substances to be minimised and non-hazardous and non-toxic alternatives substituted where possible;</li> <li>- All hazardous substances must be stored in suitable containers as defined in the Method Statement;</li> <li>- Containers must be clearly marked to indicate contents, quantities and safety requirements;</li> <li>- All storage areas must be bunded. The bunded area must be of sufficient capacity to contain a spill / leak from the stored containers;</li> <li>- Bunded areas to be suitably lined with a SABS approved liner;</li> <li>- An Alphabetical Hazardous Chemical Substance (HCS) control sheet must be drawn up and kept up to date on a continuous basis;</li> <li>- All hazardous chemicals that will be used on site must have Material Safety Data Sheets (MSDS);</li> <li>- All employees working with HCS must be trained in the safe use of the substance and according to the safety data sheet;</li> <li>- Employees handling hazardous substances / materials must be aware of the potential impacts and follow appropriate safety measures. Appropriate personal protective equipment must be made available;</li> <li>- The Contractor must ensure that diesel and other liquid fuel, oil and hydraulic fluid is stored in appropriate storage tanks or in bowsers;</li> <li>- The tanks/ bowsers must be situated on a smooth impermeable surface (concrete) with a permanent bund. The impermeable lining must extend to the crest of the bund and the volume inside the bund must be 130% of the total</li> </ul>	Contractor	Method Statement, OHS requirements; adequate and responsible use and storage of Hazardous Substances, Hazardous Substances storage register.	Construction	ECO	Weekly	Hazardous Substance Storage Register, MSDS, Method Statement.

<p>capacity of all the storage tanks/ bowsers (110% statutory requirement plus an allowance for rainfall);</p> <ul style="list-style-type: none"> <li>- The floor of the bund must be sloped, draining to an oil separator;</li> <li>- Provision must be made for refueling at the storage area by protecting the soil with an impermeable groundcover. Where dispensing equipment is used, a drip tray must be used to ensure small spills are contained;</li> <li>- All empty externally dirty drums must be stored on a drip tray or within a bunded area;</li> <li>- No unauthorised access into the hazardous substances storage areas must be permitted;</li> <li>- No smoking must be allowed within the vicinity of the hazardous storage areas;</li> <li>- Adequate fire-fighting equipment must be made available at all hazardous storage areas;</li> <li>- Where refueling away from the dedicated refueling station is required, a mobile refueling unit must be used. Appropriate ground protection such as drip trays must be used;</li> <li>- An appropriately sized spill kit kept onsite relevant to the scale of the activity/s involving the use of hazardous substance must be available at all times;</li> <li>- The responsible operator must have the required training to make use of the spill kit in emergency situations;</li> <li>- An appropriate number of spill kits must be available and must be located in all areas where activities are being undertaken;</li> <li>- In the event of a spill, contaminated soil must be collected in containers and stored in a central location and disposed of according to the National Environmental Management: Waste Act 59 of 2008. Refer to <b>Section 5.7</b> for procedures</li> </ul>						
---	--	--	--	--	--	--

concerning **storm and waste water management** and **5.8** for **solid and hazardous waste management**.

### 5.18 Workshop, equipment maintenance and storage

**Impact management outcome:** Soil, surface water and groundwater contamination is minimised.

Impact Management Actions	Implementation			Monitoring		
	Responsible person	Method of implementation	Timeframe for implementation	Responsible person	Frequency	Evidence of compliance
<ul style="list-style-type: none"> <li>- Where possible and practical all maintenance of vehicles and equipment must take place in the workshop area;</li> <li>- During servicing of vehicles or equipment, especially where emergency repairs are effected outside the workshop area, a suitable drip tray must be used to prevent spills onto the soil. The relevant local authority must be made aware of a fire as soon as it starts;</li> <li>- Leaking equipment must be repaired immediately or be removed from site to facilitate repair;</li> <li>- Workshop areas must be monitored for oil and fuel spills;</li> <li>- Appropriately sized spill kit kept onsite relevant to the scale of the activity taking place must be available;</li> <li>- The workshop area must have a bunded concrete slab that is sloped to facilitate runoff into a collection sump or suitable oil / water separator where maintenance work on vehicles and equipment can be performed;</li> <li>- Water drainage from the workshop must be contained and managed in accordance Section <b>5.7: Storm and waste water management</b>.</li> </ul>	Contractor	Method Statement, OHS requirements; Hazardous Substances storage register, vehicle daily checklist, vehicle service register.	Construction	ECO	Weekly	Method Statement, Hazardous Substances storage register, vehicle daily checklist, vehicle service register.

### 5.19 Batching plants

**Impact management outcome:** Minimise spillages and contamination of soil, surface water and groundwater.

Impact Management Actions	Implementation			Monitoring		
	Responsible person	Method of implementation	Timeframe for implementation	Responsible person	Frequency	Evidence of compliance
<ul style="list-style-type: none"> <li>- Concrete mixing must be carried out on an impermeable surface;</li> <li>- Batching plants areas must be fitted with a containment facility for the collection of cement laden water.</li> <li>- Dirty water from the batching plant must be contained to prevent soil and groundwater contamination</li> <li>- Bagged cement must be stored in an appropriate facility and at least 10 m away from any water courses, gullies and drains;</li> <li>- A washout facility must be provided for washing of concrete associated equipment. Water used for washing must be restricted;</li> <li>- Hardened concrete from the washout facility or concrete mixer can either be reused or disposed of at an appropriate licenced disposal facility;</li> <li>- Empty cement bags must be secured with adequate binding material if these will be temporarily stored on site;</li> <li>- Sand and aggregates containing cement must be kept damp to prevent the generation of dust (Refer to <b>Section 5.20: Dust emissions</b>)</li> <li>- Any excess sand, stone and cement must be removed or reused from site on completion of construction period and disposed at a registered disposal facility;</li> </ul>	Contractor	Method statement	Construction	ECO	Weekly	Compliance to mitigation and method statement



<ul style="list-style-type: none"> <li>– Temporary fencing must be erected around batching plants in accordance with Section <b>5.5: Fencing and gate installation</b>.</li> </ul>						
--	--	--	--	--	--	--

**5.20 Dust emissions**

**Impact management outcome:** Dust prevention measures are applied to minimise the generation of dust.

Impact Management Actions	Implementation			Monitoring		
	Responsible person	Method of implementation	Timeframe for implementation	Responsible person	Frequency	Evidence of compliance
<ul style="list-style-type: none"> <li>– Take all reasonable measures to minimise the generation of dust as a result of project development activities to the satisfaction of the ECO;</li> <li>– Removal of vegetation must be avoided until such time as soil stripping is required and similarly exposed surfaces must be re-vegetated or stabilised as soon as is practically possible;</li> <li>– Excavation, handling and transport of erodible materials must be avoided under high wind conditions or when a visible dust plume is present;</li> <li>– During high wind conditions, the ECO must evaluate the situation and make recommendations as to whether dust-damping measures are adequate, or whether working will cease altogether until the wind speed drops to an acceptable level;</li> <li>– Where possible, soil stockpiles must be located in sheltered areas where they are not exposed to the erosive effects of the wind;</li> </ul>	Contractor	Method Statement, Vehicle Speed limit, dust suppression.	Construction	ECO	Monthly	Site observations, dust suppression register.

<ul style="list-style-type: none"> <li>- Where erosion of stockpiles becomes a problem, erosion control measures must be implemented at the discretion of the ECO;</li> <li>- Vehicle speeds must not exceed 40 km/h along dust roads or 20 km/h when traversing unconsolidated and non-vegetated areas;</li> <li>- Straw stabilisation must be applied at a rate of one bale/10 m<sup>2</sup> and harrowed into the top 100 mm of top material, for all completed earthworks;</li> <li>- For significant areas of excavation or exposed ground, dust suppression measures must be used to minimise the spread of dust.</li> </ul>					
--	--	--	--	--	--

### 5.21 Blasting

**Impact management outcome:** Impact to the environment is minimised through a safe blasting practice.

Impact Management Actions	Implementation			Monitoring		
	Responsible person	Method of implementation	Timeframe for implementation	Responsible person	Frequency	Evidence of compliance
<ul style="list-style-type: none"> <li>- Any blasting activity must be conducted by a suitably licensed blasting contractor; and</li> <li>- Notification of surrounding landowners, emergency services site personnel of blasting activity 24 hours prior to such activity taking place on Site.</li> </ul>	Contractor	Relevant legislation and regulation.	Construction	ECO	Monthly	Public complaints register; proof of registration of blasting contractor.

## 5.22 Noise

**Impact Management outcome:** Prevent unnecessary noise to the environment by ensuring that noise from development activity is mitigated.

Impact Management Actions	Implementation			Monitoring		
	Responsible person	Method of implementation	Timeframe for implementation	Responsible person	Frequency	Evidence of compliance
<ul style="list-style-type: none"> <li>- The Contractor must keep noise level within acceptable limits, Restrict the use of sound amplification equipment for communication and emergency only;</li> <li>- All vehicles and machinery must be fitted with appropriate silencing technology and must be properly maintained;</li> <li>- Any complaints received by the Contractor regarding noise must be recorded and communicated. Where possible or applicable, provide transport to and from the site on a daily basis for construction workers;</li> <li>- Develop a Code of Conduct for the construction phase in terms of behaviour of construction staff. Operating hours as determined by the environmental authorisation are adhered to during the development phase. Where not defined, it must be ensured that development activities must still meet the impact management outcome related to noise management.</li> </ul>	Contractor	Restriction of site hours to working hours Monday to Friday	Construction	ECO	Monthly	Public Complaints Register

### 5.23 Fire prevention

**Impact management outcome:** Prevention of uncontrollable fires.

Impact Management Actions	Implementation			Monitoring		
	Responsible person	Method of implementation	Timeframe for implementation	Responsible person	Frequency	Evidence of compliance
<ul style="list-style-type: none"> <li>- Designate smoking areas where the fire hazard could be regarded as insignificant;</li> <li>- Firefighting equipment must be available on all vehicles located on site;</li> <li>- The local Fire Protection Agency (FPA) must be informed of construction activities;</li> <li>- Contact numbers for the FPA and emergency services must be communicated in environmental awareness training and displayed at a central location on site;</li> <li>- Two way swop of contact details between ECO and FPA.</li> </ul>	Contractor	Emergency Response Action Plan; Method Statement	Construction	ECO	Monthly	Public complaints register; compliance to ERAP

### 5.24 Stockpiling and stockpile areas

**Impact management outcome:** Reduce erosion and sedimentation as a result of stockpiling.

Impact Management Actions	Implementation			Monitoring		
	Responsible person	Method of implementation	Timeframe for implementation	Responsible person	Frequency	Evidence of compliance

<ul style="list-style-type: none"> <li>- All material that is excavated during the project development phase (either during piling (if required) or earthworks) must be stored appropriately on site in order to minimise impacts to watercourses, watercourses and water bodies;</li> <li>- All stockpiled material must be maintained and kept clear of weeds and alien vegetation growth by undertaking regular weeding and control methods;</li> <li>- Topsoil stockpiles must not exceed 2 m in height;</li> <li>- During periods of strong winds and heavy rain, the stockpiles must be covered with appropriate material (e.g. cloth, tarpaulin etc.);</li> <li>- Where possible, sandbags (or similar) must be placed at the bases of the stockpiled material in order to prevent erosion of the material.</li> </ul>	Contractor	Method statement	Construction	ECO	Monthly	Method Statement and site observations
---	------------	------------------	--------------	-----	---------	--

### 5.25 Civil works

**Impact management outcome:** Impact to the environment minimised during civil works to create the substation terrace.

Impact Management Actions	Implementation			Monitoring		
	Responsible person	Method of implementation	Timeframe for implementation	Responsible person	Frequency	Evidence of compliance
<ul style="list-style-type: none"> <li>- Where terracing is required, topsoil must be collected and retained for the purpose of re-use later to rehabilitate disturbed areas not covered by yard stone;</li> <li>- Areas to be rehabilitated include terrace embankments and areas outside the high voltage yards;</li> <li>- Where required, all sloped areas must be stabilised to ensure proper rehabilitation is effected and erosion is controlled;</li> </ul>	Applicant	Findings of the EIA Specialist Studies	Pre-Construction	ECO	Once off	Final pegging of tower positions.

<ul style="list-style-type: none"> <li>- These areas can be stabilised using design structures or vegetation as specified in the design to prevent erosion of embankments. The contract design specifications must be adhered to and implemented strictly;</li> <li>- Rehabilitation of the disturbed areas must be managed in accordance with <b>Section 5.35: Landscaping and rehabilitation</b>;</li> <li>- All excess spoil generated during terracing activities must be disposed of in an appropriate manner and at a recognised landfill site; and</li> <li>- Spoil can however be used for landscaping purposes and must be covered with a layer of 150 mm topsoil for rehabilitation purposes.</li> </ul>						
--	--	--	--	--	--	--

#### 5.26 Excavation of foundation, cable trenching and drainage systems

**Impact management outcome:** No environmental degradation occurs as a result of excavation of foundation, cable trenching and drainage systems.

Impact Management Actions	Implementation			Monitoring		
	Responsible person	Method of implementation	Timeframe for implementation	Responsible person	Frequency	Evidence of compliance
<ul style="list-style-type: none"> <li>- All excess spoil generated during foundation excavation must be disposed of in an appropriate manner and at a licensed landfill site, if not used for backfilling purposes;</li> <li>- Spoil can however be used for landscaping purposes and must be covered with a layer of 150 mm topsoil for rehabilitation purposes;</li> </ul>	Contractor	Method Statement and Engineering Drawings	Construction	ECO	Weekly	Adherence to method statements

<ul style="list-style-type: none"> <li>- Management of equipment for excavation purposes must be undertaken in accordance with <b>Section 5.18: Workshop, equipment maintenance and storage</b>; and</li> <li>- Hazardous substances spills from equipment must be managed in accordance with <b>Section 5.17: Hazardous substances</b>.</li> </ul>						
---	--	--	--	--	--	--

**5.27 Installation of foundations, cable trenching and drainage systems**

**Impact management outcome:** No environmental degradation occurs during the installation of foundation, cable trenching and drainage system.

Impact Management Actions	Implementation			Monitoring		
	Responsible person	Method of implementation	Timeframe for implementation	Responsible person	Frequency	Evidence of compliance
<ul style="list-style-type: none"> <li>- Batching of cement to be undertaken in accordance with <b>Section 5.19: Batching plants</b>; and</li> <li>- Residual solid waste must be disposed of in accordance with <b>Section 5.8: Solid waste and hazardous management</b>.</li> </ul>	Contractor	Method Statement and Engineering Drawings	Construction	ECO	Weekly	Adherence to method statements

**5.28 Installation of equipment (circuit breakers, current Transformers, Isolators, Insulators, surge arresters, voltage transformers, earth switches)**

**Impact management outcome:** No environmental degradation occurs as a result of installation of equipment.

Impact Management Actions	Implementation			Monitoring		
	Responsible person	Method of implementation	Timeframe for implementation	Responsible person	Frequency	Evidence of compliance

<ul style="list-style-type: none"> <li>- Management of dust must be conducted in accordance with Section <b>5.20: Dust emissions</b>;</li> <li>- Management of equipment used for installation must be conducted in accordance with Section <b>5.18: Workshop, equipment maintenance and storage</b>;</li> <li>- Management hazardous substances and any associated spills must be conducted in accordance with Section <b>5.17: Hazardous substances</b>; and</li> <li>- Residual solid waste must be recycled or disposed of in accordance with <b>Section 5.8: Solid waste and hazardous management</b>.</li> </ul>	Contractor	Method Statement and Engineering Drawings	Construction	ECO	Weekly	Adherence to method statements
--	------------	---	--------------	-----	--------	--------------------------------

### 5.29 Steelwork Assembly and Erection

**Impact management outcome:** No environmental degradation occurs as a result of steelwork assembly and erection.

Impact Management Actions	Implementation			Monitoring		
	Responsible person	Method of implementation	Timeframe for implementation	Responsible person	Frequency	Evidence of compliance
<ul style="list-style-type: none"> <li>- During assembly, care must be taken to ensure that no wasted/unused materials are left on site e.g. bolts and nuts</li> <li>- Emergency repairs due to breakages of equipment must be managed in accordance with <b>Section 5.18: Workshop, equipment maintenance and storage</b> and <b>Section 5.16: Emergency procedures</b>.</li> </ul>	Contractor	Method Statement and Engineering Drawings	Construction	ECO	Weekly	Adherence to method statements



### 5.30 Cabling and Stringing

**Impact management outcome:** No environmental degradation occurs as a result of stringing.

Impact Management Actions	Implementation			Monitoring		
	Responsible person	Method of implementation	Timeframe for implementation	Responsible person	Frequency	Evidence of compliance
<ul style="list-style-type: none"> <li>- Residual solid waste (off cuts etc.) shall be recycled or disposed of in accordance with <b>Section 6.8: Solid waste and hazardous Management;</b></li> <li>- Management of equipment used for installation shall be conducted in accordance with <b>Section 5.18: Workshop, equipment maintenance and storage;</b></li> <li>- Management hazardous substances and any associated spills shall be conducted in accordance with <b>Section 5.17: Hazardous substances.</b></li> </ul>	Contractor	Method Statement, adherence to exclusion zones	Construction	ECO	Weekly	Site observations

### 5.31 Testing and Commissioning (all equipment testing, earthing system, system integration)

**Impact management outcome:** No environmental degradation occurs as a result of Testing and Commissioning.

Impact Management Actions	Implementation			Monitoring		
	Responsible person	Method of implementation	Timeframe for implementation	Responsible person	Frequency	Evidence of compliance

<ul style="list-style-type: none"> <li>Residual solid waste must be recycled or disposed of in accordance with <b>Section 5.8: Solid waste and hazardous management.</b></li> </ul>	Contractor	Method Statement	Construction	ECO	Weekly	Site observations
---	------------	------------------	--------------	-----	--------	-------------------

### 5.32 Socio-economic

**Impact management outcome:** enhanced socio-economic development.

Impact Management Actions	Implementation			Monitoring		
	Responsible person	Method of implementation	Timeframe for implementation	Responsible person	Frequency	Evidence of compliance
<ul style="list-style-type: none"> <li>Develop and implement communication strategies to facilitate public participation;</li> <li>Develop and implement a collaborative and constructive approach to conflict resolution as part of the external stakeholder engagement process;</li> <li>Sustain continuous communication and liaison with neighboring owners and residents</li> <li>Create work and training opportunities for local stakeholders; and</li> <li>Where feasible, no workers, with the exception of security personnel, must be permitted to stay over-night on the site. This would reduce the risk to local farmers.</li> </ul>	Contractor	Landowner agreements; Method Statement	Construction	ECO	Weekly	Site works barricaded, safe working site maintained, public complaints register.

### 5.33 Temporary closure of site

**Impact management outcome:** Minimise the risk of environmental impact during periods of site closure greater than five days.

Impact Management Actions	Implementation			Monitoring		
	Responsible person	Method of implementation	Timeframe for implementation	Responsible person	Frequency	Evidence of compliance
<ul style="list-style-type: none"> <li>- Bunds must be emptied (where applicable) and need to be undertaken in accordance with the impact management actions included in <b>sections 5.17: Hazardous substances and 5.18: Workshop, equipment maintenance and storage;</b></li> <li>- Hazardous storage areas must be well ventilated;</li> <li>- Fire extinguishers must be serviced and accessible. Service records to be filed and audited at last service;</li> <li>- Emergency and contact details displayed must be displayed;</li> <li>- Security personnel must be briefed and have the facilities to contact or be contacted by relevant management and emergency personnel;</li> <li>- Night hazards such as reflectors, lighting, traffic signage etc. must have been checked;</li> <li>- Fire hazards identified and the local authority must have been notified of any potential threats e.g. large brush stockpiles, fuels etc.;</li> <li>- Structures vulnerable to high winds must be secured;</li> <li>- Wind and dust mitigation must be implemented;</li> <li>- Cement and materials stores must have been secured;</li> <li>- Toilets must have been emptied and secured;</li> <li>- Refuse bins must have been emptied and secured;</li> <li>- Drip trays must have been emptied and secured.</li> </ul>	Contractor	Method Statement	Construction – when applicable	ECO	Monthly – when applicable	Adherence to method statements

**5.34 Dismantling of old equipment**

**Impact management outcome:** Impact to the environment to be minimised during the dismantling, storage and disposal of old equipment commissioning.

Impact Management Actions	Implementation			Monitoring		
	Responsible person	Method of implementation	Timeframe for implementation	Responsible person	Frequency	Evidence of compliance
<ul style="list-style-type: none"> <li>- All old equipment removed during the project must be stored in such a way as to prevent pollution of the environment;</li> <li>- Oil containing equipment must be stored to prevent leaking or be stored on drip trays;</li> <li>- All scrap steel must be stacked neatly and any disused and broken insulators must be stored in containers;</li> <li>- Once material has been scrapped and the contract has been placed for removal, the disposal Contractor must ensure that any equipment containing pollution causing substances is dismantled and transported in such a way as to prevent spillage and pollution of the environment;</li> <li>- The Contractor must also be equipped to contain and clean up any pollution causing spills; and</li> <li>- Disposal of unusable material must be at a licensed waste disposal site.</li> </ul>	Contractor	Method Statement	Construction – when applicable	ECO	Monthly – when applicable	Adherence to method statements

**5.35 Landscaping and rehabilitation**

**Impact management outcome:** Areas disturbed during the development phase are returned to a state that approximates the original condition.

Impact Management Actions	Implementation			Monitoring		
	Responsible person	Method of implementation	Timeframe for implementation	Responsible person	Frequency	Evidence of compliance
<ul style="list-style-type: none"> <li>- All areas disturbed by construction activities must be subject to landscaping and rehabilitation; All spoil and waste must be disposed of to a registered waste site;</li> <li>- All slopes must be assessed for contouring, and to contour only when the need is identified in accordance with the Conservation of Agricultural Resources Act, No 43 of 1983</li> <li>- All slopes must be assessed for terracing, and to terrace only when the need is identified in accordance with the Conservation of Agricultural Resources Act, No 43 of 1983;</li> <li>- Berms that have been created must have a slope of 1:4 and be replanted with indigenous species and grasses that approximates the original condition;</li> <li>- Where new access roads have crossed cultivated farmlands, that lands must be rehabilitated by ripping which must be agreed to by the holder of the EA and the landowners;</li> <li>- Rehabilitation of access roads outside of farmland;</li> <li>- Indigenous species must be used for with species and/grasses to where it compliments or approximates the original condition;</li> <li>- Stockpiled topsoil must be used for rehabilitation (refer to <b>Section 5.24: Stockpiling and stockpiled areas</b>);</li> </ul>	Contractor	Method Statements; erosion protection, alien eradication plan.	Concurrent with Construction	ECO	Monthly	Adequately revegetated work areas; no erosion or invasive plant species.

<ul style="list-style-type: none"> <li>- Stockpiled topsoil must be evenly spread so as to facilitate seeding and minimise loss of soil due to erosion;</li> <li>- Before placing topsoil, all visible weeds from the placement area and from the topsoil must be removed;</li> <li>- Subsoil must be ripped before topsoil is placed;</li> <li>- The rehabilitation must be timed so that rehabilitation can take place at the optimal time for vegetation establishment;</li> <li>- Where impacted through construction related activity, all sloped areas must be stabilised to ensure proper rehabilitation is effected and erosion is controlled;</li> <li>- Sloped areas stabilised using design structures or vegetation as specified in the design to prevent erosion of embankments. The contract design specifications must be adhered to and implemented strictly;</li> <li>- Spoil can be used for backfilling or landscaping as long as it is covered by a minimum of 150 mm of topsoil.</li> <li>- Where required, re-vegetation including hydro-seeding can be enhanced using a vegetation seed mixture as described below. A mixture of seed can be used provided the mixture is carefully selected to ensure the following:             <ul style="list-style-type: none"> <li>a) Annual and perennial plants are chosen;</li> <li>b) Pioneer species are included;</li> <li>c) Species chosen must be indigenous to the area with the seeds used coming from the area;</li> <li>d) Root systems must have a binding effect on the soil;</li> <li>e) The final product must not cause an ecological imbalance in the area</li> </ul> </li> </ul>						
---	--	--	--	--	--	--

## 6 ACCESS TO THE GENERIC EMPr

Once completed and signed, to allow the public access to the generic EMPr, the holder of the EA must make the EMPr available to the public in accordance with the requirements of Regulation 26(h) of the EIA Regulations.

# ESKOM KUDU – ELDERS 132KV POWER LINE

## DFFE REF: 2022-06-0014

### PART B: SECTION 2

## EMPr for Eskom Distribution Kudu – Elders 132kV power line

### 7 SITE SPECIFIC INFORMATION AND DECLARATION

#### 7.1 Sub-section 1: contact details and description of the project

##### 7.1.1 Details of the applicant:

Name of applicant: Eskom Holdings SOC Ltd, Mpumalanga Operating Unit

Contact Person: Betty Ndlovu

Tel: +27 13 693 4469/ +27 83 596 6068

Email: NgobenBT@eskom.co.za

Eskom Park, Main Building, Land Development Department, 3rd floor, office B313, Jelicoe & Water Meyer Streets, WITBANK

##### 7.1.2 Details and expertise of the EAP:

Name of EAP: Ria Pretorius, Setala Environmental

Tel No: +27 82 568 6344

Fax No: +27 86 675 4026

E-mail address: ria@setalaenvironmental.co.za

Expertise of the EAP

Experience of the Environmental Assessment Practitioner (Ria Pretorius):

- A registered professional Environmental Assessment Practitioner with EAPASA, with Registration number 2019/1908.
- Eighteen years' experience in environmental applications.
- Completed more than 50 authorised projects in this field.
- Extensive experience in field investigations and report writing.
- Member of the Environmental Law Association (ELA).
- Member of the International Association for Impact Assessment South Africa (IAIASa).
- Holder of multiple academic qualifications, the highest at NQF level 9 (masters degree).
- Attended additional courses i.e. at North West University in EIA, NEMA Regulations; The University of Pretoria, Faculty of Law in Environmental Law.

##### 7.1.3 Project name:

Eskom Kudu - Elders 132kV power line

##### 7.1.4 Description of the project:

This project is for the construction of a ± 26km overhead line between Kudu Substation and the Elders



substation as well as for the construction of Elders substation.

This application is for the supply of bulk electricity. The proposed infrastructure, the overhead powerline and the substation will remain Eskom's property.

The following to be constructed:

- Construct a ± 26km Kingbird overhead 132kV line outside an urban area from Kudu Substation (at Komati Power Station) to the proposed Elders substation. (Listing Notice 1 Activity 11)
- Construct 2 x 20MVA 132/11kV Elders Substation. (Listing Notice 1 Activity 11)
- Construct Power line structures/ stayed monopole steel poles within 32 meters of a waterbody along the 132kV feeder line and excavate more than 10 cubic metres of soil and rock from a watercourse. (Listing Notice 1 Activity 19)
- Develop access roads of wider than 4 metres to construct the power line in (bb) National Protected Area Expansion Strategy Focus areas and (ee) Critical biodiversity areas. (Listing Notice 3 Activity 4 (bb) & (ee))
- The clearance of the vegetation underneath the power line alignment is not a listed activity, being a linear activity. An area of 8m will be cleared of major trees and bushes, 4m on either side of the proposed alignment of the power line.
- The construction of a temporary laydown area of approximately 0,18ha on Elders substation site is not a listed activity.

### 7.1.5 Project location:

The project is located on Komati Power Station 56-IS Remainder; Goedeheop 46-IS R/3, Portions 8/3, 2, Re, 4; Kleinfontein 49-IS Portions 10/1, RE/4, 12/4, 8/4; in the jurisdiction of Steve Tshwete Local Municipality (Nkangala DM) and Schoonvlei 52-IS Portion 2, Middelkraal 50-IS 8/3, R/3 in Govan Mbeki Local Municipality (Gert Sibande DM), Mpumalanga Province. Refer to below:

Kudu-Elders Route 1				
Item	Property	Ptn	Size	SG code
1	Komati Power Station 56-IS	RE	611,8241	TOIS00000000005600000
2	Goedeheop 46-IS	R/3	396,0727	TOIS00000000004600003
3	Goedeheop 46-IS	8/3	79,1883	TOIS00000000004600008
4	Goedeheop 46-IS	2	475,2753	TOIS00000000004600002
5	Goedeheop 46-IS	RE	310,4787	TOIS00000000004600000
6	Goedeheop 46-IS	4	278,7939	TOIS00000000004600004
7	Kleinfontein 49-IS	10/1	211,2779	TOIS00000000004900010
8	Kleinfontein 49-IS	RE/4	544,2618	TOIS00000000004900004
9	Kleinfontein 49-IS	12/4	274,0902	TOIS00000000004900012
10	Kleinfontein 49-IS	8/4	818,3464	TOIS00000000004900008
11	Schoonvlei 52-IS	2	279,1883	TOIS00000000005200002
12	Middelkraal 50-IS	8/3	4,4603	TOIS00000000005000003
13	Middelkraal 50-IS	R/3	252,4993	TOIS00000000005000003

The Quarter Degree Square (QDS) is 2629AB. The study area is situated within the Quaternary Drainage Area (QDA) of B11A & B11B.

### 7.1.6 Preliminary technical specification of the overhead distribution line:

#### COORDINATES OF DEVELOPMENT PROPOSAL

##### 1 GPS coordinates Kudu – Elders 132kV power line

###### Route 1

- Length: 26,019 km.
- Starting Point at Elders substation: 26°13'57.96"S; 29°27'53.17"E.
- Middle Point: 26°10'47.32"S; 29°23'56.19"E.
- End Point at Kudu Substation site: 26° 5'37.81"S; 29°28'30.19"E.

##### 2 Temporary Laydown area

Table 2: GPS Co-ordinates

LAYDOWN AREA AT ELDERS SUBSTATION	
Approximate Centre of Site	26°13'58.39"S; 29°27'55.75"E

#### PHYSICAL SIZE OF THE ACTIVITY

The physical size of the preferred activity/ (footprint):

Table 3: The Kudu - Elders Laydown area

Alternative:	Footprint of the activity:
Laydown area (Inside Elders Substation site)	0,18 ha

## 7.2 Sub-section 2: Development footprint site map

### 7.2.1 Site Location with environmental sensitivities

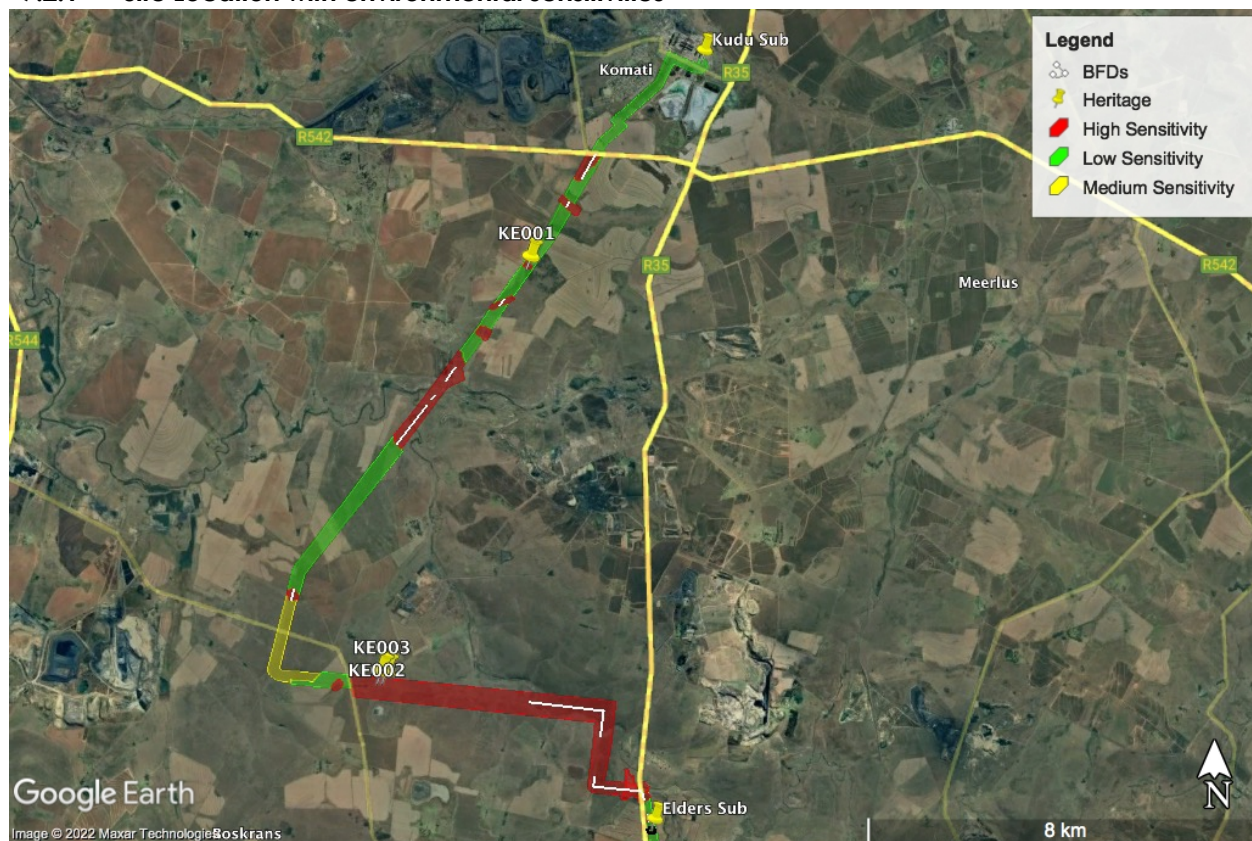


Figure 1: Sensitivity map Google Earth

### 7.2.2 Requirements and conditions of the environmental authorisation

- No activities, which require a water use authorisation, must be allowed to encroach into a water resource without a water use authorisation being in place from the Department of Water and Sanitation.
- The only bufferzones required for the project are at watercourse crossings. A minimum of a 50m buffer zone, from the edge of the stream banks, or the edge of the temporary zone (in case of wetlands) have been demarcated and it is recommended that no pylons / poles be planted within these buffer zones.
- It will be possible to maintain this 50m buffer zone at most of the crossings and nearby areas, with the possible exception of the crossing at the Olifants River and associated floodplain wetland area.
- It is more than likely that a General Authorisation (GA) process will be required for the project, unless the span of the power line will be able to clear the wetland area plus the associate buffer zone. If not, the applicant must apply for a GA / water use.
- Notwithstanding, the buffer zones must be delineated and maintained as far as possible. That is, they must be seen as 'no-go zones' in terms of the general movement of people and vehicles; placement of portable toilets; laydown areas; temporary storage areas, etc.
- No watercourses (streams, drainage lines, rivers) may be impeded or impounded during the construction phase or at any stage of the project at all.
- Bird Flight Diverters (BFDs) must be installed in the areas indicated within the report. These areas include high-risk bird sensitive areas such as watercourse crossings and along with the elevated power line which creates potential collisions / bird-strikes.
- The Bird Flight Diverters (BFDs) must be placed across the demarcated areas of the powerline along the earth wire at 5m intervals, alternating black and white.
- Each monopole must be fitted with bird perches on the top. This helps to draw large birds (eg. Vultures) away from the dangerous / risky insulators that can result in electrocutions.
- Implementation of a Fossil chance find protocol for the project.
- Should any archaeological sites, artefacts, paleontological fossils or graves be exposed during construction work, work must be stopped immediately, the relevant heritage resources agency must be informed and the services of an accredited heritage professional must be obtained for an

assessment of the heritage resources.

- If any unmarked human burials are uncovered and the archaeologist called in to inspect the finds and/or the police find them to be heritage graves, then mitigation may be necessary and the SAHRA Burial Grounds and Graves (BGG) Unit must be contacted for processes to follow.
- Weekly monitoring of pylon excavation areas during the pre-construction and construction phase by the ECO.

### 7.3 Sub-section 3: Declaration

The proponent/applicant or holder of the EA affirms that he/she will abide and comply with the prescribed impact management outcomes and impact management actions as stipulated in part B: section 1 of the generic EMPr and have the understanding that the impact management outcomes and impact management actions are legally binding. The proponent/applicant or holder of the EA affirms that he/she will provide written notice to the CA 14 day prior to the date on which the activity will commence of commencement of construction to facilitate compliance inspections.

**Signature Proponent/applicant/ holder of EA**

**Date:**

-----

### 7.4 Sub-section 4: amendments to site specific information (Part B; section 2)

Should the EA be transferred to a new holder, Part B: Section 2 must be completed by the new holder and submitted with the application for an amendment of the EA in terms of Regulations 29 or 31 of the EIA Regulations, whichever applies. The information submitted for an amendment to an environmental authorisation will be considered to be incomplete should a signed copy of Part B: Section 2 not be submitted. Once approved, Part B: Section 2 forms part of the EMPr for the development and the EMPr becomes legally binding to the new EA holder.

**The EA will not be transferred to a new holder, therefore the current information under Part B: Section 2 is relevant.**

**PART C**

**8. SITE SPECIFIC ENVIRONMENTAL ATTRIBUTES**

**Protection of heritage resources**

**Impact management outcome:** Impact to heritage resources is minimised.

Impact Management Actions	Implementation			Monitoring		
	Responsible person	Method of implementation	Timeframe for implementation	Responsible person	Frequency	Evidence of compliance
<ul style="list-style-type: none"> <li>- Identify, demarcate and prevent impact to all known sensitive heritage features on site in accordance with the No- Go procedure in <b>Section 5.3: Access restricted areas;</b></li> <li>- If there are any new heritages resources are discovered during construction and operation phases of the proposed development, then a professional archaeologist, depending on the nature of the finds, must be contracted as soon as possible to inspect the findings at the expense of the developer.</li> <li>- If the newly discovered heritage resources prove to be of archaeological significance, a Phase 2 rescue operation may be required at the expense of the developer. Mitigation will only be carried out after the archaeologist obtains a permit in terms of section 35 of the NHRA (Act 25 of 1999). SAHRA APM Unit to be contacted for further details: (Nokukhanya Khumalo/Phillip Hine 021 202 8654).</li> <li>- If any unmarked human burials are uncovered and the archaeologist called in to inspect the finds and/or the police find them to be heritage graves, then mitigation may be necessary and the SAHRA Burial Grounds and Graves (BGG) Unit must be contacted for processes to follow (Thingahangwi Tshivase/ Ngqalabutho Madida 012 320 8490).</li> </ul>	Contractor	Method Statement; Heritage management plan	Preconstruction and construction	ECO	Weekly	Monitoring of construction areas, adherence to management plan if chance finds found.

**Protection of Palaeontological resources**

**Impact management outcome:** Impact to Palaeontological resources is minimised.

Impact Management Actions	Implementation			Monitoring		
	Responsible person	Method of implementation	Timeframe for implementation	Responsible person	Frequency	Evidence of compliance
<p>The Chance Finds Fossil Procedure must be included in the EMP as the proposed project is located in a low to very high sensitivity zone on the SAHRIS palaeo-sensitivity.</p> <p>In the unlikely event that fossils are uncovered during construction then construction must cease within the immediate vicinity, a buffer of 30 m must be established, and a palaeontologist called in to inspect the finds. The palaeontologist must obtain a section 35(4) permit in terms of NHRA and Chapter IV NHRA Regulations, before any fossils are collected.</p> <p>The following monitoring protocol must be adopted and implemented during earth moving activities:</p> <ul style="list-style-type: none"> <li>– The following procedure is only required if fossils are seen on the surface and when excavations commence.</li> <li>– When excavations begin the rocks and must be given a cursory inspection by the environmental officer or designated person. Any fossiliferous material (plants, insects, bone, coal) should be put aside in a suitably protected place. This way the construction activities will not be interrupted.</li> <li>– Photographs of similar fossil plants must be provided to the developer to assist in recognizing the fossil plants in the shales and mudstones. This information will be built into the EMP's training and awareness plan and procedures.</li> <li>– Photographs of the putative fossils can be sent to the palaeontologist for a preliminary assessment.</li> <li>– Fossil plants or vertebrates that are considered to be of good quality or scientific interest by the palaeontologist must be removed, catalogued and housed in a suitable institution where they can be made available for further study. Before the fossils are removed from the site a SAHRA permit must be obtained. Annual reports must be submitted to SAHRA as required by the relevant permits.</li> <li>– If no good fossil material is recovered then no site inspections by the palaeontologist would be required.</li> <li>– If no fossils are found and the excavations have finished then no further monitoring is required.</li> <li>– In the unlikely event that fossils are uncovered during construction then construction must cease within the immediate vicinity, a buffer of 30 m must be established, and a palaeontologist called in to inspect the finds.</li> <li>– The palaeontologist must obtain a section 35(4) permit in terms of</li> </ul>	Contractor	Method Statement	Preconstruction and construction	ECO	Weekly	Monitoring of construction areas, adherence to management plan if chance finds found.

<p>NHRA and Chapter IV NHRA Regulations, before any fossils are collected.</p> <ul style="list-style-type: none"> <li>- If there are any new heritages resources are discovered during construction and operation phases of the proposed development, then a professional archaeologist or palaeontologist, depending on the nature of the finds, must be contracted as soon as possible to inspect the findings at the expense of the developer.</li> <li>- If the newly discovered heritage resources prove to be of archaeological or palaeontological significance, a Phase 2 rescue operation may be required at the expense of the developer. Mitigation will only be carried out after the archaeologist or palaeontologist obtains a permit in terms of section 35 of the NHRA (Act 25 of 1999).</li> <li>- You may contact SAHRA APM Unit for further details: (Nokukhanya Khumalo/ Phillip Hine 021 202 8654).</li> </ul>					
---	--	--	--	--	--

**Protection of protected trees**

**Impact management outcome:** Impact to protected trees is minimised.

Impact Management Actions	Implementation			Monitoring		
	Responsible person	Method of implementation	Timeframe for implementation	Responsible person	Frequency	Evidence of compliance
<ul style="list-style-type: none"> <li>- Most trees observed in the study area are the invasive alien blackwattle (<i>Acacia mearnsii</i>) No naturally occurring trees or shrubland is present in the proposed power line servitude or the substation site.</li> </ul>	Contractor	Method Statement	Preconstruction and construction	ECO	Weekly	Monitoring of construction areas, adherence to management plan; application for tree permits

**Protection of Red Data Listed or Orange Data Listed plants**

**Impact management outcome:** Impact to RDL or ODL plants is minimised.

Impact Management Actions	Implementation			Monitoring		
	Responsible person	Method of implementation	Timeframe for implementation	Responsible person	Frequency	Evidence of compliance
<ul style="list-style-type: none"> <li>No naturally occurring trees or shrubland is present in the proposed power line servitude or the substation site.</li> <li>The vegetation of the Elders Substation site has been totally transformed by years of ploughing and cultivating of the area. No natural vegetation remains.</li> <li>The likelihood is low that any red data listed (RDL) or orange data listed (ODL) plants will be impacted. None appear to be directly within the power line servitude.</li> <li>No red data listed (RDL) floral species were observed in the study area and none are expected to occur. A few orange data listed (ODL) species were observed, but most if not all can be avoided.</li> <li>These ODL species include: Hypoxis hemerocallidea and Crinum bulbispermum</li> <li>However, should any be noticed during construction then the ECO and/or Specialist must first be contacted for advice on how to move forward. If any suspicious plants are found that need to be moved or destroyed then once again the ECO and/or specialist must first be contacted.</li> </ul>	Contractor	Method Statement	Preconstruction and construction	ECO	Weekly	Monitoring of construction areas, adherence to management plan; application for vegetation permits

#### Protection of avifauna

**Impact management outcome:** Impact to avifauna is minimised.

Impact Management Actions	Implementation			Monitoring		
	Responsible person	Method of implementation	Timeframe for implementation	Responsible person	Frequency	Evidence of compliance
<ul style="list-style-type: none"> <li>A steel mono-pole (structure) to be used for the new 132kV line, that reduces bird collisions and electrocutions.</li> <li>Bird Flight Diverters (BFDs) must be installed in the areas indicated</li> </ul>	Contractor	Method Statement	Preconstruction and construction	ECO	Weekly	Monitoring of construction areas,



<p>within the report. These areas include high-risk bird sensitive areas such as watercourse crossings along with the elevated power line which creates potential collisions / bird-strikes.</p> <ul style="list-style-type: none"> <li>- The Bird Flight Diverters (BFDs) must be placed across the demarcated areas of the powerline along the earth wire at 5m intervals, alternating black and white.</li> <li>- Each monopole must be fitted with bird perches on the top. This helps to draw large birds (eg. Vultures) away from the dangerous / risky insulators that can result in electrocutions. On H-poles spikes must be installed along the horizontal to deter birds from perching or nesting on these beams / structures.</li> <li>- Eskom will use the latest structure designs that further help reduce bird collisions and electrocutions.</li> <li>- No interaction is allowed with any birds, even common species.</li> <li>- Should a nest be found during the construction phase, work in that particular spot must be halted and a bird specialist consulted. Any nesting sites found should be cordoned off with tape and signs and declared a 'no-go' zone.</li> <li>- If the nest is within the actual servitude it might be able to be relocated, depending on the species and the advice from the bird specialist.</li> <li>- All Eskom guidelines must be implemented and adhered to. These include important guidelines such as Bird Collision Guidelines (<a href="http://www.eskom.co.za">www.eskom.co.za</a>).</li> </ul>					adherence to management plan
---	--	--	--	--	------------------------------

The GPS points at the watercourse crossings where BFDs need to be placed are shown in the table below. The map showing the corresponding locations of these identified crossings are shown the below in Figure. The BFDs need to be placed across the entire length of the demarcated watercourses, including the buffer zones. There is no need to place BFDs in any other locations along the power line route or within the Elders Substation. The proposed substation is within a totally transformed area of old farmlands.

The buffer zones for the watercourse crossing are all 50m from the edge of the watercourse. Therefore, the placement of BFDs will be across the watercourse (river, stream, wetland, farm dam) plus the surrounding 50m buffer area.

Table 15: GPS Coordinates for BFDs

Map ID Number	Coordinates	Type of Watercourse
1	26°13'51.23"S; 29°27'51.40"E	Farm Dam
2	26°13'32.88"S; 29°27'39.00"E	Valley Bottom Wetland
3	26°13'30.43"S; 29°27'13.32"E	Seep Wetland
4	26°12'55.70"S; 29°27'18.40"E	Olifants River

5	26°12'35.46"S; 29°26'27.01"E	Olifants River
6	26°11'24.83"S; 29°23'32.69"E	Dam & Drainage Line
7	26° 9'29.59"S; 29°25'3.24"E	Olifants River & Floodplain
8	26° 9'16.02"S; 29°25'14.91"E	Unnamed stream (tributary to Olifants River
9	26° 9'0.46"S; 29°25'27.77"E	Dams, drainage line & wetland
10	26° 8'14.11"S; 29°26'5.01"E	Drainage Line
11	26° 7'10.20"S; 29°26'53.13"E	Drainage Line & Valley Bottom Wetland
12	26° 6'41.49"S; 29°27'10.64"E	Valley Bottom Wetland

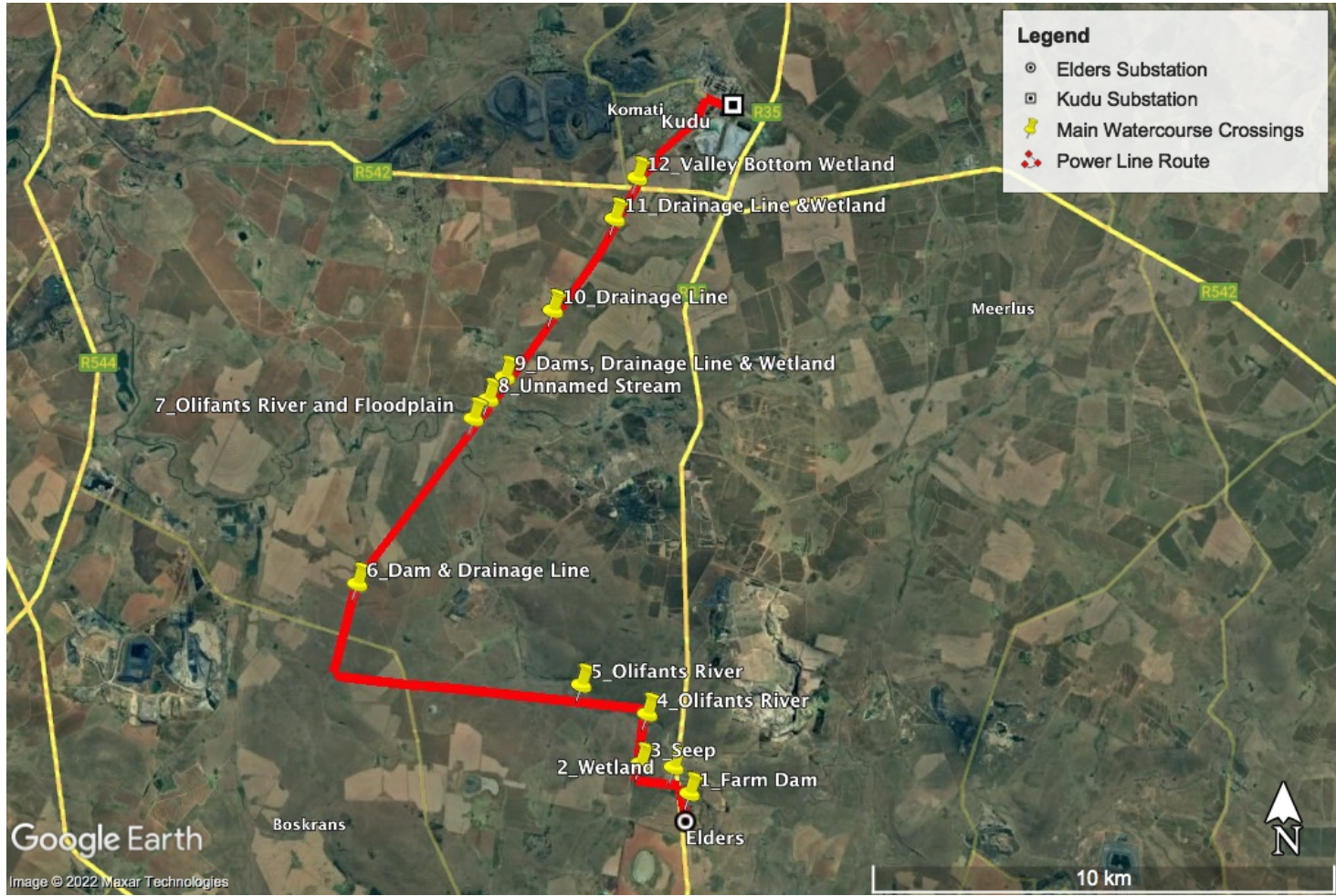


Figure 3: Watercourse crossings

The sensitivity map (avifauna) is shown below. The sensitivity is based on areas of high-risk negative impacts for birds and not necessarily on habitat status.

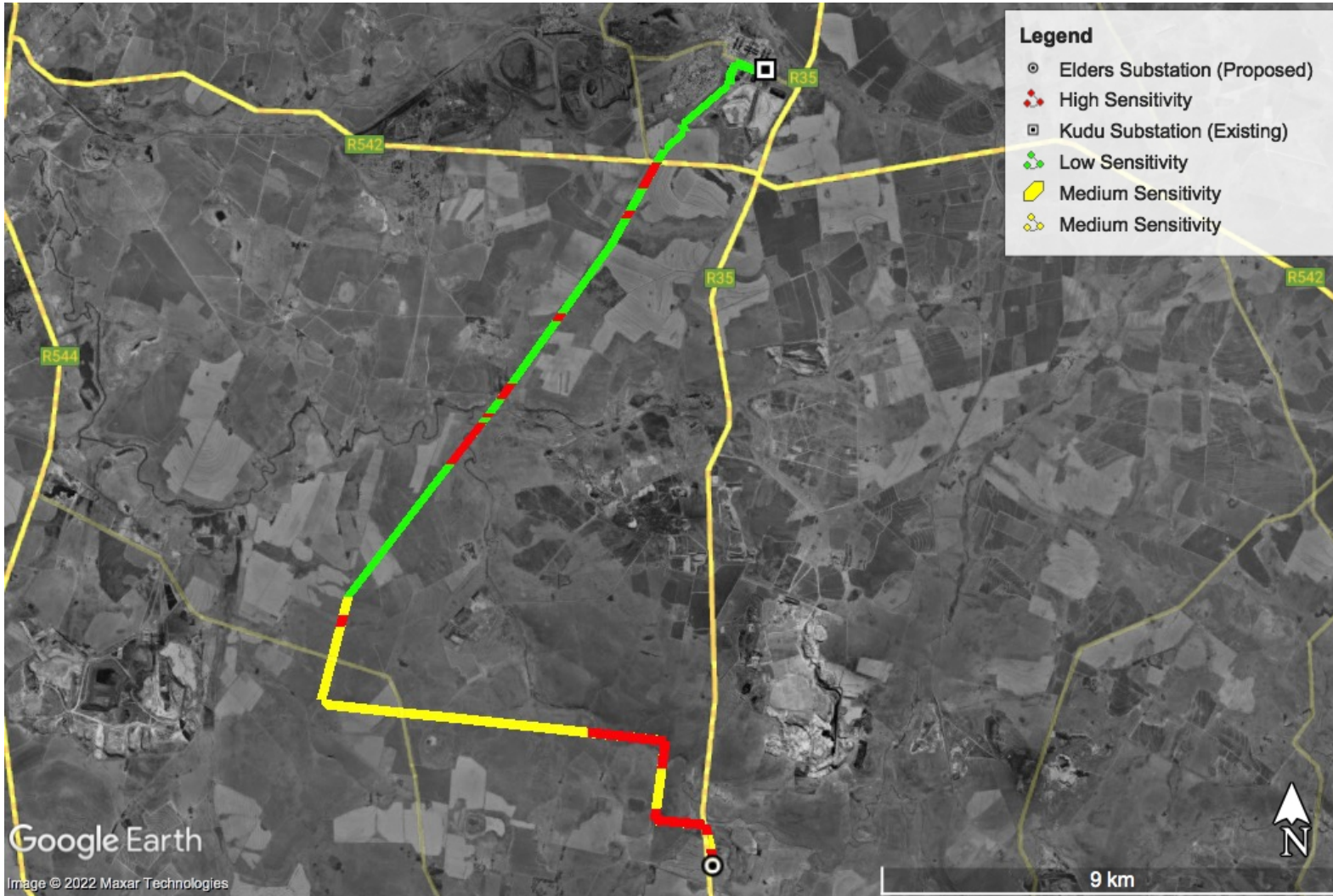


Figure 4: Sensitivity map Avifauna

**Measures to Protect Hydrological Features**

**Impact management outcome:** Impact to watercourses is minimised.

Impact Management Actions	Implementation			Monitoring		
	Responsible person	Method of implementation	Timeframe for implementation	Responsible person	Frequency	Evidence of compliance
<ul style="list-style-type: none"> <li>- The study area is situated within the primary drainage area (PDA) of B, and the quaternary drainage area (QDA) of B11A &amp; B11B. The area is within the Olifants (WMA 2).</li> <li>- There are a number of small streams, seasonal drainage lines, wetlands and the perennial Olifants River in the study area. There are a number of watercourse crossings.</li> <li>- The only buffer zones required for the project are at watercourse crossings. A 50m wide buffer zone, from the edge of riverbanks, stream banks, and temporary wetland zones have been demarcated and no pylons / poles are allowed to be planted within these buffer zones, unless absolutely necessary.</li> <li>- Pylons erected within these buffer zones will trigger the need for a General Authorisation (GA) application through the Department of Water and Sanitation (DWS).</li> <li>- The only buffer zones required in the study area (power line servitude) area at the watercourse crossings as shown below (Figure 5 to Figure 9).</li> <li>- No heavy vehicles are allowed to drive through any watercourse, unless on existing gravel and farm roads.</li> <li>- Access roads to be maintained at all times.</li> <li>- No temporary facilities or portable toilets to be setup within 100m of the watercourse and associated riparian zone and floodplains, including streams, drainage lines and wetlands.</li> <li>- No temporary accommodation or temporary storage facilities may be setup within 100m of the watercourse.</li> <li>- No temporary laydown areas may be established in the power line servitude, but only within the demarcated area near the substation site.</li> <li>- The temporary laydown area and temporary access roads (if constructed) need to be rehabilitated.</li> </ul>	Contractor	Method statements; Stormwater Management Plan;	Pre-construction & Construction	ECO	Weekly	Method Statement Compliance; General Authorisation DWS



<ul style="list-style-type: none"><li>- Disturbed surface areas in the construction phase to be rehabilitated.</li><li>- No open trenches to be left. No mounds of soils created during construction to be left.</li></ul>						
--	--	--	--	--	--	--

Note that the 50m wide buffer zones are incorporated into the delineated 'High Sensitivity' areas. This is because a buffer zone is a type of 'no-go' zone and is delineated to protect a sensitive area / habitat.

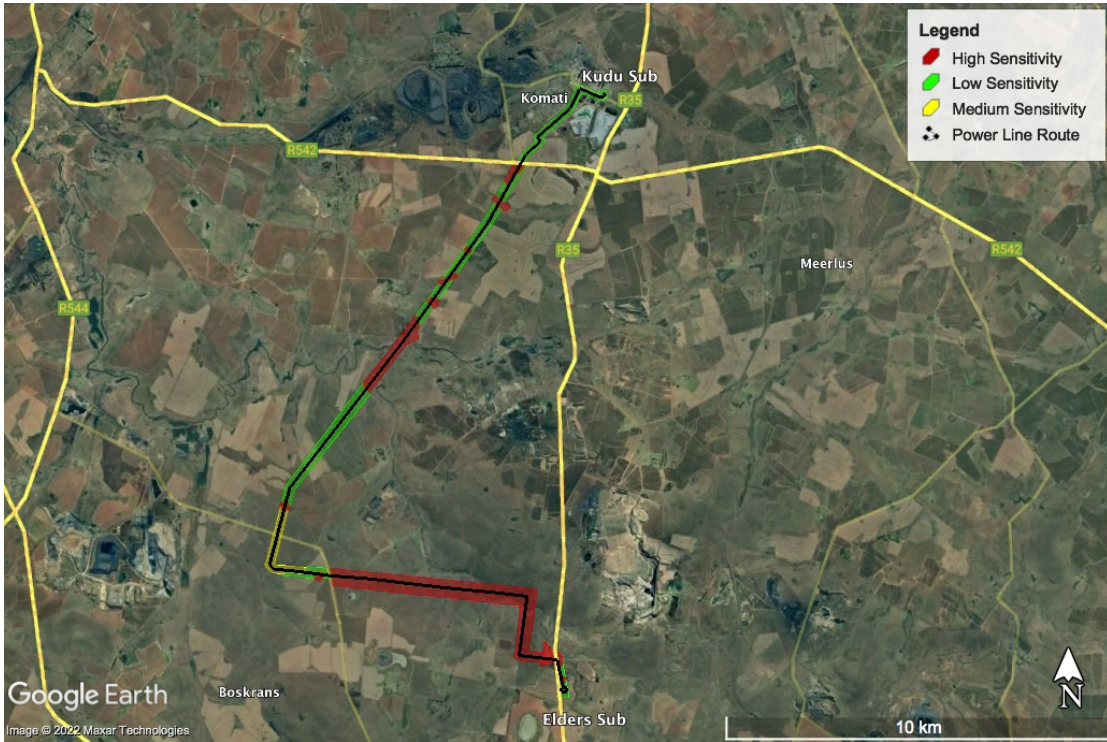


Figure 5 : Sensitivity map Project

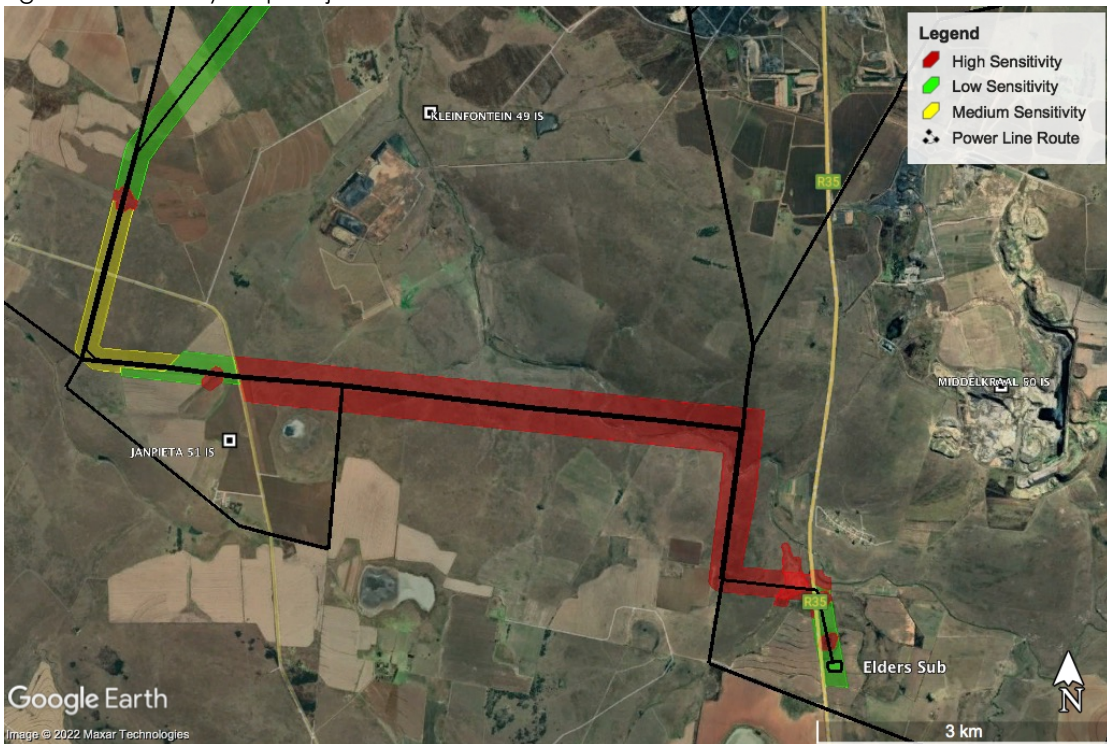


Figure 6: Sensitivity Map: Southern Section

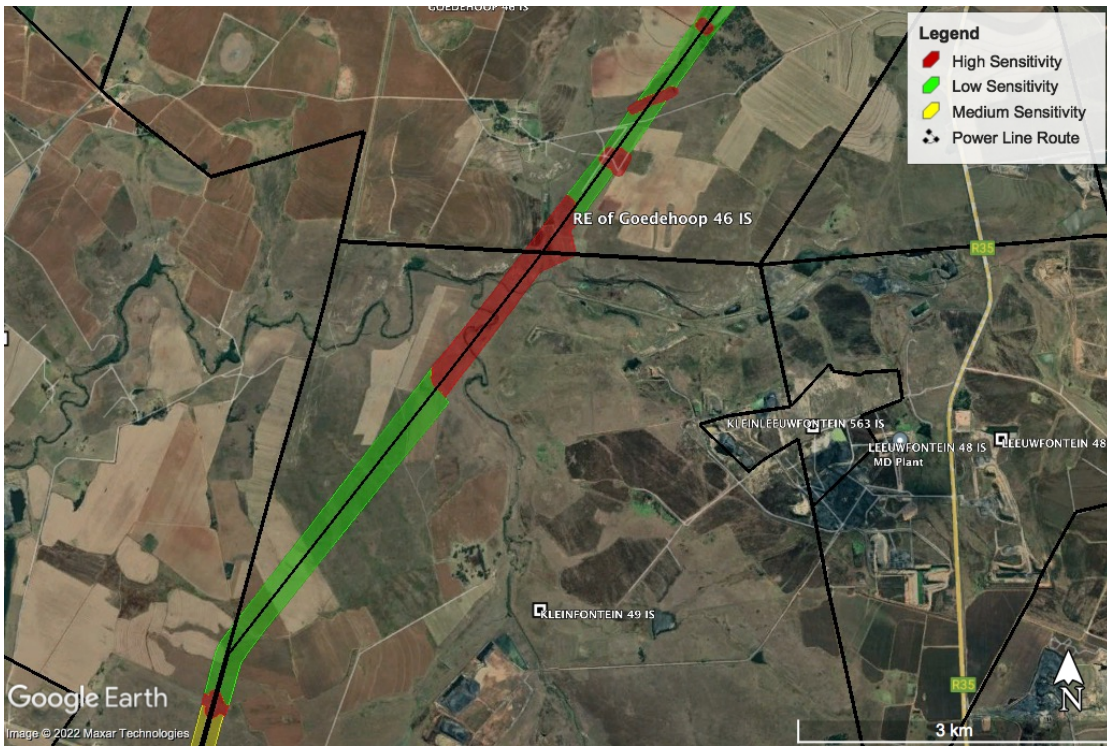


Figure 7: Sensitivity Map: Central Section



Figure 8: Sensitivity Map: Northern Section





Figure 9: Sensitivity Map: Elders Substation

## APPENDIX 1: METHOD STATEMENTS

To be prepared by the contractor prior to commencement of the activity. The method statements are **not required** to be submitted to the CA.