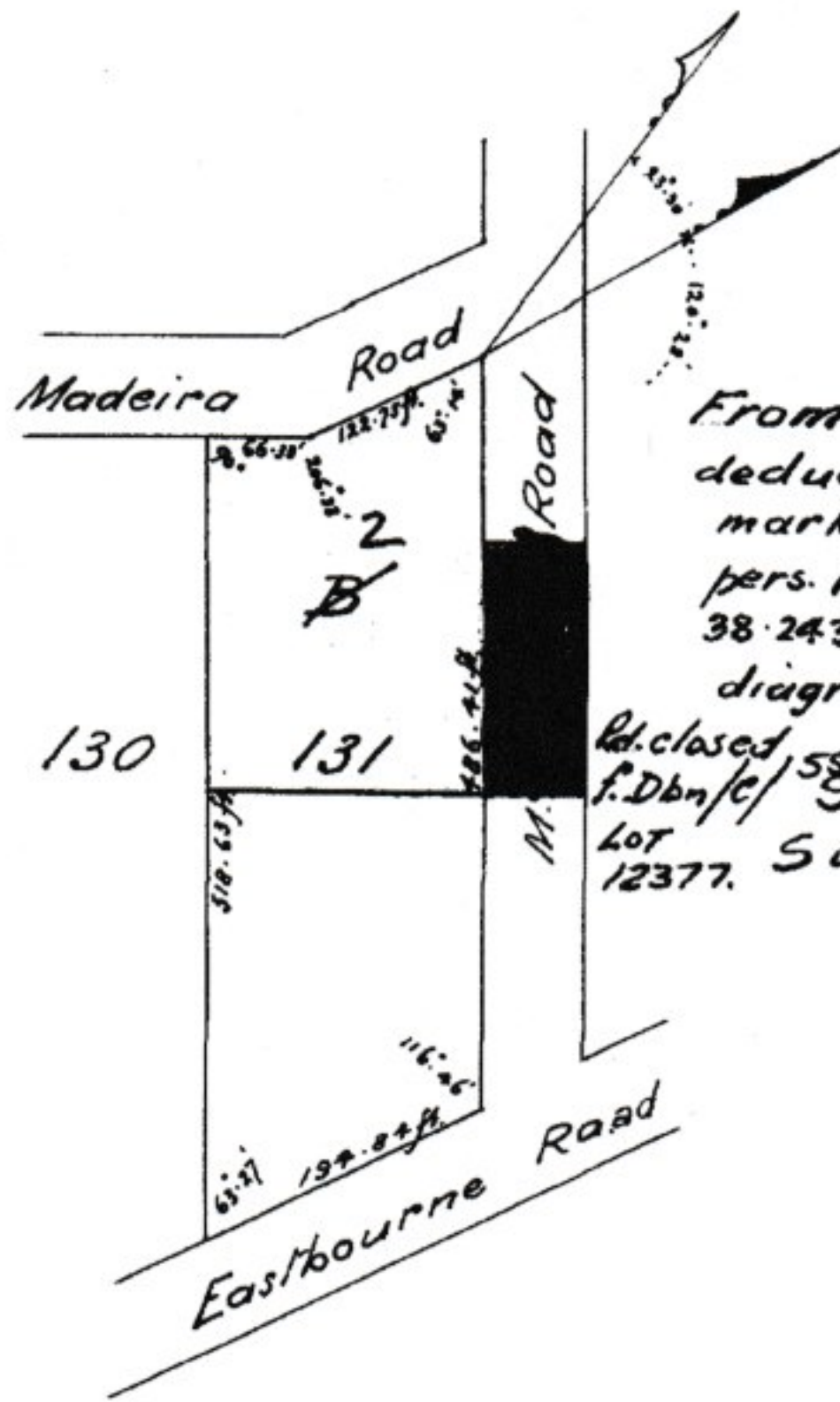


S.G.O.
 Vol. 272 Fol. 122
 3/9/04 J.W.
 SU 272 F 122



From this diagram I have deduced the subdivision marked B in extent 3rds. 38.242 pers. leaving a remainder of 3rds. 38.243 pers. according to original diagram.

Rel. closed 555. (244) W. Elton Galliers.
 f. Dbn/c/ S.G.O. Gov. Surveyor.
 Lot 12377. Subvol. 417 July 1917
 fol. 59 M. J. D.
 2/7/91

3000 SR. 71/1000

Scale of feet.

627

The above Diagram represents a piece of Sand, containing 1. Acres, 3 Roads, 36.485 Perches, being Lot 131 Block D situate on the Town Lands of the Borough of Durban, Colony of Natal.

Rev. 1904
 FU

It is bounded on the N.E. by M^cCallum Road, S.W. by Lot 130, E. by Eastbourne Road, and W. & N.W. by Madeira Road.

Surveyed by me,

July 1904

William J. D.
 Government Surveyor.

T2575/1905

17658

FOR ENDORSEMENTS, etc., SEE BACK