

Notice is hereby given that an application for Environmental Authorization (EA) in terms of the EIA Regulations, 2014 as amended will be lodged with the KZN Department of Economic Development, Tourism and Environmental Affairs (EDTEA). All interested and affected parties (I&APs) are invited to register with the contact person below within 60 days of issuing of this notice.

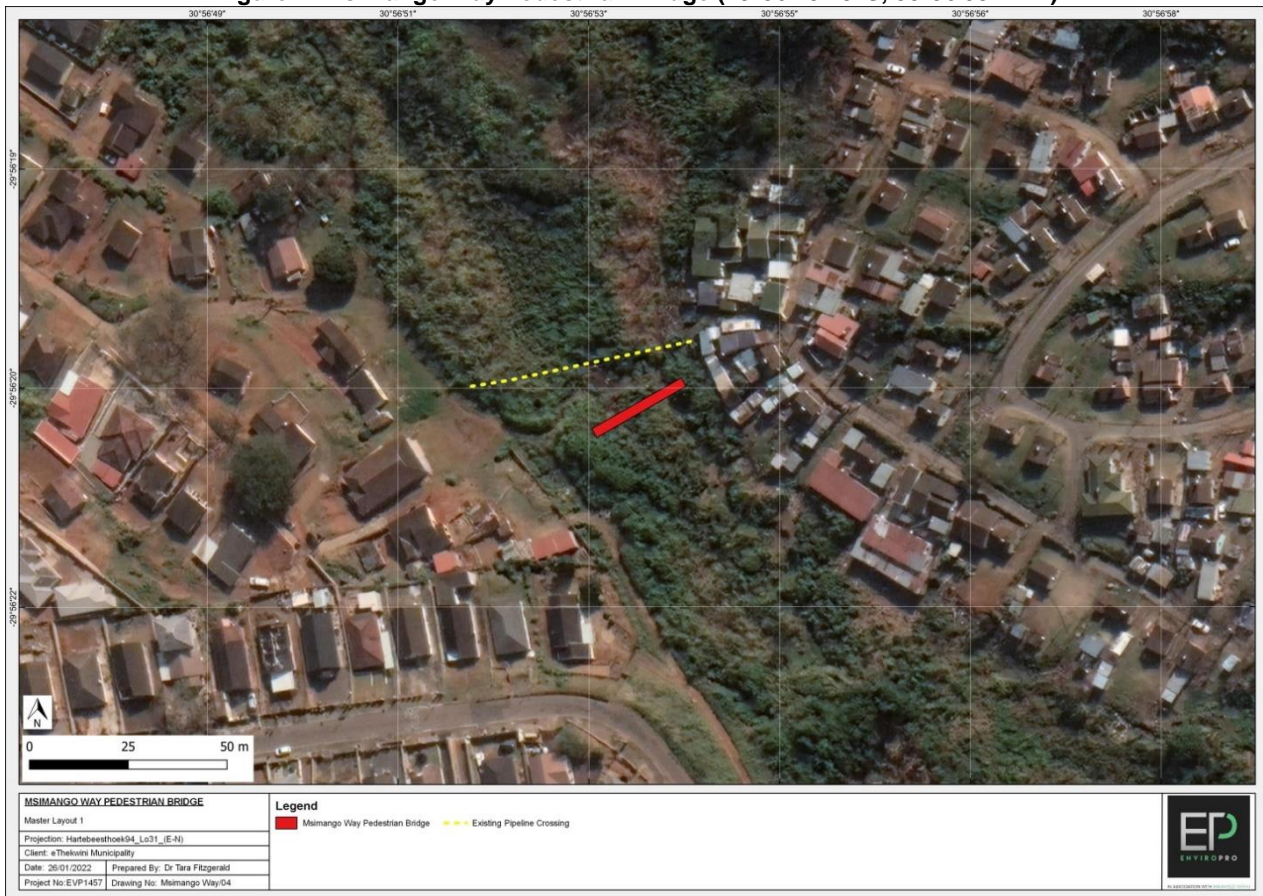
Lapha kunikezwa isaziso sesicelo sokugunyazwa kwezemvelo (EA) ngokwemigomo ye-EIA, 2014 njengoba kuchitshiyelwe sizofakwa eMnyangweni Wezokuthuthukiswa Komnotho, Ezokuvakasha Nezemvelo e-KZN (i-EDTEA). Abathintekayo nabathintekayo (ama-I&APs) abafisa ukwazi kabanzi bayamenywa ukuba babhalise nomuntu ovezwe ngezansi zingakapheli izinsuku ezingu-60 kusukela kuphume lesi saziso.

Msimango Way Pedestrian Bridge (29°56'20.43"S, 30°56'53.24"E)

Project Details: The eThekweni Metropolitan Municipality proposes to construct a pedestrian bridge across a tributary of the Umlazi River, between Msimango Way and 121314 Street. The proposed works include earthworks and the construction of structures within a watercourse. Environmental Authorisation through a Basic Assessment Process is required for: i) infilling more than 10m³ into a watercourse (Listing Notice 1, Activity 19), ii) the cumulative removal of more than 300m² of vegetation within a critically endangered ecosystem (Listing Notice 3, Activity 12), and iii) the development of infrastructure with a footprint greater than 10m² (Listing Notice 3, Activity 14). Therefore, a Basic Assessment Process will be followed to authorise the bridge (see the red line on Figure 1 below). All Interested and Affected Parties seeking additional information are invited to register with the contact person below within 60 days of this noticeboard.

Imininingwane Yeprojekthi: uMasipala weTheku uhlongoza ukwakha ibhuloho labantu abahamba ngezinyawo elizowela i-tributary engenela kumfula uMlazi, elizosuka kumgwaqo uMsimango Way kuyaku-121314 Street. Imisebenzi ehlongozwayo ihlanganisa i-earthworks kanye nokwakhiwa kwezakhiwo ngaphakathi komgudu wamanzi. Ukugunyazwa Kwemvelo Ngenqubo Yokuhlola Eyisisekelo kuyadingeka ukuze: i) kugcwaliswe indawo/umsele kwindawo engaphezu kuka-10m³ kumgudu wamanzi (Isaziso Sohlu 1, Umsebenzi 19), ii) Nokususwa kwezitshalo ezisengozini yokushabalala endaweni engaphezu kuka-300m² (Isaziso Sohlu 3, Umsebenzi 12), kanye iii) Nokuthuthukiswa kwengqalasizinda endaweni engaphezu kuka-10m² (Isaziso Sohlu 3, Umsebenzi 14). Ngakho-ke, Kuzolandelwa Inqubo Yokuhlola Eyisisekelo ukuze kugunyazwe ibhuloho (bheka umugqa obomvu kuMfanekiso 1 ngezansi). Abanentshisekelo Nabathintekayo abafuna ulwazi olwengeziwe bayamenywa ukuba babhalise kumuntu okuxhunyanwa naye ngezansi zingakapheli izinsuku ezingama-60 zaleli bhodi lesaziso.

Figure 1: Msimango Way Pedestrian Bridge (29°56'20.43"S, 30°56'53.24"E)



Further information regarding this project can be obtained from/eminye imininingwane mayelana nale-project iyatholaka kongezansi:

okuxhunywana naye / Contact person: Dr Tara Fitzgerald

Ucingo / Phone: 031 765 2942

Ifekisi / Fax: 086 549 0342

I-meyili / Email: tara@enviropro.co.za

Usuku / Date: 03 February 2022

Our Ref: EVP1457

