



Comprehensive and Professional Solutions for all Heritage Related Matters

CK 2006/014630/23

VAT NO.: 4360226270

**REPORT ON THE INVESTIGATION, EXHUMATION AND RELOCATION
OF A NUMBER OF KNOWN AND UNKNOWN GRAVES ON TWO SITES
IMPACTED ON BY OPENCAST COAL MINING OPERATIONS ON
PORTION 1 OF THE FARM MOABVELDEN 248IR, NEAR DELMAS,
MPUMALANGA (EXXARO LEEUWPAN COAL MINE)**

For:

Synergistics Environmental Services (Pty) Ltd
P.O.Box 1596
CRAMERVIEW
2060

REPORT: APAC015/27
PROJECT Reference No: 750.05026.00017

July 2015

P.O.BOX 73703
LYNNWOOD RIDGE
0040

Tel: 083 459 3091

Fax: 086 695 7247

Email: pelseranton@gmail.com

Member: AJ Pelsler BA (UNISA), BA (Hons) (Archaeology), MA (Archaeology) [WITS]

©Copyright

The information contained in this report is the sole intellectual property of APELSER ARCHAEOLOGICAL CONSULTING cc. It may only be used for the purposes it was commissioned for by the client.

DISCLAIMER:

Although all possible care is taken to identify all sites of cultural importance during a survey of study areas, the nature of archaeological and historical sites are as such that it is always possible that hidden or subterranean sites could be overlooked during the study. APELSER ARCHAEOLOGICAL CONSULTING and its personnel will not be held liable for such oversights or for costs incurred as a result thereof.

SUMMARY

Anton Pelsler (of APELSER ARCHAEOLOGICAL CONSULTING cc) was appointed by SLR Consulting in conjunction with AVBOB Johannesburg, on behalf of EXXARO Leeuwpan Coal Mine, to undertake the archaeological investigation, exhumation and relocation of a number of known and unknown graves on two sites (named MV & LP respectively) on Portion 1 of the farm Moabsvelden 248IR. These graves will be impacted on by expanding mining operations (opencast coal) of the Exxaro Leeuwpan Coal Mine, situated close to Delmas in Mpumalanga.

These sites were identified during earlier surveys by Van Vollenhoven (2012) for the mine, and were re-assessed in 2014 by Pelsler as part of the required processes for the proposed exhumation and relocation. A total of 47 graves were recorded in 2014, but after detailed site cleaning and consultation, a final number of 61 graves were exhumed and relocated from these sites. The two sites are essentially the location of the African/Black farm workers and their family members (Site MV – Moabsvelden) and the European farmers and other white residents (Site LP – for Leeuwpan), with 32 graves relocated from MV and 29 from LP. Although many of the graves were identified by their headstones and through social consultation, a few remained unknown. Many of the graves were older than 60 years of age and a SAHRA permit (Permit ID#1990) were applied for and issued in addition to the other permits obtained by AVBOB.

This document represent a Final Report on the results of the work conducted, and based on this the expanding mining operations in this area can to continue.

CONTENTS

SUMMARY

CONTENTS

INTRODUCTION

AIMS

LEGISLATIVE REQUIREMENTS

METHODOLOGY

DESCRIPTION OF THE AREA & SITE

INVESTIGATION AND RELOCATION OF BURIALS

CONCLUSIONS AND RECOMMENDATIONS

REFERENCES

APPENDIX I – PHOTOS

APPENDIX II – LIST OF GRAVES AND NEW LOCATIONS

**REPORT ON THE INVESTIGATION, EXHUMATION AND RELOCATION OF
A NUMBER OF KNOWN AND UNKNOWN GRAVES ON TWO SITES
IMPACTED ON BY OPENCAST COAL MINING OPERATIONS ON PORTION
1 OF THE FARM MOABVELDEN 248IR, NEAR DELMAS, MPUMALANGA
(EXXARO LEEUWPAN COAL MINE)**

INTRODUCTION

Anton Pelsler (of APELSER ARCHAEOLOGICAL CONSULTING cc) was appointed by SLR Consulting in conjunction with AVBOB Johannesburg, on behalf of EXXARO Leeuwpan Coal Mine, to undertake the archaeological investigation, exhumation and relocation of a number of known and unknown graves on two sites (named MV & LP respectively) on Portion 1 of the farm Moabsvelden 248IR. These graves will be impacted on by expanding mining operations (opencast coal) of the Exxaro Leeuwpan Coal Mine, situated close to Delmas in Mpumalanga.

These sites were identified during earlier surveys by Van Vollenhoven (2012) for the mine, and were re-assessed in 2014 by Pelsler as part of the required processes for the proposed exhumation and relocation. A total of 47 graves were recorded in 2014, but after detailed site cleaning and consultation, a final number of 61 graves were exhumed and relocated from these sites. The two sites are essentially the location of the African/Black farm workers and their family members (Site MV – Moabsvelden) and the European farmers and other white residents (Site LP – for Leeuwpan), with 32 graves relocated from MV and 29 from LP. Although many of the graves were identified by their headstones and through social consultation, a few remained unknown.

AIMS

The main aims with the investigation and exhumation of the graves on the two sites situated on Portion 1 of the farm Moabsvelden 248IR, near Delmas in Mpumalanga, were the following:

- (a) the detailed investigation of all possible burials located on the sites,
- (b) the successful exhumation and relocation of each burial to a municipal cemetery or cemeteries chosen by the family members of the deceased

LEGISLATIVE REQUIREMENTS

Aspects concerning the conservation of cultural resources are dealt with mainly in two acts. These are the National Heritage Resources Act (Act 25 of 1999) and the National Environmental Management Act (Act 107 of 1998).

1.1 The National Heritage Resources Act

According to the above-mentioned law the following is protected as cultural heritage resources:

- a. Archaeological artifacts, structures and sites older than 100 years
- b. Ethnographic art objects (e.g. prehistoric rock art) and ethnography
- c. Objects of decorative and visual arts
- d. Military objects, structures and sites older than 75 years
- e. Historical objects, structures and sites older than 60 years
- f. Proclaimed heritage sites
- g. **Grave yards and graves older than 60 years**
- h. Meteorites and fossils
- i. Objects, structures and sites of scientific or technological value.

Archaeology, palaeontology and meteorites

Section 35(4) of this act states that no person may, without a permit issued by the responsible heritage resources authority:

- a. destroy, damage, excavate, alter, deface or otherwise disturb any archaeological or palaeontological site or any meteorite;
- b. destroy, damage, excavate, remove from its original position, collect or own any archaeological or palaeontological material or object or any meteorite;
- c. trade in, sell for private gain, export or attempt to export from the Republic any category of archaeological or palaeontological material or object, or any meteorite; or
- d. bring onto or use at an archaeological or palaeontological site any excavation equipment or any equipment that assists in the detection or recovery of metals or archaeological and palaeontological material or objects, or use such equipment for the recovery of meteorites.
- e. alter or demolish any structure or part of a structure which is older than 60 years as protected.

The above mentioned may only be disturbed or moved by an archaeologist, after receiving a permit from the South African Heritage Resources Agency.

Human remains

Graves and burial grounds are divided into the following:

1. Ancestral graves
2. Royal graves and graves of traditional leaders
3. Graves of victims of conflict
4. Graves designated by the Minister

5. Historical graves and cemeteries
6. Human remains

In terms of Section 36(3) of the National Heritage Resources Act, no person may, without a permit issued by the relevant heritage resources authority:

- a. destroy, damage, alter, exhume or remove from its original position or otherwise disturb the grave of a victim of conflict, or any burial ground or part thereof which contains such graves;
- b. destroy, damage, alter, exhume or remove from its original position or otherwise disturb any grave or burial ground older than 60 years which is situated outside a formal cemetery administered by a local authority; or
- c. bring onto or use at a burial ground or grave referred to in paragraph (a) or (b) any excavation, or any equipment which assists in the detection or recovery of metals.

Human remains that are less than 60 years old are subject to provisions of the National Health Act (Act 61 of 2003) and to local regulations. Exhumation of graves must conform to the standards set out in the Ordinance on Excavations (Ordinance no. 12 of 1980) (replacing the old Transvaal Ordinance no. 7 of 1925).

Permission must also be gained from the descendants (where known), the National Department of Health, Provincial Department of Health, Premier of the Province and local police. Furthermore, permission must also be gained from the various landowners (i.e. where the graves are located and where they are to be relocated) before exhumation can take place.

1.2 The National Environmental Management Act

This act states that a survey and evaluation of cultural resources must be done in areas where development projects, that will change the face of the environment, will be undertaken. The impact of the development on these resources should be determined and proposals for the mitigation must be made.

METHODOLOGY

Background information – The results of previous work carried out in the area (Heritage Impact Assessments) are normally used to provide background to the project and the graves identified and recorded in the area under discussion.

Mapping and Photographing – A Google Earth image of the area, providing a location for the area and grave sites, was produced. Photographs of the area and sites, as well as each individual burial, any skeletal remains and grave goods that are recovered are also taken as part of the documentation process.

Investigation and Exhumation – Normally graves are exhumed by hand using picks and shovels and where possible remains are documented photographically in position. Remains are then removed, placed in coffins, described and documented. In cases where no skeletal remains or cultural material are found in a burial a soil sample is taken for reburial as standard practice. In this case, with permission from the families attending, a TLB was also used to remove any overburden on the graves up to the level of the burial pits.

Burial Forms – A Burial form for each individual burial is completed. Basic information on burial position, grave goods, general preservation and other general observations are included on these forms. These forms will not be reproduced in this report while the information on the burials will be summarized and interpreted at the end. The forms will however be archived for future reference if required. Photographs of all the burials will be provided as well.

DESCRIPTION OF THE AREA AND SITE

The Exxaro Leeuwpan Coal Mine is located on portions of the farms Leeuwpan 246 IR, Moabsvelden 248IR, Rietkuil 249IR, Kenbar 257IR, Goedgedacht 226IR & Wolvenfontein 244IR. The two grave sites that were exhumed and relocated are situated in the so-called Moabsvelden Block on Portion 1 of the farm Moabsvelden.

The topography of the area is relatively flat, and in general the area is characterized by open rolling grassveld, with very little tree cover except for clumps of bluegum and other trees. The area (some portions) were used extensively in the past for agricultural purposes (ploughing/crop growing and cattle/livestock), and as a result the area has been disturbed in the recent past. The historic farmsteads/homesteads and the various graveyards (European farmers and farmworker graves) are related to this phase of human utilization and evidence of prehistoric (archaeological) human presence would have been disturbed or destroyed to a large degree as a result of recent activities. Mining operations in certain portions have also impacted to a very large degree on the archaeological and historic nature of the area. The area where the two cemeteries were situated lies on old farmland portions and are in the way of expanding opencast coal mining operations.

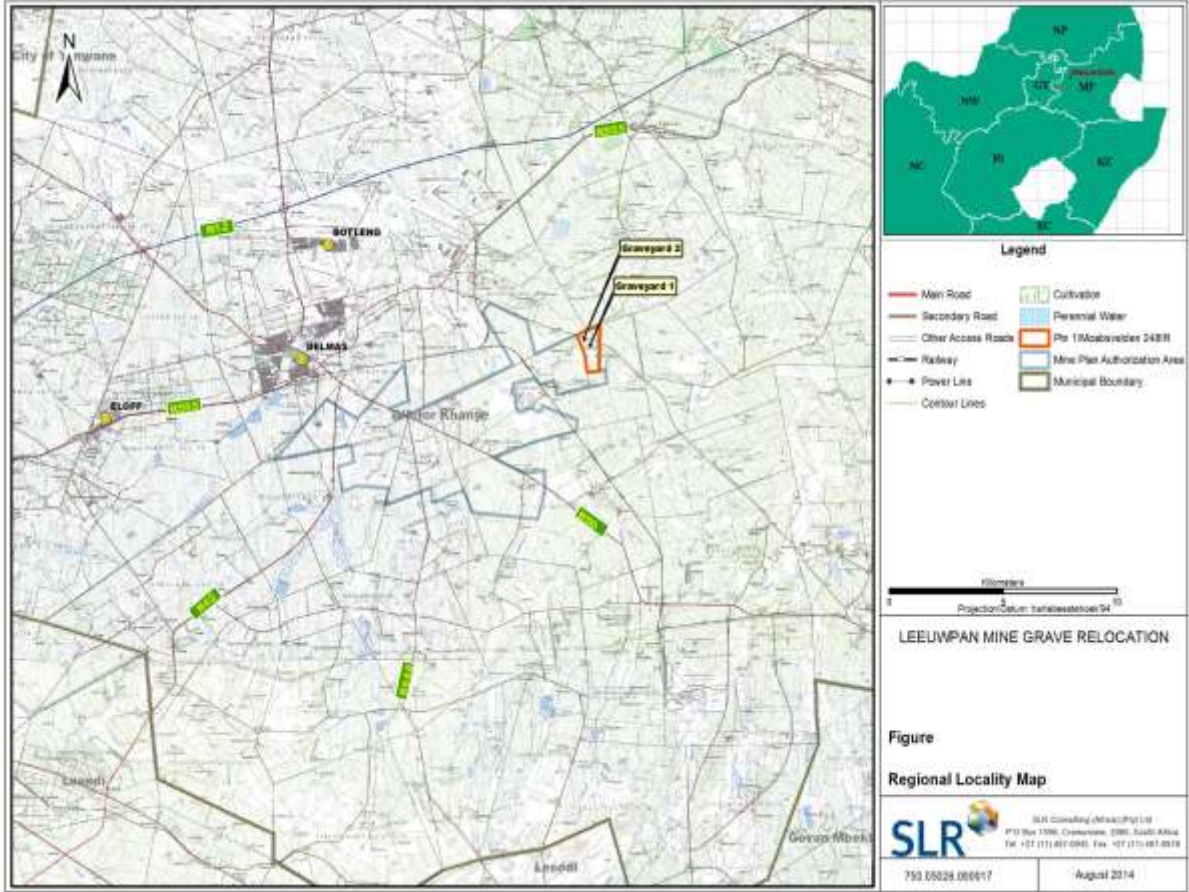


Figure 1: Regional Locality Map showing Grave Sites (courtesy SLR Consulting)

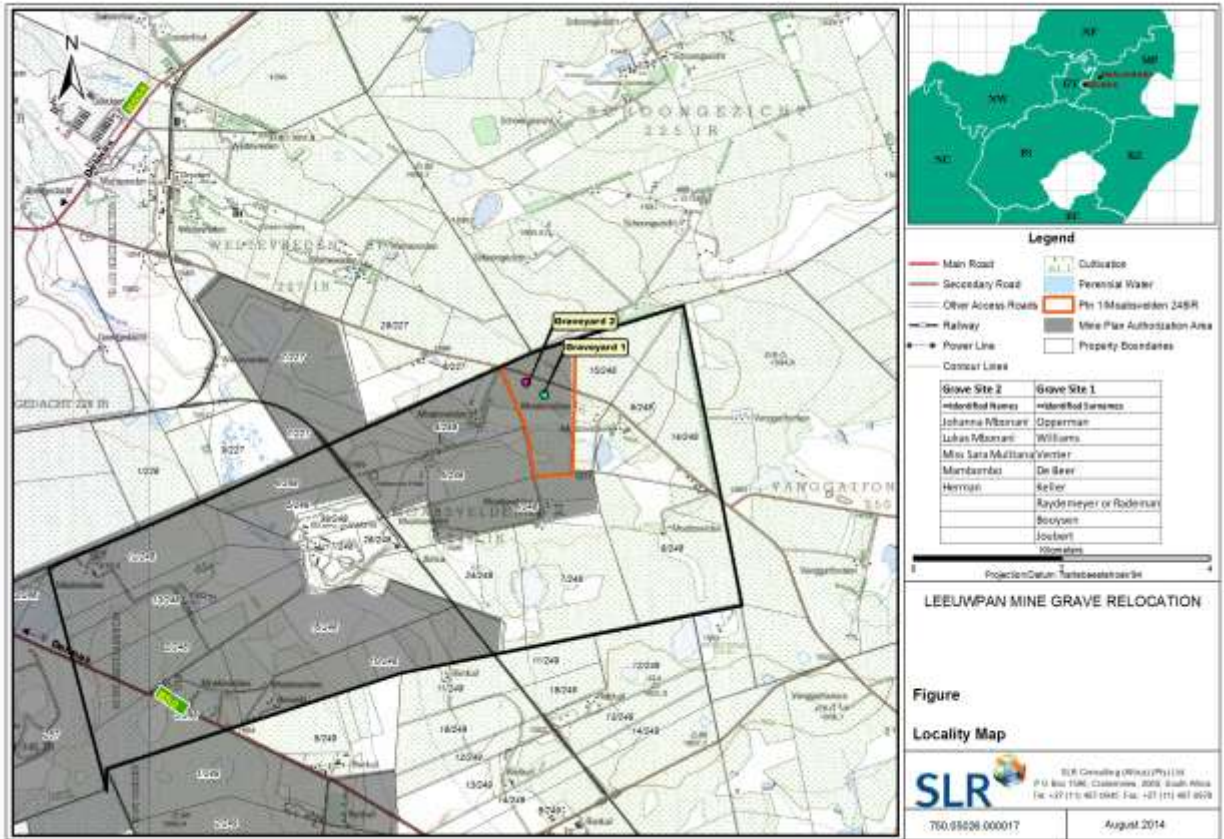


Figure 2: Locality Map showing sites (courtesy SLR Consulting).



Figure 3: Map of area showing the location of the two grave sites that needed to be relocated. Map provided by Exxaro Leeuwpán Coal Mine.



Figure 4: Aerial view of location of two grave sites that needed to be relocated (Google Earth 2014). Site 6/Grave Site 2 is the new Site MV & Site 13/Grave Site 1 is now numbered LP. The old numbers are related to the earlier 2012 & 2014 assessment numbers.

INVESTIGATION AND RELOCATION OF THE BURIALS

A total of 61 graves were exhumed and relocated from the two sites under discussion, with 32 on Site MV (initially numbered Site 6/Grave Site 2) and 29 from Site LP (initially numbered Site 13/Grave Site 1).

PHOTOGRAPHS OF EACH GRAVE/BURIAL AND RESULTANT FINDS WILL BE PROVIDED IN APPENDIX I

Site MV

This graveyard was originally thought to contain approximately 20 graves, with most of the graves at that stage unknown and only one date of death being identified (1958). The family names that were identified include Mbonau, Mbonani and Mulitana. The 2014 assessment indicates that there are about 12 graves located here. Seven (7) of these were unknown and marked with either formal headstones without any legible inscriptions or just by stones. The other 5 had headstones with names and sometimes dates of death. These included the following individuals:

1. Johanna Mbonani 1958
2. Lukas Mbonani
3. Mss Sara Mulitana
4. Mambombo?
5. Herman? 1959.

After social consultation and site clearance and detailed identification a total of 32 graves were exhumed and relocated from Site MV.

GPS: S26°08.286 E28°47.719



Figure 5: Site MV in 2014.

As indicated earlier a total of 32 graves were exhumed and relocated from Site MV. Four (4) possible graves were also tested, but declared Non Graves after investigation. All the burials positively identified and exhumed were relocated to Botleng Cemetery near Delmas. It needs to indicated here as well that another 4 possible graves that were initially identified as graves were also test excavated but found not be and was declared NON GRAVES. These graves were MV06, MV33, MV34 and MV35.

In summary the following can be said about the graves exhumed and relocated from this site:

The identified dates of death for the deceased (either indicated on legible headstone inscriptions or provided by family members present) range from 1932 (the oldest) to 1969 (the most recent). The other dates of death were 1956, 1957, 1958 and 1959. Nineteen (19) of the graves were those of unknown infants or children (based on the size of graves/burial pits) and the type of remains found. Three (3) were those of unknown adult individuals. For these graves, and especially the infant/child ones sometimes only

soil samples were taken for reburial as physical remains were very fragmented or non-existent. Four (4) known infants/children were exhumed and 6 adults. Of the known infants/children 3 were girls and 1 boy, while 4 adult males and 2 adult females were exhumed.

The following families were represented by the graves:

1. Mgcina (2 graves)
2. Masambhuko (3 graves)
3. Mbonani (2 graves)
4. Mambombo (1 grave)
5. Mulibana (1 grave) – This could more likely be the Mlibali's
6. Chili (1 grave).

The Mgcina family graves (MV03 & MV08) were those of Thando (03) an infant of unknown age who died in 1969, and Jabu Mgcina aged 13 who the family can't remember when he passed away. Very little remains were found in both graves, and mostly soil samples were taken for reburial. Dinah Masambhuko (unknown age – MV05) was the infant daughter of Herman & Bongiwe Masambhuko. She died in 1959 and some skeletal remains were recovered from her burial pit. Herman Masambhuko (MV07) also died in 1959, and was a middle-to old aged male when he passed away. Some skeletal remains and cultural material were recovered. Bongiwe Masambhuko (MV19) was also an old woman (grandmother) when she died in 1932. Some skeletal remains were recovered from the grave.

Grave MV15 was that of Johana Mbonani. She was an infant when she passed away on 19 September 1958. Both skeletal remains and some cultural material were found. Lukas Mbonani (MV25) died during old age in 1956. Some skeletal remains as well as objects such as a snuff container, green glass bottle, coffin nails and handle and an old 1c coin (with Jan van Riebeeck on) was found in his grave. Luzamasuk Mambombo (MV21) was an adult male individual whose date of death is unknown. Some remains and corrugated iron sheeting fragments and coffin wood pieces were found. Miss Sara Mulibana (Mlibali?) died on 11-10-1957 during old age. Skeletal remains and some coffin nails were found in her grave (MV23). Mororo Andries Chili (MV32) was according to the family a man aged 55 when he died (date not known). Graves MV32, 33 & 34 were actually a single grave (although initially identified as 3 separate ones) and thus numbered as MV32. The Chili family initially identified as possible grave the one marked MV35, but once tested (they were uncertain) MV35 was clearly found to No Grave. They then indicated that the area covered by MV32, 33 & 34 was definitely the grave of Andries Chili. Some human skeletal remains, as well as coffin wood, plastic and nails were also recovered.

The following graves on site MV were those of unknown infants or children:

MV01; 02; 04; 10; 11; 12; 13; 14; 16; 20; 22; 24; 26; 27; 29; 30; 31 and 35a. Most of these contained very little remains and mostly soil samples from the bottoms of these

ones were taken for reburial. MV35a was located between MV18 & 19. Corrugated iron sheeting fragments were recovered from MV29.

Unknown adult graves were represented by MV09; 17; 18. No remains were found in MV09, but both 17 & 18 contained some skeletal fragments and pieces of corrugated iron sheeting.

Site LP

The 2014 assessment indicated that the site could contain approximately 35 graves, many with headstones and legible inscriptions. This graveyard contained European graves of farmers/farm owners in the area.

Most of the graves were older than 60 years of age, with some unknown as the inscriptions had been obliterated. Two graves were younger than 60 (with dates of 1957 and 1974 respectively). The other death dates ranged between 1903 (oldest) and 1953. The following families were identified during the 2014 assessment from headstone inscriptions:

Opperman, Williams, Venter, De Beer, Keller, Rademeyer or Rademan, Booysen and Joubert.

During the 2015 exhumation and relocation process a total of 29 positively identified graves were exhumed and relocated.

GPS: S26°08.380 E28°47.865



Figure 6: Site LP as it was during the 2014 assessment.

In summary the following can be said about the graves exhumed from Site LP:

All the graves except one (LP29a) was identified. LP29a was a suspected grave located between LP26 & 27. Although no remains were found, there were packed stones and the soil was disturbed at the burial pit level (signs that this was indeed a grave). The size indicated that it probably was the burial of a young infant or child and a soil sample was taken for reburial. Most of the graves had formal headstones and grave dressings.

Of the known graves twenty (20) were those of adult individuals and eight (8) those infants or young children. All the remains were reburied in the Sundra Municipal Cemetery. The dates of death that could be determined ranged between 1905 (oldest) and 1974 (most recent). The others were 1912, 1918, 1926, 1934, 1937, 1938, 1939 and 1957.

The following families are represented:

1. Williams (7 graves)
2. de Beer (2)
3. Keller (2 graves)
4. Rademeyer (3 graves)
5. Venter (9 graves)
6. Wheeler (1 grave)
7. Viljoen (1 grave)
8. Joubert (1 grave)
9. Opperman (2 graves)

J.J.M. Williams (LP01) was an 83 year old female who died on 25.07.1974. The name on the headstone was J.J.M.Williams, but on a plaque in the grave the name Johanna M. Venter was inscribed. Some skeletal remains and coffin wood was recovered. W.P. Williams (LP02) was an adult person of unknown age. The date of death is not known, and with the fragmented remains it was not possible to determine the sex of the individual. Some corrugated iron sheeting, coffin wood and coffin handles were also recovered. T.A. Williams (LP10) was another adult whose age and date of death was not known, as well as the individuals' sex. Some skeletal remains, corrugated iron and coffin wood was found in the grave. LP12 was the grave of the unnamed Baby Williams. The date of death is unknown, and with no remains found only a soils sample was taken for reburial purposes. LP20 was the grave of Thomas Alexander Williams, and adult male of unknown age and date of death. Some remains and corrugated iron sheeting was recovered. Annie Cecelia Williams (LP21) was an adult female of unknown age and date of death. Very fragmented pieces of skeletal material were recovered from her burial pit. John Vincent Williams (LP24) was the last of the Williams family members. Once again his age (although he was an adult male) and date of death was not known, and only fragmented skeletal remains were recovered as well.

J.S.de Beer (LP03) was an adult male who died in 1957. Some remains as well as coffin pieces, corrugated iron sheeting and coffin handles were recovered. Catharina Petronella de Beer (LP04) passed away in 1938 aged 58 years. Once again some fragmented remains, metal poles and corrugated iron sheeting was found. Joseph Antonie Keller (LP05) was 7 years old when he died in 1937 according to the family who was present during the exhumations. Corrugated iron sheeting and some fragmented remains were retrieved from his burial pit. LP27 was the grave of Gosefes Keller, a baby boy of unknown age and date of death. Only a soil sample was taken for reburial purposes. Baby Ignatius Rademeyer (LP06) was only 2 days old when he passed away on 18.01.1934. Only a soil sample was taken for reburial. The unnamed baby sister (LP07) of Ignatius Rademeyer buried here according to the family who was present at the exhumations. The date of death and exact age of the individual is not known, but some fragmented remains were recovered, although these remains seemingly belong to a more adult person (maybe a young adult?). Another baby Rademeyer (a brother of the other two) was buried in LP09. Once again no remains were found and a soil sample was taken. The age and death date is unknown.

Elisabeth Loreth Venter (LP08) was a 74 year old female, born on 26 August 1851 and died on 15 January 1926. Only fragmented remains and some coffin wood was recovered. LP13 was the grave of Jan Andriaan Venter, a 63 year old male (born 30 November 1875 died 03 August 1939). Only fragmented skeletal remains and some coffin material were found. Hendriena Franciena Venter (LP14) was an adult female of unknown age and date of death. Some bone and corrugated iron sheeting was retrieved from her burial pit. Daniel Jacobus Venter (LP15) was 28 years old when he passed away in 1918. No remains were preserved and a soil sample was taken for reburial. The infant baby brother of D.J. Venter was buried in L16. Only a small amount of fragmented remains were found. Grave LP19 was the grave of Daniel Jacobus Venter (also died in 1918). Some bone and corrugated iron sheeting was found. Jochemus Johannes Venter (LP25) was an

adult male of unknown age and date of death. Some skeletal remains, coffin wood and corrugated iron were recovered. Christina Maria Venter (LP26) was 34 years old when she passed away on 28 December 1926. Fragmented human remains were preserved. The last Venter family member was buried in LP28. This was Daniel Jacobus Venter, a 10 month old boy who was born on 25 July 1918 and who died on the 13th of May 1919. Only a soil sample was taken for reburial.

Baby Wheeler (LP11), whose family was present during the exhumations, is an infant of unknown age, sex or date of death. No remains were found and a soil sample reburied. David Jacobus Viljoen (LP17) was 49 years of age (born on 16.01.1863 died on 09.03.1912) when he passed away. No remains were recovered, with a soil sample only taken. Christina Opperman (LP22) was an adult female. Her age and date of death is not known to the family and no remains were found. Johannes Opperman (LP23) was an adult male of unknown age and date of death and once again no remains were found in his burial pit. For both Oppermans' soil samples were taken for reburial. The last grave on the site (LP29a) contained no remains, and based on size of the grave and burial pit was most likely that of an infant. A soils sample was reburied.

CONCLUSIONS AND RECOMMENDATIONS

In conclusion it can be said that the investigation, exhumation and relocation of the graves in the Moabsvelden Block of operations of the Exxaro Leeuwpan Coal Mine near Delmas has been carried out successfully. Two sites (named MV & LP) was investigated and a total of 61 positively identified graves (MV = 32 & LP = 29) were exhumed and relocated. The graves from Site MV and those from Site LP were relocated to the Botleng and Sundra Municipal Cemeteries respectively.

Mining operations in this specific area can therefore continue. However, it should be mentioned that although all possible efforts are made to locate any possible graves and burial pits in areas such as these there is always a chance that unknown graves could have been missed or not claimed. This is especially true in cases where graves were unmarked. Therefore, should any be uncovered during the development and mining activities, an expert should be called in to investigate.

REFERENCES

Locality Maps showing grave sites – Provided by SLR

Location of Grave Sites – Google Earth 2014.

Knudson, S.J. 1978. **Culture in retrospect**. Chicago: Rand McNally College Publishing Company.

Pelser, A.J. 2014. **A HIA Review and Graves Assessment Report for Graves to be exhumed and relocated at the Leeuwpan Colliery near Delmas (Moabsvelden Block), Mpumalanga**. Unpublished Report APELSER ARCHAEOLOGICAL

CONSULTING cc. APAC014/38. For: Synergistics Environmental Services (Pty) Ltd. August 2014.

Pistorius, J.C.C., 2007. **A Phase 1 Heritage Impact Assessment (HIA) Study for Moabsvelden 248, Rietkuil 249 and Wolvenfontein 244 near Delmas in the Mpumalanga Province of South Africa.** (Unpublished report, Pretoria).

Republic of South Africa. 1999. National Heritage Resources Act (No 25 of 1999). Pretoria: the Government Printer.

Republic of South Africa. 1998. National Environmental Management Act (no 107 of 1998). Pretoria: The Government Printer.

Van Vollenhoven, A.C. 2012. **A Report on a Heritage Impact Assessment for the Exxaro Leeuwpán Coal Consolidation of EMPR'S, close to Delmas in the Mpumalanga Province.** Unpublished Report Archaetnos cc AE01217V. For: GCS April 2012.

APPENDIX I - PHOTOS

Site MV

























Site LP

























APPENDIX II – LIST OF GRAVES AND NEW LOCATIONS

Nr	Tombstone Origin	Sundra New	Shift to Sundra	Boteng New	Log	Wording on Tombstone	Destination
1	Shift to Sundra		1		LP 01	JJM Williams	Sundra 196
2	Shift to Sundra		2		LP 02	WP Williams	Sundra 198
3	Shift to Sudra		3		LP 03	JS De Beer	Sundra 201
4	New Tombstone	1			LP 04	Hier rus Catharina Petronella de Beer Gebore Venter ☆ 26-01-1880 † 09-10-1938 Neem dan vrij mijn stof o aarde tot het stof dat gij bedekt eens Herrijs ik weer in waarde. Door Gods Almacht opgewekt. Bedroefde en Familie , J S de Beer	Sundra 202
5	Shift to Sundra		4		LP 05	Josephus Antonie Keller	Sundra203
6	Shift to Sundra		5		LP 06	Hier rus J S de Beer ☆ 19-12-1874 † 30-09 1957 Neem dan vrij mijn stof o aarde tot het stof dat gij bedekt eens Herrijs ik weer in waarde. Door Gods Almacht opgewekt. Bedroefd en Familie	Sundra 204
7	New Tombstone	2			LP 07	Rademeyer Suster Rus in Vrede	Sundra 205
8	New Tombstone	3			LP 08	Hier Rus Elizabeth Loreth Venter Gebore Prinsloo ☆ 26-08-1851 † 15-01-1928 Zalig zijn de dooden die in Heere sterven. OPEN.14	Sundra 191
9	New Tombstone	4			LP 09	Rademeyer Broer Rus in Vrede	Sundra206
10	New Tombstone	5			LP 10	T.A.Williams Rest in Peace	Sundra 190
11	New Tombstone	6			LP 11	Babie Wheeler Rus in Vrede	Sundra 207
12	New Tombstone	7			LP 12	Baby Williams Rest in Peace	Sundra 188
13	Shift to Sundra		6		LP 13	Jan Adriaan Venter	Sundra 187
14	Shift to Sundra		7		LP 14	Hendriena Franciena Venter	Sundra 182
15	New Tombstone	8			LP 15	Daniel Jacobus Venter	Sundra 176

					☆ 1890 † 1918 Rus in Vrede	
16	New Tombstone	9		LP 16	Venter Broer Rus in Vrede	Sundra 178
17	New Tombstone	10		LP 17	Hier Rust. David Jacobus Viljoen ☆ 16-01-1868 † 09-03-1912 Na in lijden van 7 maanden ik zal in vrede te zamen neder leccen en slapen.	Sundra 208
18	New Tombstone	11		LP 18	Hier Rust. Petrus Jacobus Joubert ☆ 03-02-1863 Vermoord 16-08- 1905 Door Chinesen	Sundra 209
19	New Tombstone	12		LP 19	Hier rus Daniel Jacobus Venter ☆ 04-04-1890 † 07-10-1918 GEZ.182.1 Stille rustplaats van Gods dooden	Sundra 179
20	Shift to Sundra		8	LP 20	Thomas Alexander Williams	Sundra 193
21	Shift to Sundra		9	LP 21	Annie Cecelia Williams	Sundra 199
22	New Tombstone	13		LP 22	Christine Opperman Rest in Peace	Sundra 210
23	New Tombstone	14		LP 23	Johan Opperman Rest in Peace	Sundra 211
24	Shift to Sundra		10	LP 24	John Vincent Williams	Sundra 195
25	Shift to Sundra		11	LP 25	Jochemus Johannes Venter	Sundra 200
26	New Tombstone	15		LP 26	Hier Rust ons geliefde eggenote en Moeder Christina Maria Venter ☆ 19-09-1892 † 28-12-1926 OPENB.14:18 Zalig zyn de dooden die in den Heere sterven.	Sundra 197
27	New Tombstone	16		LP 27	Gosefes Keller Rest in Peace	Sundra 212
28	New Tombstone	17		LP 28	Hier Rus Daniel Jacobus Venter ☆ 25-06-1918 † 13-05-1919 U Stem is stil. Dit is Gods wil.	Sundra 177
29	New Tombstone			LP 29	Onbekende Baba. Moabsvelden. Rus in Vrede.	Sundra 213
30	New Tombstone			1 MV 01	Unknown person exhumed from Grave nr MV 01 Moabsvelden Rest in Peace	Botleng 22
31	New Tombstone			2 MV 02	Unknown person exhumed from Grave nr MV 02 Moabsvelden Rest in Peace	Botleng 21
32	New Tombstone			3 MV 03	Thando Mgcina † 1969	Botleng 23

						Rest in Peace	
33	New Tombstone			4	MV 04	Unknown person exhumed from Grave nr MV 04 Moabsvelden Rest in Peace	Botleng 20
34	New Tombstone			5	MV 05	Bungiwe Masumbuka ☆ Unknown † 1935-12-11 Rest in Peace	Botleng 48
35	New Tombstone			6	MV 07	Herman Gasa Masombuka ☆ Unknown † 1959-12-10 Rest in Peace Mkoneni	Botleng 49
36	New Tombstone			7	MV 18	Unknown person exhumed from Grave nr MV 07 Moabsvelden Rest in Peace	Botleng 19
37	New Tombstone			8	MV 08	Jabu Mgcina Rest in Peace	Botleng 24
38	New Tombstone			9	MV 09	Unknown person exhumed from Grave nr MV 09 Moabsvelden Rest in Peace	Botleng 18
39	New Tombstone			10	MV 10	Unknown person exhumed from Grave nr MV 10 Moabsvelden Rest in Peace	Botleng 17
40	New Tombstone			11	MV 11	Unknown person exhumed from Grave nr MV 11 Moabsvelden Rest in Peace	Botleng 16
41	New Tombstone			12	MV 12	Unknown person exhumed from Grave nr MV 12 Moabsvelden Rest in Peace	Botleng 15
42	New Tombstone			13	MV 12	Unknown person exhumed from Grave nr MV 13 Moabsvelden Rest in Peace	Botleng 14
43	New Tombstone			14	MV 14	Unknown person exhumed from Grave nr MV 14 Moabsvelden Rest in Peace	Botleng 13
44	New Tombstone			15	MV 15	Johana Mbonani ☆ Unknown † 1958-09-19 Rest in Peace	Botleng 47
45	New Tombstone			16	MV 16	Unknown person exhumed from Grave nr MV 16 Moabsvelden Rest in Peace	Botleng 12
46	New Tombstone			17	MV 17	Unknown person exhumed from Grave nr MV 17 Moabsvelden Rest in Peace	Botleng 11
47	New Tombstone			18	MV 32	Mororo Andries Chili ☆ Unknown † 55 years Rest in Peace, Maphosa, Ngenduku, Engekabazwa	Botleng 45

48	New Tombstone			19	MV 19	Dina Masombuka ☆ Unknown † 1939-01-10 Rest in Peace Masuku	Botleng 50
49	New Tombstone			20	MV 20	Unknown person exhumed from Grave nr MV 20 Moabsvelden Rest in Peace	Botleng 10
50	New Tombstone			21	MV 21	Mambombo Lozamasin Exhumed from Grave nr MV 21 Moabsvelden Rest in Peace	Botleng 44
51	New Tombstone			22	MV 22	Unknown person exhumed from Grave nr MV 22 Moabsvelden Rest in Peace	Botleng 9
52	New Tombstone			23	MV 23	Miss Sara Mulibana (Mlibali) ☆ 11-10-1957 † Unknown Rest in Peace, WAFA IO	Botleng 43
53	New Tombstone			24	MV 24	Unknown person exhumed from Grave nr MV 24 Moabsvelden Rest in Peace	Botleng 8
54	New Tombstone			25	MV 25	Lukas Mbonani ☆ Unknown † 1956 Rest in Peace	Botleng 46
55	New Tombstone			26	MV 26	Unknown person exhumed from Grave nr MV 26 Moabsvelden Rest in Peace	Botleng 7
56	New Tombstone			27	MV 27	Unknown person exhumed from Grave nr MV 27 Moabsvelden Rest in Peace	Botleng 6
57	New Tombstone			28	MV 28	Unknown person exhumed from Grave nr MV 28 Moabsvelden Rest in Peace	Botleng 5
58	New Tombstone			29	MV 29	Unknown person exhumed from Grave nr MV 29 Moabsvelden Rest in Peace	Botleng 4
59	New Tombstone			30	MV 30	Unknown person exhumed from Grave nr MV 30 Moabsvelden Rest in Peace	Botleng 3
60	New Tombstone			31	MV 31	Unknown person exhumed from Grave nr MV 31 Moabsvelden Rest in Peace	Botleng 2
61	New Tombstone			32	MV 35	Unknown person exhumed from Grave nr MV 35 Moabsvelden Rest in Peace	Botleng 1
Totaal		18	11	32			

Total New Tombstones 50

Total Old Tombstones Relocated 11