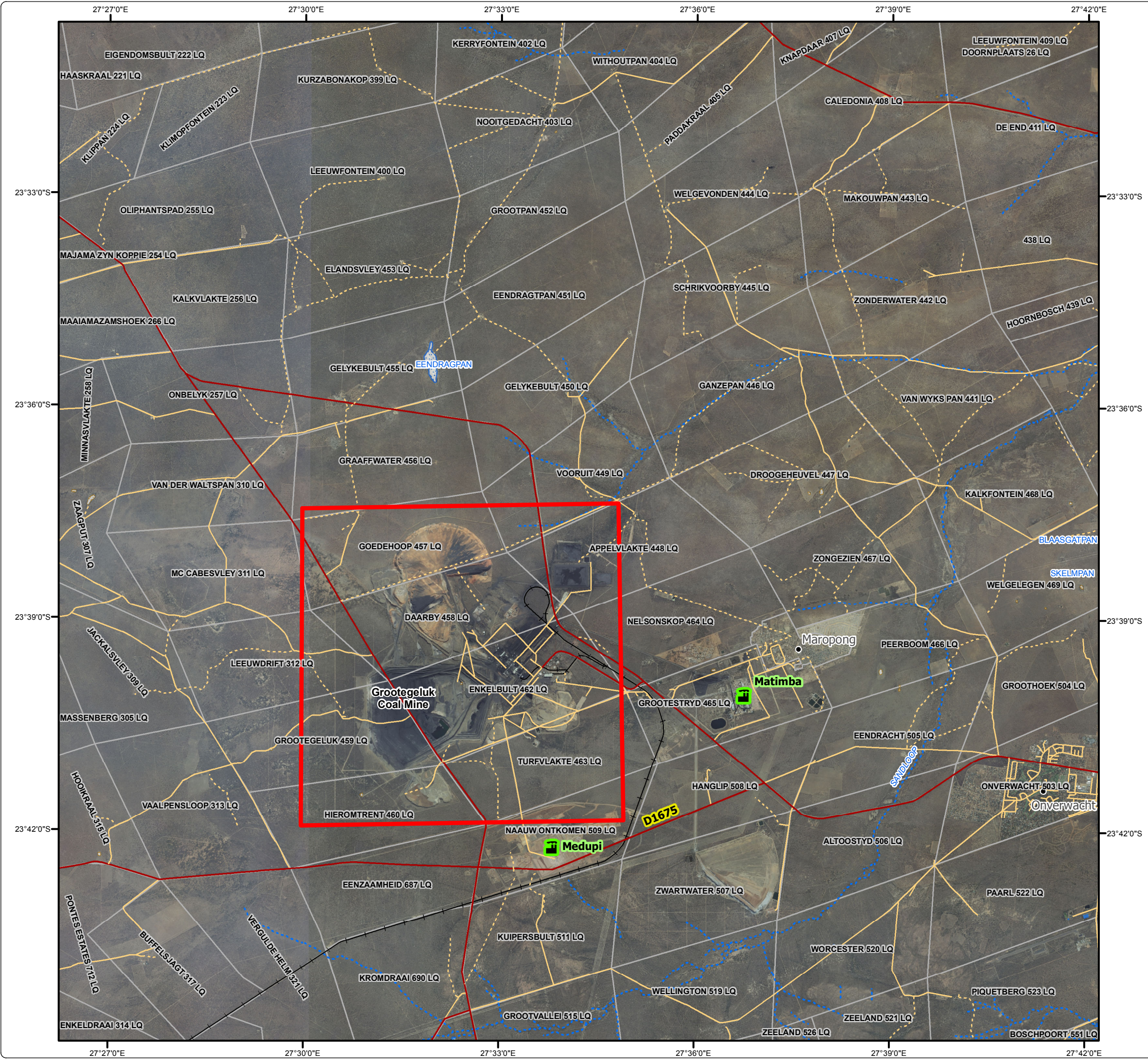


Exxaro Grootegeluk Amendment Project

Local Setting

Legend

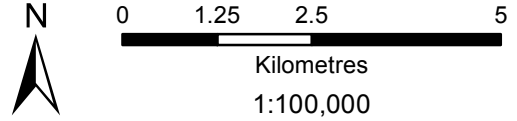
- Grootegeluk Location
- Settlement
- Power Station
- Main / Secondary Road
- Other Access Road
- Tracks & Footpaths
- Existing Railway Line
- Perennial River
- Non-Perennial River
- Dam
- Wetland
- Perennial Pan
- Non-Perennial Pan
- Farm Boundary



DIGBY WELLS
ENVIRONMENTAL

• Sustainability • Service • Positive Change • Professionalism • Future Focused • Integrity




Projection: Transverse Mercator Ref #: jcf.EXX3666.201601.040
 Datum: WGS 1984 Revision Number: 1
 Central Meridian: 27°E Date: 13/01/2016



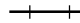

Exxaro Grootegeluk Amendment Project Proposed Infrastructure Layout

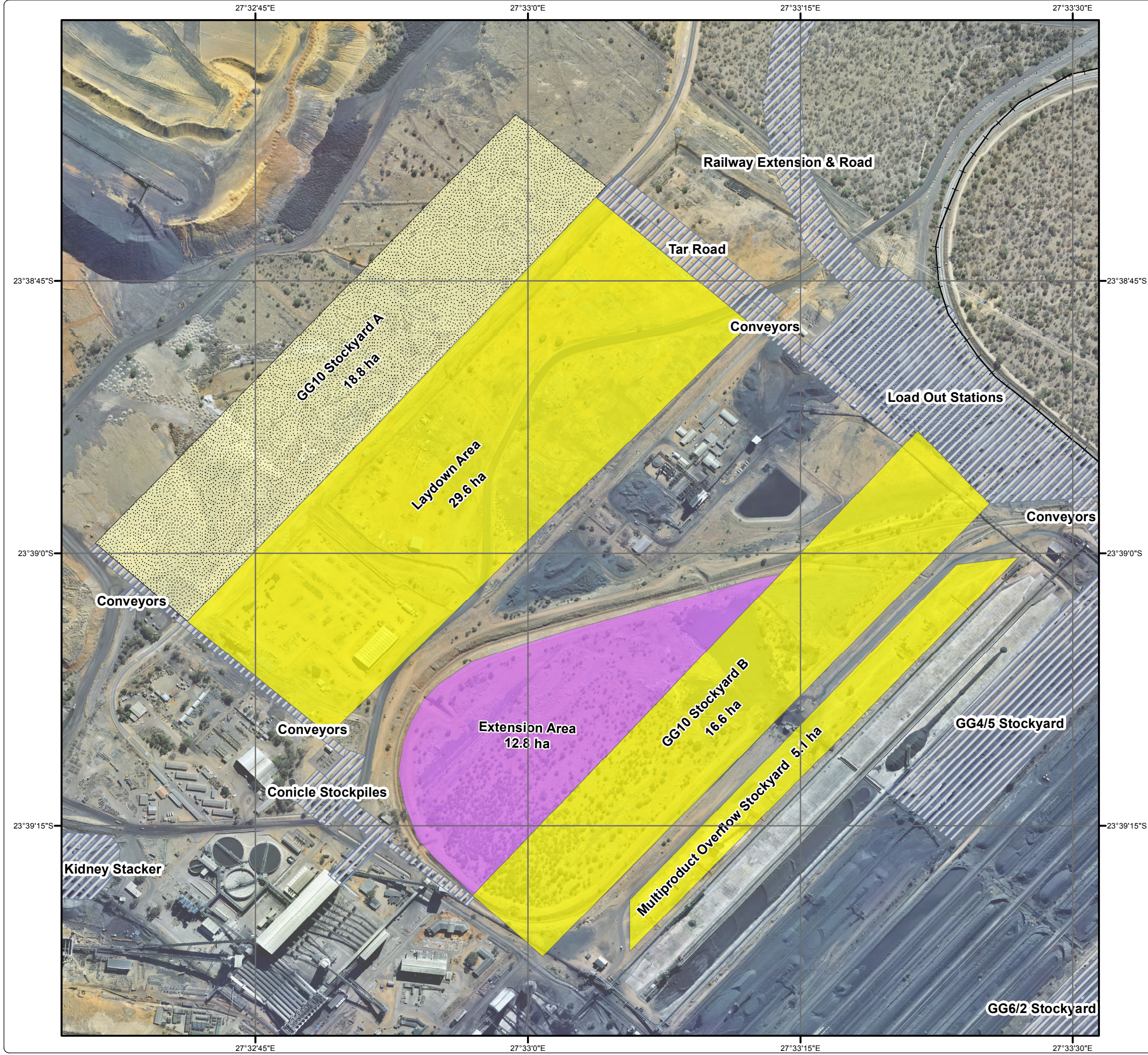
Legend

Proposed Infrastructure

-  GG10 Stockyard A
-  Infrastructure Amendment Project
-  Extension Area

Existing Infrastructure

-  Existing Railway Line
-  Existing Infrastructure



• Sustainability • Service • Positive Change • Professionalism • Future Focused • Integrity

Projection: Transverse Mercator Ref #: jcf.EXX3666.201604.165
 Datum: WGS 1984 Revision Number: 2
 Central Meridian: 27°E Date: 05/04/2016

