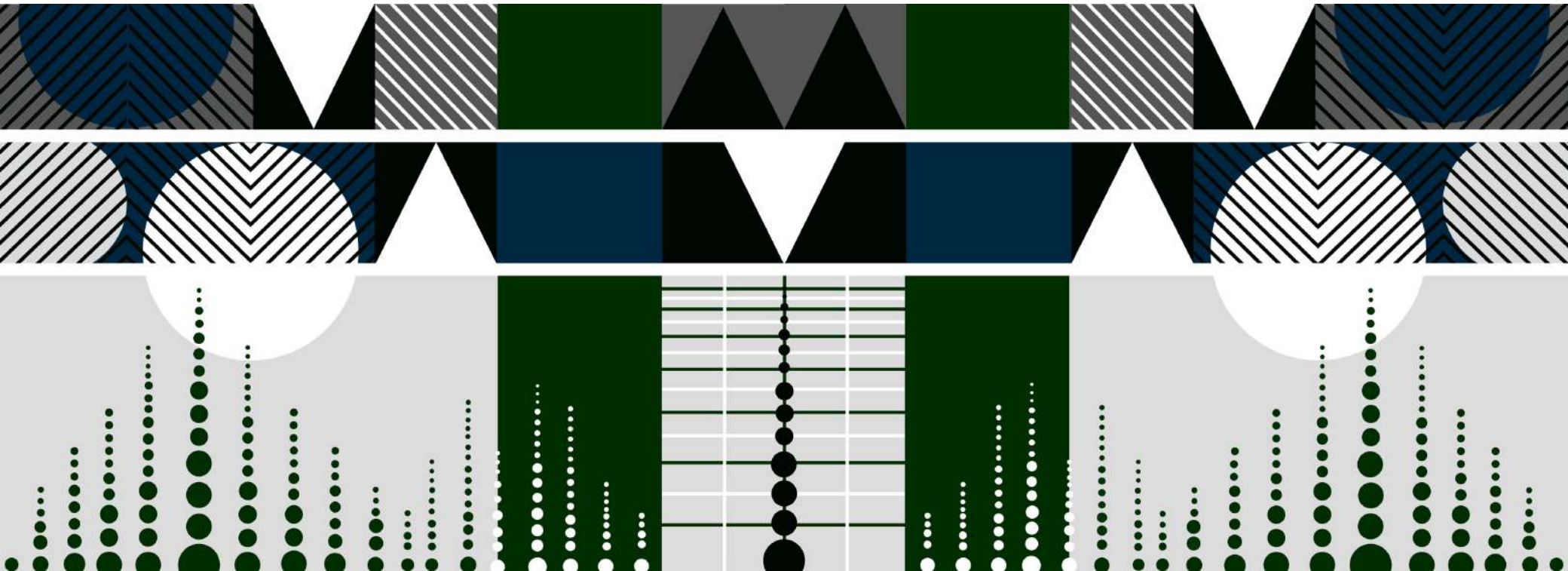


CACHE STUDIOS

Music meets SA design, architecture and art. A showcase of South African excellence, inspired by music and its powerful potential to unite people and heal.



THE CACHE STUDIOS: WHAT IS OUR INTENTION

We need to continue to find new ways of **expressing our South African heritage**, of making creative connections and building community. **Storytelling**, music, art and design are our chosen tools.

We are constantly wanting to expand our creative pool and its creative reach.

Constitution Hill is a dynamic and logical space within which to begin **exploring new creative possibilities**.

Through this process we can develop new **sensory dialogues that deeply connect** us to the creative and cultural landscape of South Africa, past and present.

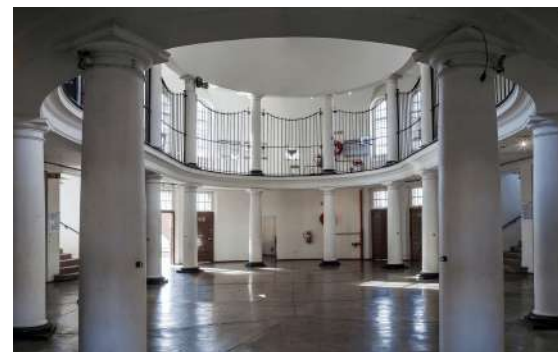
Our new **design language** will be channelled into the decorative and functional elements of all the spaces, lighting, patterning, woven elements, are all included and bring new **life and layers to the extraordinary spaces**.



Zoe Modiga



Petite Noir



CHANGE AS CONTINUITY

Con Hill, The site of our landmark court which previously was a space that detained South African struggle heroes.

Things change. This is a project that profoundly Reflects the **principle of change**.

Nothing that is alive or growing can be static. This principle of change has always been built into the fabric of Nando's' design language - a deep understanding that **change is what breathes new life** into ideas and people.

Change that doesn't cut connections with the past, but allows the past to form a solid foundation upon which things are **given the room to grow**, shift and develop.

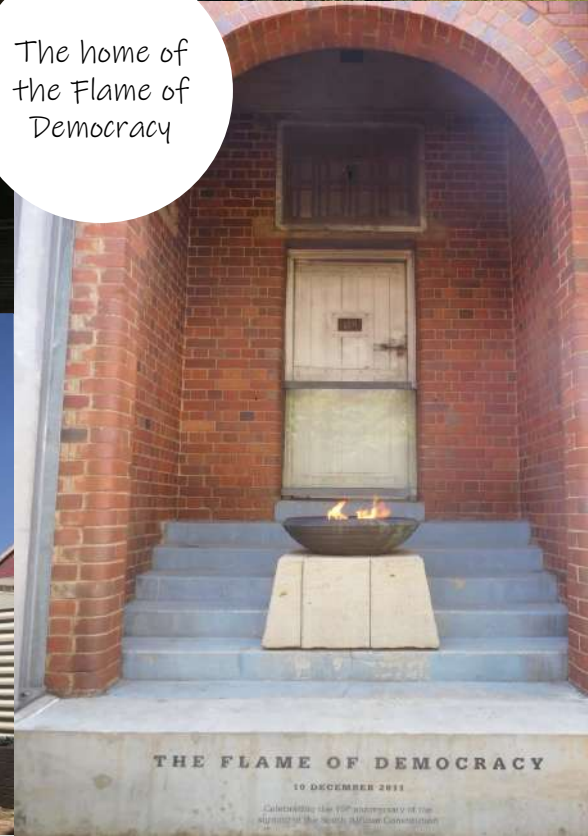
This is the basis of the interior design language for the Cache Studios at Con Hill, fired up by Nando's.



The walls that detained South African struggle heroes



The home of the Flame of Democracy



THE FLAME OF DEMOCRACY

10 DECEMBER 2011

Celebrating the 10th anniversary of the signing of the South African Constitution

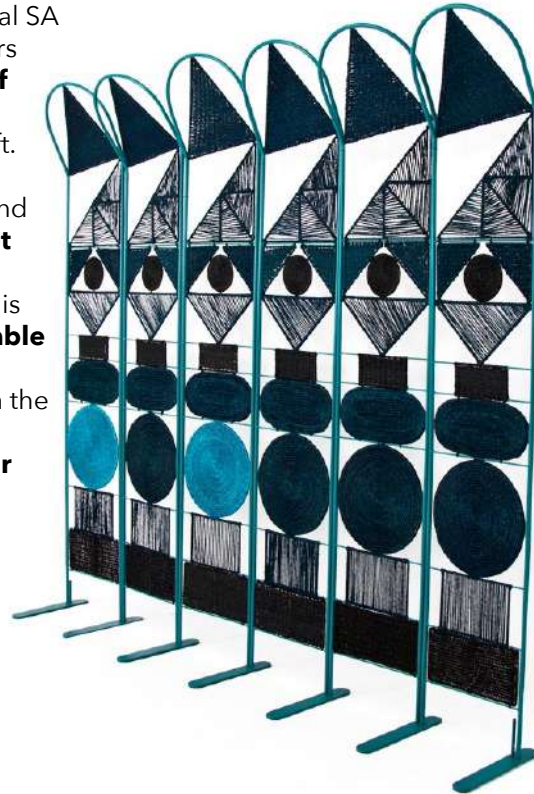


Rug by The Ninevites

THE INTENTIONS AND APPROACH

Our intention is to create a **dynamic and inspiring interior** design that shares the pieces of relevant local SA designers. To work with designers and makers that share **aspects of contemporary SA culture** and are inspired by Heritage and craft.

The approach is **collaborative** and everyone benefits. **Scorching hot South African design** literally becomes part of the furniture. This will be a **celebration of remarkable South African heritage** and will embody our belief of investing in the people of South Africa, nurturing their talent and **showcasing their creativity to the world**.



Soldier Screen by Dokter and Misses



Diplo Table by Dokter and Misses



Hlabisa Bench By Masht T Design & Houtlander





Jelly Bean Lights by Dokter and Misses



Spoek Mathambo

THE STUDIO AT CON HILL

The studio at Con Hill presents an **opportunity to connect** SA design and music and art to incorporate the particular **unique aesthetic** of South African artistic culture and visual language into the rich tapestry of history at Con Hill.

This is a unique opportunity to **develop and grow** the sensory tools at our disposal and deepen connections.



Sho Madjozi



Tutu Light by Mash T Design



Woven Mirror by Candice Lawrence





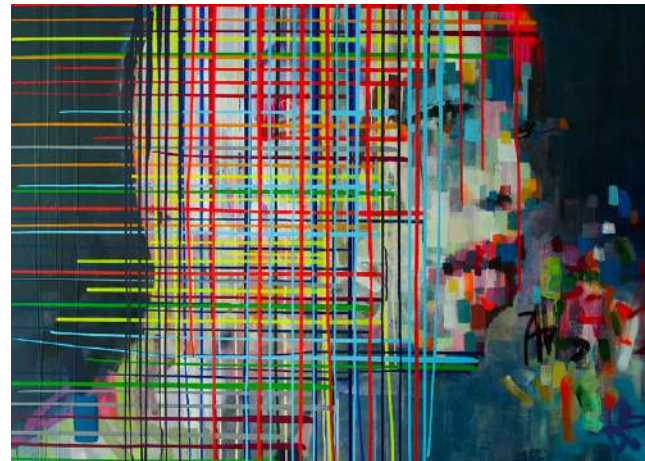
SHARING THE SPIER ARTS TRUST COLLECTION AT THE CACHE STUDIOS

The **collaborative relationship** between Nando's and the Spier Arts Trust is a deeply productive one and has grown the Nando's art collection into one of the most important corporate collections anywhere.

The collection comprises of well-respected Southern African artists. These artists **express unique views** about their country, they share different perspectives.

This cohort of creatives is also deeply **committed to making a difference** and a contribution, and they believe in the power of art to transport a generation out of poverty.

This energy and drive could make such a **powerful contribution** to the pool of talent already showcased within the walls of the Con Hill site.



SITE IMAGES AND VISITORS

Site images of Cache Studios



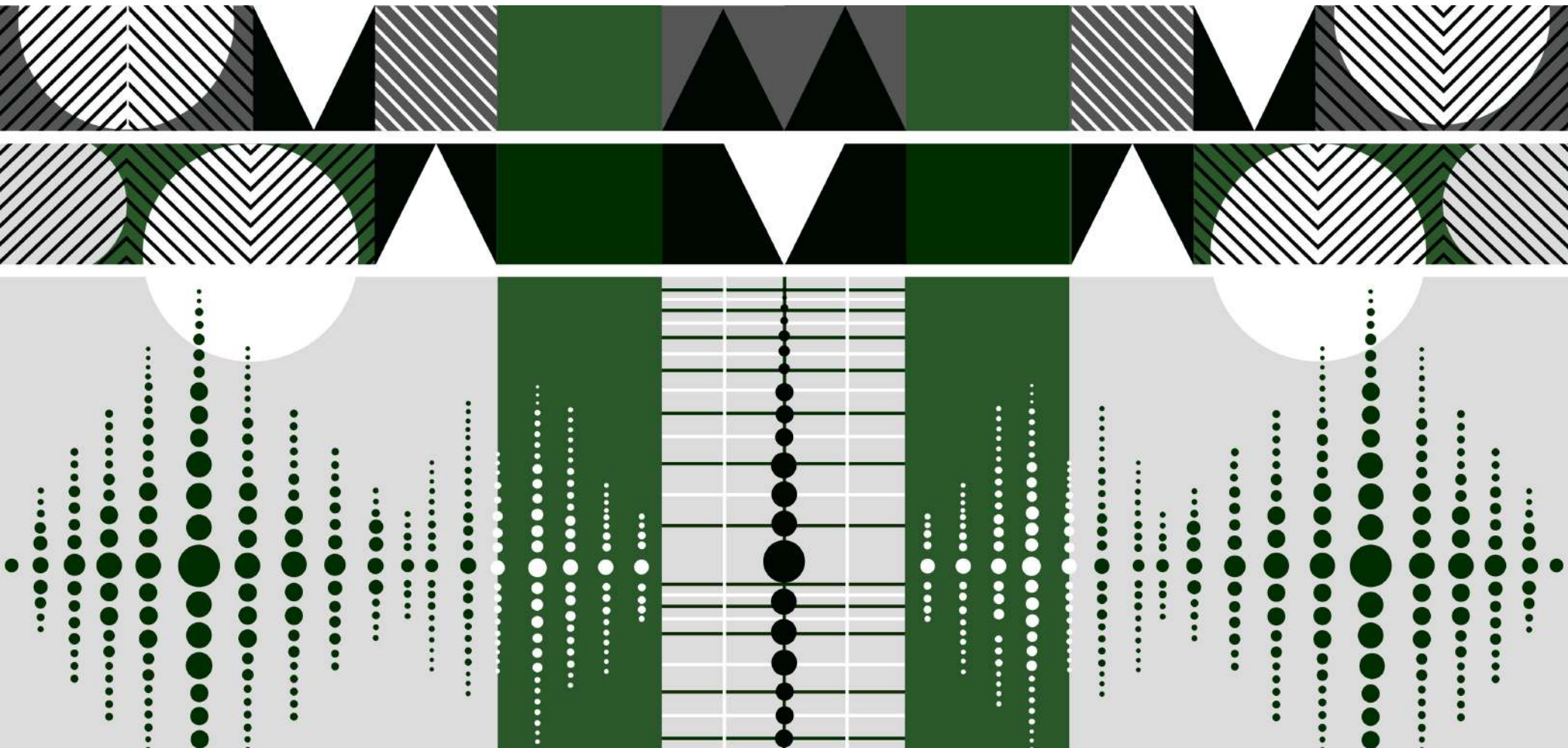
Site images of the Rehearsal room



Professor Carlo Mobelli avant- garde Jazz bassist/ composer and heads up the Jazz department at Wits School of Music will join our team

Sho Madjozi

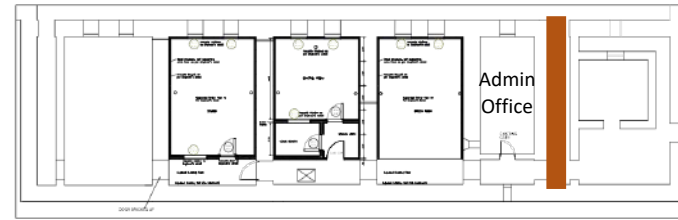
SPACIAL PLANNING



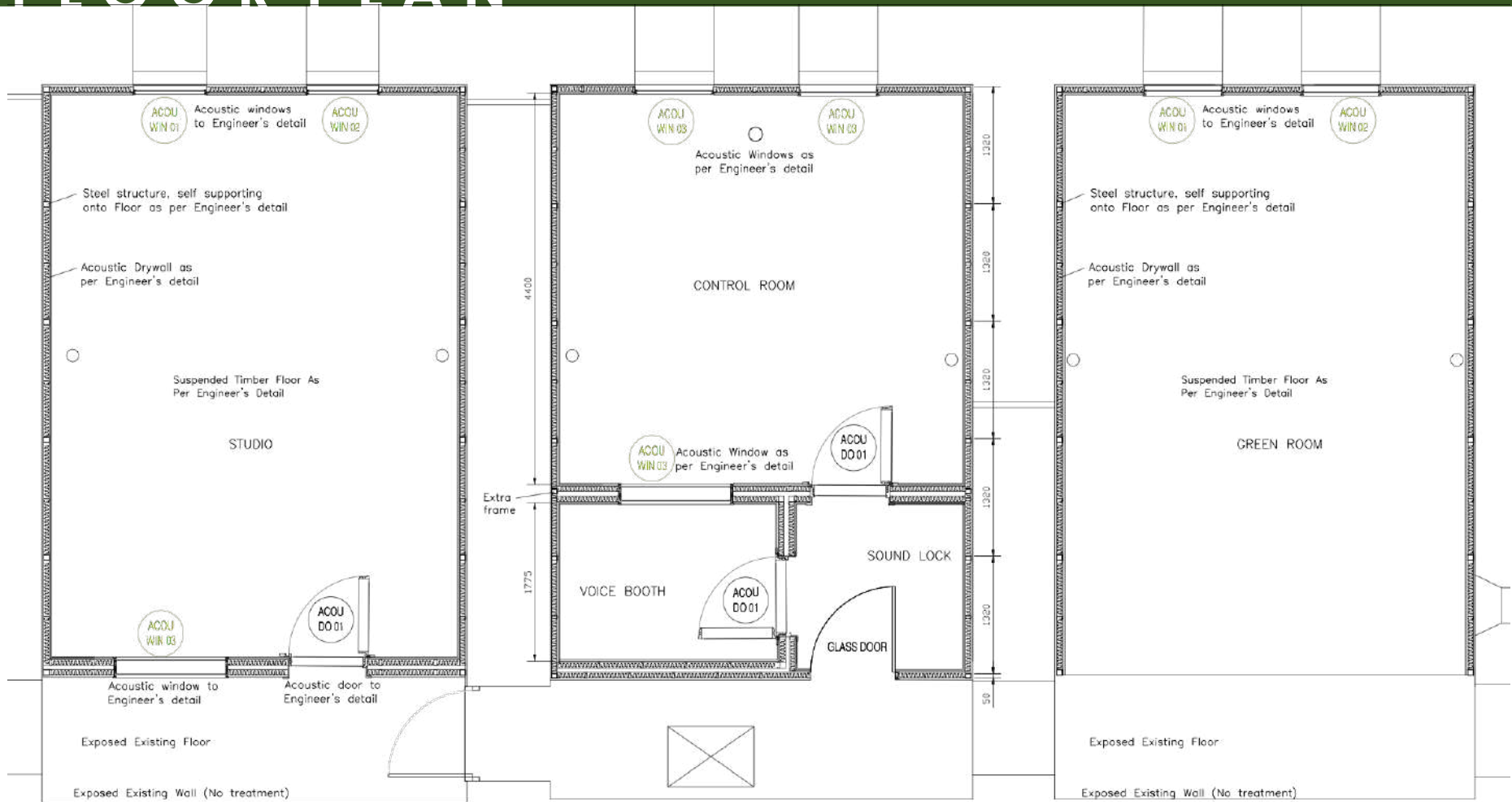


ENTRANCE





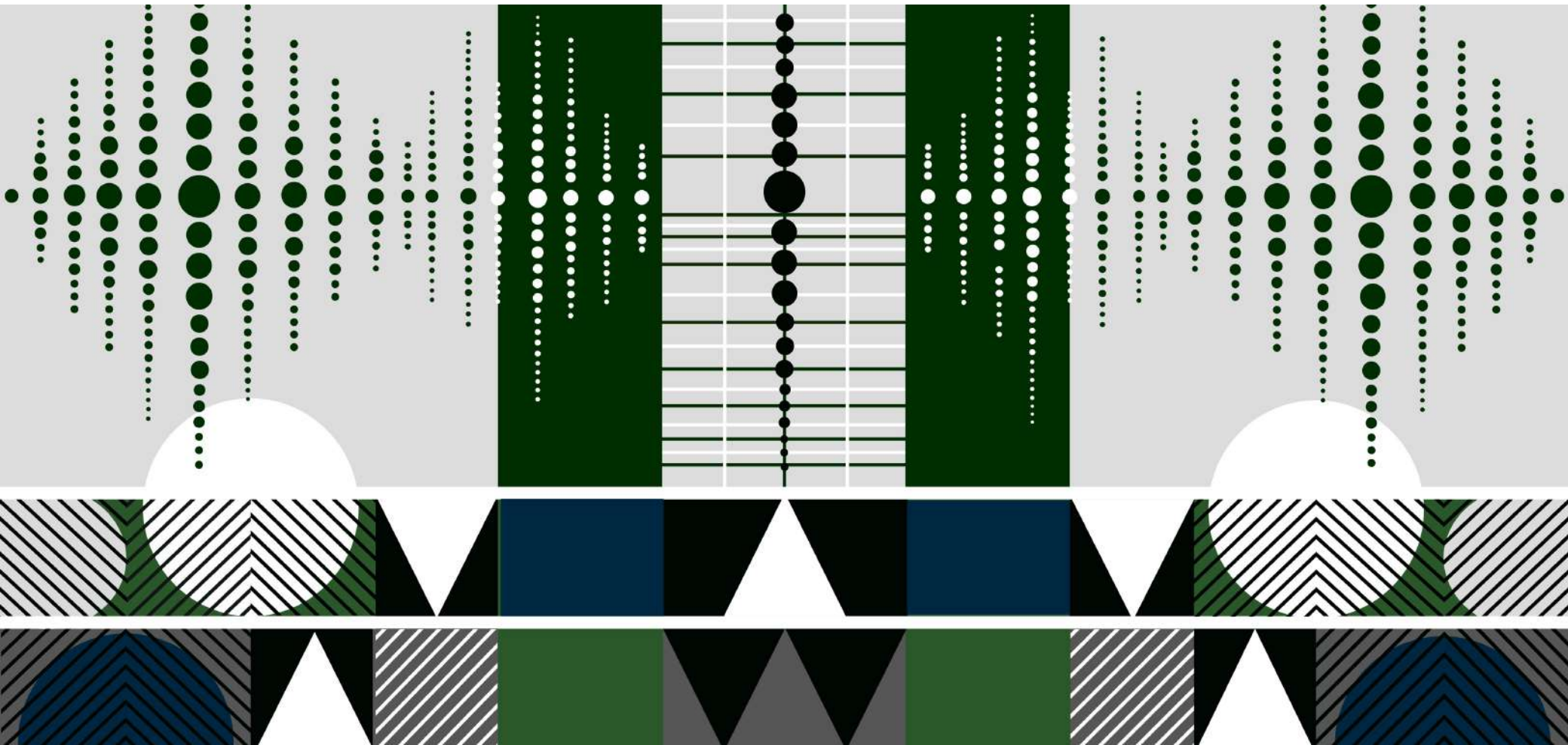
FLOOR PLAN



FLOOR PLAN



GREEN ROOM



GREEN ROOM



GREEN ROOM



GUIDELINE
Custom Sofa



DOKTER & MISSES
Paradise Coffee Table



DOKTER & MISSES
Lowveld 1 Seater

GREEN ROOM



INDIGI
Ottoman



CASAMENTO
Lucy Chair



WIID & CERAMIC MATTERS
Segmented Ceramic Side Table

GREEN ROOM



DOKTER & MISSES
Moonjelly Standing Lamp



PEDERSEN AND LENNARD
Steel Clad Server



THE URBANATIVE
Mangbetu Oval Pot and Stand

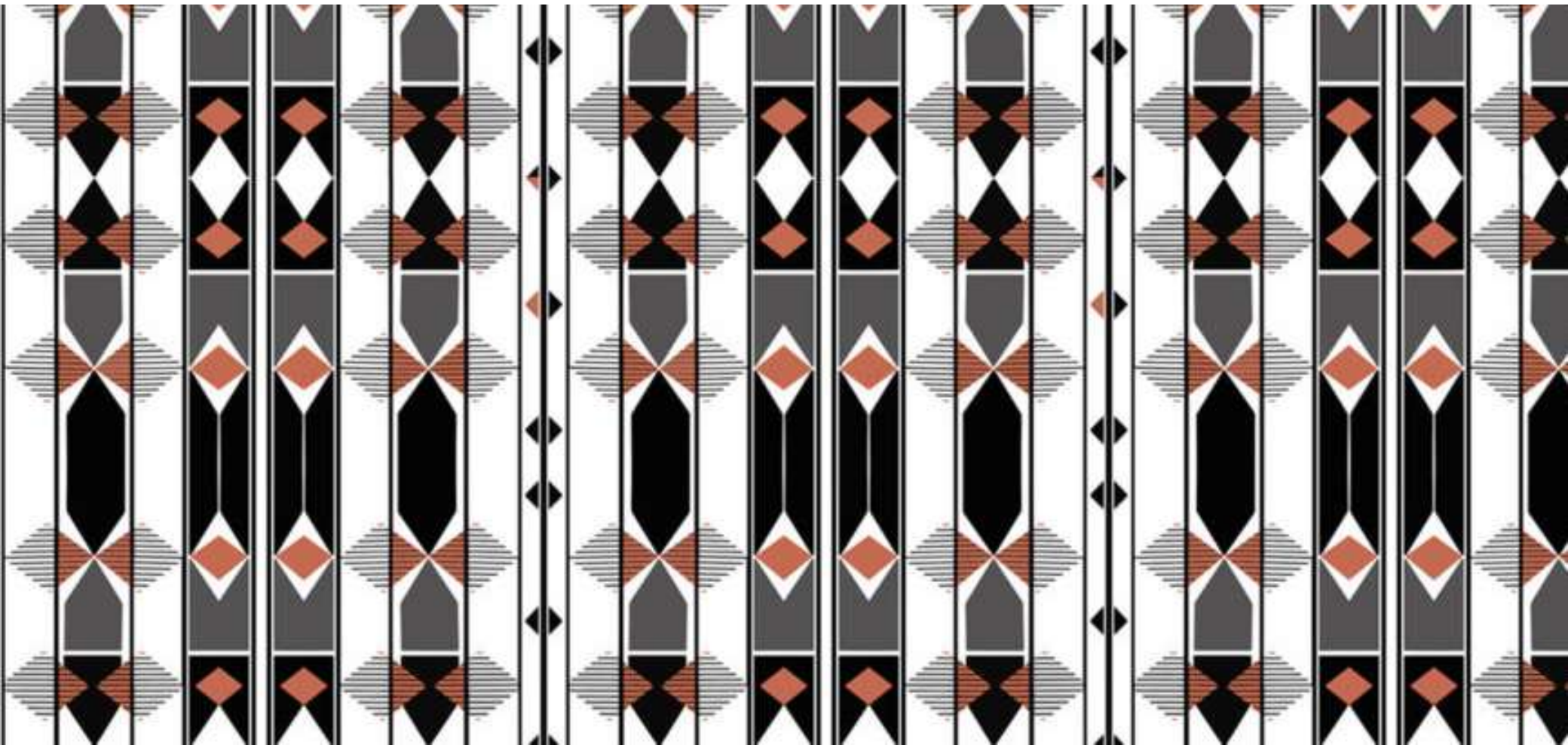








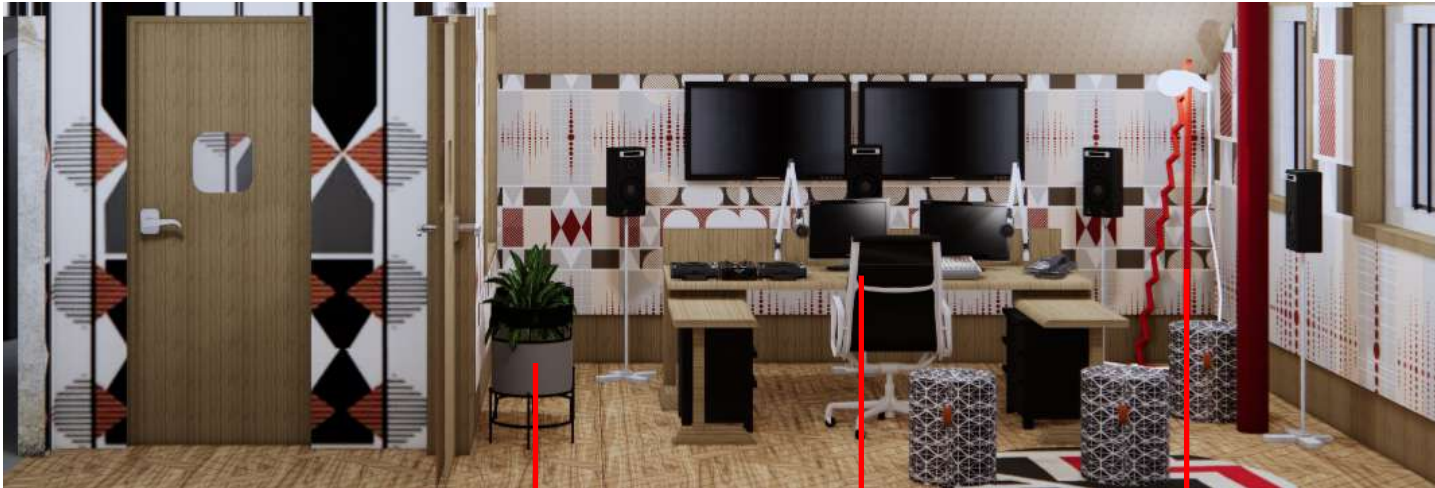
CONTROL ROOM



CONTROL ROOM



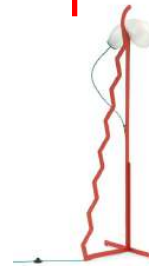
CONTROL ROOM



THE URBANATIVE
Mangbetu Oval Pot and Stand



CHAIR CRAZY
Replica Eames Office Chair



DOKTER & MISSES
Moonjelly Standing Lamp

CONTROL ROOM



INDIGI
Ottoman



GUIDELINE
Custom Sofa

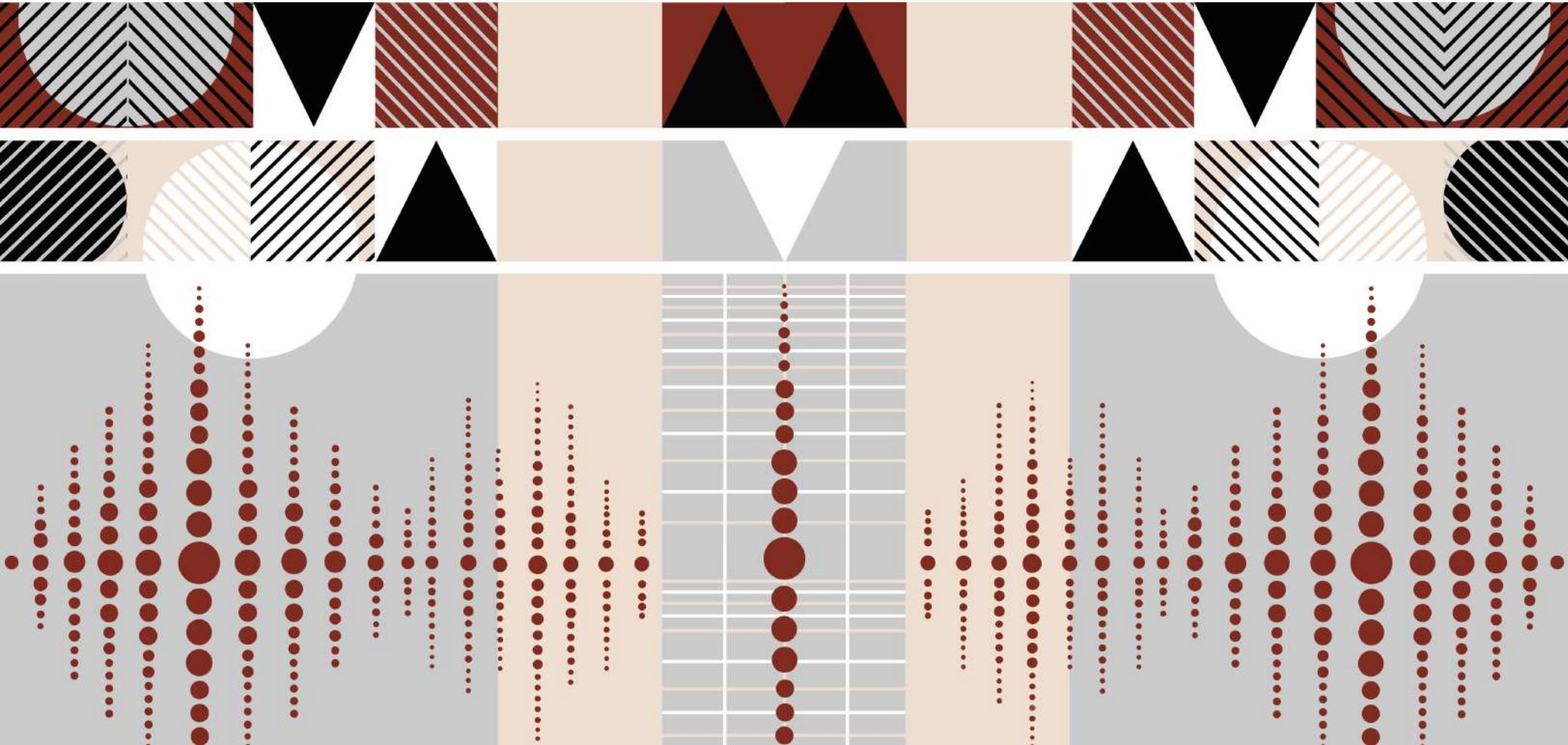








STUDIO



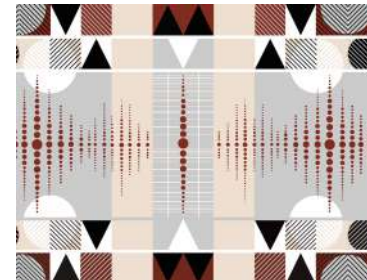
STUDIO



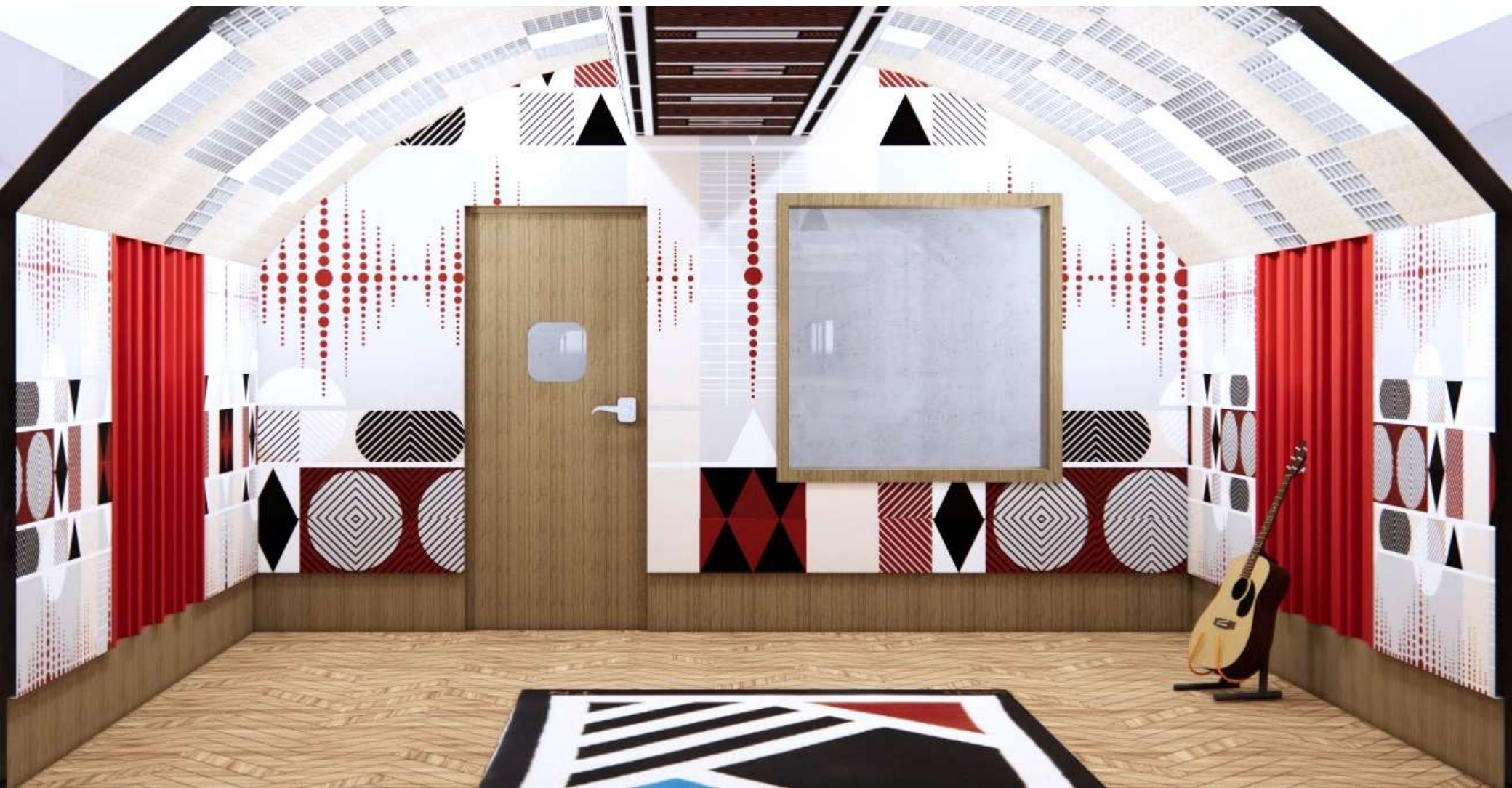
STUDIO



THE NINEVITES
Carpet



GLORINAH KHUTSO MABASO
Pattern

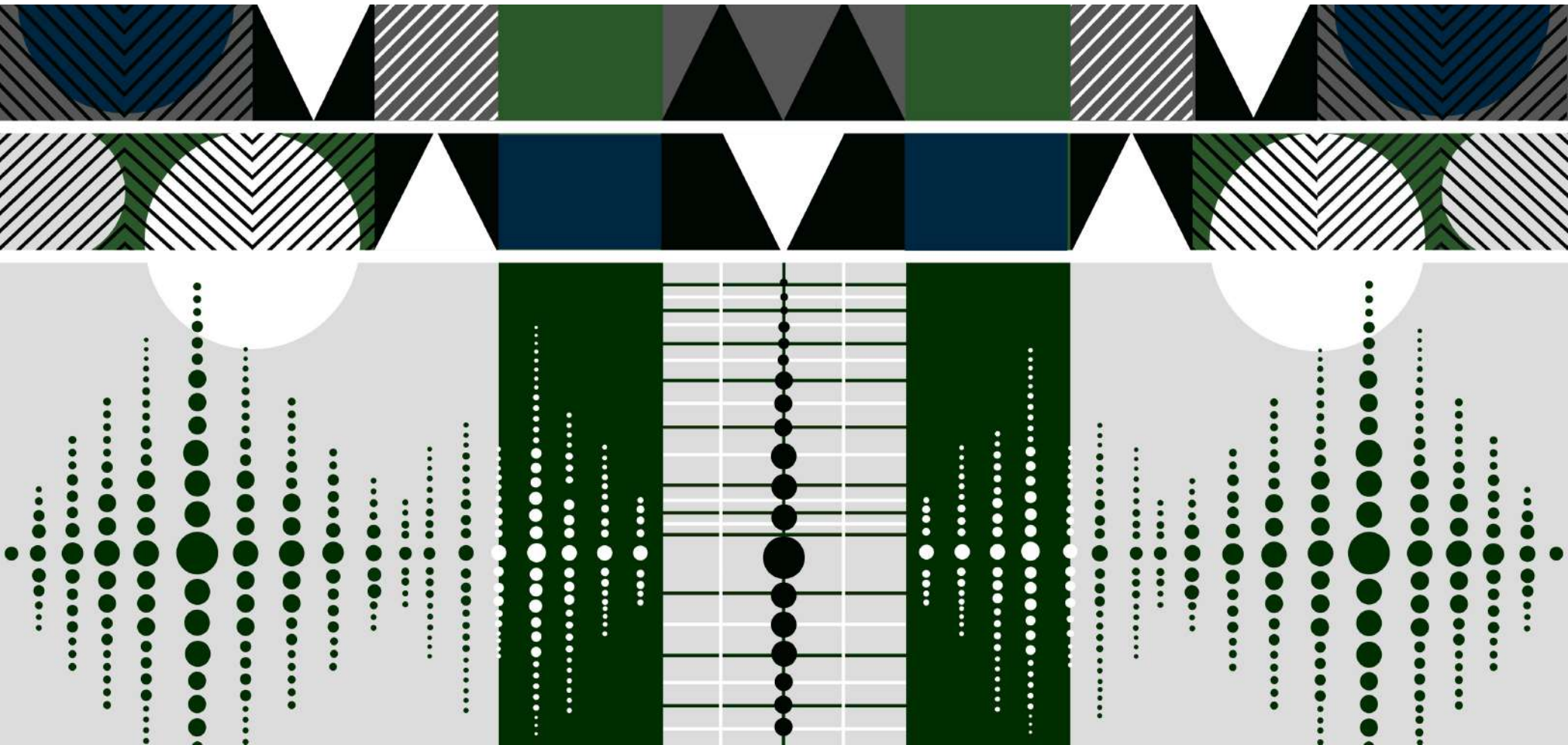








REHEARSAL ROOM



REHEARSAL ROOM



REHEARSAL ROOM



CASAMENTO
Lucy Chair



DOKTER & MISSES
Paradise Coffee Table



GUIDELINE
Custom Sofa

REHEARSAL ROOM



PEDERSEN AND LENNARD
Custom Server



NATURALIS
Myabi Chair









